

# The Madisonian

THE LOCAL NEWS OF THE MADISON VALLEY, RUBY VALLEY AND SURROUNDING AREAS

Montana's Oldest Publishing Weekly Newspaper. Established 1873

75¢ | Volume 145, Issue 10

www.madisoniannews.com

Thursday, December 29, 2016

## From the Alder School to the White House

Students create ornaments for the National Christmas Tree display in Washington, D.C.

CAITLIN AVEY  
news@madisoniannews.com

The two-room Alder schoolhouse, along with all 23 students, was part of history in 2016 as they were asked to create 12 ornaments for the National Christmas Tree display located in President's Park in Washington, D.C., according to a release from Sheri Jarvis with the Montana Arts Council.



PHOTO COURTESY SHERI JARVIS  
Montana's tree at the display in Washington, D.C.

The Montana Arts Council was asked to select a Montana artist, arts group or school group by the National Park Service to be part of the tree display celebrating Christmas across the nation at the National Christmas Tree Lighting, an event presented by the National Park Foundation and National Park Service.

"The centerpiece of this celebration is the National Christmas Tree, which is accompanied during the holiday season

by 56 smaller Christmas trees, each one representing a U.S. state or territory," said Jarvis in the release. "There is no particular theme for the artists to follow, other than highlighting what Christmas means to them."

The Alder students were joined by artist Carolyn Baker, whose ornaments focused on the joy of the season in rural Montana, and their appreciation for attending a small school.

"Each student contributed a piece of artwork illustrating their favorite part of Montana life to the 12 ornaments that house an image painted on by (Baker)," said Jarvis.

## 5th Judicial District

Judicial Nomination Commission submits 3 names to Governor

ABIGAIL DENNIS  
editor@madisoniannews.com

The Honorable Judge Loren Tucker steps down from his office on Jan. 27, 2017, and a new face will take over as the judge of the Fifth Judicial District serving Madison, Beaverhead and Jefferson counties.

On Dec. 19, the Judicial Nomination Commission narrowed down a field of 12 applicants to three — those names were submitted to Gov. Steve Bullock for consideration and appointment.

According to a press release from the commission, Luke Michael Berger, Jed Clayton Fitch and Lori Ann Harshbarger are still in the running to replace Judge Tucker.

"Before recommending the nominees to the Governor, commission members interviewed the

Turn to JUDGE on p. A8

## Winter weather

Multiple snow systems keep Madison County near normal for December



CAITLIN AVEY/THE MADISONIAN  
The area around Reynolds Pass could see anywhere between 4-8 inches of new snow with the predicted storm system.

CAITLIN AVEY  
news@madisoniannews.com

Madison County had a white Christmas this year, as multiple winter weather systems moved throughout the valleys, bringing 2-5 inches of snow on the valley floor, according to meteorologist Roger Martin with the National Weather Service in Great Falls.

"Most areas in the lower elevations saw anywhere from about 2-5 inches of snow, while the higher terrain saw closer to the

6-12 inch range," Martin said, adding Madison County is within the norm for the month of December despite a "sporadic" climate.

Martin said there is an additional observer site in Ennis that logged just under 9 inches of snow for the month, which is pretty representative of most of the county.

"Nothing so far has hit anything well above or below average, but the month isn't over yet and that could change as more snow is possible," he said.

While the last winter system added

close to 3 inches of white to our landscape, Martin said another system is on its way, and higher elevations and mountain passes could see the most impact.

"Places like Reynolds Pass and those high elevations could see 4 to 8 inches of snowfall in this next system," he said.

Aside from some light snowfall, Martin also noted a "fairly breezy" week for the county, as winds will pick up with the next system toward the end of the week with blowing snow and reduced visibility throughout the county.

## LAND EXCHANGE

State Land Board unanimously approves exchange near Twin Bridges

CAITLIN AVEY  
news@madisoniannews.com

During the State Land Board's Dec. 19 meeting, board members unanimously approved a land swap between the Department of Natural Resources and Conservation and SRI River Holdings.

The exchange comes from a 2015 proposal from SRI River Holdings, a Twin Bridges-area land owner, requesting a trade of 861 private acres of their land in the Rochester Basin and along the Big Hole River for 611 acres of state land along the Jefferson River northwest of Twin Bridges.

The exchange will result in 245 acres gained, or a 28 percent increase to public land access and \$474,000 to the benefit of the state, according to DNRC Director John Tubbs.

Though the Land Board, comprised of Governor Steve Bullock, Attorney General Tim Fox, Commissioner of Securities and Insurance Monica Lindeen, Secretary of State Linda McCulloch and Superintendent of Public Instruction Denise Juneau, made the final decision, public comment was received throughout the proposal process.

### From the public

Thomas Elpel with Jefferson River Canoe Trail Chapter of the Lewis and Clark Trail Heritage Foundation has been very vocal throughout the entire process, expressing concerns about the state losing the 80-acre parcel of land on the Jefferson River, known as Beaver Chew, which holds significant historic importance because of its connection to Lewis and Clark.

Elpel was present at the meeting and gave a final plea opposing the exchange until a deal all could support could be negotiated.

"The obvious solution is to evaluate the trades separately and renegotiate a deal the public can truly support," Elpel said during his public comment.

Elpel also stated he had proposed a recreation easement at the confluence that would move the public off the west side of the river and would not cost SRI River Holdings anything, while still having land and grazing rights.

"I pitched (the recreation easement) to



MAP COURTESY DEPARTMENT OF NATURAL RESOURCES AND CONSERVATION  
The land exchange between a Twin Bridges-area landowner and the state, which was approved by the Land Board on Dec. 19, is depicted on the map.

SRI and they said no," Elpel said, adding that on paper, SRI River Holdings has "appeared to be very generous" while his group has come across as "unreasonable" or "not accepting."

"In reality, we would have jumped on any offer of a functional campsite with func-

tional being defined as a campsite the public could use," he said.

### In favor of the swap

Madison County Commissioner Ron Nye

Turn to EXCHANGE on p. A8

**RUBY VALLEY BANK**  
www.rubyvalleybank.com

P.O. Box 417 • Twin Bridges, MT 59754  
(406) 684-5678

P.O. Box 587 • Sheridan, MT 59749  
(406) 842-5411



Member FDIC

With the Visa Prepaid Card, you'll have a safe and convenient payment method and enjoy the comfort of knowing you are taking a responsible approach to your spending.



The Visa Prepaid Card offers many benefits to support your everyday needs.

• FREE Direct Deposit • Cash access at ATMs worldwide • Text Alerts • Bill Pay • Online cardholder website

### TABLE OF CONTENTS

Local News.....	A1-3, 5	Columns.....	B3
Sports.....	A2	Comics/Games.....	B4
Obits.....	A4	Classifieds.....	B5
Lifestyle.....	B1	Public Notices.....	B6
Health & Wellness.....	B2	Calendar.....	B10

Visit us online at  
www.madisoniannews.com



**Conforming Mortgage Fixed Rates**

30 Years - .000% Points  
**4.125% Rate 4.240% APR**

15 Years - .000% Points  
**3.375% Rate 3.574% APR**

Rates subject to change without notice. APR calculation is based on a \$100,000 loan amount with a \$500 loan origination fee, \$200 processing fee, \$200 document processing fee, Mers fee \$200, \$200 flood determination fee, \$200 transcript fee, 30 days of prepaid interest and \*discount point fee as stated above.

**If you haven't enrolled for E-Statement delivery, the time is now.**

Your statements will be made available to you at the touch of a button ... no more waiting for the mail and, most importantly, it's paperless!  
 Thank you for banking with [www.bankingonthefuture.com](http://www.bankingonthefuture.com)

**AUTO LOANS**  
 AS LOW AS  
**4.5% rate**  
**4.879% APR**

Rates subject to change without notice. APR calculation based on \$50,000 loan amount with a \$500 loan fee, 30 monthly payments @ 30000 on approved credit.

**FIRST MADISON VALLEY BANK**  
 Member FDIC

Office: 200 E. Main St • Ennis, MT 59729 • Toll Free: 800-233-2333

[WWW.BANKINGONTHEFUTURE.COM](http://WWW.BANKINGONTHEFUTURE.COM)

**B&E** CONVENTIONAL FRAME HOMES  
 COMMERCIAL  
 REMODELS & ADDITIONS  
 HAND-CRAFTED LOG HOMES

*All phases of construction, design and consulting*

**CUSTOM BUILDING DESIGN**



e-mail: [bande@3rivers.net](mailto:bande@3rivers.net) | [www.bandeconstruction.com](http://www.bandeconstruction.com)  
 brad bullock 581-4117 | ken evans 490-2758 | office 682-7942  
 p.o. box 1444 Ennis, MT 59729

**Yellowstone Horseshoeing**

**Rusty Wiseman - Farrier**  
 406.581.4600  
[mtmountainhigh1@yahoo.com](mailto:mtmountainhigh1@yahoo.com)

Gentle Horsehandling  
 Reliable - Prompt Service  
 Honesty - Integrity  
 Knowledgeable

**MOUNTAIN VIEW TV & SATELLITE** **dish** **DIRECTV**

**ELECTRONIC SUPPLY**

(406) 682-7858  
 (406) 596-1513  
[mtvw@3rivers.net](mailto:mtvw@3rivers.net)

Jim Forsberg  
 Mountain View TV & Satellite, Inc.  
 6 Sunrise Loop Ste B  
 Ennis, MT 59729

**Lisa Brubaker, LCSW, LLC**  
 Licensed Clinical Social Worker

*It's never too late to find balance.*

PO Box 602  
 Ennis, Montana 59729  
[sw.privatepractice@gmail.com](mailto:sw.privatepractice@gmail.com)  
 (406) 670-4546

Insurance Accepted.

- Individual & Couples Counseling
- Specializing in Adults & Adolescents

**MY DRYWALL IS WITH YOU TILL THE END OF THE LINE.**



**HARDY DRYWALL**

**FULL SERVICE DRYWALL, PLASTER & STUCCO**  
**406-596-3137**

# A look back at Madison County happenings in 2016



**ELECTION RESULTS**  
 After months of campaigning and county forums, voters made their voices heard as they elected Jeff Welborn to Senate District 36 and Ray Shaw to House District 71 after the June 7 primary election. The contested race for commission district one dwindled from three candidates to two, as Madison County voted for Dan Allhands and Dave Schulz to run in the general election.  
 After a record voter turnout for Madison County – 79 percent – Allhands was elected as the new commissioner for district one during the general election on Nov. 8.

ABIGAIL DENNIS/THE MADISONIAN



**WEST YELLOWSTONE STAR**  
 After the dissolution of the *West Yellowstone News* in August, Erin Leonard and Susanne Hill, owners and publishers of *The Madisonian*, announced the creation of a new paper for the community, the *West Yellowstone Star*, with their first edition printed at the end of September. The *Star* has three months of publications under its belt, and will see new leadership in the new year – be sure to stay in touch for more information.

BOYD G. PHOTOGRAPHY



**FAIRGROUNDS GROWING PAINS**  
 The Madison County Fairgrounds remains in high demand and an “incredible problem,” according to commissioners and fair board members. From infrastructure and capacity issues to a growing 4H program, county commissioners and board members hope to determine a solution in the coming year.

ABIGAIL DENNIS/THE MADISONIAN

**BIG SKY TEDD**  
 In March, Madison and Gallatin county commissioners received a presentation about a potential Targeted Economic Development District for the Big Sky area. When a TEDD is established, a baseline is set on all property taxes within the district. Then, any new development or increased property tax revenue is considered an increment and those funds are set aside for infrastructure needs within the district.  
 No development has been made about whether or not to move forward with the TEDD, and the commissioners are still trying to decide what is the best move for Madison County.

ABIGAIL DENNIS/THE MADISONIAN



# Year in review: NEWS

CAITLIN AVEY  
news@madisoniannews.com

Another year has come and gone, which means it is time to take a look back. From small town government and an election year, to the future of the Madison County Fairgrounds and a human encounter with a grizzly bear, 2016 was full of news, big and small. Here are a few highlights:

## BLUE LAKE FIRE

On July 21 around 2:45 p.m., a grass fire west of Shining Mountain Loop Road near Axolotl Lake was reported. Thanks to nearly 35 mile per hour winds and high temperatures, the fire burned over 750 acres in total. The lightning-caused fire saw 160 fire personnel as crews worked day and night to contain the blaze.

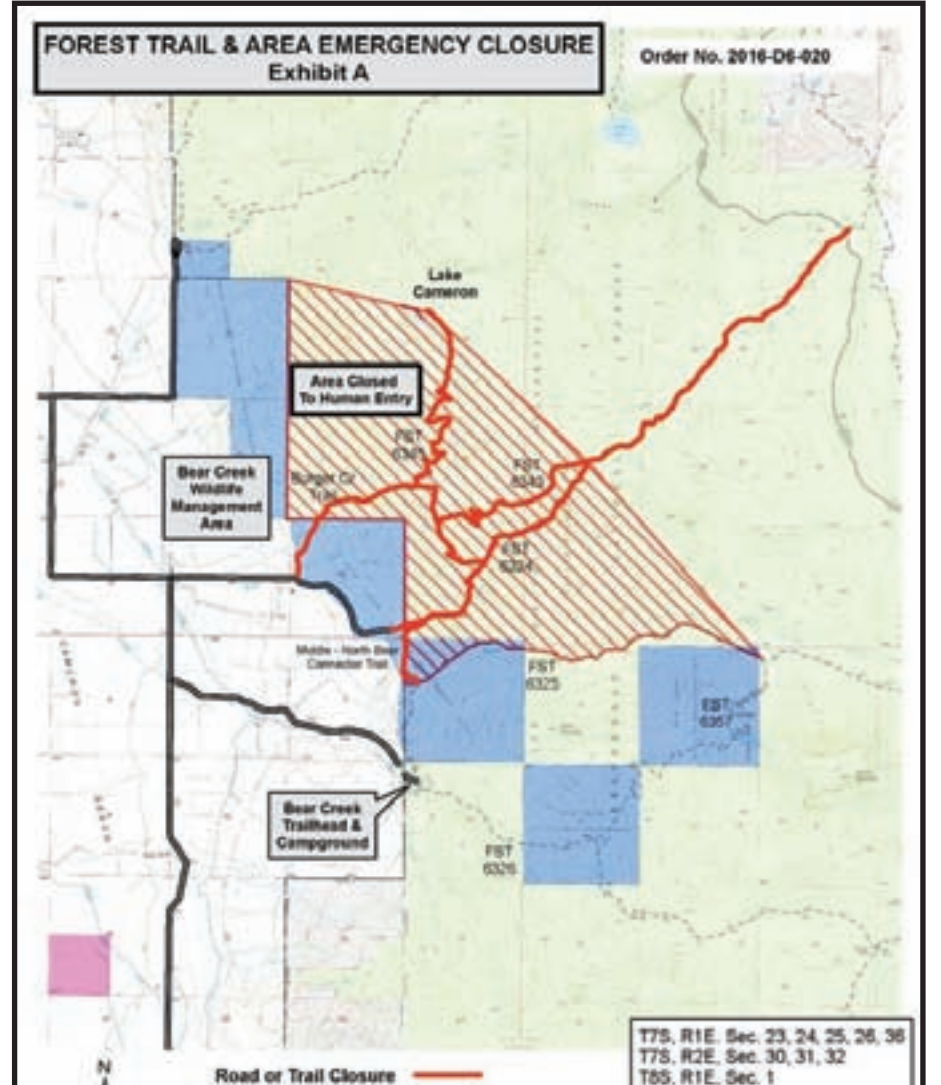
PHOTO COURTESY UNITED STATES FOREST SERVICE



## SEYLER LANE

On June 27, 2016, after a highly publicized, 10 year long lawsuit regarding public access to the Ruby River, the Honorable Judge Loren Tucker filed an order with Madison County District Court determining the easement widths for Seyler Lane where it crosses the Ruby River south of Twin Bridges.

ABIGAIL DENNIS/THE MADISONIAN



## GRIZZLY ATTACK

On Oct. 1, the Beaverhead-Deerlodge National Forest temporarily closed trails in the Lee Metcalf Wilderness after a human-grizzly encounter up North Fork Bear Creek. A 50-year-old Bozeman man was scouting hunting spots when he encountered a sow grizzly and two cubs. The bear charged the man and he deployed his bear spray, an act which, unfortunately, did not halt the bear. The bear mauled, bit and stomped on the man before wandering away, only to attack him a second time. After surviving the second attack, the man hiked out and drove himself to the Madison Valley Medical Center.

MAP COURTESY UNITED STATES FOREST SERVICE



## LEAD IN THE WATER

After a routine water system sampling, the Department of Environmental Quality found elevated levels of lead in some of Sheridan's drinking water. "We found lead in three sections of the town, mostly on the eastern side of town and not throughout the entire (water) system," Mayor Tom Shaffer said. "We're not in any violations with DEQ but it has reached a point where we need to take action." The town provided home lead sampling kits and bottled water to residents and is currently in the process of following two mandatory six month cycles of water testing to determine whether or not lead levels have decreased.

ABIGAIL DENNIS/THE MADISONIAN

## SHERIDAN TEEN FOUND SAFE

On Aug. 4, Casper, Wyo., police recovered 16-year-old Sandy Moore from Sheridan who had been missing since the early morning of Aug. 3. The Department of Justice issued an Amber Alert for Moore on Aug. 3. Moore's family last saw her the night of Aug. 2 before bed, according to Madison County Sheriff Roger Thompson. Rodney Lee Zahn, 60, was arrested in Casper when Moore was discovered with him. Zahn is still in custody pending a court date.

PHOTO COURTESY DOJ



## SIDEWALKS IN ENNIS

A Montana Department of Transportation project to install sidewalks in Ennis saw division within the town. The proposal included four segments; segment one from Shedhorn Sports to Chowning Street; segment two from First Street to the south entrance of the Madison Valley Medical Center; segment three from Pearl Street to Fan Mountain Inn along the west side of the 'Y' intersection; and segment four from Fan Mountain Inn to Madison Foods. After much discussion and comments from the public, Ennis Town Commissioners voted in favor of segments one, two and four, but voted down segment three in February. The council later voted to rescind the February vote and move forward with the original MDT project as proposed.

ABIGAIL DENNIS/THE MADISONIAN

## Get Results.

People are reading.  
Advertise your business or event today!

madisoniannews.com

## The Madisonian.

Established in 1873

(USPS 325-340)

Montana's Oldest Operating Weekly Newspaper

### Owners/Publishers:

Susanne Hill & Erin Leonard

**Managing Editor:** Abigail Dennis

**Accounts Payable/Receivable:**  
Susanne Hill

**Art Director:** Erin Leonard

**Circulation Manager/Reporter:** Caitlin Avey

**Sales Manager/Circulation:** Rachel Anderson

### Contributors:

Keith Axberg, Les Gilman, Art Kehler, Stacy Gatewood, Kelley Knack, Nancy Nesbit, Christopher Mumme, Matt Hill, Jeremy Weber, Keri Montgomery, Charlie Rossiter

### ENNIS, MONTANA

#### - Madisonian Editorial Policy -

Editorials are intended to acquaint our readers with the Editor's viewpoints on matters of public importance. Guest editorials and letters from readers (Letters to the Editor) reflect the opinion of the writers and do not necessarily reflect the opinion of the Editor or the staff of *The Madisonian*.

#### - Press Release Policy -

•The *Madisonian* staff will give all press releases full consideration, but ultimately retains the authority to determine whether or not to publish releases.

•Content must be factual and objective.

•Content must not contain advertising language (such as "Thank you," "Congratulations," "call now," "to buy tickets for," "now showing,") or include pricing.

•Items of a general business interest are appropriate for advertising—see advertising policy and current rates.

•Content must not be derogatory to competing companies or organizations.

•Content may only be submitted and published once.

•There are no guarantees that press releases will be published.

•The *Madisonian* may edit submissions for grammar and content.

•The *Madisonian* reserves the right to make all determinations relative to the above policy.

#### - Letters to the Editor/Readers Speak Policy -

The *Madisonian* encourages the opinions of readers on public issues and matters of local concern. Letters must be close to 350 words. Please include the writer's name, address and phone number. The *Madisonian* reserves the right to edit content for grammar, good taste and libel. We also reserve the right to reject or delay publications.

Announcements, thank yous and letters of a commercial nature will not appear in this column.

#### - Display & Classified Advertising Policy -

The *Madisonian* accepts most advertising, but may turn away any advertisement for any reason. It is up to us to decide on placement and content acceptability.

The advertisements in this publication are not necessarily the opinion of or supported by *The Madisonian*.

Please note: Our client information is confidential.

#### ~ Subscription Rates ~

In-State - \$35.00/1 year or \$60.00/2 years • Out-of-State - \$45.00/1 year or 75.00/2 years (e-Edition complimentary with print subscription) • \$30 - e-Edition only • \$40 - 6 mos. print/1 year e-Edition

**Postmaster: Please, Send Address Changes to:**

The Madisonian, P.O. Box 365, Ennis, MT 59729

**Phone 406-682-7755**

Toll Free 1-888-238-7849

email: editor@madisoniannews.com

#### HOURS OF OPERATION:

Monday - Friday ~ 9 am - 5 pm - Call ahead as we're short staffed and want to make sure we are available to you!

Any submissions to our paper, including photos or content, may be used in any of our print and digital products.

**NEWS & ADVERTISING DEADLINE**

5 p.m. - Friday

# OPINION

## It is heartwarming to live with caring people

Dear Editor,

I want to express my sincere thank you to the many friends of Jud and myself that have given hugs, provided food, sent cards and made contribu-

tions in Jud's memory. It is so very heartwarming to live in a place with such caring people.

Merry Christmas and  
Happy New Year,  
Lynn Foreman

# OBITUARIES

Richard G. Green  
January 6, 1945 - December 18, 2016



Richard G. Green, age 71, of Harrison passed away Dec. 18, 2016, at his home.

Richard was born Jan. 6, 1945, at Bozeman to Oran

and Lydia (Bennett) Green. He was raised in Bozeman and graduated from Bozeman High School. He served in the United States Army from 1964 to 1968. From 1968 to 1971 he worked at Pacific Steel in Butte. From 1971 to 1975 he worked in Harrison at Green's Texaco. From 1975 to his retirement in 2006 he worked for McLeod Mercantile in Norris. He also drove school bus on the side while living in Harrison.

Richard enjoyed the outdoors spending his time snowmobiling, fishing, hunting, four-wheeling with his

dogs, shooting and drinking his Olympia beer. He also spent time watching NASCAR and football.

He was preceded in death by his parents Oran Green and Lydia Christensen, his sister Mary Hippert, his brother Bill Christensen, his nephews Todd and Cody, and his first wife Janet Green.

Survivors include his children: Chris Green of Salt Lake City, Utah, Deanna and Bill Todd of Snohomish, Wash., and Jerry Green and Janice Cherpeski of Billings; two grandchildren Cj and Caysi; brothers: Ron and Tobe

Green of Bozeman, Russ and Sandi Green of Pony, and Jay and Joann Christensen of Belgrade; Jack and Lynette Green and other nieces and nephews; his puppy Chico; and his best friend Susan Paige of Harrison.

Memorials may be made to Bozeman Deaconess Hospice.

A memorial service will be held Saturday, Dec. 31, at 11 a.m. from the K&L Mortuary Chapel at Harrison with Rev. Charlie Christensen officiating. A reception will follow at the Hollowtop Senior Center at Pony.

# MONTANA NIGHT SKIES

By Richard Stouffer\*

The highlight of the Montana night sky in January is the Quadrantid meteor shower, one of the top three meteor showers of the year. The Quadrantid meteor shower reaches its peak in the early morning hours of Jan. 3. The moon sets more than two hours before midnight on Jan. 2, so viewing conditions will be ideal. The Quadrantids have a very sharp peak, which means that typically far less meteors are visible close to but not at the peak. To the benefit of sky watchers in Montana, the peak for this year is predicted to occur over the western United States. At its peak, this shower has the potential for an observer to see from 40 up

to 120 meteors per hour. The radiant, or the point in the sky from which the meteors appear to come from, is just beyond the handle of the Big Dipper, although you may see meteors from this shower at any point in the sky. So if you don't mind braving the cold for a short while, between midnight and when dawn begins to brighten the sky, go outside to the darkest place that you can find, look straight up in the sky facing north and enjoy a winter sight that few have ever seen!

Planetary highlights center around brilliant Venus, which is putting on its finest evening display in five years. Venus is also rapidly approaching Mars as

the distance between these two planets shrinks from 12 degrees to less than 6 degrees over the course of the month. Venus sets about four hours after the sun all month long, while Mars sets about five hours after the sun at the beginning of the month and about four and one-half hours after the sun as the month ends. Next up in the night sky is the giant planet Jupiter, which rises about two hours after Mars sets. Near Jupiter is Spica, the brightest star in the constellation Virgo. Jupiter rises about 1:30 a.m. as the month begins and about 11:30 p.m. by the end of the month. Joining Jupiter in the morning sky is the ringed planet Saturn, which rises about 6:40 a.m. as the month begins and about 4:50 a.m. as January comes to a close. By the end of the first week in January, Jupiter and Saturn are joined by the innermost planet, Mercury. Mercury reaches its greatest distance from the sun on Jan. 19, when it rises about one and one-half hours before sunrise.

The moon is located below Venus on Jan. 1 and passes between Venus and Mars the next evening. A few hours later, just after midnight on Jan. 3, the moon passes very close to Mars. The moon passes to the upper right of Aldebaran, the brightest star in the constellation Taurus, on Jan. 9. The moon is full on Jan. 12. The moon forms a tight triangle with Jupiter and Spica on Jan. 19. The moon passes above Saturn on Jan. 24 and above Mercury the next morning. On Jan. 31, the moon forms another tight triangle, this time with Venus and Mars.

The sun rises at its latest time for the year on Jan. 1 except for the last few days leading up to the changeover from Daylight time to Standard time, which occurs on Nov. 5 this year.

\* Stouffer is a lifelong amateur astronomer and former member of Delaware Astronomical Society and National Capital Astronomers.

## WE OFFER COMPLIMENTARY OBITUARIES

Guidelines: Must be 450 words or less and one photo.  
(Otherwise, it will be 25 cents per word thereafter)

Please call or email:  
682-7755 or editor@madisoniannews.com

The Madisonian does not endorse the viewpoints or statements of those who submit letters to the editor.  
Please do your own research and check your facts.

# Year in review: SPORTS

CAITLIN AVEY  
news@madisoniannews.com

Madison County athletes excelled this year, as teams brought home shiny hardware and personal records. Two Madison County coaches also received accolades and were named coach of the year! Read on for highlights!



### ENNIS VOLLEYBALL AT STATE

After sweeping the district and divisional tournaments and earning a trip to the class C state tournament, the Lady Mustangs fought their way to the title game. After getting knocked out by the team that would later defeat them in the championship, the Lady Mustangs fought hard to take the Belt Huskies to a five match game, ultimately bringing home second place.

CAITLIN AVEY/THE MADISONIAN

**MUSTANG FOOTBALL HAS PERFECT SEASON**  
After crushing opponents throughout the regular season, the Mustang football team rightfully earned a trip to the class C 8-man championship. Trekking across the state to take on undefeated Charlo, the Mustangs managed to pull out the win after going into a sudden death overtime against the Vikings.

ABIGAIL DENNIS/THE MADISONIAN



### DISTRICT AND DIVISIONAL BASKETBALL

The Ennis boys' basketball team took home the district title after defeating Manhattan Christian, sending them to the divisional tournament, along with the Lady Mustangs and the Lady Falcons. Despite hard fought games throughout the regular season and in tournament play, teams from Harrison/Willow Creek, Sheridan and the Twin Bridges boys' team did not advance. At the divisional tournament, both the Lady Falcons and the Ennis Mustangs took home fourth place finishes, while the Lady Mustangs lost out in the consolation bracket.

ABIGAIL DENNIS/THE MADISONIAN



### TRACK CHAMPS

The Mustangs track and field team was victorious for a second year in a row as the boys took home the class C state title with 83 points. To help achieve the title, both the 4x100 relay and the 4x400 relay took first place and posted new state records.

PHOTO COURTESY WENDY MCKITRICK

### STATE CROSS COUNTRY

Runners from Ennis, Harrison, Sheridan and Twin Bridges headed to Kalispell on Oct. 22 for the state cross country meet. All teams had strong showings, with many top finishes and team placings. Harrison's Derik DeFrance placed fifth, beating his 2015 state time by 16 seconds, while Sheridan's Riain Deavel placed third, helping the team to take sixth place overall. For the girls, Twin Bridges had a fourth place finish, led by Savanna Stewart who finished in eighth place. Maida Knapton was the sole girl runner for the Mustangs and placed 21st.

PHOTO COURTESY JEREMY WEBER



### COACHES OF THE YEAR

Mustang track head coach Wendy McKitrick was selected as the class C boys track and field coach of the year and Mustang football coach Chris Hess also received the honor for class C 8-man football.

Coach of the year is selected by members of the Montana Coaches Association and, in order to be nominated for the position, the coach's team either win a state championship or place in the top four of the sport. McKitrick led the Mustang boys track and field team to a state title in May while Hess coached the Mustang football team through an undefeated season, resulting in the state 8-man title.

PHOTO COURTESY WENDY MCKITRICK  
ABIGAIL DENNIS/THE MADISONIAN



### LOTT RETIRES AFTER 30 YEARS

After more than three decades on the hardwood, Lady Falcon head basketball coach Rob Lott hung up his whistle. Lott officially retired from teaching after 34 years in the education system, and per Montana Teachers' Retirement System, someone who retires from teaching cannot have anything to do with the school district for 150 days. "I'd be lying to you if I just said no," Lott said about the potential to coach again. "But I also can't promise I'm going to pursue it. It's really time for someone new to do it, but on the other hand, if they were struggling, I would gladly help out."

CAITLIN AVEY/THE MADISONIAN

# & SPORTS:

## MADISON COUNTY BASKETBALL

### Sheridan takes on Twin Bridges, Ennis

CAITLIN AVEY  
news@madisoniannews.com

The Sheridan Panthers had back-to-back games last week as they battled two of three county rivals, the Twin Bridges Falcons and the Ennis Mustangs. Despite a hard effort, neither Panther team could pull away win before breaking for the holiday season.

#### GIRLS

The Lady Panthers were up first as they stepped on the hardwood against a tough Falcon team. The Lady Falcons are known for their press, which rattled the Panthers and forced multiple turnovers, allowing the Falcons to run away with the game. At the half, the Lady Panthers were down, 4-51.

"We need to work on being patient and not settling and not getting down on ourselves," said head coach Matthew Rockeman. "And we need to be more aggressive on the rebounds."

Janie Smart, Tia Hill and Zoe Lee each contributed two points to the Panthers final score, and Smart and Micara Devereaux exhausted all five of their personal fouls against the Falcons.

The Lady Falcons each saw playing time, and most of the roster was able to contribute to their 55 point victory. Starters Kailee Oliverson, Cassie Williams, RaeAnne Bendon, Mara Johnson and Audrey George each put significant points on the board before their younger teammates had a shot.

"Despite playing a great defensive game we did some really good things offensively," said head coach Josh Keller. "We shot 50 percent from the field and 38 percent from three. We also got to the line 37 times, which is a big goal of ours."

Though the Panthers were out two players and scoreless in the fourth quarter, the energy from the team and the crowd did not cease until the final buzzer.

"Say yes! We do! We do

believe in you!" chanted the Sheridan crowd as the girls left the court.

With no time to wallow in defeat, the team had to turn right around and take on another tough Madison County team the following night. Their advantage this time was playing on their home court and in front of a home crowd that never fails to show up. Both sides of the gym were packed, however, as dedicated Mustang fans made the snowy drive over the hill to cheer on Ennis.

The girls in green are still relishing from a successful volleyball season and some successful preseason games, and managed to keep the Lady Panthers to a nearly scoreless first half, heading into the locker room with a 26 point lead; 28-2.

The Panthers found their spunk after the half and came back with vengeance as they held the Lady Mustangs to single digit scoring in both the third and fourth quarters.

"We need to start holding our opponents down," said Rockeman regarding scoring.

The Lady Panthers were led by Smart, who finished with eight points, while fellow starters Devereaux and Tionna Schwend each added a bucket, bringing the final Panther score to 12.

Most of the starting bench for the Lady Mustangs contributed points to their 34 point victory. Jourdain Klein led the herd with 16 points, while Danyel Martin and Danika Philpott added 12 and nine points, respectively. Paige Anderson, McCall Goodman and Whitney McKittrick also added points to the Mustangs' total.

"I thought our press looked good in the first quarter," said Mustang head coach Jordan Overstreet. "We were able to get some steals and easy layups to get the game opened up a little bit."

Overstreet said the team is focusing on running the floor offensively, as well as working on blocking over the break.

The Mustangs defeated the Panthers, 46-12.



#### BOYS

For the Sheridan boys, though they fared a little better than the girls' team, much was the same as both Twin Bridges and Ennis were able to pull away with wins.

Though the Falcons were able to grab the tip off, thanks to senior Cooper Christensen's 6'5" frame, it was Sheridan who was first to score, thanks to a sly bucket from the baseline by senior Tristen Horn. Though the Panthers were quick to get on the board, the Falcons immediately answered and were able to run away with the game, leaving the court for halftime ahead 41-16.

"I was happy with the effort that my kids put into the Sheridan game," said Keller, who also coaches the Falcons boys team. "The boys shot 53 percent from the field to go along with 18 steals and we had three guys in double figures."

Christensen, along Wesley Harshbarger and Bryce Nye,

ended the night with double points and double rebounds, and most of the Falcon team was able to contribute to the team's total 73 points.

Horn led the way for Sheridan, grabbing 14 of the team's total 20 points, despite being heavily guarded by multiple Falcon defenders. Kenny Foster and Tyler Haag added the final six points for the team with two and four points, respectively.

The Falcons defeated the Panthers, 73-20.

The following night, the young Panther team took on another experienced Madison County team when they hosted Ennis.

The Panther defense proved better against the Mustangs but the experienced Mustang team was able to walk away with the win, defeating the Panthers 65-37.

Horn once again led the team in points with 15 of the Panthers' final 37. Prior to the start of the game, Horn was inducted into Sheridan's 10,000 shot club for his work on the court throughout his high school career.

The Panther players did better against the Mustangs,

rounding out the scoreboard evenly. Haag added nine points for the team while Isaac Bendon and Foster added five and four points, respectively. Zane Bowey and Moxon Lee each contributed two.

For the Mustangs it was Tracer Croy leading way, dropping 16 points for the team. Ty Morgan was close behind with 15, while Jake Knack and Gavin McKittrick added 11 and 10, respectively.

#### ROUND UP

##### HARRISON

The Wildcats were in Phillipsburg last week for some conference action before heading into the holiday break.

"Lane Buus led the Wildcats with nine rebounds and Derik DeFrance ended with eight boards as well," said head coach Nick Dyk. "Defensively, we played well in the first half and hit the glass collecting 21 boards in the half, however, we came out flat after halftime and did not do as well rebounding managing only six rebounds as a team after halftime."

No stats had been submit-

ted for the Lady Wildcats by The Madisonian's press time Tuesday.

##### TWIN BRIDGES

After a win against the Panthers, the Falcons hosted the Drummond Trojans to the dome, with both boys' and girls' teams defeating the Trojans; 65-35 (boys) and 64-42 (girls).

Wesley Harshbarger led the boys' team with 18 points for the night, while Kailee Oliverson led the girls with 20 points.

##### ABOVE

CAITLIN AVEY/THE MADISONIAN  
Tristen Horn attempts a three pointer from well behind the arc.

##### RIGHT

CAITLIN AVEY/THE MADISONIAN  
Gavin McKittrick looks for an open lane.

##### LEFT

CAITLIN AVEY/THE MADISONIAN  
Janie Smart forces a Mustang turnover resulting a fast break down the court.



CLARIFICATION: The Harrison vs. Sheridan basketball game at Sheridan has been rescheduled for Jan. 3.

# REAL ESTATE CORNER

*Dive into the area's real estate options!*

*Call 682-7755 for more information!*

If you or your business work within the real estate industry, you may be able to contribute to the Real Estate Corner column at no charge! Simply submit an informational column - roughly 300 words - to [sales@madisoniannews.com](mailto:sales@madisoniannews.com). Submissions must be accompanied by a headshot or company logo and accurate contact information. Give Rachel a call if you need some help getting started - 682-7755.



**Sheffield, Ennis**

**Offered at \$750,000 | MLS # 191798**  
 Bring your horses to this tranquil country home located just 3 miles south of Ennis on 5+ acres surrounded on 3 sides by protected ranch land. The home was completely renovated in 2009 giving it a lengthy list of modern conveniences, amenities and upgrades. The 4BR/3BA main home and the connected, but private, 2BR/1BA handicapped accessible guest apartment provide ample space for your family or friends. Year round Lower Bear Creek crosses property and water right conveys. Enjoy great outdoor living spaces & views.  
**5.24 acres | Year-round creek | Fully renovated in 2009**



**Dawn Myrvik**  
 Broker  
 406.579.1298



**Chris Murphy**  
 Sales Associate  
 406.570.1555



**Jessie Rice**  
 Sales Associate  
 406.581.1001

*Happy Holidays from PureWest Ennis!*

[www.PureWestRealEstate.com](http://www.PureWestRealEstate.com)

All information contained herein is derived from sources deemed reliable, however, is not guaranteed by PureWest, Christie's International Real Estate, Managing Broker, Agents or Sellers.

Relationships for Life

Thanks to our friends and families for a great 2016. Here's to an even better 2017. **Happy New Year!!**



**BERKSHIRE HATHAWAY**  
 HomeServices  
 Montana Properties

[BHHSMT.COM](http://BHHSMT.COM)

ENNIS: 406.682.5002 | SHERIDAN: 406.842.5650 | TWIN BRIDGES: 406.684.5686

© 2015 BHH Affiliates, LLC. An independently owned and operated franchise of BHH Affiliates, LLC. Berkshire Hathaway HomeServices and the Berkshire Hathaway HomeServices symbol are registered service marks of HomeServices of America, Inc. Equal Housing Opportunity.

**ERA Landmark**  
 ARROW REAL ESTATE  
 Offices in Bozeman, Big Sky, Livingston & Ennis

*Thank you*  
 and  
 Happy  
*New Year*  
 from our Team



**Don Bowen**  
 ABR, Broker  
 581-2991  
[don@eralandmark.com](mailto:don@eralandmark.com)



**Toni Bowen**  
 ABR, Broker  
 570-9233  
[toni@eralandmark.com](mailto:toni@eralandmark.com)



**Ron Gay**  
 Sales Associate  
 682-4290  
[rongay@eralandmark.com](mailto:rongay@eralandmark.com)



**Robyn Erlenbush**  
 CRB, Broker/Owner  
 556-5052  
[robyn@eralandmark.com](mailto:robyn@eralandmark.com)

406-682-4290  
[eralandmark.com](http://eralandmark.com)

ERA Landmark Arrow Real Estate | 219 East Main Street, Ennis, MT 59729

EXCHANGE from pg. 1

was also present at the meeting and spoke in support of the land exchange, saying the swap was "an opportunity of a lifetime, as far as land exchanges are concerned."

"Very seldom will you get an offer of this quality," Nye said. "And I think there is another dimension to this - an economic boost for our little town of Twin Bridges."

Nye continued, saying Twin Bridges is "blessed" with an abundance of rivers and recreation opportunities, which is what keeps the town thriving.

"I know (the Jefferson River Canoe Trail Chapter) has their heart set on that piece of ground north of the Beaver Chew, but I'd hope they would look at this as an opportunity," he said, before encouraging the board to move forward with the exchange.

"I think the parcels SRI offered versus the parcels they've acquired, I think it's really a great trade," Nye said. "I refer to it as a gateway to the highlands."

Nye reiterated the potential economic boost for Twin Bridges, especially during hunting season, but said he understands the canoe club's disappointment and hopes they can figure out an alternative route along the river.

Mark Sommer, a consultant for SRI River Holdings, also spoke before the Land Board, saying the exchange was "developed as a win-win solution between SRI and the DNRC to address land management issues and safety concerns in addition to providing better public land access."

Sommer also noted the exchange meets all seven of the required criteria:

- Equal or greater value

- Similar navigable lake or stream values
- Equal or greater income to the trust
- Equal or greater acreage
- Consolidation of the state trust lands
- Potential for long-term appreciation
- Improved or equal access to state or public lands

Motion passes

Before the final call to vote was made, both Gov. Bullock and Lindeen spoke before the crowd.

"I feel it is my obligation to support this land exchange, at least that's how I'm going to vote, but I am not happy that we couldn't come to agreement," Lindeen said.

Gov. Bullock thanked everyone for their work and for expressing such passion regarding the exchange, saying it is a "reminder that Montana

matters to us all."

"Each one of these members of the board has continually asked about what access this affords and I recognize this decision disappoints some, but I believe this is a win for the trust and enhances public land access," stated Bullock.

After no final board comments or discussion, the motion passed.

**Meeting minutes and audio from the Dec. 19 approval can be found on the DNRC's website: [dnrc.mt.gov/landboard](http://dnrc.mt.gov/landboard).**

STUDENT OF THE WEEK

HARRISON

Aleena Bacon is an 8th grader at Harrison Public School. She is a great student and a very good little athlete.

Aleena has played on the high school volleyball team and high school basketball team this year. She is also helpful in the classroom and has also become a mentor to her classmates.

Aleena is a positive and cheerful attitude and we are pleased to recognize her as our student of the week!



SPONSORED BY:



Excavation • Construction • Hauling

406.685.3372

105 Sterling Rd. Norris, Montana

JUDGE from pg. 1

applicants," according to the release. "The Governor must fill the position within 30 days of receipt of the nominees from the commission."

The person appointed by Gov. Bullock is subject to Senate confirmation during the 2017 legislative session, and the position will be up for election in 2018.

"The successful candidate will serve for a six-year term," the release continued.

The applicants

Luke Michael Berger According to applications available to the public via the commission's website, Berger is currently a deputy county attorney for Lewis and Clark County. He graduated high school from Beaverhead County High School, and received a bachelor's degree from Carroll College in

Helena. In 2008, he graduated from the University of Montana School of Law.

"I represent Lewis and Clark County/state of Montana in district court prosecuting felony crimes," Berger wrote in his application. "My caseload is mostly comprised of felony DUI, domestic violence, property crimes and crimes involving potential serious mental illness. During this past year and a half, I have worked on three deliberate homicide cases."

Berger listed three main reasons for seeking the job: to serve the community, a desire to be a community leader and a duty to return "home to the communities where my wife and I were raised and both serve and contribute to them in the same way," he wrote in the application.

Jed Clayton Fitch "Since I first clerked for a district judge, I aspired to

the position," Fitch wrote in his application. "I aspired to have the knowledge, discretion, experience, judgment, seasoning and understanding which the job requires."

Fitch graduated high school in Idaho and attended College of Idaho and served in the U.S. Coast Guard before graduating from University of Montana School of Law. He also attended the Naval Justice School.

Fitch is the current Beaverhead County Attorney, and wrote his "courtroom practice is almost exclusively criminal law and family services cases."

On the other hand, as county attorney, he is the legal advisor to the full panoply of county offices.

Lori Ann Harshbarger Harshbarger, a Twin Bridges High School graduate, is the sole practitioner and owner of a law firm

located in Waterloo.

After her high school graduation, Harshbarger received a bachelor's of science from Montana State University. She then studied biology at the University of Washington, before attending the Thurgood Marshall School of Law in Texas, from which she received her doctor's of jurisprudence.

"I have spent 23 years practicing law, advocating to arbitrate the collisions of society," Harshbarger wrote in the application. "After going away to college and seeing other parts of the country and the world, I returned full circle to where I started and practice law where I was raised."

Harshbarger wrote she feels armed with the knowledge and experience to handle the "varying situations before me as judge and to render justice applicably."

**"Harmonizing with Nature"**

**SWISS PRECISION**

- Home Maintenance, Repairs, tree trimming & removal
- Rooftop and deck snow removal

Office: 406-646-4844 Nursery: 208-652-7840  
swiss@ida.net  
www.swissprecision.net

**SWIER ELECTRIC LLC 579-0168**

Dennis Swier, Owner

PO BOX 514  
Ennis, MT 59729  
swier@wispswest.net

Residential • Commercial • Service Work

**Sherwood Swanson Drywall Inc.**

Hanging Custom Textures      Finishing Painting

Office: (406)682-5438      Cell: (406)599-3524

**South West Septic**

Locally Owned & Operated

For All Your Portable Toilet Needs!

Now offering **SPIFFY BIFFY LUXURY SUITE!**

Call for more information!

www.swsmt.com • swsmt@hotmail.com  
Ennis 682-7854 • Sheridan 842-7854 • Cell 596-7854

**Get Results.** advertise in The Madisonian 406-682-7755

**4 PAWS RESCUE PET OF THE WEEK**

**SAMI**

Could ya? Would ya? Come for me soon. I m ever so lonely and blue. I like to receive pets, don t know about cuddling. Came in because they didn t want me anymore - they broke up and I got sent to the rescue. I m housetrained, up to date on my vaccinations, neg for FIV/FelV and I m spayed. I really don t like dogs, but I d like you. Please call Misty about me soon. Thanks so much, Sami

SPONSORED BY:

**White and White VETERINARY**

682-7151

5098 HWY 287 N • ENNIS, MONTANA

**MADISON COUNTY WEATHER**

**Thursday**  
A few clouds from time to time. High 21F. Winds SSW at 5 to 10 mph.

**Friday**  
Partly cloudy skies. High 28F. Winds SSW at 10 to 15 mph.

**Saturday**  
Partly cloudy. High around 25F. Winds SSW at 5 to 10 mph.

**Sunday**  
Mostly cloudy with snow flurries and snow showers, especially overnight hours. Low 9F. Winds SSW at 5 to 10 mph. Chance of snow 40%. Snow accumulations less than one inch.

**Monday**  
Mostly cloudy skies with a few snow showers later in the day. High 21F. Chance of snow 30%.

**Quote of the Week:**

*"Success is not final, failure is not fatal: it is the courage to continue that counts."*

**Winston Churchill**

**SHOVEL SPOON**

7:30AM - 6:30PM TUESDAY-FRIDAY

we'll make dinner... you take the credit

Check out our selection of frozen dinners to go

108 North Main, Sheridan 842-7999  
theshovelandspoon.com

**JOIN US ON FACEBOOK!**

and be the first to get breaking news.  
facebook.com/madisonian

**4 RIVERS CONCRETE PRODUCTS**

SHERIDAN, MT WHITEHALL, MT

Quality Concrete - Premium Service

★ ★ ★ ★ ★

Front Discharge Trucks  
Ready Mix Concrete  
Washed Sand & Gravel

842-5735 • 287-3728



# Year in review: FEATURES

CAITLIN AVEY  
news@madisoniannews.com

Over the past year, I had the opportunity to meet and learn from incredible people in Madison County, as well as delve into the history of what makes the county so wonderful. Here are just a few highlights from our Lifestyle section – we at *The Madisonian* found these features most memorable!



### ROAD TO THE FAIR

This year, we introduced a series titled, “Where are they now?” and featured kids from all over the county as they prepared for the Madison County Fair.

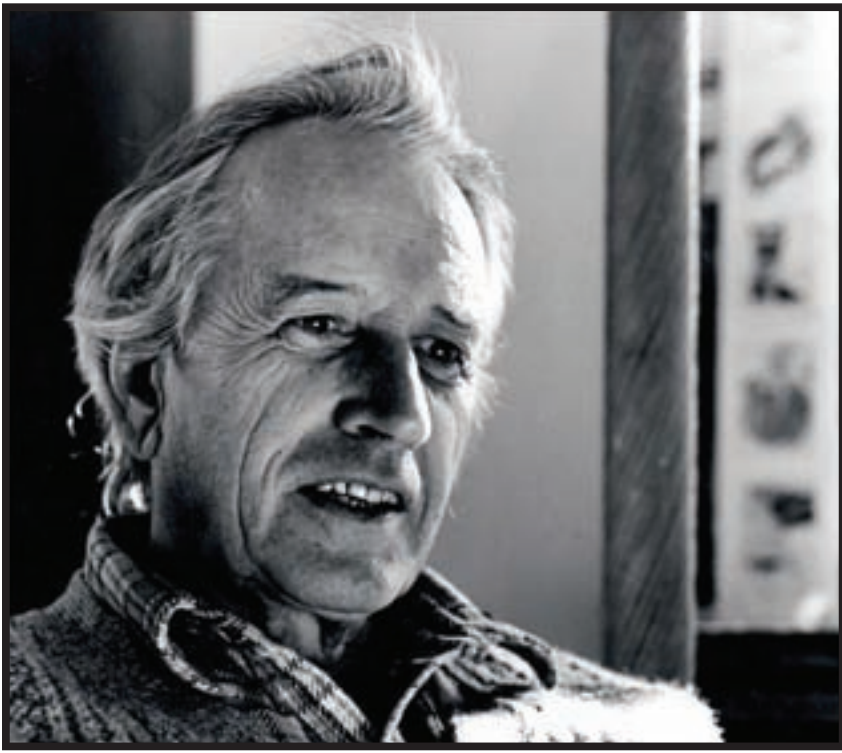
We met the Barnosky family (L) who taught us about preparing a steer for the fair and the months of work required.

We also met first time 4H-er, Mackenzie Boyko (below), and her brother Chevy. Boyko is a Cloverbud, which is the youngest age group of 4H and the first step in getting kids involved and excited about 4H.

The common theme throughout the series was the benefits of 4H and how kids learn about hard work, responsibility, giving back to their community and how to support each other.

They gain skills that will stay with them throughout their lifetime.

CAITLIN AVEY/THE MADISONIAN



### REMEMBERING TONE

After being known as one of Montana's best actors and one of the founding members of the illustrious Virginia City Players, Ben Tone passed away on April 13, 2016, just five days short of his 95th birthday.

After moving to Virginia City in the late 40s, thanks to friendly ties to the area, Ben helped Larry Barsness and Harry Smith start the Virginia City Players in 1948 – from hand digging the opera pit, to helping with lighting and props, to taking center stage, Ben played every role with purpose and ease.

Ben will be remembered as more than actor; he was a loving father, grandfather, mentor and friend, and the 2016 season of the Virginia City Players was dedicated to him.

PHOTO COURTESY BEN TONE FAMILY

### BIGHORN CAPTURE

In 2011, Montana Fish, Wildlife and Parks, in conjunction with Montana State University, started conserving the Taylor-Hilgard bighorn sheep herd by assessing disease outbreak within the herd and its influence on their population. What they found was the herd had an ability to fight off disease, and because of this, 52 bighorn sheep were trapped, tested and transplanted into another winter range in 2015 with the hope of rehabilitating other historic herds.

In February 2016, Montana FWP organized a second capture to continue these conservation efforts. Almost 40 volunteers gathered near Reynolds Pass to trap, test and transport the sheep to Wolf Creek in the Madison Mountains.

CAITLIN AVEY/THE MADISONIAN



### ICENOGGLE INDUCTED INTO HALL OF FAME

Mel Icenoggle is the definition of a cowboy and was inducted in to the Montana Cowboy Hall of Fame on Feb. 5. Inductees are nominated and selected by a board of trustees based out of their district. All 56 Montana counties are divided into 12 districts with up to 20 trustees in each district, and inductees are chosen based on their notable contributions to Montana and western heritage. Mel worked in timber, broke horses, worked on ranches and did anything he could to get by, but it was when he turned 16 that he first became interested in rodeo – something that would stay with him forever. From being a rodeo clown and utilizing wild and original acts to riding for the Brander Sisters to working in rodeo production, Mel stayed passionate about the sport. He is credited as one of the many cowboys to revive the Ennis rodeo and was a founding member of the Montana Rodeo Association.



CAITLIN AVEY/THE MADISONIAN

Features continued on B7



Purchase your Virginia City License Plate, all proceeds go to the preservation and enhancement of Virginia City Historic Landmark

Montana Heritage Commission | PO Box 338 | Virginia City, MT 59755  
www.virginiacitymt.com | 406-843-5247

# HEALTH & WELLNESS

## THE NEW YEAR

Follow these tips to refresh yourself in 2017

SUBMITTED BY STATEPOINT

Want to update and improve yourself for the New Year? A few top-to-bottom tweaks can help you look and feel your best

### Update staples

Staples and basics do not need to change with the seasons, however it is important to update these elements when they are worn out, no longer fit, or are simply out-

dated. Evaluate your shoes, bags, jackets with these criteria in mind and replace any items as needed.

If there are items that you love that are in disrepair but you cannot imagine parting with, take this opportunity to re-sole and shine those shoes and replace that lost button. You will improve these items' usefulness and breathe new life into them. You will also look more put together once these items are refurbished.

### Look back

Refreshing your look does not necessarily mean going ultra-modern. Sometimes a vintage look can make a bigger statement. Accessorize with a timepiece that is elegant, classic and will never go out of style. It will serve as a nice complement to any outfit, whether you are headed to work or going to a party.

### Get groomed

A new haircut can do wonders. Even if you are growing your hair long, a trim can make you look polished and groomed. Not only that, it eliminates split ends and keeps hair healthy. For extra edge, men may want to consider indulging in a professional shave while they are at the barber.

By looking back and looking ahead, you can get inspired to update your look for a new year.

## Learn how to cope with cold sores in the winter months

SUBMITTED BY STATEPOINT

It is winter, which means it is also the season for colds, the flu and stress, all of which can trigger fever blisters and cold sore outbreaks, which may make many people feel embarrassed. The reality is that this mild affliction is very prevalent. Fifty percent of people will experience cold sores by the time they are 20 years old. Moreover, eight out of 10 people carry the (HSV-1) virus that causes the sores, so people that have fever blisters are not alone.

The Herpes Simplex Virus lives deep within nerve tissue. While "dormant," the virus does not replicate, but when the virus becomes

active it starts producing symptoms like a tingling or burning sensation around the affected area that lets one know a cold sore is on the way. Unfortunately, fever blisters can be painful, itchy and unattractive. While there is no cure for them there are ways to manage symptoms.

Suffering from cold sores? Consider these tips from Carmex, makers of lip balms, and Dr. Neil Sadick, M.D. a New York City-based dermatologist.

- During the duration of a cold sore outbreak, avoid foods and beverages that contain acid, such as citrus fruits, red wine, coffee and tomatoes.

"The acid in these foods

could irritate the skin, slowing the healing process and increasing pain," said Dr. Sadick.

- Keep the cold sore moist. Apply a cool, clean, wet towel directly to the cold sore for about five to 10 minutes a few times each day to help reduce redness and irritation.

"You will also want to apply a cold sore treatment under your lipstick or concealer to prevent the cold sore from becoming dry and cracked," recommended Dr. Sadick.

- Use a topical treatment, at the first sign of an outbreak. It works on contact to block pain and itch with 10 percent Benzocaine, while also minimizing the appear-

ance of a sore.

- Be patient. Even if properly treated, you will need to have patience and let the cold sore run its course. A cold sore outbreak can often last from seven to 10 days, so during this time, avoid squeezing, touching or picking at a sore, as this will only delay healing.

- If symptoms do not improve, or you develop a fever, rash or swelling, it is time to consult your physician.

While cold sores are not preventable, living a healthy lifestyle, reducing stress and using a cold sore treatment in combination with a lip balm containing SPF can help to reduce your risk of outbreaks.

**Ruby Valley Medical Clinics**



Dr. Roman Hendrickson



Dr. Molly Biehl





Dayna Leavens, CPNP



Katherine Tetrault, PA-C



Chris Hartsfield  
APRN, FNP-BC



Drew Chambers, PA-C

**Sheridan**  
210 E. Crofoot  
(406) 842-5056

**Twin Bridges**  
104 S. Madison  
(406) 684-5546

**SERVICES OFFERED**

- Office Visits
- Well-Woman Exams
- DOT Physicals
- Sports Physicals
- Well-Child Check-Ups
- Life Insurance Exams
- Acute and Chronic Health Care

**ALSO PLEASED TO OFFER**

- Sliding Scale Program (based on income)
- Payment Plans
- Accepting Most Insurance including Medicare & Medicaid

[www.RubyValleyHospital.com](http://www.RubyValleyHospital.com)

The Ruby Valley Hospital is an equal opportunity provider

SERVING  
SOUTHWEST  
MONTANA

## Pinnacle Therapy

Counseling Services LCPC, NCC  
(406) 404-9053

Children • Adolescent • Family Therapy • Crisis Support  
Medicaid Provider

Independent, Authorized Agent for



**BlueCross BlueShield of Montana**

"An Independent Licensee of the Blue Cross and Blue Shield Association"

---

**JACK W DAUGHERTY**

**INSURANCE**

& Financial Services, LLC.

201 E. Main, Ennis (406) 682-4002

www.jackdaughertyinsurance.com

Ruby Valley Insurance Services

406-842-7400

## MAC'S CHC PHARMACY

(406) 842-7434

317 Madison ST. Sheridan, MT  
Monday-Friday 9 AM – 5:30 PM



We are a 5-STAR\* Pharmacy ready to help you manage your medications for better health.



\*STAR measures are the medications use measures in the 2016 CMS STAR Ratings Program for Medicare Advantage Plans that include drug benefits 5 STAR ratings on 3 out of 4 measures

To advertise



on the Health & Wellness Page

Call Us @ 682-7755

or email ads@madisoniannews.com

## DPHHS: Stay healthy, get the influenza vaccine

JON EBELT  
Department of Public Health and Human Services

The Department of Public Health and Human Services is encouraging all Montanans 6 months of age and older to get vaccinated now against influenza in order to decrease their risk of becoming ill with the flu.

In Montana, the flu season usually peaks in February and lasts through May. Officials say the vaccine is readily available.

The influenza vaccine is the best form of protection against the flu and provides protection throughout the entire flu season, even when vaccinated in the early fall. The composition of the flu vaccine is reviewed and updated yearly to better match

circulating viruses. It is important to remember that the influenza vaccine takes about two weeks to provide protection against the flu.

"Because the flu virus changes quickly and vaccine are changed in response, it is important to get a flu shot every year," said DPHHS Director Richard Opper. "Getting vaccinated now will help you and those around you to stay healthy this winter."

Influenza vaccination can reduce flu illnesses, doctor visits, missed work or school, as well as prevent flu-related hospitalizations and deaths. Last flu season, DPHHS recorded 433 hospitalizations and 33 deaths related to influenza. Of those hospitalized, nearly two-thirds of those indi-


viduals were not vaccinated against the flu.

In addition to getting the flu vaccine, everyday preventive actions like staying away from sick people, covering your cough and washing your hands with soap and water can reduce the spread of germs. Influenza vaccine is available at doctor offices, county or tribal health departments, and many pharmacies.


"When getting your flu shot, talk to your healthcare professional about other vaccines, such as pneumococcal, pertussis or shingles, which may be right for you," Opper said.

More information can be found at the DPHHS website: [www.flu.mt.gov](http://www.flu.mt.gov).

Get Results.




sales@madisoniannews.com



Dr. Jeff Squire

406-577-2380  
222 E. Main St #1C, Ennis, MT

Exams  
Glasses  
Contacts



Ennis: Thursday by appointment  
Bozeman: Monday through Friday  
9am to 6:30pm

We appreciate your patronage and will work hard to maintain your trust.



JOIN US ON FACEBOOK!

and be the first to get breaking news.  
[facebook.com/madisonian](https://facebook.com/madisonian)



# COLUMNS



## HOLLOWTOP SMOKE SIGNALS

By Art Kehler  
FOR THE MADISONIAN

### ARCTIC ANGLING

Some reservations concerning a popular winter sport

To be honest, I might enjoy ice fishing – if it wasn't for the ice. Even the term "ice fishing" is misleading because people don't fish in the ice; they fish in the water below the ice. And therein, as I see it, lays the problem.

Because humans are heavier than water, the idea of standing atop water, frozen or otherwise, just never seemed overly smart to me. Also, determining the amount of weight a given thickness of ice can support is an inexact science to say the least. What's more, the only way to determine ice



Art Kehler

thickness is to boldly (recklessly) stride out over the frozen substance and drill a hole in it. Worst of all, if during that process, an ice fisherman (aka-arctic angler) discovers the ice isn't as thick as assumed, he could find himself swimming with the fishes. Given such goose-bump-raising circumstances, perhaps I can be forgiven for not hankering to join in the fun.

As well, I question the wisdom of blissfully fishing while, all around me, loud cracking sounds echo across the lake. Nor am I inclined (while being so serenaded) to drill numerous, closely-spaced fishing holes in the already fracturing (weakening) ice. Most worrisome, such a precarious scenario could result in a classic, "Art Kehler spontaneous retreat," during which (while bellowing, "Out of the way, fools!") I would doubtless flatten anything (man or beast) in my path to shoreline safety. Why, I ask, would anyone risk such public humiliation for a couple of stiff fish?

On another less-than-praiseworthy note, it's a proven fact that a trout's metabolism slows down drastically during the winter. As a devoted warm-weather, open-water angler, who relishes fighting fully energetic trout, the idea of catching a

semi-comatose fish doesn't seem proper. Likewise, I am not thrilled with using a stubby rod (stunted crane) to unceremoniously yank a feeble quarry through a hole, as quickly as possible.

Then, there's the little matter of temperature. As I see it, ice and frigid weather just go together. Moreover, winter winds, especially when howling across ice, can quickly freeze the toughest arctic anglers to a board-like consistency. That cold, hard fact runs counter to one of my fundamental rules of fishing: "Under no circumstances should a fisherman have a lower body temperature than the fish he is trying to catch!"

Lastly, there's the issue of ice fishing houses. I can't help but wonder why a fisherman would want to fish in a house? Obviously, they provide protection from the above-mentioned inclement weather. But then, why venture out into the great outdoors just to stare at four walls? If I wanted to be housebound, I'd stay home.

Still, it must be admitted that ice fishing does provide a way for lots of folks to enjoy hypothermia. After all, it is true that, "A family that freezes together stays together." Also, if it wasn't for arctic angling, occurrences of acute cabin fever would become even more widespread than they already are.

All things considered, not even walking over the ice while wearing an arctic scuba-diving suit with an inner tube strapped around my waist could entice me to give ice fishing a try. The thought of suffering a "spontaneous retreat" while so garbed and having the mortifying spectacle recorded on numerous cell phone cameras, is simply unendurable. Therefore, I think it best for everyone's sake that I keep both my feet firmly planted on solid ground and leave ice fishing to the arctic anglers.

© Art Kehler  
*Art lives in Harri-son, Montana. His essays, stories and poetry have been published in newspapers, journals, literary magazines and online magazines.*

## NATURAL Resource News

By Rebecca Ramsey, Ruby Watershed Coordinator

### EDIBLE FOOD PARTS YOU NEVER KNEW YOU COULD EAT

Across America, food "scraps" are often trimmings, skins and seeds tossed in the garbage. But many of these are actually edible food parts with robust nutrition. Many cultures, including Chinese and Native American medicine, tapped the healthy compounds in some of these edible food parts. Additionally, using every possible food part helps to reduce waste. In the United States, organic waste is the second highest component of landfills, and reportedly 30 to 40 percent of the food we eat in this country is wasted, equating to roughly 20 pounds of food per person per month.

Take a closer look at these foods, and how get maximum use out of them:

#### Squash blossoms and skins:

Scientists have found that a compound in squash flowers have anticarcinogenic potential. Eat the blossoms raw in salads, or they are known to be delicious fried. Get them at the farmer's market or in your own garden. Squash skins have powerful antioxidants to help fight cancer causing free radicals. Buy organic if possible, and give up peeling them!

#### Kiwi skins:

Kiwifruit are great for helping to build beneficial organisms in your gut, as well as improving sleep quality. But the kiwi industry encourages people to eat the fruit's skin, noting that the skin contains triple the amount of fiber as the fruit, and adds beneficial vitamin C. Always wash and choose organic whenever possible.

#### Corn silk:

Corn silk contains proteins, vitamins, carbohydrates, numerous minerals and has been found to have anti-fungal properties. Corn silk can be chewed or made into a tea. Corn silk has been used around the world for the treatment of edema, gout, kidney stones and more.

#### Corn husks (kind of):

While not exactly edible, dried organic corn husks can be soaked in hot water and then used as a wrap to encase food to be steamed or baked such as tamales or loaded with veggies. The husk imparts a mild corn flavor into the food. Remove the husk after cooking and compost.

#### Strawberry stems:

Strawberry nutrition usually focuses on the fruit's robust

vitamin content, but it turns out, the leaves are potent health powerhouses, too. The leaves/stems are great to add to a smoothie for anti-inflammatory and disease-fighting flavonoids to help improve vascular health and prevent degenerative disease.

#### Onion skins:

Use the skins to add nutrition and flavor to your homemade bone broth recipes. Plus, skipping store-bought broths helps save money, packaging, and BPA toxic effects. Compounds in onion skins possess blood sugar-lowering potential and may improve gut health as well as lowering cholesterol.

#### Broccoli leaves:

Broccoli nutrition isn't limited to just the florets; the leaves are loaded with antioxidants to help with cancer prevention, aging and other health problems. Try boiling the leaves for a few minutes to use as a wrap alternative or chop and sauté like other greens.

#### Cauliflower leaves:

Most people choose to only cook and consume the white "head" of cauliflower, since the tougher stem and leaves can cause digestive upset for some people and tend to be tougher in texture. But others can tolerate the greens. Try roasting them with a touch of olive oil, salt and pepper.

#### Watermelon rinds:

Researchers at Texas A&M University found the rind is loaded with citrulline, which according to the study helps with heart health, improvement of the immune system, treats and prevents erectile dysfunction and more. They also make great horse treats when chopped into chunks! Use them by pickling, candying, making chutney or using in Indian

curry.

#### Bolted lettuce:

If you're a gardener, you know all about "bolted" lettuce. This marks the end of the lettuce plant's life cycle, a time when the lettuce goes into blossoming mode and sends up a thick seed stalk. If you catch your bolted lettuce early, clip off the leaves to salvage a few more summer salads, and chop the stalk to add to soups and stir-fries.

#### Certain flowers:

Chrysanthemum and Viola (pansies) are among the most mineral-dense edible flowers. Edible flowers possess healthy levels of vitamins A and C, riboflavin, niacin and minerals like calcium, phosphorous and iron. You can sprinkle edible flowers like nasturtium (slightly peppery), pansies, okra leaves or squash blossoms on salads for a beautiful presentation and extra nutrition.

#### Every part of a dandelion:

Dandelion tea is a detox favorite, but you can also use the leaves and flowers in salads, pancakes and smoothies. The dried, ground dandelion root can even serve as a coffee substitute. Dandelion greens contain carotenoids that help keep the eyes safe. Dandelion has been used to treat infections, liver problems, and is a diuretic.

Keep in mind that food "scraps" sometimes are really dense in nutrients, and have been eaten for centuries. But, always check with a medical professional to make sure these foods are right for you, and that they won't interfere with any medications you take or conditions you have. But it's a great way to reduce your waste and add something to your diet!

## How to outsmart a K9! Part 2

By Charlie Rossiter

*Last week, you heard the tale of a neighborhood menace – a dog who was getting into everyone's garbage cans. I wrongfully accused one possible culprit, but we just met the true bandit!*

I could tell he was a seasoned vet, who'd lived in multiple places and was extremely street smart. I knew right then that I'd met my match and had to figure out how to counteract this new menace. I thought about ways to alleviate the problem and landed on a plan where I would install an invisible boundary around the trash cans; an electric fence. I spent a couple hours installing the posts and wire and had it hooked up early that afternoon. My dog Tess was sitting on our porch watching all the excitement and didn't care one way or another.

After I activated the fence,

I decided to wait and watch, and watch, and watch. The sage pooch seemed to be reading my mind and showed no interest in the proceedings (I think he'd seen this ploy used before and smelled a rat). He seemed wise to my tactics and stayed well away from the trap. I'm not a patient person and today was no exception. I thought about how I might hurry the situation along and landed on a scheme where I would tempt the wayward mongrel with a scrumptious treat that dogs can't say no to – meat. I baited the trap with a pork chop from a previous night's leftovers to see whether I could generate any interest. As I walked to the cans I could see the dog was quite interested in my actions by his ears and nose perking up when he smelled the awaiting treat. I placed the chop in a position where he would see it and retired to my house

where I waited for the carnage to begin.

As if right on cue, my nemesis made his move and stealthily attacked his prey. He suspiciously was looking right and left as he proceeded to slide his head between the two wires and then it happened. The shock from the lower wire on the front of his neck made him jerk his head back hitting the upper wire nailing him for a second time on his back. He yelped as he put his tail between his legs and headed for home. At about this same time, my dog Tess, seeing that the chop was free for the taking, triumphantly rushed over to collect the prize, which was still surrounded by the active fence. I could see what was about to happen and tried to head her off but to no avail. She hit the wire and immediately yelped as she took off running for the backyard.

I did my best to catch up

to her but she sidestepped me and ran around the house, where my wife, upon hearing the commotion opened the front door to see what was happening. Tess ducked between her legs, almost upending her, and entered the house at a dead run. I followed her but she kept me at length and headed down stairs to the basement. When I finally caught up to her, she was sitting in a dark corner facing the wall with her back to me. I tried to use a calm, pleasant voice to reassure her but she turned her head to look at me and her expression was one of contempt as she scowled at me.

It took several days and a couple of bribes before she would forgive me for the deplorable attack she thought I had lured her into. One positive thing came out of this episode, we've never had another garbage can upset.

## Commodity Insite! Christmas column

by Jerry Welch

Hopes are high that 2017 will see a meaningful rebound with the commodity markets. The last time I can recall hopes being so high were in the final days of 1999 when I penned the following ditty entitled, "The year will be dear" for this newspaper. Obviously, I received a great deal of inspiration from. "The Night Before Christmas" published in 1823 anonymously, but later attributed to Clement Clarke Moore, who claimed authorship in 1837.

'Twas 'round Christmas when shouts 'n hurrahs rang clear,  
commodities have bottomed, prices will soon be dear!

'Tis no wonder hopes were high 'n voices a risin 'n a clamor  
for three long years commodities have been 'n the slammer.

But with a New Year ahead a new millennium as well,  
the outlook is rosy ... but honestly ... only time will tell.

Still, an old saying explains it all the best cure for low prices is low prices, there's not much more they can fall!

Precious metals for instance, rallied into the end of '99,  
with prices as pleasing as a bottle of fine old wine.

The bears are running for cover in what has become a rout,  
the metal markets are no longer weak, now they are stout!

Palladium 'n copper rallied throughout the year,  
once so cheap, now so dear.

Gold 'n silver won't lag far behind 'n they should put on quite a show,  
but when it comes to a market ... you never really know.

Ah, but the critter complex is sure to be the brightest light of all,

nothing will surface 't cause them 't fall!

And belly prices, belly prices they'll continue 't thrive,  
'cause by the summer of 2000, they have a destiny with a dollar five.

With the cattle herd huggin' a 54 year low,  
prices are excited 'n poised to get up and go.

Demand for beef 'tis the best in many a year  
cattlemen are sure to get misty-eyed and maybe shed a tear.

But the ugliest markets of all will continue 't be,  
grains where prices have slumped, into what is now year three.

Without help from Mother Nature soybeans will drop to \$3.50,  
if so ... the entire grain complex ain't gonna be so nifty!

Then again, she is warming Brazil and made it bone dry in the Plains.

What if, traders whisper ... the crops don't get good rains?

The answer 't that is sharp 'n loud as a shot from a gun,  
you better not be short cause the grains will have a huge bull run.

Most markets have bottomed! Everyone is joyfully glad,  
'cause for past few years much too much has been sad.

The outlook for the New Year is so bullish, to my clients I snort,  
buy the breaks 'n don't be short!

My advice for the coming year 'n beyond is simple 'n full of cheer,  
commodities have finally bottomed 'n prices soon to be dear.

Merry Christmas!

# COMICS & PUZZLES

IF CONGRESS REALLY WANTS TO INVESTIGATE THE EVIL EMPIRE'S INFLUENCE ON OUR ELECTIONS...



Editor's Note: Any editorial cartoons printed in our paper do not reflect the opinion of the staff of The Madisonian.

# SUDOKU

	4			5		9			
		6							
1		5		6	8				
9		4					2	1	
	7							8	
	2	1					9		5
			2	5		1			3
						7			
	1		3						6

© StatePoint Media  
Fill in the blank squares in the grid, making sure that every row, column and 3-by-3 box includes all digits 1 through 9.

## King Crossword

**ACROSS**

- 1 " — -la-la!"
- 4 Blue hue
- 8 Docket entry
- 12 Part of TGIF
- 13 Sitarist's rendition
- 14 Fairy tale preposition
- 15 What old soldiers do
- 17 Actress Gilpin
- 18 Sea flock
- 19 Packaged
- 20 Missouri river
- 22 One-on-one fight
- 24 Moistens in the morn
- 25 Clingy crustacean
- 29 Narc's org.
- 30 Sightless
- 31 Melody
- 32 Small telescope
- 34 On the briny
- 35 July birthstone
- 36 Ballet wear
- 37 Hiawatha's carrier
- 40 Antitoxins
- 41 Sandwich cookie
- 42 Shakespeare in-law
- 46 Historic name in TV talk
- 47 Reed instru-

1	2	3		4	5	6	7		8	9	10	11
12				13					14			
15				16					17			
		18						19				
20	21					22	23					
24					25					26	27	28
29				30						31		
32				33						34		
				35					36			
37	38	39					40					
41					42	43					44	45
46					47					48		
49					50					51		

- ment
- 8 Dome
- 28 Historic periods
- 48 Time of your life?
- 9 Pinnacle
- 30 Sad
- 49 Ordered
- 10 Aching
- 33 Rut
- 50 Stare stupidly
- 11 Oklahoma city
- 34 Emanation
- 51 Thither
- 16 Work units
- 36 Giggly sound
- 19 Flex
- 37 Barbershop need
- 20 Probability
- 38 Geometry calculation
- 21 Leak slowly
- 39 Jock's antithesis
- 22 "Loves me (not)" flower
- 40 Halt
- 23 Grecian vessels
- 42 Swine
- 25 Spill the beans
- 43 "The — Daba Honeymoon"
- 26 Gilligan, notably
- 44 Past
- 27 Stead
- 45 Longing

© 2016 King Features Synd., Inc.



# Get the Good News!

[www.madisoniannews.com](http://www.madisoniannews.com)  
The local news of the Madison Valley, Ruby Valley and surrounding areas

SUDOKU SOLUTION

6	9	5	7	8	3	2	1	4
8	7	4	1	7	2	8	3	5
3	5	9	6	4	1	7	2	8
8	6	7	2	5	9	1	4	3
5	3	6	7	4	9	8	1	2
9	8	4	6	8	2	1	3	7
4	8	1	9	2	6	8	4	5
9	8	4	5	3	6	2	1	7
1	3	5	9	6	8	4	7	2
7	9	6	4	2	3	8	5	1
2	4	8	7	1	5	3	9	6

All puzzle answers on B7

Proudly Serving all your auto glass needs since 1982

1075 NISSEN LN  
DILLON, MT 59725  
PH (406) 683-2846  
FAX (406) 683-2322

**JIM LINSOTT, OWNER**

**DILLON AUTO GLASS**  
FEATURING NOVUS WINDSHIELD REPAIR SYSTEM

BACK GLASS MIRRORS WINDSHIELDS DOOR GLASS

**BENEDICT BUILDERS LLC**

BUILDING CUSTOM HOMES & COMMERCIAL BUILDINGS SINCE 1974  
MEETING ALL EXCAVATION NEEDS TOO!

406.843.5330  
PO Box 294 VIRGINIA CITY, MT 59755

**SKYLINE SURVEYING INC.**

MARGARET STECKER, PLS · (406) 581-0144  
BOX 321, McALLISTER, MT 59740

\* Property Corner Location \* Boundary Surveys \* Boundary Realignments  
\* Family Transfer Surveys \* Subdivisions \* Construction Layouts  
\* Elevation Certificates \* Aerial Mapping \* Topographic Surveys

**Novich Insurance Agency**

"Insurance Is Our Business"

novich@3rivers.net  
PO Box 394  
Twin Bridges MT 59754  
(406)684-5264

Tyler Holland  
Pete Novich  
Joy Day  
Kathy Schafer  
Nikki Picken

**KEEP-YOU-IN-STITCHES**

JAN WOOD  
Clothing Alterations  
Custom Sewing  
682-7824 — 600-2518

**MADISON VALLEY HEATING & COOLING**

JOE VELAND  
406.682.3999

SERVICE WORK  
NEW CONSTRUCTION  
REMODELS

PO BOX 987  
ENNIS, MT 59729

# the Madison County MARKETPLACE

## ESTATE SALES

Moving? Downsizing?  
Liquidating an Estate?



**WE CAN HELP**  
AbleEstateSales.com  
Call Mike at 842-5251

## FOR LEASE

Lease opportunity. Outlaw's Cafe in Virginia City. Call 843-5322  
42-tfc-b

## HELP WANTED

Part time kitchen help wanted. Please call 406-682-4555.  
44-tfc-b

Madison Valley Medical Center in Ennis, MT is seeking a full-time Medical Collections Specialist. Responsible for establishing systems to monitor denied insurance claims and collect on outstanding patient balances. For more detailed information or to apply online, go to [www.mvmedcenter.org/careers](http://www.mvmedcenter.org/careers) or send application letter and resume to MVMC 305 N. Main, Ennis, MT 59729.  
3-tfc-b

Cardwell Store is NOW **HIRING, Part-Time** - Dependable, team oriented, outgoing, cashiers, with exceptional customer service skills. Must be willing to work weekends. Starting wage \$10.00 per hour DOE. Stop in for application or call 406-287-5092.  
45-tfc-b

Madison Valley Medical Center in Ennis MT is seeking a controller or Chief Financial Officer, depending on experience. Responsible for all financial and accounting functions, including financial reporting, financial analysis, budgeting, forecasting, accounts payable and payroll. Bachelor's degree in accounting and healthcare experience preferred. For more detailed information or to apply online, go to [www.mvmedcenter.org/careers](http://www.mvmedcenter.org/careers) or send application letter and resume to MVMC 305 N. Main, Ennis, MT 59729. Questions, please call 406-682-6862.  
6-tfc-b

## BOARD VACANCIES

**NOTICE OF BOARD VACANCIES:**  
The Board of Commissioners has vacancies on the Weed Board, the Mental Health Local Advisory Council (2 positions), the Planning Board representing the Pony, Norris, Harrison Area, the Madison Valley Cemetery Board, the Alder Rural Fire District Board and the Virginia City Fire District Board (2 positions). If you are interested in serving on any of these boards please contact the Commissioners' Office at 406-843-4277, by email at [madco@madison.mt.gov](mailto:madco@madison.mt.gov), or visit our website at [www.madison-countymt.gov](http://www.madison-countymt.gov). The Madison County Board of Commissioners also has a vacancy on the Big Sky Transportation District Board, and a vacancy for a Madison County member on the Big Sky Meadow Trails, Recreation, and Parks Special District Board. ("Members of these two boards must reside in the respective county and either own property or reside within the district boundary from which they are appointed...").  
9-2-b

## AUCTION

**NEW YEAR'S DAY AUCTION!** SUNDAY, JANUARY 1, 2016 Whitehall Community Center Auction starts 10:30am; DO 9am DOOR PRIZES INCLUDING \$100IN CASH! WE'VE SAVED THE BEST FOR THE FIRST! SEATING, FREE COFFEE!! UNUSUAL & HARD TO FIND ESTATE ANTIQUES, COLLECTIBLES (including WESTERN), SILVER U.S. COINS including MORGANS, RAILROAD COLLECTIBLES, ANTIQUE & VINTAGE FURNISHINGS including A VERY NICE OAK HOOSIER, ROSEVILLE POTTERY, BUTTER, ELECTRIC INSULATORS, BUTTER CHURNS, A FREE STANDING VICTROLA & MORE! Full Color Flyer & Terms Online  
[HAGEDORNAUCTION.COM](http://HAGEDORNAUCTION.COM)  
(406)684-5181  
9-2-b

## WE'RE ON THE WEB!

[WWW.MADISONIANNEWS.COM](http://WWW.MADISONIANNEWS.COM)

CHECK US OUT!



## FOR RENT

**BARKER VILLAGE APARTMENTS:**  
1 bedroom unfurnished apartments available in Ennis. A/C, washer/dryer equipped, private location. 1 year lease, \$650 per month plus security deposit, utilities included, non-smoking, no dogs. Call Erich Vogeli, Manager at 406-682-5737.  
15-tfc

Duplex 2 bedroom rental available in Troutdale I. Call 581-6759 for details.  
9-4-b

3bd/1bth mobile home for rent in Sheridan. Close to stores. New carpet, fresh paint. W/D hook up. No pets. \$500/month. Water included, utilities not. Call 503-314-3902 or 406-560-3558.  
9-4-b

**BARKER VILLAGE APARTMENTS:**  
1 bedroom furnished apartments available in Ennis. A/C, washer/dryer equipped, private location. 4 month lease, \$700 per month plus security deposit, utilities included, non-smoking, no dogs. Call Erich Vogeli, Manager at 406-682-5737.  
15-tfc

Place Your Classified  
**682-7755**

PETERSON'S DISCOUNT STORAGE  
Indoor & Outdoor RV/Boat storage, storage units. Ennis, 682-7442  
18-tfc-b

MADISON MANAGEMENT  
Vacation and Long Term Rentals  
570-5401  
[www.madisonmanagement.com](http://www.madisonmanagement.com)  
22-tfc

## FOR SALE



1983 Model Steel Bull Trailer. 8x8x20 foot with gooseneck over the front. 451-4791 7-2-b

Place Your Classified  
**682-7755**

1986 Ford Bronco 4x4. 302/Automatic. New Tires. In Sheridan. \$3500. 406-600-2772  
9-2-p

## SERVICES

Chimney & Vent CLEANING

Gary Kinney  
**843-5486**



Place Your Classified  
**682-7755**

Madison Valley Caring & Sharing  
Hours:  
Mon. Noon-2:00 p.m.  
Sat. 9-11:00 a.m.  
Wed. 5-7 p.m.  
Lone Elk Mall, Unit 4. Ennis.  
682-7844  
30-tfc-b

Expert Tree Care  
406-683-5592  
406-865-0000  
60' Lift Truck  
ISA Fall is ideal removing and pruning time!

## D&D Auto, Inc.

### AUTO & TRUCK SALES

We Are *YOUR* Go to Guys!  
Auto & Truck Repair - Gas or Diesel - All Makes & Models

We Make Hydraulic Hoses  
New Tires, Wheels & Tire Repairs  
Engines & Transmissions Installed - Car & Truck Accessories  
We Install Windshields - Alignments

**ENNIS • 682-4537**  
Daily Parts Deliveries to Alder, Sheridan & Twin Bridges Areas  
**24 Hour Towing (CELL 406-570-9872)**

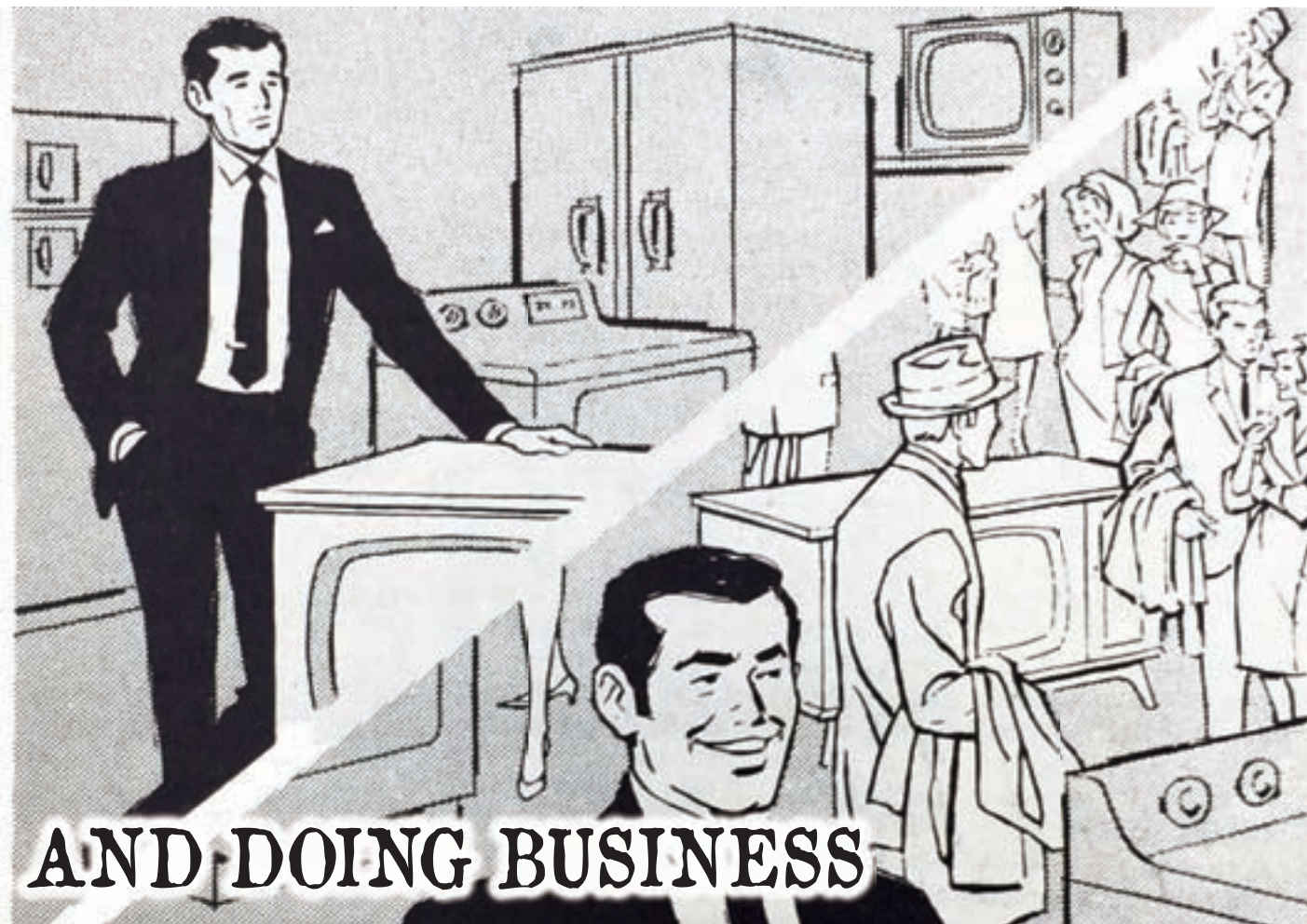
## GORGE



ABIGAIL DENNIS/THE MADISONIAN

The Madison River started gorging the weekend of Dec. 17.

## NEWSPAPER ADVERTISING COULD MAKE THE DIFFERENCE BETWEEN BEING OPEN FOR BUSINESS...



**AND DOING BUSINESS**

More than 6,500 people are waiting to read about your business!  
We reach more area residents and visitors than any other local media. Contact us today to find out how our print and online advertising solutions can help your business thrive!  
Contact Rachel! [sales@madisoniannews.com](mailto:sales@madisoniannews.com)

The Madisonian.

# PUBLIC NOTICES

## FOR THE WEEK OF DECEMBER 29, 2016

**INVITATION FOR BIDS**

Ruby Valley Hospital  
Sheridan, MT  
**RECEIPT OF PROPOSALS**  
Sealed bids will be received by Ruby Valley Hospital (RVH) and Langlas and Associates at 1019 E. Main St. Suite 101 Bozeman, MT 59715 no later than 2 pm on Tuesday, January 10th, 2017. The bids will be reviewed by Langlas and Associates and Ruby Valley Hospital in accordance with the Specifications and the

Contract Documents prepared by SMA Architects P.C.  
Bids shall be submitted on the form provided with the Contract Documents and in accordance with the "Instructions to Bidders" in the Contract Documents.  
**OBTAINING CONTRACT DOCUMENTS**  
On Monday, December 19th, 2016, bidding documents will be on file at Montana plans exchanges as listed in the "INSTRUCTIONS TO BIDDERS" and physical sets may be ob-

tained on December 19th., 2016, at Langlas and Associates office located at 1019 E. Main Street Suite 101, Bozeman, MT (406) 585-3420 upon deposit of \$100.00 per set. Plans are also available at www.langlas.com. The password can be obtained by contacting Langlas. Please ask for Matt Drake or Roger Davis for plan information.  
Documents remain the property of the Architect and must be returned. Full refund of deposit will be made for complete sets that

are returned in acceptable condition: without notes, marks, or mutilations, and within 15 calendar days after the opening of proposals. Plan holders that do not submit a proposal will forfeit their deposit.  
**PROPOSAL GUARANTEE**  
Bid Package Bids do not need to be accompanied by bid security. A performance and payment bond may be required before contract award. Please fill out the bid form correctly to include the additional amount for a performance and payment bond. If the Proposal is accepted, the Bidder may be asked to execute the Contract and fill acceptable Performance and Labor & Material Payment Bonds no later than ten (10) days after the Award of the Contract.  
**OWNER RIGHTS RESERVED**  
The Ruby Valley Hospital, hereinafter called the Owner, reserve the right to reject any or all proposals and to waive any formality or technicality in any proposal in the interest of the Owner.  
**END OF INVITATION FOR BIDS**  
(Pub. Dec. 22, 29, Jan. 5, 2017) I&a MNAXLP

c/o Jeffrey Doud  
Counsel for the State of Montana  
P.O. Box 201440  
Helena, MT 59620-1440  
(Pub. Dec. 29, Jan. 5, 12, 2017) I&a MNAXLP

**WE'RE ON THE WEB!**  
WWW.MADISONIANNEWS.COM  
**CHECK US OUT!**



What if America didn't  
**NOTICE?**

**Public notices help expose**

- fraud in government!
- dishonest businesses!
- unfair competitive practices!

**NOTICE TO CREDITORS**

MONTANA FIFTH JUDICIAL DISTRICT COURT, MADISON COUNTY  
IN RE THE MATTER OF THE ESTATE OF Probate No. DP-29-2016-32  
KESIT SOMCHIYA,  
Deceased.  
NOTICE IS HEREBY GIVEN that the undersigned has been appointed Personal Representative of the above-named estate. All persons having claims against the decedent are required to present their claims within four (4) months after the date of the first publication of this notice or said claims will be forever barred.  
Claims must be mailed to the Estate of Kesit Somchiya, c/o Berg, Lilly & Tollefsen, P.C., Attn: Jeremy J. IeFeber, 1 West Main Street, Bozeman, Montana 59715.  
DATED this 15th day of December, 2016.  
BERG, LILLY & TOLLEFSEN, P.C.  
/s/ Jeremy J. IeFeber, Attorney for Personal Representative  
I declare under penalty of perjury under the laws of the State of Montana that the foregoing is true and correct.  
Signed this 15th day of December, 2016.  
/s/ William Ross Pinsent, Personal Representative  
(Pub. Dec. 22, 29, Jan. 5, 2017) bit MNAXLP

**NOTICE TO CREDITORS**

JEFFREY M. DOUD  
JOHN C. MELCHER  
Assistant Attorneys General  
Agency Legal Services Bureau  
1712 Ninth Avenue  
P.O. Box 201440  
Helena, MT 59620-1440  
Telephone: (406) 444-2026  
Facsimile: (406) 444-4303  
COUNSEL FOR THE STATE OF MONTANA  
MONTANA FIFTH JUDICIAL DISTRICT COURT  
FOR MADISON COUNTY  
IN THE MATTER OF THE ESTATE OF DONALD LEROY MANTHA,  
Deceased.  
Probate No. DP-2016-28  
NOTICE TO CREDITORS  
NOTICE IS HEREBY GIVEN that Lana Haynes has been appointed Special Administrator of the above-named estate. All person having claims against the decedent are required to present their claims within four (4) months after the date of the first publication of this notice or said claims will be forever barred.  
Claim must either be mailed to LANA HAYNES, the Special Administrator, return receipt requested, at c/o Jeffrey M. Doud, Counsel for the State of Montana, P.O. Box 201440, Helena, MT 59620-1440, or filed with the Clerk of the above Court.  
Dated this 20th day of December, 2016.  
Lana Haynes

**Klasen Septic**

**WINTER IS COMING!**  
Need your septic tank pumped **NOW?**  
We're available!  
Call for a quote.

*We also rent portable toilets.*

**683-2063 OR 925-1076**

**Ruby Valley Hospital Physical Therapy**  
Occupational & Speech Therapy  
*Hands on care for all your body needs.*

Orthopedic & Sports Injuries		Self Care
Total Joint Rehabilitation		Home Safety
Back & Neck Care		Adaptive Equipment
Sore Stressed Muscles		Hand, Wrist - & Elbow Syndromes
Tension Headaches & Chronic Pain		Neurological Rehabilitation

Available Mon.-Fri. at Ruby Valley Hospital  
220 E. Crofoot, Sheridan, MT 59749-9508 **406-842-5081**

**OUTPOSTEVENTS.NET**  
Southwest Montana's EVENTS Calendar

Find out about these  
and much more in your local newspaper!

**Participate in Democracy.**  
**Read your Public Notices.**

**Three**  
Great Services Under One Roof!

Locally Owned & Operated  
Free Estimates - Licensed & Insured

Call Mike McKittrick Today!  
**406-682-4529**

100 Prairie Way #2 - Ennis, Mt 59729

*Beyond Words.*

**YOUR future**  
*is OUR future.*

THE MADISONIAN. 682-7755  
*Call to Subscribe or Advertise today.*

Features continued from B1

EARLY EDUCATION SERIES

In 2016, our early education series was born, as we brought you information and research regarding some of Madison County's oldest schoolhouses. The 1870s Lower Wisconsin Creek Schoolhouse was one of the earliest established in the Ruby Valley. The Pennington-Bird School (far R) was built in 1899, just a few miles west of the current Pennington Bridge, southwest of Twin Bridges. In the Madison Valley, the Bear Creek Schoolhouse (R), built in the early 1900s, is still an active part of the Cameron community. The Cameron Community Club continues to hold events in the schoolhouse and has been vital to the building's upkeep and restoration.

CAITLIN AVEY/THE MADISONIAN  
COURTESY OF PIONEER TRAILS AND TRIALS



# GET RESULTS.

advertise in The Madisonian. call 682-7755 to make a plan.



**Ruby Valley Baptist Church**  
Tony Shaw, Pastor  
842-5602

Sunday School 9:45 a.m.  
Worship Service 11 a.m.  
Sunday Evening 6 p.m.  
Wednesday Eve 7 p.m.

One block behind IGA, Sheridan



## Find Fellowship With Us

**Rocky Mountain Baptist Church**  
682-4949

Sunday School 9:30 am  
Morning Worship 11:00 am  
Sunday evening bible study and prayer time, 6 p.m.

606 Comley Way, Ennis

6 Blocks South of City Complex  
Located in the heart of Madison Valley for the Hearts of Madison Valley

**Dayspring Church**  
Worship 10:00 a.m.  
Sunday School/Nursery  
Non-Denominational Christ Centered, Spirit Led Worship  
Joel Trenkle/Pastor  
Check website for ministries: dayspringsheridan.com

596-0707 • 3648 Hwy 287  
Between Sheridan & Twin Bridges

**CHURCH OF JESUS CHRIST OF LATTER-DAY SAINTS**  
Sheridan Ward - Visitors Welcome

Sacrament Meeting  
Sundays, 10:00 a.m.  
Sunday School  
11:20 a.m.  
R S & Priesthood  
12:10 p.m.  
Mutual (Youth Group)  
Wed. 7:00p.m.

3560 | MT State Hwy 287  
Sheridan 842-5860  
Bishop Dustin 684-5255

**CHRISTMAS MASS TIMES**  
St Joseph's in Sheridan  
Dec. 24 at 4 p.m.  
St Mary's in Laurin  
Dec. 24 at 6 p.m.  
St. Patrick's in Ennis  
Dec. 25 at 11 a.m.

Father John Crutchfield • Pastor ~ 842-5588

**HARRISON COMMUNITY CHURCH**  
Harrison, Montana  
Adult Bible Study ~ 9:30 a.m.

Sunday School & Church Services ~ 10:30 a.m.  
Pastor Joe Miller  
Come Worship & Sing Praises To Our God. Spread the Word!

**Madison Valley Presbyterian Church**  
WORSHIP  
September - April ~ 11 a.m.  
May - August ~ 9 a.m.  
Everyone Welcome Fully Accessible

Rev. Jean M. Johnson  
682-4355 ~ Ennis  
Corner of S. Charles & W. Hugel

**DR. RAY TESTON**  
Pastor  
Sunday School ~ 9:45 a.m.  
Morning Worship ~ 11:00 a.m.

5050 Hwy 287, PO Box 668, Ennis, MT  
Phone 682-4244 SBC  
**MADISON VALLEY BAPTIST CHURCH**  
Aids for the hearing impaired

**Shepherd of the Hills Lutheran Church**  
The Church of Word and Sacrament  
Visitors Welcome

Pastor Ken Stensrud  
• Sunday Service 9:00 am  
• Bible Study 10:15 am  
• Sunday School 10:15 am

DEC. 24: Candlelight Service @ 7 pm  
DEC. 25: Christmas Day Service @ 9 am

Corner of Madison and Armitage St.  
Ennis, Montana 406-684-2200

**CHURCH OF JESUS CHRIST OF LATTER-DAY SAINTS**  
Ennis Branch

Sacrament Meeting  
10:00 a.m.  
Sunday School  
11:20 a.m.  
R S & Priesthood  
12:10 p.m.

Family History Center  
682-4911, 682-7415, 682-3614  
Pres. Thompson 682-7415  
133 MT Hwy 287

**Christian Science Society**  
Sunday Service & Sunday School 10 a.m.

ALL WELCOME

Each week a Bible lesson full of healing Christian concepts is read aloud in our Sunday service.

4983 US Hwy 287 N. • Ennis, Montana  
www.ChristianScience.com

**NEW BEGINNINGS CHRISTIAN FELLOWSHIP**  
Your Local Assembly of God Church  
114 N. Main, Sheridan  
842-5845

Pastor Duane Deshner

Sunday Service  
10:30 a.m. (Children's Ministry)

Wednesday (Kids/Youth)  
6:30-8:00 p.m.

Kid's Club (3 yrs-4th grade)  
Pre-Teen Youth Group (5th-6th grade)  
Youth Group (7th-12th grade)

Ruby Valley Food Pantry  
Saturdays: 10:00 a.m.-Noon

We are a church dedicated to serving this valley!

**THE BAHAI FAITH**  
See how the doves differ in beauty yet they live together in perfect peace, and love each other. They do not make difference of color a cause of discord and strife.

451-3923 or 1-800-UNITE  
www.baha'i.org

**ENNIS ASSEMBLY OF GOD**  
Loving God, Loving People

Sunday School 9:30 AM  
Worship Service 10:30 AM  
Wednesday Ministries  
Kids Club Submerge (K-6) 3:15 PM  
Family Dinner 5:30 PM  
Youth and Adult Bible Study/Prayer Meeting 6:30 PM

Pastor Greg Ledgerwood  
402 Madison Ave - Ennis, MT  
682-4197

**Madison County Episcopal Churches**  
In full communion with the Evangelical Lutheran Church in America

Join Us for Sunday Worship!

**Trinity** Jeffers/Ennis 10 a.m. adult forum 11:00 a.m.  
**St. Paul's** Virginia City Sunday 9:00 a.m.  
**Christ Church** Sheridan Sunday 10:00 a.m. Bible Study 9:00 a.m.

www.rvec.org  
Prayer requests: 682-4199 843-5296 842-7713

**GRACE COMMUNITY FELLOWSHIP**  
In Association with The Conservative Baptists of America

**ALDER SCHOOL**  
10 am  
Christ-centered, Bible Based Teaching Open Question Forum

Tel. 406-842-5915  
Pastor Tom Luksha

## AREA SENIOR MEALS

### MEALS FOR SENIORS, TWIN BRIDGES

The Twin Bridges Senior and Community Center provides meals for seniors every Monday, Wednesday and Friday at noon at the Twin Bridges Senior and Community Center. Meals are for seniors 60 years and up (spouses and caregivers are invited). Donations for meals are appreciated.

### SENIOR MEALS, VIRGINIA CITY

Senior meals for Madison County Seniors 60 and over will be served at the Virginia City Cafe on **Tuesday & Thursdays** from 11 am to 3 pm for \$4.00.

**Thursday, December 29:** Chili and cornbread, dessert  
**Tuesday, January 3:** Hot beef sandwich, mashed potatoes, peas, dessert

### RUBY VALLEY FOOD PANTRY, SHERIDAN

**Open Saturdays** from 10 a.m. - noon. Located at 114 N. Main St. in Valley Assembly (formerly New Beginnings). Serving the Ruby Valley from Silver Star to Virginia City. Contact Doug 842-5587 or Jim 842-5573 for more information.

### MEALS ON WHEELS, SHERIDAN

The Sheridan Senior Center offers meals for seniors 60 years and over **Monday - Friday**. Seniors may choose to eat at the senior center, family style for \$3.50 or have their meal delivered for \$4.00. Delivered meals are within the city limits of Sheridan and should be called in by 10 a.m. Call Shirley Sand at 842-5966.

### ENNIS MEALS ON WHEELS, ENNIS

**Tuesday-Friday 11:45 am to 12:30 pm**  
**Reservations 682-4422**

To help us plan, please call at least 24 hours in advance for meal delivery or if you plan to dine in. Ennis Senior center, 315 W Main Street

**DECEMBER 29 - JANUARY 5**  
**THURSDAY DECEMBER 29:** TUNA CASSEROLE, VEGGIES, DINNER ROLL, DESSERT  
**FRIDAY DECEMBER 30:** HAMBURGER GRAVY & BISCUITS, VEGGIES, DESSERT  
**TUESDAY JANUARY 3:** PORKCHOP SANDWICH, COLESLAW, FRUIT, DESSERT  
**WEDNESDAY JANUARY 4:** LASAGNA, SALAD, ROLL, DESSERT  
**THURSDAY JANUARY 5:** BREAKFAST CASSE-ROLE, FRUIT, TOAST, DESSERT



### SHOP SPACE FOR RENT IN ENNIS

All sizes available up to 1,200 square feet  
Heated, insulated, large doors, half bath.  
Gary at 581-3531 or Paul at 581-7878

O	H	C	A	N	C	A	S	E				
F	R	I	R	A	G	A	U	P	O	N		
F	A	D	E	A	W	A	Y	P	E	R		
E	R	N	S	B	O	X	E	D				
O	S	A	G	E	D	U	E	L				
D	E	W	S	B	A	R	N	A	C	L	E	
D	E	A	B	L	I	N	D	A	I	R		
S	P	Y	G	L	A	S	S	A	S	E	A	
C	A	N	O	E	S	E	R	A				
O	R	I	E	O	H	A	T	H	A	W	A	Y
M	E	R	V	O	B	O	E	A	G	E		
B	A	D	E	G	A	P	E	Y	O	M		

— King Crossword —  
Answers  
Solution time: 25 mins.

**ALCOHOLICS ANONYMOUS**  
Meeting Every Thurs. at 8 p.m., Church of the Valley, Twin Bridges  
**ALANON MEETING**  
Same Time - Same Place

**ALANON**  
Twin Bridges • Church of the Valley  
Thursdays, 8 pm

**ALANON**  
Pony School House • Weds. 7 pm  
Suzy 685-3692

"Keep it Simple."  
**A.A. MEETING**  
Bethany Hall, Sheridan  
(behind Methodist Church)  
**Wednesdays ~ 8 p.m.**

**Vennis Over The Hill Unity Group**  
Faced with a drinking problem? Perhaps Alcoholics Anonymous Can Help.  
SUazN - 10 a.m., No Smoking, Virginia City Library

MON. - Open, 7:30 p.m., Basement of M.V. Presbyterian Church, No Smoking  
WED. - 7:30 p.m., Trinity Church in Jeffers  
FRI. - Open, 7:30 p.m., Basement of M.V. Presbyterian Church, No Smoking

682-3490, 682-7023 Ennis  
843-5352 Virginia City

Meets every Saturday at 6 p.m. & starts with a meal.

**DAYSRING MISSION**  
3648 Hwy 287, Sheridan  
596-0707

# Finley joins the flock for the Ennis Christmas Bird Count

SUBMITTED BY ROBIN WOLCOTT  
Christmas Bird Count

On Dec. 14, 9-year-old local Finley Knapton joined the 57th annual Ennis Christmas Bird Count. He visited several sites close to town and observed birds in their winter habitats. This was Knapton's very first count and was enjoyed as part of a science fair project.

The Audubon Christmas Bird Count is the nation's longest-running citizen science project and provides a continuum of data on the health and status of bird populations. The first count was held in 1900 when Frank Chapman, an ornithologist and officer in the relatively young Audubon Society, proposed a Christmas bird census. The modern day Christmas bird counts are held between Dec. 14 and Jan. 5 all over North America. The counts are done by citizen birders who volunteer their services for a day in the field. The Ennis count was started in 1958 by Dr. P.D. Skaar and is now organized by Robin and Richard Wolcott from Bozeman. This year, Skaar's son Don was again one of the bird counters.

Birders count in a 15-mile diameter circle that includes

the towns of Ennis and Jeffers, Ennis Lake, Norris Hill, Meadow Creek and Jack Creek. The goal of the count is to count all the feathered creatures inside the circle. This year there were 21 participants covering five specific areas of the count circle while three others roamed around the entire circle area looking for species others might have missed. In addition, two local enthusiasts watched their feeders during the day adding their reports to the compilation. The count participants came from Ennis, Bozeman, Deer Lodge, Helena, Livingston and California.

Fifty-four species were recorded for this year's count – the highest was 73 species in 2011. This year also produced two species seen only infrequently in the past – a Rusty Blackbird and a Cackling Goose.

PHOTO COURTESY ROBIN WOLCOTT  
Finley Knapton, 9, from Ennis, joins the Christmas Bird Count, which took place for the 57th year on Dec. 14.



# First Madison Valley Bank gives back

SUBMITTED BY MARY OLIVER  
First Madison Valley Bank

The staff at the First Madison Valley Bank organized a successful giving tree this holiday season. Pictured are Liz Fortier, Delaney McNalley and Andrea Noack with some of the gifts.

**CROY**  
construction

Licensed - Insured - Professional  
Custom Homes - Residential - Commercial

**Gary Croy**  
owner

406-581-3531 (cell) or 406-682-7236 (office)  
P.O. Box 63 - Ennis, Montana  
bid@3rivers.net

**Get Results.**

advertise in The Madisonian 406-682-7755

**McAllister Inn**  
Steakhouse & Bar

Montana fine dining, steaks,  
prime rib special Thursdays

5566 Hwy 287 N • Lunch and Dinner  
For reservations - 406-682-5000  
CLOSED TUES & WEDS

**FIREWOOD FOR SALE**

Custom cut firewood and Semi loads of logs available for delivery

Alder Market is pleased to offer firewood and logs delivered to your location. Dry Lodgepole and Douglas Fir available. We cut to your specification. Delivery is free within 20 miles of Alder. Give us a call today (406) 842-5679, store (406) 925-9713, cell



**Don't drink and drive...those who love you won't understand why you didn't come home!**

Be The Change 406 Coalition

P.O. Box 733 Dillon, MT 59725 (406) 596-1284 BeTheChange406@yahoo.com

**HOME PARK**  
Assisted Living

Brand new home • Safe and cozy  
Comfortable, loving environment  
Private rooms

843-5133 • 504 Ray Lane • Sheridan, Montana  
homeparkassistedliving.com

**NOTICE:**

Due to a Banking change we request that you please deposit/cash your patronage checks (that you received in Oct) by December 31, 2016.

Thank you for your patronage.  
Rocky Mountain Supply



# Lucky stocking winners

SUBMITTED BY KAREN TOWN  
Ruby Valley National Bank

In Twin Bridges, Hunter Grim, pictured with his little sister Clair Grim, and Ken Walsh from the Ruby Valley National Bank wins the giant stocking.  
Matthew Stensrud won the Sheridan stocking and is pictured along with Grampa Ken and Paul Kramer from the Ruby Valley National Bank.



# A SNOWY DAY TO SKI



CAITLIN AVEY/THE MADISONIAN  
Enjoying the snowy weather with an early ski across Three Dollar Bridge.

## MADISON COUNTY SANITARIAN'S OFFICE

P.O. Box 278 ~ 103 West Wallace  
Virginia City, MT 59755  
(406) 843 - 4275 ~ (F) (406) 843 - 5362  
mcsani@madison.mt.gov

### SEPTIC INSTALLER'S TRAINING

The Madison County Sanitarian's Office will be holding a Septic Installer Training. There is no fee for attending. Lunch will be provided. The training will be held from 8:00 a.m. to 5:00 p.m. Attendance is required in order to maintain your current Installers License for Madison County.

Date: February 2, 2017

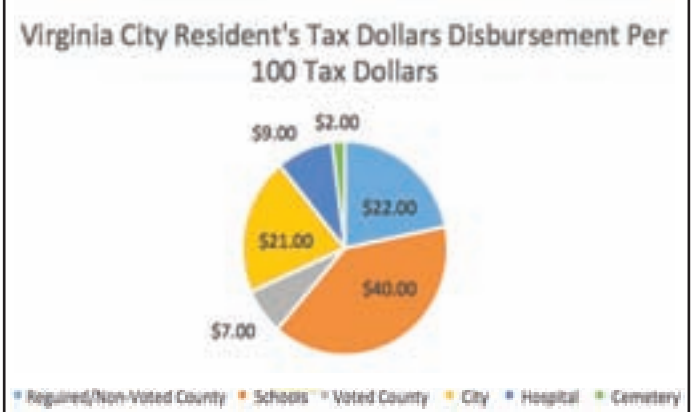
Location: Virginia City

Public Meeting Room, Madison County Administration Building

Please call the Sanitarian's Office at 843-4275 to register by January 26, 2017.

### Virginia City Resident's Tax Dollars Disbursement Per 100 Tax Dollars

Required/Non-Voted County	
General	\$ 16.28
Permissive Levy	\$ 1.98
Bridge	\$ 0.66
Weed	\$ 0.66
Fair	\$ 0.44
Airport	\$ 0.66
District Court	\$ 0.44
Library	\$ 0.44
Planning	\$ 0.44
Schools	
County Equalization	\$ 16.40
County Retirement	\$ 3.60
County Transportation	\$ 0.40
State Equalization	\$ 12.00
State University	\$ 1.60
Ennis School District	\$ 6.00
<b>Schools</b>	<b>\$ 40.00</b>



Voted County	
MadCo Nursing Home	\$ 4.83
Weed	\$ 0.42
Library	\$ 0.42
Public Health	\$ 0.42
Search and Rescue	\$ 0.35
Senior Citizens	\$ 0.56
<b>Voted County</b>	<b>\$ 7.00</b>

City	
Virginia City	\$ 21.00
<b>City</b>	<b>\$ 21.00</b>
Hospital	
Ruby Valley Hospital	\$ 9.00
<b>Hospital</b>	<b>\$ 9.00</b>
Cemetery	
Virginia City Cemetery	\$ 2.00
<b>Cemetery</b>	<b>\$ 2.00</b>

All tax collection procedures can be found in Montana Code Annotated Title 15 and tax information for Madison County can be found on the county's website.  
[www.madisoncountymt.gov](http://www.madisoncountymt.gov) under the Treasurer/Taxes page.

Public Service Information Paid for by Madison County Commissioners, PO Box 278, Virginia City, MT 59775

# Happy New Year!

**Our Clinic, Outpatient Services, and Business Office will be closed on Monday January 2nd**

**The ER and Inpatient Hospital services will be open as usual.**

**MADISON VALLEY MEDICAL CENTER**

406-682-6862 | [www.mvmedcenter.org](http://www.mvmedcenter.org)  
305 N. Main, Ennis, Montana



**Winter Session Classes Coming Up!**  
**January 16-March 10th**

ON-LINE OR IN-PERSON REGISTRATION BEGINS JANUARY 2ND

#### Classes:

- Recent Discoveries that Explain the Geology of the US through Continental Drift: **Russell Scruggs, Mondays 6-8 pm**
- Open Sew: **Kathy Olkowski & Jamie Diehl, Mondays, 4-7 pm**
- Fancy Forest Quilt: **Kathy Olkowski and Lexie Brundin, Tuesdays, 4-7 pm**
- Fly Tying: **John Way, Tuesdays, 6-8 pm**
- Back to Basics - Cooking Skills to Increase Your Home Production: **Jamie Diehl, Thursdays, 5-7 pm**
- Yoga for Athletes: **Cori Koenig, Mondays Wednesdays 6-7 am**
- Early Bird Yoga: **Cori Koenig, Tuesdays Thursdays 6-7 am**
- Felting: **Jenn Doney & Gail Barnt, Mondays 5:30-7:30 pm**
- Introduction to Amateur Astronomy: **Larry & Lonie Swenson, Mondays, 5-7 pm**
- Jewelry Making: **Kay Gogerty, Wednesdays, 5:30-8:30 pm**
- A Few Montana Novels: **Lee Robison, Tuesdays, 5:30-7 pm**
- Beginning Welding: **Charlie Ziffing, Tuesdays and Thursdays, 6-9 pm**
- Vinyasa Yoga: **Manuela Redmond, Tuesdays: 5:30-6:30 pm**
- Beginning Pickleball: **Patty Hunter, Tuesdays and Thursdays: 5-7 pm**
- Line Dancing: **Melissa Unger, Thursdays 7-9 pm**
- Learn to Play Bridge: **Denyse Lemaire, Thursdays, 7-9 pm**
- Discover Geology: **Denyse Lemaire, Thursdays, 5-to 6:45 pm**
- Basic Accounting: **co-op with MCEDC, 4 weeks, 5:15-7:15 pm**
- Beginner Quickbooks: **co-op with MCEDC, 4 weeks, 5:15-7:15pm Thursdays**
- Let's Get Growing - Seeding Starting and Sharing : **co-op with Madison Valley Public Library, Workshop, date TBD**

682-4258 • ENNIS-ECE.ORG

# OUTPOSTEVENTS.NET

B10 Thursday, December 29, 2016

GO TO [outpostevents.net](http://outpostevents.net) FOR A COMPLETE LISTING OF EVENTS

## JANUARY 6-7

**Hockey tournament, Virginia City**  
Winter Classic Pond Hockey tournament. For more information contact Justin at 579-2168.

## SATURDAY JANUARY 7

**An evening in Tuscany, Laurin**  
An evening in Tuscany featuring Tuscan wines at the tasting room. Limited seating by reservation only. Call 842-7100.

## MONDAY JANUARY 9

**Vinography, Laurin**  
Introducing a series of eight vinography evenings focused on developing a visual narrative thru image making, while enjoying a complimentary glass of wine and great conversation. Limited seats available. Call 842-7100 for more information.

## JANUARY 13-15

**Winterfest, Virginia City**  
Broomball, log saw, fire hose roll and much, much more!

## SATURDAY JANUARY 21

**Chautauqua, Virginia City**  
Chautauqua winter season begins at the Elling House Arts and Humanities Center on the third Saturday in Jan., Feb., March and April. Potluck dinner at 6:30, performances at 7:30. Call 843-5507 for more information.

## SATURDAY FEBRUARY 18

**Chautauqua, Virginia City**  
Chautauqua winter season begins at the Elling House Arts and Humanities Center on the third Saturday in Feb., March and April. Potluck dinner at 6:30, performances at 7:30. Call 843-5507 for more information.

## SATURDAY MARCH 18

**Chautauqua, Virginia City**  
Chautauqua winter season begins at the Elling House Arts and Humanities Center on the third Saturday in March and April. Potluck dinner at 6:30, performances at 7:30. Call 843-5507 for more information.

## SATURDAY APRIL 15

**Chautauqua, Virginia City**  
Chautauqua winter season begins at the Elling House Arts and Humanities Center. Potluck dinner at 6:30, performances at 7:30. Call 843-5507 for more information.

## SNOWY DAYS



PHOTO COURTESY ROBIN WOLCOTT  
The newspaper office dusted in fresh snow.

Get Results.  
ads@madisoniannews.com

**GRAVEL BAR**  
**MONTANA DELUXE**  
featuring  
**BILL DWYER & DAVE WALKER**  
**NEW YEAR'S EVE**  
682-5553

**RALPH HAMLER**  
LICENSED SANITARIAN  
Septic Application & Design  
406-842-5788  
Cell: 406-596-0437  
Sheridan, MT  
ralphhamler@gmail.com

## REGULAR WEEKLY EVENTS

### MONDAYS

**Commissioner's Meeting, Virginia City**  
Madison Co. Commissioners meet every Monday, 9:30 a.m., Annex Building

**KnitNite, Ennis**  
Meets at Right Angles Framing and Gallery from 5-7 p.m., the first and third Monday of the month.

**Bridge, Ennis**  
Every Monday at 11:30 at the First Madison Valley Bank. New players welcome.

### TUESDAYS

**Madison County Mental Health Local Advisory Council, Virginia City**  
Meeting the first Tuesday of each month from 4:30 - 6:30 p.m.

**Ennis Arts Association, Ennis**  
Meet on the second Tuesday of every month at 10:30 a.m. ennisartsassociation.org

**Children's Story & Craft Time for babies, Virginia City**  
Every Tuesday at 10:30 a.m., at the Thompson Hickman Library.

**Movie Night, Virginia City**  
Movie Night at the Thompson-Hickman Madison County Library Every other Tuesday night at 7:00 p.m.

**Open Table Tennis, Pony 7-9 p.m.**  
For all ages and skill levels - Two Tables At the Pony School Info @ 685-3481

### WEDNESDAYS

**Tennis, Ennis**  
9 a.m. til 2p.m., come play tennis at the Madison Meadows Golf Course. All levels welcome.

**Open Sew, Ennis**  
Open Sew with the Quilt Guild- open to the public from 2-5pm at Madison Valley Public Library

**TOPS, Ennis**  
Weekly weigh-ins are at 9 a.m.

Meetings at 9:30 a.m. MVMC in downstairs conference room, Jeanne. 682-3299

**Books and Babies, Ennis**  
Madison Valley Public Library, 10:30 a.m., 682-7244

**Baby Bistro, Ennis**  
First and third Wednesday of the month at the Madison Valley Public Library and 11 a.m.

**Grief Support Group, Ennis**  
Everyone welcome. Meets every Wednesday, 5:30 p.m., Madison Valley Baptist Church

**Yoga, Virginia City**  
Gentle yoga with Andrea Frederick at 6 p.m., at the library. Call to confirm.

### THURSDAYS

**MV Women's Club FIRST THURS OF EA. MONTH**  
NO meetings June, July or August.

**MV Manor Auxiliary Meeting, Ennis SECOND THURS OF EA. MONTH**  
1 p.m., Madison Valley Manor SunRoom

**Shape up, Ennis**  
Workout for seniors focusing on stretching and toning at the athletic club at 9 a.m.

### FRIDAYS

**Tennis, Ennis**  
9 a.m. til 2p.m., come play tennis at the Madison Meadows Golf Course. All levels welcome.

**Story Time, Ennis**  
Pre-K to Grade 2, 11 a.m. Madison Valley Public Library, 682-7244.

**Live Music, Ennis**  
Willie's Distillery hosts live music in the tasting room, 5:30 p.m.. See the weekly ad on this page for performers.

### FRIDAY-SATURDAY-SUNDAY

**Live Music - Norris**  
7 p.m.

**WE'RE ON THE WEB!**  
WWW.MADISONIANNEWS.COM  
**CHECK US OUT!**

**JOIN US ON FACEBOOK!**  
and be the first to get breaking news.  
facebook.com/madisonian

Modern Design in Madison County  
406.209.8330

**ENSITIO**  
ARCHITECTURE

**NORRIS HOT SPRINGS**  
MUSIC THIS WEEKEND:  
Fri 12:30 Jeff Peterson  
Sat 12:31 CLOSED  
Sun 11 Russ Chapman  
New Orleans Inspired Soul/Blues

**HOURS:**  
FALL HOURS  
Thurs-Fri-Mon 4-10  
Sat & Sun 10-10

norrishotsprings.com  
406.895.3303

**GRAHAM DRILLING**  
SHERIDAN, MT

Water Well Drilling, Solar Pump Systems for Stock Water, Pump Sales Installation, Service & Repairs

Serving Residential & Commercial Customers in Madison County for over 30 years

QUALITY SERVICE AT A FAIR PRICE

Phone (406) 842-5214 or (406)682-5290

WWW.GRAHAMDRILLING.COM

**MADISON THEATRE** 682-4023  
115 Main St., Ennis, MT

Friday, December 30 - Sunday, January 1, 2016

**MOANA (PG)**  
Friday & Saturday 7:15 pm Matinee Sunday 4:00 pm

COMING SOON:  
ROGUE ONE: A STAR WARS STORY (PG-13), SING (PG)

Evenings: Adults \$8 • Children (12 & under) \$6 Show time at 7:15 pm  
Box Office opens at 6:30 pm  
Find us on at Madisontheatre.org www.ennismovies.com

**WILLIE'S DISTILLERY**  
ENNIS, MONTANA

WILLIE'S DISTILLERY UPCOMING EVENTS:

502 E MAIN STREET, ENNIS 406-842-0177  
WWW.WILLIESDISTILLERY.COM

LIVE MUSIC EVERY FRIDAY 5:30 - 7:30 PM  
COME JOIN THE FUN, LISTEN TO SOME GREAT MUSIC AND ENJOY SPIRITS WITH A WESTERN FLAVOR!

FRIDAY DEC 30TH: RUBY VALLEY BOYS  
FRIDAY JAN 6TH: FAN MOUNTAIN FROG DOGS  
FRIDAY JAN 13TH: UNFORTUNATE COOKIES  
FRIDAY JAN 20TH: LEFT FOR DEAD  
FRIDAY JAN 27TH: STEVE ROSE  
FRIDAY FEB 3RD: JEFF PETERSON

ASK ABOUT OUR WEEKLY BOTTLING PARTIES