

Happy Memorial Day

REMEMBER THOSE WHO SERVED. ALL GAVE SOME, SOME GAVE ALL.

The Madisonian.

THE LOCAL NEWS OF THE MADISON VALLEY, RUBY VALLEY AND SURROUNDING AREAS

Montana's Oldest Publishing Weekly Newspaper. Established 1873

75¢ | Volume 144, Issue 31

www.madisoniannews.com

May 26, 2016



SEE INSIDE:

Madison County athletes compete at divisional track.

Read about it on B1.

CAITLIN AVEY/THE MADISONIAN
Corbin Wood from Ennis throws himself across the finish line during the 100 meter dash trials.

TWIN BRIDGES SCHOOL

Board canvasses election; school focuses on hands-on safety training

ABIGAIL DENNIS
editor@madisoniannews.com

The Twin Bridges School Board rescheduled their regular Tuesday night meeting for May and instead met on Monday, May 16, so their meeting would not conflict with the spring concert. "It was a pretty quick meeting," said Superintendent Chad Johnson. "It only lasted about an hour."

The board canvassed the election results – Twin Bridges voters passed a general fund levy for \$20,000 with 114 votes for and 55 against and also passed a one year building reserve levy for \$25,000 with 97 for and 72 against.

"Our voter turnout was pretty low and most were mail in ballots," Johnson said. "We had to cut our budget by about \$38,000 due to a drop in enrollment, so then we asked for \$20,000 and the community was gracious enough to help us out."

Trustee Allison Wentzel's seat was the only one up for election this year, and since she was the only one who ran, she was re-elected.

"We assigned our board chair, our vice chair and committees and they are exactly the same as they were," Johnson said. "(Wentzel) is the chair and (trustee) Lori Harshbarger is the vice chair. We have some consistency this year."

School safety

At the end of April, five deputies from the Madison County Sheriff's Office and Sheriff Roger Thompson spent two days in Twin Bridges to conduct a hands-on training with school staff.

"On April 28 we had a PowerPoint presentation on active intruders with national data," Johnson said. "And then on Friday, (April 29,) we did applicable, hands-on things."

Thompson and another deputy attended a course on how to instruct safety classes in February, he said.

"Then in mid-April we did a training in Harrison," he said. "And then at the end of the month we were in Twin (Bridges). I think it's extremely beneficial."

Thompson said he received feedback from participants and all of it was positive.

"It's hands-on," he said. "They can practice techniques instead of just sitting and listening to a lecture. They learn better and like it more."

Johnson said the deputies broke the participants into groups and did hand-to-hand training.

"Then (deputy Mike) Tilstra suited up in pads and became an intruder and they put us in all kinds of scenarios," Johnson said. "The teams had to respond accordingly, in terms of either running, hiding or fighting."

Turn to SCHOOL on p. A2

FINAL FORUM

Twin Bridges Rotary Club hosts one last candidate forum before primary election

CAITLIN AVEY
news@madisoniannews.com

With the primary election quickly approaching, the Twin Bridges Rotary Club held a candidate forum at the Twin Bridges High School on May 19, with candidates running for Senate District 36, House District 71 and Commission District 1.

"This is not intended to be a debate," said Frank Colwell, rotary member and host for the forum. "We've seen enough of that, haven't we?"

Each candidate was given a two minute introduction to a crowd of 65 community members before questioning and a three minute wrap up.

Senate District 36

Two candidates have filed to run for Senate District 36, which serves all of Beaverhead and Madison counties as well as small portions of Jefferson and Silver Bow counties. Jeff Welborn and Dale Stewart are both running on the Republican ticket and are both based out of Dillon.

Welborn, who is serving his fourth and final term in the Montana House of Representatives, is running for his first Senate term and says his experience in the House qualifies him for the Senate seat.

Stewart, a pastor originally from Michigan, has been in Dillon for 18 years and credits his years of service to his campaign.

Similar to the forum held May 4 in Virginia City, candidates were given a

short time period to answer a multitude of questions, mostly swirling around state issues and the transfer of private and public lands, but the crowd in Twin Bridges offered new concerns for the candidates to think about.

In a question about making government smaller, Welborn stated there are lots

Turn to FORUM on p. A2



CAITLIN AVEY/THE MADISONIAN
Sixty-five community members attend the forum.

South Tobacco Roots Watershed

BLM prepares to analyze current natural resource conditions on public lands

ABIGAIL DENNIS
editor@madisoniannews.com

Starting this summer, the Bureau of Land Management's Dillon field office will analyze existing resource conditions on BLM-administered public lands within the South Tobacco Roots Watershed.

"Our field office is divided into 16 watersheds," explained Pat Fosse, BLM assistant field manager. "Every 10 years we have an assigned interdisciplinary team that looks at the public land in each watershed to look at land health."

The team will consist of people who specialize in forest health, fuels, range, wildlife, fisheries, hydrology, weeds and recreation, Fosse added.

The South Tobacco Roots Watershed is located in Madison County and essentially runs from Valley Garden in the east around the Virginia City Hill and up through Alder and Sheridan to Twin Bridges – it also includes 33 grazing allotments and approximately 34,000 acres of BLM-administered public land.

"Anything that flows down into the Alder Gulch and the Ruby River is (part of the watershed)," Fosse explained.

On the ground

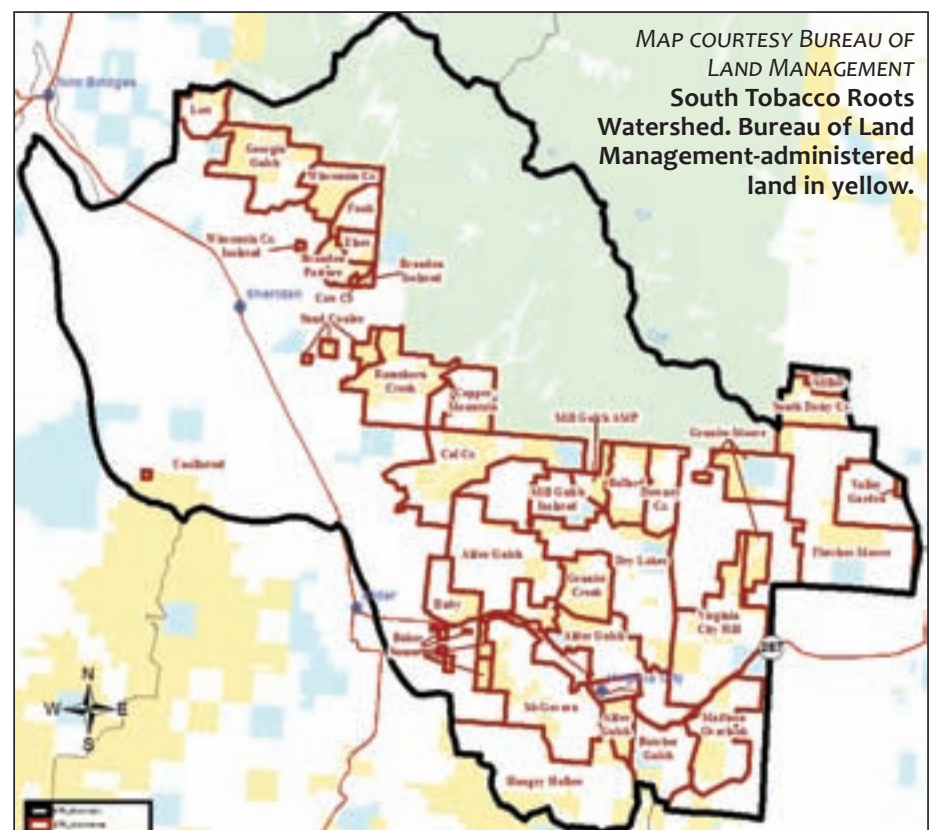
Over a three-week period this summer, Fosse and the interdisciplinary team will walk all the streams and examine upland and forest conditions, she said.

"We will go back and look at the projects we did from our assessment 10 years ago," she said. "We've done some burns to remove encroaching juniper. We've had timber harvest because of dead and dying timber. We've done some conifer removal in riparian areas and revived livestock grazing on several allotments. We've done work on roads and increased our weed management."

This summer's mission will include examining how effective those projects were, in addition to looking at the overall health of the land.

"If it's all healthy we're good to go and we'll continue the grazing permits and whatever else is within our circle of influence," Fosse said. "But if we find issues, like say there is more opportunity for timber sales, then we will make management recommendations."

Turn to BLM on p. A2



RUBY VALLEY NATIONAL BANK
Member FDIC
P.O. Box 417 • Twin Bridges, MT 59754 (406) 684-5678
P.O. Box 587 • Sheridan, MT 59749 (406) 842-5411

CONGRATULATIONS TO THE GRADUATING CLASS OF 2016!
Take us with you when you go to college!
RubyNet Internet Banking
BillPay @ www.rubyvalleybank.com
WebStatements
Visa® Check Card
24 Hour Better Banking @ 888-842-5121

TABLE OF CONTENTS

Local News ----- A1-3, 5-6	Columns-----B3
Opinion-----A4	Comics/Games-----B4
Obituaries-----A4	Classifieds-----B5
Lifestyle-----B1	Public Notices-----B6
Health & Wellness ----- B2	Calendar-----B10

Visit us online at
www.madisoniannews.com

Conforming Mortgage Fixed Rates

30 Years - .000% Points
3.490% Rate 3.601% APR

15 Years - .000% Points
2.750% Rate 2.946% APR

Rates subject to change without notice. APR calculation is based on a \$200,000 loan amount with a 1% loan origination fee, \$125.00 processing fee, \$295.00 document processing fee, \$275.00 settlement fee, \$20.00 tracking fee, \$11.95 Mers fee, \$4.00 life of loan flood determination fee, \$4.00 transcript fee, 15 days of prepaid interest and *discount point fee as stated above.

If you haven't enrolled for E-Statement delivery, the time is now.

Your statements will be made available to you at the touch of a button ... no more waiting for the mail and, most importantly, it's paperless!

Thank you for banking with www.bankingonthefuture.com

AUTO LOANS
 AS LOW AS
4.5% rate
4.879% APR

Rates subject to change without notice. APR calculation based on \$20,000 loan amount with a \$100.00 loan fee, 60 monthly payments of \$499.26 on approved credit.

FIRST MADISON VALLEY BANK
 Member FDIC

Office: 406.682.4215 • Toll Free: 888.622.4215
 213 E. Main St • Ennis, MT 59729

WWW.BANKINGONTHEFUTURE.COM

B&E CONVENTIONAL FRAME HOMES
 COMMERCIAL
 REMODELS & ADDITIONS
 HAND-CRAFTED LOG HOMES

All phases of construction, design and consulting

CUSTOM BUILDING & DESIGN



e-mail: bande@3rivers.net | www.bandeconstruction.com
 brad bullock 581-4117 | ken evans 490-2758 | office 682-7942
 p.o. box 1444 Ennis, MT 59729

Yellowstone Horseshoeing

Rusty Wiseman - Farrier
 406.581.4600

Gentle Horsehandling
 Reliable - Prompt Service
 Honesty - Integrity
 Knowledgeable

MOUNTAIN VIEW TV & SATELLITE

dish AUTHORIZED RETAILER **DIRECTV**

ELECTRONIC SUPPLY

(406) 682-7858
 (406) 596-1513
mtmww@3rivers.net

Jim Forsberg
 Mountain View TV & Satellite, Inc.
 6 Sunrise Loop Ste B
 Ennis, MT 59729

Lisa Brubaker, LCSW, LLC
 Licensed Clinical Social Worker

It's never too late to find balance.

PO Box 602
 Ennis, Montana 59729
sw.privatepractice@gmail.com
 (406) 670-4546

• Individual & Couples Counseling • Specializing in Adults & Adolescents



HARDY DRYWALL

FULL SERVICE DRYWALL, PLASTER & STUCCO

406-596-3137

FORUM from pg. 1

of areas in which government can be made "smaller." "The problem is the state budget," he said, adding that around 80 percent of the budget goes toward corrections, education and health and human services. "So if you really want to make a meaningful cut, or noticeable cuts, then you have to start having discussions like do we kick Grandma out of the nursing home and cut her medication off or do we start emptying our prisons and put convicts back out on the street?"

Welborn said there are ways and departments to make cuts that will not affect the budget as much, but someone will always lose.

"It's tough," he said. "Someone's going to get their ox gored."

Stewart said he would look at the issue differently by trying to gain as much local control as possible.

"I don't think we have to have everything on a state level, let's bring control back into the local level," he said. "What can we do as a local community and govern ourselves? I think that would, by nature, you know, shrink the government on state level and a federal level as well."

Both Welborn and Stewart stated they foresee state and lo-

cal budgets being a big issue in the coming session, as well as land ownership and infrastructure funding.

House District 71

Two candidates have filed to run for the Montana House of Representatives - current Montana House Representative Ray Shaw and previous Representative Bob Wagner.

Wagner, a self-proclaimed "lover of the constitution," served in the Montana House of Representatives from 2009-2013, and was defeated in the 2014 election by Shaw.

Shaw, a longtime resident of Madison County, is running for his third term in the house, hoping to continue to "serve you the people, we the people."

To start, both Shaw and Wagner were given the same question as the Senate candidates, regarding things they think would help to make government smaller.

Wagner stated he believed it was an "easy" fix to shrink government at the local level.

"Bind them down to the constitution," he said, adding the importance of bringing government closer to home.

"Our social systems eat up a huge amount of our budget - how do we cut those?" said Shaw, adding the best way to make cuts to the budget is through the "exploded" prison

system.

Shaw also mentioned the importance of infrastructure funding in the upcoming session and determining where money for that funding will come from.

"We're going to have to take a very close look at all of our programs because the money is not going to be there," Shaw said.

Similar to the forum on May 4, both representatives also answered questions from the public regarding natural resources and the transfer of public lands.

Commission District 1

Three candidates have filed to run for the open commissioner seat - Dan Allhands, Eli Thompson and current commissioner Dave Schulz. Only Allhands and Schulz were present at the forum.

Allhands, a lifelong resident of Madison County and rancher, is running because he believes "it's time for a change" and has concerns regarding fiscal responsibility.

"It's something I'm going to learn," he said about the position. "But I believe I have a common sense approach with a common sense attitude."

Schulz is running for his fifth term as commissioner and hopes to continue to serve the community.

"I believe I have the talent, experience and capability to serve you," he said during his introduction.

When asked what the main issues are in the foreseeable future, both candidates addressed the county's nursing homes and senior programs, as well as potential incorporation at Big Sky.

Allhands added the importance of the area's natural resources and keeping them within our reach.

"We need to stand up to our agencies," he said.

Schulz added the importance of planning and future development to his list of potential issues.

"Madison County has been found," he said, referring to future growth in the county.

Commission candidates addressed questions regarding roads, the potential need for a jail in Madison County and the future of the county budget.

While Schulz has experience working for the county under his belt, Allhands admitted he has a lot of learning to do.

"I haven't been in the seat for 16 years, so I've got a lot to learn," he said. "But I can surely do it."

Closing

All the candidates gave closing statements and thanked the community for their at-

tendance - they all vowed to look out for the best interest of their districts.

"Remember, June 7 is the primary," said Colwell before dismissing the crowd. "Remind your neighbors, friends, family to go out and vote. Regardless of how you vote, it's important that you get out and vote."

SCHOOL from pg. 1

School safety is at the forefront of national - and local - discussion.

"We had plans set in stone already about what to do if there was an intruder, but we

get a lot of questions about what would actually happen," Johnson said. "It was a drill but we took it very seriously."

Thompson said it is unfortunate, but armed intruder incidents are on the rise.

"The odds are in your favor

that you will never have to experience it, but unfortunately, it is occurring and people target schools," he added. "We leave it up to the schools to make the decision on what type of training they want - we don't force training on them, but if

they request anything we will do what we can to help."

Johnson said he wants to make the training an annual event, and would even like to include students in the future.

"Everybody needs to be aware," he said.

BLM from pg. 1

According to a BLM press release, part of the team's work will involve determining whether or not the standards for rangeland health are met on each allotment within the watershed.

"Standards include: maintaining properly functioning upland and riparian areas, assuring that water quality and air quality meet state standards and providing for biodiversity," the release states. "Forest

health, fuels conditions and conifer encroachment issues are also included within the land health standards. Where standards for land health are not met, contributing factors will be identified and recommendations for corrective action will be developed and presented by the interdisciplinary team."

Timeline

After the on the ground work this summer, Fosse said the team will craft a watershed

assessment report in the fall.

"It will say, 'here are the conditions of public lands and the initial recommendations we have,'" Fosse said. "It's a scoping document to get public comment."

Once public comment is received, Fosse said the next step is to craft an environmental assessment to look at any management alternatives.

"For example, if livestock grazing is causing unacceptable land impacts, we would go

meet with that permittee and sit down at their kitchen table to look for a win-win deal," she said. "Something that would not impact their operation, but also improve resources. Then we come up with alternatives."

Fosse said the EA should be completed in about a year. Following a public comment period, a decision would be made on anything that may be changed to better the health of the land.

How well do YOU know Madison County?

Thanks for playing by the rules last week! To even the playing field, we asked you call after 9 a.m. on Friday the week the paper comes out. We're continuing that this week, so if you know where the photo was taken, be sure to call after 9 a.m. on May 27! Thanks!



Quick! Call us if you know where we were standing when we took this photo. And tell us what mountains those are!

682-7755!!

THIS WEEK'S CONTEST IS SPONSORED BY

Shovel & Spoon
 Sheridan, MT
 and
Maple's Coffee
 Ennis, MT

Hip, hip hooray for Charlie Endean! He knew this was the countyline near Sappington Bridge between Three Forks and Harrison.



STRUCTURE FIRE UP NORTH MEADOW CREEK

Firefighters battle the blaze through the night, contain fire

ABIGAIL DENNIS
editor@madisoniannews.com

On May 22 at 10:35 p.m., the Madison Valley Rural Fire District received a call for assistance, indicating a barn fire up Aurora Creek, located off North Meadow Creek in McAllister.

"It was a structure fire," said MVRFD assistant chief Steve Orr. "There were two occupants in the structure at the time of the report. They both got out."

Orr said MVRFD had some "difficulty" accessing the property since it was in a rural location.

"We found the structure was well involved when we got there," Orr said. "Probably two-thirds of it was already burned to the ground."

MVRFD received assistance from Virginia City Rural Fire Department and Harrison Fire Department. The Ennis Ambulance and Madison County Sheriff's Office were also on scene, Orr added. Firefighters focused on defensive tactics – instead of entering

the structure to fight the blaze, they contained the fire and kept it from spreading.

"We were on scene at least six hours," Orr said. "We cleared the scene up there at 4:49 a.m. It was a long night. Then we had to come back and make ready for any other calls, so a lot of us got home around 7 a.m."

There were no injuries as a result of the fire. Currently, the cause of the fire is under investigation by MVRFD chief Shawn Christensen, Orr said.

PREVENTING TRAGEDY

CAITLIN AVEY
news@madisoniannews.com



On Monday, May 23, students from Sheridan high school and junior high gathered along the football field for a mock trauma and injury prevention project put on by the Ruby Valley Hospital.

Brenda Green is the trauma coordinator for the hospital and said this was the first year the RVH has put on the event.

"We hope to make it an annual thing and hope to incorporate the Twin Bridges students as well," she said.

Since RVH is so small, they are not required by the state to conduct these types of awareness projects to the students and community, but felt that since they see trauma victims in the hospital, it was important.

"It's a good way to bring awareness to these kids about the choices they make before getting behind the wheel," said Green. "Whether it's drunk driving or texting and driving, they need to think about what they do while driving."

Representatives from the Ruby Valley Ambulance, Sheridan Fire Department, Madison County law enforcement, K&L Mortuaries and the Life Flight Network out of Butte were all on scene as they simulated the duties and responsibilities emergency responders complete during a distracted or drunk driving incident.



Clockwise from top left

ALL PHOTOS CAITLIN AVEY/
THE MADISONIAN

The Sheridan Volunteer Fire Department uses a hydraulic system to rip a car roof off in order to transfer a victim.

Members of the Ruby Valley Ambulance load an ejected passenger onto a stretcher during a trauma and injury prevention simulation in Sheridan on May 23.

One victim is life flighted during the simulation.

Students watch as the helicopter transfers an injured victim during the trauma and injury prevention simulation.



BACK IN ACTION ... AND ONLY A LITTLE SORE!



Hi readers,

I've cut back on writing my column. Instead of taking up weekly paper space, I'm going to write when I have something fun to report. Or, something not so fun.

This time it's the latter. Earlier this month, I had another new experience with my horse, Eddie. And it wasn't good. In fact, it was very bad. Eddie and I were spending the weekend helping move cows and branding at our friends' place up North Meadow Creek. But the two of us didn't end up being much help. About one hour into the weekend, I was put out of commission.

Eddie kicked me! He and I were doing ground work when he got riled up and lashed out at me with his hind leg, connecting solidly with my pelvis ... OUCH!

I've been told that if you spend much time around horses, getting kicked is likely to be one of those *when*, not *if*, experiences. Being kicked by a horse isn't something I would wish on anyone, although it certainly has proven to be a learning experience for me. I call Eddie my "little horse," and think of him as sweet and gentle, but I need to remember he's a living being with an independent nature. And on top of that, though he's my Little Eddie, he's considerably bigger and stronger than I!

After I had spent a good part of the weekend sulking, utterly embarrassed about the incident, Mike said something that reassured me. He pointed out that up until a few months ago, I couldn't even saddle a horse without having someone check my work.

I spend a lot of time around horse people. I watch cowboys work cows, rope calves and handle horses with ease, and I get frustrated with my inexperience. It took Mike's reminder that it's not how I stack up to seasoned horse people, but how far I've come in my own short journey.

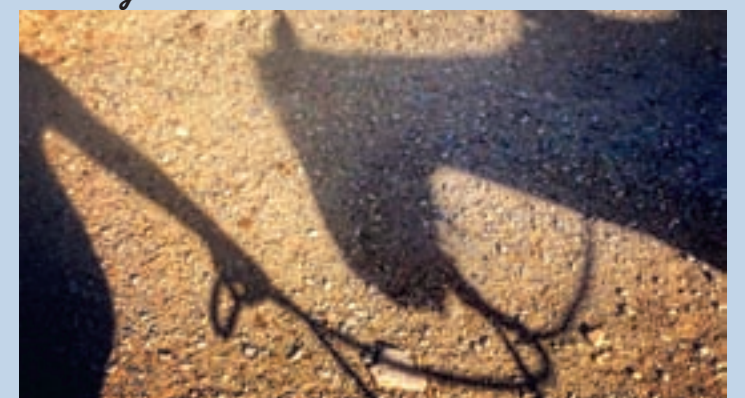
When I moved to Madison County I was out of my element. I grew up in midtown Kansas City, attended college in Chicago and traveled to large metropolises around the globe before settling in Montana. Because of my past experiences, I can navigate subways, hop on and off planes and drive in five-lane rush hour traffic without a second thought. But put me on a horse and point me toward the hills and I am at a loss.

The most important thing I've learned since I arrived two and a half years ago is to have the willingness to try. I don't need to be the best at something to enjoy learning and experiencing it.

My can-do attitude and choosing to say "yes" to new challenges has impacted and enriched my life and my work at *The Madisonian*. But, I have come to realize I don't have to be an expert on everything. I just have to know who to call!

Someone sent me a fantastic quote that truly applies to life: "You never learn anything from listening to yourself."

Abigail



OPINION

The Madisonian.

Established in 1873

(USPS 325-340)

Montana's Oldest Operating Weekly Newspaper

Owners/Publishers:

Susanne Hill & Erin Leonard

Editor: Abigail Dennis

Accounts Payable/Receivable:

Susanne Hill

Art Director: Erin Leonard

Staff Writer/Projects Assistant: Caitlin Avey

Sales/Circulation: Amber Greiff

Contributors:

Keith Axberg, Gen Pierce, Art Kehler, Stacy Gatewood, Kelley Knack, Nancy Nesbit, Christopher Mumme, Matt Hill, Gerry Mooney, Keri Montgomery, Charlie Rossiter

ENNIS, MONTANA

- Madisonian Editorial Policy -

Editorials are intended to acquaint our readers with the Editor's viewpoints on matters of public importance. Guest editorials and letters from readers (Letters to the Editor) reflect the opinion of the writers and do not necessarily reflect the opinion of the Editor or the staff of *The Madisonian*.

- Press Release Policy -

•*The Madisonian* staff will give all press releases full consideration, but ultimately retains the authority to determine whether or not to publish releases.

•Content must be factual and objective.

•Content must not contain advertising language (such as "Thank you," "Congratulations," "call now," "to buy tickets for," "now showing,") or include pricing.

•Items of a general business interest are appropriate for advertising—see advertising policy and current rates.

•Content must not be derogatory to competing companies or organizations.

•Content may only be submitted and published once.

•There are no guarantees that press releases will be published.

•*The Madisonian* may edit submissions for grammar and content.

•*The Madisonian* reserves the right to make all determinations relative to the above policy.

- Letters to the Editor/Readers Speak Policy -

The Madisonian encourages the opinions of readers on public issues and matters of local concern. Letters must be close to 350 words. Please include the writer's name, address and phone number. *The Madisonian* reserves the right to edit content for grammar, good taste and libel. We also reserve the right to reject or delay publications.

Announcements and letters of a commercial nature will not appear in this column.

- Display & Classified Advertising Policy -

The Madisonian accepts most advertising, but may turn away any advertisement for any reason. It is up to us to decide on placement and content acceptability.

The advertisements in this publication are not necessarily the opinion of or supported by *The Madisonian*.

Please note: Our client information is confidential.

~ Subscription Rates ~

In-State - \$35.00/1 year or \$60.00/2 years • Out-of-State - \$45.00/1 year or 75.00/2 years (e-Edition complimentary with print subscription)

\$30 - e-Edition only •\$40 - 6 mos. print/1 year e-Edition

Postmaster: Please, Send Address Changes to:

The Madisonian, P.O. Box 365, Ennis, MT 59729

Phone 406-682-7755

Toll Free 1-888-238-7849

email: editor@madisoniannews.com

WHOURS OF OPERATION:

Monday - Friday ~ 9 am - 5 pm - Call ahead as we're short staffed and want to make sure we are available to you!

Any submissions to our paper, including photos or content, may be used in any of our print and digital products.

NEWS & ADVERTISING DEADLINE

5 p.m. - Friday

WE OFFER COMPLIMENTARY OBITUARIES

Guidelines: Must be 450 words or less and one photo. (Otherwise, it will be 25 cents per word thereafter)

Please call or email:

682-7755 or

editor@madisoniannews.com

President Obama and Senator Tester do it again

Dear Editor,

President Obama sent all the schools in America a letter ordering them to allow self-identified transgenders use of all public bathrooms, showers and dressing rooms. He stated it was an issue of fairness designed to prevent bullying. The failure to do so may result under Title IX in cessation of all Federal educational funding to the states. Title IX went into law in 1972 and provides that "No person in the United States shall, on the basis of sex, ... be denied the benefits of, or be subjected to discrimination under any education pro-

gram ... " Within days, Senator Tester in lock step announced his support for President Obama's position.

It is estimated that transgenders comprise 0.03 percent of the entire population in the U.S., which computes to about or about 0.007 percent of the Montana student population, or in other words, about 70 students. Notwithstanding the miniscule number of transgenders in Montana, every school in Montana will be required to expend scarce resources to implement the intent of the edict from Washington.

I am against bullying of any

kind against any number for any reason and support transgender rights, but if Senator Tester and President Obama think bullying will stop because of the free use of facilities, then they are not competent to hold office, though it does explain the Iran nuclear treaty. Rather than allowing educators and school psychologists to deal with the problem on a case by case basis, President Obama again demands the states submit to his will.

As usual, President Obama sent this order without discussing the issue with the states. The order recklessly does not provide a requirement for verifying

transgender status. Also, it is not clear Title IX provides any authority to issue this order. In 1972, transgender was not an issue before Congress in enacting Title IX. Title IX uses the word sex, and as far as I know transgender is not a third sex. President Obama's attempt to use Title IX to support his dismantling of America's social values is ironic since the students it will harm are those it was designed to protect: our sisters, daughters and granddaughters.

John Bingham
McAllister

The June primary: A special day

Dear Editor,

That special day is nearing. I cannot wait. No, not Christmas; not my birthday. The special day is the June primary election.

I told my friend I do not give a damn about the primary. But he told me the dam is not part of the election and I should not say bad things about the dam. I guess that is water over the dam, or is it water under the bridge? Okay, so I will vote.

The question is, do I vote for the person or the party? A difficult question. I did not even

know they were going to have a party. I am not sure I will be invited to the party. I hope so.

I listened to all the candidates, what they plan to do - they say all the things that are wrong with this country and it is the fault of the other party. I was not invited to that other party either. What went wrong? No cake, no ice cream?

Then I was told I needed to vote because every vote counts. But they never tell you what it counts for. They tell me it is my duty to vote and make America better again. What does better

again mean? Better than what? I need to know before I vote.

I still do not know, should I vote for the party or the person? I was told I should vote for a conservative. But I need to know what a conservative will conserve. I was told to vote for a liberal. But I need to know what they will liberate. I was told to vote for a Tea Party candidate. This sounded like a strange brew.

I was then told to vote yes on issue no, and to vote no on issue yes. For Pete's sake, I am so confused. Now I need to vote for Pete. But I was told Pete is not

running because of term limits. I do not know which term they are talking about. Maybe he did not write a term paper so he cannot run. Maybe he should just walk and not run.

I just cannot wait for the June primary. I cannot wait for the party. I bought a new shirt for the party. But I lost my shirt when I paid taxes. Last time the candidates promised me less taxes. Their less was my loss. The shirt was ugly anyway.

LaVon D. Brillhart
Dillon

Support Jeff Welborn for Senate

Dear Editor,

I am excited to support my good friend Jeff Welborn for the Montana Senate. Welborn is hardworking, a smart legislator and always puts the

interests of the people first. Welborn has been a leader in working for better infrastructure, higher paying jobs, conservative healthcare reform, water rights and bringing an end to the corrupting influence

of dark money. More importantly, Welborn has always shown he is willing to stand up to the party bosses and do what is best for Montana. You cannot go wrong, once again electing Welborn. Vote for Jeff

Welborn for the Montana Senate. Madison, Jefferson, Silver Bow, and Beaverhead counties will be well served.

Steve Fitzpatrick
Great Falls

Asking for your support of Ray Shaw

Dear Editor,

I am writing to ask your support of Ray Shaw's reelection as your representative in House District 71. I served with Shaw in the 2013 Legislative Session and worked with him in the 2015 session. Shaw is dedicated, focused, thoughtful and honest in his delibera-

tions. He is not a robot, blindly supporting ideological issues just because some think he should. He listens to his conscience and his constituents, carefully considering what is best for Madison, Jefferson and Silver Bow counties.

I know Shaw to be a legislator who genuinely studies the issues, asks lots of questions

and takes his decisions seriously. His conservative values serve his district citizens well and his agriculture experience is a valuable asset.

As a retired military veteran, I was pleased that Shaw was supportive of many military and veteran bills that were considered. Please vote for Representative Ray Shaw for

House District 71 this primary election and return one of the best legislators that I have had the pleasure of knowing and serving with.

Roger A. Hagan
Great Falls

Jeff Welborn, a man of honesty, integrity

Dear Editor,

I know Jeff Welborn as a man of honesty and integrity. I was thrust into the legislative process in March of 2015;

during that time, I personally witnessed Welborn as he stood up to fight in the interest of local business owners and employees. Welborn's eight years of experience in the House of

Representatives is of great value to all of us. I am confident Welborn will always do what is best for his constituents in southwestern Montana regardless of politics. Please join me in sup-

porting Welborn to represent us in Senate District 36.

Jim Harvey
Dillon

OBITUARIES

V. Earlene Bullock

May 26, 1944 - May 16, 2016



V. Earlene (Clouse) Shaefer Bullock left this world on May 16, 2016, to go be with her Lord and Savior Jesus Christ after a short battle with cancer.

Earlene was born on May 26, 1944, in Republic, Mo., to William Walter and Vesta Gladys (Moreland) Clouse, the fourth child and only girl in the family. She was preceded in death by her parents and brothers LaVern and Howard, and is survived by brother William Furd (JoAnna)

of Republic.

Also surviving are her children, Christopher Dean (Sandy) Shaefer of Canastota, N.Y.; Larry Bradley Bullock of Ennis; Teresa Ann (John) Jenkins of Acworth, Ga.; nine grandchildren and one great-grandchild. As well as too many friends to list who will miss her dearly.

Early always strived to be an example of strength and loyalty to her family and friends. She was always a hard worker who

had a smile for everyone and a gentle, loving heart.

Cremation has been provided by K&L Mortuary and per Early's request, no services will be held. Her ashes will be scattered where her favorite memories were made with family.

In lieu of flowers, donations can be made to Cancer Support Community Montana - 102 S. 11th Ave., Bozeman MT 597215 or Ennis Ambulance Service - P.O. Box 147, Ennis MT 59729.

Charles Edward Clark

June 30, 1922 - January 12, 2016

Memorial services for Ed Clark will be held Tuesday, May 31, at 2 p.m. from the Montana Masonic Lodge #2 Hall in Ennis.

K&L Mortuaries and Crematory of Ennis is assisting with arrangements.

Madisonian

K&L Mortuaries & Crematory, Inc.

842-5731

Continuing to build relationships and meet your funeral and cremation needs since 1964

Now Operating a Newly Installed Crematory To Meet Our Cremation Customer Needs

Pre-need Services Available

Twin Bridges ~ Ennis ~ Three Forks ~ Sheridan ~ Harrison ~ Whitehall ~ Boulder

& MORE NEWS:

A PLACE TO GATHER

Twin Bridges Senior and Community Center opens doors, celebrates

ABIGAIL DENNIS
editor@madisoniannews.com

On Tuesday May 17, 2016, around 1 p.m., cars started filling the parking lot of the new Twin Bridges Senior and Community Center for a grand opening celebration.

Madison County commissioner Ron Nye, who also serves as president for the center's board of directors, greeted all those who attended, and thanked the community for supporting the center.

"We've been working on this for eight years," Nye said. "We finally achieved our goal."

More than 60 people showed up for Nye's speech, according to Nondi Harrington, capital campaign director.

"Many more attended throughout the afternoon," Harrington said. "The need and demand for senior and community services in our area will continue to increase over the foreseeable future, with a 43 percent projected population increase of both young and old throughout Madison, Jefferson and Silver Bow counties. In order to meet these demands and needs, the senior and community center had to improve physical service capabilities, and maintain a permanent facility to offer nutritious daily meals, activities, classes, programs and community services."

The facility is 1,670 square feet and includes a vestibule, dining area, room for activities, a commercial kitchen, pantry, mechanical/janitorial room and two ADA compliant restrooms.

"This is a place (the seniors) can call home," Nye said. "They can hang out, play cards and host events. They can just visit and spend time – the sky is the limit for activities."

Clockwise from top right

PHOTOS COURTESY NONDI HARRINGTON

Cars fill the parking lot on May 17 for an open house.

From L: Marilyn Ross, Rep. Ray Shaw and Rep. Jeff Welborn attend the open house.

More than 60 community members gathered to see the new facility.



Recommendations and reasonings

Ennis Government Study Commission makes final report

CAITLIN AVEY
news@madisoniannews.com

After two years of studying the town of Ennis' governing charter, the Ennis Government Study Commission has recorded and finalized their findings and reports.

"We recommend the town of Ennis pass an ordinance requiring all appointed leaders and elected commissioners and the mayor to participate in leadership training at least once a year," the commission's final report states.

The report also says the town has funds allocated for such trainings, that should be used.

"If someone is serious about running for town government, they should be serious about getting the training," said Gayle Schabarker, who serves as the volunteer commissioner who was appointed by the local governing body.

Schabarker, who participated on the last town government study 10 years ago, was one of three members who started studying the town's charter in 2014 – Sharon Christensen and Steve Badura were both elected in 2014, with Christensen serving as the commission chair.

The commission met nearly monthly over the past two years, attended trainings, sent out surveys

and held multiple public hearings for the community. With little participation from the town, the commission held their final meeting on May 17, and will present their final report to the town commissioners at their June meeting.

"I feel we've done our due diligence to the town," said Christensen during the empty public meeting. "I feel good about the work we did and the town has a good form of government that is working well."

According to their report, the "purpose of the study commission, as defined in state law, is 'to study the existing form and powers of out town government and procedures for

delivery of local government services and compare them with other forms available under the laws of the state."

Aside from recommending a town government training ordinance, the commission expressed some concerns regarding changes made to the charter during the 1994-1996 study regarding election postings.

"It is our recommendation that the town of Ennis follow the letter of the law in regards to these issues," as stated in the final report.

Copies of the final report can be picked up at town hall or during the next town meeting on June 9.

"It's important for us to look at the charter every 10 years. Times change and so do we."

– Gayle Schabarker

STATE GOLF



CAITLIN AVEY
news@madisoniannews.com

The Ennis Mustangs represented Madison County at the state class C golf meet in Hamilton last weekend. Six golfers were up to putt in their final meet of the season, with the boys team taking 11th place.

Baylee Sculichetti placed the highest of the Mustangs as she tied for 11th place, while fellow Lady Mustang Paige Anderson took 35th overall in the girls divisions.

On the boys side, Bryson Glines lead the herd with a tie for 27th, followed by brothers Will and Charlie Gilmore who placed 42nd and 48th, respectively. Jon Fortier rounded out the team with a 67th finish over all.

BARBI HALVERSON WOOD
FOR THE MADISONIAN

From L: Charlie Gilmore, Baylee Sculichetti, Bryson Glines, Paige Anderson, Jon Fortier and Will Gilmore get ready for their trip to Hamilton for the state golf meet.

DASHING TO THE FINISH LINE

Madison County schools host elementary track and field days

ABIGAIL DENNIS
editor@madisoniannews.com

With school winding down for all Madison County students, four schools have already hosted elementary track and field days – Twin Bridges, Alder, Harrison and Ennis.

“The Harrison elementary track meet was held on Friday (May 13),” said the school’s athletic director Connie Young. “Cardwell, Willow Creek and Manhattan schools grades (kindergarten through sixth) attended.”

The event was hosted by the Harrison High School “H” Club, which is comprised of athletes who have lettered in a high school sport.

“It rained and was cold,” Young exclaimed. “The children didn’t seem to mind, they still had a great time!”

At the same time on the other side of Madison County, young Falcons raced around the track at Carroll Field in Twin Bridges.

Kindergarteners through fourth-graders participated and had a great time, according to physical education teacher Josh Keller.

“I thought the field day went great,” Keller said. “As a P.E. teacher, nothing makes me happier than to see kids giving it all and that is exactly what happened. Not only was the competition fun, but it was great to see the community support that we had during this event.”

While young Wildcats and Falcons competed in Madison County, Alder school students headed to Dillon and participated in a rural schools track meet at Beaverhead County High School – according to head teacher Teresa Murdoch, 10 other rural schools participated.

Two weeks later, Ennis elementary students hit the track – they started the day with the parade of athletes from kindergarteners through fourth-graders at 9 a.m. on May 23.



Sheridan is holding their elementary track day on May 31, beginning at 9 a.m.



Clockwise from top right

ABIGAIL DENNIS/THE MADISONIAN
An Ennis kindergartner hits his stride during the 50 meter dash.

CAITLIN AVEY/THE MADISONIAN
Twin Bridges students compete in the 200 yard dash.

PHOTO COURTESY CONNIE YOUNG
Rylan Young and Kameron Hartman enjoy the Harrison elementary track day.

ABIGAIL DENNIS/THE MADISONIAN
The high jump was a popular event during Ennis’ elementary track day on May 23.

ABIGAIL DENNIS/THE MADISONIAN
Second-grade girls from Ennis run neck in neck during the 50 meter dash.

PHOTO COURTESY CONNIE YOUNG
First grade students prepare to participate in the softball throw at the Harrison elementary track meet.





In search of bitterroots

SUBMITTED BY SALLY SCHEDEL
Sheridan Schools

Last week, the Sheridan fifth grade art class, accompanied by

classroom teacher Kathy Lane, retired fourth grade teacher Jim Lane, aide Cathie Sheldon, parents Jenn Dvorak and Stephanie Haag, and bus driver Christine

Hitchcock, went on a sketching hike in search of bitterroots.

We walked the Greer Gulch Trail at Lewis and Clark Caverns and found an abundance of

our state flower at the top of the ridge. Students sketched wildflowers and trees, learned about friendly firs and spikey spruce and extended their knowledge

of the bitterroot.

We studied this flower in our Indian Education for All unit this winter, thanks to a beautiful curriculum from the Flathead

area. Outdoors sketching is one of the best ways to know an area or resource and create original images grounded in personal experience.



Sheridan students give back

SUBMITTED BY LAURIE BARTOLETTI
Sheridan Schools

Volunteers from Sheridan School participated in Beautify Main Street! Burgers were also served to thank the community for all their support!

Lemonade! Popcorn!



CAITLIN AVEY/THE MADISONIAN

Abby Cutis, 11, and brother Zach, 13, were on Sheridan's Main Street selling lemonade and popcorn to help raise money to send themselves to summer fiddle camp. Zach has been playing the fiddle for eight years and also plays the mandolin and guitar, while Abby has been playing fiddle for four years and also dabbles on the cello.



Bartoletti finishes medical school

SUBMITTED BY LAURIE BARTOLETTI

Louie Bartoletti graduates from the University of Washington medical school this weekend, May 28. Bartoletti graduated from Sheridan High School in 2005. His family residency will be in Boise, Idaho. In addition, his wife, Jade, will be receiving her Doctorate of Nursing as a family nurse practitioner.

Come Visit
WHERE MONTANA'S HISTORY LIVES!

HISTORIC VIRGINIA CITY & NEVADA CITY

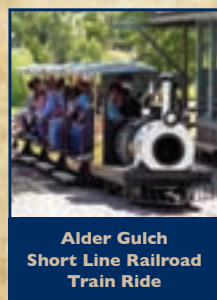


FAMILY OR GROUP DAY PASS

Good for 2 days for families of 5
 Purchase at VC Depot or NC Museum

\$99

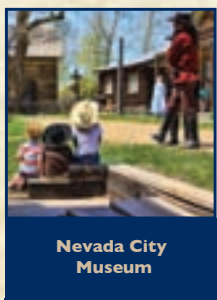
- ~ unlimited rides on the train ~
- ~ gold panning at the River of Gold ~
- ~ entry to Nevada City Museum ~
- ~ discounts at participating businesses ~



Alder Gulch Short Line Railroad Train Ride



Gold Panning at the River of Gold



Nevada City Museum

come and STAY & PLAY

\$149
 to those who have spent the night at the Fairweather Inn or Nevada City Hotel

Offer valid Non-Thurs of each week

includes

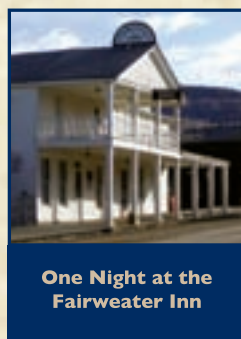
- one night / one room at the Fairweather Inn or Nevada City Hotel
- unlimited rides on the train -reservations required
- gold panning at the River of Gold
- entry to Nevada City Museum
- discounts at participating businesses

Available from Memorial Day weekend through Labor Day weekend

\$79
 for Madison County Residents, Military, State Employees & those who have stayed the night at a Montana Hotel (receipt required)



One Night at the Nevada City Hotel



One Night at the Fairweather Inn

2016 events

MAY 28

- Spring Horseback Poker Ride 800.829.2969 x1
- Summer Kick-Off Parade 800.829.2969 x1
- Nevada City Museum opens 406.843.5247
- VC Players : Opening Night 800.829.2969 x2

JUNE

- June 5 Gears for Beers 406.843.5700
- June 10-12 Irish Weekend 800.829.2969 x1
- June 17-19 Grand Victorian Ball events 406.660.1453
- June 18-19 Brothel Days 406.843.5700

JULY

- July 4 Firework Display at dusk 800.829.2969 x1
- July 15-16 Dog & Grog - MT Microbrew Fest 406.843.5700
- July 22-24 Bzn Trail Chuck Wagon Cookoff 406.660.1453
- July 25 Christmas in July at Opera House 800.829.2969 x2

A MELODRAMA PLAY
 PLUS OUR VARIED, VIGOROUS, VAGARY OF VIVACIOUS VAUDEVILLE VARIETY ACTS!

SHOW TIME Tu, W & Th 4pm
 Fri & Sat 7pm
 Sat & Sun 2pm

TICKETS Adult \$20
 College, Seniors, Military \$17
 Children 17 & under \$10
 Group discounts available

1.800.829.2969
www.virginiacityplayers.com

ALDER GULCH SUMMIT TOURS

PRESENTED BY NELSON STUDIOS LLC

Enjoy a 90+ minute ride through the heart of Montana's gold country. Learn the fascinating history behind the single largest gold strike in the Nation's history.

Enjoy live historical interpretation as you see the wonders of Alder Gulch aboard Colossus, the largest off road tour truck in Montana.

TOURS DEPARTING HOURLY
 JUNE-AUGUST EVERY DAY

CALL FOR MORE INFORMATION OR TO BOOK A RIDE! 406-546-9787
WWW.NELSONOFFROAD.COM

BREWERY FOLLIES

NONSENSE AND PARODY
 HILARIOUS COMEDY CABARET
 H.S. GILBERT BREWERY

SHOWTIMES 4 PM & 8 PM
CALL FOR RESERVATIONS
 800-829-2969 EXT 3 TICKETS \$20



f MONTANA HERITAGE COMMISSION
 Like us on Facebook and receive 1 free train ride!!
 (one free ride per family or group of 5)

2016 SUMMER KICK OFF PARADE!

with special guests

SATURDAY, MAY 28 1:30 PM

Everyone is invited to participate in this parade.

Motorized vehicles are welcome as well as non-motorized, horses and walkers. Please contact Holly Driskill (**need to get her phone!**) at to sign up!

Come have fun and help us kick off the summer! Line up will begin at 12:30pm. There is no fee required to enter, but the parade is limited to 50 entries plus individual walkers/riders. For more information, you may email the Chamber at info@virginiacity.com

Congratulations to the Appointments of the following MHC Commissioners:

- Marilyn Ross (Twin Bridges, MT)
- Philip Maechling (Florence, MT)
- Shera Konen (Ennis, MT)
- Stan Ozark (Glasgow, MT)

"HONORARY MEMBERS" OF THE "FRIENDS OF VIRGINIA CITY:

ROBERT ERDALL

Robert ErdallNatur sa nisit ex excepted eiciunte valoris niendia cust, ut que quiaspe re net unt as dolupta debiliam eseribus, sapiet, ute optae voluptas es utentem. Nempere omnihillam asi doluptaquam quo beraese quisimet, nullorem conecuptat harum aribust, conet, omnietur, torehenim ate cumquidipsa doluptur mi, ut el et quam incia consequate solupta pra nes mosa sequiat iorepel iumquodior mosapernam, omnihil min es et harum untoribus, nos mos repe exces adigent iumquo eiciationum nemodit fugitiam etur?

Ecusdae dolorem sam quae. Et eum que voluptaturem vollit velestrum adisim elit occusam int essunt ratur, consed ullaccu metur, a consequae. Doluptasitam quunt earum quo optatem labo. Nequamet a eium vent, ipis arumque eumquiam qui ut omnimagnit que paris ut la doluptata sinum quae cone esti voluptaes eatusam, te dolor aut que niate placcuptat.

Cat dis am ex est a des a doluptae nulluptur, id que nosantotam iurepere niminullatas eatatemquia quis eatia est, conet fuga. Ecepel ipsum non con etus ut et incias doluptas doluptur?

Vid que omnihil labores accum debitibus.

Ferorem poreste debit aut hilibus.

Nonsequi sum accuptat valoris autecum ni sum aut aut veritiant.

JOHN HAMILTON

John Hamilton moved to Virginia City in 1960 and began working on local ranches and taking part time work where he could find it. One of the jobs available that he often worked at was for Charlie Bovey, doing carpentry work, and general labor. He worked with "Big Joe" doing construction and repair work in Virginia City and Nevada City on many of the buildings Mr. Bovey purchased and was restoring. After working in the area for a while, and establishing himself he moved his father and mother into town. In the tourist season his father Chet, and mother Elizabeth also worked for the Bovey's. In 1967 John married Linda Glasser from Sheridan. John and Linda raised their two boys in Virginia City. Over the years John has run the VC Campground, owned and operated an ice cream shop, a bed and breakfast, as well as volunteered on several boards including the VC Vigilance Club of which he has been an active member for 20+ years. John and Linda became concessionaires in the early 2000's managing the Fairweather Inn, and the Nevada City Hotel & Cabins. John has become an accomplished carpenter, and woodworker, and truly loves his work. He is now mentoring the fourth generation of Hamilton's to work in the tourism trade.

3RD ANNUAL BREW AND SPIRIT FESTIVAL



ABIGAIL DENNIS/THE MADISONIAN

Attendees at the third annual Tap into Ennis brew and spirit festival on May 21 braved gusty winds and intermittent storms to enjoy the festival.

Red Hat ladies of Ennis get a surprise at monthly meeting

SUBMITTED BY JACKIE SMITH
Red Hat Society

The Fan Mountain Chapter of the Red Hat Society meets at the Ennis Senior and Community Center – this month, they were surprised by two volunteers, John Heckler and Jim Kramer, who dressed in fancy tuxedos to wait the tables. What fun it was and both looked very handsome.

The Fan Mountain Chapter of the Red Hat Society began in Ennis in 2003. It was started by Marjorie Stephens, and had about 12 ladies to begin with. Stephens moved to Colorado to be near her family and Jackie Smith was named to continue the group. We have 12 – 25 ladies, depending on the season, who meet the second Thursday of the month for lunch and conversation.



Every new Ford in stock is priced at invoice - and YOU keep the rebates!!



Ask about our new Perma Guard program - Get up to \$1,287 additional trade allowance at the time of trade-in

DENNY MENHOLT

FORD

50 Ford Ln, Butte, MT 59701

The Right Price,
The First Time, Every Time!



THE WORKS

FUEL SAVER PACKAGE

Service Dept open on Saturdays

We Service all Makes and models

SAVE \$10

\$29.95 w/ mail in rebate

- Motorcraft® Premium Synthetic Blend Oil and filter change
- Rotate and inspect four tires
- Check air and cabin air filters
- Inspect brake system
- Test battery
- Check belts and hoses
- Top off all fluids

Retail purchases only. Up to five quarts of Motorcraft® oil and Motorcraft filter. Taxes, diesel vehicles and disposal fees extra. Hybrid battery test excluded. See Service Advisor for rebate form, vehicle exclusions and details. Offer valid with coupon. Expires 2/28/15

MULTI-POINT INSPECTION

HAVE QUICK LANE CERTIFIED TRAINED TECHNICIANS CHECK YOUR TIRES, BRAKES, TRANSMISSION, STEERING AND MORE AS PART OF THIS COMPREHENSIVE 39-POINT INSPECTION. IT'S THE SMART WAY TO KEEP YOUR VEHICLE OPERATING AT PEAK EFFICIENCY. **IT'S FREE!**

Local: (406) 494-6333 • Toll Free: (888) 594-2417 • www.dennymenholtford.com

FIELD TRIP



SUBMITTED BY JAMIE JANOSKO, ALDER SCHOOLS

On May 17, the Alder School went on a fun and educational field trip to the Ennis National Fish Hatchery and Imerys Talc/Yellowstone Mine. On our visits, students enjoyed learning about life cycles of fish, looking for and classifying minerals and learning about the many uses of talc.

High Country Irrigation, Landscaping and Nursery

2258 Hwy 287, Alder • 842-5543 • Licensed & Insured



**This Memorial Day Weekend
OPEN EXTENDED HOURS
SATURDAY AND SUNDAY
FROM 10-3**

Check out our beautiful hanging baskets, Herbs, Veggies, perennials, trees and shrubs!



Come see us for your Memorial Day Needs!

Check us out on

www.highcountryirrigation.com



BERKSHIRE HATHAWAY HomeServices Montana Properties



WILLIAMS ST, ENNIS
\$445,000 | #2113308 | NEW LISTING

Reconstructed historic home and cottage, 1bed/1bath and 2bed/1bath. Mature landscaping, in town location with great views of Madison Range. Pergola car port, breezeway.

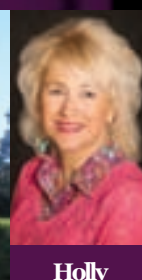


Tim Beardsley
SALES PROFESSIONAL
581-7056



E POPPLETON, SHERIDAN
\$350,000 | #211220 | HISTORIC HOME

The historic O'Brien house is on the Historical Registry. 2 bedroom/2 bath home with 1,670± sq. feet. Wonderful bed and breakfast opportunity. Includes a tool shed, detached two car garage with a one bedroom apartment for potential income.



Holly Driskill
SALES PROFESSIONAL
451-3527



SOUTH HWY 287, SHERIDAN
\$329,900 | #211705 | NEW LISTING

50+/- sub-irrigated acres w/ attributes to endear the fisherman, hunters, birdwatchers & outdoor enthusiast w/ stands of cottonwoods, a pond, live water, water rights & borders a conservation easement



Jack Leber
SALES PROFESSIONAL
596-7893



MADISON AVENUE, ENNIS
\$239,900 | #211259 | NEW LISTING

NEW CONSTRUCTION! 2 bedrooms w/2 full baths, office nook, dining area w/slider onto back patio & builder plans on putting in underground sprinklers & a sod yard. Walking distance to town. A MUST SEE!



Melinda Merrill
BROKER
596-4288



308 N BRIDGE, TWIN BRIDGES
\$149,000 | #211898 | NEW LISTING

3bd, 2ba that was well maintained & updated over the years, new flooring & windows, well insulated, nice mudroom, fenced in yard & an insulated 2 car garage w/ a concrete floor & large overhead door.



Michelle VanDyke
BROKER
596-0805



INDIAN RIDGE SUBDIVISION, ENNIS
\$250,000 | #212416 | NEW LISTING

This property is located just west of the golf course and minutes to town. Road is paved to lot. Great views of Madison Range and close to Madison River. Priced to sell!



Rilki Dilschneider
BROKER
581-5155

BHHSMT.COM

ENNIS: 406.682.5002 | SHERIDAN: 406.842.5650 | TWIN BRIDGES: 406.684.5686

© 2015 BHH Affiliates, LLC. An independently owned and operated franchise of BHH Affiliates, LLC. Berkshire Hathaway HomeServices and the Berkshire Hathaway HomeServices symbol are registered service marks of HomeServices of America, Inc. Equal Housing Opportunity.

DIVISIONAL TRACK



Madison County athletes battle it out in Missoula

CAITLIN AVEY
news@madisoniannews.com

Even the rain could not stop Madison County's track and field athletes from bringing their best to the track. With multiple individual and team placements, Madison County students will advance to the state meet, May 27-28 in Missoula.

RESULTS

Boys

100 meter dash
Second place: Cleet Wrzesinski, Ennis, 11.35
Third place: Bill Yeager, Twin Bridges, 11.36
Fifth place: Corbin Wood, Ennis, 11.59
Eighth place: Tanner Wood, Ennis, 11.80

200 meter dash
First place: Cleet Wrzesinski, Ennis, 22.32
Second place: Bill Yeager, Twin Bridges, 22.53
Sixth place: Tanner Wood, Ennis, 23.49
Ninth place: Wade Luly, Ennis, 24.22

400 meter dash
First place: Bill Yeager, Twin Bridges, 50.25
Fifth place: Wade Luly, Ennis, 52.98
11th place: Monty Tipps, Twin Bridges, 55.84

800 meter run
10th place: James Bendon, Twin Bridges, 2:14.68
12th place: Race Owens, Ennis, 2:15.20
13th place: Dillon Williams, Ennis, 2:16.89

1600 meter run
Seventh place: Riain Deavel, Sheridan, 4:57.89
Eighth place: Dillon Williams, Ennis, 5:03.61
Ninth place: James Bendon, Twin Bridges, 5:09.71

3200 meter run
Fourth place: Riain Deavel, Sheridan, 10:53.84
Eighth place: Tyler Haag, Sheridan, 11:37.11
10th place: Garrett Wentzel, Twin Bridges, 11:48.27
15th place: Ethan Orrin, Twin Bridges, 12:09.92

110 meter hurdles
First place: Cleet Wrzesinski, Ennis, 15.10

300 meter hurdles
First place: Cleet Wrzesinski, Ennis, 40.08
14th place: Ethan Kneeland, Twin Bridges, 47.69

4x100 relay
First place: Ennis, 43.32 -

Corbin Wood, Tanner Wood, Austin Baum, Cleet Wrzesinski
Fifth place: Twin Bridges, 46.72 - Kaleb Rosselot, Logan Jones, Cooper Christensen, Bill Yeager

4x400 relay
Second place: Twin Bridges, 3:38.26 - Kaleb Rosselot, James Bendon, Monty Tipps, Bill Yeager
Sixth place: Ennis, 3:43.13 - Wade Luly, Austin Baum, Dillon Williams, Race Owens
15th place: Harrison, 4:12.98 - Chas Buus, Lane Buus, Doug Christensen, Jurgen Haenke
16th place: Sheridan, 4:23.31 - Moxon Lee, Issac Bendon, Tyler Haag, Riain Deavel

Shot put
First place: Ty Morgan, Ennis, 47-06.25
Fifth place: Cooper Christensen, Twin Bridges, 42-05.00
13th place: Zane Bowey, Sheridan, 36-09.50
17th place: Dustin Wham, Ennis, 34-03.50

Javelin
Seventh place: Cooper Christensen, Twin Bridges, 139-11
Eighth place: Kaleb Rosselot, Twin Bridges, 132-02
12th place: Steve Smathers, Twin Bridges, 126-02
15th place: Ethan Kneeland, Twin Bridges, 117-00

High jump
Fourth place: Corbin Wood, Ennis, 6-00.00
Fifth place: Kaleb Bausch, Twin Bridges, 5-10.00

Pole Vault
Sixth place: Moxon Lee, Sheridan, 10-00.00
Eighth place: Bryce Williams, Ennis, 9-00.00

Long jump
Second place: Tanner Wood, Ennis, 20-05.50
Third place: Corbin Wood, Ennis, 20-03.00
Eighth place: Lane Buus, Harrison, 19-03.00
16th place: Kaleb Bausch, Twin Bridges, 17-09.50

Triple jump
Fourth place: Tanner Wood, Ennis, 41-06.25
Eighth place: Lane Buus, Harrison, 39-02.00
11th place: Kaleb Bausch, Twin Bridges, 37-10.50
16th place: James Bendon, Twin Bridges, 36-00.25

Girls

100 meter dash
Second place: Wrenzi Wrzesinski, Ennis, 13.11

200 meter dash
Third place: Wrenzi Wrzesinski, Ennis, 26.95
Sixth place: Kailee Oliverson, Twin Bridges, 27.49

400 meter dash
Seventh place: Kailee Oliverson, Twin Bridges, 1:02.87
10th place: Josie Jenkins, Ennis, 1:04.10

800 meter run
Seventh place: Jessica George, Twin Bridges, 2:32.61
Ninth place: Savanna Stewart, Twin Bridges, 2:36.12
11th place: Josie Jenkins, Ennis, 2:36.93
14th place: Josie Hokanson, Harrison, 2:49.08

1600 meter run
Seventh place: Savanna Stewart, Twin Bridges, 5:44.87

100 meter hurdles
First place: Wrenzi Wrzesinski, Ennis, 15.78
Third place: Kailee Oliverson, Twin Bridges, 15.89
Fourth place: Taya DeFrance, Harrison, 16.30

300 meter hurdles
First place: Wrenzi Wrzesinski, Ennis, 45.96
Third place: Taya DeFrance, Harrison, 48.06
14th place: Mara Johnson, Twin Bridges, 54.57



CAITLIN AVEY/THE MADISONIAN
Top: Madison County athletes traveled to Missoula on May 20-21 for the class C divisional track meet.

CAITLIN AVEY/THE MADISONIAN
Left: Sheridan's Cynthia Dominguez looks to get ahead of Ennis' Danika Philippott during the the 100 meter dash.



CAITLIN AVEY/THE MADISONIAN
Below: Ethan Orrin of Twin Bridges attempts to clear the high jump bar.



CAITLIN AVEY/THE MADISONIAN
Right: Taya DeFrance of Harrison leaps over a hurdle during the 100 meter trials.

CONTINUED ON PAGE B 10



WANTED

Volunteers wanting to help preserve and promote Montana's Heritage in historic Virginia and Nevada City. Help needed in preservation, artifact restoration and living history.

Montana Heritage Commission | PO Box 338 | Virginia City, MT 59755
www.virginiacitymt.com



HEALTH & WELLNESS

Alcohol and drug abuse issues

BY JULIE ANDERSON
Addiction Counselor and
Prevention Specialist with
the Southwest Chemical
Dependency Program in
cooperation with the Madison
County Mental Health Local
Advisory Council

The misuse and abuse of
alcohol, over-the-counter
medications, illicit drugs

and tobacco affect the health
and well-being of millions of
Americans each year. Alcohol
and drug abuse is defined as a
pattern of drinking and using
drugs that results in harm to
a person's health, well-being,
relationships and productiv-
ity. In 2014, an estimated
22.5 million Americans aged
12 and older self-reported
needing treatment for alcohol

or illicit drug use. These
disorders are among the top
conditions that cause disabili-
ty and carry a high burden of
disease in the United States,
resulting in significant costs
to families, employers and
publicly funded health sys-
tems. According to the latest
drug information from the
National Institute on Drug
Abuse, alcohol and drug
abuse costs the United States
over \$600 billion annually
in health care treatments,
lost productivity and crime.
Every year, illicit and pre-
scription drugs and alcohol
contribute to the death of
more than 90,000 Americans,
while tobacco is linked to an
estimated 480,000 deaths per
year. Although a person who
abuses drugs or alcohol is not
necessarily an addict, abuse
has been known to lead to
physical and psychological
dependence.

Most signs of addiction
are fairly universal:

- The onset of with-
drawal symptoms after the
person suddenly stops using
the substance
- Feeling as though
one must consume the
substance to deal with the
stresses of daily life
- Increased tolerance



levels requiring the person to
consume more of the sub-
stance

- Uncharacteristic or
irrational behavior such as
angry or violent outbursts
- Dramatic changes in
appearance like weight loss,
hair loss, or skin problems
- Loss of interest in
previously enjoyable activities
- Loss of important
relationships
- Lying to cover up
consumption patterns
- Impaired perfor-
mance at work, home or
school
- Incessantly borrow-
ing money or stealing money
- Legal, medical or
personal problems associated

with consumption of sub-
stance

Studies have shown an
association between consum-
ing alcohol and drugs for the
first time at an early age, and
abuse and dependency later
in life. In fact, among ado-
lescents, the transition from
initiation to regular use of
alcohol, marijuana and other
drugs often occurs within
three years. A recent report
by the Substance Abuse
and Mental Health Services
Administration found that
74 percent of adults partici-
pating in a substance abuse
treatment programs had
initiated alcohol or drug use
before the age of 17; those
who began at a very young
age (11 years old or younger)
were more likely to have mul-
tiple substance dependencies.
These findings highlight the
need for continued age-sen-
sitive efforts to prevent and
delay substance use initia-
tion, especially for marijuana
and alcohol, not only among
adolescents aged 12 to 17 but
also among children aged 11
or younger. Substance use can
interfere with health and aca-
demic performance and can

negatively affect relationships
with friends and family. Talk-
ing with young people early
and often about the dangers
of underage drinking and
other substance usage can
help. Youth need to under-
stand and feel confident that
they do not have to rely on il-
legal substances to fit in, have
fun or deal with the pressures
of growing up.

For anyone battling an
addiction there is hope for
recovery, and the belief that
these challenges and condi-
tions can be overcome is the
foundation. The process of
recovery is highly personal
and occurs via many path-
ways. It may include clinical
treatment, medications,
faith-based approaches, peer
support, family support, self-
care, and other approaches.
Recovery is characterized
by continual growth and
improvement in one's health
and wellness, though setbacks
may occur. Because setbacks
are a natural part of life, resil-
ience becomes a key compo-
nent of recovery.

Many people struggling
with addiction find the big-
gest and toughest step toward
recovery is the very first one:
deciding to make a change.
An effective treatment plan
for drug or alcohol depen-
dence involves both physical
and psychological treatment
methods. Successful pro-
grams offer individualized
treatment that looks at the
background and addic-
tive behavior of the patient
before creation of a custom-
ized approach to battling the
addiction. Every individual
in a recovery program is
different; each has his or her
reasons for the drug, alco-
hol or behavioral addiction,
along with individual reasons
for seeking to end the ad-
diction. Whatever treatment
approach you choose, having
a solid support system is
essential. Recovering from
addiction isn't easy, but with
people you can turn to for
encouragement, guidance,
and a listening ear, it's pos-
sible.

For more information re-
garding substance abuse, ad-
diction and recovery, please
contact the Madison County
Public Health Department or
a local support group in your
community; or, visit SAMH-
SA and the National Institute
on Alcohol Abuse and Alco-
holism (NIAAA) online.

* Primary sources of data
for this article: SAMHSA and
the United States Centers for
Disease Control and Preven-
tion.

Independent, Authorized Agent for
**BlueCross BlueShield
of Montana**
"An Independent Licensee of the Blue Cross and Blue Shield Association"

JACK W DAUGHERTY
INSURANCE
& Financial Services, LLC.
201 E. Main, Ennis 406-682-4002
www.jackdaughertyinsurance.com

Ruby Valley
**Insurance
Services**
406-842-7400

MAC'S CHC PHARMACY
(406) 842-7434
317 Madison ST. Sheridan, MT
Monday-Friday 9 AM - 5:30 PM

★★★★★

We are a 5-STAR* Pharmacy ready to help you
manage your medications for better health.

Mac's CHC Pharmacy
Helping your whole family healthy

*STAR measures are the medications use measures
in the 2016 CMS STAR Ratings Program for
Medicare Advantage Plans that include drug benefits
5 STAR ratings on 3 out of 4 measures

SERVING
SOUTHWEST
MONTANA

Pinnacle Therapy
Counseling Services LCPC, NCC
(406) 404-9053
Children • Adolescent • Family Therapy • Crisis Support
Medicaid Provider

MADISON VALLEY MEDICAL CENTER
LIVE WELL. **Health Fair 2016**

Annual Health Fair
June 9-15, 2016

HEEL CUP BONE DENSITY SCREENING.....\$5
A1CScreening.....\$10
AORTASCREENING.....\$30
COLON SCREENING.....\$10
CAROTID ARTERY SCREENING.....\$40
COMPREHENSIVE CHEMISTRY:
COMPLETE BLOOD COUNT, TSH, LIPID PANEL.....\$60
ABI TESTING FOR PERIPHERAL ARTERY DISEASE.....\$30
BLOOD PRESSURE CHECK.....FREE

Participants are encouraged to come fasting (10-12 hr)
Making appointments for 7-10 am

Call 682-6842
Healthcare with Heart

2016 Health Fair Event at MVMC
from 4-7 pm on June 16, 2016

Free Food courtesy of MVMC Auxiliary and Ennis Lions Club | Spur'n Healthy Habits
(roping and other activities) | Educational and Informational Vendor Displays
Learn more about mammograms
Bike Rodeo for kids (4 pm - 6pm), sponsored by Madison Byways

305 N. Main, Ennis, MT
www.mvmedcenter.org

**MADISON VALLEY
MEDICAL CENTER**

**Ruby Valley Hospital
Physical Therapy Team**

Customized treatment plans to
restore functional mobility
specific to your lifestyle

Neck Pain/Headaches Muscle & Joint Pain
Back Pain Sports Injury
Falls/Decreased Balance
Post-Surgical Rehabilitation
Self-Care/Home Safety

Jamy Kraai, MPT Jessi Muniz, DPT
Jana Butler, PT Cindy Crismore
Office Manager

Appointments available
Monday - Friday, 8am - 5pm
Call (406) 842-5081 for more information
www.RubyValleyHospital.com
The Ruby Valley Hospital is an equal opportunity provider

**EYES
ON MAIN**
VISION SOURCE

Exams
Glasses
Contacts

Ennis: Thursday by appointment
Bozeman: Monday through Friday
9am to 6:30pm

Dr. Jeff Squire
406-577-2380
222 E. Main St #1C, Ennis, MT

We appreciate your patronage and will work hard
to maintain your trust.



COLUMNS



This, OUR VALLEY:

By Reverend Keith Axberg

The Color of your apron

Give a boy a horse, he'll ride for a day; teach a boy to horse around, he'll have friends for life – An old proverb I just made up.

My wife and I were at a megastore one day for a bit of shopping. There was one small item we needed, but

weren't quite sure where to find it, so we located a Customer Service Representative (CSR) to help us. You could tell she worked there by the



Rev. Keith Axberg

apron she wore.

I asked her where I might find what we were looking for. She scrunched her eyes together for a moment and concluded it was a good question.

She seemed equally baffled by what it was exactly we were looking for, so we gave her the name of the product, the brand and added the "as seen on T.V." prompt the advertisement on television had used to direct us here to this establishment in the first place.

At that point her eyes widened a bit in near-recognition of what we were seeking, then went back into a deep-dive scrunch before concluding, as before, that it was a good question for which she had no answer.

Good soldier that she was, though, she stood her post and did not move. She suggested we try a spot in the exact opposite corner of the store from which she was located, and wished us well on our journey.

We departed for the far reaches of Wally's World (name changed to protect the identity of the store; any similarities to establishments real or imagined is purely coincidental), but never did we find the gizmo that would have made our lives much more meaningful and complete. Sigh.

That's quite different from what I experience when visiting a local establishment where I'm able to find true and genuine value in the world of, oh, let's say "hardware" just for the sake of the story.

Whenever I drop in like "Tim 'the Tool Man' Taylor," I am greeted by black-shirted CSRs who know me both by sight and (often) by name.

Knowing the skills and expertise with which I carry

out life as a human being on planet earth, they immediately go into full blown blue-light-special-compassion mode and enquire as to how they might help me.

I generally assure them that all sorts of specialists and professionals have been trying to find the answer to that question for a number of years now, and yet the CSRs insist that this time things might just be different.

Having filled me with a sense of hope, I will confess what it is I'm looking for, and they will walk with me, and together we will look for what it is I seek. Not only that, but they will answer questions I have regarding the project I'm working on, and if that particular CSR doesn't have the answer, they will find an in-house specialist who will pick up where they left off. That's true customer service.

The best thing about that store is that being helpful seems to be a part of their culture. It doesn't appear to be an affect or something they're regurgitating out of a training manual or online course. When you pop into the store, they're glad to see you and they want to help you find what you're looking for.

Whether at home or out and about, I think it is important to be of service – to be ready to help. I think it is important to see a person – not a customer; to see a person and not a purse.

That's something Jesus taught. "I came ... to serve" and his followers suggest we "have this (same) attitude in us."

He's given each of us an invisible apron, and any way you slice it, we are Christ's Service Representative; we are expected to actively seek the face of Christ in everyone we meet.

Every person is walking around with a list of needs tucked away in a pocket, and as God's CSRs, we have the privilege of asking them, "May I help?"

In time, we might even discover with joy that we've not been called to stand guard over some spot in some aisle, but to join hands with those who seek, and scratch items off our lists together as we journey with them here in this, our valley.

Keith Axberg writes on matters concerning life and faith. He can be reached at kfaxberg@gmail.com.

NATURAL Resource News

By Trisha Cracraft
Natural Resources & Conservation Service

CONSERVATION PLANTING 101

Do your animals need wind protection? Do you want to save money by reducing your energy consumption? Do you want to reduce noise, create a visual barrier or establish wildlife habitat? There are many

conservation benefits to planting a windbreak, shelterbelt or getting trees and shrubs established.

A few things to think about before you order trees. What do you want to accomplish with your

planting? What is the existing vegetation like where you want to plant? Is there perennial vegetation that will compete with the seedlings? Is there going to be grazing pressure from livestock or wildlife? Do you have browse protection or the area fenced off? Is it feasible to water the trees in the event of a dry spring or long hot summer? It is often difficult to get a good survival rate on tree shrub establishment. It is in your best interest to take every measure possible to give them the best opportunity for survival.

The Division of Natural Resource and Conservation has teamed up with Montana State University Extension Service, Natural

Resources Conservation Service and local Conservation Districts to offer low cost seedlings (bare root and containerized) to be used in conservation plantings.

Not sure what to plant? No problem, the DNR's website has lots of information on what trees are suitable for different issues, how to plant and care for your seedlings and available inventory. Visit their website at <http://dnrc.mt.gov/forestry/Nursery/> call 542-4244 or email mtnursery@mt.gov for current information. NRCS, MSU extensions and your local CDs are also available to help you develop a plan to meet your needs.

The June highlights for the Montana night sky are three naked eye planets shining brightly in the evening sky. In the morning sky, Mercury becomes briefly visible shortly before sunrise through the first three weeks of the month.

As June begins and darkness falls, the giant planet Jupiter shines brightly in the southwestern sky. Above Jupiter are the stars of the constellation Leo, the lion, which look much fainter in comparison to brilliant Jupiter. Jupiter sets about 2:30 a.m. as the month begins and about 12:30 a.m. as the month comes to a close. In the eastern sky as darkness falls, look for orange colored Mars, which is almost as bright as Jupiter as the month begins. To the left of Mars is the ringed planet Saturn with its golden hue. Throughout the month, these two planets form an impressive grouping with the stars of the constellation Scorpius including its brightest star, reddish colored Antares. As the month progresses and the distance between Mars and Saturn and Scorpius increases, look for Mars to become noticeably less bright as it speeds away from Earth after its closest approach to our planet in 11 years, which occurred on May 22. Mars sets around an hour before sunrise as the month begins and about three hours before sunrise as the month comes to a close. Saturn doesn't set until after sunrise as June begins and almost two hours before sunrise as the month comes to a close. Briefly visible toward dawn is the innermost planet, Mercury, which may be seen very low in the eastern sky during the first three weeks of June. Mercury will be easiest to see about the middle of the month as it continues to brighten and it appears further from the Sun.

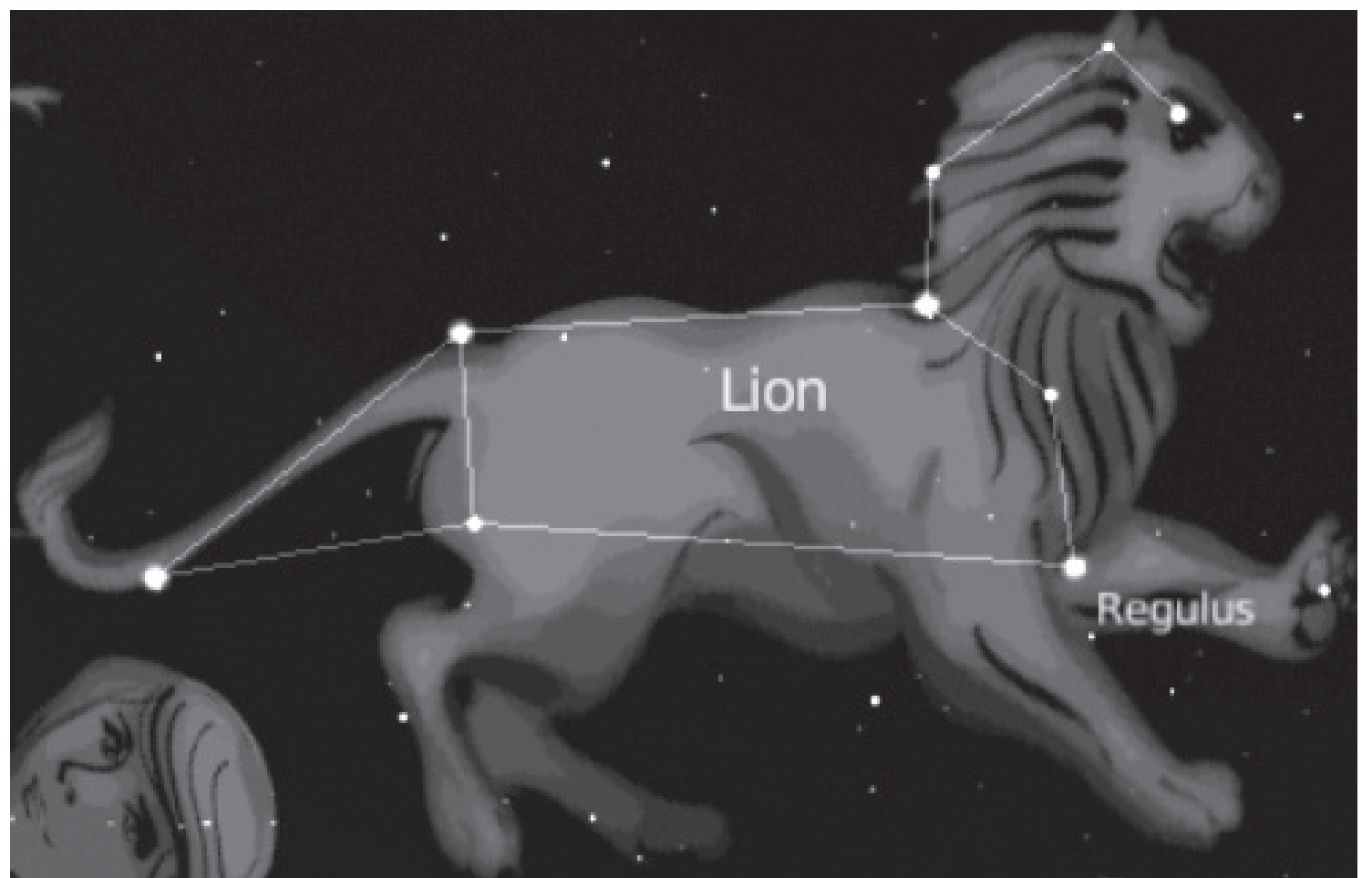
Look for a very thin crescent moon just below a very faint Mercury low in the eastern sky about a half hour before sunrise on June 3. On June 11, the moon is to the left of Jupiter. On June 14, the moon is located above Spica, the brightest star in the constellation Virgo. On June 16, look for the moon above Mars. The following evening, the moon is about equally spaced between Mars and Saturn. Then on June 18, the moon is positioned to the left and above Saturn. The moon is full on June 20.

For meteor shower watchers, there are no significant meteor showers this month. Even so, a sporadic meteor can flash across the sky at any time. From a dark site, meteors typically can be seen at a rate of about five meteors per hour.

The Sun arrives at the summer solstice at 4:34 p.m. on June 20, the longest day of the year, when summer begins in the Northern Hemisphere.

MONTANA NIGHT SKIES

By Richard Stouffer*



Commodity Insite! An old saw, an old song and fears running rampant

by Jerry Welch

One of the oldest sayings on Wall Street is, "sell in May and walk away." An old hit song from 1966 made popular by Frank Sinatra is, "That's Life." Mix that old saying with that old song and the obvious fact that fears are running amok with every market, stocks, bonds, currencies and commodities and what investors, traders and agricultural producers are facing is great uncertainty.

From CNBC entitled, "Signs of fear are running rampant through the market." The first line of the piece states the following: "The signs of market fear are everywhere, from deep-pocketed hedge funders on Wall Street to mom-and-pop investors in flyover country." And the second line, though referring to stock market investors, can also be applied to commodity producers and traders. Here is that line: "A year after the

market reached record highs and it looked like there was nothing that could stop what has become the second-longest bull market in history, market participants are pulling money off the table and heading for cover."

First, some background about stocks and commodities. Stocks began the year with the worst start in history but carved out the last meaningful low on Feb. 11, at 15,400, and posted a high on April 21 at 18,080. Commodities as measured by the CRB Index fell to a 13 year low but carved out the last meaningful low on Feb. 9 at 155.01, and peaked on May 11 at 185.31. Both markets bottomed within two days of each other while the Dow eventually hit an eight month high while the CRB Index hit a six and one-half month high.

Commodities have enjoyed a

spectacular bull move since early February with gold off to its best start in 30 years while crude oil prices (bottomed on Feb. 11) have since improved by more than 70 percent. Other markets such as soybeans and soy meal have rallied more than 40 percent in the past few months. Sugar prices are nearing a two year high. And the rise with the CRB Index and most other hard assets was accomplished mostly in April.

Over the years whenever I notice that commodities in general are doing exceptionally well in April, it brings to mind that old song, "That's Life." The following are the lyrics to the opening lines: "That's life, that's what people say. You're riding high in April, shot down in May."

Here are a few observations regarding several markets that were riding high in April but now strugg-

ling in May. On Thursday of this week, the Dow ended at a new one and one-half month low but caught a bid on Friday to end modestly on the plus. Copper ended the week at a four month low. As a leading indicator for stocks and commodities and dubbed Dr. Copper for being so "smart," the weakness unfolding should be noted. Gold, the darling of the bulls, closed today at a one month low. Silver this month alone has dropped 20 percent, off a whopping \$1.65 an ounce. A rule of thumb for any market is a decline of 20 percent or more suggests the trend is now that of a bear.

The CNBC article mentioned above highlighted the fact that the hedge funds have sliced their exposure on the long side of stocks to the lowest level in four years. The article said, "money is draining again

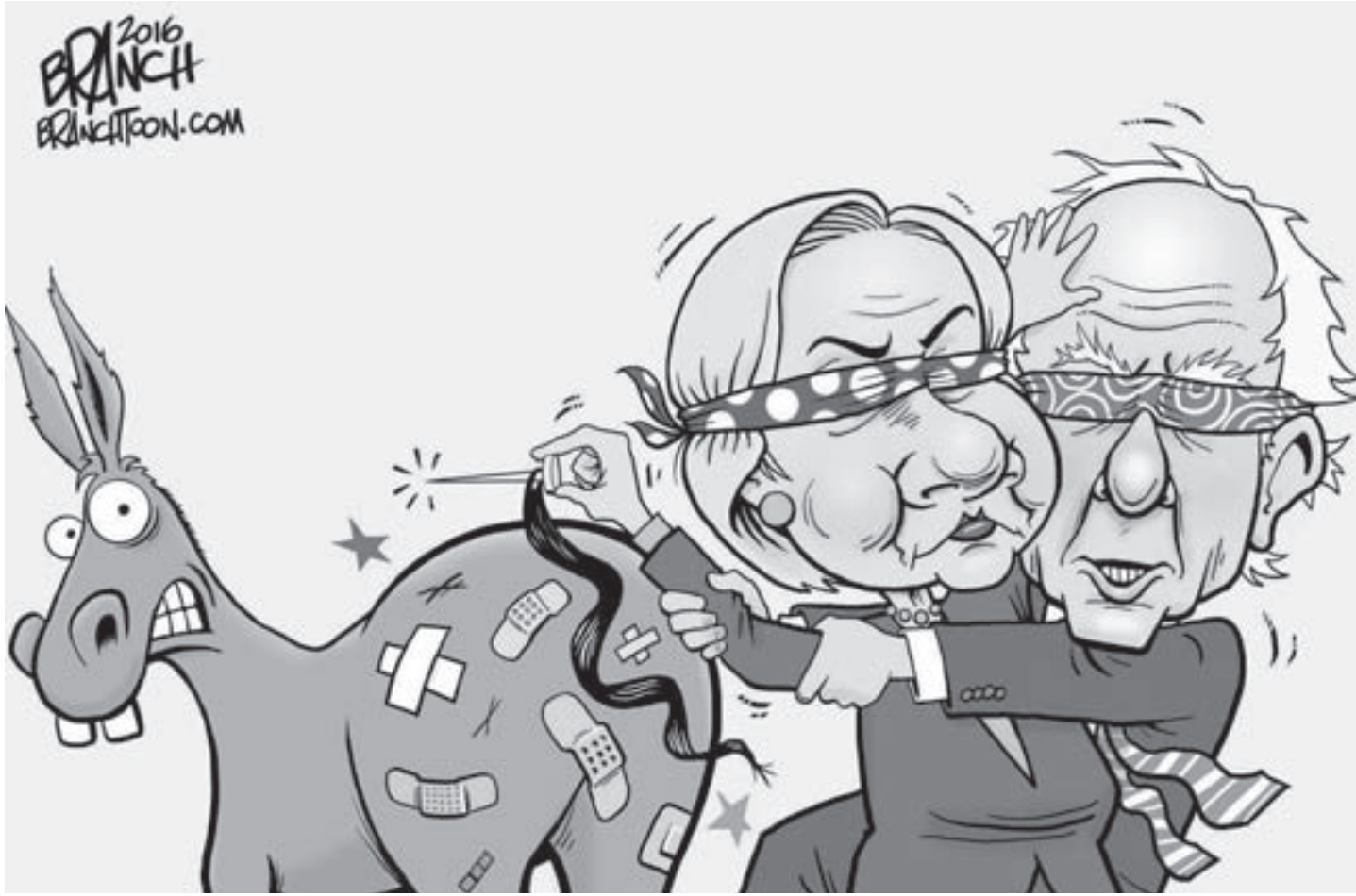
from equity funds after a period of reversal." But the following quote is the real eye opener: "The outflows come at a time when the retail crowd is feeling the heat as well. Bullish sentiment dropped to 19.3 percent in this week's American Association of Individual Investors survey, its lowest level since mid-February and only the ninth time since 1990 that optimism fell below the 20 percent mark." Investors are exiting the stock market in droves, which is flat bearish.

The Dow Jones posted a high in April as it was riding high. Commodities posted a high in May and continue to hold up well and only this week have started showing signs of wear and tear. When the Dow or any other stock index begins to display weakness in May, it is not unusual for that scenario to continue

into the fall. When commodities are riding high in April, it is not unusual values to be shot down in May. And because stocks and commodities have been moving in near lockstep since Feb. 9 and 11, if one market is in trouble, the odds are high the other one will be sooner than later.

Of course, it is possible that stocks and commodities shrug off that old Wall Street saying and move higher. It is also quite possible the big bull move in April for commodities does not get "shot down in May" as that old tune suggests. But with the sudden surge of fear that is running amok for all markets, I would shy from the long side of long side of the ledger regardless of the market. An old saw, an old song and fears running rampant has me spooked. And I do not spook easily.

COMICS & PUZZLES



Editor's Note: Any editorial cartoons printed in our paper do not reflect the opinion of the staff of The Madisonian.

King Crossword

ACROSS

- 1 Speed-of-sound number
- 5 Away from NNE
- 8 Differently
- 12 Jai follower
- 13 Island garland
- 14 Cambodia neighbor
- 15 Price reduction
- 17 African herd
- 18 Goes in
- 19 Old foundation garment
- 21 "Gee, ya think?"
- 22 Goblet feature
- 23 Young Lincoln
- 26 "Family Guy" daughter
- 28 Burn with steam
- 31 "Go away!"
- 33 Fix the soundtrack
- 35 Sandwich cookie
- 36 Chess soldiers
- 38 Periodical, for short
- 40 Barbie's companion
- 41 Approach
- 43 Dinner for Dobbin
- 45 Plot
- 47 Rhododen-

1	2	3	4		5	6	7		8	9	10	11
12					13				14			
15				16					17			
18								19	20			
			21					22				
23	24	25		26		27		28			29	30
31			32		33		34		35			
36				37		38		39		40		
			41			42		43		44		
45	46							47		48	49	50
51						52	53					
54						55				56		
57						58				59		

- 51 "Hi, sailor!"
- 52 Native country
- 54 Part of GSN
- 55 Coach Parseghian
- 56 Small combo newspaper pg.
- 58 Small shots
- 59 Tosses in
- 20 "Monty Python" intro
- 23 Recipe meas.
- 24 "Eureka!"
- 25 Quaint and unpretentious
- 27 Wrigley
- 29 Director Spike
- 30 "SNL" announcer Pardo
- 32 Like some jacks
- 34 Nassau's islands
- 37 America's uncle
- 39 Stare
- 42 Place to heal
- 44 1945 conference site
- 45 Palm starch
- 46 Fellow
- 48 Fat
- 49 Oklahoma city
- 50 Commotions
- 53 Sphere
- through the woods
- 5 Inebriated
- 6 Stitch
- 7 Offstage areas
- 8 Crete-born painter
- 9 Sightseers' stop
- 10 Devil's purchase
- 11 Brutus' being
- 16 Snare, for one

© 2016 King Features Synd., Inc.

Just a Pinch

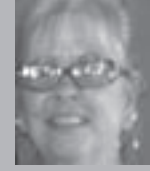
Sharing Hometown Recipes, Cooking Tips and Coupons
By Janet Tharpe

Uncle Wiley's Fantastic Chicken Salad

"My uncle makes the best chicken salad!"



Debbie Burbank's Uncle Wiley's Chicken Salad recipe is so good your guests will be asking you for the recipe. This chicken salad is great for brunch, a light lunch or to serve at a cookout this summer. The sour cream adds a delicious tang that I can't get enough of!



Debbie Burbank
Gardendale, AL
(pop. 13,893)

See step-by-step photos of Debbie's recipe plus thousands more from home cooks nationwide at: www.justapinch.com/wileyschickensalad You'll also find a meal planner, coupons and chances to win! Enjoy and remember, use "just a pinch"...

- Janet

Uncle Wiley's Chicken Salad

What You Need

- 4 c poached boneless chicken breasts, diced
- 1 c celery, finely chopped
- 1 c pecans, chopped
- 1 c dried cranberries
- 1 1/2 c white seedless grapes, cut in fourths
- 1 c white raisins
- 4 oz sour cream
- 1 c mayonnaise
- Salt and black pepper, to taste

Directions

- Poach chicken breast. This can be done the day before.
- When ready to make the salad, dice the chicken.
- In a large bowl, mix all of the ingredients.
- Add salt and black pepper to taste.
- Add additional mayonnaise if necessary.
- Serve with crackers or it makes a great sandwich with lettuce and tomatoes.

Submitted by: Debbie Burbank, Gardendale, AL (pop. 13,893)
www.justapinch.com/wileyschickensalad

Brought to you by American Hometown Media

Get the Good News!

All puzzle answers on B7

NOVICH INSURANCE AGENCY
Twin Bridges • Phone 684-5701
For All Your Insurance Needs
Serving The Ruby Valley For Over 40 Years

BENEDICT BUILDERS LLC
BUILDING CUSTOM HOMES & COMMERCIAL BUILDINGS SINCE 1974
MEETING ALL EXCAVATION NEEDS TOO!
406.843.5330
PO Box 294 VIRGINIA CITY, MT 59755

SKYLINE SURVEYING INC.
MARGARET STECKER, PLS • (406) 581-0144
BOX 321, McALLISTER, MT 59740
* Property Corner Location * Boundary Surveys * Boundary Realignments
* Family Transfer Surveys * Subdivisions * Construction Layouts
* Elevation Certificates * Aerial Mapping * Topographic Surveys

"Stick With The Best!"
BOWMAN APPLIANCE SERVICE
1035 S. Main St. • Butte, Montana 59701
(406) 723-6797
We Work On All Major Brands.
In Ennis, Sheridan and Twin Bridges and surrounding areas
EVERY WEDNESDAY

H.F. HARDY PAINTING & DECORATING
PPG PITTSBURGH PAINTS
Interior/Exterior • Painting/Staining
Hardwood Floor Finishing
Prenfinishing of Mill Work
Media Blasting • Chinking
PPG AND AKZO NOBEL PRODUCTS AVAILABLE AT OUR RETAIL STORE: THE PAINT DOCK
paintdock@3rivers.net
842-5119 • Sheridan

JOE VELAND
406.682.3999
SERVICE WORK
NEW CONSTRUCTION
REMODELS
PO BOX 987
ENNIS, MT 59729

the Madison County MARKETPLACE

View classifieds online at www.madisoniannews.com/classifieds.

HELP WANTED

Madison Valley Medical Center is currently seeking a **Full-Time Cleaning Specialist**. This is a full-time hourly position with health benefits. The main responsibility of the cleaning specialist will be to maintain the cleanliness of and sanitary conditions in Madison Valley Medical Center by performing various cleaning and maintenance activities. Must be able to stand, bend, and walk frequently for a six hour shift. For more detailed information about the position and to download an application visit our website at www.mvmedcenter.org/careers. Please, email applications and resumes to careers@mvmedcenter.org or drop them off in the main lobby of the hospital. Starting salary of \$11 plus benefits. 25-tfc-b



Combination Technician
3 Rivers Communications is looking for a Telecommunications Combination Technician. This position is responsible for general support and maintenance of 3 Rivers equipment. This is a full-time position and based in Ennis, MT. A Combination Tech performs the following tasks:

- Perform installation and maintenance duties of phone, internet and TV (DSL, Ethernet, IPTV and Wireless equipment)
- Basic troubleshooting of POTS and data
- Locating buried copper cable or fiber
- Splice and troubleshoot fiber optic cable and copper wire
- Work with analog and digital subscriber equipment and aids network with t-1 problems
- Run Jumper wires and change blades
- Work with Network employees and Central Office equipment when needed

To apply or for more information, please contact the Human Resources Department at 406-467-4410 or write PO Box 429, Fairfield, MT 59436 or e-mail Robert.frost@3rivers.coop. An application is available online at www.3rivers.net/employment.php. The application deadline is Friday, June 3, 2016 at 5:00 pm. 3 Rivers Communications is proudly an Equal Opportunity - Affirmative Action employer. 3 River Communications requires a background check and drug screening test as a part of its selection and hiring process.



The Madison Valley Manor is hiring full time and part time Certified Nursing Assistants. This is a great opportunity to work in a personal healthcare setting.

- Excellent pay
- Government retirement.
- Benefits including life and health insurance.
- Relocation bonus.
- Tuition reimbursement.
- Free training and C.N.A. certification available.

If you are interested in a rewarding career in healthcare, Madison Valley Manor is the place. Please contact Christine Canterbury, DON at 682-7271 for more information. EOE

Registered Nurse

Madison Valley Medical Center is currently seeking a full time Registered Nurse to work the night shift. Under general supervision the Registered Nurse is expected to plan and implement nursing processes of assessment, evaluation, and execute clinical skills in the promotion of health. RN is expected to incorporate evidence-based nursing practices consistent with national standards. RN will assume great responsibility and accountability for the quality of nursing care rendered. It is expected that RN will direct the activities of nursing and ancillary caregivers while maintaining standards of professional care. Full-Time: 7:00 PM - 7:00 AM MINIMUM QUALIFICATIONS: • Graduate of an accredited School of Nursing • Current Montana State License as an RN • ACLS • CPR • BLS • Experience and competency to work in an Emergency Department setting To apply for this position, please complete an Employment Application which can be found at www.mvmedcenter.org and submit your resume to careers@mvmedcenter.org. 20-tfc-b

Place Your Classified
682-7755

Seasonal housekeeper wanted. Apply in person at 307 S. Main - Kings Motel - or call 684-5639 and ask for Marsha. In Twin Bridges. 31-tfc-b

Bob's Place in Virginia City is now hiring for summer help! Servers and cooks. Experience a plus but not required. Fun, fast paced environment. Call Kirk 865-0529 28-2-b

Virginia City Outlaw Cafe under new management. Hiring line cooks. Call (406) 580-6669. 29-tfc-b

NOTICE OF BOARD VACANCIES:

The Madison County Board of Commissioners has a vacancy on the Big Sky Transportation District Board, and a vacancy for a Madison County member on the Big Sky Meadow Trails, Recreation, and Parks Special District Board, ("Members of these two boards must reside in the respective county and either own property or reside within the district boundary from which they are appointed..."). The Board of Commissioners also has vacancies on the Library Board, the Mental Health Local Advisory Council (3 positions), the Planning Board representing the Pony, Norris, Harrison Area, the Sheridan Cemetery Board, the Virginia City Cemetery Board, the Virginia City Fire District Board, and the Newly Created County Road Review Committee (7 positions). If you are interested in serving on any of these boards please contact the Commissioners' Office at 406-843-4277, by email at madco@madison.mt.gov, or visit our website at www.madison-countymt.gov. 30-2-b

Help Wanted: Harrison Public School is seeking a part-time janitor for the 2016-17 school year, to start in August of 2016. The position is approximately 30 hours per week at a rate of \$10.25 per hour. Please contact Mr. Hofman or District Clerk, Judi Ward for an application at the school or by calling 658-3428. 28-4-b

Ruby Valley Fly Fishing Lodge looking for part time/full time housekeepers. Please call 842-5250. 30-2-b

Seeking full/part time experienced lawn care and landscaping crew members and general laborers. Pay DOE. 640-0601 31-tfc-b

Hiring customer service/sales associate. Full or part time will be considered. Building material knowledge helpful but not required. Pay based on experience. Stop in and talk to Kyle today. Ennis Lumber Company. 29-4-b

Titan Construction is hiring for a truck driver and equipment operator. CDL is a must. Pay DOE. Part time seasonal with opportunity to turn into full time. Random drug/alcohol testing. To apply call 682-7714. 31-1-b

NOTICE OF COUNTY ROAD REVIEW COMMITTEE:

The Madison County Board of Commissioners recently created a County Road Review Committee which will consist of 6 members of the public and one county employee (7 members) to address clarification of disputed County roads.

Persons interested in serving on this committee:

- Should be generally open-minded on this issue.
- Should have a general understanding of varied issues related to County roads.
- Should have some knowledge of County roads throughout Madison County.
- Should be willing to take time to research and review any information related to specific County roads.
- Should be willing to participate cooperatively in meetings which include persons with differing interests in County roads.

If you are interested in serving on this committee please contact the Commissioners' Office at 406-843-4277, by email at madco@madison.mt.gov, or visit our website at www.madisoncountymt.gov. 30-2-b

Ruby Valley Hospital HAS THE FOLLOWING POSITION OPEN:

• PATIENT SERVICES REPRESENTATIVE - Clinics: - Full-time position (36 hrs. /week) serving our Medical Clinics.
Duties include: Receptionist, Patient Scheduling & Registration, Cashiering, Medical Record Filing, and other office functions as assigned. Candidates must be thorough and accurate and be able to demonstrate strong customer service skills. Candidates must also be Knowledgeable of HIPAA Laws and other Privacy Acts and their requirements. Requirements: 2 to 3 years in a hospital or health care organization. Must have Excellent Computer Skills. Reports to: Billie Jo Rowberry, Revenue Cycle Manager **IF INTERESTED IN THIS POSITION or you know of someone locally that would be interested, PLEASE CONTACT: DENNIS J HOLSCHBACH, CFO / DIRECTOR OF HUMAN RESOURCES / COMPLIANCE OFFICER** Please apply by letter and Resume / Application. This position will be open until filled. Ruby Valley Hospital is an Equal Opportunity Provider and Employer. 31-1-b

Madison Valley Ranch seeking part-time housekeeper 2-3 days/week for 5 hours. Competitive compensation. Please call (406) 682-7822 or email mvr@3rivers.net. 29-tfc-b

Madison Valley Ranch seeking part-time server 1-2 evenings/week for 2-3 hours. Four-course dinner provided! Competitive compensation. Please call (406) 682-7822 or email mvr@3rivers.net. 29-tfc-b

Seeking seasonal cook at Ruby River Ranch, Alder. Call 842-7297 29-2-b

Full Time dentist hygienist needed to work in Sheridan, MT. Wages competitive, - DOE, profit sharing, health insurance, 2 weeks paid vacation. Contact Dr. Tom Bartoletti, 842-5400 or email: mdot56@hotmail.com 31-2-b

Part and/or full time position open at Main Street Market in Twin Bridges. Must be friendly, honest and hard working. Stop in or call Theresa at 596-5933. 31-2-b

The Alley Bistro is seeking year round PT/FT servers. Experience preferred. Also looking for PT dishwashers. Stop in for an application or call John at 209-4031. 31-tfc-b

McAllister Inn hiring line cook. Please stop by for application or call 682-5000. 23-tfc-b

Looking for a laborer. Wages start at \$15/hr. Call 682-7103. Ask for Eric. 27-tfc-b

Place Your Classified
682-7755

LAND FOR SALE

Madison River Property
3,357 acres on the Upper Madison River with an abundance of water. 406-538-5271 Agent www.phillips-realty.com 30-2-b

FOR RENT

Office Space for Rent - 637/ SF upstairs unit located downtown Ennis in the Lone Elk Mall. Common area amenities include use of conference room. Utilities included. \$400/mo. 640-1351 30-tfc-b

MADISON MANAGEMENT
Vacation and Long Term Rentals 570-5401 www.madisonmanagement.com 22-tfc

For Rent: Large storages - 14x48 \$165/mo., 12x40 \$125/mo. Large doors and concrete floors. Boats, RV's, Warehouse. Available May 1st. Call Bob 925-1362. 22-tfc-b

FOR RENT: Large mobile home site 1 mile from Ennis. 100 x 150', water & sewer, country atmosphere, quiet. **NO DOGS.** 682-4854. 29-tfc

FOR RENT: Call Apex Management at 682-7112 or 581-0103 for long term or vacation rentals in Ennis and the Madison Valley. 1-tfc

BARKER VILLAGE APARTMENTS:
1 bedroom unfurnished apartments available in Ennis. A/C, washer/dryer equipped, private location. 1 year lease, \$650 per month plus security deposit, utilities included, non-smoking, no dogs. Call Erich Vogeli, Manager at 406-682-5737. 15-tfc

FOR RENT: Duplex apartments. 1 Br. W/D, AC. 1 year lease. \$750/month, utilities included. N/S, no dogs. In Ennis. Call Erich Vogeli at 406-682-5737. Security Deposit. 26-tfc-b

PETERSON'S DISCOUNT STORAGE
Indoor & Outdoor RV/Boat storage, storage units. Ennis, 682-7442 18-tfc-b

BARKER VILLAGE APARTMENTS:
1 bedroom furnished apartments available in Ennis. A/C, washer/dryer equipped, private location. 4 month lease, \$700 per month plus security deposit, utilities included, non-smoking, no dogs. Call Erich Vogeli, Manager at 406-682-5737. 15-tfc

Sheridan 1bd 1 ba apartment for rent. \$400/mo. All appliances included. NO pets. Contact Ridgely at 596-4495. 31-tfc-b

Horse Pasture for Rent. Ennis. \$85/month per head. 31-2-b

FOR SALE

1999 3/4 ton Chevy Silverado 2500. 235,000 miles. Gooseneck hitch. \$2,500 OBO. 406-890-8735.

1976 Silverline Outboard Motor Boat, Good Condition, w/Much Newer Mercury 90HP Motor, Minn Kota trolling Motor, Lowrance X65 Fish Finder, on Calkins Trailer. Ennis, \$9000 OBO, Text or Call 406-581-6091 28-4-b

Extra long twin mattress, box spring and frame \$50. TV console 56x21.5' - H 26.75 with clear cherry finish \$150. Call 682-7949 31-1-p

For Sale by owner. 1,900 sq. foot, 3 bd/2 ba attached garage, large lot in Ennis. \$200,000. 682-3329 28-4-b

Baby chicks, bantams, ducklings and goslings. Also guinea keets and turkeys. We also have feeders available for sale. 696-1612 30-tfc-b

The ultimate hunting & fishing 4x4 - 2013 Nissan XTerra 26,000 miles one owner. Lots of extras. Great shape. 459-4615 \$22,250. 31-tfc-b

SERVICES

MADISON SHOPPER
Shopping and delivery service Bozeman to Ennis. Rebecca Barney 406-640-1254 29-4-b

GO-PHER-IT DIGGING
Mini-Excavator/ 4x4 Tractor/ blade/bucket/ post auger
: low impact / cross lawns
: only 5 ft wide
: dig for tree planting
: dig deck supports
: trench water / sewer / lines
: blade new driveways
: No Job too small!
Low Cost! Senior Discount!
Woman owned & Operated
406-842-7737 or 916-600-3018 30-1-b

Madison Valley Caring & Sharing
Hours:
Mon. Noon-2:00 p.m.
Sat. 9-11:00 a.m.
Wed. 5-7 p.m.
Lone Elk Mall, Unit 4. Ennis. 682-7844 30-tfc-b

BLAKE MCKITRICK
CERTIFIED FARRIER
Horse Shoeing & Trimming
Call (406) 595-5379 31-tfc-b

Expert Tree Care
406-683-5592
406-865-0000
60' Lift Truck
Spring is the ideal removing and pruning time!

ESTATE SALES

MULTIPLE ESTATE Annual Sale
At The Children's Center Luncheonroom
TWIN BRIDGES THURSDAY, FRIDAY & SAT
May 19th, 20 & 21st
Open at 10 AM
FILLED with items from around the state!
Everything is Priced, No waiting, Pick what you want.
There is something for Everyone!!!!
SEE PHOTOS and Directions at:



GARAGE SALE

Multi-family yard sale. Furniture, clothes, dishes, knick knacks, pictures, misc. Saturday May 28, 9 am - 3 pm. No early sales. 17 White Swan Lane in Twin Bridges. Behind highway state shop. 31-1-b

WANTED

Two responsible adults looking for a rental in Ennis (or a long term care-taking situation) . We have many local references. Call Christine at 600-6379. 25-tfc-b

Wanted. Custom haying round bales on shares or by the ton. 406-683-4855 or 406-660-0110 28-2-b

TO BID

Invitation for bids: Weed Spraying in Shining Mountains. Send info to SMOA PO Box 452 Ennis, MT 59729 29-3c-b

Jefferson Rural Fire District taking bids for 1985 Dodge mini pumper. 360 Engine. Four wheel drive. 4 speed manual transmission. 28, 432 mi. Send bids to PO BOX 596, Whitehall or call 490-9408. We reserve the right to refuse any or all bids. 30-3-b

PUBLIC NOTICES

NOTICE OF CONVERSION RUBY VALLEY NATIONAL BANK

Notice is given that Ruby Valley National Bank, a national banking association with its principal office at 107 S. Main, Twin Bridges, MT, 59754, has applied to the Montana Department of Administration, Division of Banking and Financial Institutions for authorization to convert to a commercial bank under the Montana Bank Act. This notice is published by order of the Board of Directors in accordance with section 32-1-374, M.C.A. (2015). RUBY VALLEY NATIONAL BANK By: /s/ Kenneth Walsh, President (Pub. May 5, 12, 19, 26, 2016) rvnb MNAXLP

NOTICE TO MADISON RIVER WATER USERS

(Pursuant to Section 85-2-233(6), MCA) A Motion to Amend the Preliminary Decree of Statement of Claims 41F 30103764 and 41F 30103765 has been filed with the Montana Water Court by Claimants John R. McDonnell and Christene MJ McDonnell and Sandra K. Kamerman and Bradley W. Kamerman. The McDonnells and Kamermans have requested the Court correct the point of diversion of the claims to the SWSWE of Section 33, Township 1 North, Range 2 East, Gallatin County, Montana and the ditch name to Crowley Ditch. Objection Date Any response or objection to the Motion to Amend must be filed with the Montana Water Court, PO Box 1389, Bozeman, MT 59711-1389, within 45 days of the last date of publication, in accordance with Section 85-2-233(6), MCA. A copy of any response or objection must be served on the McDonnell's attorneys, Dana Elias Pepper and Bina R. Peters, Pepper Law Firm, PLLC, PO Box 477, Bozeman, MT 59711 and Kamerman's attorney, Calvin Braaksma, Braaksma & Miller, PLLC, 1227 North 14th Avenue #3, Bozeman, MT 59715. Please indicate "Case 41F-A17" on any response, objection or other filing related to this Motion to Amend. (Pub. May 12, 19, 26 2016) plf MNAXLP

NOTICE TO CREDITORS

MONTANA FIFTH JUDICIAL DISTRICT, MADISON COUNTY IN THE MATTER OF THE ESTATE OF: BRENDA LEE BARNABY, Deceased. Probate No. DP 29-2016-12 NOTICE IS HEREBY GIVEN that the undersigned has been appointed Personal Representative of the above-named estate. All persons having claims against the said deceased are required to present their claims within four months after the date of the first publication of this notice or said claims will be forever barred. Claims must be either mailed to CURTIS HAYDEN, Personal Representative, c/o Krueger Law Firm, P.C., P.O. Box 718, Sheridan, MT 59749, return receipt requested, or filed with the Clerk of the above Court. Dated this 9th Day of MAY, 2016. I declare under penalty of perjury under the laws of the state of Montana that the foregoing is accurate and complete to the best of my

knowledge and belief. /s/ Stephanie Gehres Krueger STEPHANIE GEHRES KRUEGER Attorney for Personal Representative (Pub. May 19, 26, June 2, 2016) sk MNAXLP

NOTICE TO CREDITORS

MONTANA FIFTH JUDICIAL DISTRICT, MADISON COUNTY IN THE MATTER OF THE ESTATE OF: MYRNA ANN THOMPSON, Deceased. Probate No. DP 29-2016-13 NOTICE IS HEREBY GIVEN that the undersigned has been appointed Personal Representative of the above-named estate. All persons having claims against the said deceased are required to present their claims within four months after the date of the first publication of this notice or said claims will be forever barred. Claims must be either mailed to RONE CHARLES THOMPSON, Personal Representative, c/o SCHWASINGER & FALLAW, P.C., PERSONAL REPRESENTATIVE'S ATTORNEY, AT 517 S. 22ND AVENUE, SUITE 2, BOZEMAN MT 59718, return receipt requested, or filed with the Clerk of the above Court. Dated this 9th Day of MAY, 2016. I declare under penalty of perjury under the laws of the state of Montana that the foregoing is accurate and complete to the best of my knowledge and belief. /s/ Stephanie Gehres Krueger STEPHANIE GEHRES KRUEGER Attorney for Personal Representative (Pub. May 19, 26, June 2, 2016) spfc MNAXLP

NOTICE TO CREDITORS

MONTANA FIFTH JUDICIAL DISTRICT, MADISON COUNTY IN THE MATTER OF THE ESTATE OF: KEITH PAUL SMAIL, also known as KEITH P. SMAIL, Deceased. Probate No. DP-29-2016-16 That the undersigned has been appointed Personal Representative of the above-named estate. All persons having claims against said decedent are required to present their claims within four (4) months after the date of the first publication of this notice, or said claims will be forever barred. Claims must either be mailed to WILFRED B. BARIL, the Personal Representative, return receipt requested, at 21240 W. Sycamore Drive, Buckeye, AZ 85396 or filed with the Clerk of the above-entitled Court. Dated: April 7, 2016 //s// WILFRED B. BARIL Personal Representative STATE OF ARIZONA ss COUNTY OF MARICOPA WILFRED B. BARIL, being first duly sworn, upon oath, deposes and says: That he has read the foregoing NOTICE TO CREDITORS and that the facts and matters contained therein are true, correct, accurate and complete to the best of his knowledge and belief. I make this declaration under penalty of perjury under the laws of the State of Montana. //s/ WILFRED B. BARIL Personal Representative

SUBSCRIBED AND SWORN to before me this 7th day of April, 2016. //s// Cupertino Sanchez Notary Public for the State of Arizona Residing at: Buckeye, Arizona My Commission expires: September 12, 2019 (SEAL) Personal Representative's Attorney: Karen McMullin Post Office Box 55 Ennis, MT 59729 Telephone: (406) 682-7878 (Pub. May 19, 26, June 2, 2016) km MNAXLP

INVITATION FOR BIDS

LEASE OF STATE LANDS (Sealed bids will be accepted by the Montana Department of Natural Resources and Conservation, Ag & Grazing Management Bureau, P.O. Box 201601, Helena, Montana 59620-1601, through June 2, 2016 for a 10-year grazing lease on the following described lands in Madison County. West of Bayer's Lane Rd, Section 18, T2S, R5W, containing 3 acres of grazing land. The minimum bid is \$58.71 based on a grazing carrying capacity of 3 AUMS at a rate of \$19.57 per AUM. By law all bids in order to be considered valid must include a deposit in the form of a certified check, cashier's check or money order in the amount equal to 100% of the amount bid for grazing, a non-refundable lease application fee of \$25.00. In order to be considered, all bids must be accompanied with a completed application to lease state lands. The successful bidder must in addition to the rental, make settlement with the owner of the existing improvements on the land. The State Board of Land Commissioners reserves the right to reject any and all bids. Bid forms may be obtained from the Department at the above address or in person at 1625 11th Avenue, Helena or by calling 406-444-4951 Ag & Grazing Management Bureau Montana DNRC (Pub. May 19, 26 2016) dnrc MNAXLP

PUBLIC NOTICE

Individual transportation contracts for the 2016-2017 school year are available upon request in the Alder School District Office. Parents/guardian of any student attending the Alder School that are at least 3 miles from the school and who are district residents may be eligible for transportation reimbursement. Contracts are due to District Clerk Kathleen Wuefling, no later than June 1, 2016. (Pub. May 19, 26 2016) as MNAXLP

RUBY VALLEY CONSERVATION DISTRICT AND RUBY WATERSHED COUNCIL

REQUEST FOR PROPOSALS Upper Ruby RAC Project The Ruby Valley Conservation District and Ruby Watershed Council are calling for proposals for chemical weed control within the confines of a RAC project area located in the Upper Ruby Watershed in the Beaverhead-Deerlodge National Forest. Priority areas have been identified within the project area

and maps of these priorities are available at the Ruby Valley Conservation District office. All work must be completed by August 1, 2016. Planned treatment of noxious weeds for this project is primarily Spotted Knapweed, Houndstongue, Canada Thistle, Hoary Alyssum, Field Scabious and possible isolated patches of Yellow Toadflax. Proposals will be accepted until the close of Business at 5:00 PM, May 27, 2016. Proposals will be reviewed on Tuesday, May 31, 2016 and notice will be given to chosen contractor on Wednesday, June 1. For more information or to request proposal requirements, please contact Rebecca Ramsey, Ruby Watershed Coordinator at rubywatershed@gmail.com or (406)842-5741 x106. (Pub. May 19, 26 2016) rws MNAXLP

PUBLIC NOTICE

The Board of Madison County Commissioners will not be holding their regular Commission meeting on May 30, 2016, as County Offices will be closed for the Memorial Day Holiday. The next regular meeting following this date will be held on Monday, June 6, 2016. (Pub. May 19, 26 2016) MCC MNAXLP

PUBLIC NOTICE FORM FOR CHANGE OF LOCATION

Notice of Intent to Transfer Location of Air Quality Permit (Pursuant to Section 75-2-211, MCA, and ARM Title 17, Chapter 8, Subchapter 7, PERMIT, CONSTRUCTION AND OPERATION OF AIR CONTAMINANT SOURCES). Knife River will file on or about 5/18/2016, a notification of intent to transfer location of an air quality permit with the Permitting and Compliance Division/Air and Waste Management Bureau of the Montana Department of Environmental Quality. Applicant seeks approval of its transfer of location of Nordberg LT105 Jaw Air quality Permit #4200-00 to Section 17, Range 1W County Madison Intersection of Varney Road & Gravelly Range Road. The division must approve or disapprove the permit transfer within 30 days of receipt of a complete notice of intent. Any member of the public with question or who wishes to review a copy of the permit and the division's analysis of it or to submit comments on the change of location must contact the division at 1520 East Sixth Ave., P.O. Box 200901, Helena, Montana 59620-0901 phone (406) 444-3490. Any comments on the location transfer must be submitted to the division within 15 days after the date of this publication. (Pub. May 26, 2016) kr MNAXLP

NOTICE OF FORECLOSURE

This is public notice from B & D Keylock to the Lessee of Unit #191 located at 3538 Hwy 287 in Sheridan, MT 59749 that your Unit is under foreclosure proceedings. (Pub. May 26, June 2 2016) bdk MNAXLP

SPRING HORSEBACK POKER RIDE & POKER WALK
MEMORIAL DAY WEEKEND
SATURDAY, MAY 28TH, 2016
VIRGINIA CITY, MONTANA

REGISTRATION FROM 8:30AM-10AM
AT BALE OF HAY SALOON

\$15 ADMISSION FEE
(LUNCH INCLUDED)

First and last cards drawn at the Bale

For more info, call Bale of Hay at 843.5700

PRIZES FOR 1ST, 2ND & 3RD

And... **SUMMER KICK-OFF PARADE STARTS AT 1:30!**

One-Man Band, Eric Haines, will lead our Summer Kickoff Parade on May 28th at 1:30pm!!

Eric will also be performing in and out of businesses and on the boardwalk Saturday afternoon, evening & Sunday until 2pm!

Major Sponsor

www.virginiacity.com

SHOP SPACE FOR RENT IN ENNIS

All sizes available up to 1,200 square feet
Heated, insulated, large doors, half bath.
Gary at 581-3531 or Paul at 581-7878

D&D Auto, Inc.
AUTO & TRUCK SALES

We Are YOUR Go to Guys!
Auto & Truck Repair - Gas or Diesel - All Makes & Models

We Make Hydraulic Hoses
New Tires, Wheels & Tire Repairs
Engines & Transmissions Installed - Car & Truck Accessories

We Install Windshields - Alignments

ENNIS • 682-4537
Daily Parts Deliveries to Alder, Sheridan & Twin Bridges Areas
24 Hour Towing (CELL 406-570-9872)

Conservation Easement Workshops



The USDA Natural Resources Conservation Service and its conservation easement partners are hosting two conservation easement workshops in southwest Montana the 2nd week of June:

- June 9, 2016, Twin Bridges**
Montana Room at the Twin Bridges School
216 West 6th Street
9:00 a.m. to 12:00 noon
- June 10, 2016, Stevensville**
Lee Metcalf Refuge
4567 Wild Fowl Lane
9:00 a.m. to 12:00 noon

NRCS and other conservation organizations offer different easement options that agricultural landowners can use to protect and/or restore wetlands, wildlife habitat, and agricultural resources. Workshop speakers will explain different easement options and how those can be tailored to meet the long-term conservation goals of landowners.

If you have questions about the workshops or if you require special accommodations, contact Abby Dresser at 406-544-6445 or abby.dresser@mt.usda.gov.

USDA is an equal opportunity provider, employer, and lender. USDA provides reasonable accommodations for all persons with disabilities to participate in USDA programs and activities.

Get Results

sales@madisoniannews.com

Jeffers-Gustafson ESTATE AUCTION
245 Jeffers Rd, Ennis (S of Ennis, left on Jeffers Rd)
SUNDAY; JUNE 5, 2016 @ 11am (Doors Open 9:30am)

SHIRLEY GUSTAFSON ESTATE! This is an Historic Auction for the Jeffers-Gustafson Family Estate in the beautiful Madison Valley. Being offered are items belonging to the original founding family of Jeffers, MT! Having made the long journey from "back East", this family settled the Madison Valley in the 1870's and subsequently founded the town which still bears their name! The treasures being offered in this auction have been in the family for generations! Lots of surprises! You don't want to miss this auction! BRING YOUR TRAILER!

HAGEDORN AUCTION
Flyer, Photos, & Terms Are Online At: (406)684-5181
WWW.HAGEDORNAUCTION.COM

Three Great Services Under One Roof!

MDM CONSTRUCTION **GOT GUTTERS** **HIGH R INSULATION**

Locally Owned & Operated
Free Estimates - Licensed & Insured

Call Mike McKitrick Today!
406-682-4529

100 Prairie Way #2 - Ennis, Mt 59729

AROUND THE COUNTY

Conservation easement workshop

SUBMITTED BY REBECCA RAMSEY
Ruby Watershed Coordinator

The United States Department of Agriculture's Natural Resources Conservation Service and its conservation easement partners are hosting a workshop in Twin Bridges on June 9 in the Montana Room of the Twin Bridges School. The workshop will run from 9 a.m. to noon.

Workshop speakers will explain different easement options and how those can be tailored to meet long term conservation goals of landowners. If you have questions or if you require special accommodations, contact Abby Dresser at 544-6445.

The Elling House Arts and Humanities looks to purchase Elling House

SUBMITTED BY ABBY THOMAS
The Elling House Arts and Humanities Center

The Elling House Arts and Humanities Center, which brings cultural events to the area and celebrates local talent, has leased space in the historic Elling House in Virginia City since its inception in 2008. Now the property owner is ready to part with the historic 1876 stone house landmark, and the organization is mounting a campaign to purchase the building as a permanent home for the arts and humanities in rural Madison

County. Their vision includes bringing an executive director on board to expand current programming, partner with other arts organizations and make the center an even more vibrant resource in the community.

The Elling House Arts and Humanities Center hosts community events and programs throughout the year, and showcases an artist of the month through the summer months.

If you are interested in helping with the center's endeavor, find more information online at www.ellinghouse.org. Gifts to the capital campaign will be augmented with grants to raise the purchase price for the Elling House.

Sheridan fun run/walk

SUBMITTED BY ROBIN BIEROTH
Sheridan Relay for Life

The Sheridan Relay for Life teams are hosting a fun run/walk on June 4 at 9 a.m. - registration opens at 8 a.m. - at the Sheridan baseball field.

Registration forms can be picked up at either Ruby Valley National Bank or Ruby Valley Hospital. All proceeds will go to the American Cancer Society. For information about fees and anything else, call Robin Bieroth 842-5362 or Erin Rossiter at 842-5851.

Entertainment in Virginia City

SUBMITTED BY CHRISTINA KOCH

Eric Haines, a Montana native and nationally recognized

entertainer, is returning to his former stomping grounds of Virginia City for Memorial Day Weekend. With a bass drum on his back, a banjo over his shoulder and plenty of bells and whistles everywhere else, his classic one man band delights children and adults alike, with opportunity for observers to play along on maracas, spoons and a special washboard equipped with a cowbell. Haines is also a master stilt walker, who proves once and for all that eating your vegetables will make you grow big and tall.

Memorial Day veterans remembrance

SUBMITTED BY MIKE MORGAN
Anderson-Simpson Post 89

Anderson-Simpson Post 89 of The American Legion will be conducting Memorial Day veterans remembrance ceremonies at the Sheridan, Laurin, Taylor, Nevada City and Virginia City cemeteries on Memorial Day, May 30, 2016. The first ceremony will start at 11 a.m. in the veterans' plot area of the Sheridan Cemetery. Services at the other cemeteries will follow in the order of Laurin, then Taylor, then Nevada City and lastly the Virginia City Cemetery about 1 p.m. These services honor our Ruby Valley veterans who have served our Nation honorably and are no longer with us today. Please join us in recognizing these special men and women. Questions concerning the services can be made to Paul Marsh, post commander, at 842-7956 or post adjutant Mike Morgan at 842-5085.

Ruby Valley Baptist Church
Tony Shaw, Pastor
842-5602

Sunday School 9:45 a.m.
Worship Service 11 a.m.
Sunday Evening 6 p.m.
Wednesday Eve 7 p.m.

One block behind IGA, Sheridan



Find Fellowship With Us

Rocky Mountain Baptist Church
406-600-1342

Pastor Phil Taylen
Sunday School 9:45 am
Morning Worship 11:00 am
Prayer Meeting
Thursday 6:00 pm

606 Comley Way, Ennis
6 Blocks South of City Complex

Located in the heart of Madison Valley for the Hearts of Madison Valley

Dayspring Church
Worship 10:00 a.m.
Sunday School/Nursery
Non-Denominational Christ Centered, Spirit Led Worship
Joel Trenkle/Pastor
Check website for ministries: dayspringsheridan.com

596-0707 • 3648 Hwy 287
Between Sheridan & Twin Bridges

HARRISON COMMUNITY CHURCH
Harrison, Montana
Adult Bible Study ~ 9:30 a.m.
Sunday School & Church Services ~ 10:30 a.m.

Pastor Joe Miller
Come Worship & Sing Praises To Our God. Spread the Word!

CHURCH OF JESUS CHRIST OF LATTER-DAY SAINTS
Sheridan Ward - Visitors Welcome

Sacrament Meeting
Sundays, 10:00 a.m.
Sunday School
11:20 a.m.

R S & Priesthood
12:10 p.m.
Mutual (Youth Group)
Weds. 7:00p.m.
3560 | MT State Hwy 287
Sheridan 842-5860

Bishop Dustin 684-5255

Liturgy Schedule

St. Patrick, Ennis
Sunday ~ 8:30 a.m.

St. Mary, Laurin
Sunday ~ 10:30 a.m.
Deacon Andy Dorrington,
Pastoral Administrator ~ 842-5588

Madison Valley Presbyterian Church
WORSHIP
September - April ~ 11 a.m.
May - August ~ 9 a.m.
Everyone Welcome
Fully Accessible

Rev. Jean M. Johnson
682-4355 ~ Ennis
Corner of S. Charles & W. Hugel

Dr. Ray Teston
Pastor
Sunday School ~ 9:45 a.m.
Morning Worship ~ 11:00 a.m.

5050 Hwy 287, PO Box 668, Ennis, MT
Phone 682-4244 SBC
MADISON VALLEY BAPTIST CHURCH
Aides for the hearing impaired

Shepherd of the Hills Lutheran Church
The Church of Word and Sacrament
Visitors Welcome

Pastor Ken Stensrud

- Sunday Service 9:00 am
- Bible Study 10:15 am
- Sunday School 10:15 am

Corner of Madison and Arnette St.
Ennis, Montana 406-682-4900

CHURCH OF JESUS CHRIST OF LATTER-DAY SAINTS
Ennis Branch

Sacrament Meeting
10:00 a.m.
Sunday School
11:20 a.m.
R S & Priesthood
12:10 p.m.

Family History Center
682-4911, 682-7415, 682-3614
Pres. Thompson 682-7415
133 MT Hwy 287

Christian Science Society
Sunday Service & Sunday School 10 a.m.

ALL WELCOME

Each week a Bible lesson full of healing Christian concepts is read aloud in our Sunday service.

4983 US Hwy 287 N. • Ennis, Montana
www.ChristianScience.com

NEW BEGINNINGS CHRISTIAN FELLOWSHIP
Your Local Assembly of God Church

114 N. Main, Sheridan
842-5845

Pastor Duane Deshner

Sunday Service
10:30 a.m. (Children's Ministry)

Wednesday (Kids/Youth)
6:30-8:00 p.m.

Kid's Club (3 yrs-4th grade)

Pre-Teen Youth Group (5th-6th grade)

Youth Group (7th-12th grade)

Ruby Valley Food Pantry
Saturdays: 10:00 a.m.-Noon

We are a church dedicated to serving this valley!

Ruby Valley United Methodist Parish
Invites You To Worship With Us

Lay Leader: Dave Reintsma
(406) 594-3287
Office: (406) 842-5934
Home: (406) 842-7732

Church of the Valley
Twin Bridges
Sunday School 11:00 a.m.
Worship 11:00 a.m.
Youth Group Weds at 6:30 pm

Bethel UMC
Sheridan
Worship 9:00 a.m.
Sunday School 10:15 a.m.
Youth Group Sunday evenings

Ready Set Grow Preschool
Contact Kaycee Gilman 842-5311

THE BAHAI FAITH
O ye sons of intelligence!
The thin eye lid prevents the eye from seeing the world and what is contained therein. Then think of the result when the curtain of greed covers the sight of the heart!

451-3923 or 1-800-UNITE
www.baha'i.org

ENNIS ASSEMBLY OF GOD
Loving God, Loving People

SUNDAY SERVICE	WEDNESDAY SCHEDULE
Christian Ed 9:45 am	Snack & Yack 6:30 pm
Morning Worship 10:45 am	Family Night 7:8:15 pm
(Nursery & Children's Church)	(Prayer meeting, Women's bible study, youth group, kids groups)

Pastor Greg Ledgerwood
402 Madison Ave - Ennis, MT 682-4197

Madison County Episcopal Churches
In full communion with the Evangelical Lutheran Church in America

Join Us for Sunday Worship!

Trinity	St. Paul's	Christ Church
Jeffers/Ennis	Virginia City	Sheridan
11:00 a.m.	Sunday 9:00 a.m.	Sunday 10:00 a.m.
		Bible Study 9:00 a.m.

www.rvec.org
Prayer requests: 682-4788 843-5296 842-7713

GRACE COMMUNITY FELLOWSHIP
In Association with The Conservative Baptists of America

SERVICE AT ALDER SCHOOL AT 10 AM WITH SUNDAY SCHOOL FOLLOWING

Christ-centered, Bible Based Teaching, Open Question Forum

Wearing and Sharing THE FULL ARMOR OF GOD

Tel. 406-842-5915
Pastor Tom Luksha

AREA SENIOR MEALS

SENIOR MEALS, VIRGINIA CITY
Senior meals for Madison County Seniors 60 and over will be served at the Virginia City Cafe on **Tuesday & Thursdays** (through May 2016) from 11:30 am to 2:00 for \$3.50.

May 12: Mac n cheese, green beans, roll, cookie
May 17: Quiche & salad bar, peach cheese cake crumble
May 19: Chicken enchiladas, rice, refried beans, cookies
May 24: Chicken salad on croissant, fruit, straw. shortcake
May 26: Hamburger casserole, salad, roll, choc. cake
May 31: Lasagna, salad, garlic toast, choc. ice cream

MEALS FOR SENIORS, TWIN BRIDGES
The TBS&CC provides meals for seniors every Tuesday and Friday at 11:30 a.m. at the Wagon Wheel Restaurant in Twin Bridges for seniors 60 years and up. (Spouse and caregivers are invited.) Donations for meals are appreciated.

RUBY VALLEY FOOD PANTRY, SHERIDAN
Open Saturdays from 10 a.m. - noon. Located at 114 N. Main St. in New Beginnings. Serving the Ruby Valley from Silver Star to Virginia City. Contact Sandy at 842-7843 or Wannetta at 842-5783 for more information.

MEALS ON WHEELS, SHERIDAN
The Sheridan Senior Center offers meals for seniors 60 years and over **Monday - Friday**. Seniors may choose to eat at the senior center, family style for \$3.50 or have their meal delivered for \$4.00. Delivered meals are within the city limits of Sheridan and should be called in by 10 a.m. Call Shirley Sand at 842-5966.

ENNIS MEALS ON WHEELS, ENNIS
Tuesday-Friday 11:45 am to 12:30 pm
Reservations 682-4422

To help us plan, please call at least 24 hours in advance for meal delivery or if you plan to dine in.
Ennis Senior center, 315 W Main Street

MAY 26, - JUNE 2, 2016 MENU

THURSDAY MAY 26: MAY BIRTHDAY DAY, SMOKE SAUSAGE ALFREDO BAKE, SALAD, DINNER ROLL, BIRTHDAY CAKE

FRIDAY MAY 27: BEEF PASTIES, GRAVY, ROASTED RED POTATOES, DESSERT

TUESDAY MAY 31: CHEESE QUESIDILLA, RICE, FRUIT, DESSERT

WEDNESDAY JUNE 1: SWEDISH MEATBALLS, MASHED POTATOES, VEGGIES, DESSERT

THURSDAY JUNE 2: BAKED FISH, RICE PILAF, VEGGIES, DESSERT

King Crossword
Answers
Solution time: 25 mins.

M	A	C	H	S	S	W	E	L	S	E	
A	L	A	I	L	E	I	L	A	O	S	
M	A	R	K	O	W	N	G	N	U	S	
E	N	T	E	R	S	G	I	R	D	L	E
D	U	B	S	T	E	M					
T	A	D	M	E	G	S	C	A	L	E	
S	H	O	O	D	U	B	O	R	E	D	
P	A	W	N	S	M	A	G	K	E	N	
N	E	A	R	H	A	Z	A	L	E	A	
A	H	O	Y	H	O	M	E	L	A	N	D
G	A	M	E	A	R	A	T	R	I	O	
O	P	E	D	B	B	S	A	D	D	S	

ALCOHOLICS ANONYMOUS
Meeting Every Thurs. at 8 p.m., Church of the Valley, Twin Bridges
ALANON MEETING
Same Time - Same Place

ALANON
Twin Bridges • Church of the Valley
Thursdays, 8 pm

ALANON
Pony School House • Weds. 7 pm
Suzy 685-3692

"Keep it Simple."
A.A. MEETING
Bethany Hall, Sheridan
(behind Methodist Church)
Wednesdays ~ 8 p.m.

Vennis Over The Hill Unity Group
Faced with a drinking problem?
Perhaps Alcoholics Anonymous Can Help.
SUZAN - 10 a.m., No Smoking,
Virginia City Library

MON. - Open, 7:30 p.m., Basement of M.V. Presbyterian Church, No Smoking
WED. - 7:30 p.m., Trinity Church in Jeffers
FRI. - Open, 7:30 p.m., Basement of M.V. Presbyterian Church, No Smoking

682-3490, 682-7023 Ennis
843-5352 Virginia City

Meets every Saturday at 6 p.m. & starts with a meal.

DAYSRING MISSION
3648 Hwy 287, Sheridan
596-0707

The Ennis Government Study Commission has completed their study and have prepared a final report, recommendation and reasoning. A copy is posted at Town Hall, Madison Valley Public Library and the Post Office.

Imerys Talc scholarship awarded

SUBMITTED BY KRIS PEYER
Imerys Talc

Local area high school graduates have been chosen to receive the 2016 Imerys Talc Scholarship in the amount of \$500 each.

Sheridan High School graduate, Ashton Russell, plans to attend University of Montana Western in Dillon. She wants to pursue a degree in visual arts with possibly a minor in English. Russell was a member of the National Honor

Society and was the forensics student of the year her junior year. She enjoyed being in the drama club, playing piano and church and youth group.

Harrison High School graduate, Matea Real, is going to the University of Montana Western. She is going to pursue a degree in English/creative writing. Real was a cheerleader and was also involved in the pep club at Harrison.

Ennis High School graduates, Samantha Kimmey and Stephanie Weddle, have been

chosen to receive the scholarships for their area.

Kimmey is planning to attend the University of Arizona to earn a Bachelor's degree in biochemistry. Her future plans are to find a job working as a forensic science technician for a while and then pursue the NASA astronaut candidate program. Kimmey was in the National Honor Society for three years, competed in volleyball, basketball and the Academic Olympics. She was the valedictorian of her graduating class.

Weddle is planning to attend Montana State University in Bozeman. She is going to pursue a Bachelor of Arts in environmental design and a Master's degree in Architecture. She was All State in basketball and volleyball for three years and in the National Honor Society for four years. Weddle was a member of the Business Professionals of America for four years and also the Family, Career and Community Leaders of America for four years.

Twin Bridges senior receives MUS scholarship

SUBMITTED BY SHEILA NEWLUN
Montana University System

The Student Financial Services Office (SFS) within the Montana University System is pleased to announce Alice Giem of Twin Bridges has been offered the Montana University System Honor Scholarship. The MUS Honor

Scholarship is a renewable scholarship offered by the Montana Board of Regents that waives undergraduate tuition for up to eight semesters at any campus of the Montana University System or Dawson, Flathead Valley or Miles community colleges. Students offered this scholarship must be gradu-

ates of an accredited Montana high school with a minimum grade point average of 3.4 at the end of their seventh semester in high school, take either the ACT or SAT standardized test, meet college preparatory requirements and attend an eligible campus.

In 2007, the Board of

Regents authorized a state-wide high school competition based on a GPA ranking score combined with an ACT composite score creating a total MUS Honor Scholarship composite score from which students offered the scholarship were selected. This year 246 scholarships were offered statewide.

Ruby Valley Hospital Physical Therapy Occupational & Speech Therapy
Hands on care for all your body needs.



Orthopedic & Sports Injuries
Total Joint Rehabilitation
Back & Neck Care
Sore Stressed Muscles
Tension Headaches & Chronic Pain

Self Care
Home Safety
Adaptive Equipment
Hand, Wrist - & Elbow Syndromes
Neurological Rehabilitation

Available Mon.-Fri. at Ruby Valley Hospital
220 E. Crofoot, Sheridan, MT 59749-9508 **406-842-5081**

HILARIOUS COMEDY CABARET
IN HISTORIC VIRGINIA CITY MT
THE BREWERY FOLLIES



May 27 to September 24!
SHOWTIMES 8PM & 4PM
RESERVATIONS RECOMMENDED
800-829-2969 EXT. 3 Tickets \$20

Mother's Day brunch success brings scholarship money

SUBMITTED BY JANET ALLESTAD
Virginia City Elks Lodge #390

The Elks Lodge met their goal to provide a second scholarship of \$500 next spring to a worthy senior high school student from the area. This spring, how-

ever, following the Mother's Day brunch, the Elks Lodge provides a \$500 Most Valuable Student Scholarship as part of their youth activities nationwide. Samantha Kimmey is this year's recipient.

The Most Valuable Student Scholarship program is open

to graduating seniors with the process beginning in late fall. It is available to seniors who enroll in a two or four year program of study after graduation. Local winners are submitted to regional and state for additional scholarship monies. National winners

can receive up to \$20,000 a year for four years.

If anyone wants to join in the effort to promote higher education for our youth and other activities for them, veterans and our communities, please contact an Elks member.

Ennis Arts Association announces 2016 scholarship winners

SUBMITTED BY VERN THIBODEAUX
Ennis Arts Association

The Ennis Arts Association is proud to announce the 2016

scholarship winners. There were two scholarships awarded this year; one is the members memorial scholarship for the amount of \$2,000 and one gen-

eral scholarship for the amount of \$1,000.

The winner of the members memorial scholarship is Katie Hall. She will be attending

Montana State University. The winner of the general scholarship is Rachel Ledgerwood. She will be attending North Central University.

WILLIE'S DISTILLERY
4TH ANNUAL
SPRING PIG PICKIN'



& WATER TO WHISKEY 5K RUN

SATURDAY, JUNE 4TH, 2016
NOON TO 6PM
FOOD, DRINKS AND MUSIC START AT NOON!
RUN STARTS AT 10:30AM! REGISTER AT ACTIVE.COM

MUSIC BY:
JACK CREEK COYLES & FRIENDS
FOOLS GOLD
DAVE WALKER BAND

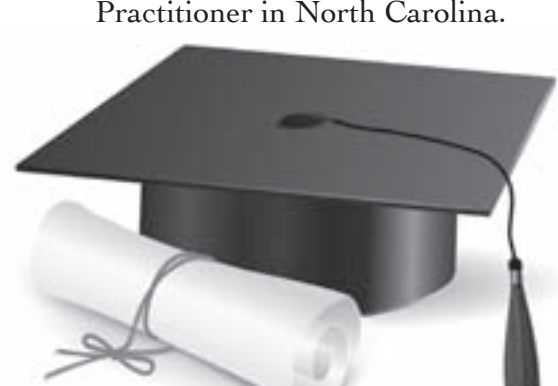
EVERYONE WELCOME - BRING THE WHOLE FAMILY!
RAIN, SNOW OR SHINE

PIG ROAST, LIVE MUSIC, DOOR PRIZES, FUN!

FREE!
312 E MAIN STREET, ENNIS. 682-4117
WWW.WILLIESDISTILLERY.COM



Chryal and Vern Robison are proud to announce that their daughter, *Summer Jewel Bender Wiseman*, (Ennis High School Class of 1996), has graduated with honors from the University of South Alabama with a Masters of Science in Nursing. She will continue her career as an Emergency Nurse Practitioner in North Carolina.



Bale of Hay Saloon
Poker Ride 8:30am & Parade 1:30pm
SUGAR DADDIES
Sat May 28th - 9:30pm
Montana's Oldest Watering Hole - Virginia City
www.baleofhaysaloon.com 406-843-5700

FIREWOOD
CUT TO YOUR DESIRED LENGTH,
8 FT. TRUCKLOAD. \$120/LOAD. ASK ABOUT 5 FOR 500 DEAL.
SW MT FREE DELIVERY; ALSO OFFERING SUMMER SPECIAL \$75.
CHIMNEY CLEANING AND REPAIRS
208-777-5408



NOTICE
JACK CREEK BENCH ROAD WILL BE CLOSED WEDNESDAY, JUNE 1ST FROM 7 AM TO 7 PM. ALTERNATE ROUTE IS JACK CREEK ROAD. IT WILL BE OPEN TO BIG SKY.

WE'RE ON THE WEB!
WWW.MADISONIANNEWS.COM

CHECK OUT OUR AWARD WINNING WEBSITE



Sheridan Schools receive \$10,000 grant

SUBMITTED BY LOIS TATE
Sheridan Schools

Sheridan has received a \$10,000 grant from the Turner Foundation's Community Youth Initiative, according to Rodney Stout, local coordinator of the Sheridan Turner Youth Initiative Committee, which sponsors the initiative in Sheridan.

"Turner monies have gone a long way in supporting activities that enrich the lives of the Sheridan youth," said Stout. "We are even more thankful for this opportunity during these difficult economic times."

The grants are earmarked for youth development in communities located near properties owned by R.E. (Ted) Turner, president of the Turner Youth Foundation headquartered in Atlanta, Ga.

As part of the initiative, each town was asked to form an adult-youth partnership and to identify priorities for determining how the funds should be spent. Funding typically supports such things as after-school, mentoring, recreational, community service and self-esteem building activities as well as creating more opportunities in job training and building entrepreneurship.

Farmers' Market

Join us for the first Farmers' Market of the season!

THE MARKET STARTS: JUNE 1ST FROM 5-7 PM
ELEMENTARY SCHOOL PARKING LOT

Come say hello and check out fresh local produce, baked goods, jewelry and more!

Get Results.

sales@madisoniannews.com

Wells Fargo Steakhouse
Steaks & Rustic Italian Cuisine

HOURS: { Dinner 5 p.m. - 10 p.m.

Dinner 6 nights a week
Closed Monday
Open through September
Live Music

Opening Friday, May 27

314 West Wallace | Virginia City | 406 843 5556
Reservations recommended

RALPH HAMLER
LICENSED SANITARIAN
Septic Application & Design
406-842-5788
Cell: 406-596-0437
Sheridan, MT
ralphhamler@gmail.com

BATS R US

ALPINE ANIMAL DAMAGE CONTROL
Live Trapping & Relocation
Squirrels - Skunks - Birds - Raccoons - Snakes
Bats - Beavers - Coyotes - Opossums - Otters
Odor Remediation - Attics & Crawl Spaces

Bruce Bartow (208) 521-4235

JD PUMPS & REPAIR
Bringing water to the surface for life

Don't get caught high and dry ...
Get your water system checked NOW!

JDPUMPS4WATER@AOL.COM
406.682.4997
Joel Davis

- Water System Analysis
- Well Inspections
- Constant Pressure & Conventional Systems
- System Design
- 24/7 Emergency Services

Locally owned and operated • 20 years experience

THE SHOVEL SPOON
"GROUND BREAKING"
Sheridan restaurant

good food. bad puns.

7:30AM - 8:00PM TUESDAY - FRIDAY

108 North Main, Sheridan
842-7999
theshovelandspoon.com

Where's Melinda?

STOP renting and take advantage of low interest rates for your home!!! Renting = No return on your money!! If your rent is \$400/month then you have wasted \$24,000 after 5 years; \$600/month - \$36,000 after five years; \$800/month - \$48,000 after five years
RENT NO MORE!!!!

- Double Wide manufactured home with possible owner financing - **\$99,900**
- NEW - never lived in 2 bedroom -
- 2 bath home with 2 car garage - **\$239,900**
- Cul'd'sac priv. - 3/2 w/ 2 car gar. & landscaping - **\$244,500**
- Need an in home office with it's own entrance? 3 bed/2bath + office - **\$249,000**
- Golf Course Town House - great rental history (leased until 10/1) - **\$265,000**

Call today for payment and financing information!

Melinda Merrill, Broker

BHHS BERKSHIRE HATHAWAY HomeServices Montana Properties

An independently owned and operated franchise of BHHS Affiliates, LLC. Berkshire Hathaway HomeServices and the Berkshire Hathaway HomeServices symbol are registered service marks of HomeServices of America, Inc. © Equal Housing Opportunity.

406.596.4288 | MELINDA.MERRILL@BHHSMT.COM

Re-Elect **DAVE SCHULZ**

DISTRICT 1 MADISON COUNTY COMMISSIONER

Smart Leadership
Protecting you and your future.

I have worked tirelessly on the behalf of Madison County. I will continue doing the same.

- 4th-generation native and lifetime resident of Madison County
- Successful at managing roads in District 1
- Informed about the challenges facing Madison County
- Well-known for being collaborative - I work effectively with ALL groups
- Recognize that making the right decision isn't always easy or popular
- Thorough understanding and successful management of Madison County's budget
- I am an honest, strong, independent thinker -- I represent Madison County NOT special interests.

Please vote on June 7!

Paid for by Dave Schulz for Commissioner
Nancy Schulz, Treasurer
Box 252 Sheridan, MT 59749

BECK PRODUCTIONS PRESENTS
The Illustrious
VIRGINIA CITY PLAYERS

Season Passes now available at Box Office for a discounted price!

THE LOUGER
May 28th - June 26th

Sleeping Beauty
June 28th - July 31st

The Legend of Sleepy Hollow
August 2nd - September 4th

Showtimes:
Tuesday, Wednesday, Thursday: 4:00pm
Friday, Saturday: 7:00pm - Saturday, Sunday: 2:00pm

1.800.829.2969 ext 2
www.virginiacityplayers.com

CONTINUED FROM PAGE B1

17th place: Madison Goettle, Ennis, 58.05

4x100 relay
First place: Ennis, 51.84
- Krysta Saunders, Josie Jenkins, Whitney McKittrick, Danika Philpott
Seventh place: Twin Bridges, 53.54 - Nora Humbert, Clancy Phillips, Megan Bausch, Michaela Madden

4x400 relay
Second place: Ennis, 4:14.89
- Josie Jenkins, Danika Philpott, Krysta Saunders, Wrenzi Wrzesinski
Fifth place: Twin Bridges, 4:22.47 - Megan Bausch, Savanna Stewart, Jessica George, Kailee Oliverson

Shot put
Third place: Janie Smart, Sheridan, 32-10.75
13th place: Blu Keim, Twin Bridges, 26-06.00
14th place: Stephanie Strong, Harrison, 26-05.25
16th place: Tionna Schwend, Sheridan, 24-06.00

Discus
Fifth place: Caitlin Klatt, Ennis, 94-11
Ninth place: Janie Smart, Sheridan, 89-09
17th place: Stephanie Strong, Harrison, 66-10
18th place: Hannah Roose, Ennis, 63-07

Javelin
Sixth place: Taya DeFrance, Harrison, 110-06
10th place: Mara Johnson, Twin Bridges, 99-04
11th place: McKenzie Shields, Ennis, 93-11
18th place: Whitney McKittrick, Ennis, 79-06

High jump
First place: Kailee Oliverson, Twin Bridges, 5-02.00
Fourth place: Jourdain Klein, Ennis, 4-10.00
Eighth place: Taya DeFrance, Harrison, 4-08.00

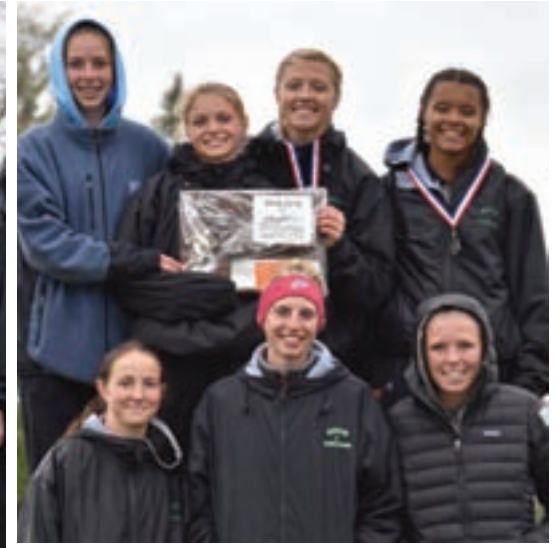
Pole vault
Third place: Danika Philpott, Ennis, 7-06.00
Seventh place: Ravyn Boyd, Ennis, 7-06.00

Long jump
First place: Taya DeFrance, Harrison, 16-02.50
Seventh place: Megan Bausch, Twin Bridges, 14-02.25

Triple jump
Second place: Jourdain Klein, Ennis, 33-07.00
Sixth place: Megan Bausch, Twin Bridges, 31-11.00
Ninth place: Krysta Saunders, Ennis, 31-01.25
13th place: Laryssa Jones, Twin Bridges, 30-00.00



BARBI HALVERSON WOOD FOR THE MADISONIAN
Top: The Ennis boys' team took first during the divisional meet.



BARBI HALVERSON WOOD FOR THE MADISONIAN
Top: The Ennis girls' team took second during the divisional meet.



BARBI HALVERSON WOOD/THE MADISONIAN
Bottom: The Harrison boys' relay team.



BARBI HALVERSON WOOD/THE MADISONIAN
Bottom: The Sheridan boys' relay team.

TERRANOVA
PESTICIDE APPLICATION SERVICES
Providing quality weed spraying for Beaverhead and Madison Counties.
Call, email or go online for a quote.
Jonathon Ashcraft 406-596-3475
terranovalmt@outlook.com www.terranovalmt.com

RANCH SORTING COMPETITION
SAVE THE DATE
MORE INFORMATION TO FOLLOW
**9 am Check-in
10 am Start**
Contact Brad Tank
406-577-6824
mtcowhorse@gmail.com
June 18 & 19
Ennis, Montana Rodeo Grounds

Gallatin Window Cleaning
Div. LudaL Ltd. Co.
Lic. & Insured
888-287-7478
www.galwc.com
gallatinwvc@gmail.com
P.O. Box 766
Ennis, MT 59729

Get Results.
sales@madisoniannews.com

Invitation
A GATHERING TO CELEBRATE BETSY SHIRLEY'S
LIFE ON THIS EARTH
SATURDAY - JUNE 4, 2016 • 1 PM - 4 PM
RODEO CLUB BUILDING, ENNIS, MT
Hwy 287 toward Virginia City
North Side of road, watch for sign.
There will be a short presentation to honor Betsy,
Followed by Potluck Lunch.
Bring a food dish, a lawn chair, a story to share.
For more information:
Sheridan: 406-842-5603, Betty Staley
Ennis: 682-7380, Kay Ericksen

ESCONDIDOS
Authentic Mexican Restaurant
Reservations accepted 682-5444
We host parties with advance notice
Veteran's discount 15%
50 N. Montana Hwy 287 • Next to Trenz Salon

Tobacco Root Contracting
Plumbing and Heating
PLUMBING:
New Construction, Remodels, Repair Work
HEATING:
Forced Air, Hot Water Boilers
Wayne Redfield PO Box 20 Twin Bridges, MT
(406) 596-1443 (406) 684 5233
Licensed & Insured

DRIVEN WEST PHOTOGRAPHIC ART GALLERY
NOW OPEN
NOW OPEN
VIRGINIA CITY www.milesglynn.com

David Perlstein
Always Buying Montana History
Specializing in Montana historical artifacts & memorabilia.
Advertising Signs • Ephemera • Maps
• Brewerianas • Stereoviews
• Photos • Yellowstone Park
• Mining History
406-579-3500
davidperlstein@gmail.com
MONTANAPICKER.COM

ENNIS PHYSICAL THERAPY
Specialized/Individualized patient focused care!
Patient care based on over 20 years of experience
Robert "BOB" Sahli, PT/AT/CLAT
OLDEST Healthcare Provider in the Madison Valley
Physical Therapist/Licensed Athletic Trainer
(ph) 406-682-3112 • (fax) 406-682-3132

TIRED OF DUST?
Dust Control for dirt roads and driveways
MOUNTAIN VALLEY DUST BUSTERS
Gary Cooper: 208-709-4112
Michelle Cooper: 208-709-4013

FAIRWEATHER INN
GRAND RE-OPENING
THURSDAY, MAY 26TH
the public is invited to join us for our Open House at the newly remodeled Fairweather Inn.
Refreshments provided.
305 W WALLACE, VIRGINIA CITY, MT 59755
406 843-5377 • aldergulchaccommodations.com

STAR RESTAURANT AND BAKERY
LOCATED IN HISTORIC NEVADA CITY MONTANA
IS OPENING FOR THE SEASON!
Starting Friday, May 27.
7am - 7 pm
Bakery open 7 days a week.
Restaurant is closed Tuesday & Wednesday
406-843-5777

GRAHAM DRILLING
SHERIDAN, MT
Water Well Drilling, Solar Pump Systems for Stock Water, Pump Sales Installation, Service & Repairs
Serving Residential & Commercial Customers in Madison County for over 30 years
QUALITY SERVICE AT A FAIR PRICE
Phone (406) 842-5214 or (406)682-5290
WWW.GRAHAMDRILLING.COM

Putting People Ahead of Politics.

WELBORN

MONTANA SENATE



- ENDORSED BY MONTANA RIGHT TO LIFE
100% voting record for family values.
- MONTANA FARM BUREAU GOLDEN
WINDMILL HONOREE
100% voting record.
Champion for agriculture.
- MONTANA TAX PAYERS ASSOCIATION
100% voting record for fiscal responsibility.
- MONTANA CHAMBER OF COMMERCE
98% voting record.
Champion of Business Honoree
- MONTANA PUBLIC EDUCATION CENTER
100% voting record.
Friend of education. Putting students first with more local control
- MONTANA CONTRACTORS ASSOCIATION
93% Voting Record.
Champion of good paying jobs.



Twice Honored by a coalition of sportsman, conservation and agriculture groups during 2015 session for balanced voting record to protect Montana's outdoor, ranching, hunting and fishing heritage.



Puckett



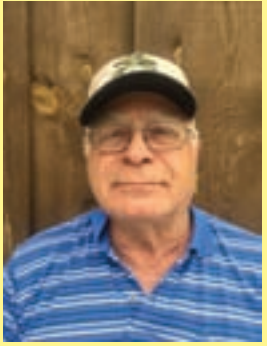
Statton

Local track athletes to head to nationals

SUBMITTED BY
HEATHER VAN PUCKETT
Twin Bridges

Taylor Statton of Harrison and Daphne Puckett of Twin Bridges have qualified for the NAIA National Outdoor Track and Field Championships in Gulf Shores, Ala., which will take place at the end of May. Statton, a 2012 graduate of Harrison High School and a 2016 graduate of University

of Great Falls, qualified with a javelin throw of 140'5". She is currently ranked eighth in the nation and has the UGF school record. Puckett, a 2014 graduate of Twin Bridges High School and a sophomore at the University of Great Falls, qualified in the hammer throw with a throw of 156'4" and in the shot put with a throw of 44'3.25" both of which are UGF school records.



Me again, sorry I missed the Twin Bridges forum, I probably wasn't missed. Wheel bearing problems on a quick trip to Texas and I didn't get back until midnight.

This ongoing issue: road access - County roads, roads accessing public lands, roads on the Interagency Travel Plan Map. The government guys usually tell you to get hold of your commissioner, and he says he'll get hold of you in a few days. One county road through a ranch locked for a few years after being sold. Commissioner finally gets road open after moving road at county expense, and road is very rough. No input from the community at all about placement of new road. Another road petitioned in 1897 and used since then, tracks are on the ground where it goes. 2009 property sells, new owner tries to petition road closed and is denied. New owner puts up gate and locks it. Commissioner from district #1 writes a letter to owner saying it needs to be removed and sends copies to Sheriff and County Attorney. Only after a "squeaky wheel" getting after them, is something starting to happen. 2009 to now!! Many times the commissioner was asking, get back with you in a few days!! I am for issues being handled in a timely, fair and equal manner!

Let's get better control of our county spending!
Vote - Thompson for county commissioner.

GET OUT AND VOTE!

~ Ellis Thompson

VOTE ELLIS THOMPSON FOR COUNTY COMMISSIONER DISTRICT 1 ON JUNE 7.

Paid for by Thompson for commissioner, Kathy Stone, PO Box 186, Alder, MT 59710

SURPRISE!



SUBMITTED BY DAVE DELISI
RUBY HABITAT FOUNDATION

A mink peeks through some grass at the Ruby Habitat Foundation's Woodson Ranch.



**YOU KNOW YOU DO IT.
NOW BRING IT
TO THE STAGE!**

the madisonian presents
LIP SYNC CHALLENGE

To register or for additional information, email ads@madisoniannews.com

save the date!
JUNE 17th • WELLS FARGO STEAKHOUSE
9 pm • details coming soon

DALE STEWART

MT SENATE DISTRICT #36

COMMITTED TO PUTTING U BACK ON TOP



Consistent - Honest - Dedicated

Serving my community for 18 years -
Committed to serving U in Helena

Committed to 2nd amendment rights -

Endorsed by the Montana Shooting Sports Association

Committed to strong Republican values



VOTE BY JUNE 7TH

www.stewart4u.com

www.facebook.com/stewart4you

www.twitter.com/stewart4you

dale@stewart4u.com | 406.865.0175

Paid for by Dale Stewart for SD36, Republican, PO Box 841, Dillon, MT 59725, Treasurer John Madary

CINCO DE MAYO AT THE MANOR



PHOTO COURTESY MELODY CLARK, MADISON VALLEY MANOR

Madison Valley Manor residents celebrated Cinco de Mayo with a huge party. The group went out in the decorated courtyard to enjoy margaritas and nachos. The group also enjoyed traditional music and dancing.

HAPPY 80TH BIRTHDAY PARTY FOR PEARL KILMAN




Date: 4 June 2016
Time: 2:00 pm - 4:00 pm
Location:
 El Western Conference Center
 Join us for Cake & Ice Cream

Beyond Words.

YOUR future is OUR future.

THE MADISONIAN. 682-7755
 Call to Subscribe or Advertise today.



A Veteran and leader capable of standing up and fighting for our Montana way of life.

CORE VALUES:
 Protecting Private Property Rights
 100% Pro-Life
 Right-To-Bear-Arms (NRA Lifetime membership)

RAY SHAW

SAVE THE DATE

FOR A VERY IMPORTANT DATE!

The Madison Valley Medical Center

Foundation

A MAD HATTER'S LUNCHEON & TEA PARTY FUNDRAISER

TO RAISE MONEY FOR MADISON VALLEY MEDICAL CENTER WOMEN'S HEALTH MAMMOGRAPHY PROGRAM



THE TIME, THE TIME, WHO'S GOT THE TIME?

WEDNESDAY, JULY 20TH, at 12:00 P.M.

FOLLOW THE WHITE RABBIT TO a WONDERLAND PARTY!

Madison Valley Medical Center Foundation
 P.O. Box 993 Ennis MT, 59729
 406-682-6641 | www.mvmcf.org

SHAW FOR HOUSE DISTRICT 71

ON JUNE 7, 2016

Working for everyone and for what's good for Montana.

A Common Sense Candidate

Paid for by Ray Shaw Candidate HD71, Ray Shaw Treasurer
 251 BIVENS CREEK RD SHERIDAN, MT 59749-9638

continental divide

BISTRO

47 Geyser Street | 1 mile North of Ennis on Hwy 287
 406.682.7600 | reservations recommended
 Seating 5:30pm - 8:30pm

CHEF ERIC TRAPP'S ICONIC CONTINENTAL DIVIDE BISTRO
 OPENS FOR THE SEASON: MAY 27TH - EARLY OCTOBER




PASSION for classic cuisine inspired by the best available seasonal local and regional ingredients is why locals and travelers from all over the world come back every summer.



Special treasures from the heart for everyone



SUMMER hours

M-SAT: 10:30 - 6

101 MILL ST. SHERIDAN MT
 PHONE: 406-842-7702
 KINDRED@3RIVERS.NET

Join Us for Our

SUMMER SEASON!

Beginning TUESDAY, MAY 10TH, 2016

Dinner Tuesday - Saturday 5pm to 9pm

Brunch Saturday 8am to 1pm
 Sunday 9am to 2pm

View Our Weekly Dinner Menu our website

Reservations Suggested

THE OLD HOTEL




Rustic Charm, Brilliant Cuisine in Twin Bridges...



101 E. 5th Avenue • Twin Bridges, MT
 www.theoldhotel.com
 406-684-5959

MENOPAUSE...NOW WHAT?

Let's clear up the confusion, review all the treatment options, and eliminate the symptoms.

Hosted by



Maura Davenport, M.D. & Tabitha Phillips, PA-C

4 Week Series in June
Every Wednesday from 5:30-7:30

June 8th
 Menopause Overview: Symptoms, Concerns & Management

June 15th
 Hormone Replacement Therapy with Patrick Holland, M.D.

June 22nd
 Healthy Eating & Body Wellness

June 29th
 Exercise, Pelvic Floor PT, Gentle Yoga

Healthy Refreshments will be provided with recipes!

Location: Lower Conference Room at Madison Valley Medical Center, 305 N. Main, Ennis, Montana
 Call 682-4223 for more information.

Get Results.

sales@madisoniannews.com

OUTPOSTEVENTS.NET

B14 Thursday, May 26, 2016

GO TO outpostevents.net FOR A COMPLETE LISTING OF EVENTS

WEDNESDAY MAY 25

Spring harvest, Ennis
The spring harvest event will feature a student grown sale, and silent auction at the Ennis school garden. Begins at 3:30 p.m.

FRIDAY MAY 27

Retirement party, Ennis
Retirement party for Molly Aagard at the Madison Valley Public Library at 11 a.m.

SATURDAY MAY 28

Music, Virginia City
The Sugar Daddies will play the Bale of Hay Saloon beginning at 9 p.m.

Film, Virginia City
"The Spirit of Sacajawea" film screening at The Elling House Arts and

Humanities Center at 7 p.m.

Poker ride, Virginia City
Spring horseback poker ride begins at 8:30 a.m. at the Bale of Hay Saloon. Call 843-5700 for more information.

Kickoff parade, Virginia City

Join in the Virginia City Season kick off parade beginning at 1:30 p.m.

Book signing, Virginia City

Doug White, author of the Jake Winter series, will be signing books Saturday and Sunday at Ranks Mercantile from 1-4 p.m.

SUNDAY MAY 29

Cowboy church, Nevada City
Every Sunday at 10 a.m. from Memorial Day weekend through Labor

Day.

Brunch, Sheridan
Brunch at the Philanthropy Building for all veterans and their families from 9:30-11:30 a.m.

MONDAY MAY 30

Memorial Day ceremony, Twin Bridges
Services at 10 a.m. at the Silver Star cemetery, 10:45 a.m. at the Point of Rocks cemetery and 11:30 a.m. at the Twin Bridges Cemetery.

Service, Ennis
Memorial Day services at 10 a.m. in McAllister and 11 a.m. in Ennis.

WEDNESDAY JUNE 1

Farmers' market, Ennis
Check out fresh, local produce, baked goods, jewelry and other crafts at the school parking lot from 5-7 p.m.

THURSDAY JUNE 2

Business after hours, Ennis
BAH hosted by My Home in Montana from 5-7 p.m.

FRIDAY JUNE 3

Concert, Virginia City
Mike Dowling will play the Elling House Arts and Humanities Center at 7 p.m. Call 843-5507 for more information.

Artist reception, Virginia City
Artist reception featuring Lodgepole John at the Elling House Arts and Humanities Center beginning at 5:30 p.m.

SATURDAY JUNE 4

Karaoke, Virginia City
Karaoke at the Bale of Hay Saloon beginning at 9 p.m.

Pig roast, Ennis
Annual pig roast at Willies Distillery beginning at 12 p.m.

Dinner, Virginia City
Virginia City chamber dinner and auction at 5 p.m. at the Wells Fargo Steakhouse. Call 600-2599 for reservations.

Discussion, Ennis
Gail Elser will discuss speech therapy: what it is and who and how it can help at the library beginning at 12:30 p.m. This will be a roundtable discussion with lots of time for questions.

SUNDAY JUNE 5

Gears for Beers, Virginia City

Mountain bike poker ride to benefit the Virginia City Rural Fire Department. Call 600-1199 for more information.

TUESDAY JUNE 7

Concert, Ennis
Jack and Kitty will perform at the library beginning at 10:30 a.m. Event is the kickoff to the summer reading program.

THURSDAY JUNE 9

Workshop, Twin Bridges
Conservation easement workshop in the Montana Room at the Twin Bridges High School. Runs from 9 a.m. to 12 p.m. Contact Abby at 544-6445 for more information.

SATURDAY JUNE 1

Book reading, Ennis
Allyson Adams will read from her book "The Rebel and the King" at the library beginning at 11 a.m.

FRIDAY JUNE 17

Relay for Life walk, Ennis
Join the movement beginning at 6 p.m. at Lions Park.

Lip Sync Challenge, Virginia City
Bring your skills to the stage for the second annual Lip Sync Challenge at the Wells Fargo Steakhouse at 9 p.m. Email Erin at ads@madisoniannews.com to register (please submit 3 song choices) or for more information.

SATURDAY JUNE 18

Brothel days, Virginia City
Lecture at noon and bed races beginning at 4 p.m. Music with Sam Platts and the Kootenai Three at 9:30 p.m. at the Bale of Hay.

Poker ride, Pony
Horseback poker ride

at the Sitz Angus Ranch begins at 8:30 a.m. For more information call 685-3541.

MONDAY JUNE 20

Camp, Ennis
Good Thymes Camp, week one. Camp will run everyday of the week from 8:30 a.m. to 4:30 p.m.

Presentation, Laurin
Come to the Robbers Roost for a presentation on Mike Mansfield by Holly Kaleczyc at 6 p.m.

WEDNESDAY JUNE 23

Meeting, Ennis
School board meeting in room #3 at 5 p.m.

SATURDAY JUNE 25

Music, Virginia City
The Comstock Lode will play the Bale of Hay Saloon beginning at 9 p.m.

Fishing derby, Twin Bridges

Fishing derby for kids 14 and under hosted by the American Legion Post 31 and United Veterans of Twin Bridges. Prizes, BBQ, and family fun begin at 10 a.m. at Lori's fishing pond.

SUNDAY JUNE 26

Pony trot, Pony
Pony trot 5K and 10K fun run. Start time is 7:30 a.m.



REGULAR WEEKLY EVENTS

MONDAYS

Commissioner's Meeting, Virginia City
Madison Co. Commissioners meet every Monday, unless noted, public welcome. 9:30 a.m. Annex Building

TUESDAYS

Madison County Mental Health Local Advisory Council, Virginia City
Meeting the first Tuesday of each month from 4:30 - 6:30 p.m. in County Commissioner's conference room in Broadway Annex.

Ennis Arts Association, Ennis
Meet on the second Tuesday of every month at 10:30 a.m. ennisartsassociation.org

Children's Story & Craft Time, Virginia City
Every Tuesday at 10:30 a.m. at the Thompson Hickman Library.

Movie Night, Virginia City
Movie Night at the Thompson-Hickman Madison County Library Every OTHER Tuesday night at 7:00 p.m. Please call 406-843-5346 to find out what is playing!

WEDNESDAYS

Tennis, Ennis
9 a.m. til 2 p.m., come play tennis at the Madison Meadows Golf Course. All levels welcome.

Open Sew, Ennis
Open Sew with the Quilt Guild- open to the public from 2-5pm at Madison Valley Public Library

Open Table Tennis, Pony 7 - 9 p.m.
For all ages and skill levels - Two Tables At the Pony School Info @ 685-3481

TOPS, Ennis
Weekly weigh-ins are at 8:30 am Meetings at 9:00 am. MVMC in downstairs conference room. Jeanne, 682-3299

Books and Babies, Ennis
Madison Valley Public Library, 10:30 a.m. 682-7244

Grief Support Group, Ennis
Everyone welcome. Meets every Wednesday, 5:30 p.m. Madison Valley Baptist Church

THURSDAYS

MV Women's Club FIRST THURS OF EA. MONTH
NO meetings June, July or August.

MV Manor Auxiliary Meeting, Ennis SECOND THURS OF EA. MONTH
1 p.m., Madison Valley Manor SunRoom

FRIDAYS

Tennis, Ennis
9 a.m. til 2 p.m., come play tennis at the Madison Meadows Golf Course. All levels welcome.

Story Time, Ennis
Pre-K to Grade 2, 11 a.m. Madison Valley Public Library. 682-7244.

Live Music, Ennis
Willie's Distillery hosts live music in the tasting room, 5:30 p.m.. See the weekly ad on this page for performers.

FRIDAY-SATURDAY-SUNDAY

Live Music - Norris
7 p.m. See the weekly ad on this page for weekly performers.

Christensen Rentals
Landscape • Lawn & Garden Home Improvement & Construction
Rototillers, Power Rakes & Aerators Backhoe, Skidsteer & Mini Excavator
Ask about the weekend rate - pick up on Saturday by noon and return Monday morning for a 1 day rate!
Call for availability!

Fall Hours: Mon.-Fri. 8:00 a.m. to 5:00 p.m. • Saturdays 8 a.m. to 12 p.m.
406-682-4748 • 201 MADISON ~ ENNIS, MT

MADISON COUNTY 2016 RELAY FOR LIFE - HEART OF RELAY
JUNE 17TH • Lions Club Park, Ennis • 6PM - MIDNIGHT

LUMINARIA BAGS!
\$10 each
HONOR SURVIVORS, REMEMBER THOSE WE HAVE LOST
Support Relay!
Available for pick up at Valley Bank & FMVB

Madison Valley Roofing
Formerly Savage Roofing Roofing Year Round!
Fully insured
FREE Estimates
Call 641-0059 or 682-7523

MADISON THEATRE 682-4023
115 Main St., Ennis, MT
Friday, May 27 - Sunday, May 29, 2016
CAPTAIN AMERICA: CIVIL WAR (PG-13)
Friday & Saturday 7:15 pm Matinee Sunday 4:00 pm
COMING SOON:
THE ANGRY BIRDS MOVIE (PG), X-MEN: APOCALYPSE (PG-13)
Evenings: Adults \$8 • Children (12 & under) \$6 Show time at 7:15 pm, Box Office opens at 6:30 pm
Find us on [Facebook] at Madisontheatreennis www.ennismovies.com

NORRIS HOT SPRINGS
MUSIC THIS WEEKEND:
Fri 5/27- Tevin Apedaile Contemporary Acoustic
Sat 5/28 - Russ Chapman Folk/Folks
Sun 5/29 Amber Ikeman Singer/Songwriter

HOURS:
Thurs-Fri-Mon: 4-10 pm
Sat-Sun: 12 noon-10 pm
Closed Tues & Weds

GRILL OPEN FRI, SAT & SUN
norrishotsprings.com
406.685.3303

WILLIE'S DISTILLERY
WILLIE'S DISTILLERY UPCOMING EVENTS:
502 E MAIN STREET, ENNIS 406-682-4117
WWW.WILLIESDISTILLERY.COM

EVERY FRIDAY WE HAVE LIVE MUSIC FROM 5:30 - 7:30 PM
COME JOIN THE FUN, LISTEN TO SOME GREAT MUSIC AND ENJOY SPIRITS WITH A WESTERN FLAVOR!!

FRIDAY MAY 20TH: YOU KNEW ME WHEN
FRIDAY MAY 27TH: DAVE HORTON
FRIDAY JUNE 3RD: LEFT FOR DEAD
FRIDAY JUNE 10TH: RUBY RANGE

ASK ABOUT OUR WEEKLY BOTTLING PARTIES!!