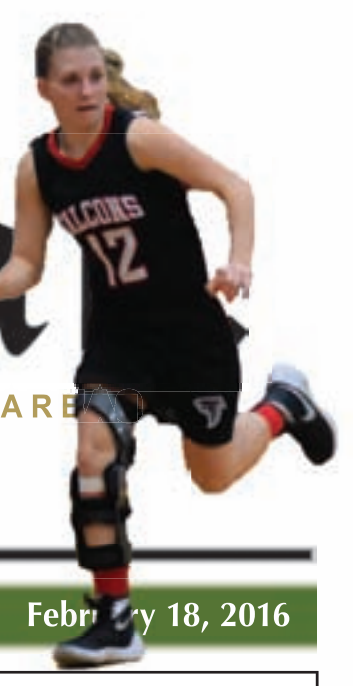


# The Madisonian

THE LOCAL NEWS OF THE MADISON VALLEY, RUBY VALLEY AND SURROUNDING AREAS

Montana's Oldest Publishing Weekly Newspaper. Established 1873



75¢ | Volume 144, Issue 17

www.madisoniannews.com

February 18, 2016

## INSIDE!

FIRE HOSE ROLL-UP, BROOMBALL AND DOGS IN A WHEELBARROWS!

MADISON COUNTY GETS IN THE WINTER SPIRIT IN VIRGINIA CITY DURING WINTERFEST.

SEE MORE PHOTOS ON A6



Photo courtesy Abby Thomas  
Peter Rossiter finishes his run at the fire hose roll-up race with a smile at Winterfest in Virginia City last weekend.

## Sheridan town council examines water system

Caitlin Avey  
THE MADISONIAN  
news@madisoniannews.com

Last month, the Sheridan Town Council received a preliminary engineering report from Great West Engineering regarding the city's water system. Some of the projects listed in the report included adding another water tank for more storage capacity, looping the water system on Bieler Lane and replacing a main on Water Street.

"The PER is the engineering company's view of what upgrades we need to our water system ... it looks at everything the city knows is deficient, plus other things, and evaluates it in their report," said councilman Bob Stump.

The council held a work meeting with Fred Philips, the engineer assigned to the project from Great West Engineering, three weeks ago to go over the PER and address questions and concerns. The biggest issue currently before the council is finding a way to tackle the projects without having to raise water rates for the town, and according to Philips, the town should be able to do so.

"It looks like it will be able to be completed without raising rates," he said. "We looked at the current budget and

analyzed what it would do to (water) rates but if (the town) took out a loan ... the town has just enough (to pay it back), with a little room to spare."

Essentially, with Sheridan's current budget if they can secure a loan and grant funding, according to Philips, the town should not have to raise water rates.

While not all the projects suggested in the PER will be worked on at this time, the town, along with Great West Engineering, has prioritized a few major repairs, along with some minor fixes to some city valves. The council will hold a public hearing before moving forward on any projects and in the meantime are working with Great West Engineering to finalize the PER.

"The most notable repair is on Water Street," said Philips, adding that the main is undersized. "There are a couple streets with old water lines that don't have adequate fire flow ... the rest is mostly updating old valves that are in bad shape or don't work at all."

The project will also include a leak study to help the town and Great West Engineering identify where there are water services and any leaks, but Philips said the main focus, for now, will be on updating the main on

Turn to SHERIDAN on pg. 2

## SIDEWALK TALK CONTINUES



Abigail Dennis/The Madisonian  
Lisa Roberts (l) presents a petition with 400 signatures to the Ennis Town Commission, requesting they revoke on part of the 'Y' sidewalk projects.

### Commission schedules work session to discuss alternative to 'segment three'

Abigail Dennis  
THE MADISONIAN  
a.dennis@madisoniannews.com

Close to 40 people showed up at Ennis town hall on Feb. 11 for another discussion about the Montana Department of Transportation's proposed project to install sidewalks around the 'Y' intersection in town.

Lisa Roberts, representing Madison Byways, presented the commissioners with a petition signed by nearly 400 people, requesting the commissioners "listen to the people" and revoke, approving the

part of the sidewalk project they voted down last month.

When the commission voted on the project on Jan. 14, they chose to break the project down into four segments and vote on each one individually. Segment one runs from Shedhorn Sports to Chowning Street; segment two runs from First Street to the south entrance of the Madison Valley Medical Center; segment three runs from Pearl Street to Fan Mountain Inn along the west side of the 'Y'; and segment four runs from Fan Mountain Inn to Madison Foods. The com-

missioners then unanimously voted in favor of segments one, two and four, but voted down segment three in a three to one vote - commissioners Brian Vincent, Audra Bourk and Brandi Palmerton voted against it, and commissioner John Bancroft voted in favor of it.

In the weeks since, Ennis community members started the petition requesting the commission reconsider their vote on segment three. Before Roberts presented the petition, Keri Kensinger, chair of the Ennis Planning Board, addressed the commissioners.

"In our last meeting, the planning board discussed the following: In response to public comment, it was discussed

by board members that the planning board make a recommendation to the town council regarding the Ennis Growth Policy and its goals pertaining specifically to infrastructure improvement, specifically the 'Y' intersection in town. Specifically, the growth policy was adopted unanimously by the council and it is a road map for the community," Kensinger said. "The 'Y' section was listed as a priority. The planning board made and passed a motion as follows: To make a recommendation to the Ennis town council to remind them of the 'Y' intersection as a priority goal listed in the

Turn to SIDEWALKS on pg. 2

## TECH ON DECK

### Ennis School Board approves election resolution for mill levy

Abigail Dennis  
THE MADISONIAN  
a.dennis@madisoniannews.com

On Feb. 10 at their regular meeting, the Ennis School Board unanimously approved an election resolution to run a mill levy in this year's election for the technology fund.

Currently, Ennis' technology budget is funded through a technology fund, federal fund, flex fund and general fund. "We want the money for technology to come out of a technology fund alone," explained Superintendent Jon Wrzesinski. "It would help us protect our flex fund and general fund."

For the past few months, a technology committee has been meeting to determine how much money the school truly needs for technology going forward. At the board meeting, Wrzesinski, trustee Craig George and technology

and business teacher Casey Donahue presented the committee's findings, and the board ultimately approved a resolution to ask district residents to vote on additional levies to operate and maintain the technology fund, though they did not yet vote on a specific amount.

In 2002, the voters approved

the \$36,000 yearly levy would go away if the new resolution passes this year, but if it fails, the \$36,000 will stay in place.

By April 1, the board must set the amount they will ask from the voters, Martello explained. Donahue said the technology committee plans to request \$231,866 -

levy this year. The resolution also states three trustee seats are open for election - seats held by John Scully and Maria Lake are three-year terms, and the seat held by Craig George is a one year term. Trustee Kris Inman seconded the motion and all board members - Coffman, Inman, Lake, Scully and George - voted in favor of it.

The board will set a figure to request on the ballot during their March meeting.

#### Other business

During the public comment portion of the meeting, two parents raised concerns with the school administration - saying some parents are afraid to address the administration and board with concerns for fear of backlash. One parent questioned the appropriate process of

Turn to ENNIS on pg. 2

"We want the money for technology to come out of a technology fund alone."  
- Superintendent Jon Wrzesinski

a permanent levy for \$36,000 for the technology fund, according to school clerk Ginger Martello.

"If this (new levy) passes does the \$36,000 go away?" board chair John Scully asked. Martello explained that

that figure will cover tech support, software, replacement and maintenance, professional development and tech salary and stipend.

Trustee Chad Coffman moved to adopt the election resolution for running a technology mill

**RUBY VALLEY** Member FDIC  
P.O. Box 417 • Twin Bridges, MT 59754 (406) 684-5678  
P.O. Box 587 • Sheridan, MT 59749 (406) 842-5411



THE VISA PREPAID CARD is a safe and convenient alternative to carrying cash. You'll never exceed your budget because you only spend what's on the card.

Once you load your card, you're all set. The card can be used anywhere Visa debit cards are accepted: Retail stores • Restaurants • Online • Phone and mail orders

TABLE OF CONTENTS

Local News-----A1-3&6	Columns-----B3
Opinion, Obits-----A4&A8	Comics/Games-----B4
Sports-----A5	Classifieds-----B5
Lifestyle-----B1	Public Notices-----B6
Health & Wellness-----B2	Calendar-----B10

Visit us online at [www.madisoniannews.com](http://www.madisoniannews.com)





### Conforming Mortgage Fixed Rates

30 Years - .000% Points  
**3.490% Rate 3.589% APR**

15 Years - .000% Points  
**2.750% Rate 2.925% APR**

Rates subject to change without notice. APR calculation is based on a \$200,000.00 loan amount with a 1% loan origination fee, \$125.00 processing fee, \$295.00 document processing fee, Mers fee \$11.95, \$15.00 flood determination fee, \$4.00 transcript fee, 15 days of prepaid interest and \*discount point fee as stated above.

### If you haven't enrolled for E-Statement delivery, the time is now.

Your statements will be made available to you at the touch of a button ... no more waiting for the mail and, most importantly, it's paperless!  
 Thank you for banking with [www.bankingonthefuture.com](http://www.bankingonthefuture.com)

### AUTO LOANS

AS LOW AS  
**4.5% rate**  
**4.879% APR**

Rates subject to change without notice. APR calculation based on \$20,000.00 loan amount with a \$149.00 loan fee, 48 monthly payments at 489.67 on approved credit.



Office: 406.682.4215 • Toll Free: 888.622.4215  
 213 E. Main St • Ennis, MT 59729

[WWW.BANKINGONTHEFUTURE.COM](http://WWW.BANKINGONTHEFUTURE.COM)

## B&E

CONVENTIONAL FRAME HOMES  
 COMMERCIAL  
 REMODELS & ADDITIONS  
 HAND-CRAFTED LOG HOMES

All phases of construction,  
 design and consulting

### CUSTOM BUILDING & DESIGN



e-mail: [bande@3rivers.net](mailto:bande@3rivers.net) | [www.bandeconstruction.com](http://www.bandeconstruction.com)  
 brad bullock 581-4117 | ken evans 490-2758 | office 682-7942  
 p.o. box 1444 Ennis, MT 59729

## Pinnacle Therapy

Counseling Services LCPC, NCC

(406) 404-9053

SERVING SOUTHWEST MONTANA

Children • Adolescent • Family Therapy  
 Crisis Support

Clinical Cognitive Behavioral Therapy

Extending a helping hand.

Gribben Consulting LLC

**Michael F. Gribben, EA**

Professional Tax Consultant

1807 Florence Ave.

(Across from Wayrynen's Funeral Home)

Butte, MT 59701

**406-490-9005**

Call for an appointment

## HARDY DRYWALL

FULL SERVICE DRYWALL, PLASTER & STUCCO

**406-596-3137**

### ENNIS from pg. 1

removing students from classes, and another mentioned the need for policies to stay consistent.

"If people have issues, encourage them to come forward," said George.

Since the comments were not part of an appeal process or a formal agenda item, the board did not take action, but Scully said the board should draft a letter addressing one of the parents, who had specific questions about why her child was removed from

a class for the semester, and if the correct process was followed.

High school principal Rich Borden informed the board that he has been looking at attendance policies at schools of different class schools in the area.

"Some schools set days, where if students miss X amount of days they go before a committee," Borden explained. "The committee is made up of administration and staff members and determine if the student gets credit or not."

Coffman asked if stu-

dents could lose credit for classes after missing a certain amount of days, regardless of their grade in the class.

"Some schools do it that way, some don't," Borden explained. "It's tricky – say a student misses 11 days but they have a 3.5 (grade point average) in the class. It would be hard to deny them credit."

Scully requested Borden form a committee and get input from teachers about what they would like to see in an attendance policy, then come

back to the board with the findings. Coffman volunteered to serve on the committee.

Scully asked for the board's approval in setting up a training in May for board members. In light of three trustee seats up for election this year, Scully said he thought the board members who are not up for election should get up-to-date about policies and more. The board unanimously approved Scully to set up the training.

### SIDEWALKS from pg. 1

town's growth policy and to reconsider a vote on section three of the sidewalk project."

When Roberts presented the petition, she explained there were 378 signatures as of the morning of Feb. 11, but more trickled in all day, bringing the total close to 400.

"Do not kick the can on this project," Roberts said. "This is a good project. This project has been engineered. It is totally funded. And don't trade it for something that we don't know. This hypothetical 'better project' that's been quoted has no plan and it has no funding ... You have a complete funding source for this. And these close to 400 people want this project now ... I am imploring you to really revote and approve section three."

### Public comment

The commissioners accepted public comment on the agenda item before moving into a discussion about a possible revote between them.

Community member Jennifer Doney was first to speak, saying she believes if the three already-approved segments of sidewalk are installed, it will increase foot traffic in segment three regardless of if there is a sidewalk there or not.

"It's obviously going to route and drive traffic on those newly built sidewalks and increase the foot traffic in section three, the contentious area," Doney said. "I've been a little bit disheartened by some of the passion we've had and some finger pointing and name calling, accusations of family ties and special interests because the truth is, we are a community family and it is important to all of us. There is not one of us who wants to endanger pedestrians or prevent cars getting to businesses ... Clash of ideas is where you get to the truth. It's okay to have a clash of ideas."

Chris Gentry owns a business along segment four of the project.

"I'd like to say the sidewalk in front of Madison Foods has been approved, but without (segment three) there is no connection to it," Gentry said. "Ennis is growing, whether we want it or not. If we don't grow, we die. We need to change; I think there are some positive ways we can change if we take a progressive and proactive approach to it ... I'm asking you guys to do the right thing."

Public comment wound on, with the majority of those speaking in favor of the segment three sidewalk – many people also expressed interest in hearing why some people oppose it and why three commissioners voted it down.

On the Fly coffee shop owner Aline Uber was the first

community member to express concerns with the proposed sidewalk along segment three, though her comments were backed up and added to by Don Lindeberg and John Heckler, who owns several businesses in town, including Sugar High.

"I don't know all the issues, but what I've heard from some of the businesses there is that they are concerned with the safety of that area in general," Uber said. "It's just an unsafe area. There is a lot of traffic in the summertime and it gets congested in there. They are worried that a sidewalk is just going to pull that many more people – which is what you want with a sidewalk – but it calls people to be there and congests it even more. I think that's one of the reasons there is opposition there."

Heckler added that the businesses along segment three met and are willing to sign easements to get sidewalks right in front of the businesses, instead along the roadway.

"But that makes it out of (MDT's) right of way, so it's not that 'free money,'" Heckler added.

Community member Craig Shirley urged the council not to be swayed by a "hypothetical perfect solution at the expense of a possible good one."

Public comments lasted more than an hour, with the majority of commenters speaking in favor of the sidewalks.

"Sidewalks are good. One of the reasons I'm so frustrated about this – and I'll tell you I'm frustrated – is because at the last meeting, this room was packed to the gills ... with person after person after person standing up in favor of not only this project, but specifically, section number three," said Robin Blazer. "That's why I'm so angry and so frustrated by this issue. This isn't about me – this is not about me ... it is about the people who cannot get from A to B by themselves on their own two feet. And if you all are going to sit up there, and you all are going to sit in here and tell me where my kids should and should not walk, shame on you. It's up to me. It's up to us to watch out for those who are less able to do things for themselves."

Heckler spoke again, emphasizing that he, as a business owner along segment three, thinks there is work being done toward a solution in the form of an alternative to the MDT's proposed sidewalk.

"I'm all for alternatives," Roberts said. "But recent history has shown that the town does not have the money. To throw away this project for reasons that can't even be cited or backed up by experts is really disheartening."

Sunni Heikes-Knapton added that all four segments of the

project worked together "beautifully" to benefit the town.

"There was beauty in the way the entirety of the project was put together," she said. "The segments work together to provide us the benefit that we as community members see as valuable, for safety and accessibility. The room was full of people supportive of that and we expressed that."

### Commissioner comments

When the public comment portion of the agenda item drew to a close, the commissioners discussed a possible revote.

Believe it or not, I think we're all kind of on the same page," Vincent said. "I think we agree we need to find out a way to get people from Pearl Street to the crosswalk down there by the hospital."

Vincent continued, giving a few reasons why he voted segment three down at the last meeting. Those reasons included how close the sidewalk runs to the highway, the town's maintenance requirements, safety and liability.

"I think (sidewalks) create the illusion of safety," said Palmerton, explaining why she opposed segment three.

"I'm concerned that during the summer months it gets a lot more crazy – somebody passing through could send their kid on that sidewalk from Fan Mountain (Inn) to Sugar High thinking that there is a sidewalk there and it is safe, but it wouldn't be safe. There's not an invisible barrier that says, 'this is safe'. Due to sheer volume and congestion of vehicles going through the 'Y' intersection during the summer months, adding pedestrians to the mix simply makes, in my opinion, it less safe."

Palmerton added that the commissioners are working with the business owners along segment three to figure out how to get the sidewalks "right in front of the businesses."

Bourk clarified that she is not opposed to a sidewalk along section three, but asked if it was possible to reroute it right in front of the businesses.

Commissioner Larry Pine, who was not present for the initial vote, expressed interest in the commission meeting to start discussing an alternative to the MDT's sidewalk because he said he thought it could be rerouted in a way that would make everyone happy.

The commissioners decided to postpone the possible revote and schedule a work session to look into the matter further. At the work session, the commissioners will discuss an alternative route to the MDT's proposed sidewalk along segment three, estimate the cost of the alternative and come up with potential funding sources, since it is unlikely the town

can afford to install a sidewalk in front of the businesses.

"If you can figure out a solution, great, but if you can't, take the one we have," said community member Carl Kautz. "You have five to seven days to figure it out. If you can't, go with what we have."

The work session was scheduled for Feb. 19 at 3 p.m. at town hall – it is open to the public, but the commissioners requested the public contact them prior to the session with suggestions and concerns.

The commissioners then scheduled a special meeting for Feb. 19 at 4 p.m. to vote on an issue unrelated to the sidewalks, though Vincent said if they feel confident with what happened during the work session, they may vote on the sidewalk at that time. An agenda for that meeting should be released by Feb. 17, but was not available by *The Madisonian's* press time Tuesday.

### Other business

During the public comment portion of the meeting, Blazer read a letter requesting the commissioners consider installing a 25 mile per hour flashing sign at the east entrance to town, near the bridge that crosses the Madison River.

"The flashing sign at the north entrance has been positive," Blazer said. "The east entrance has no visual indicators (to motorists) that they are entering a town. This would be a beginning measure ... a small step to take."

Dan McCauley from Great West Engineering attended the meeting to discuss a Community Development Block Grant planning grant to fund the rewrite of Ennis' subdivision regulations.

"We have to rewrite our subdivision (regulations)," Vincent explained. "We haven't done it in 15 years. We have to bring our regulations in line with both the county and the state."

Vincent asked McCauley for a reasonable timeline on getting Ennis' subdivision regulations updated.

"We will work with the planning board and it will take about a year to do it," McCauley answered. "We have to go through all of it and allow public comment. (The timeline) could be shortened by a few months if the planning board wants to meet more regularly."

Mayor Becky Vujovich recently handed in her letter of resignation – which the commissioners will accept at their special meeting on Feb. 19 – so the commissioners must appoint a new mayor. They currently have three applicants, according to Vincent. Commissioners Bourk and Bancroft volunteered to call those candidates and arrange interviews with them and bring their recommendation back to the council, who will then vote on hiring a mayor to serve until the November 2017 election.



Abigail Dennis/The Madisonian  
 The commissioners – from L: Brandi Palmerton, Larry Pine, Audra Bourk, John Bancroft and Brian Vincent – and town clerk Ginger Guinn listen to public comment about segment three of the sidewalk project. The commissioners ultimately decided to hold a work session before making a decision on the sidewalk.

### SHERIDAN from pg. 1

Water Street and looping the water line on Bieler Lane.

"Bieler Lane is not really a high maintenance issue but it doesn't have the flows you look for in a residential area," said Philips, adding that the cur-

rent main only feeds from one direction and does not currently extend to Tolson Lane.

The town will hold a public hearing at their regularly scheduled monthly meeting to hear comment and input about the PER, and in the meantime they have given Philips the go-ahead

to begin applying for grants. The March meeting will be held on the 14th at 6 p.m. at town hall.

### Other business

During the Feb. 8 meeting, Mayor Tom Shaffer reported to the council that the Skateboard Committee is

no longer looking to establish a skate park in Sheridan.

"They are moving their efforts to the Virginia City area," Shaffer told the council at the meeting. "They felt as if they had no support from the community and are moving on."



# MORE NEWS:



Photo courtesy Sara Decker  
Lane Poirier in sixth grade earns third place with his project, blow me away.

## SHERIDAN SCIENCE FAIR

### Students compete for a trip to regionals

Caitlin Avey  
THE MADISONIAN  
news@madisoniannews.com

Sheridan Schools held their annual science fair on Feb. 9 where students, grades first through 12, competed for a trip to the regional science fair in Butte on Feb. 23.

Volunteers from around the community asked questions and judged more than 45 projects to determine the top three placers for each grade, who were presented with medals. Students placing in the top three in grades fifth through eight will represent the Panthers at the regional science fair next week.

Sixth grade teacher Sara Decker has been in charge of

the Sheridan science fair for two years and said the students had since December to prepare their projects.

"The students were told the date of the (fair) and official paperwork was sent home right after Christmas," she said.

Decker, who has been in the school system for 12 years, said she encourages students to participate and to share what they have learned.

"I want them to know the 'science' behind their project and why it happened the way it did," Decker said. "In my mind, it is also important to make connections to the real world ... presenting and communicating is also important."

For Decker, seeing her

students learning and articulating what they know to the judges makes all the difference.

"Seeing that light bulb go off is incredible ... then I know they are learning!" she said.

The following kids will represent Sheridan at the regional science fair in Butte on Feb. 23:

Fifth-grade: Clair Haag (first); Henry Sutton (second); Bradyn Greco (third)

Sixth-grade: Jenna Nate (first); Jorien VerHow and Brooke Grow (second); Lane Poirier (third)

Seventh-grade: Mackenzie Fabel and Ruby Rossiter (first); Beth Hamilton (second); Desaray Tipton (third)

Eighth-grade: Madison VanHouten

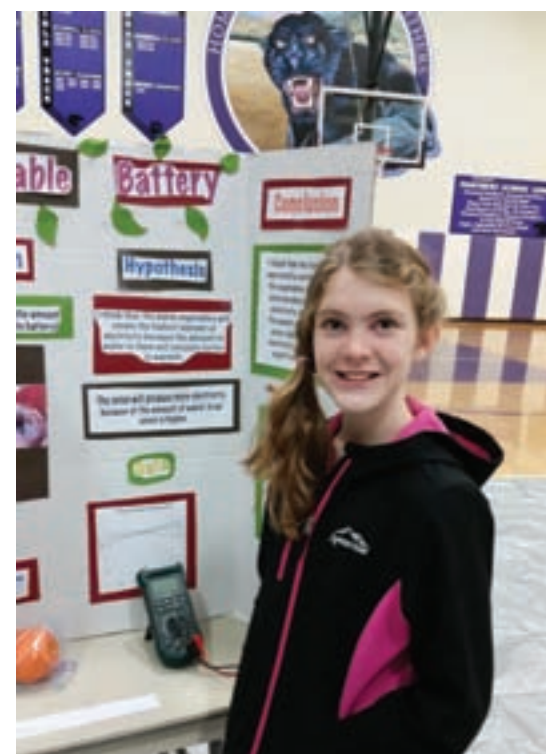


Photo courtesy Sara Decker  
Beth Hamilton, seventh grader, presents her second place project on shocking fruits.

## Sheridan School Board renews contracts with administration

Abigail Dennis  
THE MADISONIAN  
a.dennis@madisoniannews.com

Sheridan Schools had its mind on technology for much of this year, and according to Superintendent Mike Wetherbee, they are preparing to present their new technology at parent's night.

"The parents and community can come and see what we've been doing," he said.

The projects relate to STEAM (science, technology, engineering, arts and math), which the school implemented

into its curriculum at the start of the year, and include themed trunks that students check out in the library to work on things like microbots and more.

"The junior high kids will be working on building their own dragster cars and then we'll have a race where they can display them in the gym and compete," Wetherbee said. "And in our shop, we are close to assembling our plasma cutter router and that's huge."

Parents and community members will also be shown how students use 3D printers and more.

"The kids are fired up," Wetherbee said, referring to the technology-related updates in the school. "The kids out in the shop are out there just dancing to get a hold of the plasma cutter router."

### A new sign

At the school board's regular meeting on Feb. 9, Wetherbee informed the trustees that the new marquee sign they ordered should arrive in early March. The current marquee sign at the intersection of Poppleton Street and Main Street is out of date.

"It will be two sided and will be controlled from the school,"

Wetherbee said. "We're doing it as a cooperative project so the county emergency services and the town would have the ability to put messages up for the community if the need arises."

Next on deck facility wise involves the school's bus barn, Wetherbee added.

"We've had major flooding all winter in our bus barn," he said. "On the un-insulated side, it's like an ice skating rink in there. We need to improve that."

The improvements will likely involve insulating all the walls and installing a furnace to keep the bus barn from freezing.

### Renewing contracts

The board unanimously voted to renew Wetherbee's contract for three years.

"They wanted to go to three year so we aren't renegotiating every year," he explained.

In addition, the board also renewed principal Rod Stout's contract.

Board chair Bill Wood said the decision to renew the administrators' contracts was "pretty simple."

"They are doing a fantastic job for us," he said. "We've

been extremely happy. The grade school has come a long way with (Stout) and the curriculum keeps improving. (Wetherbee) has taken technology and run with it as far as getting new equipment and putting us ahead of the curve."

Want to see what Sheridan Schools has implemented technology-wise? Mark your calendar for parent's night on March 3.

## Harrison School Board submits transportation resolution

Abigail Dennis  
THE MADISONIAN  
a.dennis@madisoniannews.com

At their regular meeting on Feb. 8, the Harrison School Board addressed an issue with the school's boiler, started the initial steps in creating a technology plan and approved sending a resolution to the Montana School Board Association.

### Temperature control

Harrison School is currently heated with a boiler, which brings up a few issues, according to Superintendent Fred Hofman.

"We've had occasional boiler issues," Hofman explained.

"The system takes a long time to heat up because all the pipes have to heat up. We can't keep the ground floor warm, but the top floor of the building was roasting - we were opening windows and letting heat out."

As a quick fix, Hofman purchased baseboard heaters

for three classrooms on the bottom floor of the building.

"We can use that electric heat to supplement the boiler on cold days," he said. "It will help us be more economical with our dollars."

With the baseboard heaters up and running, the board turned their attention to getting a plan B in place should the boiler fail.

"It went out a year ago, but we were having record warm temperatures so we were able to keep the school open just using space heaters," Hofman said. "But we keep having near-disasters with the boiler. It went out over Christmas break this year. If it goes out in January and it's cold, what would we do?"

Hofman said he thinks the solution is to purchase more baseboard heaters for the rest of the classrooms.

"With one or two baseboard heaters in every main classroom, we could get by without shutting the school down," he said. "We

can just use that electric heat."

At the January board meeting, the trustees asked Hofman to solicit bids for installing baseboard heaters in the rest of the school.

"We haven't gotten all the bids in yet, so we just tabled it this month," Hofman explained. "We may even wait until summer to do it."

### Taking technology into the future

A few years ago, Harrison Schools received a major technology update.

"We were using computers that were handed down from the prison system and (the Department of Public Health and Human Services)," Hofman said. "Basically, state agencies would get a few years of work and we would get their hand-me-downs."

When the school wanted to update that out-of-date system, Hofman said the board went to the taxpayers and requested that

funds be transferred from the bus depreciation fund to the flex fund for technology expenses.

"The voters did that and we completely gutted our technology infrastructure," he said.

"Teachers got new computers and iPads, we got three brand new computer labs, we have decent Internet speed. But we can't do that again. We need a plan going forward because we can't do a big \$80,000 fix every few years."

The school does not yet have an outlined technology plan moving forward, but Hofman said a committee is being formed to remedy that. The committee will include Hofman, trustee Liza Hall, teachers Andi Christensen and Dylan Abraham and students, parents and community members.

"If we wait two more years, we would end up with a price tag we couldn't afford again," Hofman said. "The committee will start the discussion about what we should do and

bring it back (to the board)."

### A proposed resolution

The board unanimously approved submitting a proposed resolution to the MTSBA - the resolution suggests giving school districts the option to get reimbursed for running bus routes if they use smaller vehicles than buses, like vans or suburbans.

"The way the state finance law is set up for schools is that you get reimbursed by the state for transportation, but it's based on the size of the bus," Hofman explained. "Why do we have to send a big bus on a route if we are only picking up three kids? If we send our school van, we don't get reimbursed."

Hofman presented an example of why the resolution could make a difference for schools like Harrison.

We had a bus route that cost us \$52,000 to run," he said.

"About 40 percent of that was reimbursed by the state, but the rest was paid for locally by county and local taxpayers. We only picked up three kids. It was a colossal waste of resources. The law does not allow us to buy a school van to go pick them up - but if it did, we could have run that (bus) route at a fraction of the cost."

The proposed resolution will be presented to the entire MTSBA at its annual conference in October, where MTSBA members will vote to sponsor the resolution and take it to the legislature, or not, Hofman explained.

"It doesn't change the funding formula for big districts," Hofman said. "But for a school like Harrison, it would make far more financial sense for the taxpayers of Montana and the Harrison district to say, go buy a new van and get reimbursed, rather than spending so much more money on a bus."

## LONG LASHES AND WOBBLY LEGS

*Hi readers,*

We're in the thick of one of my favorite times of the year - calving season! Mike works as a night calver for two straight months, and whenever I have a free evening I can't stay away from the barn.

I get the perks of Mike working as a night calver. He does the hard work, is up long hours and exposes himself to the elements - cold, wind and snow. Wind may just be the worst one. On the other hand, I get to roll out to the barn, hide out in the shed and bottle feed any babies that need extra help. That's my favorite part of calving season. I love helping the little ones find their feet and figure out what a bottle is. After they've had a few goes at it, they know the drill and hop up when they see you coming.

As much as I enjoy winter, by the middle of February, I start to yearn for spring. In my mind, the end of calving season is the beginning of spring - driving around Madison County and seeing the countryside littered with moms and babes helps me conjure images of green grass, blue skies and new life. Spring.

From my seat, calving season is all about cute babes with long lashes and wobbly legs. But I get to live in a fairytale - I don't have to deal with the harsh realities of the ranching world. When everything goes to hell because it's 5 degrees and the wind is howling, I can go home to my cozy bed. I'm not the one out in the elements, giving it my all to bring calves into the world. Ranchers have an often thankless job. Like many, their work lives don't start at 8 a.m. and end at 5 p.m. Work is their life, and I have a lot of respect for that.

As for the reality of calving season and what it means for ranchers, Rebecca Ramsey, Ruby Watershed Coordinator, said it better than I can in a column earlier this month. Here's what she wrote:

"The ranchers then have a big job ahead of them once calves start coming. They keep meticulous records of when each cow or heifer is bred (A heifer is a female bovine who has never had a

calf). All the pregnant ladies need to be watched, especially the first time heifers, so they are grouped by due dates and kept close so the rancher can check on them multiple times a day. The ranchers are at the ready to lend a hand if needed, and to treat the umbilical stump to prevent infection and tag their ears for identification.

Our ranching neighbors go to great lengths to keep every baby alive. They may be out there with towels to help the cow as she licks a calf dry. Or the calf may be brought indoors ... and put on heating pads, electric blankets, put under heat lamps or even have a hair dryer taken to them! And if a calf is found later that has gotten very cold, they are sometimes brought right into the family bathtub to be submerged in warm water to bring up their body temperature! (Then fully dried with all the aforementioned options before going outside with momma again.)

Once a calf is born and dried, next it has to stand and suckle within an hour or so to get the important, nourishing colostrum - the first milk that is vital to their immune system. If they are kept too long from their mother, or if they have a mother that rejects them, or they have a hard time standing and nursing on their own, the rancher will use a milk replacer formula to bottle or bucket feed the calf.

Not only do ranchers try to protect their newly born stock from cold and ensure they are nourished, they also have to ward off the scavengers such as magpies and ravens (who literally sometimes try to pluck their eyes out), and protect them from predators such as coyote, wolves and domestic dogs ... Particularly when the calves are very young."

What Rebecca wrote really resonates with me - sometimes I have to remind myself that calving season isn't all fun and games.

I'm fortunate enough to get to revel in the excitement of it all without the effort and anxiety that comes with helping calves survive. Thanks to Rebecca's writing, and many conversations with Mike, I have a renewed appreciation for what our ranchers do.

So take a drive and watch the calves frolic and play, but remember

all the hard work that goes in to bringing them into the world.

*Abigail*

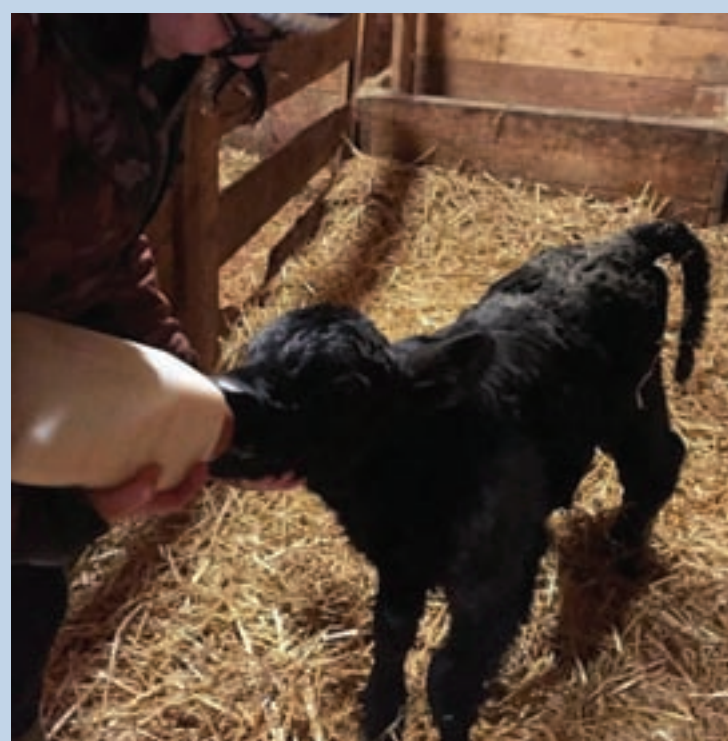


Photo courtesy Mike Elliott  
Babes and bottles - my favorite!



# OPINION

## The Madisonian.

Established in 1873

(USPS 325-340)

Montana's Oldest Operating Weekly Newspaper

### Owners/Publishers:

Susanne Hill & Erin Leonard

Editor: Abigail Dennis

### Director of Sales & Marketing:

Susanne Hill

Art Director: Erin Leonard

Staff Writer/Projects Assistant: Caitlin Avey

### Contributors:

Keith Axberg, Gen Pierce, Art Kehler, Stacy Gatewood, Kelley Knack, Nancy Nesbit, Tammy Wham, Christopher Mumme, Matt Hill, Gerry Mooney, Ken Hall

## ENNIS, MONTANA

### - Madisonian Editorial Policy -

Editorials are intended to acquaint our readers with the Editor's viewpoints on matters of public importance. Guest editorials and letters from readers (Letters to the Editor) reflect the opinion of the writers and do not necessarily reflect the opinion of the Editor or the staff of *The Madisonian*.

### - Press Release Policy -

•The *Madisonian* staff will give all press releases full consideration, but ultimately retains the authority to determine whether or not to publish releases.

•Content must be factual and objective.

•Content must not contain advertising language (such as "call now," "to buy tickets for," "now showing,") or include pricing.

•Items of a general business interest are appropriate for advertising—see advertising policy and current rates.

•Content must not be derogatory to competing companies or organizations.

•Content may only be submitted and published once.

•There are no guarantees that press releases will be published.

•The *Madisonian* may edit submissions for grammar and content.

•The *Madisonian* reserves the right to make all determinations relative to the above policy.

### - Letters to the Editor/Readers Speak Policy -

The *Madisonian* encourages the opinions of readers on public issues and matters of local concern. Letters must be close to 350 words. Please include the writer's name, address and phone number. The *Madisonian* reserves the right to edit content for grammar, good taste and libel. We also reserve the right to reject or delay publications.

Announcements and letters of a commercial nature will not appear in this column.

### - Display & Classified Advertising Policy -

The *Madisonian* accepts most advertising, but may turn away any advertisement for any reason. It is up to us to decide on placement and content acceptability.

The advertisements in this publication are not necessarily the opinion of or supported by *The Madisonian*.

Please note: Our client information is confidential.

### ~ Subscription Rates ~

In-State - \$35.00/1 year or \$60.00/2 years • Out-of-State - \$45.00/1 year or 75.00/2 years (e-Edition complimentary with print subscription) • \$30 - e-Edition only • \$40 - 6 mos. print/1 year e-Edition

Postmaster: Please, Send Address Changes to:

The Madisonian, P.O. Box 365, Ennis, MT 59729

Phone 406-682-7755

Toll Free 1-888-238-7849

email: editor@madisoniannews.com

### HOURS OF OPERATION:

Monday - Friday ~ 9 am - 5 pm - Call ahead as we're short staffed and want to make sure we are available to you!

Any submissions to our paper, including photos or content, may be used in any of our print and digital products.

## NEWS & ADVERTISING DEADLINE

5 p.m. - Friday

## WE OFFER COMPLIMENTARY OBITUARIES

Guidelines: Must be 450 words or less and one photo. (Otherwise, it will be 25 cents per word thereafter)

Please call or email:

682-7755 or

editor@madisoniannews.com

The *Madisonian* does not enforce the viewpoints or statements of those who submit letters to the editor. Please do your own research about individuals and issues so you can form the best opinion(s) for yourself.

## Thank you for love and support

Dear Editor,

We would like to thank all the crew at the Madison Valley Medical Center so very, very much for the love and care they gave Ed. The gals could always get a smile from him.

A big thanks to Dr. Marks for his care of Ed and compassion to us, Ed's family.

Love and God bless to you all,  
Merrilyn, Gerry, Holly, Scott and Stephanie

## OBITUARIES

### Charles Edward Clark

June 30, 1922 - January 12, 2016



Ed took his final float trip to the great fishing grounds on Friday, Jan. 12. He loved to fish, hunt, snowmobile and golf with his friends and family, and now he is enjoying all of those pursuits.

Charles Edward "Ed" Clark was born June 30, 1922, to Wil-

liam (Bill) and Emily (Woods) Clark in Ennis. He attended Ennis schools and graduated in 1940. He enlisted in the Army with his brothers and served in World War II in England, France, Belgium and Germany. He was honorably discharged as a sergeant in 1944. He served overseas with his brothers but all were sent home separately in case a troop ship was attacked.

Ed married Merrilyn (Daems) in 1951. She survives, as does his son Jerry (Holly) Clark, grandson Scott (Stephanie), great grandson Hunter and step-granddaughter Genesis. He is also survived by sister-in-law Lois (Guy) Miller, nephews Dan (Dawn) Miller,

David Miller, Ray (Diane) Clark, Chuck Clark, Doug (Sharon) Clark, nieces Tammie Clark and Mary (Bob) Scharr.

He was preceded in death by his parents, sister Leona, brothers Bunk, Clarence and Gib, nephews John Clark and Bobby Ketchigman.

Ed spent many years guiding on the Madison River with son Jerry, nephew Dan Miller and later with grandson Scott Clark. Among his many clients were company parties from Shell Oil, ConAgra, In and Out Burgers and numerous other fishermen from all over the country who became very good friends.

Ed retired in November 1979 after 20 years of govern-

ment service with the U.S. Fish and Wildlife Service and the U.S. Post Office. He taught hunter's safety for 20 years and was a 50 year member of the Masonic Lodge.

A highlight for Ed was playing in a golf tournament in California with comedian Tim Conway. He did not get to spend much time with great-grandson Hunter but affectionately called him "Tuffy." He loved spending time with family in the outdoors.

A memorial service will be held later in the spring. Donations are preferred to the activities fund at the Madison Valley Manor or a charity of your choice.

### Angela Christine Houtz

October 20, 1976 - February 9, 2016



Angela Christine Houtz passed on to her eternal home in Heaven on Tuesday, Feb. 9, 2016, at Kalispell Regional Hospital with her family at her side.

Angela was born on Oct. 20, 1976, in Missoula to Earl and Karla Houtz. Though her birth was normal and without incident, her life and the lives of her family were drastically altered for 39 years when she began suffering intense seizures at four months of age. For many years, her seizures were not able to be controlled for more than short periods of duration, and began taking their toll on her mental and physical abilities. Treasured are those years before she turned two years old when our little Angel could sing four verses

of "Amazing Grace," which remains our family anthem.

Angela attended special education classes in various Kalispell schools until she reached 22, enjoying the focused attention she received by so many caring teachers. One of the skills that she did learn well was how to drink through a straw, quite an achievement for that period of her life.

Angela spent her entire life in the care of her parents who were assisted by loving and caring medical personnel, among whom were Dr. Wallace Wilder and Dr. Mark Sorenson in her earlier years, and Angela's physician and friend, Ann Bukacek, and neurologist, Bret Lindsay, in Angela's later years.

Angela enjoyed hugging everyone who came close to her. Going on walks with her parents was fun for her, but even more exciting for Angela was for Dad and Mom to take her for bike rides while she sat in her bike trailer behind them. Another of the highlights of her life was to go camping with her family, especially at Logan State Park. So very special to her also was attending church on Sunday morn-

ing where she would hold on to her Dad during the praise and worship service, often humming in only the way Angela could.

Though her family could not foresee the future at her birth, Angela Christine was named so appropriately - an Angel from Christ. Those that knew her could easily tell that she radiated the unconditional love of God. Every member of Angela's family can attribute their relationship with the Lord to having known their precious Angela. Her friends and family grieve with their loss, but are rejoicing in the knowledge that in her new home she is now talking, walking and singing - even louder than she used to squeal!

Angela is survived by her parents, Earl and Karla Houtz; sisters Jeni LeGasse and husband Eric, Laura McIntosh and husband Gary; nieces and nephews Jeffrey and Shanae Tritten, Joshua and Jessica LeGasse, Jordan Tritten, Jonathan and Moriah LeGasse, Jaben Tritten, Morgan McIntosh, Julia Tritten, Jade LeGasse, Tyler McIntosh, Ashlyn McIntosh, Justine LeGasse and Shanae McIntosh; great-nephews

and nieces Jett Tritten, Archer LeGasse, Haylee Tritten and Scarlet Sportsman; plus uncles, aunts and cousins, all who made her life so rich and full of reciprocating love. Also surviving Angela is her church family at Adventure Church of Kalispell, and her pastor Jim Davey.

Angela was preceded in death by her paternal grandparents, Earl and Marie Houtz of Great Falls; her maternal grandparents, Lowell and Laura Gilman of Alder; and uncle Glenn Gilman of Denver, Colo.

Angela's memorial service was at 1 p.m. on Monday, Feb. 15, 2016, at Adventure Church, 348 Second Street West, Kalispell. Interment was the next day at Taylor Cemetery near Alder, where she was laid to rest next to her maternal grandparents.

Memorials in Angela's name may be given to Hope Pregnancy Ministries, 1281 Burns Way, Kalispell, MT 59901. Contributions to the family may be sent to the Angela Houtz Memorial Account at any Whitefish Credit Union office.

Johnson-Gloschat Funeral Home is caring for the family.

### Robert M. Lee

October 2, 1927 - January 28, 2016



Robert M. Lee, renowned automobile and antique arms collector, explorer and conservationist, dies at 88.

Mr. Lee owned Windy Water Ranch in Ennis and Cromwell Island on Flathead Lake.

Robert Morton Lee passed away Jan. 28, 2016, in Reno, N.V., surrounded by friends and his devoted and beloved wife, Anne Brockinton Lee.

Mr. Lee was born in Woodmere, Long Island, N.Y., on Oct. 2, 1927. He was taught a love of nature and the great outdoors by his parents, Dr. William F. Lee and Sally W. Lee.

He graduated from Oakwood Friends School in Poughkeepsie, N.Y., and attended Lehigh University in Bethlehem, Pa., majoring in engineering and business. He

served in the United States Army before the Korean War and was stationed in Alaska.

Mr. Lee was a "renaissance man" who presented a multifaceted talent to the world. He turned his hand to many things and rarely failed. He was a premier fly-tier; successful builder-developer; excellent rifle shot; dedicated fly-fisherman; safari outfitter and professional hunter in Africa; brilliant designer and manufacturer of a multitude of outdoor equipment, fine luggage and clothing (Hunting World®); a patron of the arts; a merchandiser par excellence and marketing wiz; an author (of many books); an explorer and natural scientist with museum accreditation; and a classic car and antique gun collector nonpareil. During his life, his inquisitive nature, keen intelligence and sense of fearless daring carried him ever further, pushing back horizons and challenging the new or unthinkable.

At age 14, Bob Lee designed a unique telescopic sighting, called the Lee Mount, and at age 17 designed and manufactured a range of several ultra-high-velocity rifle cartridges, such as the .358 Lee Magnum and

the .424 Lee Magnum - each notably listed in Volume I of P. O. Ackley's "Handbook for Shooters and Reloaders."

Lee was one of the first Americans to have a hunting concession in Africa (Lee Expeditions, Ltd.) and the first PH to open Portuguese Angola to foreign hunters. He was a conservationist long before it became fashionable. While living in Angola in the early 1960s, he was instrumental in obtaining government protection for lion, cheetah, black rhino and their habitats. He designed the first ecologically sound wildlife management program in Africa with the then Portuguese Provincial government (Angola) to counteract the decimation of the big-game population by over-hunting and poaching. The result: there was more game there when he left than when he arrived! This was a cause Mr. Lee championed around the world during his lifetime.

To quote Mr. Lee from his first book, "Safari Today (1960)": "It is the hunter who

loves the game, for the game is his life and sport, and since the Middle Ages and before, it has been the hunter who has saved the game and fought those who would destroy it - whenever and wherever he could."

In 1965, with the outbreak of the civil war in Angola, Lee returned to New York and founded Hunting World®, a luxury luggage, leather goods, outdoor clothing and sporting specialties company. His products were designed to his exacting specifications and mercilessly field-tested. He developed a nearly indestructible lightweight material, impervious to heat and cold, which he called Battue®.

Between 1980 and 1984, after six years of negotiations with the government of the People's Republic of China, Mr. Lee became the first Westerner to gain access to and lead three scientific expeditions into the rugged Tien Shan mountains and Chinese Pamirs - known as "The Roof of the World" - where he rediscovered the fabled Marco Polo sheep, *Ovis ammon poli*,

Obituaries continued on page A8



# & SPORTS:

## FALCONS VS. PANTHERS

### Falcons continue winning records; look forward to District tourney



Caitlin Avey/The Madisonian  
Senior Monty Tipps contributed eight points for the Falcons during their final home game against Sheridan.



Caitlin Avey/The Madisonian  
Panther Alexis Woirhaye drives around senior Falcon defender Madyson Beagley.

Caitlin Avey  
THE MADISONIAN  
news@madisoniannews.com

The Twin Bridges gym was packed on Feb. 13 as the Falcons hosted their rivals from down the highway for senior honor night. The Panthers and Falcons battled it out for their last regular season games before heading to the district tournament in Manhattan Christian on Wednesday, Feb. 17.

As a sea of red and black dominated the gym to cheer on the home team, the red and black also dominated the court, as both Falcon teams defeated the Panthers.

#### Girls basketball

The games started as the ladies took the floor with the Lady Falcons hoping to defend their undefeated season record. The five senior Lady Falcons started the game off, controlling the court from the get-go.

The Lady Panthers did, however, manage to put nine points on the board in the first quarter, bridging the gap to seven points going into the second. Although the Panthers were scoreless in the second quarter, they came out of the locker room after halftime, ready to battle.

Lady Falcon Cassidy Wetzel scored first in the second half as she drained a three, stretching

out the lead, but senior Panther Alexis Woirhaye answered back with a shot from behind the arc – good for three points.

Woirhaye led the way for the Panthers, ending her night with 13 points. Tionna Schwend acted big playing post and contributed four points, while Janie Smart and Destiny Fabel each had two.

“I was impressed with their confidence and tenacity against the Lady Falcons,” said head coach Wendy Fabel. “They have a lot of courage and integrity, and it takes strong kids to keep suiting up with odds and numbers stacked against them year after year.”

The Panthers lost to the Lady Falcons 21–56.

Wetzel and sophomore Kailee Oliverson led the Lady Falcons for the night with nine and 10 points, respectively. Seniors Madyson Beagley, Jessica George and Megan Martin also got on the board.

The Lady Falcons are seeded in the number one spot as they head to the district tournament.

#### Boys basketball

The young Panther team is starting to come into their own with each game they play.

Led by junior Tracer Horn, the Panthers opened the game nipping at the Falcons’ heels. While Falcon Tristan Eggers controlled the tip, Horn was quick to an-

swer back, netting an easy three pointer. Horn put up 12 points in the first quarter and ended his night with 31 points total.

The Panthers played aggressively throughout the first quarter and managed to take the lead by one with four minutes left in the first. Although a little rattled, the strong Falcon team was able to capitalize on Panther fouls and take back the lead.

With a full bench of strong shooters, the Falcons soared ahead in the second as the Panthers got into some foul trouble.

Freshman Moxon Lee and sophomore Ben Larsen guided the Panthers through the second quarter adding three points before teams broke for halftime.

“The score did not really reflect the game as Sheridan played really well,” said Falcon head coach Josh Keller.

The Falcons continued to shoot well and most of the bench was able to contribute points to help beat the Panthers 72–45.

The Falcons were led by Eggers who ended the night with 24 points, while Ethan Orrin had 11 and Monty Tipps, Daniel Krueger and James Bendon each had eight.

The Panthers were led by Horn with 31 points while Lee had eight and exchange student Moritz Remmert finished with three.

## DISTRICT BASKETBALL

Madison County basketball teams will travel to Manhattan Christian this week for the district basketball tournament. For a bracket, visit [www.mhsa.org](http://www.mhsa.org).

### GIRLS:

- Sheridan plays White Sulphur Springs Wednesday at 4 p.m.
- Twin Bridges plays the winner of a play-in game Thursday at 9 a.m.
- Ennis plays Harrison-Willow/Creek Thursday at 10:30 a.m.

### BOYS:

- Harrison/Willow Creek plays Lima Wednesday at 5:30 p.m.
- Sheridan plays Gardiner Wednesday at 5:30 p.m.
- Ennis plays the winner of a play-in game Thursday at noon.
- Twin Bridges plays the winner of a play-in game Thursday at 7:30 p.m.

## PANTHERS VS. MUSTANGS

### Sheridan welcomes Ennis to Ruby Valley, unable to topple Mustangs

Abigail Dennis  
THE MADISONIAN  
a.dennis@madisoniannews.com

Mustang and Panther fans packed the Sheridan gym on Feb. 12 for a cross-county match up that ultimately had both Ennis teams walking away with wins, despite Sheridan’s best efforts.

#### Girls basketball

It took the Lady Panthers the first half to find their rhythm, but they started firing off shots and making impressive steals after the half.

Sheridan’s Amanda Grow put the Panthers on the board with a three pointer in the first quarter, but the Mustangs’ starting line up was able to find the basket for 22 points to give them a commanding lead in the first eight minutes of play. The second quarter was much the same – Ennis scored 14 points to Sheridan’s five, and the teams entered the locker room with the Panthers trailing, 8 – 36.

Halfway through the third quarter, a slick pass to Sheridan’s Tionna Schwend from her teammate Janie Smart started the ball rolling for the Panthers – Schwend’s shot rattled in for two points.

Ennis’ Lexi Lindemulder drew a foul on the next play but was unable to capitalize from the line, and Smart pulled down the rebound. Sheridan was able to hold Ennis for another two minutes and Panther Alexis Woirhaye was sent to the line where she

made good on two free throws bringing the score to 12–48.

Sheridan couldn’t hold the Mustangs for long, however, as Ennis worked the ball into Jourdain Klein who scored a field goal to end their dry streak. Though Sheridan outscored Ennis in the final quarter of play, 5 – 4, the Mustangs charged to a win, 56–17.

“I thought we played well all weekend,” said Lady Mustangs’ head coach Jordan Overstreet. “It was a good weekend to get everyone some playing time so they are ready to go for districts. This week we will review some little things for districts, but I think the girls are ready to go this weekend.”

Grow led the Panthers with five points. Schwend ended the night with four, Micara Devereaux had three, both Woirhaye and Smart scored two and Destiny Fabel contributed a point to the team total.

Ennis senior Caitlin Klatt led her team with 12 points. Both Danyel Martin and Brigit Croy scored eight, Danika Philpott and Lindemulder each scored six, Klein and Josie Jenkins each scored five, Whitney McKittrick had four and Amanda Kimmey contributed two.

#### Boys basketball

Ennis’ Ty Morgan won the tip off and the Mustangs were first on the board. Ennis controlled the game until there were two minutes left in the first quarter, when Sheridan’s Kenny Foster put up a three-pointer and found the basket.

As time wound down in the first quarter, Sheridan struggled to connect with the basket – Ennis, on the other hand, capitalized on steals and fast breaks to expand their lead. As the buzzer sounded, Ennis’ Tracer Croy launched a Hail Mary three-pointer from a few feet behind the arc and the ball rattled around the rim and fell through the net. Sheridan was behind, 3 – 22.

In the second quarter, Panther Tristen Horn hit his sweet spot, knocking down two three pointers. However, Sheridan’s defense could not slow the Mustang charge, and the Panthers were down, 10 – 43 at the half.

Sheridan outscored Ennis in the second half of the game, but it was not enough to bring down the Mustangs, who cruised to a win, 58 – 27.

“The kids played well ... this weekend,” said Sheridan’s head coach Chad Elser. “They came out and played with the most intensity and physicality all season. As for districts, we will have to bring that same intensity and physicality to be successful. We are going to work on our offensive and defensive game plans and if we play a full 32 minutes of basketball I believe we will have success at districts.”

Horn tallied 22 points during the game. Foster’s three and another two points from Isaiah Galiger made up the team’s total.

Nine Mustangs scored during the game – Jake Knack had 18 and Gavin McKittrick and Ty Morgan both scored 10.

Abigail Dennis/  
The Madisonian  
Panther Tristen Horn shoots a three over two Ennis players. Horn ended the game with 22 points.



Abigail Dennis/  
The Madisonian  
Two Panthers hustle on defense to prevent a Mustang basket.





# Winterfest 2016



Photo courtesy Amy Kelley



Caitlin Avey  
THE MADISONIAN  
news@madisoniannews.com

Early morning rain did not stop a crowd from gathering around Virginia City's ice rink for the annual Winterfest activities this past Valentine's Day weekend.

The weather held as teams from the county and surrounding areas hit the ice to battle it out for the coveted champion titles

in broomball, log saw, dog in a wheelbarrow and fire house roll up.

While Virginia City is most known for summer tourism and events, Winterfest always draws a crowd.

Winterfest is sponsored by VICE, a non-profit organization out of Virginia City that cares for the ice rink.

"(Winterfest) has been consistent since 2005, but it has been around since the 80s,"

said Amy Kelley who, along with Stacey Gatewood, were in charge of this year's festivities.

The three-day event gives residents of Madison County and its visitors a chance to unwind, share in some good company and get outside.

"It's just fun for everyone," said Kelley, who favors the broomball competition. "It's a fun spectator sport and the whole town just comes out to support each other."



PHOTO CAPTIONS CLOCKWISE FROM BOTTOM LEFT

Caitlin Avey/The Madisonian  
Jake Herak of the Brown Cows takes a tumble on the ice over his opponent.  
Photo courtesy Abby Thomas

The fire hose roll up race gets heated.  
Caitlin Avey/The Madisonian

Tommy Nevin (BACK) and Pete Rossiter (L) attack the log during the log saw competition.  
Photo courtesy Amy Kelley

The MaGee's took the coveted broomball trophy home after three days of competition.

## BASKETBALL ROUND UP

Abigail Dennis  
THE MADISONIAN  
a.dennis@madisoniannews.com

### ENNIS

The Mustangs traveled to the Ruby Valley on Feb. 12 to play the Panthers (see a feature on the game on A5) and then welcomed the Gardiner Bruins to the Ennis gym on the 13th for their final games of the regular season.

#### Gardiner at Ennis

The Mustangs started off slow, but found their rhythm and charged ahead of the Bruins, 52 – 35. Jake Knack scored 16

points, Gavin McKittrick had 12 and Ty Morgan contributed 11. Four other Mustangs scored during the match up.

The Lady Mustangs took a commanding lead over the Lady Bruins in the first quarter of the game and turned that lead into a win, 56 – 23. Caitlin Klatt led the charge with 16 points. MaKenzie Moen and Jourdain Klein both scored nine, Danyel Martin had six, Danika Philpott had five and five other players scored during the game.

### HARRISON

Harrison played Manhattan

Christian and Shields Valley to close out their regular season – the Eagles traveled to Madison County on Feb. 11 and the Wildcats visited the Rebels on Feb. 13.

#### Manhattan Christian at Harrison

The Wildcats struggled against the Eagles and lost, 18 – 59. Matt Fouch scored eight points, Parker Galt had four, Zane VonBergen had three, Chas Buus scored two and Lane Buus scored one.

The Lady Wildcats fared better, but still fell to the Lady Eagles, 50 – 55. Josie Hokanson led the charge with 20

points, Addie Nesbit scored 16, MaKenna Livezey scored seven, Taya DeFrance contributed four, Hailey Hokanson had two and Alexys Bacon scored one.

#### Harrison at Shields Valley

Though the Wildcats battled hard, they lost to Shields Valley, 42 – 76. Chas Buus scored 14 to lead the team, and five other players scored in the game.

Though Shields Valley played the Lady Wildcats close in the first half, Harrison/Wilow-Creek was able to pull away in the third quarter and won, 43 – 33. Taya DeFrance and Addie Nesbit scored in double digits with 15 and 12, respectively.

Josie Hokanson scored nine, Makenna Livezey scored six and Hailey Hokanson scored one.

### SHERIDAN

The Panthers' final games before districts were against two tough teams – Ennis and Twin Bridges. See features on the games on A5.

### TWIN BRIDGES

The Falcons traveled to

Lima to take on the bears on Feb. 12 and then welcomed their Ruby Valley rivals to Twin Bridges on Feb. 13 for their last game before districts (see a feature on the game on A5).

#### Twin Bridges at Lima

The Falcons ended their season on a high note, beating Lima, 54 – 36. Tracen Eggers scored 14 points and James Bendon scored 12. Seven additional Falcons scored during the game.

The Lady Falcons had the same success against Lima and won, 53 – 30. Kailee Oliverson had a standout game, scoring 18 points. Both Jessica George and Megan Martin scored nine. Five other players scored during the game.





## Sandru victorious at American Legion oratory competition

Submitted by Doug Martin

On Feb. 11, the American Legion High School Oratorical Scholarship Program speech contest was held at the Twin Bridges High School. The event went well and after the scores were tallied, Kjersten Sandru, a senior

at the school, was our winner. Sandru gave two speeches; her prepared speech was titled "The Legacy of Liberty." She gave a touching speech dealing with her thoughts about the cost of freedom and how it can be fleeting. Her assigned speech, which was randomly drawn, was on the

26th amendment, dealing with a citizen's right to vote at the age of 18. As we all know, talking in front of a crowd is a difficult task to master and Sandru did a great job. On Feb. 20, Sandru will represent Twin Bridges at the American Legion District 6 oratorical contest in Butte.



Submitted by Emma Steffen

Pictured from L: Winner Shylee Morrow, alternate Kaylee Christensen, second place Angela Cain and third place Dana Lerum.

## Harrison School spelling bee

Submitted by Emma Steffen

Harrison elementary and junior high students participated in a schoolwide spelling bee on Feb. 10. Three fifth-graders, Sage Buus, Dana Lerum and Carter Collins participated, along with three

sixth graders: Jaclyn Hartman, Martin Ore, Rebecca Hodgson; three seventh graders: Shylee Morrow, Billy Walker and Rosie Chater; and three eighth graders: Angela Cain, Vern Homner and Kayley Christensen. First place went to seventh grade student Shylee

Morrow, second place went to eighth grader Angela Cain and third went to fifth grade student Dana Lerum, with eighth grade student Kaylee Christensen taking fourth and serving as the team alternate. The three top spellers will compete in the county spelling bee in March.



## Harrison honors their seniors

Submitted by Emma Steffen

On Feb. 11, Har-

ison and Willow Creek recognized their seniors during their basketball

games vs. Manhattan Christian. All 12 Har-

seniors were recognized with family and friends by their side.

Madison County Sanitarian's Office  
P.O. Box 278 - 103 W. Wallace Street  
Virginia City, MT 59755  
(O) 406-843-4275 (F) 406-843-5362  
mcsani@madison.mt.gov

## SERVSAFE TRAINING

The Madison County Sanitarian's Office will be holding a series of ServSafe trainings. A successful passing grade will satisfy the Montana Food Code, which requires all licensed food establishments to have a Certified Food Manager on staff. The dates and locations are listed below:

**DATE: FEBRUARY 9TH, TUESDAY, 8:00 AM - 5:00 PM HELD IN VIRGINIA CITY  
FEBRUARY 25TH, TUESDAY, 8:00 AM - 5:00 PM HELD IN VIRGINIA CITY**

**Fee: \$75.00**

Registration Deadline: One week prior to the class

Registration forms can be found on the Sanitarian's page of the Madison County website at madison.mt.gov, or the Sanitarian's Office, located at 103 W. Wallace Street in Virginia City.

Textbooks will be available for pick up at the Madison County Sanitarian's Office. Applicants must be registered and fees paid in advance of receiving textbooks and exam materials. Lunch will be provided at no cost.

Please call the Sanitarian's Office at 843-4265 to register for this training. Seating is limited, so please register early.

## Ennis Rodeo Association

### Annual Stockholders Meeting

## February 29 at 7:00 p.m.

### Alley Bistro in Ennis



**BERKSHIRE HATHAWAY**  
HomeServices  
Montana Properties

## Let our family help yours!

We are locally owned and operated and have the depth, strength and brand power to market and sell your home. Our network extends globally in reputation and strength. Call one of our sales associates today if you have any questions about the market or are interested in what your home is worth.

BHHSMT.COM

ENNIS: 406.682.5002, 101 E MAIN ST | SHERIDAN: 406.842.5650, 118 S MAIN ST  
TWIN BRIDGES: 406.684.5686, 106 N MAIN ST

A member of the franchise system BHHS Affiliates, LLC. Equal Housing Opportunity.



Sara Johnson  
MANAGING BROKER  
570.4249



Rikki Dilschneider  
BROKER  
581.5155



Melinda Merrill  
BROKER  
596.4288



Jan Murphy  
BROKER, GRI  
539.4200



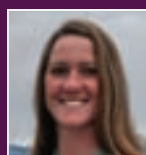
Tim Beardsley  
SALES ASSOCIATE  
581.7056



Holly Driskill  
SALES ASSOCIATE  
451.3527



Jill Gaar  
SALES ASSOCIATE  
580.5636



Dot Merrill  
SALES ASSOCIATE  
570.9067



Tanya Matson  
SALES ASSOCIATE  
580.6987



Ruth Stickrod  
SALES ASSOCIATE  
682.3177



Shylea Wingard  
SALES ASSOCIATE  
581.5254



Kathy Wooten  
SALES ASSOCIATE  
731.676.2463



Josh Vujovich  
SALES ASSOCIATE  
570.9536



Kay Carter-Colwell  
BROKER, ABR, CRS, GRI  
596.1077



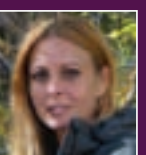
Annie Jorgensen  
SALES ASSOCIATE  
570.5663



Frank Colwell  
MANAGING BROKER  
596.1076



Michelle Van Dyke  
BROKER, ALC, GRI, SRS  
596.0805



Jack Leber  
SALES ASSOCIATE  
596.7893



## Obituaries continued from page B4

on Chinese soil and documented their migration. He was successful in convincing the Xinjiang (Shin-jiang) Provincial government to institute protection for many of its wonderful species and his reports were responsible for the creation of the Tashorgan Wildlife Reserve in the Pamirs. These expeditions and conservation achievements are memorialized in his second book, "China Safari (1988)."

Bob Lee was a Fellow of Exploration in The Explorers Club, a member of the Boone

and Crockett Club founded by Theodore Roosevelt in 1887, a life member of the National Rifle Association, a member of the Visiting Committee of the Arms and Armor Dept. at the Metropolitan Museum of Art, a research associate in mammalogy, Museum of Natural History, at the University of Kansas and an affiliate professor of management at The University of Montana, where he lectured to graduate students about the problems involved in saving our ancient forests in

the Pacific Northwest, clear-cutting and lack of regrowth in the Rocky Mountain states and the responsibilities of business and industry with respect to the environment.

In 1988, Lee created an endowment for graduate studies in wildlife management at the University of Montana. His gift was the largest single donation ever received and resulted in three scientific expeditions to the Qinghai (Ching-Hy) Province of China, on the Tibetan Plateau, to study increased population management for wild yak and musk deer. He also created a scholarship for Native Americans to

attend the College of Forestry and Conservation at UM.

In 1999, Lee was presented with the C.J. McElroy Award from Safari Club International for his contributions to hunting and conservation.

The Robert M. Lee Foundation has awarded large sums to various conservation organizations and other efforts to control subdivided development of pristine areas.

In 1991, he funded the endowment of the Robert M. Lee Gallery of American Arms at the Metropolitan Museum of Art in New York City. He also supported the Nevada Museum of Art in Reno and

many animal rescue societies.

Mr. Lee was a collector of antique colts, winchesters, European arms and armor and modern sporting guns, selections of which are featured in his book series, "The Art of the Gun (2002-2003)" and "Magnificent Colts (2011)." An Exhibition of his many collections was held at Sotheby's New York in June 2013.

An avid car collector, Lee won the coveted Best of Show award at Pebble Beach Concours d'Elegance®, the world's premier automobile competition, in 2006 and again in 2009; Best of Show at The Quail: A Motorsports Gathering, in 2006

and 2012; and Best of Show at Amelia Island Concours in 2014.

As a collector, he considered himself the responsible custodian of remarkable artifacts of history.

Bob Lee is survived by his wife, Anne Rutledge Brockinton Lee; a sister-in-law, Alta Maree Brockinton of New York City; and a niece, Alta Hagan Thorne of London, England. He was predeceased by his parents and his in-laws, Alta Maree Massey Brockinton and David Arthur Brockinton, junior, a prominent trial lawyer, of Charleston, S.C.

Online condolences may be shared at the website [www.waltonfuneralhomes.com](http://www.waltonfuneralhomes.com).

### Ty Allen McKay July 10, 1987 - February 11, 2016



Ty Allen McKay was born on July 10, 1987, in Missoula and left this world to go on his forever hunt Feb. 11, 2016, in Ennis due to a ranching accident.

He attended schools in Polson graduating in 2006 where he was involved in baseball, wrestling, football and boy scouts. Following his love of the outdoors, he made

his living in the construction and ranching business. Ty was an avid outdoorsman enjoying hiking, camping, fishing, hunting, four-wheel driving and going to the shooting range. When not hunting wild game with his rifle or bow he was scouting for the next hunt, gathering any antler sheds he could spot along the way. His home was filled

with mounted "trophies" and sheds. Ty loved visiting and entertained everyone with his fantastic hunting stories. He truly was the extreme hunter. This past season he brought home a mountain goat, black bear, elk, deer and antelope.

Ty leaves behind his mother Cindy (McAllister) St. Clair of Polson; father Bud (Crystal) McKay of Big-

fork; brother Layne McKay of Missoula; grandmother Fay (Sonny) Addington of Polson; step father Rob St. Clair of Polson; step sisters Stephanie (Curtis) Ward, Xavier and Caitlyn of Polson, Alesha St. Clair (Josh), Keanen, Logan and Braelyn of Frenchtown; step grandparents Bob and Betty St. Clair of East Helena; as well as

many aunts, uncles, cousins and a multitude of friends.

A celebration of Ty's life will be held on Saturday, Feb. 20 at the Ronan Community Center at 3 p.m. followed by a luncheon. Please bring memories to share.

Lake Funeral Home and Crematory of Polson is assisting the family with arrangements.

# HOW WE WORK

## GET A GLIMPSE AT HOW THE MADISONIAN OPERATES SO YOU CAN ENGAGE

### ADVICE FROM US TO YOU

Here are some tips about getting submissions printed in the paper. We have policies in place so we can operate fairly – and smoothly – and we want you all to understand them.

- We cannot guarantee any given submission will be printed in the paper. If you need a guarantee, or a guaranteed date of publication, your best bet is to purchase an advertisement.
- We're a newspaper, but we're also a business. There is a fine line between community news and advertising – if you are promoting an event, a fundraiser, a meeting, a business, a service or an organization, it qualifies as an advertisement. If you're unsure whether or not your submission is advertising or news, contact Abigail ([editor@madisoniannews.com](mailto:editor@madisoniannews.com)) and she will explain everything.
- If you want to see something in the paper, you have to reach out. Don't be frustrated if we aren't covering the news you want – instead, call us! Let us know what interests you. Keep in mind, however, we are a small office with a limited staff and we care about all of Madison County ... it's a lot of ground to cover. If we can't make it to an event, don't be discouraged. Snap a photo, write a caption and send it to Abigail ([editor@madisoniannews.com](mailto:editor@madisoniannews.com)) on your own!

### WHO TO CALL?

CONSIDERING ADVERTISING? Reach out to Susanne Hill ([s.hill@madisoniannews.com](mailto:s.hill@madisoniannews.com)), our sales director.  
CURIOUS ABOUT DESIGNING AN AD? That's Erin Leonard ([ads@madisoniannews.com](mailto:ads@madisoniannews.com)), our art director.  
WANT TO TALK NEWS? COMMUNITY EVENTS? SPORTS? PHOTOGRAPHY? Abigail Dennis ([editor@madisoniannews.com](mailto:editor@madisoniannews.com)) is your go-to. She is the editor.

### OUR MISSION

Our mission is to publish a distinguished and successful newspaper that serves the Madison Valley, Ruby Valley and surrounding areas.

We will inform, enlighten and entertain our readers and meet the needs of our advertisers while promoting the interest of our readers and be a service to our community. We are committed to values of high performance, these values being: integrity, mutual respect and professionalism.

More so, we are a community paper. We exist to inform and celebrate Madison County, but we are also here to hold our county and state officials and institutions accountable to our residents. For us to do the best job we can, we need YOU. We want to hear what is important to you and we appreciate all news tips that come our way. Please send all submissions and ideas to Abigail at [editor@madisoniannews.com](mailto:editor@madisoniannews.com), or give her a call at 682-7755.

### DEADLINES!

Our general deadline is 5 P.M. FRIDAY THE WEEK PRIOR TO THE PAPER IN WHICH you want your ad, submission, etc. included.

However, the holidays may cause some changes in our schedule. Please be on the lookout for bright ads that will let you know of any schedule and deadline changes!

## HAVE QUESTIONS ABOUT OUR POLICIES AND OPERATIONS? READ ON!

### IMPORTANT POLICIES

\* Not all of The Madisonian's policies are listed – if you have more questions on how we handle certain situations per our policies, please give us a call at 682-7755.

#### PRESS RELEASE POLICY

- The Madisonian staff will give all press releases full consideration, but ultimately retains the authority to determine whether or not to publish releases.
- Content must be factual and objective.
- Content must not contain advertising language (such as, "call us now," "buy tickets," etc ... Content must not include event information or pricing).
- Content may only be submitted and published once.
- The Madisonian may edit submission for grammar and content.

#### LETTERS TO THE EDITOR POLICY

- The Madisonian encourages the opinions of readers on public issues and matters of local concern. Letters must be close to 350 words. Please include the writer's name, address and phone number.
- The Madisonian reserves the right to edit content for grammar, good taste and libel. We also reserve the right to reject or delay publications.
- Content in the letter to the editor section of the paper does not reflect The Madisonian's own opinions.
- Announcements and letters of a commercial nature will not appear in this section.

#### Advertising policy

- The Madisonian accepts most advertising, but may turn away any advertisement for any reason. It is up to us to decide on placement and content acceptability.
- Advertisements are not necessarily the opinion of or support by The Madisonian.
- Our client information is confidential.



Abigail Dennis  
Editor  
[editor@madisoniannews.com](mailto:editor@madisoniannews.com)



Caitlin Avey  
Staff writer,  
Projects assistant  
[news@madisoniannews.com](mailto:news@madisoniannews.com)



Susanne Hill  
Sales Director,  
Co-publisher  
[s.hill@madisoniannews.com](mailto:s.hill@madisoniannews.com)



Erin Leonard  
Art Director,  
Co-publisher  
[ads@madisoniannews.com](mailto:ads@madisoniannews.com)

### THE MADISONIAN

P.O. Box 365, Ennis, MT 59729  
Phone 406-682-7755

Toll Free 1-888-238-7849 | Fax: 406-682-5013  
email: [editor@madisoniannews.com](mailto:editor@madisoniannews.com)

### HOURS OF OPERATION:

Monday - Friday ~ 9 am - 5 pm -

Call ahead to make sure we're not out on a story - we want to make sure we're available to you!





# TWIN BRIDGES SCHOOL SPELLING BEE CHAMPS

Submitted by Chad Johnson  
TWIN BRIDGES SCHOOLS

On Feb. 4, more than 160 words were delivered to 12 top-notch spellers. In the end, the Twin Bridges Spelling Bee judges confirmed the following students as victors.

- First Place – sixth grader, Ethan Wayland
- Second Place – eighth grader, Ashleigh Guinnane
- Third Place – seventh grader, Carl Shaw
- Fourth Place – fifth grader, Ruby Waller

The Twin Bridges' students will compete in the Madison County Spelling Bee which will be held on March 2 at 10 a.m. in the community room in the new Madison County Administrative Offices building. They will join five students from Ennis, four students from Sheridan and three students from Harrison to compete to advance to the state competition.



Megan Barsness takes home the championship trophy at the Ennis Schools spelling bee.

Courtesy Brian Hilton

## Sisters compete against one another for Ennis Schools spelling bee championship

Submitted by Brian Hilton  
ENNIS SCHOOLS

Congratulations to fifth grader Megan Barsness, the Ennis Schools Spelling Bee champion! Megan,

along with Maddie Barsness (eighth grade), Elina Dilschneider (sixth grade), Gillian Gilbert (fifth grade) and Haylee Hunsaker (sixth grade) will represent Ennis Schools at the Madison

County Spelling Bee on Mar. 2 at 10 a.m. in Virginia City at the new Madison County Administrative Offices.

Megan and her older sister, Maddie, were the final two spellers in the school compe-

tion, with Megan coming out on top. The same two sisters were the final two contestants in the school geography bee back in January as well – only the first go around, older sister Maddie came out on top.

ENNIS  
CONTINUING  
EDUCATION

Spring Fever?

**WORKSHOPS THROUGH ECE**

**Beekeeping 101. Saturday, February 27th  
9am - 4 pm, Rm. 19 Jr. High, \$20**

This class is for those folks who are interested in one of the most rewarding and interesting hobbies you can get involved in. If you just want to know more about the fascinating little bug called a honey bee, or if you are thinking about becoming a hobby beekeeper, or you have made the commitment to keep bee's, or you are just struggling to get your hives off of the ground, this course is for you. Beekeeping 101 will address all aspects of beekeeping from , what is a honey bee, to why should I keep bee's, all the way through to what do I do with all this honey? This class is taught by: Steve Thorson, a Gallatin Valley hobby beekeeper, owner of Cedar Meadows Apiary, and Montana Honey Bee Company.

**Planning Today for Eating Tomorrow, Gardening Workshop (re-schedule) with Kaye Suzuki, Tuesday, March 1, 6-9 pm, Rm. 19 Jr. High, \$10, bring a brown bag dinner**

This is a first time "brown bag" evening class offered to all who want to enjoy the "veggies" of their labor over a longer season. We will cover seed selection for: storage, canning, freezing and dehydrating. Also covered will be timing for multiple plantings, what varieties will thrive in cooler early and late season plantings, as well as how to protect and enhance growing conditions for those shoulder seasons. Come prepared to share your successes and failures, so we can all learn how to produce tasty healthy food over a longer period of time.

682-4258 • WWW.ENNIS-ECE.ORG



**GEOGRAPHIC BEE WINNERS**

Courtesy Chad Johnson

According to Nationalgeographic.com (2016, p1), "Each year thousands of schools in the United States participate in the National Geographic Bee using materials prepared by the National Geographic Society. The contest is designed to encourage teachers to include geography in their classrooms, spark student interest in the subject, and increase public awareness about geography." Twin Bridges students from fourth through eighth grade vied to become school champion and advance on in the competition. It was a hard fought battle taking on many additional rounds, but seventh grader Carl Shaw became the 2016 Geographic Bee Winner with Rob Dale, an eighth grader, named as runner-up. Shaw will try his skill out by taking a written test to advance to the next level.

**R&M Rentals Inc.**  
Ron or Martha Noack  
4995 US Hwy 287 N. ~ Ennis, MT 59729

**Daily & Weekly Rentals**  
Compact & Mid-size cars, SUVs  
Office Hours: 9 am - 5 pm, M-F  
Saturday by appointment  
Major Credit Cards Required  
**406.682.7039**  
After Hours Call 581.0096 or 570.8133 or  
[xpressrenta\\_car@yahoo.com](mailto:xpressrenta_car@yahoo.com)

**CALL 1-800-NEW-HEAR  
(800-639-4327)**  
[www.HearingAidInstitute.com](http://www.HearingAidInstitute.com)  
200 S 23rd Ave-E-1 Bozeman

**FREE HEARING CLINIC!**  
**THURSDAY, FEBRUARY 25**

MADISON SQUARE ATHLETIC CLUB  
#5 Sunrise Loop, Unit J • Ennis

**SERVICE CENTER**  
10-12 • No appointment necessary!  
FREE HEARING TEST 12- 5 PM  
BY APPOINTMENT ONLY.  
CALL FOR DETAILS.

Hearing Aid Institute honors the following provider prices:  
Providers for MT Farm Bureau, "Clear Value" • Federal Blue Cross Blue Shield  
Providers GEHA and Miner's Association

**KEEP-YOU-IN-STITCHES**

JAN WOOD  
Clothing Alterations  
Custom Sewing  
682-7824 • 600-2518

**SHERIDAN SCHOOLS  
ADULT  
EDUCATION**

**SHERIDAN ADULT OPEN GYM**

SUNDAY EVENINGS (VOLLEYBALL) 7-9 PM  
WEDNESDAY EVENINGS (BASKETBALL) 6-8 PM  
COORDINATOR: ART HALL

Please bring clean, non-marking gym shoes to help keep the gymnasium floor in good shape.

To register for a class call Emily at 842-5302.





# Twin Bridges junior high basketball team triumphs at the Three Forks tournament

Submitted by Stephanie Kruer the Three Forks basketball tournament on Feb. 6. Pictured starting from the back row, left to right: Coach Andy Nye, Tate Smith, Rob Dale, Nate Konen, Aaron Grabil, Trystan Harmon, Charlie Krueer and Coach Mike Hughes. Front row, left to right: Cody Olsen, Axton Anderson, Jake Hughes, Carl Shaw and Bryce Nye.

## BARNEY CONSTRUCTION, INC. WHEN QUALITY COUNTS.

Residential Contracting  
406-581-9388  
barneyconstruction@yahoo.com

## ENNIS PHYSICAL THERAPY

Specialized/Individualized patient focused care!

Patient care based on over 20 years of experience

Robert "BOB" Sahli, PT/ATCLAT  
OLDEST Healthcare Provider in the Madison Valley  
Physical Therapist/Licensed Athletic Trainer  
(ph) 406-682-3112 • (fax) 406-682-3132



## STUDENT OF THE WEEK ALDER

MaRae Smail is an outstanding student at the Alder School. She is in second grade, enjoys reading and displays good work habits. MaRae consistently turns in quality work and is an active participant in class.



SPONSORED BY:

Propane  
Hunting & Fishing Supplies  
Hunting Licenses

2325 Hwy 287 • 406-842-5679

### CIRCLE L ANGUS

MARK THE DATE  
**FEBRUARY 22, 2016**  
1:00 p.m. (MST) • Dillon, MT • Beaverhead Livestock Auction  
*Breed-leading Herd Sires & Legendary Cow Families*  
Selling... 120 Yearlings & Long Yearling Angus Bulls  
10 Registered Yearling Heifers  
40 Commercial Yearling Heifers

Video of the offering available on our website.

#18247895 • 1-27-15  
**Circle L Payweight 541C**  
CE BW WW YW M \$W \$B  
+5 +.6 +54 +95 +23 +53.13 +136.77

**SIRES REPRESENTED**

- S Chisum 6175
- Diamond Still in the Rough
- SAV Angus Valley
- SAV Resource 1441
- SAV Potential 0205
- AAR Ten X 7008 SA
- Connealy Capitalist

#18247911 • 1-26-15  
**Circle L Active Duty 538C**  
CE BW WW YW M \$W \$B  
+3 +1.9 +58 +99 +22 +58.51 +87.36

#18284285 • 1-28-15  
**Circle L Resource 557C**  
CE BW WW YW M \$W \$B  
+7 +2.2 +58 +104 +27 +59.27 +130.93

Call today to request a catalog!  
Cory & Kari Lamey • circlelangus@yahoo.com  
406-832-3535 or 406-491-7363  
www.circlelangus.com

62211 Hwy. 43 • Wise River, MT 59762

## 4 P A W S RESCUE PET OF THE WEEK



### DUFFY

Hi folks, just want to let you know I was adopted by a terrific family in beautiful Madison County. We all love each other very much. We play together and I get lots of love, playing and pets. And, of course, I give them a big share of purrs and loves also. You can adopt your own little lover like me, if you call Misty at 439-1405. Maybe see you sometime, but if not, adopt one of my friends. Duffy

SPONSORED BY:

### McLeod Mercantile

2 convenience store locations  
**Norris & Sheridan**

Bulk fuel delivery in Madison & Jefferson counties  
**(406)685-3379**

**\*\*24 Hour fueling\*\* \*\*snacks\*\*  
\*\*fishing licenses, bait & tackle\*\***

## MADISON COUNTY WEATHER

### Thursday



Breezy. Cloudy with a 50 percent chance of rain and snow showers. Highs 35 to 45.

### Friday



Mostly cloudy with a 20 percent chance of snow showers. Highs 35 to 45. Lows 20 to 30.

### Saturday



Mostly cloudy with a 20 percent chance of rain and snow showers. Highs 30 to 40.

### Sunday



Partly cloudy. Highs 30 to 40. Lows 20 to 25.

### Monday



Mostly cloudy with a 20 percent chance of rain and snow showers. Highs 35 to 40.

## Quote of the Week:

“Love is when the other person’s happiness is more important than your own.”

*H. Jackson Brown, Jr.*

## Gentle Heart Home Care

Sylann Smith is now taking clients in need of care at their home

\$20-\$25/hr  
In or out of town

## RALPH HAMLER

LICENSED SANITARIAN  
Septic Application & Design  
Subdivision Applications

406-842-5788  
Cell: 406-596-0437  
Sheridan, MT  
ralphhamler@gmail.com

## Get Results.

s.hill@madisoniannews.com

## 4 RIVERS CONCRETE PRODUCTS

SHERIDAN, MT  
WHITEHALL, MT

Quality Concrete - Premium Service



Front Discharge Trucks  
Ready Mix Concrete  
Washed Sand & Gravel

842-5735 • 287-3728



# IT'S ALL PEACE AND LOVE

Caitlin Avey  
THE MADISONIAN  
news@madisoniannews.com

While it has birthed rodeo legends and a Kentucky Derby winner, Twin Bridges may be best known as the mecca of the class C sports world, producing state champions, all-Americans and countless collegiate athletes. To some, being a Falcon may be too much pressure to handle, but that is not often the case — especially for the girl's varsity basketball team. After a trip to the state tournament last year that ended at the semifinals, expectations are high and the Lady Falcons are hoping for redemption. This week, the team heads to districts in Manhattan Christian as the number one seed, thanks to their undefeated record.

Walking into the Twin Bridges gym, motivation can be easily acquired. The shiny hardwood floor, dressed in red and black, is well-used — the Lady Falcons run drill after drill, shooting basket after basket.

"Let's go!" yells head coach Rob Lott as he walks into the gym.

And just like that, the team takes off. A sea of red and black practice jerseys weaves around the court, switching directions and high fiving one another any chance they get.

The Lady Falcons practice like a well-oiled machine. They move as a unit, transitioning from laps to stretches with constant chatter and encouragement throughout.

"We focus on the fundamentals," said Lott. "Dribbling, ball handling, layups and conditioning."

Lott, who has been coaching the Lady Falcons for 16 years, describes himself as "old-school."

"I believe in a good, tough work ethic," he said. "If they work hard in practice, they'll work hard in the game."

Lott shoots a look to Abbi Olsen, team manager, to put 1:30 on the clock while the team lines up for a three-man weave.

"You better hustle or you're not going to make it," yells Lott.

Hard work is the essence of this Lady Falcon team. Even in practice, you can see a look of determination on each player's face as their effort drips in the form of sweat off their brows.

As soon as the clock starts, the first three girls weave their way down the court and to the hoop at game speed.

"I've got ball, I've got ball!" yells senior Megan Martin as she grabs the rebound and weaves back down the court.

Three by three, the girls make their way down the court trying to beat the clock and complete layups and good passes, not once during the drill is the gym silent.

As the buzzer rings, the team falls just short of their goal. Almost instantly, they run to the sideline and wait for their cue.

"They have to make a certain number of layups or else they have to run," Olsen said.

"Go!" yells Lott, and all 17 girls run in a dead out sprint to the other side and back. "Let's go again," he said, putting time back on the clock.

Olsen, a sophomore this year, played basketball last year but due to an injury decided not to risk it this season.

"I didn't want to leave the team — we're like a family," she said.

#### Building a family

Audrey George, a junior on the team, sits against the bleachers watching as her teammates run down the court. With a torn ACL, George is out for the remainder of the season, as well as the upcoming track season, but refuses to miss a practice.

"We're a family ... some of us have been playing together since we were little," she said.

The Falcon players attribute their success to that family aspect. From the team sleepovers and dinners to movies and ice skating trips, building team chemistry comes before rankings and records. And it is the role of the juniors and, more specifically the seniors, to help guide and encourage the newcomers and underclassmen.

"Going from sophomore year to junior year is like an awakening," said George. "You're finally starting to figure everything out and you just want to help (the underclassmen) understand and be there for them."

"We have struggled with leadership in the past, so it's really important that we build that chemistry," said senior

Cassidy Wetzel.

"It's all peace and love," added Martin.

While winning a game or even a state title might seem important to some, what is most important to the senior Falcons is leaving a good impression.

"It's mostly about being a good role model to the younger girls," said senior Jessica George. "You want to leave a good influence on them."

The upperclassmen say they have been inspired and influenced by their coaches.

"Coach Davis is like the glue that holds us all together — he does so much for the team," said A. George, referring to Steve Davis, the team's assistant coach. "And I have so much respect for Coach Lott. He's hard and he pushes us to do the best we can, but underneath he is a huge teddy bear."

#### Carrying a target

With an undefeated record, the team has a definite target on their back — and that is something they do not seem to mind.

"It's more pressure but I think that keeps us motivated," said J. George.

"We just have to focus on the good and stay positive," added senior Madyson Beagley.

Although the Lady Falcons are heading into the district tournament in the number one spot, getting there has not been easy.

Over half the bench sports either a knee brace or ankle tape and has had to endure and overcome injuries, gaining them the nickname the "bionic team."

Injuries aside, the Falcons also realize they are not the only team hoping for a district, divisional or state title.

"Every team is working hard," said Beagley. "We want it, but it's not going to come easily."

"We just want to stay humble as things come and take it one game at a time," added Wetzel.

Lott knows the amount of hard work the girls have put in and recognizes how bad they want it.

"They've just played well at the right times," he said. "They won't quit and they don't like to lose."

"We want this more than anything," said Beagley. "It's all or nothing."



All photos Caitlin Avey/  
The Madisonian

Top: The Twin Bridges Lady Falcons have a definite target on their back as they head into the district tournament this week in Manhattan Christian with an undefeated record.

Middle: Nineteen girls make up the Lady Falcon varsity and junior varsity teams for the 2015-2016 season. They are managed by Abbi Olsen and coached by Rob Lott and Steve Davis.

Bottom: Head coach Rob Lott has been coaching the Lady Falcons for 16 years.

Bottom right: Seniors Jessica George, Rylee Mehning, Madyson Beagley, Megan Martin and Cassidy Wetzel.



INDEPENDENT [ FINANCIAL ] PARTNERS

# ACHIEVE YOUR DREAM

TO SUBSCRIBE TO OUR NEWSLETTER AND LEARN MORE ABOUT US, VISIT OUR WEBSITE.



# HEALTH & WELLNESS

## Tips to prevent and treat cold sores this winter

Submitted by StatePoint

Did you know that the cold sore virus is very common? In fact, eight out of 10 people have it. And, if you have ever had one, you already know that an outbreak can be painful and unpleasant. Itching, burning, tingling and blisters are some of the symptoms associated with cold sores, and many people are especially susceptible to them during cold and flu season.

Blisters or sores usually appear when your body's defenses are down – when you are stressed or your immune system is weak, making you especially vulnerable this time of year. There is no cure for cold sores, but you can take steps to prevent an outbreak and manage the symptoms. Here is what to know:

**Prevention**

Among other harmful effects to skin, excess sun exposure can trigger cold sores, no matter what the temperature is outdoors. In the cooler months, take steps to limit sun exposure as you would during summer. This includes wearing a lip balm with SPF protection.

Work to keep your immune system strong all season. Eat a well-balanced diet, exercise and get sufficient rest every night.

A lot of stress can also be a trigger for a cold sore. Whether it is a bubble bath, yoga session, or an evening on the couch watching T.V., make sure your schedule includes some quality down time.

**Treatment**

Most symptoms go away in seven to 12 days. Before a blister

appears, you may feel tingling or burning on your upper or lower lip. This is called a "prodrome," a signal that a cold sore is imminent. This is the best time to make sure you have a trusted cold sore treatment on hand.

Remember, the cold sore virus is contagious, particularly during the open sore stage, so wash your hands regularly in order to prevent spreading the infection to others. Also avoid sharing glasses or utensils that may spread the virus. Sadly, kissing is also on the list of things to avoid.

In the winter, take extra precautions to prevent cold sore outbreaks. And if you do suffer from these painful symptoms, remember, there are many ways to ease discomfort.



## 4 tips to living better in retirement

Submitted by StatePoint

The conceptions and realities of retirement have changed a great deal over the past several decades, giving many seniors misgivings about the future. But your golden years can be happy, healthy and productive, say experts.

"For many individuals, confusion, fear and an overwhelming sense of powerlessness accompany the prospect of growing old in America. The good news is that we have power to address these concerns," said Scott

Page, author of a new book about retirement.

Are you retired or approaching the end of your working life? Are you concerned about an older parent or loved one? Here, Page offers expert tips on living better:

**Living ideas**

Reducing housing expenses can have an extra upside. For example, downsizing your empty nest offers

you the benefit of less house to maintain. Moving to a region of the country cheaper than your current area may take you somewhere sunnier, warmer and better suited for aging.

Another popular way to live more frugally is to consider taking on a roommate.

"Co-living arrangements like the 'The Golden Girls' are becoming more popular with single or widowed seniors. It helps save money and can be beneficial for socialization and support," said Page.

**Make money**

You can rake in extra income that does not feel like work. Review your talents and hobbies. Are you an excellent baker, a talented woodworker or musician?

"Seniors often have a lot of time on their hands, and they may be able to transform hobbies or interests into a way to make a little money," said Page, who points out that such activities can also be an excellent way to stay engaged and active, keeping minds and bodies vibrant.

**Saving tips**

Don't be shy about using the age card. After all, you have worked hard

for it. Senior discounts are available at restaurants, stores, on travel, adult education classes and gym memberships, and some websites have special bargain days for seniors.

You can also save by eliminating unnecessary expenses. For example – do you still need that landline telephone? Can you bundle certain services to help reduce costs?

Do an inventory of your possessions to determine which objects to keep and which to discard or sell.

**Connect with friends**

Consider planning meals with a support network.

"Maybe Sally takes Monday nights, Judy takes Wednesday nights and Sarah takes Friday nights," said Page. "Cooking for more than one person encourages community, and can be cost-effective if everyone is sharing in the responsibility."

Maintain an active social media presence online to stay connected to friends and family. Those with the same interests as you are just a mouse click away.

With smart strategies you can free yourself from worry about aging, while getting wiser over time.

## Health Care Under One Roof



- ⊕ PRIMARY CARE CLINIC
- ⊕ VISITING SPECIALTY SERVICES
- ⊕ OUTPATIENT LABORATORY
- ⊕ SWINGBED PROGRAM
- ⊕ PHYSICAL THERAPY
- ⊕ ER 24/7
- ⊕ IMAGING: (X-Ray, Ultrasound, MRI, CT-Scan, 3D Mammography)
- ⊕ HOSPITAL OUTPATIENT SERVICES
- ⊕ CRITICAL ACCESS HOSPITAL



305 N. Main • Ennis, MT 59729

406-682-6862

www.mvmedcenter.org



Dr. Jeff Squire

406-577-2380

222 E. Main St #1C, Ennis, MT

Exams  
Glasses  
Contacts

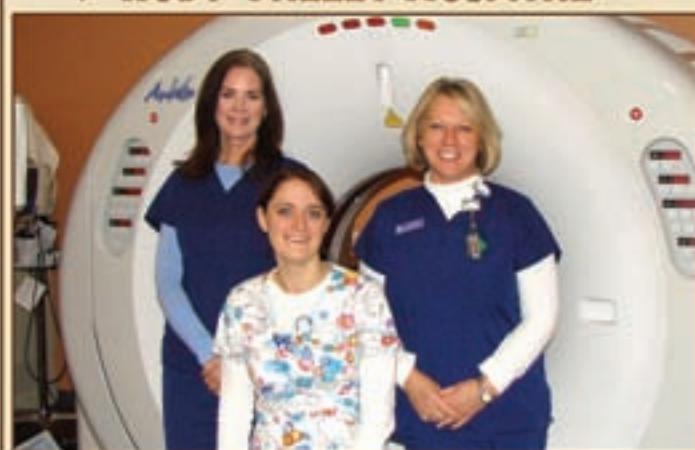


Ennis: Thursdays  
9am to 5pm

Bozeman: Monday through Friday  
9am to 6:30pm

We appreciate your patronage and will work hard to maintain your trust.

WE ARE HERE FOR YOU  
7 DAYS A WEEK + 24 HOURS A DAY  
RADIOLOGY + CT SCAN SERVICES  
THE RUBY VALLEY HOSPITAL



JOAN HENDRICKSON • TONYA ROMKEMA  
MARY ANN BIRDSILL, MGR.

PLEASE CALL (406) 842-5453 FOR AN APPOINTMENT

SHERIDAN, MONTANA  
WWW.RUBYVALLEYHOSPITAL.COM

MAC'S CHC PHARMACY

(406) 842-7434

317 Madison St  
Sheridan, MT

Monday - Friday  
9 am to 5:30 pm



Get Results.

s.hill@madisoniannews.com





# COLUMNS



## This, OUR VALLEY:

By Reverend Keith Axberg



### Time to wise up in the valley

Have you ever tried to eat a clock? It is very time consuming – Anonymous

I have been trying to figure out what the advantage is to getting older. I've heard a lot about the golden years – which I have been approaching my whole life, only to find I am better at gathering dust than gold. At least the dust I've collected never came at any great expense, so that's a good thing.

Rumor has it that as we get older we become wiser, but I think I lost my capacity to become a wise guy when the dentist removed my wisdom teeth last century. In theory, it was to make more room for the rest of my pearly whites, but I have always suspected the holes left behind provided an escape route for the gray matter that used to live up there betwixt the ears.

Be that as it may, I have made every effort to stay ahead of the brain drain by exercising the three arghs. That's pirate talk for reading, writing, and 'rithmetic. I have been told that if one does that triad regularly, the squirrel upstairs may be able to get off the wheel and use the passing lane on occasion.

On the other hand, have you ever noticed that Rodin's Thinker never seems to accomplish anything? He just sits there, but I don't blame him. Thinking can be quite exhausting. I know; I tried it once.

Now, what were we talking about? Oh, yes, the advantages of growing older.

One benefit often touted is having an opportunity to save one's doubloons. A national retirement organization has been trying to get me to sign up since I turned 50, promising discounts of one sort or another as a reward for continuing to draw breath past that magical half-century mark. I found I could save even more cash by NOT signing up!

They tried again to get me to enroll when I turned 55 – the double nickel – but like the speed limit of that name, no one ever paid any attention to either of us, so I returned the favor and ignored yet another invitation to save.

Besides, it seems like "saving" is sort of the business I am already in, so maybe I am a walking, talking, living and breathing aarp (which sounds quite canine of me). Lord knows I should be on a leash at times – it's not uncommon to find me gadding about town in a dog collar (and goodness knows I'm occasionally in the doghouse).

I do believe, interestingly enough, that we elders are entitled to discounts. The moral reasoning behind this pronouncement is that not only am I old, but I am cheap, too. That should gain me a reduction just on principal (pun intended).

I'm convinced that the best way to save pennies is by not spending them in the first place. I see those wonderful ads on television that offer the world for only three monthly payments of an arm and a leg, and if ordered now, they will throw in a set of steak knives to make the surgery easier. I appreciate their generosity of spirit, but while my flesh is weak, my mind is still tarp as a shack!

That is yet another advantage of growing older; there is more time and space between the mistakes I make. Wisdom lives between the tick and the tock of the clock.

I've occasionally been sold a bill of goods, only to discover the reality fell short of the promise. I once bought a set of non-stick cookware invented by someone who'd obviously never seen me cook; oy vey!

I do make unwise decisions, but over the decades I have become wiser. I've learned to bide my time while chewing on my options.

The purveyor of the proverbial snake-oil cries out, "He who hesitates is lost." My response? "Yea, verily thou shalt looketh before thou leapest!"

I know enough to call a timeout – to think before I act, to "sleep on it" before making a major decision – and I cannot remember ever regretting the delay (but my memory foam could be defective, I'll grant you).

As for our golden years, I say this: Become the Clock. Find what makes you Tick and embrace it – for Tock is truly cheap in this, our valley.

Keith Axberg writes on matters concerning life and faith. He can be reached at [kfaxberg@gmail.com](mailto:kfaxberg@gmail.com).

## NATURAL Resource News

By Rebecca Ramsey  
RUBY WATERSHED COORDINATOR

### MIRACLE PROCESS



Rebecca Ramsey

The unseasonably warm weather we've been having is making me have spring fever.

Friends with greenhouses are preparing their spaces for planting. Snow is melting, making the ground squishy and the air moist. Brave blades of grass are reaching for the sky. The seed catalogs are strewn through every room in the house, so I can daydream about my fantasy garden and flowerbeds in any free moment. I know I'm not the only one aching to put my fingers in soil. So this week, I choose

to focus on the miracle of growth of a flowering plant, which comes from seed.

Although seeds differ in size, shape, color and texture, they have parts in common:

- The embryo, which has numerous parts within itself, is basically the baby plant. It develops with an upward growing shoot and a downward growing root system.
- The food storage tissues (again with several parts), which store carbohydrates, fats and proteins to support the embryo during germination.
- The seed coat, which is the covering that provides mechanical protection to the other parts of the seed. It prevents excessive loss of water from within the

seed and serves as a barrier against parasite entry.

After fertilization in the ovary of a flower, the fertilized egg cell divides many times to form the plant embryo, which forms a wall around itself and is then known as a seed. When a seed comes to rest in conditions suited to its germination, it breaks open and the embryo inside starts to grow. To germinate, a seed needs three things: water, oxygen and the right temperature. Germination is the sprouting of a seed.

When a seed sprouts the embryo grows into a new plant. Roots grow down to anchor the plant in the ground and transport water and nutrients from the soil to nourish the plant, and become stored food. A shoot grows skyward and develops into a stem that carries water and nutrients from the roots to the rest of the plant. The stem also supports leaves so they can collect sunlight. Leaves capture sunlight to make food for the plant through the process of photosynthesis. Photosynthesis is the process of a plant that converts light energy into chemical energy, also known as food for the plant.

When the plant matures and is ready to reproduce, it develops flowers. Flowers have special male and female parts involved in reproduction, which includes pollination and fertilization. Pollination is the process by which pollen is carried by wind, animals or other disturbance from the male part of a flower (the anther) to the female part (the stigma) of another flower. The pollen then moves from the stigma to the female ovules. Pollen has male gametes containing half the normal chromosomes for that plant. After pollination, these gametes move to the ovule, where they combine with female gametes, which contain half the quota of chromosomes for its plant. This process is called fertilization. The ovary grows to form fruit, which protects the seeds and helps them spread away from the parent plant to continue the cycle all over again.

The whole process is a miracle! And it reminds me of this great quote on growth: "For a seed to achieve its greatest expression, it must come completely undone. The shell cracks, its insides come out and everything changes. To someone who doesn't understand growth, it would look like complete destruction." – Cynthia Ocelli

## A Christmas déjà vu

By Charlie Rossiter

\* Editor's note: Charlie submitted this column during the holiday season but it slipped through the cracks! I recently discovered it and thought a little Christmas cheer in February couldn't hurt. Enjoy!

Our American Legion local post #686 has many functions during the year. The first and main function is to flag our local cemeteries and hold Memorial Day services. One other duty involves our high school Christmas concert. At this time of the year, our members get together and sack up hard candy and an orange for the grade school kids. These are distributed after the Christmas concert in the high school gymnasium, later in the evening. Over the years our members have adopted certain jobs that they do on an annual basis. Some of our members man the front doors and distribute a large Washington apple to the parents and other adults leaving the concert. Another member and I are responsible for getting Santa Claus into the gymnasium and seated on a chair where he interviews the children and hears their Christmas wishes. It normally runs pretty smoothly, but on occasion we do have small problems, which have to be taken into account. Our Santa Claus is

always anonymous (at least to the kids) and normally suffers a little from stage fright. The two assistant elves (Legion members) try to keep order in the pandemonium that ensues at this time of the night. We try to run a very smooth and orderly procession to visit the old gent (in reality it's a little like herding wild goats). Parents with cell phones and cameras are pushing and shoving to get in the unspoiled position for the perfect pictures of little Johnny or Sally with this famous icon.

Many years back, after we got Santa seated, I heard a commotion in the line behind multiple undaunted parents, all entranced with their own children getting to sit on Santa's lap and oblivious to anything or anyone else in the gymnasium. They all wanted a picture for the ages, or at least a picture to post on Facebook the next morning. The commotion was emanating from a little boy with a tuft of red hair and sky blue eyes, who had to be enrolled in one of the earlier grade school classes. You could tell he was in his best clothes (not by his own choice) – he was wearing a set of red suspenders over a white shirt. His hair had been messed up and he was displaying the remnants of an earlier black eye. I knew I'd seen him before, but I

couldn't place him. He could possibly have been from my own past or maybe an old picture, but he was uncannily familiar. One of his classmates, a young girl, had tried to cut in front of him in line and he was having nothing to do with it. In his anger he had given her a sudden push, which upended her, and she unceremoniously landed on the hardwood gym floor. The look on her face was of complete surprise. The mischievous imp looked inoffensively around as if he'd had nothing to do with the present altercation and proceeded ahead in the line. The little girl looked for some help as she started to bellow like a freshly weaned calf as she realized her teacher was nowhere to be seen.

I stepped over to the girl and helped her up and got her back in line to see Santa. I whispered to her not to worry, as Santa saw what had happened and would know how to handle the situation. She smiled and thanked me. She retaliated to her nemesis by sticking her tongue out at him. He didn't seem to notice and showed no sign of remorse, as his mission was to get to Santa. Two kids later he reached his goal and with a hop landed on the old gent's lap. Little

Red started to give a detailed list of items which he'd been busily accumulating all year and dictated for what seemed like a couple of minutes. Santa asked him if he had been a good boy this year and he replied, "I've been a really good boy this year, Santa," his baby blue eyes batting and displaying an angelic look as he fibbed.

The little girl, next in line, listening to his fabrications knew that Santa was gonna bust that brat and started smiling in anticipation. Santa, missing his opportunity to make things right with her, promised to deliver the red head's requested Christmas booty, and sent the little hooligan on his way with a sack of candy and a hearty "Ho ho ho." The girl, knowing full well that her antagonist had just gotten away with perjury, stepped up to Santa wearing a frown and looked him squarely in the eyes. Santa asked her if she had been a good girl this year and she pessimistically replied, "Are you the real Santa or just a fake?" Santa replied, "Well, of course I'm the real Santa!"

The little girl retorted, "Well if you're the real Santa, what's my name?" Santa was caught off guard and replied to the doubting

continued on page B7

## Commodity Insite! Knock on wood

by Jerry Welch

It is bad enough the stock and commodity markets dance to the whims and ways of the Federal Reserve, other global central banks and the fragile psychology of investors, traders and agricultural producers. But it now seems market participants must possess an understanding of feng shui, a Chinese philosophical system of "harmonizing everyone with the surrounding environment," as Wikipedia describes the practice.

According to NBC News, "For the superstitious in China, the astrological divinations of a local feng shui master can be important guidance in making decisions for the coming year. For many others, the annual predictions are just for fun."

The feng shui master referred to by NBC News in this case is Chen Shuafu, longtime chairman of the China Fengshui

Association that supposedly has more than 50,000 members.

Those that know me understand I am not (knock on wood) superstitious. But when I discovered the Chinese dub 2016 the Year of the Monkey with some sobering economic forecasts for the New Year, it caught my attention. After all, one of the most quoted of sayings is, "As China goes, so go stocks and commodities." Understand China and one of its philosophies and just maybe, a glimpse of the future can be seen.

Feng shui master Chen Shuafu recently stated, "In 2016 we will see a big slide in the world economy. The global economic situation will be terrible and lots of companies will be bankrupted." He also suggests postponing important financial decisions in 2016, but warns that those

looking to grow families or resolve questions of the heart shouldn't wait any longer.

Think about that for a moment. The world's markets and economies are going to hell in a handbasket with firms going bankrupt, but such a scenario should be shrugged off and those in love should get married and have children anyway. He does go on to say with conviction, "It's a good year for people to give birth and to look for love. Babies born in the Year of the Monkey are regarded as very hardworking and lucky."

Not holding back and willing to dabble in United States politics Chen Shuafu stated with chutzpah, "The monkey year is not good for people born in the Year of the Dog. Donald Trump will have a difficult campaign year." Chen also notes that Hilary Clinton, who is born in the Year of the

Pig, is expected to have good luck and has a face that "conveys strong personality and ability."

It goes without saying that I quickly checked out the years comprising Year of the Dog. I did so not because I am superstitious (knock on wood), because I am not. And those years are 1946, 1958, 1970, 1982, 1994 and 2006. To Mr. Trump's chagrin, he was born in 1946 and for that he blames his mother.

Chen also noted that those born in the Year of the Tiger – 1950, 1962, 1974, 1986, 1998, 2010 – will not have a good year ahead. Nor those born in the Year of the Rabbit – 1951, 1963, 1975, 1987, 1999, 2011. Or those born in the Year of the Pig – 1947, 1959, 1971, 1983, 1995, 2007. Tough times are ahead for those born in any of those unlucky years if Chen is right.

Fortunately, Chen does have good news for some. According to NBC News, "Chen expects good times ahead for anyone born in the Year of the Snake (1941, 1953, 1965, 1977, 1989, 2001, 2013); the Dragon (1940, 1952, 1964, 1976, 1988, 2000, 2012); the Sheep (1943, 1967, 1979, 1991, 2003, 2015); and Ox (1949, 1961, 1973, 1985, 1997, 2009). Chen claims, 'Those animals get along well with monkeys.'"

Happily, Chen has a helpful hint for those born in unlucky years. He suggests eating more red apples and storing them at home. I was encouraged by that suggestion because I buy apples on a regular basis not because I am superstitious (knock on wood), because I am not. I also believe my computer and cell phone being an Apple will help me (knock on wood) be lucky this year as well.

Chen duly notes that because monkeys like fruit and the color red that alone can bring good fortune. Stock up on red apples he urges. His final suggestion to ward off bad luck for those born in an unlucky year is to wear more green, which is an acknowledgement of the monkey's natural jungle habitat.

The year is young and most markets controlled by the bears. What I am trying to grasp is how bears will or will not get along with monkeys, dogs, pigs, tigers, rabbits, snakes, dragons, sheep and oxen. On second thought, maybe I should not worry about such mythical and irrational things. After all, I do not believe in superstition because it brings bad luck. But according to feng shui master Chen, 2016 will only bring bad luck to those born in certain years. Fortunately (knock on wood), I was not born in one of those jinxed years.



# COMICS & PUZZLES



"THE GREAT THING ABOUT DEMOCRACY IS IT GIVES YOU A CHOICE."

Editor's Note: Any editorial cartoons printed in our paper do not reflect the opinion of the staff of The Madisonian.

## King Crossword

### ACROSS

- 1 Grand tale
- 5 Slight application
- 8 Big party
- 12 Netlike structures
- 14 Desertlike
- 15 Accelerator
- 16 Start a garden
- 17 That man's
- 18 Bob and Jakob of music
- 20 Urge on
- 23 "Scat, gnat!"
- 24 Close by
- 25 Baseball legend Casey
- 28 "Le Coq —"
- 29 Ritzy violin, for short
- 30 Do some lawn work
- 32 Placed a bet
- 34 Chinese menu staple
- 35 Acknowledge
- 36 Prove false
- 37 Up
- 40 Nonstick spray name
- 41 "And" or "but" (Abbr.)
- 42 Bergman/Boyer thriller
- 47 Horse's neck hair
- 48 "Hamlet" setting

1	2	3	4	5	6	7	8	9	10	11	
12			13					14			
15								16			
			17			18	19				
20	21	22			23						
24				25				26	27		
28				29				30		31	
	32		33				34				
			35				36				
37	38	39				40					
41					42	43			44	45	46
47					48						
49					50				51		

- 49 Formerly, formerly
- 50 On pension (Abbr.)
- 51 Medicinal amount
- 9 Geometry calculation
- 10 Legal claim
- 11 Tosses in
- 13 Overlay with plaster, perhaps
- 19 "— Cassius has ..."
- 20 Third-party abbr.
- 21 Cat call?
- 22 Brazilian rubber area
- 23 Scatter about
- 25 More mighty
- 26 Old-time actor Jannings
- 27 Centers of
- 29 Ballesteros of golf
- 31 Tiny
- 33 Nozzle attached to a Bunsen burner
- 34 Jog one's memory
- 36 "— Ha'i"
- 37 Pinnacle
- 38 Bellow
- 39 Hostels
- 40 "Hey, you!"
- 43 Hearty brew
- 44 Stickum
- 45 Day fractions (Abbr.)
- 46 Prop for 29-Down

© 2016 King Features Synd., Inc.

## Just a Pinch



Sharing Hometown Recipes, Cooking Tips and Coupons

By Janet Tharpe

### Pure Pleasure—Pancake Cupcakes with Maple Bacon Buttercream

"You'll want to eat these for breakfast!"



Moist and delicious Sheila Devor's Pancake Cupcakes with Maple Bacon Buttercream Frosting is one of those times when bacon really DOES belong in dessert! I loved the maple-bacon flavor in the icing. You can add a bit of bacon to the batter too for an extra pop of flavor... Because you can never have enough bacon. Right? Quite the treat!



Sheila Devor  
Towanda, KS  
(pop. 1,450)

See step-by-step photos of Sheila's recipe plus thousands more from home cooks nationwide at: [www.justapinch.com/pancakecupcake](http://www.justapinch.com/pancakecupcake)  
You'll also find a meal planner, coupons and chances to win! Enjoy and remember, use "just a pinch"...

- Janet

#### Pancake Cupcakes with Maple Bacon Frosting

##### What You Need

##### FOR THE CUPCAKES

- 2 c all-purpose flour
- 1 tbsp sugar
- 2 tsp baking powder
- 1 tsp salt
- 1 1/2 c whole milk
- 2 eggs
- 2 tsp unsalted butter, melted and cooled

##### FOR THE FROSTING

- 1 c unsalted butter, room temp
- 2 1/2 c powdered sugar
- 3 tbsp maple syrup
- 1 tsp vanilla extract
- 3 slices bacon, cooked, cooled and crumbled

##### Directions

- Preheat the oven to 400 F. Line muffin pan with liners and spray with non-stick spray.
- Whisk flour, sugar, baking powder and salt in a large bowl; set aside.

- In a separate medium bowl, whisk milk and eggs, then stir in butter.
- Add milk mixture to the dry ingredients. Whisk until just moistened and combined.
- Divide batter among the muffin cups. Bake until puffed and firm to the touch, about 10 min.

- Let cool for 5 min; remove cupcakes to a wire rack. Cool completely.
- To make frosting, whip the butter on medium-high for about 5 min.

- Reduce mixer to low; add powdered sugar a little at a time, waiting until it's mostly incorporated before adding more.
- Once all of the powdered sugar has been added, scrape the sides of the bowl and increase the speed to medium-high and whip until fluffy, 1 to 2 min.

- Add maple syrup and vanilla; whip for 1 min or so to incorporate.
- Add the bacon and mix to combine.
- Spread frosting on cupcakes.
- Top with additional crumbled bacon, if desired.

Submitted by: Sheila Devor, Towanda, KS (pop. 1,450)  
[www.justapinch.com/pancakecupcake](http://www.justapinch.com/pancakecupcake)

Brought to you by American Hometown Media

**Get the Good News!**

All puzzle answers on B7

**NOVICH INSURANCE AGENCY**  
Twin Bridges • Phone 684-5701

*For All Your Insurance Needs*

Serving The Ruby Valley For Over 40 Years

**Nestegard Construction, LLC**  
~Custom Wood Floors~  
Sales • Installation • Sanding  
Finishing • Re-finishing

Bart Nestegard      nestegardconst@gmail.com  
PO Box 790      Cell: 581-6743  
Ennis, MT 59729      Fax/Home: 682-7634

SKYLINE SURVEYING INC.

MARGARET STECKER, PLS • (406) 581-0144  
BOX 321, McALLISTER, MT 59740

\* Property Corner Location \* Boundary Surveys \* Boundary Realignments  
\* Family Transfer Surveys \* Subdivisions \* Construction Layouts  
\* Elevation Certificates \* Aerial Mapping \* Topographic Surveys

**Allhands Excavation, LLC.**

Dan Allhands 406-842-5777  
Pete Allhands 406-596-7980  
Brian Allhands 406-596-1337

Ponds, Roads, Reclamation, Stream Bank Stabilization,  
Utility Work, Foundations, Ditch Cleaning, Irrigation  
Diversions, and much more!

EXCAVATOR, ROAD GRADER, DOZER, BACKHOE,  
DUMP TRUCKS, BELLY DUMP, TRANSPORT      Put yourself in good hands!

BENEDICT BUILDERS LLC

BUILDING CUSTOM HOMES &  
COMMERCIAL BUILDINGS SINCE 1974  
MEETING ALL EXCAVATION NEEDS TOO!

406.843.5330  
PO Box 294      VIRGINIA CITY, MT      59755

JOE VELAND

**406.682.3999**

SERVICE WORK  
NEW CONSTRUCTION  
REMODELS

PO BOX 987  
ENNIS, MT 59729





# the Madison County MARKETPLACE

View classifieds online at [www.madisoniannews.com/classifieds](http://www.madisoniannews.com/classifieds).

## HELP WANTED



**NORRIS MT**  
A.M. Welles, Inc currently has openings for truck drivers.  
\*Class A CDL  
\*Local Haul - home every night  
\*MSHA certification desired  
\*Competitive Wages  
\*Benefits include: Health Insurance, 401(k), Paid vacation, Dental & Vision  
\*Call for application: 406-685-3372 or  
\*Fax resume to: 406-685-3270 or  
\*Email resume to: Susan at: [norrsfilter@hotmail.com](mailto:norrsfilter@hotmail.com) 13-5-b

Cardwell store and Moose Crossing Sweets & Gifts are now hiring friendly, team oriented, energetic people with exceptional customer service skills. Send resume to [cardwellstore@outlook.com](mailto:cardwellstore@outlook.com) or stop in to pick up an application. Starting wage at \$9.50/hr. No phone calls, please. 2-tfc-b

Twin Bridges Library Director  
Approx. 30 hours/week (.75 full time). Salary plus benefits. Education - minimum high school diploma or GED certificate and one-two years general library experience. Please send resume to Twin Bridges Public Library, PO BOX 246, Twin Bridges, MT 59754, or deliver resume to Twin Bridges Public Library, 206 So. Main, Twin Bridges, MT 59754. Closing date is February 25, 2016 at 6:00 pm. 16-2-b

## The Madisonian.

The Madisonian is in search of the newest addition to our team!  
**Customer Relations and Project Coordinator**  
The successful candidate will be:  
•A Madison County lover!  
•A people-lover  
•Self-motivated, driven and energetic  
•Organized with excellent time management skills  
•Creative and eager to learn  
•A team player that can see the big picture  
This position is part time with the potential for full time. Must have a valid drivers license. The Madisonian offers a competitive wage and other fun incentives. To learn more, stop by or email [s.hill@madisoniannews.com](mailto:s.hill@madisoniannews.com).

2015-16 TWIN BRIDGES SCHOOLS VACANCIES - IMMEDIATE!!

Twin Bridges Public Schools is currently seeking qualified applicants for the following position for the current 2015-16 school year and the upcoming 2016-17 school year:  
•Custodian - hours include afternoon and evenings; candidate must be energetic, self-motivated, work well with all people and possess a desire for exemplary performance. This individual must be willing to obtain the following licenses: asbestos management training, lead certified renovator, boiler license and basic first aid with CPR. Other duties may be assigned by the administration. Wages are DOE and benefits available.  
•Bus Drivers - we are currently seeking qualified bus drivers, or those who can become qualified, to substitute drive routes for Twin Bridges School District #7. This "substitute position" can ultimately grow into a full position by the fall of 2016.  
Please call Mr. Eldon Johnson at the school for further information and to request a district application. All prepared materials must be sent to the attention of the Superintendent at...  
Twin Bridges Public Schools  
PO Box 419  
Twin Bridges, MT 59754  
17-3-b

## JOB NOTICE:

The Madison County Fair Board is accepting applications until March 1, 2016, at 5:00 p.m. for the part-time position of Fair Secretary at the fairgrounds in Twin Bridges, Montana. This is a Short Term Position. Applicants must be flexible and available to work with very little notice. There is no guarantee of the number of hours per month. No benefits are included with the position. Interested candidates may obtain a job description and employment application by contacting the Madison County Fair Office at (406) 684-5824, via email at [mcfair@3rivers.net](mailto:mcfair@3rivers.net), or visit our website at [www.madison.mt.gov](http://www.madison.mt.gov). Please submit applications to the Madison County Fair, P.O. Box 414, Twin Bridges, MT 59754. Madison County is an equal opportunity employer. 17-2-b

Ruby Valley Hospital  
Full & Part-Time CNA  
Openings  
  
The Ruby Valley Hospital is accepting applications for a full and a part-time Certified Nurse's Aide. Please visit our website at [www.rubyvalley-hospital.com](http://www.rubyvalley-hospital.com) for details about this position. The Ruby Valley Hospital is an equal opportunity employer. 17-2-b

Place Your Classified  
**682-7755**

## WANTED

Reputable outfitter. Been in business 30+ years. Would like to lease a ranch for elk hunting. Call 682-7292. 16-2-b

Want to Buy  
Top dollar will be paid for 1979 blue rusted Ford 4WD pick up. Call 925-9865 16-4-cc

## FOR RENT

MADISON MANAGEMENT  
Vacation and Long Term Rentals  
570-5401  
[www.madisonmanagement.com](http://www.madisonmanagement.com)  
22-tfc

Studio apartment for rent in Ennis. Call Jamie 581-9219. 7-tfc-b

FOR RENT in Ennis 20 x 30 heated shops/storage. RV Storage also available. 581-7687. 1-tfc-b

FOR RENT- remodeled 2 br/1bath near McAllister. Available March 1st. \$650. deposit required. no smokers, no pets. references needed call 406-581-5574 35-tfc-b

FOR RENT: Large mobile home site 1 mile from Ennis. 100 x 150', water & sewer, country atmosphere, quiet. NO DOGS. 682-4854. 29-tfc

**BARKER VILLAGE APARTMENTS:**  
1 bedroom unfurnished apartments available in Ennis. A/C, washer/dryer equipped, private location. 1 year lease, \$650 per month plus security deposit, utilities included, non-smoking, no dogs. Call Erich Vogeli, Manager at 406-682-5737. 15-tfc

PETERSON'S DISCOUNT STORAGE Indoor & Outdoor RV/Boat storage, storage units. Ennis, 682-7442 18-tfc-b

ENNIS MINI STORAGE  
New low prices with 10 x 10's starting at \$35. Larger sizes available. Call Melinda at 596-4288. 15-tfc

**BARKER VILLAGE APARTMENTS:**  
1 bedroom furnished apartments available in Ennis. A/C, washer/dryer equipped, private location. 4 month lease, \$700 per month plus security deposit, utilities included, non-smoking, no dogs. Call Erich Vogeli, Manager at 406-682-5737. 15-tfc

FOR RENT: Call Apex Management at 682-7112 or 581-0103 for long term or vacation rentals in Ennis and the Madison Valley. 1-tfc

For Rent. Two story furnished studio guest house. Upper deck, heated garage and storage, W/D and kitchenette. 1 year lease \$750 per month utilities included. N/S No dogs. In Ennis. Call Erich 682-5737 35-tfc-b

## FOR SALE

LIQUIDATION SALE at COVERUPS Gifts & Embroidery, 110 E. Main, Ennis. 30%-70% off store wide. Open 10:00-3:00 Monday, Tuesday, Friday, Saturday. 406-682-7745. 16-3-b

Enviro EF-iii pellet stove. \$750. 770-722-3744 text only or 682-3300. 16-3-b

Place Your Classified  
**682-7755**

1992 Chevy Silverado pick up. Great condition. Great work truck. \$1000 OBO. If interested, call 843-5223. 14-1-b

FOR SALE, 13,000 OBO  
2006 Chevy Silverado Crew Cab 106,000 miles, 4WD, towing pkg cloth seats, great condition  
Contact:  
[pamela.polachi@comcast.net](mailto:pamela.polachi@comcast.net)  
14-4-b

## SERVICES

### Get Results

[s.hill@madisoniannews.com](mailto:s.hill@madisoniannews.com)

### Expert Tree Care

406-683-5592  
406-865-0000  
60' Lift Truck  
Fall & Winter is ideal removing and pruning time!

Madison Valley Caring & Sharing  
Hours:  
Mon. Noon-2:00 p.m.  
Sat. 9-11:00 a.m.  
Wed. 5-7 p.m.  
Lone Elk Mall, Unit 4, Ennis. 682-7844 30-tfc-b

## ESTATE SALES

Moving? Downsizing? Liquidating an Estate?  
  
We Buy & Sell Estates  
[AbleEstateSales.com](http://AbleEstateSales.com)  
Call Mike at 842-5251

## GARAGE SALE

Blue lazy boy recliner, round wooden table w/ leaf, large wicker chair, 3 dining room chairs on wheels, small kitchen table w/ two chairs, coffee and end tables, sewing machine and cabinet, mirrors, old spice cans, misc. kitchen items, craft books, knick-knack and ceramic gifts, ladybug wind chimes, two-wheel battery operated scooters, jewelry, record albums, wall decorations. 1 block south of Ennis Town Pump. Saturday February 20 10 am to 2 pm  
Info 682-4360 or 682-4045 17-1-b

**Ruby Valley Hospital Physical Therapy Occupational & Speech Therapy**  
*Hands on care for all your body needs.*

Orthopedic & Sports Injuries  
Total Joint Rehabilitation  
Back & Neck Care  
Sore Stressed Muscles  
Tension Headaches & Chronic Pain

Self Care  
Home Safety  
Adaptive Equipment  
Hand, Wrist - & Elbow Syndromes  
Neurological Rehabilitation

Available Mon.-Fri. at Ruby Valley Hospital  
220 E. Crofoot, Sheridan, MT 59749-9508 **406-842-5081**

**GRAHAM DRILLING**  
SHERIDAN, MT

**Water Well Drilling, Solar Pump Systems for Stock Water, Pump Sales Installation, Service & Repairs**

Serving Residential & Commercial Customers in Madison County for over 30 years

Quality Service at a Fair Price  
Phone (406) 842-5214 or (406)682-5290  
[WWW.GRAHAMDRILLING.COM](http://WWW.GRAHAMDRILLING.COM)

**D&D Auto, Inc.**  
AUTO & TRUCK SALES  
We Are YOUR Go to Guys!  
Auto & Truck Repair - Gas or Diesel - All Makes & Models

We Make Hydraulic Hoses  
New Tires, Wheels & Tire Repairs  
Engines & Transmissions Installed - Car & Truck Accessories  
We Install Windshields - Alignments

ENNIS • 682-4537  
Daily Parts Deliveries to Alder, Sheridan & Twin Bridges Areas  
**24 Hour Towing (CELL 406-570-9872)**

**OUTPOSTEVENTS.NET**  
Southwest Montana's EVENTS Calendar

**SHOP SPACE FOR RENT IN ENNIS**  
All sizes available up to 1,200 square feet  
Heated, insulated, large doors, half bath.  
Gary at 581-3531 or Paul at 581-7878

**Three Great Services Under One Roof!**

**MDM CONSTRUCTION** **GOT GUTTERS** **HIGH R INSULATION**

Locally Owned & Operated  
Free Estimates - Licensed & Insured

Call Mike McKitrick Today!  
**406-682-4529**  
100 Prairie Way #2 - Ennis, Mt 59729



# The Madisonian

## PUBLIC NOTICES

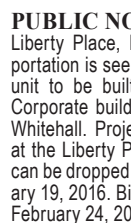
**NOTICE TO CREDITORS**  
MONTANA FIFTH JUDICIAL DISTRICT, MADISON COUNTY  
IN THE MATTER OF THE ESTATE OF KARLA M. BOYD,  
Deceased.  
Probate No. DP-29-2016-2  
Hon. Judge Loren Tucker  
NOTICE IS HEREBY GIVEN that the undersigned have been appointed personal representative of the above-named estate. All persons having claims against the said deceased are required to present their claims within four months after the first publication of this notice or said claims will be forever barred.  
Claims must either be mailed to Richenda A. Scott and Jon M. Scott, the personal representatives, return receipt requested, at P.O. BOX 154, Virginia City, Montana 59755-0154, or filed with the Clerk of the above-entitled Court.  
DATED this 19th day of January, 2016  
/s/ Richenda A. Scott  
Personal Representative  
/s/ Jon M. Scott  
Personal Representative  
(Pub. Feb. 4, 11, 18, 2016) lb  
MNAFLP

**NOTICE TO CREDITORS**  
MONTANA FIFTH JUDICIAL DISTRICT, MADISON COUNTY  
IN THE RE OF THE ESTATE OF LAURA THELMA BARIL, also known as THELMA BARIL,  
Deceased.  
Probate No. DP-29-2016-3  
That the undersigned has been appointed Personal Representative of the above-named estate. All persons having claims against said decedent are required to present their claims within four (4) months after the date of the first publication of this notice, or said claims will be forever barred.  
Claims must either be mailed to WILFRED B. BARIL, the Personal Representative, return receipt requested, at 21240 W. Sycamore Drive, Buckeye, AZ 85396, or filed with the Clerk of the above-entitled Court.  
DATED: January 12, 2016  
/s/ WILFRED B. BARIL  
Personal Representative  
STATE OF ARIZONA )  
:ss  
COUNTRY OF Maricopa )  
WILFRED B. BARIL, being first duly sworn, upon oath, deposes and says:  
That he has read the foregoing NOTICE TO CREDITORS and that the facts and matters contained therein are true, correct, accurate and complete to the best of his knowledge and belief. I make this declaration under penalty of perjury under the laws of the State of Montana.  
/s/ WILFRED B. BARIL  
Personal Representative  
SUBSCRIBED AND SWORN to before me this 12th day of January, 2016.  
/s/ Brenda Rodriguez  
Notary Public for the State of Arizona  
Residing at: Buckeye, Arizona  
My Commission expires: July 13, 2019 (SEAL)  
Personal Representative's Attorney:  
Karen McMullin  
Post Office Box 55  
Ennis, MT 59729  
Telephone: (406) 682-7878  
(Pub. Feb. 4, 11, 18, 2016) km  
MNAFLP

**NOTICE OF TRUSTEE'S SALE**  
THE FOLLOWING LEGALLY DESCRIBED TRUST PROPERTY TO BE SOLD FOR CASH AT TRUSTEE'S SALE. Notice is hereby given that the undersigned Successor Trustee will, on June 8, 2016 at the hour of 02:00 PM, sell at public auction to the highest bidder for cash, the interest in the following described real property which the Grantor has or had power to convey at the time of execution by him of the said Deed of Trust, together with any interest which the Grantor or his successors in interest acquired after the execution of said Deed of Trust, to satisfy the obligations thereby secured and the costs and expenses of sale, including reasonable charges by the Successor Trustee, at the following place:  
North Entrance of the Madison County Courthouse, 110 East Wallace, Virginia City, MT 59755  
John A. "Joe" Solseng, a member of the Montana state bar, of Robinson Tait, P.S. is the duly appointed Trustee under and pursuant to the Deed of Trust in which Reid L. Rosenthal, as Grantor, conveyed said real property to Fidelity National title Ins. Comp., A California Corp. as Trustee, to secure an obligation owed to MORTGAGE ELECTRONIC REGISTRATION SYSTEMS, INC., SOLELY AS NOMINEE FOR HOMECOMINGS FINANCIAL NETWORK, INC., its successor and assigns, Beneficiary of the security instrument, said Deed of Trust which is dated October 31, 2005 and was recorded on November 17, 2005 as Instrument No. 110237 BOOK 547 PAGE 313, of official records in the Office of the Recorder of Madison County, Montana.  
The Deed of Trust encumbers real property ("Property") located at 308 South Main Street, Sheridan, MT 59749 and being more fully described as follows:  
THE LAND REFERRED TO IN THIS COMMITMENT IS DESCRIBED AS FOLLOWS: REAL PROPERTY LOCATED IN THE COUNTY OF MADISON, STATE OF MONTANA, LEGALLY DESCRIBED AS FOLLOWS: LOT 8 IN BLOCK 13 OF THE ORIGINAL TOWNSITE OF SHERIDAN, ACCORDING TO THE OFFICIAL AMENDED PLAT OF THE SURVEY THEREOF NOW ON FILE AND OF RECORD IN THE OFFICE OF THE COUNTY CLERK AND RECORDER, MADISON COUNTY, MONTANA  
The beneficial interest under said Deed of Trust and the obligations secured thereby are presently held by Deutsche Bank Trust Company Americas, as Trustee for Residential Accredited Loans, Inc., Mortgage Asset-Backed Pass-Through Certificates, Series 2005-QA13.  
The Beneficiary has declared the Grantor in default of the terms of the Deed of Trust and the Promissory Note ("Note") secured by said Deed of Trust due to Grantor's failure to timely pay all monthly installments of principal, interest and if applicable, escrow reserves for taxes and/or insurance as required by the Note and Deed of Trust. The default for which foreclosure is made is grantors' failure to pay when due the following sums: monthly payments of \$5,499.99 beginning June 1, 2014; plus interest due of \$4,379.62; plus escrow payment of \$4,153.38; together with title expense, costs, trustee's fees and attorney's fees incurred herein by reason of said default; any further sums advanced by the beneficiary for the protection of the above described real property and its interest therein; and prepayment penalties/premiums, if applicable.  
By reason of said default, the beneficiary has declared all sums owing on the obligation

secured by said trust deed immediately due and payable, said sums being the following, to wit: \$91,117.50 with interest thereon at the rate of 2.87500 percent per annum beginning May 1, 2014; plus uncollected late charges of \$282.23; plus escrow advances of \$3,996.08; plus property inspection fee of \$228.75; plus title search of \$430.00; plus other foreclosure fees and costs of \$1,931.00; plus other costs of \$101.56; together with title expense, costs, trustee's fees and attorney's fees incurred herein by reason of said default; any further sums advanced by the beneficiary for the protection of the above described property and its interest therein; and prepayment penalties/premiums, if applicable.  
Due to the defaults stated above, the Beneficiary has elected and has directed the Trustee to sell the above-described property to satisfy the obligation.  
Notice is further given that any person named has the right, at any time prior to the date last set for the sale, to have this foreclosure proceeding dismissed and the Deed of Trust reinstated by making payment to the Beneficiary of the entire amount then due (other than such portion of the principal as would not then be due had no default occurred) and by curing any other default complained of herein that is capable of being cured by tendering the performance required under the obligation or to cure the default, by paying all costs and expenses actually incurred in enforcing the obligation and Deed of Trust, together with Successor Trustee's and attorney's fees. If the Trustee is unable to convey title for any reason, the successful bidder's sole and exclusive remedy shall be the return of monies paid to the Successor Trustee and the successful bidder shall have no further recourse.  
DATED: January 22, 2016  
/s/ John A. "Joe" Solseng  
John A. "Joe" Solseng, a member of the Montana state bar, Attorney of Robinson Tait, P.S., MSB #11800  
(Pub. Feb. 4, 11, 18, 2016) RTps  
MNAFLP

**PUBLIC NOTICE**  
Liberty Place, Inc./Whitehall Public Transportation is seeking bids for a 3 bus storage unit to be built behind Liberty Place, Inc. Corporate building at 313 W. Legion Ave in Whitehall. Project details can be picked up at the Liberty Place, Inc. office. Sealed bids can be dropped off before 12:00pm on February 19, 2016. Bids will be formally opened on February 24, 2016 at 1:00pm.

 (Pub. Feb. 4, 11, 18, 2016) wpt  
MNAFLP

**NOTICE TO CREDITORS**  
MONTANA FIFTH JUDICIAL DISTRICT, MADISON COUNTY  
IN THE RE OF THE ESTATE OF WILLIAM RICHARD STRUCKMAN, also known as WILLIAM R. STRUCKMAN,  
Deceased.  
Probate No. DP-29-2016-4  
That the undersigned has been appointed Personal Representative of the above-named estate. All persons having claims against said decedent are required to present their claims within four (4) months after the date of the first publication of this notice, or said claims will be forever barred.  
Claims must either be mailed to DOLORES V. STRUCKMAN, the Personal Representative, return receipt requested, at P.O. Box 1438, Ennis, MT 59729, or filed with the Clerk of the above-entitled Court.  
DATED: January 22, 2016  
/s/ DOLORES V. STRUCKMAN  
Personal Representative  
STATE OF MONTANA )  
:ss  
COUNTRY OF MADISON )  
DOLORES V. STRUCKMAN, being first duly sworn, upon oath, deposes and says:  
That she has read the foregoing NOTICE TO CREDITORS and that the facts and matters contained therein are true, correct, accurate and complete to the best of her knowledge and belief. I make this declaration under penalty of perjury under the laws of the State of Montana.  
/s/ DOLORES V. STRUCKMAN  
Personal Representative  
SUBSCRIBED AND SWORN to before me this 22nd day of January, 2016.  
/s/ Karen McMullin  
Notary Public for the State of Montana  
Residing at: Ennis  
My Commission expires: 9/14/2019 (SEAL)  
Personal Representative's Attorney:  
Karen McMullin  
Post Office Box 55  
Ennis, MT 59729  
Telephone: (406) 682-7878  
(Pub. Feb. 4, 11, 18, 2016) km  
MNAFLP

**NOTICE THAT A TAX DEED MAY BE ISSUED**  
TO THE FOLLOWING INTERESTED PARTIES (REGARDING THE REAL PROPERTY DESCRIBED BELOW) WHOSE CURRENT ADDRESSES ARE UNKNOWN:  
Tim Stasnos; Estate of Tim Stasnos; Olga Mihopoulos; Christos Stasnos; Mike Mihopoulos; Any Assigns, Successors, Personal Representatives, Heirs, Devisees or Beneficiaries of or to the Above Parties; and Any Other Parties Claiming an Interest, Whether Legal or Equitable in the Real Property Described Below.  
Pursuant to section 15-18-212, Montana Code Annotated, NOTICE IS HEREBY GIVEN:  
1. As a result of a property tax delinquency, a property tax lien exists on the following described real property in which you may have an interest (Madison County Tax Parcel/ID No. 19319200):  
Madison County Treasurer's Abbreviated Legal Description:  
SECTION: 15 TOWNSHIP: 03S RANGE: 03W  
ACRES 14.68, MERCURY SUR 10799 ME 0681  
GEOCODE: 25-0690-15-3-02-01-0000  
Full Legal Description:  
THE MERCURY PATENTED LODE MINING CLAIM, A PORTION OF SURVEY NO. 10799, MORE PARTICULARLY DESCRIBED IN PATENT, HAVING A BLM PATENT NUMBER 1120769, EMBRACING A PORTION OF SECTIONS 15 AND 16, TOWNSHIP 3 SOUTH, RANGE 3 WEST, P.M.M., MADISON COUNTY, MONTANA, ACCORDING TO PATENT RECORDED AS DOCUMENT NO. 165135, RECORDS OF MADISON COUNTY, MONTANA.  
2. The 2011 property taxes (second half) became delinquent on June 1, 2012.  
3. The property tax lien was attached as the result of a tax lien sale held on July 16, 2012.  
4. The property tax lien was purchased at a tax lien sale on July 17, 2012, by: Madison County, 103 W. Wallace Street, P.O. Box 247, Virginia City, MT 59755.  
5. The lien was subsequently assigned on August 13, 2012, to: Eric J. Bashore, P.O. Box 80242, Billings, MT 59108.  
6. As of February 11, 2016, the amount of tax due is:  
TAXES: \$20.00  
PENALTY: \$4.40  
INTEREST: \$5.17  
COST: \$365.97  
TOTAL: \$391.54  
NOTE: Interest continues to accrue at a rate of 5/6 of 1% per month.  
7. For the property tax lien to be liquidated, the total amount listed in paragraph 6, plus any subsequent accrued interest and any other applicable subsequent taxes, penalties, interest and costs due, must be paid by April 18, 2016, which is the date that the redemption period expires or expired.  
8. If all taxes, penalties, interest, and costs are not paid to the county treasurer on or prior to April 18, 2016, which is the date the redemption period expires, or on or prior to the date on which the county treasurer will otherwise issue a tax deed, a tax deed may be issued to the purchaser/assignee on the day following the date that the redemption period expires or on the date the county treasurer will otherwise issue a tax deed.  
9. The business address and telephone number of the county treasurer who is responsible for issuing the tax deed is: Madison County Treasurer, 103 W. Wallace Street, P.O. Box 247, Virginia City, MT 59755, Telephone: (406) 843-4212.  
FURTHER NOTICE FOR THOSE PERSONS /ENTITIES LISTED ABOVE WHOSE ADDRESSES ARE UNKNOWN:  
1) The address of the interested party is unknown.  
2) The published notice meets the legal requirements for notice of a pending tax deed issuance.  
3) The interested party's rights in the property may be in jeopardy.  
DATED at Ennis, Montana this 11th day of February, 2016.  
By: /s/ Eric J. Bashore, P.O. Box 80242, Billings, MT 59108  
(Pub. Feb. 11, 18, 2016) eb  
MNAFLP

**NOTICE THAT A TAX DEED MAY BE ISSUED**  
TO THE FOLLOWING INTERESTED PARTIES (REGARDING THE REAL PROPERTY DESCRIBED BELOW) WHOSE CURRENT ADDRESSES ARE UNKNOWN:  
Tim Stasnos; Estate of Tim Stasnos; Olga Mihopoulos; Christos Stasnos; Mike Mihopoulos; Any Assigns, Successors, Personal Representatives, Heirs, Devisees or Beneficiaries of or to the Above Parties; and Any Other Parties Claiming an Interest, Whether Legal or Equitable in the Real Property Described Below.  
Pursuant to section 15-18-212, Montana Code Annotated, NOTICE IS HEREBY GIVEN:  
1. As a result of a property tax delinquency, a property tax lien exists on the following described real property in which you may have an interest (Madison County Tax Parcel/ID No. 19319200):  
Madison County Treasurer's Abbreviated Legal Description:  
SECTION: 15 TOWNSHIP: 03S RANGE: 03W  
ACRES 14.68, MERCURY SUR 10799 ME 0681  
GEOCODE: 25-0690-15-3-02-01-0000  
Full Legal Description:  
THE MERCURY PATENTED LODE MINING CLAIM, A PORTION OF SURVEY NO. 10799, MORE PARTICULARLY DESCRIBED IN PATENT, HAVING A BLM PATENT NUMBER 1120769, EMBRACING A PORTION OF SECTIONS 15 AND 16, TOWNSHIP 3 SOUTH, RANGE 3 WEST, P.M.M., MADISON COUNTY, MONTANA, ACCORDING TO PATENT RECORDED AS DOCUMENT NO. 165135, RECORDS OF MADISON COUNTY, MONTANA.  
2. The 2011 property taxes (second half) became delinquent on June 1, 2012.  
3. The property tax lien was attached as the result of a tax lien sale held on July 16, 2012.  
4. The property tax lien was purchased at a tax lien sale on July 17, 2012, by: Madison County, 103 W. Wallace Street, P.O.

Box 247, Virginia City, MT 59755.  
5. The lien was subsequently assigned on August 13, 2012, to: Eric J. Bashore, P.O. Box 80242, Billings, MT 59108.  
6. As of February 11, 2016, the amount of tax due is:  
TAXES: \$20.00  
PENALTY: \$4.40  
INTEREST: \$5.17  
COST: \$365.97  
TOTAL: \$391.54  
NOTE: Interest continues to accrue at a rate of 5/6 of 1% per month.  
7. For the property tax lien to be liquidated, the total amount listed in paragraph 6, plus any subsequent accrued interest and any other applicable subsequent taxes, penalties, interest and costs due, must be paid by April 18, 2016, which is the date that the redemption period expires or expired.  
8. If all taxes, penalties, interest, and costs are not paid to the county treasurer on or prior to April 18, 2016, which is the date the redemption period expires, or on or prior to the date on which the county treasurer will otherwise issue a tax deed, a tax deed may be issued to the purchaser/assignee on the day following the date that the redemption period expires or on the date the county treasurer will otherwise issue a tax deed.  
9. The business address and telephone number of the county treasurer who is responsible for issuing the tax deed is: Madison County Treasurer, 103 W. Wallace Street, P.O. Box 247, Virginia City, MT 59755, Telephone: (406) 843-4212.  
FURTHER NOTICE FOR THOSE PERSONS /ENTITIES LISTED ABOVE WHOSE ADDRESSES ARE UNKNOWN:  
1) The address of the interested party is unknown.  
2) The published notice meets the legal requirements for notice of a pending tax deed issuance.  
3) The interested party's rights in the property may be in jeopardy.  
DATED at Ennis, Montana this 11th day of February, 2016.  
By: /s/ Eric J. Bashore, P.O. Box 80242, Billings, MT 59108  
(Pub. Feb. 11, 18, 2016) eb  
MNAFLP

**NOTICE OF TRUSTEES SALE**  
TO BE SOLD FOR CASH AT TRUSTEE'S SALE ON April 8, 2016, at 11:00 o'clock A.M. at the front door of the Madison County Courthouse located at 110 West Wallace

Street in Virginia City, MT 59755, the following described real property situated in Madison County, Montana:  
Lot 2 of Ramshorn Mountain Estates Minor Subdivision, a portion of the NW ¼ NE¼ of section 18, Township 5 South, Range 4 West, P.M.M., according to the official plat thereof filed in Book 4 of plats, Page 260, Records of Madison County, Montana, excepting therefrom that portion conveyed to the State Water Conservation Board of the State of Montana by Document Recorded in Book 147, Page 45, together with the Improvements, Tenements, Hereditaments, and Appurtenances thereto.  
Jason R Schwend and Liza M Schwend, as Grantor(s), conveyed said real property to Charles J Peterson, Attorney, as Trustee, to secure an obligation owed to Countrywide Bank, FSB, as Beneficiary, by Deed of Trust dated January 14, 2008 recorded January 29, 2008 under Document No 124282. The beneficial interest is currently held by Green Tree Servicing LLC. First American Title Company, LLC, is the Successor Trustee pursuant to a Substitution of Trustee recorded in the office of the Clerk and Recorder of Madison County, Montana.  
The beneficiary has declared a default in the terms of said Deed of Trust by failing to make the monthly payments due in the amount of \$1,927.17, beginning December 1, 2014, and each month subsequent, which monthly installments would have been applied on the principal and interest due on said obligation and other charges against the property or loan. The total amount due on this obligation as of June 17, 2015 is \$221,007.20 principal, interest at the rate of 6.375% totaling \$8839.53, late charges in the amount of \$458.16, escrow advances of \$1701.94 plus accruing interest at the rate of \$38.61 per diem, late charges, and other costs and fees that may be advanced.  
The Beneficiary anticipates and may disburse such amounts as may be required to preserve and protect the property and for real property taxes that may become due or delinquent, unless such amounts of taxes are paid by the Grantors. If such amounts are paid by the Beneficiary, the amounts or taxes will be added to the obligations secured by the Deed of Trust. Other expenses to be charged against the proceeds of this sale include the Trustee's fees and attorney's fees, costs and expenses of the sale and late charges, if any. Beneficiary has elected, and has directed the Trustee to sell the above described property to satisfy the obligation.  
The sale is a public sale and any person, including the beneficiary, excepting only the Trustee, may bid at the sale. The bid price must be paid immediately upon the close of bidding in cash or cash equivalents (valid money orders, certified checks or cashier's checks). The conveyance will be made by Trustee's Deed without any representation or warranty, including warranty of Title, express or implied, as the sale is made strictly on an as-is, where-is basis, without limitation, the sale is being made subject to all existing conditions, if any, of lead paint, mold or other environmental or health hazards. The sale purchaser shall be entitled to possession of the property on the 10th day following the sale.  
The grantor, or any other person having an interest in the property, at any time prior to the trustee's sale, may pay to the beneficiary or the successor in interest to the beneficiary the entire amount then due under the deed of trust and the obligation secured thereby (including costs and expenses actually incurred and attorney's fees) other than such portion of the principal as would not then be due had no default occurred and thereby cure the default.  
The scheduled Trustee's Sale may be postponed by public proclamation up to 15 days for any reason, and in the event of a bankruptcy filing, the sale may be postponed by the trustee for up to 120 days by public proclamation at least every 30 days.  
THIS IS AN ATTEMPT TO COLLECT A DEBT. ANY INFORMATION OBTAINED WILL BE USED FOR THAT PURPOSE.  
DATED: December 10, 2015  
Dalia Martinez  
Assistant Secretary,  
First American Title Company, LLC  
Successor Trustee  
Title Financial Specialty Services  
PO Box 339  
Blackfoot ID 83221  
STATE OF Idaho  
 )  
 ) ss.  
 ) County of Bingham  
 )  
On this 10 day of December, 2015 before me, a notary public in and for said County and State, personally appeared Dalia Martinez, known to me to be the Assistant Secretary of First American Title Company, LLC, Successor Trustee, known to me to be the person whose name is subscribed to the foregoing instrument and acknowledged to me that she executed the same.  
Shannon Gavin  
Notary Public  
Bingham County, Idaho  
Commission expires: 01/19/2018  
Green Tree V Schwend 42072.406  
(Pub. Feb. 11, 18, 25, 2016) mk  
MNAFLP

**NOTICE THAT A TAX DEED MAY BE ISSUED**  
TO THE FOLLOWING INTERESTED PARTIES (REGARDING THE REAL PROPERTY DESCRIBED BELOW) WHOSE CURRENT ADDRESSES ARE UNKNOWN:  
Tim Stasnos; Estate of Tim Stasnos; Olga Mihopoulos; Christos Stasnos; Mike Mihopoulos; Any Assigns, Successors, Personal Representatives, Heirs, Devisees or Beneficiaries of or to the Above Parties; and Any Other Parties Claiming an Interest, Whether Legal or Equitable in the Real Property Described Below.  
Pursuant to section 15-18-212, Montana Code Annotated, NOTICE IS HEREBY GIVEN:  
1. As a result of a property tax delinquency, a property tax lien exists on the following described real property in which you may have an interest (Madison County Tax Parcel/ID No. 19319300):  
Madison County Treasurer's Abbreviated Legal Description:  
SECTION: 15 TOWNSHIP: 03S RANGE: 03W  
ACRES 14.68, MANHATTAN SUR 10799 ME 0681  
GEOCODE: 25-0690-15-3-01-01-0000  
Full Legal Description:  
THE MANHATTAN PATENTED LODE MINING CLAIM, A PORTION OF SURVEY NO. 10799, MORE PARTICULARLY DESCRIBED IN PATENT, HAVING A BLM PATENT NUMBER 1120769, EMBRACING A PORTION OF SECTIONS 15 AND 16, TOWNSHIP 3 SOUTH, RANGE 3 WEST, P.M.M., MADISON COUNTY, MONTANA, ACCORDING TO PATENT RECORDED AS DOCUMENT NO. 165135, RECORDS OF MADISON COUNTY, MONTANA.  
2. The 2011 property taxes (second half) became delinquent on June 1, 2012.  
3. The property tax lien was attached as the result of a tax lien sale held on July 16, 2012.  
4. The property tax lien was purchased at a tax lien sale on July 17, 2012, by: Madison County, 103 W. Wallace Street, P.O. Box 247, Virginia City, MT 59755.  
5. The lien was subsequently assigned on August 13, 2012, to: Eric J. Bashore, P.O. Box 80242, Billings, MT 59108.  
6. As of February 11, 2016, the amount of tax due is:  
TAXES: \$20.00  
PENALTY: \$4.40  
INTEREST: \$5.17  
COST: \$365.97  
TOTAL: \$391.54  
NOTE: Interest continues to accrue at a rate of 5/6 of 1% per month.  
7. For the property tax lien to be liquidated, the total amount listed in paragraph 6, plus any subsequent accrued interest and any other applicable subsequent taxes, penalties, interest and costs due, must be paid by April 18, 2016, which is the date that the redemption period expires or expired.  
8. If all taxes, penalties, interest, and costs are not paid to the county treasurer on or prior to April 18, 2016, which is the date the redemption period expires, or on or prior to the date on which the county treasurer will otherwise issue a tax deed, a tax deed may be issued to the purchaser/assignee on the day following the date that the redemption period expires or on the date the county treasurer will otherwise issue a tax deed.  
9. The business address and telephone number of the county treasurer who is responsible for issuing the tax deed is: Madison County Treasurer, 103 W. Wallace Street, P.O. Box 247, Virginia City, MT 59755, Telephone: (406) 843-4212.  
FURTHER NOTICE FOR THOSE PERSONS /ENTITIES LISTED ABOVE WHOSE ADDRESSES ARE UNKNOWN:  
1) The address of the interested party is unknown.  
2) The published notice meets the legal requirements for notice of a pending tax deed issuance.  
3) The interested party's rights in the property may be in jeopardy.  
DATED at Ennis, Montana this 11th day of February, 2016.  
By: /s/ Eric J. Bashore, P.O. Box 80242, Billings, MT 59108  
(Pub. Feb. 11, 18, 2016) eb  
MNAFLP

**NOTICE OF TRUSTEES SALE**  
THE TOWN OF TWIN BRIDGES HAS RECEIVED NOTICE OF THE AWARD OF COMMUNITY DEVELOPMENT BLOCK GRANT FUNDS FROM THE MONTANA DEPARTMENT OF COMMERCE. TOWN OF TWIN BRIDGES WILL SOON COMMENCE IMPLEMENTATION OF THE UPDATING THE TOWN OF TWIN BRIDGES SUBDIVISION REGULATIONS PROJECT.  
CDBG REGULATIONS GOVERNING THE GRANT REQUIRE THAT TO THE GRANT'S EXTENT FEASIBLE, OPPORTUNITIES FOR TRAINING AND EMPLOYMENT ARISING IN CONNECTION WITH THIS CDBG ASSISTED PROJECT WILL BE EXTENDED TO LOCAL LOW INCOME RESIDENT. FURTHER, TO THE GREATEST EXTENT FEASIBLE, BUSINESS CONCERNS LOCATED IN OR SUBSTANTIALLY OWNED BY RESIDENTS OF THE AREA WILL BE UTILIZED.  
FOR MORE INFORMATION, PLEASE CONTACT MAYOR TOM HYNDMAN AT PO. BOX 307 TWIN BRIDGES, MT, OR CALL (406) 596-1312  
(Pub. Feb. 11, 18, 2016) tobt  
MNAFLP

**NOTICE OF TRUSTEES SALE**  
THE TOWN OF TWIN BRIDGES HAS RECEIVED NOTICE OF THE AWARD OF COMMUNITY DEVELOPMENT BLOCK GRANT FUNDS FROM THE MONTANA DEPARTMENT OF COMMERCE. TOWN OF TWIN BRIDGES WILL SOON COMMENCE IMPLEMENTATION OF THE UPDATING THE TOWN OF TWIN BRIDGES SUBDIVISION REGULATIONS PROJECT.  
CDBG REGULATIONS GOVERNING THE GRANT REQUIRE THAT TO THE GRANT'S EXTENT FEASIBLE, OPPORTUNITIES FOR TRAINING AND EMPLOYMENT ARISING IN CONNECTION WITH THIS CDBG ASSISTED PROJECT WILL BE EXTENDED TO LOCAL LOW INCOME RESIDENT. FURTHER, TO THE GREATEST EXTENT FEASIBLE, BUSINESS CONCERNS LOCATED IN OR SUBSTANTIALLY OWNED BY RESIDENTS OF THE AREA WILL BE UTILIZED.  
FOR MORE INFORMATION, PLEASE CONTACT MAYOR TOM HYNDMAN AT PO. BOX 307 TWIN BRIDGES, MT, OR CALL (406) 596-1312  
(Pub. Feb. 11, 18, 2016) tobt  
MNAFLP

**NOTICE OF TRUSTEES SALE**  
THE TOWN OF TWIN BRIDGES HAS RECEIVED NOTICE OF THE AWARD OF COMMUNITY DEVELOPMENT BLOCK GRANT FUNDS FROM THE MONTANA DEPARTMENT OF COMMERCE. TOWN OF TWIN BRIDGES WILL SOON COMMENCE IMPLEMENTATION OF THE UPDATING THE TOWN OF TWIN BRIDGES SUBDIVISION REGULATIONS PROJECT.  
CDBG REGULATIONS GOVERNING THE GRANT REQUIRE THAT TO THE GRANT'S EXTENT FEASIBLE, OPPORTUNITIES FOR TRAINING AND EMPLOYMENT ARISING IN CONNECTION WITH THIS CDBG ASSISTED PROJECT WILL BE EXTENDED TO LOCAL LOW INCOME RESIDENT. FURTHER, TO THE GREATEST EXTENT FEASIBLE, BUSINESS CONCERNS LOCATED IN OR SUBSTANTIALLY OWNED BY RESIDENTS OF THE AREA WILL BE UTILIZED.  
FOR MORE INFORMATION, PLEASE CONTACT MAYOR TOM HYNDMAN AT PO. BOX 307 TWIN BRIDGES, MT, OR CALL (406) 596-1312  
(Pub. Feb. 11, 18, 2016) tobt  
MNAFLP

**NOTICE OF TRUSTEES SALE**  
THE BOARD OF MADISON COUNTY COMMISSIONERS WILL NOT BE HOLDING THEIR REGULAR COMMISSION MEETING ON MONDAY, FEBRUARY 22, 2016, AS THEY WILL BE ATTENDING A COURT HEARING AT THE MADISON COUNTY COURTHOUSE IN VIRGINIA CITY, MT. THE NEXT REGULAR MEETING FOLLOWING THIS DATE WILL BE HELD ON MONDAY, FEBRUARY 29, 2016.  
(Pub. Feb. 11, 18 2016) mcc  
MNAFLP

**PUBLIC NOTICE**  
THE BOARD OF MADISON COUNTY COMMISSIONERS WILL NOT BE HOLDING THEIR REGULAR COMMISSION MEETING ON MONDAY, FEBRUARY 22, 2016, AS THEY WILL BE ATTENDING A COURT HEARING AT THE MADISON COUNTY COURTHOUSE IN VIRGINIA CITY, MT. THE NEXT REGULAR MEETING FOLLOWING THIS DATE WILL BE HELD ON MONDAY, FEBRUARY 29, 2016.  
(Pub. Feb. 11, 18 2016) mcc  
MNAFLP

**NOTICE OF TRUSTEES SALE**  
THE FOLLOWING LEGALLY DESCRIBED TRUST PROPERTY TO BE SOLD FOR

CASH AT TRUSTEE'S SALE. Notice is hereby given that the undersigned Successor Trustee will, on May 20, 2016 at the hour of 02:00 PM, sell at public auction to the highest bidder for cash, the interest in the following described real property which the Grantor has or had power to convey at the time of execution by him of the said Deed of Trust, together with any interest which the Grantor or his successors in interest acquired after the execution of said Deed of Trust, to satisfy the obligations thereby secured and the costs and expenses of sale, including reasonable charges by the Successor Trustee, at the following place:  
Madison County Courthouse, North Entrance of the Madison County Courthouse, 110 East Wallace, Virginia City, MT 59755  
John A. "Joe" Solseng, a member of the Montana state bar, of Robinson Tait, P.S. is the duly appointed Trustee under and pursuant to the Deed of Trust in which Stephen H. Ellis, an unmarried man as Grantor, conveyed said real property to MONTANA TITLE AND ESCROW, INC. as Trustee, to secure an obligation owed to MORTGAGE ELECTRONIC REGISTRATION SYSTEMS, INC., SOLELY AS NOMINEE FOR IRWIN MORTGAGE CORPORATION, Beneficiary of the security instrument, said Deed of Trust which is dated May 1, 2006 and was recorded on May 8, 2006 as Instrument No. 113142, of official records in the Office of the Recorder of Madison County, Montana.  
The Deed of Trust encumbers real property ("Property") located at 833 S 2nd St, Ennis, MT 59729 and being more fully described as follows:  
LOT 4A AS SHOWN AND DESCRIBED ON THE AMENDED PLAT OF LOTS 4 AND 5, BLOCK 3 OF ARMITAGE'S DEER MEADOW ADDITION TO THE TOWN OF ENNIS, AS SAID PLAT IS FILED IN PLAT BOOK 2, PAGE 142, RECORDS OF MADISON COUNTY, MONTANA.  
The beneficial interest under said Deed of Trust and the obligations secured thereby are presently held by Deutsche Bank Trust Company Americas, as Trustee for Residential Accredited Loans, Inc., Mortgage Asset-Backed Pass-Through Certificates, Series 2006-QS10.  
The Beneficiary has declared the Grantor in default of the terms of the Deed of Trust and the Promissory Note ("Note") secured by said Deed of Trust due to Grantor's failure to timely pay all monthly installments of principal, interest and if applicable, escrow reserves for taxes and/or insurance as required by the Note and Deed of Trust. The default for which foreclosure is made is grantors' failure to pay when due the following sums: monthly payments of principal, interest and escrow totaling \$51,709.92 beginning June 1, 2014; less a suspense balance of \$1.89; together with title expense, costs, trustee's fees and attorney's fees incurred herein by reason of said default; any further sums advanced by the beneficiary for the protection of the above described real property and its interest therein; and prepayment penalties/premiums, if applicable.  
By reason of said default, the beneficiary has declared all sums owing on the obligation secured by said trust deed immediately due and payable, said sums being the following, to wit: \$316,562.38 with interest thereon at the rate of 4.63 percent per annum beginning May 1, 2014; plus escrow advances of \$14,602.97; less a suspense balance of \$1.89; plus property inspection fees of \$235.00; plus late fees of \$668.08; plus deferred principal balance of \$159,860.07; plus other fees and costs in the amount of \$2,885.06; together with title expense, costs, trustee's fees and attorney's fees incurred herein by reason of said default; any further sums advanced by the beneficiary for the protection of the above described property and its interest therein; and prepayment penalties/premiums, if applicable.  
Due to the defaults stated above, the Beneficiary has elected and has directed the Trustee to sell the above-described property to satisfy the obligation.  
Notice is further given that any person named has the right, at any time prior to the date last set for the sale, to have this foreclosure proceeding dismissed and the Deed of Trust reinstated by making payment to the Beneficiary of the entire amount then due (other than such portion of the principal as would not then be due had no default occurred) and by curing any other default complained of herein that is capable of being cured by tendering the performance required under the obligation or to cure the default, by paying all costs and expenses actually incurred in enforcing the obligation and Deed of Trust, together with Successor Trustee's and attorney's fees. If the Trustee is unable to convey title for any reason, the successful bidder's sole and exclusive remedy shall be the return of monies paid to the Successor Trustee and the successful bidder shall have no further recourse.  
DATED: December 17, 2015  
/s/ John A. "Joe" Solseng  
John A. "Joe" Solseng, a member of the Montana state bar, of Robinson Tait, P.S., MSB #11800  
(Pub. Feb. 18, 25 and Mar. 3 2016) rt  
MNAFLP

**NOTICE OF TRUSTEES SALE**  
THE FOLLOWING LEGALLY DESCRIBED TRUST PROPERTY TO BE SOLD FOR CASH AT TRUSTEE'S SALE. Notice is hereby given that the undersigned Successor Trustee will, on May 20, 2016 at the hour of 02:00 PM, sell at public auction to the highest bidder for cash, the interest in the following described real property which the Grantor has or had power to convey at the time of execution by him of the said Deed of Trust, together with any interest which the Grantor or his successors in interest acquired after the execution of said Deed of Trust, to satisfy the obligations thereby secured and the costs and expenses of sale, including reasonable charges by the Successor Trustee, at the following place:  
Madison County Courthouse, North Entrance of the Madison County Courthouse, 110 East Wallace, Virginia City, MT 59755  
John A. "Joe" Solseng, a member of the Montana state bar, of Robinson Tait, P.S. is the duly appointed Trustee under and pursuant to the Deed of Trust in which Stephen H. Ellis, an unmarried man as Grantor, conveyed said real property to MONTANA TITLE AND ESCROW, INC. as Trustee, to secure an obligation owed to MORTGAGE ELECTRONIC REGISTRATION SYSTEMS, INC., SOLELY AS NOMINEE FOR IRWIN MORTGAGE CORPORATION, Beneficiary of the security instrument, said Deed of Trust which is dated May 1, 2006 and was recorded on May 8, 2006 as Instrument No. 113142, of official records in the Office of the Recorder of Madison County, Montana.  
The Deed of Trust encumbers real property ("Property") located at 833 S 2nd St, Ennis, MT 59729 and being more fully described as follows:  
LOT 4A AS SHOWN AND DESCRIBED ON THE AMENDED PLAT OF LOTS 4 AND 5, BLOCK 3 OF ARMITAGE'S DEER MEADOW ADDITION TO THE TOWN OF ENNIS, AS SAID PLAT IS FILED IN PLAT BOOK 2, PAGE 142, RECORDS OF MADISON COUNTY, MONTANA.  
The beneficial interest under said Deed of Trust and the obligations secured thereby are presently held by Deutsche Bank Trust Company Americas, as Trustee for Residential Accredited Loans, Inc., Mortgage Asset-Backed Pass-Through Certificates, Series 2006-QS10.  
The Beneficiary has declared the Grantor in default of the terms of the Deed of Trust and the Promissory Note ("Note") secured by said Deed of Trust due to Grantor's failure to timely pay all monthly installments of principal, interest and if applicable, escrow reserves for taxes and/or insurance as required by the Note and Deed of Trust. The default for which foreclosure is made is grantors' failure to pay when due the following sums: monthly payments of principal, interest and escrow totaling \$51,709.92 beginning June 1, 2014; less a suspense balance of \$1.89; together with title expense, costs, trustee's fees and attorney's fees incurred herein by reason of said default; any further sums advanced by the beneficiary for the protection of the above described real property and its interest therein; and prepayment penalties/premiums, if applicable.  
By reason of said default, the beneficiary has declared all sums owing on the obligation secured by said trust deed immediately due and payable, said sums being the following, to wit: \$316,562.38 with interest thereon at the rate of 4.63 percent per annum beginning May 1, 2014; plus escrow advances of \$14,602.97; less a suspense balance of \$1.89; plus property inspection fees of \$235.00; plus late fees of \$668.08; plus deferred principal balance of \$159,860.07; plus other fees and costs in the amount of \$2,885.06; together with title expense, costs, trustee's fees and attorney's fees incurred herein by reason of said default; any further sums advanced by the beneficiary for the protection of the above described property and its interest therein; and prepayment penalties/premiums, if applicable.  
Due to the defaults stated above, the Beneficiary has elected and has directed the Trustee to sell the above-described property to satisfy the obligation.  
Notice is further given that any person named has the right, at any time prior to the date last set for the sale, to have this foreclosure proceeding dismissed and the Deed of Trust reinstated by making payment to the Beneficiary of the entire amount then due (other than such portion of the principal as would not then be due had no default occurred) and by curing any other default complained of herein that is capable of being cured by tendering the performance required under the obligation or to cure the default, by paying all costs and expenses actually incurred in enforcing the obligation and Deed of Trust, together with Successor Trustee's and attorney's fees. If the Trustee is unable to convey title for any reason, the successful bidder's sole and exclusive remedy shall be the return of monies paid to the Successor Trustee and the successful bidder shall have no further recourse.  
DATED: December 17, 2015  
/s/ John A. "Joe" Solseng  
John A. "Joe" Solseng, a member of the Montana state bar, of Robinson Tait, P.S., MSB #11800  
(Pub. Feb. 18, 25 and Mar. 3 2016) rt  
MNAFLP

**NOTICE OF TRUSTEES SALE**  
THE FOLLOWING LEGALLY DESCRIBED TRUST PROPERTY TO BE SOLD FOR CASH AT TRUSTEE'S SALE. Notice is hereby given that the undersigned Successor Trustee will, on May 20, 2016 at the hour of 02:00 PM, sell at public auction to the highest bidder for cash, the interest in the following described real property which the Grantor has or had power to convey at the time of execution by him of the said Deed of Trust, together with any interest which the Grantor or his successors in interest acquired after the execution of said Deed of Trust, to satisfy the obligations thereby secured and the costs and expenses of sale, including reasonable charges by the Successor Trustee, at the following place:  
Madison County Courthouse, North Entrance of the Madison County Courthouse, 110 East Wallace, Virginia City, MT 59755  
John A. "Joe" Solseng, a member of the Montana state bar, of Robinson Tait, P.S. is the duly appointed Trustee under and pursuant to the Deed of Trust in which Stephen H. Ellis, an unmarried man as Grantor, conveyed said real property to MONTANA TITLE AND ESCROW, INC. as Trustee, to secure an obligation owed to MORTGAGE ELECTRONIC REGISTRATION SYSTEMS, INC., SOLELY AS NOMINEE FOR IRWIN MORTGAGE CORPORATION, Beneficiary of the security instrument, said Deed of Trust which is dated May 1, 2006 and was recorded on May 8, 2006 as Instrument No. 113142, of official records in the Office of the Recorder of Madison County, Montana.  
The Deed of Trust encumbers real property ("Property") located at 833 S



continued from page B3

child. "I know everybody's name. Ho ho ho." I saw that he was in a pickle and starting to sweat, so I made a remark about the limited time we had left and the number of kids Santa still had to see, and handed him a bag of candy for the suspicious girl. He gave it to her and she left, still with a cynical look on her face.

This is when our little red headed buddy tried to get back to Santa for a second time. I spotted his attempt to cut the line and pulled him aside where I asked him what he thought he was doing. He replied that

he'd forgotten to mention one of the gifts that he really wanted badly to Santa and needed to tell him. I explained that he couldn't cut the line, as that wouldn't be fair to the other kids who were patiently waiting for their turns. I said that by going to the end of the line, he could have another pow wow with Santa. This wasn't the response he'd been looking for and he started a somewhat heated debate, but I held steadfast and spun him around and headed him back towards the end of the line. I went back to my duties of

handing sacks of candy to Santa who doled them out as soon as he finished taking their orders. I remember turning to my right and darned if the little red headed demon wasn't now standing between Santa and myself. I scooped him up again and sent him on his way for a second time. As I watched him disappear into the audience he was still pleading his case. I figured I had resolved the problem and returned to my responsibilities. Not two minutes later, I looked at Santa and on his far right side I saw the kid whispering in his ear. I had to give the young'un an A for his tenacity, as the little bugger had flanked me twice and outwitted any clout I'd

previously had. I had no other options than to watch as Red drifted back into the crowd wearing a satisfied smile.

A couple weeks later, while sitting at my mother's house having our weekly drink, I told my story of the unruly urchin and received multiple laughs. My mother had a serious look on her face so I questioned her as to her staunch look. She replied, "You have no idea what a bad kid is, as you were worse than your subject by a multiple of 10." After her comment it came to me why the little red headed devil had looked so familiar. I was looking back at myself in years past, and that's why I revered him so.

# Get the Good News!



## Madison Valley Lenten Schedule:



The following is a breakfast schedule. Meal served each Wednesday at 6:30 a.m. for an hour of fellowship and worship.

Wednesday, February 17: Madison Valley Presbyterian Church in Ennis.

Wednesday, February 24: Madison Valley Baptist Church in Ennis.

Wednesday, March 2: Assembly of God Church in Ennis

Wednesday, March 9: Trinity Episcopal Church in Jeffers

Wednesday, March 16: St. Patrick's Catholic Church in Ennis

## Ruby Valley Lenten Schedule:



Breakfast schedule is at 7 a.m. each Wednesday, followed by a short time of worship and reflection.

Wednesday, February 17: Mountain View Chapel in Twin Bridges.

Wednesday, February 24: Christ Episcopal Church in Sheridan.

Wednesday, March 2: St. Mary's Catholic Church in Laurin.

Wednesday, March 9: Dayspring Church on Hwy 287 in Sheridan.

Wednesday, March 16: Notre Dame Catholic Church in Twin Bridges.

**Ruby Valley Baptist Church**  
 Tony Shaw, Pastor  
 842-5602

Sunday School 9:45 a.m.  
 Worship Service 11 a.m.  
 Sunday Evening 6 p.m.  
 Wednesday Eve 7 p.m.

One block behind IGA, Sheridan



# Find Fellowship With Us

**Rocky Mountain Baptist Church**  
 682-4949

Sunday School 9:30 a.m.  
 Morning Worship 11 a.m.  
 Evening Service 6 p.m.  
 Mid-Week Service, Wednesday 6 p.m.

606 Comley Way, Ennis  
 6 Blocks South of City Complex

Located in the heart of Madison Valley for the Hearts of Madison Valley

**Dayspring Church**  
 Worship 10:00 a.m.  
 Sunday School/Nursery  
**Non-Denominational Christ Centered, Spirit Led Worship**  
 Joel Trenkle/Pastor  
 Check website for ministries: dayspringsheridan.com

596-0707 • 3648 Hwy 287  
 Between Sheridan & Twin Bridges

**HARRISON COMMUNITY CHURCH**  
 Harrison, Montana

Adult Bible Study ~ 9:30 a.m.  
 Sunday School & Church Services ~ 10:30 a.m.

Pastor Joe Miller  
 Come Worship & Sing Praises To Our God. Spread the Word!

**CHURCH OF JESUS CHRIST OF LATTER-DAY SAINTS**  
 Sheridan Ward - Visitors Welcome

Sacrament Meeting  
 Sundays, 10:00 a.m.  
 Sunday School  
 11:20 a.m.

R S & Priesthood  
 12:10 p.m.  
 Mutual (Youth Group)  
 Weds. 7:00p.m.  
 3560 | MT State Hwy 287  
 Sheridan 842-5860  
 Bishop Dustin 684-5255

**Liturgy Schedule**

**St. Patrick, Ennis**  
 Sunday ~ 10:30 a.m.

**St. Mary, Laurin**  
 Sunday ~ 8:30 a.m.  
 Deacon Andy Dorrington,  
 Pastoral Administrator ~ 842-5588

**Shepherd of the Hills Lutheran Church**  
 The Church of Word and Sacrament  
 Visitors Welcome

Pastor Ken Stensrud

- Sunday Service 9:00 am
- Bible Study 10:15 am
- Sunday School 10:15 am

Corner of Madison and Arnette St.  
 Ennis, Montana 406-682-4900

**Madison Valley Presbyterian Church**  
 WORSHIP  
 September - April ~ 11 a.m.  
 May - August ~ 9 a.m.  
**Everyone Welcome Fully Accessible**  
 Rev. Jean M. Johnson  
 682-4355 ~ Ennis  
 Corner of S. Charles & W. Hugel

**FISHERS OF MEN**  
 HOLDING FORTH THE WORD OF LIFE

**Dr. Ray Teston**  
 Pastor  
 Sunday School ~ 9:45 a.m.  
 Morning Worship ~ 11:00 a.m.

5050 Hwy 287, PO Box 668, Ennis, MT  
 Phone 682-4244 SBC  
**MADISON VALLEY BAPTIST CHURCH**  
 Aides for the hearing impaired

**CHURCH OF JESUS CHRIST OF LATTER-DAY SAINTS**  
 Ennis Branch

Sacrament Meeting  
 10:00 a.m.  
 Sunday School  
 11:20 a.m.  
 R S & Priesthood  
 12:10 p.m.

Family History Center  
 682-4911, 682-7415, 682-3614  
 Pres. Thompson 682-7415  
 133 MT Hwy 287

**Christian Science Society**  
 Sunday Service & Sunday School 10 a.m.

**ALL WELCOME**

Each week a Bible lesson full of healing Christian concepts is read aloud in our Sunday service.

4983 US Hwy 287 N. • Ennis, Montana  
 www.spirituality.com

**NEW BEGINNINGS CHRISTIAN FELLOWSHIP**  
 Your Local Assembly of God Church

114 N. Main, Sheridan  
 842-5845

Pastor Duane Deshner

Sunday Service  
 10:30 a.m. (Children's Ministry)

Wednesday (Kids/Youth)  
 6:30-8:00 p.m.

Kid's Club (3 yrs-4th grade)  
 Pre-Teen Youth Group (5th-6th grade)  
 Youth Group (7th-12th grade)

Ruby Valley Food Pantry  
 Saturdays: 10:00 a.m.-Noon

We are a church dedicated to serving this valley!

**Ruby Valley United Methodist Parish**  
 Invites You To Worship With Us

Lay Leader: Dave Reintsma  
 (406) 594-3287  
 Office: (406) 842-5934  
 Home: (406) 842-7732

**Church of the Valley Twin Bridges**  
 Sunday School 11:00 a.m.  
 Worship 11:00 a.m.  
 Youth Group Weds at 6:30 pm

**Bethel UMC Sheridan**  
 Worship 9:00 a.m.  
 Sunday School 10:15 a.m.  
 Youth Group Sunday evenings

**Ready Set Grow Preschool**  
 Contact Kaycee Gilman 842-5311

**THE BAHAI FAITH**

Do not allow difference of opinion, or diversity of thought to separate you from your fellow-men, or to be the cause of dispute, hatred and strife in your hearts.

Rather, search diligently for the truth and make all men your friends.

451-3923 or 1-800-UNITE  
 www.baha'i.org

**ENNIS ASSEMBLY OF GOD**  
 Loving God, Loving People

**SUNDAY SERVICE**  
 Christian Ed 9:45 am  
 Morning Worship 10:45 am  
 (Nursery & Children's Church)  
 Pastor Greg Ledgerwood

**WEDNESDAY SCHEDULE**  
 Snack & Yack 6:30 pm  
 Family Night 7:8:15 pm  
 (Prayer meeting, Women's bible study, youth group, kids groups)

402 Madison Ave - Ennis, MT  
 682-4197

**Madison County Episcopal Churches**  
 In full communion with the Evangelical Lutheran Church in America

**Join Us for Sunday Worship!**

<b>Trinity</b> Jeffers/Ennis 11:00 a.m.	<b>St. Paul's</b> Virginia City Sunday 9:00 a.m.	<b>Christ Church</b> Sheridan Sunday 10:00 a.m. Bible Study 9:00 a.m.
---	--	--

www.rvec.org  
 Prayer requests: 682-4788 843-5296 842-7713

**GRACE COMMUNITY FELLOWSHIP**  
 In Association with The Conservative Baptists of America

SERVICE AT ALDER SCHOOL AT 10 AM WITH SUNDAY SCHOOL FOLLOWING

Christ-centered, Bible Based Teaching, Open Question Forum

Tel. 406-842-5915  
 Pastor Tom Luksha

# AREA SENIOR MEALS

**SENIOR MEALS, VIRGINIA CITY**  
 Winter Senior meals for Madison County Seniors 60 and over will be served at the Virginia City Cafe on Thursdays (through May 2016) from 11:30 am to 12:30 for \$3.50.

**MEALS FOR SENIORS, TWIN BRIDGES**  
 The TBS&CC provides meals for seniors every Tuesday and Friday at 11:30 a.m. at the Wagon Wheel Restaurant in Twin Bridges for seniors 60 years and up. (Spouse and caregivers are invited.) Donations for meals are appreciated.

**RUBY VALLEY FOOD PANTRY, SHERIDAN**  
 Open Saturdays from 10 a.m. - noon. Located at 114 N. Main St. in New Beginnings. Serving the Ruby Valley from Silver Star to Virginia City. Contact Sandy at 842-7843 or Wannetta at 842-5783 for more information.

**MEALS ON WHEELS, SHERIDAN**  
 The Sheridan Senior Center offers meals for seniors 60 years and over Monday - Friday. Seniors may choose to eat at the senior center, family style for \$3.50 or have their meal delivered for \$4.00. Delivered meals are within the city limits of Sheridan and should be called in by 10 a.m. Call Shirley Sand at 842-5966.

# Get Results.

People are reading. Advertise your business or event today!

**madisoniannews.com**

**King Crossword**  
 Answers  
 Solution time: 25 mins.

E	P	I	C	D	A	B	G	A	L	A
R	E	T	I	C	U	L	A	R	I	D
G	A	S	P	E	D	A	L	S	E	E
H	I	S	D	Y	L	A	N	S		
I	M	P	E	L	S	H	O			
N	E	A	R	S	T	E	N	G	E	L
D	O	R	S	T	R	A	D	M	O	W
W	A	G	E	R	E	D	R	I	C	E
A	V	O	W	B	F	L	I	F		
A	R	I	S	E	N	P	A	M		
C	O	N	J	G	A	S	L	I	G	H
M	A	N	E	E	L	S	I	N	O	R
E	R	S	T	R	E	T	D	O	S	E

**ALCOHOLICS ANONYMOUS**  
 Meeting Every Thurs. at 8 p.m., Church of the Valley, Twin Bridges  
**ALANON MEETING**  
 Same Time - Same Place

**ALANON**  
 Twin Bridges • Church of the Valley  
 Thursdays, 8 pm

**ALANON**  
 Pony School House • Weds. 7 pm  
 Suzy 685-3692

**"Keep it Simple."**  
**A.A. MEETING**  
 Bethany Hall, Sheridan  
 (behind Methodist Church)  
**Wednesdays ~ 8 p.m.**

**Vennis Over The Hill Unity Group**  
 Faced with a drinking problem? Perhaps Alcoholics Anonymous Can Help.  
 SUZAN - 10 a.m., No Smoking, Virginia City Library  
 MON. - Open, 7:30 p.m., Basement of M.V. Presbyterian Church, No Smoking  
 WED. - 7:30 p.m., Trinity Church in Jeffers  
 FRI. - Open, 7:30 p.m., Basement of M.V. Presbyterian Church, No Smoking  
 682-3490, 682-7023 Ennis  
 843-5352 Virginia City

**Celebrate Recovery**  
 Meets every Saturday at 6 p.m. & starts with a meal.

**DAYSRING MISSION**  
 3648 Hwy 287, Sheridan  
 596-0707



# Ask the Expert

Local businesses have the information you need to make a variety of decisions. Best of all, they are here and available to meet your needs. In our "Ask the Experts" section, we went to these local experts for information on topics important to you.

Ask the Expert forum appears the second Thursday of each month. If you have questions for these area professionals e-mail us at [editor@madisoniannews.com](mailto:editor@madisoniannews.com).

## ADVERTISING

**Q:** Why should I invest in advertising?

**A:** Not advertising is like winking at a girl in the dark. You know what you are doing – but no one else does.

Advertising reminds existing customers about you and brings new people in the door. Sure, networking is great and important, as is signage, and location, and social media, and customer service, and word of mouth... But, advertising is the route with potentially the biggest payoff.

**Advertising turns the light on** – it lets people know you are out there and that you want their business.

### Why should you advertise in The Madisonian?

Our readership is up over 30%. We reach more area residents and visitors than any other local media. Contact us today to find out how our print and online advertising solutions can help your business thrive!

### GET RESULTS!

THE MADISONIAN • 406-682-7755



## EYE CARE

**Q:** What is Age-Related Macular Degeneration and how can I decrease my risk of having it?

**A:** Age-Related Macular Degeneration (AMD) is the number one cause of severe vision loss in adults over age 60. This devastating condition affects the central vision of approximately 15 million Americans. AMD is the gradual but persistent breakdown of the macula, which is the part of the eye that provides sharp, central vision. Over time, this deterioration affects the ability to perform daily tasks. Early warning signs include straight lines appearing distorted, or the center of your vision becoming distorted, as well as dark, blurry areas or white "floaters" appearing in the center of vision and, very rarely, diminished or changed color perception. Reducing your risk can be simple. Avoid smoking, exercise regularly, maintain normal blood pressure and cholesterol, and eat a healthy diet that includes green leafy vegetables and fish. Early detection is the most important step to preventing any serious vision loss; so yearly eye exams and discussing any changes in your vision with your eye doctor are key.



### Dr. Jeff Squire

EYES ON MAIN • 406-577-2380

## HEALTH CARE

**Q:** What is a "rolled ankle" injury?

**A:** The most common of ankle injuries is when the sole of the foot "rolls" inward, toward the midline of the body. A few ligaments on the outside of the ankle may be damaged or torn (sprained) during this motion. You may hear or feel a pop, snap or crack which could be the fracturing of a bone or a sprain.

As with knee injuries, RICE should be performed to decrease pain and swelling immediately. This is important!

If you cannot bear weight for four or more steps, have severe pain touching the bones of the lower leg, ankle and outside of the foot, seek medical attention right away to rule out a fracture.

If a sprain is diagnosed, the ankle may be stabilized with a boot. Right after healing, start Physical Therapy to regain strength and range of motion. Otherwise, the ankle will remain in a weakened state, predisposing you to further damage or reoccurring ankle sprains.



### Drew Chambers, PA-C

RUBY VALLEY CLINICS  
SHERIDAN 842-5056 • TWIN BRIDGES 684-5546

## PHYSICAL THERAPY

**Q:** What is posture?

**A:** Posture is a position we carry ourselves in when sitting, reaching, standing, and walking.

Prolonged holding your head forward in sitting/standing may elicit headaches/neck pain. Slouching, (i.e. tips of our shoulders forward) can cause neck/back/shoulder pain. Leaning more to one side with standing or walking can cause aches, pains and balance problems.

Improving posture would be easy if we were symmetrical. We are not aligned equally. Our diaphragm is lower on the right. The majority of individuals are right handed, which adds to the slouching and leaning to the right. Simple activities like tucking your chin with shoulders back and sticking out your chest can help. Posture can affect the neck/head/shoulder/hand all the way down to the big toe.

Posture/alignment of the human body is complex. Management/treatment requires an experienced healthcare provider. I have more than 20 years of experience with postural education/strengthening. The ONLY EXPERT in the MADISON VALLEY for your physical therapy needs.

### Robert (Bob) Sahli, PTATCLAT

ENNIS PHYSICAL THERAPY PC • 406-682-3112



## BIRDING

**Q:** Why do birds throw so much seed on the ground?

**A:** Probably you are feeding mixed seed. If it's a quality blend, it contains white proso millet, which is preferred by ground-feeding birds such as junco's and sparrows. If you are feeding inexpensive birdseed, it is likely old and may contain up to 75% filler that is not eaten by feeder birds. As seed is stored, the quality goes down. Suppliers will sell this old seed to discounters who package it up and sell it to cheap stores. Birds know the difference between good seed and bad seed. They pick up and weigh each seed before eating it. They also taste it. They know if it's moldy or rancid and cast it aside. Feed them good quality seed and this will not happen as much. Just like grocery shopping, consider the cost on a pound per pound basis and you will find a more "expensive" seed is actually cheaper per pound. Don't waste your money.



### Debi Naccarto, Owner

WILD BIRDS UNLIMITED • 406-219-2066

## INSURANCE

**Q:** What Coverage does a business owner need to consider?

**A:** Business insurance policies come in many forms to cover many needs.

Several factors determine what coverage you'll need and the rate you'll pay, such as the nature of your business, whether you operate from a commercial building or home office and whether you have employees. Below are the most common types of coverage that small businesses need:

- General Liability
- Property Insurance
- Workers Compensation
- Business Interruption
- Commercial Auto
- Inland Marine
- Life Insurance for owners or key persons
- Disability Insurance

Don't leave your business unprotected. When you're ready to shop for small business insurance, get instant access to top business insurance companies and the most competitive option by contacting Agency Insurance Division at 682-4202 or find us on the web at [www.insuringthe406.com](http://www.insuringthe406.com).

### Ty Moline, Agent, CISR

THE AGENCY INSURANCE DIVISION • 406-682-4202



## FITNESS

**Q:** Why is protein important?

**A:** Protein is an essential part of your daily diet. Not only does it build muscle and maintain healthy bones and teeth, but it also provides energy. Not all protein is created equally, though. The quality of the protein you consume is based on the mix of amino acids (the building blocks of protein) and how easily the protein can be digested and absorbed. A protein needs all 9 amino acids to be considered a "complete" protein. Additionally, the time of day you consume your protein matters. Most people eat less protein at breakfast than at any other meal. Ideally, you should eat around 25-30 grams of protein per meal. If you don't wish to consume that much protein, breakfast should be your main meal for protein intake. Your body can only process and use so much at a time, so if it's spread throughout the day you will receive the maximum benefit. Healthy, high in protein foods include: Greek yogurt, cottage cheese, Swiss cheese, eggs, 2% milk, soy milk, steak, 98% lean ground beef, chicken and tuna.

Madison Square Athletic Club  
406-682-4560

**Madison Square Athletic Club**



## REAL ESTATE

**Q:** How should I proceed in looking for real estate when my agent refuses to show me a property listed by another office?

**A:** Unfortunately, this is a scenario that happens in our profession and in our community. Since real estate agents are paid on a commission, an agent can be more financially successful if he/she sells one of his/her own listings. An individual office also benefits financially when this happens. Yes, there will be a number of times a buyer will purchase a property listed by an agent in the same office in which the buyers' agent works. However, refusing to show a property listed with another office is poor real estate practice. Agents have a responsibility to not discriminate against properties. My advice to you would be to ask yourself if the agent you are currently working with has your best interests in mind. Ask your agent if he/she works cooperatively with other offices. If you still feel uncomfortable or concerned about how you are being represented, call an agent who will represent you honestly.



### Tanya Matson, Sales Professional

BERKSHIRE HATHAWAY • 406-580-6987

## HOME IMPROVEMENT

**Q:** What are the benefits of using LED light bulbs instead of conventional bulbs.

**A:** One of the main benefits of using LED bulbs is their long life. Instead of looking at about 3000 hours of life with a regular bulb, an LED bulb can give up to 20 years of life. A second benefit is energy efficiency. For example, a regular 60 watt bulb uses 60 watts of energy while a 60 watt equivalent LED uses approximately 8-12 watts of energy and provides the same or better brightness. A typical incandescent bulb operates at about 20 percent energy efficiency, which means 80 percent of the energy is given off in the form of heat. A comparable LED bulb operates at about 80 percent efficiency. You can think of LED bulbs as an investment. Although the cost upfront is higher, over the long term you'll save money on your electricity bill, you'll enjoy less heat production and a much longer bulb life.

### Ennis True Value

6 SUNRISE LOOP • 406-682-4015



## YOUR EXPERTISE

**Q:** A question frequently asked by your customers.

**A:** Sell your service, your business or your product! This is your opportunity to provide your current and future customers with accurate, valuable information about your business.

Your Photo Here

Something new about your business you would like to promote? This is a great way to do accomplish that, too. Don't miss your chance to secure this platform for your area of expertise.

Call 682-7755  
or email [s.hill@madisoniannews.com](mailto:s.hill@madisoniannews.com)  
to reserve this space!

Your Name, Your Title  
YOUR BUSINESS NAME • XXX-XXX-XXXX

# Ask the Expert



# Ruby Valley Hospital receives \$500,000 donation toward new medical facility

Submitted by Les Gilman  
RUBY VALLEY HOSPITAL FOUNDATION

After a 10-year planning process, the campaign for the new Ruby Valley Hospital and Medical Center in Sheridan just notched another success.

On Friday, Feb. 12, the Ruby Valley Hospital Foundation announced it received a gift of \$500,000 toward the campaign for the new Ruby Valley Hospital and Medical Center.

Jim Kennedy, a part-time Ruby Valley resident, made the contribution to the campaign through his foundation. Kennedy, who owns a ranch in the Ruby Valley, is the chairman of Cox Enterprises, a communications, media and automotive services company based in Atlanta, Ga. Drawn to the Ruby Valley's natural beauty and the warmth of the community, Kennedy and his family spend considerable time at their Ruby Valley ranch.

"We are thrilled with Mr. Kennedy's generous gift and what it means for healthcare in the Ruby Valley," said Les Gilman, chairman of the foundation's board of directors. "This gift really reflects his commitment to this community and the importance of the hospital campaign."

The campaign for the new Ruby Valley Hospital and Medical Center is a \$2.5 million community-driven initiative to build a new medical facility with added clinic and emergency medical space, x-ray and diagnostic equipment and major improvements in efficiency, privacy and comfort. Construction will begin this summer on land already owned by the foundation, near the current Ruby Valley Hospital in Sheridan.

With Kennedy's gift, the largest single gift to date to the hospital campaign, the campaign has raised \$2.3

million toward the goal.

"This effort is about caring for our community," said John Semingson, chief executive officer of the Ruby Valley Hospital. "Mr. Kennedy's gift shows just how committed our community is to caring for one another."

Kennedy and his family are no strangers to supporting the communities they have called home. He is a noted philanthropist who supports conservation projects in addition to health and wellness initiatives, including efforts that help advance patient centered care models and cancer research. He was diagnosed and treated for prostate cancer in 2014 and became a vocal supporter for health awareness and early detection. Kennedy's financial support also helped build Barret Hospital in Dillon. In addition to his Montana healthcare support, Kennedy helped create a Health and Wellness Center

in connection with Tallahatchie County Hospital in Charleston, Miss. He is also a leading supporter of Emory University Medicine's new patient-centered care models, which are creating more streamlined and reliable care for patients and families. In 2003, Kennedy and his wife, Sarah, were named Philanthropists of the Year by the Greater Atlanta Chapter of the Association for Fundraising Professionals. Kennedy also serves on numerous non-profit boards.

In recognition of Kennedy's contribution, the physical therapy department in the new medical facility will be named in his honor.

"Access to healthcare is a critical need for everyone," said Gilman. "Mr. Kennedy's gift underscores the importance of preserving high-quality healthcare for the Ruby Valley for everyone who is lucky enough to spend time here."

**THE RED SHED**



GIFT SHOP SILVER STAR, MT  
**NEW INVENTORY ARRIVING DAILY!**

- OVER 500 DIFFERENT KNIVES
- OVER 100 PURSES AND 30+ WALLETS
- LOTS OF JEWELRY, SCARVES AND OTHER GREAT GIFTS


*All in our happy little cabin! • Closed Sunday • 684-5255*

**NORDIQUE SYSTEM LOG HOMES**



Dan Baker Post Office Box 1247  
Condon, MT 59826  
Cell: 406-677-4032 Ph: 406-754-LOGS (5647)  
Website: www.nordiqueloghomes.com Home: 406-754-2728  
Email: info@nordiqueloghomes.com Fax: 406-754-5648

"Stick With The Best!"



**BOWMAN APPLIANCE SERVICE**

1035 S. Main St. • Butte, Montana 59701  
**(406) 723-6797**

We Work On All Major Brands.

In Ennis, Sheridan and Twin Bridges and surrounding areas  
**EVERY WEDNESDAY**

## AROUND THE COUNTY

### Learn about historic barns in Montana

Submitted by Carol Delisi  
FRIENDS OF THE SHERIDAN PUBLIC LIBRARY

The Friends of the Sheridan Public Library will host Humanities Montana Speakers Bureau program, Hand-Raised: Historic Barns of Montana, with Chere Justo on Feb. 28 at the Sheridan Public Library at 5 p.m. The presentation is free and open to the public. Partial funding for the speakers bureau program is provided by a legislative grant from Montana's Cultural Trust and from the National Endowment for the Humanities.

The historic barns of Montana are a threatened part of our heritage. To capture their history and encourage their preservation, Justo, Christine Brown and photographer Tom Ferris collaborated on the book "Hand Raised: Historic Barns of Montana." The program includes an overview of Montana's barn-building history, stunning photographs of barns from across the state and the stories attached to some of Montana's most memorable, photogenic and historic barns.

For more information, please call the Sheridan Public Library at 842-5770.

### DUI signs

Submitted by Lynn Lowder  
MADISON COUNTY DUI TASK FORCE

Madison County DUI Task Force has had numerous people ask us where our "DUI You Can't Afford It" signs went. We still have our signs but with the changes in federal highway guidelines, the signs no longer met the needed requirements to be on state highways so the Montana Department of Transportation replaced them with signs that fit the new guidelines. Our task force did not have to pay for this new sign replacement so it was a win/win for us. Now we have twice the signs to help in the prevention of DUIs. We will be offering some of our old signs to interested places of business while they last. The remaining signs

will be placed on our county roads where they are allowed. If anyone is interested in having a sign in a certain spot in the county or at his or her business, please send an email request to mcdutaskforce@gmail.com.

### Ruby Valley FFA heads to Deer Lodge

Submitted by Rodney Braaten  
SHERIDAN SCHOOLS


Sydney Snider, Eastern Region Vice President of the National FFA Organization, will visit Deer Lodge on her tour of Montana during National FFA Week. She will be in Deer Lodge on Feb. 25 at 5 p.m., and the Ruby Valley FFA will travel to meet her and participate in National FFA Week. An open house with Snider will begin at 5 p.m. on Feb. 25 at the Elks Lodge in Deer Lodge – the public is invited and encouraged to attend as having a national FFA officer visit Montana is an infrequent occurrence.

### Call to artists

Submitted by Carol Clarkson  
ENNIS ARTS ASSOCIATION

The Ennis Arts Association will hold its 21st annual Madison Valley Arts Festival, Saturday, Aug. 13, 2016. Artists working in all media are invited to submit entries for this juried show.

The festival will take place in Peter T's Park, in attractive Ennis, on the historic trail between Yellowstone National Park and Virginia City. In addition to the artist booths, there will be live entertainment, delicious food, an art raffle, 50/50 raffle, meet the author book signing and children's face painting. For additional information and an application please contact jury committee chairman Carol Clarkson, 682-3834, email: pinccreekcarol@yahoo.com, or go to www.ennisartsassociation.org. Deadline for applications is April 8, 2016.



**20|Twenty Eyecare Services Include:**

- Vision & Eye Health Exams
- Children's Vision
- Latest Technology for Treatment of Eye Disease
- Contact Lenses
- Vision Therapy

**Come see our collection of over 20 designer frame brands.**

**20 | TWENTY**

522-8888  
280 W Kagy Blvd, Suite B, Bozeman, MT.  
www.20TwentyMT.com  
Most insurances accepted including VSP & EyeMed

**H.F. HARDY**

PAINTING & DECORATING

PPG PITTSBURGH PAINTS

Interior/Exterior • Painting/Staining  
Hardwood Floor Finishing  
Prefinishing of Mill Work  
Media Blasting • Chinking

PPG AND AKZO NOBEL PRODUCTS AVAILABLE AT OUR RETAIL STORE: THE PAINT DOCK

paintdock@3rivers.net  
842-5119 • Sheridan

**K&L Mortuaries & Crematory, Inc.**  
842-5731

*Continuing to build relationships and meet your funeral and cremation needs since 1964*

**Now Operating a Newly Installed Crematory To Meet Our Cremation Customer Needs**

Pre-need Services Available  
Twin Bridges ~ Ennis ~ Three Forks ~ Sheridan ~ Harrison ~ Whitehall ~ Boulder

**Sherwood Swanson Drywall Inc.**

Hanging Custom Textures      Finishing Painting

Office: (406)682-5438      Cell: (406)599-3524

**MOUNTAIN VIEW TV & SATELLITE**

dish DIRECTV

**ELECTRONIC SUPPLY**

(406) 682-7858  
(406) 596-1513  
mfmvw@3rivers.net

Jim Forsberg  
Mountain View TV & Satellite, Inc.  
6 Sunrise Loop Ste B  
Ennis, MT 59729



Submitted by Melody Clark  
Evangeline A. and her daughter Joni enjoy the birthday festivities.

## Celebrating Mardi Gras, birthdays and Valentine's Day

Submitted by Melody Clark

Madison Valley Manor residents had a fun but busy week. Residents traveled to

Bozeman to celebrate Mardi Gras by eating cajun food. The monthly birthday party included wonderful music from the Tune Tangles and the kids from ECCS

as well as local high school students brought valentines for the residents. The local Lion's Club hosted a fun party on Friday for Valentine's Day and residents

took a drive to the country to look at all the baby calves. Our future plans include a trip to West Yellowstone to visit the Grizzly and Wolf Discovery Center.



# OUTPOSTEVENTS.NET

**B10** Thursday, February 18, 2016

GO TO [outpostevents.net](http://outpostevents.net) FOR A COMPLETE LISTING OF EVENTS

## THURSDAY FEBRUARY 18

### Nonprofit management series, Dillon

Join the Montana Nonprofit Association's four-part nonprofit management series. These day-long workshops in Missoula and Dillon will give you the tools and templates you need to develop your organization into a stronger, more effective nonprofit. Please contact the University of Montana - Western campus for more information.

## FRIDAY FEBRUARY 19

### Retreat, Virginia City

Join us for The Virginia City Women Writer's Retreat and share a creative experience that will touch body and soul. Workshop leaders are Allyson Adams and Montana Poet Laureate Tami Haaland. Workshop is Friday-Sunday. Call 818-825-9750 for more information.

### Star party, Sheridan

Star gazing and help with setting up your telescope, weather permitting. Contact Joe at 842-7722 for more information.

## SATURDAY FEBRUARY 20

### Chautauqua, Virginia City

The Elling House Arts and Humanities center in Virginia City will be hosting a chautauqua program beginning at 7:30 p.m. There will be a potluck prior to the program, which begins at 6:30 p.m. Those interested in performing should call 843-5454.

### Avoiding violence class, Ennis

This is a six hour class that prepares you mentally and physically to read and anticipate a potentially dangerous situation and if necessary, to use your natural instincts to get away. This class will enable you to be aware of your mindset and those around you and is terrific for everyone, young children to elderly, men and women. Call 682-4540 for more information.

## SUNDAY FEBRUARY 21

### Brunch and bingo, Virginia City

Brunch includes eggs, pancakes, meat, fruit, coffee cake, coffee and mimosas. Come play bingo to get in the mood for the Super

Bowl later in the afternoon. Brunch starts at 10:30 a.m. and bingo starts at 11:30 a.m. at the Elks Lodge. Wear your team's logo. Proceeds benefit Elks Lodge #390 community charity projects.

## WEDNESDAY FEBRUARY 24

### Christian science testimony meeting, Ennis

You're invited to a healing meeting of fellowship and comfort; all faiths and backgrounds welcome. Hear an uplifting message followed by a sharing of healings and inspiring insights into the adventures of the divine Spirit in our lives beginning at 5:30 p.m. Will be held monthly, the last Wednesday of the month. Call Pam at 406-209-1897

for more information.

## THURSDAY FEBRUARY 25

### Discussion, Ennis

The Madison Valley History Association will present a program describing and discussing the McKees, a family that moved to the valley in 1896 and operated a farm near Jeffers. Begins at 4 p.m. at the Madison Valley Public Library.

### Mad Gals, Ennis

Monthly meeting at 12:30 p.m. at the Norris bar. Call in reservations by Feb. 22.

## SATURDAY FEBRUARY 27

Bee keeping 101, Ennis

An all day workshop featuring bee keeping and basics of honey production. Begins at 9 a.m. Contact Cori at 682-4258 for more information.

## SUNDAY FEBRUARY 28

### Lecture, Sheridan

The Friends of the Sheridan Public Library will host Humanities Montana Speakers Bureau program "Hand-Raised: Historic Barns of Montana" with Chere Justo. This conversation includes an overview of Montana's barn-building history, stunning photographs of barns from across the state and the stories attached to some of Montana's most memorable, photogenic and historic barns. Begins at 5 p.m.

## TUESDAY MARCH 1

### Gardening workshop, Ennis

We will cover seed selection for; storage, canning, freezing and dehydrating. Also covered will be timing for multiple plantings, what varieties will thrive in cooler early and late season plantings, as well as how to protect and enhance growing conditions for those shoulder seasons. Come prepared to share your successes and failures, so we can all learn how to produce tasty healthy food over a longer period of time. Call Cori at 682-4258 for more information.



## REGULAR WEEKLY EVENTS

### MONDAYS

**Commissioner's Meeting, Virginia City**  
Madison Co. Commissioners meet every Monday, unless noted, public welcome. 9:30 a.m. Annex Building

### TUESDAYS

**Madison County Mental Health Local Advisory Council, Virginia City**  
Meeting the first Tuesday of each month from 4:30 - 6:30 p.m. in County Commissioner's conference room in Broadway Annex.

**Ennis Arts Association, Ennis**  
Meet on the second Tuesday of every month at 10:30 a.m. [ennisartsassociation.org](http://ennisartsassociation.org)

**Children's Story & Craft Time, Virginia City**  
Every Tuesday at 10:30 a.m. at the Thompson Hickman Library.

**Movie Night, Virginia City**  
Movie Night at the Thompson-Hickman Madison County Library Every OTHER Tuesday night at 7:00 p.m. Please call 406-843-5346 to find out what is playing!

### WEDNESDAYS

**Tennis, Ennis**  
9 a.m. til 2p.m., come play tennis at the Madison Meadows Golf Course. All levels welcome.

**Open Sew, Ennis**  
Open Sew with the Quilt Guild- open to the public from 2-5pm at Madison Valley Public Library

**Open Table Tennis, Pony** 7 - 9 p.m.  
For all ages and skill levels - Two Tables At the Pony School

Info @ 685-3481

**TOPS, Ennis**  
Weekly weigh-ins are at 9 am. Meetings at 9:30 am. MVMC in downstairs conference room. Jeanne, 682-3299

**Books and Babies, Ennis**  
Madison Valley Public Library, 10:30 a.m. 682-7244

**Grief Support Group, Ennis**  
Everyone welcome. Meets every Wednesday, 5:30 p.m. Madison Valley Baptist Church

### THURSDAYS

**MV Women's Club FIRST THURS OF EA. MONTH**  
NO meetings June, July or August.

**MV Manor Auxiliary Meeting, Ennis SECOND THURS OF EA. MONTH**  
1 p.m., Madison Valley Manor SunRoom

### FRIDAYS

**Tennis, Ennis**  
9 a.m. til 2p.m., come play tennis at the Madison Meadows Golf Course. All levels welcome.

**Story Time, Ennis**  
Pre-K to Grade 2, 11 a.m. Madison Valley Public Library. 682-7244.

**Live Music, Ennis**  
Willie's Distillery hosts live music in the tasting room, 5:30 p.m.. See the weekly ad on this page for performers.

### FRIDAY-SATURDAY-SUNDAY

**Live Music - Norris**  
7 p.m. See the weekly ad on this page for weekly performers.

**Q. \$65 seems too good to be true, how can you afford to fly a patient for that?**  
**A. This program works because of the size of its membership base - Air MedCare has 1.8 million members. The full membership pays for the portion of your flight not covered by insurance.**

**Q. What restrictions do you have?**  
**A. With a full membership you have no restrictions. In fact, you don't even have to have insurance! It is a membership, not insurance and we won't cancel your membership for any reason.**

**Q. Is there a limit on flights?**  
**A. No, if the medical professionals decide you need to be flown for life and limb, we will take you wherever they tell us you need to go.**

**Q. How do I sign up?**  
**A. Easy! Call 1-800-793-0010 or go to [www.airmedcarenetwork.com](http://www.airmedcarenetwork.com).**

If you have questions, call David Stinar at (406)475-4152.

7:30AM - 6:30PM TUESDAY-FRIDAY

we'll make dinner... you take the credit

Check out our selection of frozen dinners to go

108 North Main, Sheridan 842-7999  
[theshovelandspoon.com](http://theshovelandspoon.com)

**THE OLD HOTEL**

WE are OPEN!

Join Us For  
Dinner: Thurs-Sat 5pm-9pm  
Brunch: Sun 9am-2pm  
Reservations suggested

Rustic Charm, Brilliant Cuisine in Twin Bridges...

101 E. 5th Avenue • Twin Bridges, MT  
[www.theoldhotel.com](http://www.theoldhotel.com)  
406-684-5959

**Christensen Rentals**

Landscape • Lawn & Garden Home Improvement & Construction

Rototillers, Power Rakes & Aerators  
Backhoe, Skidsteer & Mini Excavator

Ask about the weekend rate - pick up on Saturday by noon and return Monday morning for a 1 day rate!  
Call for availability!

Fall Hours: Mon.-Fri. 8:00 a.m. to 5:00 p.m. • Saturdays 8 a.m. to 12 p.m.  
406-682-4748 • 201 MADISON - ENNIS, MT

**LODGEPOLE JOHN**

OLD STYLE, HISTORIC JACK FENCE MADE THE WAY THE OLD TIMERS DID. JACKS HANDMADE. THE BEST HORSE FENCE. VERY EASY ON WILDLIFE.

581-3424 • [lpjohn@3rivers.net](mailto:lpjohn@3rivers.net) • [lodgepolejohn.com](http://lodgepolejohn.com)  
Acrylic paintings also available on my website.

**WILLIE'S DISTILLERY**

WILLIE'S DISTILLERY UPCOMING EVENTS:

302 S. MAIN STREET, ENNIS 406-682-4177  
[WWW.WILLIEDISTILLERY.COM](http://WWW.WILLIEDISTILLERY.COM)

EVERY FRIDAY WE HAVE LIVE MUSIC FROM 5:30 - 7:30 PM  
COME JOIN THE FUN, LISTEN TO SOME GREAT MUSIC AND ENJOY SPIRITS WITH A WESTERN FLAVOR!!

FRIDAY FEBRUARY 19TH: ED COYLE  
FRIDAY FEBRUARY 26TH: DAVE HORTON  
ASK ABOUT OUR WEEKLY BOTTLING PARTIES!!

**Join us on Facebook!**

and be the first to get breaking news.

[facebook.com/madisonian](http://facebook.com/madisonian)

**NORRIS HOT SPRINGS**

MUSIC THIS WEEKEND:

Fri 2/19 - Aaron Banfield  
Singer/Song Writer  
Sat 2/20 - Joe Schwem  
Original Folk/Rock  
Sun 2/21 - Coyote Gypsies  
Gypsy Americana

**HOURS:**  
Pool & Cafe (Sept - May)  
Thurs-Fri-Mon: 4-10 pm  
Sat-Sun: 12 noon-10 pm  
Closed Tues & Weds  
[norrishotsprings.com](http://norrishotsprings.com)  
406.685.3303