

# The Madisonian.

THE LOCAL NEWS OF THE MADISON VALLEY, RUBY VALLEY AND SURROUNDING AREAS

Montana's Oldest Publishing Weekly Newspaper. Established 1873

75¢ | Volume 143, Issue 43

www.madisoniannews.com

August 20, 2015

## SHERIDAN TOWN Council discusses potential skate park, grant for library/senior center, pool



Photo courtesy Debra McNeill  
Pool goes avoid the summer heat at the Ruby Valley Pool earlier this summer.

Abigail Dennis  
THE MADISONIAN  
a.dennis@madisoniannews.com

On Aug. 10 at the Sheridan town council meeting, the councilmembers heard from the community about a potential skate park, approved a Community Development Block Planning Grant (CDBG) and informed the town why the Ruby Valley Pool closed early this season.

**Skate park in town**  
A group of high school students approached the

town council with a presentation about their desire for a skate park in town.

"Basically, they were asking for city land," said Sheridan Mayor Tom Shaffer. "They have to have land in their possession to start applying for grants to build the actual (skate park)."

Shaffer said the idea is still preliminary – the town asked the group of students to put together a plan on how they want to fund, maintain and insure the park.

"We need to know the approximate size of land they need," Shaffer said. "We haven't gotten far enough to

suggest sites, but we have a few things in mind."

If the students stay dedicated to working on the project, Shaffer said he thinks it is a good idea.

"I think it would be a good thing for the town," he said. "I just hope the kids don't get bored with it and go back to using streets and sidewalks, which is what is currently going on."

**CDBG money**

Both Sheridan's senior center and library are in need of more room. For that reason, the two groups are combining forces to

construct one building that can serve as a home for seniors and provide extra library space.

"The intention is to build a library with a community room that can turn into a dining room for seniors," Shaffer said.

Rob Gilmore, with the Northern Rocky Mountain Economic Development District, said the senior center feeds 30 plus people on an average day.

"(The space is) a little bigger than a closet," Gilmore said. "And they then deliver another 30 meals to folks who

Turn to SHERIDAN on pg. 2

## Bus from Bozeman Commissioners discuss getting bus line from Bozeman to Ennis to VC

Abigail Dennis  
THE MADISONIAN  
a.dennis@madisoniannews.com

On Aug. 10, David Kack with Skyline Bus, met with the Madison County commissioners to discuss implementing a bus route from Bozeman to Virginia City with a stop in Ennis.

"This is part of an ongoing discussion," commissioner Jim Hart said. "The idea was brought to my attention in Ennis, initially. A resident in Ennis said, 'I like going to Virginia City but I don't want to worry about driving home.'"

Commissioner Dave Schulz said running a bus route as a trial for now might be a good idea.

"Maybe two days a month for a season, to see how much interest there is," Schulz said.

**Why Bozeman**

Hart said starting the route in Bozeman would be beneficial for a few reasons.

"First, we could advertise there and get people from the Bozeman area down here," he said.

Kack said the bus service is based out of Bozeman, so the buses could be kept there and maintenance would be easier that way.

"First we want to see interest, see if the communities would support it," Kack said. "Then we would move toward advertising. We could start in Bozeman, do a few trips back

and forth between Ennis and (Virginia City), then eventually back to Bozeman. Eventually, maybe we could expand service to some other communities."

Hart asked how the service would be funded.

"It would be a combination," Kack said. "We could implement a small fare. Or we could talk to the Montana Department of Transportation and there would be a possibility to get some money from them for a trial run next year."

Kack said the amount of local contribution, which he said could come from the towns' respective chambers, would be minimal – anywhere between \$5,000 and \$8,000, depending on how the bus routes will be run.

Kenzi Clark, director of the Ennis Chamber of Commerce, and Virginia City resident Kay Rossow were both in attendance at the meeting.

"It sounds like a good idea, but that sounds like a lot of money for a small chamber," Clark said. "We have tight budgets."

Clark also said she thinks the bus should leave Bozeman earlier in the day, because Ennis has a lot of daytime events.

"Otherwise you're missing out on a lot of families with kids who would want to spend a day down here and be back in Bozeman by 6 p.m.," she added.

Turn to BUS on pg. 2

## FIRES in the FOREST



Chris Mumme/The Madisonian  
West of Waterloo, the Perry Canyon Fire burned 52 acres of forest land.

Abigail Dennis  
THE MADISONIAN  
a.dennis@madisoniannews.com

From the Perry Canyon fire in the Tobacco Root Mountains to the Eustis fire near Toston and many other blazes in between, Beaverhead-Deerlodge National Forest land, Bureau of Land Management land and private land in Madison County and surrounding areas have been plagued with fires. The following is an update

on the fires burning on the BDNF and surrounding lands as of the morning of Tuesday, Aug. 18, which is causing the smoke in Madison County.

**Perry Canyon**

The Perry Canyon fire in the Tobacco Root Mountains started on Aug. 11. The fire is located in the northern part of the mountains, east of Waterloo and south of Whitehall. As of Tuesday, crews were patrolling the area for interior hot spots, but expected to complete

work by the end of the day.

Before being contained, the fire burned 52 acres, according to the BDNF.

**Eustis**

Around 8,721 acres have burned between Highway 287 and the Missouri River, four miles south of Toston. The Eustis fire started on Friday, Aug. 14 because of a lightning strike. As of Aug. 18, the fire was 90 percent contained. Firefighters from Gallatin and Broadwater counties

responded for initial attack. Erratic winds resulting from passing thunderstorms caused rapid fire growth, according to a BDNF press release.

"Little residual heat remains in the grass and wheat fields burned on Saturday night; flare ups are still occurring in brush and other heavy fuels on the interior of the fire but do not constitute a major threat for spotting," according to the release. "Crews continue to monitor these and mop up as

Turn to FIRES on pg. 2

## Ennis Town Council focuses on Chowning Alley Thursday's meeting saw multiple public comments about accessing alley in downtown Ennis for maintenance and emergencies

Caitlin Avey  
THE MADISONIAN  
news@madisoniannews.com

Last Thursday's town council meeting was a long one for Ennis commissioners. Mostly thanks to a discussion about Chowning Alley and obtaining agreements with property owners for accessibility.

"The town would like improve accessibility for emergency vehicles and routine maintenance," said Mayor Becky Vujovich. "We need to create agreements with landowners about how they're going to keep the alley clear."

The issues surrounding

Chowning Alley (behind Third Street) have been ongoing since 2013. In April of 2013, the town passed a motion to improve access to the alley in which they then followed up with a meeting with landowners asking to keep the alley clear.

The issue has since been brought back to the towns' attention as a liability concern after the Environmental Protection Agency conducted a contaminated soil clean up.

"If something were to happen, the town is liable," said Vujovich.

One of the main concerns is that a major sewer line runs through the alley prop-

erty and the town is worried about emergency vehicles being able to access the area should something happen.

Because the alley is town property and a public right-of-way, the town is forever granted public access based on a 1921 survey and as provided in the Montana Code Annotated, said city attorney James Greenbaum.

"Ennis has the power and authority to regulate, maintain control and clear obstructions because of what's in the Montana Code Annotated regulations," said Greenbaum.

Greenbaum has been with the city since June and formerly worked as the deputy

attorney for Gallatin County.

The town has seen continued problems with residents obstructing the alley, as well as trees and their root systems potentially causing issues for the town and the sewer line that runs through the alley.

Vujovich addressed the council about the potential problems the town could face if it were to abandon the alley. According to Vujovich, who met with a representative from Great West Engineering, she was advised not to abandon any alleys for future budget reasons.

"If the town needed to redo something, we'd have to buy back the property, which

would mean more money for the town," Vujovich said.

Norm Winkle, who owns property at the end of Chowning Alley and has been involved in the matter surrounding the alley since 2013, questioned the town's reasoning for addressing the issue.

"The town never cared till just recently," said Winkle. "I just want this thing settled."

The council members are working out an easement with Winkle to have access to the alley though his property because both the town and residents of the alley believe the trees on Winkle's property benefit the alley.

Andrew and Tashenna Meyer also have property in front of the alley and were present at the meeting. The Meyers gave public comment questioning the reasoning behind the town's purpose for accessing the alley.

"You can get in there from every side," said Tashenna during the meeting.

"Access is not the problem – what's really going on?"

Commissioner Brian Vincent addressed the issue, stating the town is just in a "sticky position" because of liability.

"The town hasn't maintained the alley for years and

Turn to ENNIS on pg. 2

**RUBY VALLEY** Member FDIC  
P.O. Box 417 • Twin Bridges, MT 59754 (406) 684-5678  
P.O. Box 587 • Sheridan, MT 59749 (406) 842-5411

With the Visa Prepaid Card, you'll have a safe and convenient payment method and enjoy the comfort of knowing you are taking a responsible approach to your spending.



The Visa Prepaid Card offers many benefits to support your everyday needs:  
• FREE Direct Deposit • Cash access at ATMs worldwide • Text Alerts • Bill Pay • Online cardholder website

**TABLE OF CONTENTS**

Local News.....A3	Columns.....B3
Obits.....A4	Comics/Games.....B4
More News.....A5	Classifieds/
Lifestyle.....B1	Public Notices.....B5-B6
Health & Wellness.....B2	Calendar.....B10

Visit us online at  
www.madisoniannews.com





**Conforming Mortgage Fixed Rates**

30 Years - .000% Points  
**3.875% Rate 3.976% APR**

15 Years - .000% Points  
**3.000% Rate 3.177% APR**

Rates subject to change without notice, APR calculation is based on a \$200,000.00 loan amount with a 1% loan origination fee, \$125.00 processing fee, \$295.00 document processing fee, Mers fee \$11.95, \$15.00 flood determination fee, \$4.00 transcript fee, 15 days of prepaid interest and \*discount point fee as stated above.

**Celebrating 50 Years Of Service!**  
**1965 - 2015**

**AUTO LOANS**  
 AS LOW AS  
**4.5% rate**  
**4.879% APR**

Rates subject to change without notice, APR calculation based on \$20,000.00 loan amount with a \$149.90 loan fee, 48 monthly payments of \$493.67 on approved credit.

**FIRST MADISON VALLEY BANK**  
 Member FDIC

Office: 406.682.4215 • Toll Free: 888.622.4215  
 213 E. Main St • Ennis, MT 59729

**WWW.BANKINGONTHEFUTURE.COM**

**HARDY DRYWALL**  
**FULL SERVICE DRYWALL, PLASTER & STUCCO**  
**406-596-3137**

**McAllister Inn**  
**Steakhouse and Bar**

Montana Fine Dining, Steaks, Seafood and Nightly Specials.

5566 Hwy 287 N • Lunch and Dinner  
 For reservations - 406-682-5000

**Madison Valley Roofing**  
 Formerly Savage Roofing  
**Roofing Year Round!**

Fully insured  
**FREE Estimates**  
 Call 641-0059 or 682-7523

CONVENTIONAL FRAME HOMES  
 COMMERCIAL  
 REMODELS & ADDITIONS  
 HAND-CRAFTED LOG HOMES

**B&E**  
*All phases of construction, design and consulting*  
**CUSTOM BUILDING & DESIGN**

e-mail: bande@3rivers.net | www.bandeconstruction.com  
 brad bullock 581-4117 | ken evans 490-2758 | office 682-7942  
 p.o. box 1444 Ennis, MT 59729

**FIRES from pg. 1**

needed. Down power lines have been cleared from the Eustis Road and power has been temporarily rerouted and restored to the irrigation district pump station. Transmission lines are still down within the fire perimeter but all are de-energized. The petroleum pipeline is being monitored to prevent damage by fire operations.”

**Cabin Creek**

Around 12 miles southeast of Dillon, the Cabin Creek fire has burned around 1,400 acres in the Blacktail Mountain Range. The fire was detected on Aug. 14 after a cold front with dry lightning and strong, gusty wind moved through the region.

“Firefighters were successful at getting dozer lines established on the west side of the fire on Saturday and are conducting mop up operations on that flank which is looking (secure),” according to a BDNF press release. “With this line in place, no structures are currently threatened.”

As of Aug. 18, the fire was at 895 acres, and 95 percent contained.

**Scotchman’s Gulch**

On Aug. 13, a fire started approximately 14 miles north/northwest of Philipsburg in the Scotchman’s Gulch area. As of Aug. 17, the fire was at approximately 186 acres, and threatening private structures around Upper Willow Creek and Rock Creek drainages. Access to the fire is limited, because the area is steep and rocky with heavy dead and downed trees. On Sunday, fire personnel cleared zones for landing helicopters and walked the perimeter of the fire to secure it. As of Aug. 18, the fire was only 5 percent contained.

**Smaller wildland fires**

A series of thunderstorms passed through Southwest Montana and started multiple wildland fires because of lightning strikes and high winds, according to a BDNF press release. The following is a BDNF update on a number of small fires.

•Mount Jumbo Fire – The fire is located near the top of Mount Jumbo on the Wisdom District of the forest. The forest is only monitoring this fire because it is difficult to access

and they lack resources.

•Lincoln Park Fire – The Lincoln Park Fire is located east of Montana Highway 569 on the Wise River District. The fire only burned around one-tenth of an acre – it was contained by 6 p.m. on Aug. 15.

•Emerine Ridge Fire – The fire is located between Mount Emerine and the Skalkaho Highway on the Pintler Ranger District. A single engine air tanker was diverted from the Scotchman’s Gulch Fire to drop retardant, which slowed the progress of the fire until firefighters were able to get on site. The fire only burned around one-tenth of an acre.

•Mountain Spring One, Mountain Spring Two, Beaver Creek, Shylo Creek – Four lightning-caused fires started on Aug. 12, around eight miles north of the larger Scotchman’s Gulch Fire. All four burned less than one-fourth of an acre and are currently controlled.

For up-to-date information about all these fires (and more) go online to <http://inciweb.nwccg.gov/>.



**SHERIDAN from pg. 1**

they could not feed at the center. They have a single old stove, a kitchen from the 1950s and a very dedicated staff.”

In a single meeting between the library board and the senior center board, Gilmore said the groups came to the decision to join forces to cooperate for a single grant, instead of compete against one another.

“I was very impressed ... the two boards agreed to play together and to support a single initiative,” he said.

The first step is already in motion, Shaffer said. The council voted unanimously in favor of applying for a CDBG planning grant.

“Then if they receive that,

they can hire (an engineer) and get a plan together,” Shaffer said. “(That grant) is just for planning. Then they can proceed to the next step.”

**Pool days are over**

More than a week ago, the Ruby Valley Pool closed for the season.

“We ended up closing the pool because our boiler broke down,” said Nondi Harrington, who is a member of Sheridan and Alder Parks and Recreation. “It’s been breaking all summer, but it finally said sayonara. We’re going to have to replace some major components in the boiler.”

Shaffer said many community members showed up to the meeting because of

frustration and confusion about the pool closing early.

“After the conversation, people then understood the why a little better,” Shaffer said. “I think it’s great that people were there and they were fired up. That’s what has to happen. People were pretty mad, but once they heard the logistics behind it, they understood a little better. The pool is older and the infrastructure is just failing.”

Harrington said the boiler is most likely more than 20 years old.

“(After it broke) we kept the pool open as long as we could, but the water was dangerously cold so we had to close it,” she said. “We wanted to stay open until our lifeguards

had to go back to college and high school, but couldn’t.”

The parks board hired a pool expert out of Billings to come to Sheridan to inspect the entire pool system, Shaffer said.

“Then when they know what’s wrong, they can prioritize what to do for next year,” Shaffer said.

**The Sheridan and Alder Parks and Rec pool board meets the last Friday of every month. This month’s meeting will be at the Alder Fire Hall at 8:30 a.m. on Friday, Aug. 28.**

**Have an opinion?**

Think the bus would be a good idea? Not in favor of it? Let the chambers know your thoughts by sending an email to one of these addresses: Virginia City Chamber of Commerce: [info@virginiacity.com](mailto:info@virginiacity.com) Ennis Chamber of Commerce: [info@ennischamber.com](mailto:info@ennischamber.com)

**BUS from pg. 1**

Rossov said she thinks business owners in Virginia City would be in favor of the bus.

“I can’t see anyone in town who would not be outstandingly excited this would be going on,” Rossov said. “We’ve been trying for years to get people over

here who may not come otherwise. For special events in Ennis and Virginia City, it’s fabulous.”

Hart pointed out that between the Fourth of July and Labor Day, there is an event happening in both towns nearly every weekend.

“Perhaps the best option is to wait until next sum-

mer to try it,” Hart said. “It’s already mid-August.”

Clark agreed with the idea of doing it next summer.

“That way we can start finding ways to raise money and look into grants and stuff,” Clark said. “Maybe different event holders can sponsor a bus for a weekend.”

**ENNIS from pg. 1**

residents have done what they wanted, and having that changed can be abrupt,” Vujovich said, explaining why she believes residents are upset.

Members of the council, along with the mayor and city attorney, surveyed the alley during Thursday’s meeting, hoping to have a clearer understanding of landowners concerns.

Vujovich asked for clear direction from the council of a time frame to have the issue solved.

“We’ve asked, had meetings – it’s time to put the issue to rest,” said Vujovich. “We need to have agreements in place and have legal action to back us up.”

The resolution Vujovich suggested if the issue continues to drag on would be to take it to the court.

“The chances of something happening is so minute, but it is a liability and it is something we need to think about,” Vujovich said.

After the walkthrough, the town came to an agreement to hopefully finalize issues with the alley. The council agreed

to a one-month timeline to have individual agreements finalized with each landowner.

“We want to be reason-

able about it,” said Vincent. “It’s not a one size fits all.”

Caitlin Avey/The Madisonian  
 City attorney James Greenbaum answers questions during the council’s trip to Chowning alley.



**How well do YOU know Madison County?**

THIS WEEK’S CONTEST IS SPONSORED BY

*Shovel & Spoon*  
**Sheridan, MT**  
 and  
*Maple’s Coffee*  
**Ennis, MT**



Who knows where we pulled over to take this photo? Call 682-7755 with your guess!



Our lucky winner this week was Rhea Tucker from Ennis who knew this was Three Dollar Bridge!



# MORE NEWS:



Caitlin Avey/The Madisonian  
Tie down roping was one of the many events at Friday night's rodeo. Other events included team roping, ladies breakaway roping, saddle bronc and bull riding, and the famous wild cow milking.

## 2015 MADISON COUNTY FAIR AND RODEO



Caitlin Avey/The Madisonian  
Tyler Pancost, 11, of Twin Bridges washes her lamb Baymax before showing.

BLUE JEANS AND RODEO SCENES WAS THE THEME OF THIS YEAR'S COUNTY FAIR, WHICH CONCLUDED SUNDAY WITH THE ANNUAL FAIR PARADE IN TWIN BRIDGES. THE MADISON COUNTY FAIR IS A NEARLY WEEK-LONG EVENT HELD AT THE TWIN BRIDGES FAIRGROUNDS, HOSTING DIFFERENT EVENTS AND SHOWS FOR ALL OF MADISON COUNTY'S YOUTH AND UP-AND-COMING RODEO-ERS. FROM THE SWINE AND STEER SHOWS, TO OPEN-CLASS, TO A TWO-NIGHT RODEO, THE FAIR OFFERED SOMETHING FOR EVERYONE. DIFFERENT VENDORS LINED THE FAIRGROUNDS FOR THOSE ATTENDING, AND A SMALL CHILDREN'S CARNIVAL AND PETTING ZOO WERE MADE AVAILABLE FOR THE YOUNGER ATTENDEES. WITH SO MUCH TO DO, IT IS A HARD TO CHOOSE A FAVORITE FAIR FESTIVITY, BUT HERE ARE SOME FAVORITES FROM THE MOUTHS OF YOUNG FAIRGOERS:  
"I LIKE TO SEEING MY FRIENDS AND GETTING MONEY." - CADI RODRIGUEZ  
"I LIKE HELPING MY FRIENDS TAKE CARE OF THEIR ANIMALS." - ISAAC SKOGEN  
"I LIKE THE FOOD." - ZACH FREY  
"I GOTTA SAY THE ZOO. I LIKE SEEING THE ANIMALS." - ZOE GREEN



Caitlin Avey/The Madisonian  
Open class events included everything from baked and canned goods, to sewing and photography projects.



Caitlin Avey/The Madisonian  
The fence surrounding the sale arena provided good seating for those waiting their turn at the auction on Saturday.



Caitlin Avey/The Madisonian  
A member of Jaycee Rodeos out of Dillon tries to corral a bronc during Friday's rodeo.



Caitlin Avey/The Madisonian  
Chas Buus' pig got a little excited when he entered the sale arena. Buus' pig weighed in at a whopping 255 pounds.



Caitlin Avey/The Madisonian  
Dorothy Bradley watches over the open-class exhibits. "I enjoy the art," Bradley said.



# OBITUARIES

## The Madisonian.

Established in 1873

(USPS 325-340)

Montana's Oldest Operating Weekly Newspaper

### Owners/Publishers:

Susanne Hill & Erin Leonard

Editor: Abigail Dennis

Director of Sales & Marketing:

Susanne Hill

Art Director: Erin Leonard

Circulation Manager: Kayla Way

Staff Writer/Projects Assistant: Caitlin Avey

### Contributors:

Gail Banks, Keith Axberg, Gen Pierce, Steve DiGiovanna, Art Kehler, Stacy Gatewood, Kelley Knack, Nancy Nesbit, Tammy Wham, Christopher Mummie, Matt Hill, Gerry Mooney

### ENNIS, MONTANA

#### - Madisonian Editorial Policy -

Editorials are intended to acquaint our readers with the Editor's viewpoints on matters of public importance. Guest editorials and letters from readers (Letters to the Editor) reflect the opinion of the writers and do not necessarily reflect the opinion of the Editor or the staff of *The Madisonian*.

#### - Press Release Policy -

•*The Madisonian* staff will give all press releases full consideration, but ultimately retains the authority to determine whether or not to publish releases.

•Content must be factual and objective.

•Content must not contain advertising language (such as "call now," "to buy tickets for," "now showing,") or include pricing.

•Items of a general business interest are appropriate for advertising—see advertising policy and current rates.

•Content must not be derogatory to competing companies or organizations.

•Content may only be submitted and published once.

•There are no guarantees that press releases will be published.

•*The Madisonian* may edit submissions for grammar and content.

•*The Madisonian* reserves the right to make all determinations relative to the above policy.

#### - Letters to the Editor/Readers Speak Policy -

*The Madisonian* encourages the opinions of readers on public issues and matters of local concern. Letters must be close to 350 words. Please include the writer's name, address and phone number. *The Madisonian* reserves the right to edit content for grammar, good taste and libel. We also reserve the right to reject or delay publications.

Announcements and letters of a commercial nature will not appear in this column.

#### - Display & Classified Advertising Policy -

*The Madisonian* accepts most advertising, but may turn away any advertisement for any reason. It is up to us to decide on placement and content acceptability.

The advertisements in this publication are not necessarily the opinion of or supported by *The Madisonian*.

Please note: Our client information is confidential.

#### - Subscription Rates -

In-State - \$35.00/1 year or \$60.00/2 years • Out-of-State - \$45.00/1 year or \$75.00/2 years (e-Edition complimentary with print subscription) • \$30 - e-Edition only • \$40 - 6 mos. print/1 year e-Edition

Postmaster: Please, Send Address Changes to:  
The Madisonian, P.O. Box 365, Ennis, MT 59729

Phone 406-682-7755

Toll Free 1-888-238-7849

email: editor@madisoniannews.com

Hours of Operation:

Monday - Friday ~ 8:30-Noon & 1-5 - Unless Notified Otherwise

**NEWS & ADVERTISING  
DEADLINE**  
5 p.m. - Friday

## WE OFFER COMPLIMENTARY OBITUARIES

*Guidelines: Must be 450 words or less and one photo. (Otherwise, it will be 25 cents per word thereafter)*

Please call or email:  
682-7755 or  
editor@madisoniannews.com

### Edwin Elmer Drake

February 23, 1918 - August 15, 2015



Edwin Elmer Drake passed away Aug. 15, 2015, at the age of 97.

He was born in Pony on Feb. 23, 1918, to Elmer and Ora Drake. Ed was a third generation Montanan. He attended school in and around Pony. In his teens, jobs were scarce and times were tough so Ed did whatever to find work. He worked sometimes in the mines above Pony and Mammoth. A way to make a living was always found from putting up hay

with a beaver slide to shocking for a thrashing machine. Some winters he would trap, traveling many miles on snowshoes. And other times, he would go to the coast with his Uncle Cecil to cut the big timber with cross cut saws. Ed would talk about spring boards and the use of falling, limbing and bucking saws and how the teeth should be set on each saw. He would explain how the donkey (steam powered engine) would hoist the big logs to the flume. One summer he packed for sheep camps into the Crazy Mountains.

In March 1941 Edwin entered the Army and served in Alaska, France and Germany during World War II. After the service, he moved to Baker, Ore., where he had a mechanic shop. In Oregon, he met Edna Donley and they

married in 1946. They relocated back to Pony in 1952, where they raised their family of five children.

Edwin worked construction Montana, Idaho and Wyoming as a welder. He was a member of the Local 400 Operating Engineers for 65 years.

Edwin was an avid hunter and fisherman, and taught his sons, son-in-law and grandchildren how to hunt elk and fish.

He retired in the Bitterroot country in 1983.

He was preceded in death by his parents, spouse and sister.

He is survived by his three daughters and two sons: Cynthia (Brian) Rumsey of Pony, Donna Jennings of Harrison, Donald (Patti) Drake of Whitehall, Patricia (Don Silver) Drake of Columbus, Ohio, and Randy

(Marcia) Drake of Sitka, Ak. He was also proud to have nine grandchildren, five great grandchildren and two nieces.

At Edwin's request there will be no funeral services and his ashes will be spread at a favorite elk hunting camp in the Tobacco Root Mountains above Pony. There will be a celebration of his life held at the Pony Senior Center at a fall date to be determined.

The family would like to give a special thanks to the staff at Meadowlark Manor in Whitehall for making the past six years of Edwin's life so enjoyable.

In lieu of flowers, please make memorials to the Pony Homecoming Club, P.O. Box 654, Pony, MT 59747.

K&L Mortuaries of Harrison is assisting with arrangements.

### Stella Gibson Flansburg

October 6, 1921 - August 13, 2015



Stella Gibson Flansburg passed away on Aug. 13 after a short battle with cancer.

The following was written by Stella:

I was born Oct. 6, 1921, to Chris and Gudrun Hansen 1 1/2 miles outside of Lima, in a log cabin with a sod roof and mudded insides. The cabin was 16 x 18 feet. It was always my most cherished childhood home.

I married Harold Von Olnhausen and a son Dick was born. We were later divorced. I married Clyde Gibson in 1946

in Belgrade. Together, we had a daughter Edyth. Shortly after our marriage we moved to Spokane, Wash., and then soon after to Almira, Wash. We took up barbering and I was a beautician. In 1960, we bought the Almira Hotel and started up a bowling alley. In the hotel there were rooms to rent, a café and bar. We were kept busy, but I loved that hotel.

We sold it in 1978, due to Clyde's health and then moved to Harrison, until Clyde's death in 1980.

I then moved back to Washington and worked in Creston at Deb Copenhaver's restaurant. During that time I met up with an old friend, Murray Gill, and we became companions. We moved to Hot Springs for the mineral waters. Four years later, Murray passed on. I married Gary Flansburg on Sept. 21, 1986. He passed away in October of 2013.

I still worked in later years

at the Senior Center in Hot Springs until 80 years of age. My most enjoyment was crocheting Indian dolls and afghans.

Stella is survived by daughter Edyth (Gary) Nelson of Harrison; four nephews and their wives; Chris Ray (Debbie) Hansen, GeeGee and Janet Hansen, Galen and Kathy Hansen, all of Elk, Wash., and Marty and Linda Hansen, Vacaville, Calif.; three granddaughters, Bobbi and Tom Peters, Jody and Mark Qualley all of Spokane, Wash., and Tanya Furger, Petaluma, Calif.; five great-grandchildren; three stepsons and three stepdaughters, Kimberly Archambeau of Kalispell, Tina Flansburg of Spokane, Wash., Gary and Helen Knutson of Highlands Ranch, Colo., Gary Flansburg Jr. of Richland, Wash., Freddie and Peggy Flansburg of Kalispell, and Kelly Larson of Billings; and 12 step grand-

children; five great-step grandchildren; and two great-great step grandchildren, along with numerous nieces and nephews.

She was preceded in death by her parents Chris and Gudrun Hansen, sister Edith Hansen, brother Chris Hansen, son Dick Von Olnhausen, husband of 34 years, Clyde Gibson, companion of four years Murray Gill, and husband of 27 years, Gary Flansburg.

A very special thanks to

Bonnie, Norman and Danielle at Pleasant View Assisted Living in Missoula.

Services will be at 2 p.m.

on Saturday, Aug. 22, at K

& L Mortuaries in Harrison.

Interment will follow at Valley

View Cemetery in Pony with a

reception at the Hollowtop

Senior Center in the Masonic

Building in Pony. Visitation

will begin Friday at the

K&L Mortuary in Harrison.

### Isabelle Jeffers Harstad

May 26, 1918 - August 13, 2015



Isabelle Jeffers Harstad, 97, passed away on August 13, 2015, in Great Falls. She was born on May 26, 1918, to Mary Isabelle (Gilmour) Jeffers and Austin P. Jeffers of Jeffers. She was married for 65 years to Adolph L. Harstad. Isabelle approached the world with curiosity and loved

traveling and reading and, above all, beauty. She had a wonderful sense of humor and wanted everyone around her to have a good time. She was a life-long Episcopalian.

She is survived by her daughters Ginger Harstad Glawe (Dean) and Ann Harstad Pasha (Bob); grand-

children David Livesay, Erin Weisgerber (Sam), Jeffers Pasha (Andrea); and Tyler Ryan; and great-grandchildren Maddison, Cambrie, Ashton, Ellie and Easton. Memorials may be sent to Wheelchair Angels, P.O. Box 79, Highwood, MT 59450.

### Sandra Sue (Harper) Hunt

June 24, 1942 - August 4, 2015



"Sandy" Hunt was born June 24, 1942, in Fruita, Colo. as the only child of James and Helen (Nichols) Harper. She died tragically without suffering on Aug. 4, 2015, during a one-car rollover near Three Forks.

An enthusiastic cook, crafty homemaker and intuitive caregiver, Sandra lovingly attended to others without being asked, but she also possessed the tough sensibilities of a farmwife.

During childhood, Sandra moved often with family, first in Colorado, then Utah and finally

Montana, settling in the vibrant farming community of Waterloo. Sandra attended Whitehall schools, there encountering her future husband, Ronny, as he spun cartwheels down the Main Street. Ronny and Sandra spent time together in 4-H, and then in 1957, they married. They purchased a farm in Waterloo, and later agreed "we felt like we had it made," starting with just a couple livestock. They cut the back out of an old car to fashion it into a truck. They borrowed tractors to work their fields. Eventually they developed a ranch with hundreds of cows, sheep, pigs and chickens. They harvested alfalfa and barley.

Sandra lived that all-encompassing lifestyle for 40 years, giving birth to the first of three sons, Dean, on her sixteenth birthday in 1958. Sons Paul (1961) and Ray (1965)

followed. Sandra had been an excellent student, but her lifestyle precluded schooling past ninth grade and later attained her G.E.D. Sandra nurtured fertile gardens - her produce was eaten fresh or canned for winter, leaving much to share.

In 1998, Sandra and Ronny retired and built a new home in Whitehall. After Sandra survived breast cancer, they took yearly vacations, something only dreamed of as farmers. In Whitehall, Sandra volunteered for a wide variety of church and community services. Sandra assisted Ronny to build houses for their three sons. She was quick to offer tea and coffee with a welcoming smile and friendly conversation. An eager sitter of grandchildren Sandra is perhaps best remembered by them as an artist at making animal-shaped pancakes.

Sandra is survived by Ronny and her sons' families; Dean and Lorie Hunt of Waterloo with children Kayla and Ryan; Paul and Jamie (Ballard) Hunt of Waterloo; and Ray & Nicole Hunt of Warm Springs with boys Eon, Ember, and Roam; brother-in-law and sister-in-law Bill and Judy Anderson and daughter Jill of Dillon; sister-in-law Jerri Hunt of Idaho and children Dustin, Jody, and David.

Sandra's memorial services will be delayed until Ronny is well enough to attend. He was with Sandra during the wreck, and is currently under intensive medical care as a result of injuries. Share thoughts for Ronny at [www.caringbridge.org/visit/ronnyhunt](http://www.caringbridge.org/visit/ronnyhunt). In lieu of flowers, please donate to Whitehall's United Methodist Church.

### Ellyn Rosemina (Christensen) Staley

April 1, 1927 - August 7, 2015



Born at home in Laurin into a pioneer family of 11 children, Ellyn Christensen Staley grew up with a zeal for hard work and an active outdoor lifestyle. Her parents were Chris and Mary Christensen, who raised sheep and farmed a variety of crops in the Ruby Valley. Ellyn often reminisced about her rural upbringing herding sheep and farming with her siblings. Ellyn attended the Laurin grade school and graduated valedictorian from Three

Forks High School. She married George Staley after World War II when he was discharged from the Navy. George and Ellyn moved to Twin Bridges. A common occurrence in rural communities, two brothers, George and Frank Staley, married sisters, Ellyn and Dorothy Christensen, creating a tight family bond among their descendants. Ellyn and George had two children, Craig Staley and Tammy (Staley) Balkenbush.

In 1955, George and Ellyn moved to Butte where George worked as a carpenter. Ellyn was employed at several banks and ultimately spent the majority of her career as the superintendent of schools' secretary in the Butte School District. Ellyn also worked alongside her husband, pounding nails with the best, to build two homes, including her dream home in Blacktail Canyon, and

a cherished, small second home on Flathead Lake. Many weekends were spent on the Flathead boating, water skiing, hiking and skiing with her children, extended family and friends.

In 2012, Ellyn sustained a serious head injury from a fall at home. She moved to the Marquis Assisted Living. During her years at the Marquis, she enjoyed the company of friends, old and new, and never missed the wine social on Wednesday nights. Surrounded by the love and support of her children, their spouses, extended family and close friends, Ellyn peacefully died at her Marquis apartment on Aug. 7, 2015, at the age of 88 years old.

Ellyn was preceded in death by her parents; brothers Lawrence, Robert, Marion, Chris Jr. and Sofus Christensen; sisters Anna Kinney, Margaret Mac-

Donald and Dorothy Staley.

She is survived by her children Craig (Betty) Staley, of Sheridan and Tammy (Bob) Balkenbush, of Kalispell; grandsons Jason Balkenbush (fiancée Lena Roberts) of Brisbane, Australia and Steven (Therese) Balkenbush, of Moses Lake, Wash. She is also survived by her sister Mabel Lynn (Jack) Sullivan, of Clinton; brother Jens Christensen, of Twin Bridges, and sister-in-law Michiri "Penny" Christensen of Laurin; along with numerous nieces, nephews and their descendants.

Her memorial service was Tuesday, Aug. 18, 10 a.m. at the Marquis Community Building. Her ashes were spread with her husband's ashes at a later date. Memorial donations to the Flathead Lake preservation association can be sent to Flathead Lakers, P.O. Box 70, Polson, MT 59860.



# ... AND MORE FROM THE FAIR THE 2015 RANCH RODEO



Susanne Hill/The Madisonian

From L: Jumping Horse Ranch team members, Casey Currey, Collin Rice, Cameron Carroll and Kyle Nelson battle their cow.



Susanne Hill/The Madisonian

Bill Wood holds the head and Bo Decker holds the tail while Ryan Keltz collects enough milk to qualify the Bradley Livestock Team for a time in the wild cow milking event. (Not pictured: Sam Wood.)

The Madison County Fair's annual Ranch Hand Rodeo was held last Thursday evening. The event kicked off with a calcutta, where various members of the audience purchased the team they thought was most likely to win. The

competition followed immediately and included four events: team branding, team doctoring, wild cow milking and trailer loading. Ladder Canyon Ranch sponsors the ranch hand rodeo at the county fair each year. It

is a free event and, according to Nancy Matheson, it will likely stay that way (of LCR). "We love offering the (ranch hand rodeo) at no charge – it's great entertainment and we hope to see more and more folks attend

each year," Matheson said.

**Team results:** First place went to the Swandal Ranch team, which consisted of Cleve Swandal, Travis Remly, Kurt Muraz and Tyler Sarrazan. Second was taken by the Hamilton

Ranch team, composed of Jamie Wood, John Ward, Jason Ward and Rett Rigby. The Ladder Canyon Ranch team snagged third. Riders included Jake Pancost, LJ Pancost, Hank Bevan and Luke Wiggins.

**Calcutta winners:** C&G Rodeo won first with the Swandal Ranch team; Bob Helming purchased the Hamilton Ranch for second and Mark Adams took home the third place with the Ladder Canyon Ranch team.

## DISTRICT COURT ROUND UP

Abigail Dennis

THE MADISONIAN

a.dennis@madisoniannews.com

### Rice must pay restitution

On Aug. 17, William Jeffrey Rice was ordered to appear in the Madison County Courthouse before Judge Loren Tucker, but did not show up.

Rice's attorney, Walter M. Hennessey, was present. Rice was supposed to appear because of a petition to revoke a

suspended sentence, according to court documents.

Rice was initially charged with vehicular homicide while under the influence and driving under the influence of alcohol in 2009 – the second charge was eventually dropped and the first charge was amended to criminal endangerment, which Rice pleaded guilty to.

Rice was sentenced in 2011, and received a 10-year

sentence, all but three years suspended. However, the state, represented by Madison County Attorney Chris Christensen is now alleging that Rice did not make payments to his restitution requirements and filed the petition to revoke his sentence.

Hennessey requested the court allow Rice until Sept. 14 to pay the restitution.

"We will give him the benefit of the doubt, but this is the

last time," said Christensen.

Judge Tucker ordered Rice pay the restitution by Sept. 14 or the court will issue a bench warrant for his arrest.

### Petition to revoke sentence

Sarah Noelene Schwab appeared at the Madison County Courthouse before Judge Loren Tucker on Aug. 17 on a petition to revoke her suspended sentence.

Schwab was sentenced for

issuing a bad check on May 4, 2015, and received a five year sentence, all suspended but 82 days previously served. She was placed under the supervision of the Department of Corrections with conditions.

The state, represented by Madison County Attorney Chris Christensen alleged Schwab violated those conditions of her suspended sentence by failing to report contact

with law enforcement to her probation officer, consuming alcohol and having methamphetamine in her system.

Schwab pleaded true to consuming alcohol, but entered not true pleas to the other charges.

Christensen requested the court schedule a later sentencing date so a probation officer can be present, and Judge Tucker agreed, releasing Schwab back into custody.

## CARCASS COMPOSTING

Interested parties still searching for a location

Abigail Dennis

THE MADISONIAN

a.dennis@madisoniannews.com

Kris Inman with the Wildlife Conservation Society approached the Madison County commissioners on Aug. 10 with an update about the future of carcass composting in Madison County.

"I wanted to visit with you on where to go next on the compost site selection," Inman said.

A location for the facility is still up in the air because the preferred site at the Twin Bridges dumpsite was contested by the Madison County Airport Board because of its proximity to the Twin Bridges Airport.

"What we heard from the airport board when we met with them in June – and more specifically from (Lance Bowser, engineer with Robert Peccia and Associates) – that they did not want (the site) to be at the county waste transfer station, but that they were not opposed to it being closer than six miles from the airport."

Federal Aviation Association guidelines recommend

composting and waste sites be six miles from airports.

"I still think it's a great idea and it needs to be pursued some place," commissioner Dave Schulz said about the project.

### Alternate sites

Inman said there is a potential site around two miles south of the airport.

"It's a gravel pit south of there," she said.

Schulz said the land in question belongs to the Montana Department of Transportation, which is a perk because the MDT needs a site for the purpose of getting rid of road kill. However, there are a few complications with the site.

"The bad thing is, the part the highway owns only goes back 80 to 100 yards from the road," Schulz said. "I'm not sure a site can be located there in a way that it would be somewhat shielded from general traffic running back and forth. I worry about that aspect of it."

Inman said the majority of the interest in having a carcass composting site in the county is coming from livestock produc-

ers around Twin Bridges, so it might make sense to pursue a site on private land somewhere north of the town.

"There are still one or two places we haven't looked," Schulz said. "I think the MDT site is the logical one, but what about looking at (private land) around Sheridan?"

Schulz suggested Inman reach out to some landowners around Sheridan – a site in Sheridan would be centrally located for the entire Ruby Valley to use, from the Upper Ruby to Twin Bridges.

"So the real question is, where might be a good site?" Commissioner Jim Hart concluded. "We have to keep looking at places and crossing them off the list."

### Project funding

Finding a location for the site needs to happen sooner rather than later, because the project funds are through Livestock Loss Board grants, and Inman said she believes the money needs to be used before the end of the year.

## JUST KEEP SWIMMING



Photo courtesy Pat Clancey  
The fish ladder at Smith Lake will allow spawning trout to navigate the dam.

Abigail Dennis

THE MADISONIAN

a.dennis@madisoniannews.com

At the end of July, Montana Fish, Wildlife and Parks installed a fish ladder at the Smith Lake Dam near the West Fork of the Madison River.

"The fish ladder was

installed as part of a project to improve spawning trout passage around the Smith Lake Dam," Clancey said.

The ladder allows spawning fish to navigate through the bypass channel out of Smith Lake, which gets blocked every year, Clancey said.

"Maybe it's people

picnicking," Clancey said. "Maybe they just toss rocks in not knowing it's a spawning channel, but every year we have to go out there are clear the rocks."

Clancey said the fish ladder will make it obvious that the channel is used by spawning fish.

## SMOKE IN THE AIR

*Hi readers,*

Last week, I traveled to my home state of Kansas for a wedding. I left on Wednesday and drove straight – 19 long hours in the car. Still, I made it back to see my family and celebrate with two of my good friends on their special day. I flew back after the wedding, and when my feet hit the tarmac at the Bozeman airport, I was shocked by the amount of smoke.

When I crested Norris Hill on my way back to Ennis, I was even more taken aback. Not only was town hidden by a smoky haze, but I couldn't even see the mountains!

Thanks to email updates from the Beaverhead-Deerlodge National Forest, I was able to keep up-to-date on the fire starts in and around Madison County while I was away. From the blaze in the northern Tobacco Roots to the fire still burning north

of Three Forks, it's no wonder Madison County is in a cloud.

I guess we all knew this was coming. Fire season in Southwest Montana isn't something to take lightly. Still, I was holding out hope that all the rain we've received in the past few weeks would keep the fire starts at bay. Speaking of the rain, check next week's issue of *The Madisonian* – I'll be interviewing Lucas Zukiewicz, water supply specialist with the Natural Resources and Conservation Service, to learn exactly what summer storms have meant for the region.

I know wildland fire is a natural process, one that is important for range health, but I hope the flames stay away from homes and other structures this season. We've written about this before, but if you're a homeowner, it is your responsibility to create defensible space around your home.

Here are a few tips compiled from our local fire chiefs:

- Remove pine needles, dead limbs, twigs, dry leaves and flammable vegetation from within five feet of your home.
- Sweep porches and decks to clear pine needles and leaves.
- Remove leaves and rubbish from under structures.
- Thin a 15-foot space between tree crowns and remove limbs within 15 feet of the ground.
- Prune tree branches and shrubs within 15 feet of a stovepipe or chimney outlet.
- Remove all branches that extend over the roof.
- Keep woodpiles 30 feet from your home.

Get smart and stay safe!

*Abigail*

Photo courtesy Chris Mumme





# NOW OPEN!

**E**YES  
ON MAIN  
*VISION SOURCE™*

Dr. Jeff Squire  
406-577-2380

222 E. Main St #1C  
Ennis, MT

Thursdays  
9am to 5pm



Call today to  
schedule your  
annual eye exam!

We appreciate your  
patronage and will work hard  
to maintain your trust.

## AROUND THE COUNTY

### Hunter education in Twin Bridges

Submitted by Gail Banks

The hunter education class at Twin Bridges will begin Monday, Aug. 24, 2015, at the Twin Bridges School. The class will be held in the high school math room. Students must be 11 years old by the beginning of the first class session.

Students must register online using the Montana Department of Fish, Wildlife and Parks website. The students register for the class and print off two forms that they must sign and bring to the first class.

The first night, a parent or guardian should attend with their children.

The class will run Aug. 24 - 28 from 6 - 9 p.m. On Saturday, Aug. 29, the class will be held at the Ruby Valley Gun Club. Please contact Clay Garrison (596-2550), Sam Stockett (925-9668), Jeff Stephens (596-2243) or Doug Denson

(684-5596 or 596-1947) with any questions or for more information. Students need to pick up a student book to study and prepare for class; they may be picked at the Twin Bridges High School.

### Music at the caverns

Submitted by Tom Forwood

Montana State Parks will host music by the caverns at Lewis & Clark Caverns State Park on Sunday, Aug. 30, 2015, from 10 a.m. to 5:30 p.m.

Music in the caverns is completing its last set for this year. Join us again for the local musician festival in the beautiful scenery of Lewis & Clark Caverns State Park. Take in the sounds of Montana musicians performing gospel, country-western, folk and everything in between. This event is family friendly. Come for an hour or bring a picnic and stay all day. Performances will be at the Cave Visitor Center throughout the day.

For more information, call 287-3451.

### A wet Wildlife Speaker Series

Submitted by Rebecca Ramsey  
RUBY WATERSHED COORDINATOR

On Wednesday, Aug. 12, the Ruby Habitat Foundation hosted the Wildlife Speaker Series on Golden Eagles. More than 110 people were in attendance to learn about these majestic birds. The evening started off with an abundant potluck provided by the attendees, which included bison chili, bison compliments of the Snowcrest Ranch, and local Ruby Valley raised barbecued beef, compliments of the Ruby Valley Conservation District.

Eric Johnston, research technician with Montana State University, started his presentation by introducing Aquila, a 23 year old female golden eagle. She was hit by a propane truck as a juvenile bird and sustained injuries that prevent her from flying. She has since spent her winters aiding in captures and science, and summers at the Grizzly and Wolf Discovery Center in West Yellowstone, raising awareness and appreciation for her species. We were certainly fortunate to spend time with her at the Woodson Ranch.

However, just as Johnston began his presentation, the sky opened up with an electric lightshow, loud thunder and a deluge of rain. After a long rain delay, lightning evacuation and another attempt at listening to Johnston before

a second storm cell moved in, most of the crowd headed for home. About 20 hearty souls weathered the storm and waited it out and heard more from Johnston under cover of the visitors center. For those of you who could not make

it, or stay late, please see this week's Natural Resource News column on page B3 for an overview on golden eagles. We will have Johnston back for the 2016 Wildlife Speaker Series for a do-over (and hope for clear skies).



### Where's Melinda?

These bargains are just "TU-TU" good to pass up!!!



Melinda Merrill, Broker

An independently owned and operated franchisee of BHH Affiliates, LLC. Berkshire Hathaway HomeServices and the Berkshire Hathaway HomeServices symbol are registered service marks of HomeServices of America, Inc. ® Equal Housing Opportunity.

- 5.42 acres with access to Forest Service - \$38,000
- Valley Garden Golf Course parcel - \$49,900
- 1/2 acre with creek close to town - \$49,900
- 5+ acres fenced for horses + power - \$58,500
- 1 acre bordering pond for fishing - \$69,900
- Getaway cabin on creek in Pony - \$89,000
- 20 acres with TREES + power - \$145,000
- Rental Income from Duplex - \$169,500
- JUST REDUCED - 2 cabins on 7.6 acres - \$265,000
- JUST REDUCED - 4000+ SF home on almost 3 acres - \$265,000
- JUST REDUCED - 1.2+ acres with creek & 1700+ SF home - \$269,900
- JUST REDUCED - Two houses for price of one - \$499,900
- 558 acres near Willow Creek - \$795,000

BERKSHIRE HATHAWAY  
HomeServices  
Montana Properties

406.596.4288 | MELINDA.MERRILL@BHHSMT.COM

### JD PUMPS & REPAIR

Bringing water to the surface for life

JDPUMPS@AOL.COM  
406.682.4997  
Joel Davis

Don't get caught high and dry ...  
Get your water system  
checked NOW!

- Water System Analysis
- Well Inspections
- Constant Pressure & Conventional Systems
- System Design
- 24/7 Emergency Services

Locally owned and operated • 20 years experience



# Ask the Expert

Local businesses have the information you need to make a variety of decisions. Best of all, they are here and available to meet your needs. In our "Ask the Experts" section, we went to these local experts for information on topics important to you.

Ask the Expert forum appears the second Thursday of each month. If you have questions for these area professionals e-mail us at editor@madisoniannews.com.

## FRESH, LOCAL FOOD

**Q:** I moved here in June with my boyfriend who's a fishing guide. I love it here, VC is near with music most weekends, Ennis with so much fun stuff to do. My question is "What is winter like here?"

**A:** Well, that's a good question. First of all, the weather is great, cold clear days, not much wind and as always great access to the wonders of nature. As for the music and fun stuff to do... in the winter, not so much. As a new business owner, I am acutely aware of the welcome seasonal increase in commercial activity. Summer is great, but as Ralph, a wise veteran restaurateur reminded me, "Winter comes every year." Winter is the season when things simmer down but we don't need to let them stop cooking. We can each stay active in our own way. That might mean outdoor sports, showing up to any cultural events available or patronizing the businesses you like. Things will cool off, let's not let them go cold.



**Janet Marsh, Owner**  
SHOVEL AND SPOON • 406-842-7999

## AUCTIONS

**Q:** Do you know where I can get some good used cabinetry/carpentry equipment?

**A:** Sure do! Come on out to Belgrade, this Sunday (Aug. 23). Custom Craft Cabinet Manufacturing Co. is selling out at auction. This is some very high-end professional equipment with many computerized machines. Also selling is all of their hand-held electric and non-electric tools, variety of wood, a 40' refrigerated land/sea container, dump truck and more! We sell just about anything you can think of. So if you are looking for something in particular be sure to check our website regularly for new auction listings to see if we might be selling what you are looking for. Or you can simply drop us an email to SOLD@HAGEDORNAUCTION.COM to be added to our email notification list and be the first to know every time we list a new auction. We hope to see you Sunday, Aug. 23!



**SCOTT HAGEDORN, AUCTIONEER**  
HAGEDORN AUCTION • 406-684-5181

## BUSINESS CONSULTING

**Q:** When I started my business I did all the work but now since I'm busier, I've hired several people. Although more staff was supposed to save me time, I don't have time to do my OWN work and it seems I'm LESS productive! What happened?

**A:** You are experiencing the most difficult career transition to make: moving from an individual contributor role, responsible for your own work, to a manager role, getting the work done through other people. Some of the things you can do to make it easier are to realize you are working in an entirely different way and that you might need time to get the hang of it, set outcomes/results for others, but try not to micromanage HOW they do the task, and realize that your success is really now "our success" since you have a team of people producing results. If you have questions about your transition to manager, call Carol Delisi at Facilitating by Design.



**Carol Delisi, Learning Consultant**  
FACILITATING BY DESIGN • 406-842-5473

## PHYSICAL THERAPY

**Q:** What is tennis elbow?

**A:** Tennis elbow/lateral epicondylitis is known by the backhand return of a tennis player. The injury is overuse of muscles on the outside of the elbow. The chronic overuse/loading, along with gripping of the hand, causes inflammation on the outside of the elbow. Symptoms consist of localized pain and swelling, point tenderness over the elbow. Treatment of elbow pain varies from simplistic, i.e., "ice" activity modification, bracing, soft tissue massage, stretching to surgical intervention. There are many approaches by different healthcare providers. Tennis elbow/lateral epicondylitis is a chronic use injury. This condition needs an EXPERT. The ONLY PROVEN provider with over 20 years of experience, treating elbow pain. Ennis Physical Therapy, Robert Sahli, PT, ATC, the Only Expert in the Madison Valley, 682-3112.



**Robert (Bob) Sahli, PTATCLAT**  
ENNIS PHYSICAL THERAPY PC • 406-682-3112

## BIRDING

**Q:** What is the molting process for birds?

**A:** Just as people make seasonal wardrobe changes, many birds are beginning a transformation of their own, losing and replacing their feathers in a process known as molting. Molting is when a bird replaces some or all of its feathers. This process requires a lot of energy and may take up to eight weeks to complete. Molting season varies by species and time of year. Right now many birds are beginning their main molt of the year. Though some birds may lose patches of feathers and appear "balding," most birds' feather loss and replacement are far less noticeable. Feathers are made of more than 90% protein, primarily keratins, so every molting bird needs extra proteins to grow strong feathers for proper flight and effective insulation. For the next few months, offer high-protein bird foods, such as Nyjer, peanuts, Bark Butter and mealworms, to ensure that your birds have a reliable source of protein to help them with molting.



**Debi Naccarto, Owner**  
WILD BIRDS UNLIMITED • 406-219-2066

## INSURANCE

**Q:** Car insurance protects your car, not the people inside of it: true or false?

**A:** Included with most policies is "Medical Payments to Others" (often called Med Pay) which covers the medical payments of all passengers in your vehicle if they are injured in an accident. Med Pay will cover the medical costs resulting from an auto accident, regardless of who was at fault. Only injuries caused directly by the accident will be covered by Med Pay, and limits are usually below \$5,000. It's also very important to point out that Med Pay is not a replacement for health insurance. Yes, your health insurance can also cover your injuries if you're in a car accident; the difference is that Med Pay will cover the other people in the car. Do you or your child have any coverage from your auto policy while walking down the sidewalk? Call us to discuss this coverage and other very important coverage's provided by your auto policy.



**Ty Moline, Agent**  
THE AGENCY INSURANCE DIVISION • 406-682-4202

## EYE CARE

**Q:** At what age should I schedule my child's first eye exam?

**A:** Every child's eyes should be screened - even from birth - for vision problems and eye diseases by your primary health care provider. A referral to an optometrist is common when a provider or parent suspects a problem. Many parents make vision and eye health examinations with an optometrist part of their children's annual wellness exams. A child's first comprehensive vision examination should be scheduled in the pre-school year, prior to kindergarten. A comprehensive examination tests distance and near vision, how well the eyes work together, focusing ability, eye muscle balance, color vision and overall health. While the majority of young children enjoy good vision and eye health, according to the American Optometric Association, 5-10% of preschoolers and 25% of school-aged children have vision problems. Vision and eye health examinations are crucial to identify issues that could hinder learning, 80% of which happens visually, at an early age. At Eyes on Main, we welcome patients at every stage of life.



**Dr. Jeff Squire**  
EYES ON MAIN • 406-577-2380

## REAL ESTATE

**Q:** What factors should you consider when pricing your home for sale?

**A:** Everyone wants to sell for the highest price possible but a number of factors should influence how to price your home. Always consider the current real estate market conditions for your area. A knowledgeable real estate agent can provide you with solid facts about what is truly happening in the market. Location, lot size, condition of your home and amenities can all affect the price. The listing and sales prices of similar homes should also be considered. Finally, consider your level of motivation for selling. On the other side, there are a few factors that do not affect the price of your home. These would include the profit you would like to make from the sale, the amount of money you may have invested in improvements, or the original price you paid for your home.



**Tanya Matson, Sales Associate**  
BERKSHIRE HATHAWAY • 406-580-6987

## SWIMMER'S ITCH

**Q:** What is swimmer's itch?

**A:** Swimmer's itch is caused by the larva of a small free-swimming parasite associated with waterfowl and shallow water. The parasite lives in snails and people can come in contact with it while swimming or wading in shallow water where the parasite lives. The itch is a result of a person's allergic reaction to the parasite as it is in the skin. As with all allergic reactions, the severity of the reaction can vary greatly, so certain people may need to seek medical attention. For most people, the rash clears in a couple of days and can be treated with over the counter itch creams or soaks in baking soda or Epsom salt baths. If the rash does not clear up, seek medical attention. Ways to prevent the infection include not swimming in the water when there is a large presence of the parasite or after swimming rinse off with fresh water and dry yourself vigorously with a towel. The parasite cannot be transmitted from person to person.



**Madison Valley Medical Center**  
WWW.MVMEDCENTER.ORG • 406.682.6862

## FITNESS

**Q:** Why use a fitness facility?

**A:** There are lots of reasons! For example:

- Ellipticals, treadmills & bikes
- Stairmasters & Jacob's Ladder
- Rowing machine
- Free weights and 16 weight machines
- Bosu balls, balance balls, weighted balls & kettle balls
- A variety of classes included in your membership fee:
  - aerobics/core/stretching/yoga/women's fitness/HIIT
- A variety of classes offered by outside instructors
- Contours: fitness for women!
- Steam rooms and showers
- Tanning beds and tanning products
- Protein shakes and meal replacement bars
- Nutrilite products: XS energy drinks and twist tubes
- Fitness instruction and assistance from qualified staff (You just can't fit all of this into your home!)

In the next few months, you will hear from individuals whose lives have been impacted due to their involvement with the gym.



**Madison Square Athletic Club**  
406-682-4560

# Ask the Expert



# TRAVELING MANOR



Submitted by Melody Clark  
**Madison Valley Manor residents traveled to Sheridan** to participate in the senior games. They captured the traveling trophy. Residents attended The Phantom Of The Opera in Virginia City, compliments of Bill Koch.

# Virginia City: Montana's first incorporated town (Part two)

Submitted by Rick and Susie Graetz

As with the other mining camps, the placer gold did not last forever and Virginia City began its decline. By the late 1860s, the population had dropped to about 2,000, and by 1890, only 600 people remained.

In 1875, several controversial votes turned over the seat of the territorial government to the thriving town of Helena, formerly Last Chance Gulch. In the early 1900s, a short-lived new life was given to Virginia City with the dredging of gold in the gulch. By 1937, though, this activity, too, ended.

Today's Virginia City, with its 190 people, is a stable, tourist-oriented community serving as the county seat of Madison County and an important link to Montana's heritage. Views of the past have been well preserved here through the magnificent restoration of its buildings.

Years ago, Charlie and Sue Bovey, ranchers from the Great Falls area, began a long-term

love affair with this southwest Montana community – one that grew into the first major, privately funded preservation program in the nation. The work they did is of monumental proportions and has preserved Virginia City's 1860s look. Nearly all of the town's buildings are original with none brought in from elsewhere.

The Virginia City Players, the oldest continuing summer-stock theater operating west of the Mississippi, persists in its quest to draw and entertain visitors just as its predecessors' performances for the miners did more than a hundred years ago.

A stunning, authentically restored 1910, Number 12 Baldwin steam locomotive trundles the scant 1 1/2 miles on the Alder Gulch Short Line to Nevada City. Operated on weekends by volunteer engineers, this mechanical work of art adds to the pioneer town atmosphere and attracts train buffs of all ages. The sound of the steam being released and the

whistle blowing always causes excitement. During the week, a gasoline-powered engine moves the cars. Much of the credit for the success of the railroad goes to John Larkin of Michigan.

Only a dozen or so of Nevada City's original buildings remain. What prevails here now is also a result of the magic of the Boveys.

In the 1950s, in order to create the realistic look of an early-day Montana gold camp and save historic buildings, the Boveys had many period edifices from the late 1800s, moved here from other parts of the state and Wyoming. The structures are so well laid out that to the uninitiated it appears that Nevada City is a town everyone exited at once, leaving the buildings behind in good standing.

The state of Montana, through the Heritage Commission, owns the Bovey assets in Virginia City and all of Nevada City — a total of 248 buildings. The job of preserving and con-

tinuing the restoration is now in the hands of the Montana Heritage Commission, a branch of the Montana Historical Society. The commission received a \$1 million grant from the National Park Service for building stabilization. The first project, the Sauerbier Blacksmith Shop, recently was completed. Another million-dollar grant, this one from Ruth McFarland, built the McFarland Curatorial Center, a state-of-the-art preservation and restoration center.

The lure of exploring one of the cradles of Montana history makes Alder Gulch a place well worth spending several days in. Its physical setting between the Tobacco Root Mountains and Gravelly Range are an added attraction. Public roads approach scenic sites and signs of yesterday are everywhere.

The gulch and Virginia City come alive in the summer, but the quiet of fall, coupled with that season's gold and orange, also makes it a good time to see this Montana treasure.

**UNDER NEW OWNERSHIP**



**MONTANA MAC'S**

(in old Mill Creek Inn building)

**SUNDAY - THURSDAY: 7 AM TO 9 PM**  
**FRIDAY - SATURDAY: 7 AM TO 10 PM**

*Mac-Attack Burger*  
*Over 1 lb of Meat!*

*Serving delicious*  
*Breakfast • Lunch • Dinner*

*Baby Back Ribs! Thursday Nights*  
*Surf & Turf! Friday Nights*  
*Prime Rib! Saturday & Sunday*

102 Mill Street • Sheridan • 406-842-7298



Virginia City cemetery



**BERKSHIRE HATHAWAY**  
 HomeServices  
 Montana Properties

 <b>GRAVELLY TRAIL, ENNIS</b> \$498,000   #199081   HOME ON ACREAGE	 <b>Holly Driskill</b> SALES PROFESSIONAL 451-3527	 <b>WISCONSIN CREEK, SHERIDAN</b> \$300,000   #207451   NEW LISTING	 <b>Kay Colwell</b> BROKER 596-1077
3 bd, 2 ba, 2,396± sf custom built home, located on 20± acres in Madison River Ranches, this home speaks rustic, bunk house for guests, breathtaking views, fenced for horses, close to private fishing on the Madison River		162± acres of recreational property along the creek, remote property w/ private access through BLM, several cabin blding sites, or places to park an RV, beautiful open hill sides, 2 parcels, access from Wisconsin Crk Rd, via private access rd	
 <b>SHINING MOUNTAINS II, ENNIS</b> \$179,900   #208010   NEW LISTING	 <b>Melinda Merrill</b> BROKER 596-4288	 <b>MT HIGHWAY 287 NORTH, ENNIS</b> \$165,000   #207777   RARE FIND	 <b>Tanya Matson</b> SALES PROFESSIONAL 580-6987
16± acres offers creek, small trees and views, enjoy elbow room and access to trout stalked lakes, Forest Service and BLM, great spot for your new home and recreational opportunities, live in the Gravelly Mountains and enjoy views of the Madison Range and Tobacco Roots, power all around and gravel road access		A rare find, commercial property with great location and no covenants, 3.5± acre property, direct access from MT HWY 287, property includes 36'x56' shop with power, water and heat and 17'x76' mobile home, location is ideal for commercial opportunity or land with good views	
 <b>NOACK ROAD, ENNIS</b> \$129,000   #202259   CREEK AND VIEWS	 <b>Riki Dilschneider</b> BROKER 581-5155	 <b>LOTS 1-3 &amp; 10-12, VIRGINIA CITY</b> \$47,500   #204665   FOR SALE	 <b>Annie Jorgensen</b> SALES PROFESSIONAL 570-5663
Creek, trees and majestic views, 20± acres with no covenants, varied terrain, privacy and seclusion, property offers several great building sites, Eight Mile Creek flows through corner of acreage, power nearby, located 10± miles west of Ennis		64± acres located on the north side of Virginia City, these building lots overlook the Ruby Valley, utilities run on the south boundary of the property, close to many recreational opportunities, great building lots in the middle of an outdoor enthusiast's dream.	

BHHSMT.COM

ENNIS: 406.682.5002 | SHERIDAN: 406.842.5650 | TWIN BRIDGES: 406.684.5686

© 2015 BHH Affiliates, LLC. An independently owned and operated franchise of BHH Affiliates, LLC. Berkshire Hathaway HomeServices and the Berkshire Hathaway HomeServices symbol are registered service marks of HomeServices of America, Inc.® Equal Housing Opportunity.



**ON YOUR NEXT VISIT TO ENNIS TRUE VALUE, YOU'LL SEE THAT WE ARE MAKING NEW PROGRESS WITH OUR REMODELING PROJECT**

**WE'RE HARD AT WORK TO MAKE YOUR SHOPPING EXPERIENCE EVEN BETTER WITH NEW PRODUCTS AND A NEW APPEARANCE**

**BEHIND EVERY PROJECT IS A**  
*True Value.*

**6 SUNRISE LOOP, ENNIS, MT 59729 | 682-4015**



# Tobacco Root Mountains Care Center : July happenings

Submitted by Roseann Troyer  
TRMCC

July was jam packed with several extra activities at the Tobacco Root Mountains Care Center. On the very first day we met our new administrator Gary. He is from Helena! He is a registered nurse and has worked as a director of nursing, state surveyor and consultant.

We started our month on the first with a guided tour of Woodson's Ranch, Ruby Valley Habitat Foundation a very beautiful serene green well-kept secret. Not only did we see deer and pheasants but we also spotted two hen turkeys with 18 poults (baby turkeys). They were quite the sight; we had to stop the van to let them cross the road. After our interesting tour we traveled to Alder Fire Hall and made use of their picnic tables and shade. After a very filling and tasty lunch, prepared by our dietary department we journeyed up to Jasmine Creek in the Upper Ruby.

Due to fire restrictions we only lit a portion of our fireworks. However everyone had a choice of huckleberry, strawberry or cookies and cream ice cream. Thanks go to the Sheridan Fire Department for helping out and having an engine standing by.

Our resident council met on the July 7, and helped plan more events for the summer. The next day, four very hard working residents and activities staff spent the afternoon making and baking dog treats.

On July 10, we had two major events: the Silver Bow Stompers arrived at 11 a.m. They danced and socialized for over an hour. They were garbed in red, white, and blue. The birthday party was hosted by Women of the Church of Latter Day Saints. One resident, Maxine Byler, celebrated her birthday in July. Helping with the well-attended birthday party were: Kristen Clark, Bonnie Stiles, Corinne Jensen, Susie Hampton, Julie Larson, Valerie Rossiter, Jenell Shaw with Lauren,

Anna Freeker. Children present were Andrew, Eli, Zaujchie and Gwen Godfrey. The ladies served flavorful cake – fresh angel food cake smothered in fresh strawberries. Maxine received a colorful blouse and an incredibly soft blanket as gifts.

The best kind of aromatherapy was practiced on July 16. Activities department fried up a big batch of fry bread. While it was still fresh and warm the residents sprinkled the fragment pieces with cinnamon sugar or powdered sugar.

A long leisurely bus ride was the event of the afternoon the next day. A full busload of eight residents and two staffers tooled about the countryside. We checked out Ruby Town and saw the location of the first county poor farm. Some of the buildings are still intact and standing. Just before Ruby Town we spied a large herd of grazing antelope. They watched us watching them. Next stop, Virginia City then up to Boot Hill to take in

the incredible view. Back to Alder for treats and home again.

Lorie's Pond was the location of our next big event where we went fishing. We left at 10 a.m. and by 11 a.m., we had caught three fish, but the biggest one got away. It was a perfect day; a little breeze to keep off the bugs, sunshine, good food and good company. Five residents attended and four staff members baited hooks, cast out lines and served a well-made picnic lunch.

Our fire pit lunch was a big hit. Charred juicy hot dogs and sticky sweet smores were enjoyed by all. The stream was gurgling next to our tables – it was very delightful. We definitely will be using the fire pit in the near future.

July ended with us eating chips, summer sausage, cheese and dip while watching the Andy Griffith Show. It was a riot.

It is August and school starts in Sheridan in less than two weeks! Where has the summer gone???



Residents gear up to roast a hot dog at our fire pit bbq.

**Lot 3 Valley Garden Ridge**  
\$117,000 • #205112  
A prime 1.2+/- acre lot with breathtaking views of the Madison Mountain Range



**Lot 39 Valley Garden Golf Village**  
\$25,000 • #207617  
Affordable lot located just minutes from downtown Ennis and the Madison River



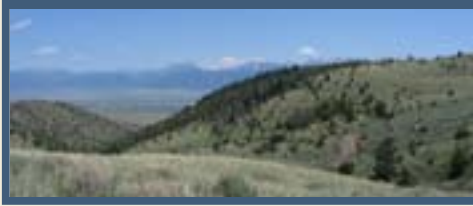
**The Last Best Place**  
\$49,900 • #206690  
1+/- acre parcel with wrap around mountain views, horses welcome and rural feel



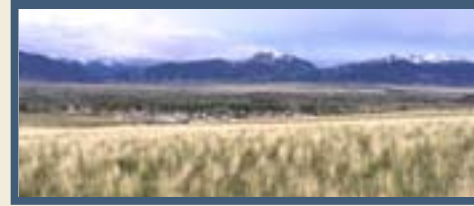
**Pronghorn Meadows**  
Starting at \$44,900  
Desirable subdivision with strong covenants to protect your investment, 3 lots available with varying acreage



**Shining Mountains**  
Starting at \$46,000  
Multiple lots offer majestic views and access to private lakes, Forest Service and BLM for year round recreation

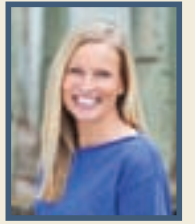


**Centennial Heights**  
Starting at \$74,000  
Several lots in this small subdivision with spectacular location and views, close to downtown Ennis



**Rikki Dilschneider**  
-BROKER-

Please call me for more information on these or other vacant lots!



406-581-5155  
rikki.dilschneider@gmail.com  
101 E. Main Street,  
Ennis, MT 59729

An independently owned and operated franchise of BHH Affiliates, LLC. Berkshire Hathaway HomeServices and the Berkshire Hathaway HomeServices symbol are registered service marks of HomeServices of America, Inc. © Equal Housing Opportunity.

## Ruby Valley Aviation Presents



# Fly-In

August 29, 2015  
Twin Bridges, MT 751

Featuring



## Saturday, August 29th

- 7:30 am Pancake Breakfast - Rotary Fundraiser
  - 9:00 am Young Eagle Rides Begin
  - 10:00 am Games for Pilots
  - 11:00 am Aerobatic Performance
  - 11:00 am Concessions-Sheridan Close Up
  - 1:00 pm Aerobatics Performance
  - 4:00 pm Ping Pong Ball Drop
  - 5:00 pm Aerobatic Performance
  - 6:00 pm Potluck Dinner
- Main dish catered by MT Zest, LLC



Contact Kendra Horn for more information  
406-684-5335



**ENNIS ON THE MADISON**  
*Fly fishing festival*  
 2015  
 ennis montana

**LABOR DAY WEEKEND**  
**September 4 & 5**

www.madisonriverfoundation.org

Festival custom T-shirts, poster and mugs with Lexi Sundell's design are available at the ENNIS CHAMBER OF COMMERCE or the MADISON RIVER FOUNDATION's office in the Lone Elk Mall.

*Festival hats in 3 colors are also available.*

**MOUNTAIN VIEW TV & SATELLITE**

**ELECTRONIC SUPPLY**

(406) 682-7858  
 (406) 596-1513  
 mlnvw@3rivers.net

Jim Forsberg  
 Mountain View TV & Satellite, Inc.  
 6 Sunrise Loop Ste B  
 Ennis, MT 59729

**Coming Soon**  
**Robbers Roast**

Stop by our Coffee Kiosk located next to the historic Robbers Roast  
 2837 Mt. Hwy. 287  
 406-925-1033  
 720-261-6345  
 Tyler & Stephanie Landis  
 Owner, Operators

Enjoy one of our many delicious drinks & snack items.  
 Opening 6:00 a.m. daily  
 Bring in this ad and receive a 2<sup>nd</sup> drink half off

Building & Maintaining Madison County  
**CM Construction**  
 Licensed & Insured

Chris Striegel - Cameron, MT  
 Cell 805-458-9178

Construction-New & Remodel  
 Home & Yard Maintenance

Insurance rates going up? Are you curious whether you could be saving money? Call us....we'll do the shopping for you!

Dean Derby Insurance Agency - 406-556-0893

Farm/Ranch. Autos. Home. Business.

**Sherwood Swanson Drywall Inc.**

Hanging Custom Textures      Finishing Painting

Office: (406)682-5438      Cell: (406)599-3524

**Pro-Vac Chimney Sweeps**

All Sweeps CSIA certified.

**CLEANING SPECIAL!**  
**\$10 OFF Any System**  
 Additional \$20 OFF for two systems  
 Ask about our duct cleaning special pricing  
 Offer good through 8/31/15. Coupon must be presented at time of service. This promotion expires 8/31/15. May not be combined with any other offer.

Call us Now!  
 www.provac-chimney-sweeps.com  
 406-599-4919

**BARNEY CONSTRUCTION, INC.**  
 WHEN QUALITY COUNTS.

Residential Contracting  
 406-581-9388  
 barneyconstruction@yahoo.com

**BATS R Us**

ALPINE ANIMAL DAMAGE CONTROL  
 Live Trapping & Relocation

Squirrels - Skunks - Birds - Raccoons - Snakes  
 Bats - Beavers - Coyotes - Opossums - Otters  
 Odor Remediation - Attics & Crawl Spaces

Bruce Bartow (208) 521-4235

**Madison Valley Plumbing & Heating**

Serving Madison County for over 30 years

- New Construction
- Remodels
- Service Work
- Winterization

Jerry Singleton  
 Master Plumber #811  
 Phone: 406-682-7913

P.O. Box 1115 • mvp@3rivers.net • Ennis, MT 59729

**ENNIS MEALS ON WHEELS**

TUESDAY THROUGH FRIDAY  
 11:30 AM - 1 PM  
 MADISON VALLEY MANOR

**WEDNESDAY, AUGUST 19:**  
 SPAGHETTI, MEATBALLS, SPINACH, GARLIC BREAD, CARROT CAKE

**THURSDAY, AUGUST 20:**  
 RIBS, BAKED BEANS, PEAS BANANA SMOOTHIE

**FRIDAY, AUGUST 21:**  
 FISH SLIDER FF, COLESLAW CHERRY CHEESE CAKE

**TUESDAY, AUGUST 25:**  
 HAM, SCALLOPED POTATOES BEETS SHORTBREAD COOKIE

**WEDNESDAY, AUGUST 26:**  
 BEEF LASAGNA SPINACH PUMPKIN PIE BAR

**ENNIS ON THE MADISON Fly fishing festival 2015**  
 ennis montana

An event produced by and for the benefit of the Madison River Foundation

**Fri. September 4<sup>th</sup>**

9am - 1 pm Kid's Program (Grades 1,2,3) with Wayne and Janelle Phillips  
 1 pm - 2 pm Craig Mathews & John Juracek - An open forum  
 1 pm - 5 pm Casting Casino - Casting for Cash  
 2 pm - 3 pm Tim Tollett - Frontier Anglers, Dillon, MT - Fly Fishing in New Zealand  
 2 pm - 4 pm Casting clinic with Bruce Richards, Scientific Anglers/Orvis  
 2 pm - 5 pm Fly Tying: Learn from the experts  
 3 pm - 4pm Trent Sizemore - Taking great fly fishing photos  
 4:30pm - 6:30pm Hank Patterson movie at the Ennis Theater  
 - Come eat, drink, and laugh a lot!

**CLACKACRAFT RAFFLE**  
 Brand new, 16-foot, fully equipped drift boat & trailer

**Sat. September 5<sup>th</sup>**

9 am - 5 pm Casting Casino - Casting for Cash  
 9 am - 10 am Kelly Galloup  
 10 am - 11 am Kayak fishing  
 10 am - Noon Casting clinic with Ford Rollo  
 11 am - 2 pm BBQ lunch - Burgers and Brats  
 11 am - Noon Travis Morris - Fly fishing for Montana bonefish (carp)  
 Noon - 1 pm Skip Gibson - Spey casting clinic Ennis town Fishing access site  
 1 pm - 2 pm Mike Lawson - Henry's Fork Anglers  
 2 pm - 5 pm Fly Tying - Learn from the experts  
 2 pm - 5 pm Fly Casting competition (John Way, Tackle Shop & Bruce Richards)  
 Categories: children, women, angler, and expert  
 2 pm - 3 pm Dan Delekta - Beartooth Fly Fishing  
 3 pm - 4 pm Ralph Cutter - What Do Trout Want?  
 4 pm - 5 pm Jeff Currier -- Four Seasons of the Yellowstone Trout Bum  
 Sponsored by Scientific Anglers  
 5 pm - 6 pm Bob Jacklin - Jacklins Fly Fishing  
 - History of Fly Fishing & Fly Shops in the West Yellowstone area  
 6 pm Main Street BBQ Ribs and Fixens (John Rolfe, The Alley Bistro)  
 6 pm - 9 pm Live Music by Comstock Lode  
 6 pm - 8 pm Bucket Raffle drawings  
 8 pm Clacka Craft drift boat drawing

All Festival events held in Peter T's Park at the First Madison Valley Bank on Main Street in downtown Ennis, Montana.  
 Note: Schedule is subject to change.

THANK YOU TO OUR MAJOR SPONSORS

**WE'RE ON THE WEB!**

WWW.MADISONIANNEWS.COM

**CHECK US OUT!**



# SNAPSHOTS FROM THE FAIR



Photo courtesy Margaret Ore  
Nolan Ore poses with his chicken and ribbon.



Caitlin Avey/The Madisonian  
The parade on Sunday closed the week of fair activities.



Photo courtesy Margaret Ore  
Jacob Nye shows his pig at the fair.



Caitlin Avey/The Madisonian  
Parade marshals Nick and Ann Novich led the parade.



Photo courtesy Margaret Ore  
A chicken is examined during judging.

## DEQ accepting comments on septic sludge permit application in Madison County

Submitted by Lisa Peterson  
PUBLIC INFORMATION OFFICER  
MT DEPARTMENT OF ENVIRONMENTAL QUALITY/  
PERMITTING AND COMPLIANCE DIVISION

The Montana Department of Environmental Quality is accepting public comment on a proposed septic land application site in Madison County.

Ray Smail, owner of South West Septic, has submitted an application for the approval of a site for the land appli-

cation of septage, portable toilet waste, sump pumpings, graywater, and grease trap waste on private land owned by the applicant. Septage is the liquid and solid material removed from a septic tank, cesspool, portable toilet or similar treatment works that receives only waste and wastewater from humans or household operations. The land application of septage is an economical and environmentally sound practice. The application at this site

will add nutrients, organic matter, and moisture, improving the soil for the continued production and enhancement of grasses at the site. The acreage proposed for land application activity is located more than 500 feet from any occupied or inhabitable building. DEQ rules require setbacks of greater than 150 feet from surface water and more than 100 feet from any state, federal, county or city-maintained road. The proposed sites are

more than 100 feet from any drinking water supply. DEQ has prepared a draft Environmental Assessment for the proposed site. It can be viewed at: <http://deq.mt.gov/ea/SepticPumpers.mcp>. Comments must be submitted by Aug. 28, 2015, to DEQ Solid Waste Section, PO Box 200901, Helena, MT or emailed to [DEQwutbcomments@mt.gov](mailto:DEQwutbcomments@mt.gov). For more information about the applications or the permit process please call the DEQ Solid Waste Program at 444-5300.

## Public invited to comment on proposed fishing regulations

Submitted by Andrea Jones  
MONTANA FISH, WILDLIFE & PARKS

Montana Fish, Wildlife & Parks' Region three will host two public meetings next week to give the public the opportunity to discuss proposed fishing regulations changes for March 2016 through February 2017. The meetings take place at the times and dates below:

- Wed. Aug. 19, Butte – Days Inn Butte (2700 Harrison Ave.), 6-8 p.m.
- Thurs. Aug. 20, Bozeman – Regional Headquarters (1400 S. 19th Ave.), 6-8 p.m.

While most current regulations would remain in effect, the proposed are largely aimed at making regulations easier to follow and increasing angling opportunities.

Specific to Region three, the Fisheries Division has proposed the following changes among others:

- Allowing rivers and streams to remain open all year;
- Allowing one cutthroat trout in the combined trout limit for rivers and streams;
- Allowing one rainbow trout in the combined trout limit on the Jefferson River;
- Allowing harvest of five cutthroat trout daily from Hyalite Creek below Hyalite Reservoir;
- Simplifying Madison River regulations from Heben Dam to Ennis Reservoir

Statewide proposed changes are available for review and comment on the FWP website at [fwp.mt.gov](http://fwp.mt.gov). Click "Fishing" and then "Regulations." Comments

may also be mailed to Joel Tohtz, Fisheries Management Bureau Chief, Montana Fish, Wildlife and Parks, P.O. Box 200701; Helena, MT 59601; or email to [fwpfsh@mt.gov](mailto:fwpfsh@mt.gov). Comments must be received by Sept. 12. The Fish and Wildlife Commission will take final action on the regulations in October.



**K&L Mortuaries & Crematory, Inc.**  
842-5731

*Continuing to build relationships and meet your funeral and cremation needs since 1964*

**Now Operating a Newly Installed Crematory To Meet Our Cremation Customer Needs**

Pre-need Services Available  
Twin Bridges ~ Ennis ~ Three Forks ~ Sheridan ~ Harrison ~ Whitehall ~ Boulder

**SOUTHMONT FORM & FINISH**  
FULL SERVICE CONCRETE CONTRACTOR

- Pump Truck Service • Ground Heater Rental
- Footings, Walls, Slabs • 60' Boom Truck Rental
- Commercial & Residential Concrete
- Sprayed Foundation Coating & Waterproofing
- Decorative/Custom Concrete/Stamped & Overlay

FREE ESTIMATES - Licensed & Insured  
**\*Serving All of Southwestern Montana\***

Mick & Suzanne Hubner - Bob Hubner  
Mob.: 406-925-1864 ~ Phone: 406-682-7253 ~ Fax: 406-682-5425  
e-mail: [hubner@3rivers.net](mailto:hubner@3rivers.net) - Ennis, Montana

**Monsanto's ROUND UP**  
Diagnosed with a serious medical condition, including Non-Hodgkin's Lymphoma, after exposure to Monsanto's Round Up pesticide? You may be entitled to compensation

**Call Andrus Wagstaff, PC**  
Toll Free: 866-795-9529  
ADVERTISEMENT

Gasoline 3.24 <sup>7</sup>/<sub>10</sub>  
Premium Gasoline 4.13 <sup>9</sup>/<sub>10</sub>  
Diesel 5.000  
Dyed Diesel

**IT'S JUST NOT WORTH IT**  
DYED DIESEL IS FOR OFF-ROAD USE ONLY. SMALL SAVINGS AT THE PUMP COULD COST YOU \$5,000 IN FINES.

REPORT FUEL TAX EVADERS BY CALLING 1-888-FUEL-LAW. MDTA DEPARTMENT OF TRANSPORTATION

**ENNIS PHYSICAL THERAPY**  
Specialized/Individualized patient focused care!

Patient care based on over 20 years of experience

Robert "BOB" Sahli, PT/AT/CLAT  
OLDEST Healthcare Provider in the Madison Valley  
Physical Therapist/Licensed Athletic Trainer  
(ph) 406-682-3112 • (fax) 406-682-3132

**Ridgeline Flooring**

Travis Lister  
406-600-3891  
[ridgelineflooring@gmail.com](mailto:ridgelineflooring@gmail.com)  
Installation & Repairs  
Carpet, vinyl, wood, laminate, VCT, LVT tile  
Licensed & Insured

Professional • Reliable • Honest

**FOR SALE**  
**RIVERSIDE MOTEL & RV PARK**  
2.43 ACRES  
BROKERS PROTECTED  
406-682-4240

**4 RIVERS CONCRETE PRODUCTS**  
SHERIDAN, MT  
WHITEHALL, MT

Quality Concrete - Premium Service

★ ★ ★ ★ ★  
Front Discharge Trucks  
Ready Mix Concrete  
Washed Sand & Gravel

842-5735 • 287-3728

# STATEWIDE CLASSIFIED AD NETWORK

**EDUCATION / INSTRUCTION**

**TRUCK DRIVER TRAINING.** Complete programs, refresher courses, rent equipment for CDL, Job Placement Assistance. Financial assistance for qualified students. SAGE Technical Services, Billings/Missoula. 1-800-545-4546. #306

**HELP WANTED**

**HIGH-TECH CAREER** with U.S. Navy. Elite tech training w/great pay, benefits, vacation, \$\$ for school. HS grads ages 17-34. Call Mon-Fri (877) 475-6289, or [jobs\\_seattle@navy.mil](mailto:jobs_seattle@navy.mil) #307

**NAVY RESERVE HIRING** in all fields. Serve part-time. Paid training & potential sign-on bonus. Great benefits. \$ for

school. Call Mon-Fri (800) 887-0952, or [jobs\\_seattle@navy.mil](mailto:jobs_seattle@navy.mil) #308

**HANDS-ON EXPERIENCE** Paid training with U.S. Navy. Good pay, medical/dental, vacation, great career. HS grads ages 17-34. Call Mon-Fri (877) 475-6289, or [jobs\\_seattle@navy.mil](mailto:jobs_seattle@navy.mil) #309

**THE NAVY IS HIRING** Top-notch training, medical/dental, 30 days' vacation/yr, \$\$ for school. HS grads ages 17-34. Call Mon-Fri (877) 475-6289, or [jobs\\_seattle@navy.mil](mailto:jobs_seattle@navy.mil) #311

**NORTHERN STAR COOPERATIVE** in Deer River MN is seeking a qualified General Manager. This is a multi-location energy, C store and grocery cooperative with sales of \$56 million. Successful agricultural business management experience desired. To Apply <http://tinyurl.com/ov2kxu6>. For more info contact David Lemmon, 320-283-5938 or Email [david.lemmon@ch-sinc.com](mailto:david.lemmon@ch-sinc.com) #312

**FOR SALE**

**FOR SALE / SPORTS CARS**

1969 Mustang Convertible Survivor, 351-4, M Code, original black paint, deluxe interior, auto. Always garaged, no rust ever. Build sheet, Marti Report. First time offered for sale. \$34,999/ obo. 802-349-4212 #313

**MORTGAGES / CONTRACTS**

**EQUITY LOANS ON NON-OWNER OCCUPIED MONTANA REAL ESTATE.** We also buy Notes & Mortgages. Call Creative Finance & Investments @ 406-721-1444 or visit [www.creative-finance.com](http://www.creative-finance.com) #314

**BUSINESS OPPORTUNITIES**

Build your own business by custom building with Heritage Homes! Our system saves time and protects your bottom line! [www.hhofne.com](http://www.hhofne.com) Call Darrin at (800) 759-2782 #315

**REAL ESTATE**

Real Estate. NW Montana. Tungstenholdings.com. (406)293-3714 #316





# PHOTO OF THE WEEK



Moose takes a dip in Ennis Lake.  
Submitted by Jeffery Borsuk

## Madison Valley Pumps

Monte Davis  
Owner/Operator  
406-682-4033  
monte0330@icloud.com  
45 Depot Rd  
Ennis, MT 59729



## GET RESULTS.

advertise in The Madisonian. call 682-7755 to make a plan.

## B & B CHINKING LLC

Restoration and Maintenance Work  
New Construction & Existing Buildings  
Chinking, Media Blasting, Staining and Log Repair

We Guarantee Our Work & Perma Chink Material



406-925-1074  
4loghomes@gmail.com



**LODGEPOLE JOHN**  
OLD STYLE, HISTORIC JACK FENCE MADE THE WAY THE OLD TIMERS DID. JACKS HANDMADE. THE BEST HORSE FENCE. VERY EASY ON WILDLIFE.

581-3424 • lpjohn@3rivers.net • lodgepolejohn.com

Acrylic paintings also available on my website.



**Bozeman Deaconess**  
UROLOGICAL ASSOCIATES

NOW PROVIDING SERVICES IN ENNIS.



Gregory Pritham, MD



J. Bruce Robertson, MD



Bjorn Sauerwein, MD



Stewart Chumbley, FNP, BC

Bozeman Deaconess Urological Associates now provides services at Madison Valley Medical Center, at 305 N. Main St. Our urologists specialize in a full range of urological care including the treatment of prostate, kidney, adrenal, testicular and bladder cancers; sexual dysfunction; infections of the kidney, bladder, prostate and testes; male infertility; prostate disorders; kidney stones and urinary incontinence.

Call Bozeman Deaconess Urological Associates at (406) 414-5300 to make an appointment.

(406) 414-5300 | bdhg.org/urology

## 4 PAWS RESCUE PET OF THE WEEK



### BLACK CAT

Well hello there. How ya doing? Me? Well, I'm lonely and blue, 'cause I don't have you. Had a family once, but they moved and didn't take me or Nella. They took the dogs and 1 cat, but said they couldn't take us. Made us so sad. It would be so great having a family who would love me, play with me and pet me. I'm a healthy, nice lady, house trained of course and indoor only as I am declawed in front. Would you be the one who will? Please, oh purty please, come soon. You can call Misty at 439-1405 to meet and adopt me. Prayerfully, BC

SPONSORED BY:

**White and White**  
VETERINARY

682-7151

5098 HWY 287 N • ENNIS, MONTANA

Get Results.

advertise in The Madisonian  
406-682-7755



## MADISON COUNTY WEATHER

### Thursday



Mostly clear. Highs 75 to 85.  
Lows 45 to 50.

### Friday



Sunny with a 20 percent chance of showers and thunderstorms. Highs 65 to 75.

### Saturday



Partly cloudy with a 20 percent chance of rain showers. Highs 55 to 65.

### Sunday



Mostly clear. Lows 40 to 50.  
Highs 65 to 75.

### Monday



Sunny. Highs 70 to 80.

## Quote of the Week:

“Laughter is the sensation of feeling good all over and showing it principally in one place.”

Josh Billings

The Old Hotel is Open for

2015 SUMMER SEASON!

### Dinner

Tuesday thru Saturday  
5pm to 9pm

### Brunch

Saturday 8am to 1pm  
Sunday 9am to 2pm

Reservations Highly Recommended



Rustic Charm, Brilliant Cuisine in Twin Bridges...  
101 E. 5th Avenue • Twin Bridges, MT  
www.theoldhotel.com  
406-684-5959

Get Results.

s.hill@madisoniannews.com

## RALPH HAMLER

LICENSED SANITARIAN  
Septic Application & Design  
Subdivision Applications

406-842-5788  
Cell: 406-596-0437  
Sheridan, MT  
ralphhamler@gmail.com

**R&M Rentals Inc.**  
Ron or Martha Noack  
4995 US Hwy 287 N. ~ Ennis, MT 59729

Daily & Weekly Rentals  
Insurance Rentals  
Economy & Midsize cars, SUV's  
Free Local Pickup  
Major Credit Cards Accepted  
Email: [xpressrenta\\_car@yahoo.com](mailto:xpressrenta_car@yahoo.com)  
Reservations Appreciated  
406.682.7039  
After Hours Call 406.570.8133

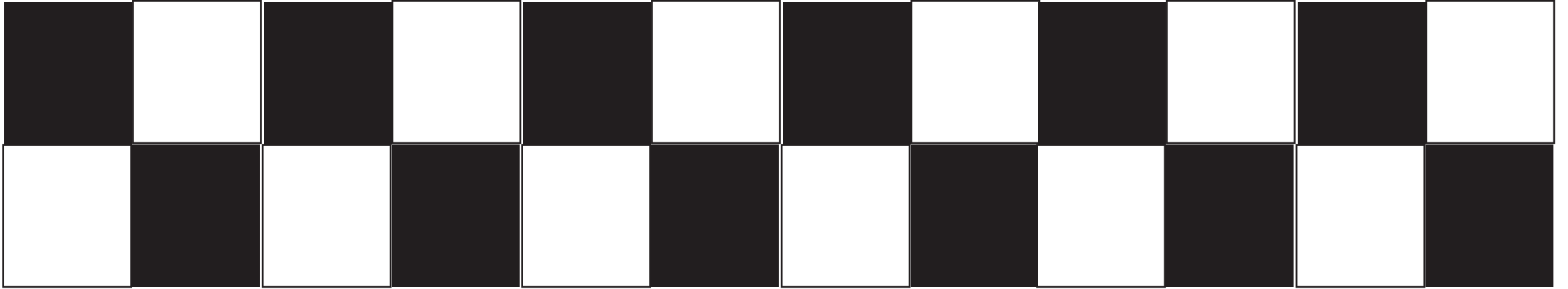
**Farm Dinner Season**

VISIT OUR WEBSITE FOR CURRENT DINNER DATES & TICKET PURCHASING

- "Salt of the Earth" Art Show (May 7th)
- Willow Spring Ranch (August 12)
- Wells Fargo Ft. Montana Rose (June 20)
- Willie's Distillery (August 23rd)
- Sabo Ranch (July 2nd)
- Gallatin Growns (August 26)
- Cooper Hereford Ranch (July 26)
- Bozeman Brewing Co (Sept 20th)
- Gallatin Valley Botanical (August 4)
- AND MORE...

WWW.SEASONALMONTANA.COM f t i  
melissa@seasonalmontana.com • 303.319.4354





# Take it to the limit

## Ennis man explores his passion for racing

Caitlin Avey/The Madisonian  
**Tom Leeming and his four-legged companion, Bojangles,** stand with his two Alfa racecars. The cars' numbers are 51 and 75 - the year Leeming was born (51) and the year he married his wife (75).



Caitlin Avey  
THE MADISONIAN  
newsmadisoniannews.com

Picture a racetrack; two to three miles of pure asphalt, 25 cars and 120 mph. Your loved one is in the crowd, cheering you on. Safety personnel are standing by, ready for even the slightest mishap. The checkered flag is signaling you to start. Are you nervous?

For some, racing is a rush, a burst of adrenaline, or even nerve wracking. But that is not the case for Tom Leeming.

"I don't get overly excited - I'm perfectly calm," said Leeming. "You're concentrating so hard and completely focused. There's no distractions - you just blank everything out."

Leeming has been involved in the world of racing since the 70s when he worked for several different race teams, including Bob Sharp Motors. He built his first stock car in 1973.

After high school, he went on to become a mechanic and eventually started "tagging along" to races and working on racecars.

"I've always liked working on cars," Leeming said. "There's always something to do to improve it, especially with racecars."

Currently, he owns four cars: two racecars, a 1973 Alfa GTV and a 1969 Alfa Berlina, an Alfa Romeo 4C and a Honda s2000 that his wife, Lynn, races. He also has eight motorcycles ranging from dual

sport to BMW touring bikes to an observed trials bike, which does not include a seat.

"You don't sit. You stand," Leeming said.

Most of the vehicles in "the stable" as he says, have been completely restored by Leeming, and every winter, he tears down and rebuilds.

"I completely restored the Berlina - it was barely running when I bought it," said Leeming. "It's more of a gentleman's racecar whereas the GTV is a fully prepared racecar."

After he built his first stock car, Leeming got involved in the actual race itself and raced in 1976 and 1977.

"I couldn't afford car racing at first, so I got into

motorcycle racing," he said.

Although he enjoys riding motorcycles and participating in road racing events and hill climbs, car racing has become his love. Leeming got back into car racing 20 years ago, shortly after he bought and restored the GTV.

Last year, Leeming became interested in vintage road racing and attended a three-day high-performance driving school in Portland, Ore., to obtain the correct set of skills and licensing. Now, he races with three different clubs: Sovren, Vara and national SRVA.

"Vintage is really fun," said Leeming. "All the cars are pre-1974 and all different styles, types, and class. It's very competitive."

The competitiveness isn't the only thing that drives Leeming when it comes to racing.

"It's the great camaraderie between the racers that's most fun," he said. "Everyone is willing to help each other out - we all have the same purpose. And it's an interesting mix of people in their 50s, 60s and 70s."

Leeming has a 10-race season this year and he is already halfway through. He will have traveled to California, Nevada and Oregon by the season's end, and just returned from a race in Spokane, Wash., this weekend. Most of the races are half hour in length and are based on time rather than laps.

"It's a two to three

mile road course on a closed, dedicated racetrack, with usually nine to 14 corners," said Leeming. "So there's always a learning curve with each track."

A typical race weekend includes one day of traveling, a test and tune day to get oriented with your car and the track, followed by the actual race event, which is usually two days in length.

For Leeming, the greatest appeal is not only getting to drive fast but constantly bettering yourself.

"It's a whole new set of skills," he said. "You're racing the car to its limits as well as your limit of skill. Take it to the limit."

Caitlin Avey/The Madisonian  
Below: Leeming's exotico racecar, an Alfa Romeo 4C.

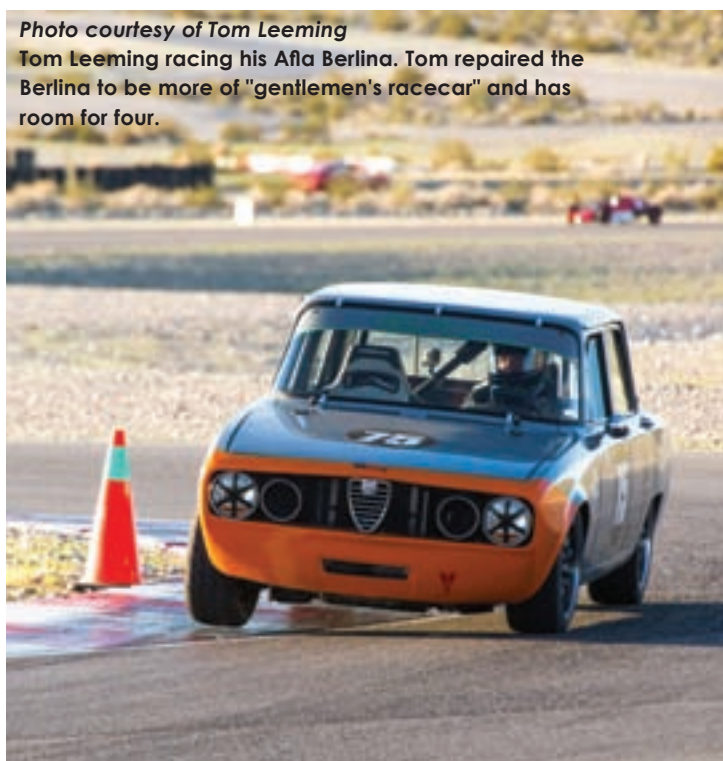
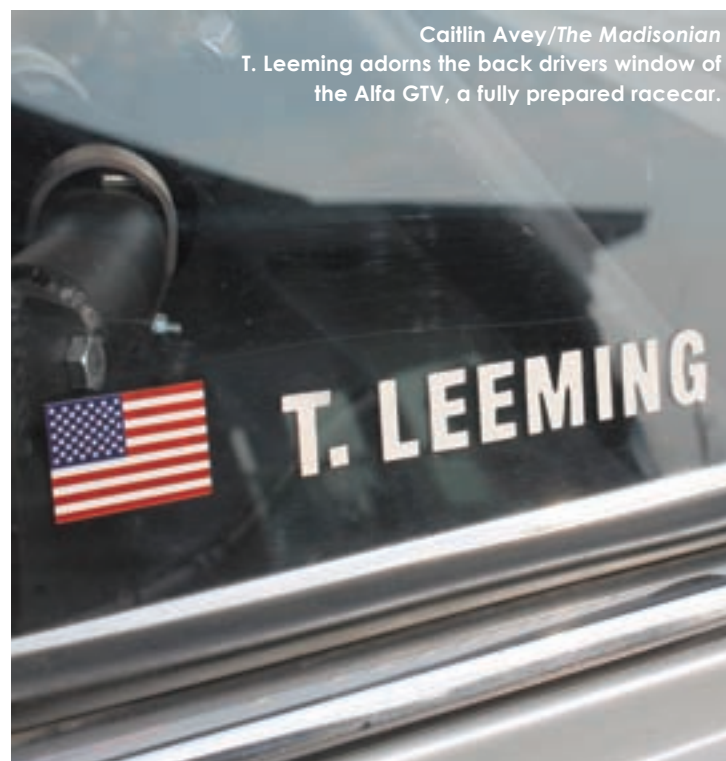


Photo courtesy of Tom Leeming  
Tom Leeming racing his Alfa Berlina. Tom repaired the Berlina to be more of "gentlemen's racecar" and has room for four.



Caitlin Avey/The Madisonian  
T. Leeming adorns the back drivers window of the Alfa GTV, a fully prepared racecar.





# HEALTH & WELLNESS

## Stay safe during National Food Safety Education Month

Submitted by StatePoint

Food poisoning, an illness caused by bacteria or other pathogens in food, causes an estimated 48 million illnesses (representing one out of six Americans), 128,000 hospitalizations and 3,000 deaths annually in the U.S., according to Centers for Disease Control and Prevention statistics. With proper food safety practices you can lower your risk substantially, say experts.

“Whether whipping up dinner from scratch or simply reheating leftovers, there are important food safety practices you must remember,” said registered dietitian nutritionist and Academy of Nutrition and Dietetics spokesperson Joan Salge Blake.

Salge Blake and the experts at the Academy are encouraging everyone to learn four simple steps for food safety during National Food Safety Education Month this September.

### Wash

Harmful bacteria can survive in many places around your kitchen and be spread to food and family, without correct precautions.

Wash hands for at least 20 seconds in warm, soapy water. Scrub the backs of your hands, between fingers and under your nails. Proper hand washing may eliminate nearly half of all cases of food poisoning and significantly reduce the spread of the common cold and flu.

Use hot, soapy water to wash surfaces and utensils after each use, including appliances, countertops and cutting boards. Do not forget dishcloths and towels. Wash them frequently on the hot cycle of your washing machine. Disinfect sponges in a chlorine bleach solution and replace worn sponges frequently.

### Separate

Cross-contamination occurs when juices or bacteria from raw meat, poultry, seafood and eggs touch cooked or ready-to-eat foods. Keep these items separate from other foods in your shopping cart, grocery bags and refrigerator. Place them in plastic bags to prevent juices from leaking, and on the refrigerator's bottom shelf, so their juices do not drip on other foods.

As you cook, keep raw meats, poultry, seafood and eggs separate from ready-to-eat foods by using different cutting boards, plates and utensils.

### Cook

“Many people think they can tell when food is done simply by checking its color

and texture, but one out of every four hamburgers turn brown before reaching a safe temperature,” says Salge Blake.

A food thermometer is the only reliable way to ensure food has been cooked to a high enough internal temperature to kill harmful bacteria. Internal cooking temperatures vary from food to food. **Refrigerate**

Cooling foods promptly and properly slows the growth of harmful bacteria and helps prevent food poisoning.

Refrigerate perishable foods within two hours, or one hour if the temperature is above 90 degrees Fahrenheit. Use a refrigerator thermometer to ensure the refrigerator is set at 40 degrees Fahrenheit or below and the freezer at zero

degrees Fahrenheit or below.

Tasting just a tiny bit of contaminated food can cause serious illness, so toss all expired foods. If you are unsure, remember: when it doubt, throw it out.

Food poisoning is a serious concern that can often be avoided. Use National Food Safety Education Month as an opportunity to learn more.



## How to sweeten celebrations with s'mores all year long

Submitted by StatePoint

Whether you are hosting a big party for friends or it is a movie night in with the family, you can sweeten the fun with an iconic treat that can be enjoyed any time of year.

Consider going beyond the classic s'mores recipe that family and friends have been enjoying for decades.

### Be the life of the party

Hosting a party? S'mores pops bring to life all of the elements of the traditional recipe in a newly imagined treat.

- Things you will need:
- Two milk chocolate bars
  - 1 tsp. shortening
  - 12 marshmallows
  - 1/4 cup graham cracker crumbs
  - 12 lollipop sticks

- Parchment paper
- How to make:
- Line cookie sheet or tray with parchment paper. Remove wrappers from chocolate bars; break into pieces.
  - Place chocolate and shortening in small microwave-safe bowl. Microwave for one minute; stir. If necessary, microwave for an additional 10 seconds at a time, stirring after each heating, until chocolate is melted and mixture is smooth when stirred.
  - Dip about 1/2 of each marshmallow into melted chocolate; shake off excess chocolate. Immediately sprinkle chocolate portion with graham cracker crumbs or dip for heavier coating. Place uncoated side on prepared sheet. Push lollipop stick through top of chocolate about



halfway into marshmallow. Repeat procedure with remaining marshmallows.

• Refrigerate for about five minutes or until firm. Store in cool, dry place. Makes 12 treats.

### Curl up on the couch

Make movie night complete with a s'mores sundae or sweet s'mores snack mix. Packed with flavors inspired by the classic recipe, this snack will have everyone saying, “Gimme some more!”

- Things you will need:
- Three milk chocolate bars
  - Four full-size graham cracker sheets
  - 2 tbsp. butter or margarine
  - 2 tsp. sugar
  - 1 tsp. ground cinnamon
  - 1 cup cinnamon graham cereal
  - 1 cup miniature marshmallows
  - 1/2 cup peanuts
- How to make:
- Heat oven to 350 degrees Fahrenheit. Line cookie sheet

with foil. Lightly spray foil with vegetable cooking spray. Break graham crackers into 1/2 to 1 inch pieces; spread on prepared cookie sheet.

• Place butter in small microwave-safe bowl. Heat in microwave for 30 seconds. Add sugar and cinnamon; stir until butter is melted and mixture is blended. Drizzle over graham cracker pieces.

• Bake in oven for 10 minutes; gently stir or turn over pieces. Bake for additional 10 minutes; remove from oven. Cool completely on cookie sheet.

• Remove wrappers from chocolate; break into sections. Toss graham cracker pieces with chocolate bar pieces, cinnamon graham cereal, marshmallows and peanuts. Store in cool, dry place.

To add a touch of sweetness to celebrations, enjoy this treat the traditional way or put a fun spin on an old favorite.

**Ruby Valley Hospital Physical Therapy Team**  
 Customized treatment plans to restore functional mobility specific to your lifestyle

Neck Pain/Headaches    Muscle & Joint Pain  
 Back Pain    Sports Injury  
 Falls/Decreased Balance  
 Post-Surgical Rehabilitation  
 Self-Care/Home Safety

Jamy Kraai, MPT    Jessi Muniz, DPT  
 Jana Butler, PT    Cindy Crismore, Office Manager

Appointments available Monday - Friday, 8am - 5pm  
 Call (406) 842-5081 for more information  
 www.RubyValleyHospital.com  
 The Ruby Valley Hospital is an equal opportunity provider

Dr. Sarah E. Hill OD, F.A.A.O., F.C.O.V.D.    Dr. Sarah G. Kirkpatrick OD, F.A.A.O.

**20|Twenty Eyecare Services Include:**  
 Vision & Eye Health Exams  
 Children's Vision  
 Latest Technology for Treatment of Eye Disease  
 Contact Lenses  
 Vision Therapy

Come see our collection of over 20 designer frame brands.

**20 | TWENTY**  
 522-8888  
 280 W Kagy Blvd, Suite B, Bozeman, MT.  
 www.20TwentyMT.com  
 Most insurances accepted including VSP & EyeMed

**EMILY HAYES,**  
 LICENSED MASSAGE THERAPIST

now at  
 WHISPERING WILLOW  
 SKINCARE & BODY BOUTIQUE

230 E. Main St., Ennis MT  
 406-600-0583

www.emilyhayes.massagetherapy.com

**MAC'S CHC PHARMACY**

(406) 842-7434  
 317 Madison St  
 Sheridan, MT

Monday - Friday  
 9 am to 5:30 pm

Mac's CHC Pharmacy  
 Empowering your whole health journey

protect his smile and your investment.

**SAGER Dental Group**

Four Corners West of Bozeman  
 406.586.9871 sagerdentalgroup.com

AUTHORIZED PROVIDER  
 UA PERFORMANCE MOUTHWEAR™  
 \* ONLY AUTHORIZED \* PROVIDER in BOZEMAN

**AARP® Auto Insurance Program from The Hartford**

SEE HOW MUCH YOU COULD SAVE!

Jack W. Daugherty Insurance and Financial Services, LLC  
 201 E. Main St., Ennis, 842-3800 Sheridan, 682-4002  
 www.jackdaughertyinsurance.com





# COLUMNS



## This, OUR VALLEY:

By Reverend Keith Axberg



### Zen in the Valley

*You (O Lord) are justified when you speak and upright in your judgment. Psalm 51:5*

The deer have been mostly absent from our yard this summer. During the winter we see them at least three times a day; they seem to come grazing through for breakfast, lunch and dinner. In early summer we don't see them nearly as often as they must have better places to go, have their babies and eat. Now that summer is two-thirds over and the fawns are a bit larger and stronger, the deer are back to their old grazing habits.

Our back yard seems to serve three primary purposes for the local deer-herd. First, they enjoy eating the grass, which must be quite satisfying to them, as we do everything we can to keep it lush and green.

They use our lawn upon which to bed down for their afternoon siestas – again, because they must find it soft, cool and comfortable in the mid-day heat of summer. And why not? We keep it well watered, so the ground is soft,

and I set the mower blades a bit higher than I prefer, because it is better for the grass not to be chopped as low as I would do it if I wanted it to look well manicured.

Finally, they use our lawn as their own personal litter box, which is unsightly (and seems quite unsanitary). I'm not overly fond of having to clean up after them, but it is what it is, so we each do our part and life goes on.

Meanwhile, I am happy to report that my Valley Girl tomatoes are doing better than they were the last time I spoke of them. A month or so ago I had written of my disappointment with her woeful lack of production of tomatoes. At that time there had only been three tomatoes that had bothered to show themselves to this novice gardener. Today there are at least eight, and a few are beginning to show signs of some color other than green.

Of course, they will no doubt ripen while I am away on vacation. Fortunately, I have asked a couple to babysit Valley Girl for us,

so they will be free to take advantage of these locally grown and harvested delights. I am hoping production will continue past our return, at which time I shall hope to provide you with a full and complete update on their health status and taste.

On another note, it seems traffic has been much heavier than in my previous summers here in the Madison and Ruby valleys (and points in between). I am wondering if our fisherman triangle in Ennis shouldn't be converted into a traffic circle.

I know people complain about such circles as being confusing, but that is simply because we don't have enough of them in this area for drivers to "get used to" them. They are really much more efficient at enhancing traffic flow than intersections with traffic signals (and does anyone really want signal-lights in Ennis at the Y?).

If you have been reading this column thus far, you're probably wondering what deer, tomatoes and traffic lights have to do with life and faith – the raison d'être of This, Our Valley.

The answer is a simple: Nothing!

While I generally try to have a reason or focus behind each column I write, every now and then I just like to go with the flow, and see where the flow takes me. I am not very Zenful, and yet every now and then a bit of the Zen universe will touch me – or tackle me – and what can I do but live in the now and confess that not everything that happens has a purpose upon which to propound.

In some ways, life for the sake of life is its own purpose. There is no higher calling than to live in the here and now, for there really is no other time. There is no future, there is only now. There is no past, just our memories, holy cow!

The point is: the deer, tomatoes and traffic do their thing, and there is nothing intrinsically moral or immoral – good or bad – evil or holy about any of it. They simply "are" – and I enjoy keeping an eye on them in this, our valley.

*Keith Axberg writes on matters concerning life and faith. He can be reached at kfaxberg@gmail.com.*

## NATURAL Resource News

Eric Johnston  
RESEARCH TECHNICIAN, MONTANA STATE UNIVERSITY

### Golden Eagles

The majestic golden eagle, whose Latin name is *Aquila chrysaetos*, is one of the best-known birds of prey in the Northern Hemisphere. It is also the most widely distributed species of eagle. Golden eagles range all over the world, from North America to Africa, Europe and Asia.

Golden eagles can be up to 3 feet tall with a 7 foot wingspan. They live in high mountains down to prairie ranges, usually preferring cliffs for nesting but will use trees when necessary. The golden eagles that utilize Montana range can migrate

from Canada and Alaska to spend their winters living the easy life in Montana. Some can also be year round resident birds that may spend most of their time in one drainage area.

Golden eagles are dark brown, with lighter golden-brown plumage on their napes. Immature golden eagles typically have white on the tail and often have white markings on the wings. Golden eagles and juvenile bald eagles can be mistaken for each other, as they both display brown feathers, but the bald eagle has a much larger beak, and I

would recommend looking up plumage pictures or drawings for the differences in appearance.

They eat a variety of prey from smaller, lighter animals like rabbits and ground squirrels, but have been observed killing antelope, bighorn sheep, mountain goats and even bear cubs. They can see a rabbit from up to a mile away, and have been clocked at up to 200 mph.

Golden eagles do not have a lot of natural predators, but certainly have a hard time with humans. 70 percent of eagle mortalities come from human based causes. From electrical lines, wind farms, lead poisoning, shootings and inadvertent poisoning through eating poisoned rodents. Human impact is a dilemma. Essentially every eagle has lead poisoning, and as age gets higher so do toxic levels generally. Most eagles have between .3 and .7 parts per million lead content in their blood, and it begins to become lethal at .9 or so. The poisoning is believed to come from lead rounds and eagles eating the remains of hunter kills, when the lead round shatters into pieces, or

from shooting ground squirrels.

We have learned about the lead poisoning and so much more about golden eagles by capturing birds in Montana for research samples and area use with a remote net launcher, and often using a lure bird.

Some interesting info on local birds captured for research: one Sheridan resident during a six month time period has had a range of 45 square km (approximately 17 square miles), while a resident eagle in the Bridger Mountains near Bozeman during the same period has had a range of 6,500 square km (approximately 2,510 square miles!) meaning the Sheridan bird finds all it needs in a small zone. So good job on the great habitat Ruby Valley ranchers and residents!

In closing, please think of the ammunition you use, no matter what species you are hunting for (I hunt and use copper) and how you decide to remove pest rodents ... it affects everything. All threats are being worked on and reviewed to help lessen the impact, and a single person can help.

**\*\* Editor's note: Long-time columnist Gail Banks is no longer writing for The Madisonian. "After 29 years of writing it, Around the Wood Stove has come to an end. I thought I'd write until I was really old, or couldn't remember anymore. But times and minds change. There is a reason it is only a local call to heaven from Madison County. God bless you all and my deepest sincere thank you for your support. – Gail" We at The Madisonian want to thank Gail for her many years of contributions. This week, we're excited to introduce you to Charlie Rossier, a Sheridan man who has stories of the Ruby Valley community that are (almost!) completely believable. Read on to hear about Charlie's struggles with a miniature horse in his inaugural column. Charlie's columns will appear once a month on this page of the paper.**

## Charlie's Angel, part one

By Charlie Rossier

My youngest son Pete had a classmate who was an aspiring scholar, but was part of a one-parent family minus the father. This can sometimes be a problem if the parent doesn't

have the ability to reason with what could be referred to as a "dumb act" by the child. Both the student and parent had very

loving hearts and managed to adopt a miniature horse from some unscrupulous scoundrel, who has probably skipped the country for a foreign land where he can't be extradited for this act of depravity. A miniature horse is a small version of the animal we all love and know: a horse, which usually stands 4 – 7 feet tall and weighs anywhere from 1,000 to 2,500 pounds when fully grown. A miniature horse, on the other hand, just weighs 600 – 700 pounds and stands 3 feet tall. The animal attracts flying insects due to its constant need to crap anywhere and everywhere and is normally seen in the company of a cloud of flies. Another point I'd like to make, is that this horse had never been ridden and was barely halter broken, and is of the idea that when a halter is applied to it, it's a green light to take flight at all possible speed to wherever the horse feels the need to be. Also, this demon animal was appropriately named Angel.

The mother of the girl rented a one bedroom apartment only

a couple of houses away from our house, which had a yard that was 15 by 20 feet at the largest and had a fence that couldn't possibly hold a pair of geese at best. The said horse was then boarded in this small cubical, with no other means of feed besides the grass of the lawn. My son requested that I help, so I contacted my cousin, who owns a piece of pasture property adjacent to ours in the back of our houses. The acreage was originally used to house livestock in times past, and we thought that grazing it would help keep the weeds and foliage down.

I approached my cousin with the idea of letting the young lady board her horse on the property and he obliged my request. We OK'ed this with the understanding that the horse owners would be moving the horse to a more permanent residence in Anaconda in the upcoming weeks. We fenced the property with an electric fence, which takes very little time to do. The property is adjacent to a small stream, which borders the property. I had built a metal building on the property and a pile of topsoil still remained on the spot. The mound of dirt was about 3 feet tall and had been overgrown with some brush and ground cover. During the construction of the fence, the horse became a Houdini and escaped several times from the little yard and ran gleefully around town, disrupting the normal flow of traffic on the city streets. We helped round up the critter a couple of times, and learned the hard way that

a miniature horse can do an incredible amount of damage anywhere it decides to roam. It can run at 30 miles per hour and knock over big obstacles like they were butter. (I'm talking about the human barrier kind ... and some really large ones.)

I saw two 240 pound linemen get dragged a hundred yards in the blink of an eye. Needless to say it was wonderful when we corralled the little #S\*! and got it back in to solitaire. My cousin and I quickly finished our fence and let the horse owner know they were cordially invited to move into the field that we had provided for them. This was with the understanding that they would have the horse moved in the next couple of weeks. The horse was moved and things seemed to go well for the immediate time being.

Later on in the summer, after the horse had eaten all the pasture grass and had the yard mowed down to almost nothing, a noisy, lonely neighbor decided that we must be abusing the little horse and reported us to the local ASPCA and also to the sheriff's office. An officer was dispatched to check on the complaint – he examined the situation and gave the horse a clean bill of health to the best of his ability. As for the ASPCA, our local chapter consisted of one retired, bored person, who took it upon herself to become the activist to the cause of animal rights in our area. She adopted all homeless critters and could be a tyrant when she thought an animal was being abused. Once she got something in her craw it

was next to impossible to reason with her. One afternoon, she dropped in unannounced and lit into my cousin and me about our lack of caring toward this wayward horse. We explained that we were only allowing the horse to stay on our property while the owners made other arrangements to move to better accommodations where the horse would be cared for properly.

She demanded that a vet be hired look over the horse and make sure it wasn't malnourished, which we agreed to so she called the local vet. The vet did a complete physical and pronounced the horse healthy. (And presented us with a rather large bill for her services.) We had been trying to get a hold of the owners since the visit and also to present the vet's bill to them. (We ended up eating the bill ourselves as another bonus of our good intentions.) They had temporarily left town and had left no forwarding address. My cousin and I strategized a few minutes and decided we would purchase some hay, or else we felt we would be persecuted forever. I talked to some rancher friends and purchased the hay. We bought a ton of year old hay at a reduced price – a ton was the smallest amount we could purchase. The hay was from last year's cutting and showed signs of sitting on the ground for a period of time. It was still good horse hay. I moved it to the property and stacked it within easy access of the horse and thought my troubles were over...

*Check back next month to hear how the tale pans out!*

## Commodity Insite: News & Views

by Jerry Welch

When even Cargill Inc., the world's largest grain trader, decides to liquidate its own hedge fund, that's a sign that commodity speculators are in trouble.

Hedge funds focused on raw materials lost money on average in the first half, the Newedge Commodity Trading Index shows. Diminishing investor demand spurred Cargill's Black River Asset Management unit to shut its commodities fund last month. Others enduring redemptions include Armajaro Asset Management LLP, which closed one of its funds, Carlyle Group LP's Vermillion Asset Management and Krom River Trading AG.

While hedge funds are designed to make money in both bull and bear markets, managers have a bias toward wagering on rising prices and

that has left them vulnerable in this year's slump, according to Donald Steinbrugge, managing partner of Agercroft Partners LLC. The Bloomberg Commodity Index tumbled 29 percent in the past year and 18 of its 22 components are in a bear market.

U.S. inflation is only temporarily "very low" due in part to commodity prices, while the U.S. economy has nearly achieved full employment, Federal Reserve Vice Chairman Stanley Fischer said on Monday. "A large part of the current inflation is temporary. It has to do with the decline in the price of oil; it has to do with the decline in the price of raw materials," he said on Bloomberg TV," from the Wall Street Journal, Aug. 11, 2015.

China devalued its currency on Tuesday after a run of poor economic data, a move it billed

as a free-market reform but which some suspect could be the beginning of a longer-term slide in the exchange rate. It was the biggest one-day fall since a massive devaluation in 1994 when China aligned its official and market rates," from Reuters News, Aug. 11, 2015.

"The fact China devalued their currency simply means they have less buying power than they had 24 hours ago. Their currency is worth less and it buys less. By any measure, that is another bearish red flag of warning for those bullish commodities," from Jerry Welch, Commodity Insite.

"China's currency devaluation is the latest threat to many Western brands as Chinese consumers continue to push back on luxury spending. Already reeling from a Chinese government crackdown on

conspicuous spending and a slowing economy there, Western brands face a new obstacle to growth in the second largest luxury market in the world to contend with: a surprise 2 percent devaluation of China's yuan on Tuesday, its biggest one-day move in a decade," from Fortune, Aug. 12, 2015.

"A rare, 'death cross' appeared Tuesday in the chart of the Dow Jones Industrial Average, suggesting the stock market may have already begun a new long-term downtrend. Although chart watchers have seen the bearish technical pattern coming for some time, it can still send a chill down bulls' spines when it is finally confirmed," from Market Watch, Aug. 12, 2015.

"In my view, with the commodity markets at a 13 year low and likely to head

lower before higher, if there is money to be made (or saved!) in the near term it will be on the short side, the selling side of U.S. equities. Soon it will dawn on the trade that equities are vastly over crowded and market participants complacent. Equites are not immune from the worldwide slowdown that is gaining momentum. Wall Street and the stock market are Disneyland at times and woefully disconnected from Main Street which is best represented by the commodity markets," from Jerry Welch, Commodity Insite.

"U.S. crude settled at a six-year low on Tuesday after number two consumer China devalued its currency, raising questions about its demand for crude, while a new projection showed non-OPEC producers were more resilient than expected to keeping output

high amid low prices. China is another factor for the drop in oil and commodity prices, with its historically low growth forecast of around 7 percent in 2015," from CNBC, Aug. 12, 2015.

"There have been some dramatic devaluations in history – think of sterling in 1967 and 1992, or Argentina in 2001/2. When currencies decline, they do so in a big way. China's devaluation of the yuan today is less than two percent but it is also being treated as a major story. Robert Peston of the BBC says it is more significant than either the Greek crisis or if the Federal Reserve raised interest rates. The combination of falling commodity prices and weaker emerging markets is certainly a worry," from The Economist, Aug. 11, 2015.



# COMICS & PUZZLES

Calvin and Hobbes by Bill Waterson



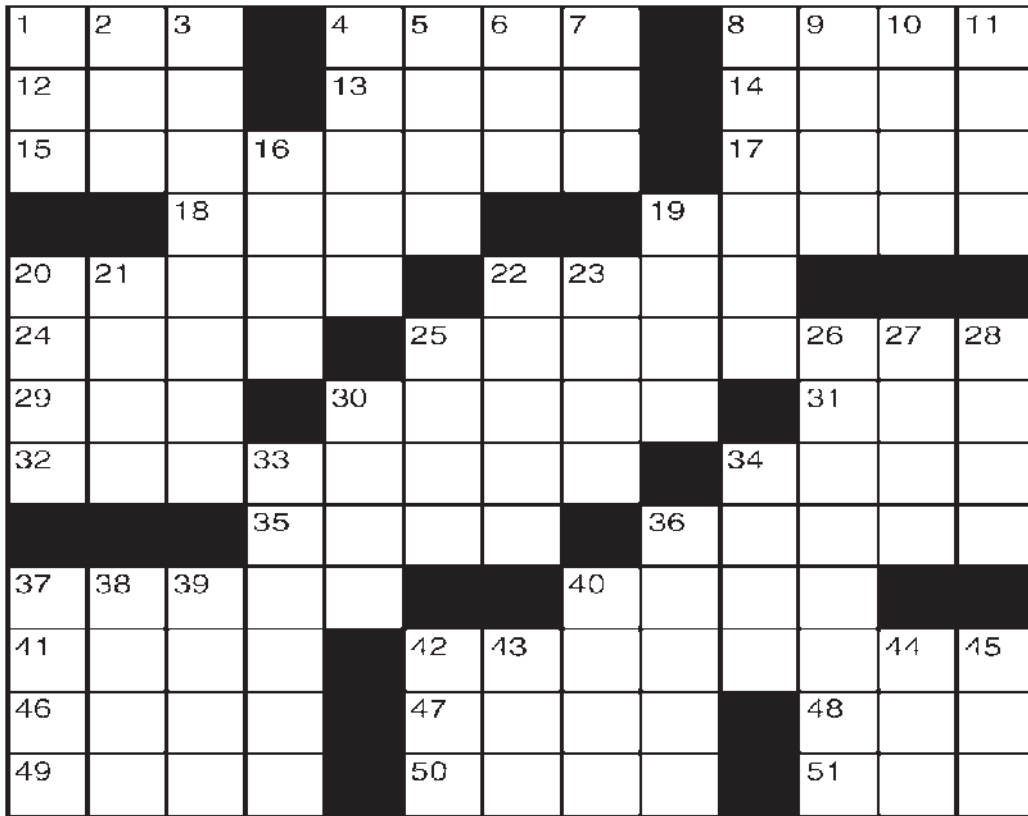
Garfield by Jim Davis



## King Crossword

**ACROSS**

- 1 CNBC's Cramer
- 4 Oxen's burden
- 8 Links warning
- 12 Oklahoma city
- 13 State with certainty
- 14 Egyptian wading bird
- 15 Observing
- 17 Goes up and down
- 18 LummoX
- 19 Not just plump
- 20 "Yippee!"
- 22 Classic Welles role
- 24 Settled down
- 25 Strong
- 29 Director Howard
- 30 Customs
- 31 Compass dir.
- 32 Brought into disrepute
- 34 Elevator name
- 35 "Born Free" lioness
- 36 Treaties
- 37 Boston Marathon month
- 40 Eve's third son
- 41 Reddish mount
- 42 Nolan Ryan's job
- 46 Capri, e.g.



- 47 Neighborhood
  - 48 TV's "Science Guy" Bill
  - 49 Landlord's paper
  - 50 Rhett's last word
  - 51 Wrigley product
- DOWN**
- 1 Mandible
  - 2 Mrs. McKinley
  - 3 In harmony
  - 4 "Gulliver's Travels" brute
  - 5 "Metamorphoses" writer
  - 6 Barbie's
  - 7 Work unit
  - 8 Untruthful one
  - 9 Reed instrument
  - 10 Cage components
  - 11 Being, to Brutus
  - 16 Coagulate
  - 19 Individuals
  - 20 Hospital section
  - 21 Lotion additive
  - 22 "M\*A\*S\*H" locale
  - 23 Dumbstruck
  - 25 Spacecraft compartments
  - 26 Attractive
  - 27 Monad
  - 28 Not so much
  - 30 Shopping center
  - 33 — in (restricted)
  - 34 Inauguration recitation
  - 36 Pie nut
  - 37 Sahara-like
  - 38 Sit for a photo
  - 39 Bronchial sound
  - 40 Goblet feature
  - 42 Tablet
  - 43 Glass of NPR
  - 44 Big Apple sch.
  - 45 Jewel

© 2015 King Features Synd., Inc.

## Just a Pinch

Sharing Hometown Recipes, Cooking Tips and Coupons

By Janet Tharpe

### Basic Ingredients Shine in This Old-Fashioned Banana Cake

"This recipe is over 100 years old!"



It's hard to imagine not falling passionately in love with Audra LeNormand's moist, delicious Banana Cake! All of the flavors blend perfectly... with just the right punch of banana. Depending on how large your bananas are, you may need to adjust the quantity. But to me, the more bananas the better!



Audra LeNormand  
Liberty, TX  
(pop. 8,397)

See step-by-step photos of Audra's recipe plus thousands more from home cooks nationwide at: [www.justapinch.com/familybananacake](http://www.justapinch.com/familybananacake) You'll also find a meal planner, coupons and chances to win! Enjoy and remember, use "just a pinch"...

- Janet

### Banana Cake

**What You Need**

**CAKE**

- 2 sticks butter
- 2 c sugar
- 4 eggs
- 1 c milk
- 3 c flour
- 3 tsp baking powder
- 1 tsp Mexican vanilla

**SYRUP**

- 2 1/2 c sugar
- 1 c water
- 1 lemon juiced
- 12 bananas sliced

**Directions**

- Preheat oven to 350 F.
- Cream butter and sugar. Add eggs; mix well. Add milk; mix well.

- Add flour and baking powder; mix well. Finally, add Mexican vanilla; mix well.
- Grease and flour two 9-inch round cake pans.
- Bake for 30 to 35 minutes. Cool on wire racks.
- While cake is baking, combine sugar and water in a medium saucepan.
- Heat until syrupy, then add lemon; allow to cool.
- Place one cake on a cake platter and prick holes in it with a fork.
- Place half of the sliced bananas on the 1st layer and pour 1/2 of syrup over the bananas and cake.
- Place 2nd cake layer on top of the 1st. Prick holes, layer bananas, then use the last of the syrup.
- Store leftovers in the refrigerator.

Submitted by: Audra LeNormand, Liberty, TX (pop. 8,397)

[www.justapinch.com/familybananacake](http://www.justapinch.com/familybananacake)

Brought to you by American Hometown Media

**The Madisonian**  
682-7755

## Get the Good News!

All puzzle answers on B7

**NOVICH INSURANCE AGENCY**  
Twin Bridges • Phone 684-5701

*For All Your Insurance Needs*

Serving The Ruby Valley For Over 40 Years

"Stick With The Best!"

**BOWMAN APPLIANCE SERVICE**

1035 S. Main St. • Butte, Montana 59701  
(406) 723-6797

We Work On All Major Brands.

In Ennis, Sheridan and Twin Bridges and surrounding areas  
**EVERY WEDNESDAY**

**SKYLINE SURVEYING INC.**

MARGARET STECKER, PLS • (406) 581-0144  
BOX 321, McALLISTER, MT 59740

\* Property Corner Location \* Boundary Surveys \* Boundary Realignments  
\* Family Transfer Surveys \* Subdivisions \* Construction Layouts  
\* Elevation Certificates \* Aerial Mapping \* Topographic Surveys

**COMPUTER+HELP**

- Networking
- Troubleshooting
- Repair

Peter Rogstad  
406-682-5403 • [enniscowboy@gmail.com](mailto:enniscowboy@gmail.com)

**BENEDICT BUILDERS LLC**

**BUILDING CUSTOM HOMES & COMMERCIAL BUILDINGS SINCE 1974 MEETING ALL EXCAVATION NEEDS TOO!**

406.843.5330  
PO Box 294 VIRGINIA CITY, MT 59755

JOE VELAND

**406.682.3999**

SERVICE WORK  
NEW CONSTRUCTION  
REMODELS

PO BOX 987  
ENNIS, MT 59729



# the Madison County MARKETPLACE

View classifieds online at [www.madisoniannews.com/classifieds](http://www.madisoniannews.com/classifieds).

## HELP WANTED

Alley Bistro is looking for part time kitchen and front of house position. Call John at 209-4031 or stop by for application.  
38-tfc-b



### Become a Foster Parent for Youth Dynamics

Please join Youth Dynamics in making a difference for Montana kids! Youth Dynamics is a private, non-profit organization that provides therapeutic foster care and respite care to children in need of a safe and loving home. Our belief is that every child deserves a family. If you are interested in becoming a Therapeutic Foster Parent, YDI will provide you with complete training and support. [www.youthdynamics.org](http://www.youthdynamics.org) or call Christina at (406) 946-4294.  
35-tfc-b

Help Wanted. Full time general maintenance at Antler Designs. Monday-Friday, 8-5 p.m. Benefits. Apply at 333 W. Main St, Ennis or call 682-7153.  
27-tfc-b

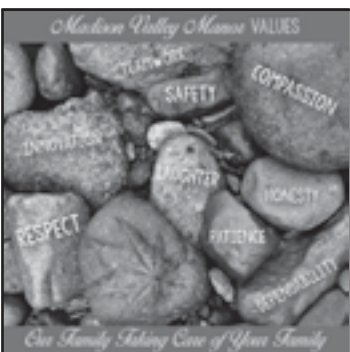
Admin/asst. bookkeeper needed. Ennis-Bozeman travel required. Part time. Send resume by email only with salary requirements to [dbsmontana@gmail.com](mailto:dbsmontana@gmail.com)  
40-4-b

McAllister Inn is hiring servers, dishwashers, prep cook and bus person. Please call 682-5000 or apply in person from 2- 4 at McAllister Inn.  
40-tfc-b

Upcountry Earthworks is looking for operators, truck drivers and someone with mechanic and welding experience. Call 682-7103.  
40-tfc-b



Madison Valley Manor is looking for a per diem LPN or RN. Pay commensurate with experience. This is a great opportunity to work in a personal healthcare setting. If you are interested in a rewarding career in healthcare, Madison Valley Manor is the place. Please contact Christine Canterbury, DON at 682-7271 for more information. EOE  
36-tfc-b



The Madison Valley Manor is hiring for a full-time Housekeeper position. This is a great opportunity to work in a personal healthcare setting.  
· Excellent pay  
· Government retirement.  
· Benefits including life and health insurance.

If you are interested in a rewarding career, Madison Valley Manor is the place. Deadline for applications would be 5 pm, Monday August 24  
Please contact Tom Burt, Maintenance Supervisor at 682-7271 for more information. EOE  
43-tfc-b

Seeking home healthcare provider for a single older female with limited mobility and a speech impairment. Duties include household upkeep, cooking, shopping, and driving client as needed. Variable hours with flexible schedule, part time, wage doe, call Nick Efta at 406-581-9990 for interest.  
41-3-b

Ennis Community Children's School, a non-profit, licensed childcare center and preschool is hiring teachers! PT and FT positions available for Director, Primary Care Giver, and Aides. Applicants must be reliable, friendly, and fun! Wage is \$14.00/hr plus incentives for Director and DOE for PCG/aide. Contact boardofdirectors.eccs@gmail.com or stop in to complete an application.  
43-1-b

The Madison County Solid Waste Department will be accepting applications until filled for one part time, permanent Container Site and Landfill Operator position in the Ennis area. This position starts at \$13.71 per hour with approximately 30-40 hours per week during the summer months and the possibility of 2 to 3 days a week for the remainder of the year. Typical summer time work days will be Friday through Tuesday, starting immediately. Primary duties will include compactor operation, sorting solid waste, operating heavy equipment, bailing cardboard and plastic, assisting the public when disposing of solid waste, and maintaining a clean and orderly site. A CDL is preferred but not required. Interested candidates may request a job description and employment application by contacting the Madison County Sanitarian's Office at 406-843-4275, via e-mail at [mcsani@madison.mt.gov](mailto:mcsani@madison.mt.gov), or visit our website at [www.madison.mt.gov](http://www.madison.mt.gov). Madison County is an equal opportunity employer.  
43-2-b

-If you have a passion for long term care -If you want your efforts as a nurse to really make a difference -If you want to be part of a team willing to think (and work) outside the box I would like to talk to you! Right now we have a need for PRN nurses (RN or LPN - new grads welcome). I expect full time hours to become available. Competitive wages, great benefits. Please call me. Gary Buchanan - Administrator - Tobacco Root Mountains Care Center, Sheridan, MT - (406) 842-5600 EOE  
40-4-b

MAMMOGRAPHY TECHNOLOGIST Part time mammogram technologist needed for rural, critical access hospital to perform screening mammography. Job responsibilities will cover mammography, all associated FDA, ACR, MRS documentation and Dexa. Must have ARRT active registry in radiology and mammography. Five years of digital experience required. Please see detailed job description and job qualifications on the Madison Valley Medical Center website. [www.mvmed-center.org/careers/](http://www.mvmed-center.org/careers/) or call the Imaging Department at 406-682-6612  
42-tfc-b

**Substitute Custodial Position Ennis School District**  
The Ennis School is looking for substitute custodial help. The knowledge or willingness to learn to work with various pieces of equipment, such as, floor machines, buffers, scrubbers, etc. Hourly rate is \$11.00 per hour. Deadline: Until Filled. For further information and a district application call Jon Wrzesinski at 682-4258.  
43-1-b

**Substitute Teacher Meeting Ennis School**  
Ennis Schools will have a meeting for any individuals interested in substitute teaching for the 2015-2016 school year on Tuesday, August 25th at 11 a.m. in the high school lobby. If you need any further information contact Superintendent, Jon Wrzesinski at 682-4258.  
43-1-b

## LOST

Lost box containing the audio book Absarko on CD. Last seen Saturday August 8 near Peter T's Park. Call 685-3545.

## FOUND



FOUND: Prescription eyeglasses on Moore's Creek Rd., Ennis Call 406 581-2315

## FOR RENT

Homes avail. for rent in Sheridan & Twin. Call property manager | 596-7893  
43-w-b

Sheridan 1bd 1ba apt for rent \$400/mo washer/dryer dswsr stove refer micro no pets contact Ridgley @ 596-4495  
43-tfc-b

MADISON VALLEY PROPERTY MANAGEMENT SANDI BOURGEOIS 406.599.1088 [sb\\_bourgeois@yahoo.com](mailto:sb_bourgeois@yahoo.com) RESIDENTIAL NEW CONSTRUCTION 3 BEDR/2 BATH ATTACHED DBL GARAGE PLUS SEPARATE GARAGE \$1400/MO NO PETS COMMERCIAL \*Downtown Ennis: 2300 SQFT Whse \$ 400/mo 850 SQFT Retail \$400/mo 1000 SQFT Retail \$375/mo  
43-tfc-b

**BARKER VILLAGE APARTMENTS:**  
1 bedroom unfurnished apartments available in Ennis. A/C, washer/dryer equipped, private location. 1 year lease, \$650 per month plus security deposit, utilities included, non-smoking, no dogs. Call Erich Vogeli, Manager at 406-682-5737.  
15-tfc

Horse pasture for rent. 12 irrigated acres. Fresh water. Five minutes from Sheridan. 842-7737.  
34-tfc-b

PETERSON'S DISCOUNT STORAGE Indoor & Outdoor RV/Boat storage, storage units. Ennis, 682-7442  
18-tfc-b

FOR RENT: Large mobile home site 1 mile from Ennis. 100 x 150', water & sewer, country atmosphere, quiet. NO DOGS. 682-4854.  
29-tfc

**BARKER VILLAGE APARTMENTS:**  
1 bedroom furnished apartments available in Ennis. A/C, washer/dryer equipped, private location. 4 month lease, \$700 per month plus security deposit, utilities included, non-smoking, no dogs. Call Erich Vogeli, Manager at 406-682-5737.  
15-tfc

ENNIS MINI STORAGE New low prices with 10 x 10's starting at \$35. Larger sizes available. Call Melinda at 596-4288.  
15-tfc

FOR RENT: Call Apex Management at 682-7112 or 581-0103 for long term or vacation rentals in Ennis and the Madison Valley.  
1-tfc

FOR RENT in Ennis 20 x 30 heated shops/storage. RV Storage also available. 581-7687.  
28-tfc-b

Beautiful half acre Mill Creek frontage property. 2bd/1 bath. Cozy Craftsman's style house, landscaped, sprinklers, (separate well) garage, washer/dryer. Sheridan/\$900 month. No smoking. No pets. 916-600-3018  
38-tfc-b

For Sale/For Rent. 1 bedroom trailer in Ennis or rent for \$375/month. Fenced in yard. 682-7552  
43-tfc-b

MADISON MANAGEMENT Vacation and Long Term Rentals 570-5401 [www.madisonmanagement.com](http://www.madisonmanagement.com)  
22-tfc

## FOR SALE



Purebred Great Dane puppies two male Harlequin and one female Mearle. \$900/apiece for male, \$800/apiece for female. First shots included. Call 685-3282  
43-2-b

Horse hay. \$6 per bale. 50 lb. bales. 75% grass, 25% alfalfa. Barn stores. Possible delivery. 422-8283.  
40-4-b

Adult hens, pullets, started chicks, ducks, geese, turkeys, guineas and more. Feeders and waterers. 577-6152  
42-tfc-b

For Sale Electric-powered hospital bed. \$350. 842-5505  
43-2-b

## SERVICES

Madison Valley Caring & Sharing Hours: Mon. Noon-2:00 p.m. Sat. 9-11:00 a.m. Wed. 6-8 p.m. Lone Elk Mall, Unit 4. Ennis. 682-7844  
30-tfc-b

**AUCTION - CABINET MFG SHOP LIQUIDATION -**  
Custom Craft Cabinets Inc. of Belgrade, MT is selling out! Professional Carpentry/Cabinet Manufacturing Equipment, Electric Hand Tools, Wood & More! All in very clean working condition! Sun, Aug 23 Belgrade. (406)684-5181 or Flyer is Online [HAGEDORNAUCTION.COM](http://HAGEDORNAUCTION.COM)

**DEEMO'S MEATS**  
Don't stress your livestock by taking them to slaughter. Let slaughter come to your ranch. To schedule an appointment, call 682-7306 or 600-0320 and ask for Scott.  
20-tfc-b

**Expert Tree Care**  
406-683-5592 406-865-0000 60' Lift Truck  
ISA Spring is ideal removing and pruning time!

GOPHER EXCAVATING Mini-Excavator/ 4x4 Tractor/ blade/bucket/ post auger : low impact / cross laws : only 5 ft wide : dig for tree planting : dig deck supports : trench water / sewer / lines : blade new driveways : No Job too small ! Low Cost ! Senior Discount ! 406-842-7737 916-600-3018  
38-tfc-b

Horse shoeing. 15 years experience. Fast, reliable service. Montana State University certified. Call Lee Carlson 290-4785.  
41-4-p

BLAKE MCKITRICK CERTIFIED FARRIER Horse Shoeing & Trimming Call (406) 595-5379  
26-4-p

PLACE YOUR CLASSIFIED 682-7755

## GARAGE SALE

Summer Long Yard Sale. 1610 Hwy 287, Nevada City 9:30-5:30 pm Now through September 12.  
32-1-b

Moving Sale. Aug. 22-23 9 a.m. - 2 p.m. 4 Lone Mountain on golf course. Quality household items, antiques, art, furniture, camping, automotive tools, guns and more. In Ennis. Check Craigslist.  
43-1-p

SEE STATEWIDE CLASSIFIED ADS ON PAGE A11

**WE'RE HEADING TO THE CATTLEMAN GALLERY**

**FOR THEIR 5TH ANNIVERSARY CELEBRATION!**

Refreshments, Live Music and featured artists  
*Sherry Gold e3 Barbara Swan Roger*  
FRIDAY, AUGUST 21st • 5-8 pm

413 W MAIN ST, HWY 287, ENNIS | 406-682-5775

**HILARIOUS COMEDY CABARET IN HISTORIC VIRGINIA CITY MT**

**THE BREWERY FOLLIES**

May 22-September 26, 2015  
SHOWTIMES 8PM & 4PM  
RESERVATIONS RECOMMENDED  
800-829-2969 EXT. 3 Tickets \$20

Garage Sale. Aug. 22, 9-3 pm. 308 Madison Harrison Almendingers Household items, mowers, air compressor, wood working tools and miscellaneous other items. No early birds  
43-1-p

## WANTED

I am seeking full time work in the Ennis area. I am well-versed in hay operations, repairs, irrigation, tractor maintenance and driving, discbines, balers, etc. I have 2 cow-savvy horses, my own tools, vehicle, horse trailer. I am very proficient with cattle, including winter calving, pulling, tagging, banding, etc. I provide my own health insurance. Salary is negotiable, but pasture space for my horses is a MUST. I have EXCELLENT local references and will be happy to supply them. Please contact me. I am a well-proven hard worker and you won't regret it. 35+ years experience, great attitude. Contact 209-2038.  
43-2-p

Wanted: 5x8 or 5x5 harrow with working teeth. Please call 684-5287.  
42-2-b

## ESTATE SALES

[www.AbleEstateSales.com](http://www.AbleEstateSales.com) WE BUY ESTATES or Manage Your Sale Call Mike at 406-723-1171 FREE APPRAISALS



# PUBLIC NOTICES

**SUMMONS FOR PUBLICATION**

MONTANA FIFTH JUDICIAL DISTRICT COURT MADISON COUNTY In re the Marriage of Virginia Bronwen Smithson, Petitioner and Lonny F. Smithson, Respondent. Cause No. DR-29-2014-26 THE STATE OF MONTANA SENDS GREETINGS TO THE ABOVE-NAMED RESPONDENT: You, the Respondent, are hereby summoned to answer the Petition in this action, which is filed with the Clerk of this Court, a copy of which is herewith served upon you, and to file your answer and serve a copy thereof upon the Petitioner within twenty-one days after the service of this Summons, exclusive of the day of service; and in case of your failure to appear or answer, judgement will be taken against you for the relief demanded in the Petition. This action is brought to obtain a dissolution of marriage. Title to and interest in the following real property will be involved in this action: 2001 Nissan Frontier Dated this 23rd day of July, 2015. Karen Miller Clerk of Court (Pub. Aug. 6, 13, 20 2015)bs MNAXLP

Karen Miller Clerk of the District Court (Pub. Aug. 13, 20, 27, 2015) ts MNAXLP

**NOTICE TO CREDITORS**

MONTANA FIFTH JUDICIAL DISTRICT COURT, MADISON COUNTY IN THE MATTER OF THE ESTATE OF EDWIN GUINNANE, a/k/a ED GUINNANE, Deceased. Probate No: DP-29-2015-17 NOTICE IS HEREBY GIVEN THAT KATHERINE J. GUINNANE by and through her counsel of record has been appointed Personal Representative of the above-named estate. All persons having claims against the said deceased are required to present their claims within four months after the date of the first publication of this notice or said claims will be forever barred. Claims must either be mailed to Personal Representative, return request, at the law offices of Corette Black Carlson & Mickelson, P.O. Box 509, Butte, Montana 59703, or filed with the Clerk of the above-entitled Court. Corette Black Carlson & Mickelson By: William M. Kebe, Jr. /s/ WILLIAM M. KEBE, JR. Attorneys for the Estate I declare under penalty of perjury that the foregoing is true and correct. Dated this 22nd day of July, 2015. /s/ Katherine J. Guinnane KATHERINE J. GUINNANE (Pub. Aug. 13, 20, 27, 2015 wk) MNAXLP

**MADISON COUNTY HOME SCHOOL FAMILIES:**

MONTANA FIFTH JUDICIAL DISTRICT All county Home Schools must notify the Madison County Superintendent of Schools of intent to home school at the beginning of each and every new school year. Home School Requirements: MCA Section 20-5-109 states: "To qualify its student for the exemption from compulsory enrollment under 20-5-102, nonpublic or home shall: (1) Maintain records on pupil attendance and disease immunization and make the records available to the county superintendent of schools on request; (2) provide at least 180 days of pupil instruction or the equivalent in accordance with 20-1-301 and 20-1-302 (Half-time Kindergarten 360 hrs, K-3 720 hrs, and 4-12 1080 hrs); (3) be housed in a building that complies with

applicable local health and safety regulations;

(4) provided an organized course of study that includes instruction in the subjects required of public schools as basic instructional program pursuant to 20-7-111; and (5) in the case of home schools, notify the county superintendent of schools of the county in which the home school is located in each school fiscal year of the student's attendance at school." Montana Code Annotated 20-5-109 (2011). Notify the County Superintendent of the intent to home school for 2015-2016 by September 15, 2015. Please return an instructional hour report at the end of the 2015-2016 school year by July 1, 2016. Please contact Pam Birkeland to request a home school packet via mail at PO Box 247 Virginia City, MT 59755, call (406) 843-4280, by fax (406) 843-5388 or e-mail at pbirkeland@madison.mt.gov. Thank you for your cooperation. Pam Birkeland, Madison County Superintendent of Schools (Pub. Aug. 13, 20, 2015 wk) MNAXLP

**MADISON COUNTY PLANNING BOARD NOTICE OF PUBLIC HEARING**

The Madison County Planning Board will conduct a public hearing on Monday, August 31, 2015 at 6:15 pm in the public meeting room of the Madison County Administrative Office Building, 103 W Wallace, Virginia City, Montana. The purpose of the public hearing is to receive comment on the proposed Silvertip 2 Subdivision Planned Unit Development. Silvertip 2 is a subsequent subdivision of Condo Lot A within Cowboy Heaven Phase 3C, Area 2 and would subdivide the 1.69 acre site into 5 single family home lots ranging from .15 acres to .23 acres and 2 open space lots. Located southeast of Cowboy Heaven Road and northwest of Mountain Loop Road in the NE1/4 of Section 24, T6S, R2E, PMM in Moonlight Basin. Written comments should be received by 3:00 p.m. on August 31, 2015, and may be sent to the Madison County Planning Board by: Mail to P.O. Box 278, Virginia City, Montana, 59755; Fax to (406) 843-5229; or E-mail to plan@madison.mt.gov. Oral or written comments may also be given at the public hearing. The preliminary plat and supplemental information pertaining to this proposed subdivision is available for review at: • Madison County Planning Office, 205 N. Broadway, Virginia City; • Madison Valley Library, 210 West Main Street, Ennis; • Big Sky Fire Department, Station 1, 650 Rainbow Trout Run, Big Sky Call (406) 843-5250 for more information. John Fountain, President, Madison County Planning Board (Pub. Aug. 13, 20, 2015 mcpb) MNAXLP

**BIG SKY FIRE DEPARTMENT AGENDA FOR AUGUST REGULAR MEETING**

WEDNESDAY, AUGUST 26, 2015 - 8:30 AM FIRE STATION NO. 1 Introduction of visitors and guests 1. Call to Order 2. Public Comment 3. Consent Agenda Items - Action Required: a. Approval of draft minutes of July 22, 2015 Regular Meeting b. Financial Reports for July 2015 c. Monthly Financial Statements d. Check Register: Checks 6114900 - 6114950; including voided checks 6114925 and 6114932 4. Fire Chief's Report - William Farhat 5. Correspondence 6. New Business a. Annexation Requests for Lahey

Properties:

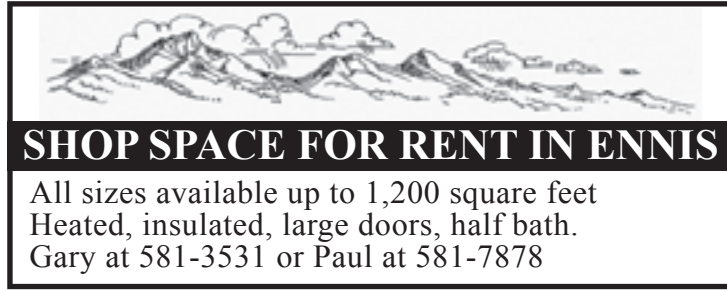
- W. Beaver Creek Road; Property Tax ID# RLE41102
- 419 Lost Pond Road; Property Tax ID# RLE46092
- 423 Lost Pond Road; Property Tax ID# RLE42089
- b. Addition of aka name to Big Sky Fire Department; adding Big Sky Fire District
- c. Firefighter Resignations (2)/Firefighter Hiring Proposal (3)
- d. Purchase 2 Physio Control LifePak 15 ECG Monitor/Defibrillators (Resort Tax Funded)
- e. Command Truck Purchase Proposal
- 7. Unfinished Business
- a. ESCI Master Plan Update
- b. Deputy Fire Chief Position Update & Request to Increase Starting Salary
- c. Briefing by David Fowler, Architect, on Station #1 Renovation
- 8. Other Business
- 9. Public Comment
- 10. Date for next regular meeting - September 23, 2015 @ 8:30 AM
- 11. Adjourn (Pub. Aug. 20, 2015) bsfd MNAXLP

**TOWN OF VIRGINIA CITY COUNCIL PUBLIC HEARING**

REHEARSAL HALL, 316 W. IDAHO STREET, VIRGINIA CITY, 09/03/2015 AT 7:00 P.M. TO HEAR A ZONING VARIANCE REQUEST FOR 22 X 28 OVERSIZED GARAGE BY RANDALL & JULIE STROBEL, BLOCK 148, LOTS 10-12 (Pub. Aug. 20, 27, 2015) tov MNAXLP

**PROPOSED BUDGET HEARING**

The preliminary budget of The Town of Sheridan, Madison County Montana, has been completed and is on file in the office of the town clerk. The budget is open for inspection on August 20 and August 27, 2015 from 1:00 p.m. to 2:00 p.m. at Sheridan Town Hall, 103 E. Hamilton Street, Sheridan, Montana. There will be a public hearing on Monday, August 31, 2014 at 6:00 p.m. at the Sheridan Town Hall, 103 E. Hamilton Street, Sheridan, Mt., at which time any taxpayer may be heard for or against any part of the said budget. Gail Leary, Clerk (Pub. Aug. 20, 27, 2015) tos MNAXLP



**SHOP SPACE FOR RENT IN ENNIS**  
All sizes available up to 1,200 square feet  
Heated, insulated, large doors, half bath.  
Gary at 581-3531 or Paul at 581-7878



**OUTPOSTEVENTS.NET**  
Southwest Montana's EVENTS Calendar



**Allhands Excavation, LLC.**  
Dan Allhands 406-842-5777  
Pete Allhands 406-596-7980  
Brian Allhands 406-596-1357  
Ponds, Roads, Reclamation, Stream Bank Stabilization, Utility Work, Foundations, Ditch Cleaning, Irrigation Diversions, and much more!  
EXCAVATOR, ROAD GRADER, DOZER, BACKHOE, DUMP TRUCKS, BELLY DUMP, TRANSPORT Put yourself in good hands!



**Christensen Rentals**  
406-682-4748 ~ Behind D&D Auto  
201 MADISON ~ ENNIS, MT  
RENTING: THE RIGHT WAY TO GET THINGS DONE  
Ask about the weekend rate - pick up on Saturday by noon and return Monday morning for a 1 day rate!  
**Landscape • Lawn & Garden Home Improvement & Construction**  
Rototillers, Power Rakes & Aerators  
Backhoe, Skidsteer & Mini Excavator  
Call for availability!  
Hours: Mon.-Fri. 7:30 a.m. to 5:30 p.m.  
Now open Saturdays 8 a.m. to 2 p.m.


**STATEWIDE ADVERTISING**  
Montana's statewide advertising network reaches 400,000+ readers of 63 newspapers each week...all for one low price!

2X2 AD \$406 2X4 AD \$812 2X6 AD \$1,218

REACH THE 406 FOR \$406

2X2 ad measures 3.7" horizontal by 2" vertical

One call to your local newspaper or call the Montana Newspaper Association 406.443.2850 | mtnewspapers.com





**Madison County Capital Improvements Plan Update Public Meetings**

Date: Friday, August 14, 2015 Time: 3:00 p.m. Location: Moonlight Entryway, 12 Mountain Loop Rd., Big Sky  
The Madison County Planning Board would like to hear from you. Join members of the Planning Board in a discussion of the condition of Madison County's roads, bridges, airports, landfills, and other critically important infrastructure. Your opinions will help Madison County prioritize projects, prepare budgets, and obtain state and federal funding to maintain and improve existing infrastructure as well as construct new facilities that are needed to protect public health and safety, look after our environment, and preserve our quality of life.

Date: Wednesday, August 19, 2015 Time: 7:00 p.m. Location: Sheridan Library Community Room

Date: Tuesday, August 25, 2015 Time: 7:00 p.m. Location: Ennis-Madison Valley Fire Hall



**PUBLIC RELEASE FREE AND REDUCED-PRICE SCHOOL MEALS**

Ennis School District announces the 2015-16 policy for Free and Reduced-Price School Meals for students whose schools participate in the U.S. Department of Agriculture [National School Lunch Program and School Breakfast Program]. The complete policy is on file in the central office and may be reviewed by any interested party.

Children from households whose income is at or below the levels shown in the following chart may be eligible for free or reduced-price school meals.

Household Size	Free			Reduced Price		
	Annual	Monthly	Weekly	Annual	Monthly	Weekly
1	15,301	1,276	295	21,775	1,815	419
2	20,709	1,726	399	29,471	2,456	567
3	26,117	2,177	503	37,167	3,098	715
4	31,525	2,628	607	44,863	3,739	863
5	36,933	3,078	711	52,559	4,380	1,011
6	42,341	3,529	815	60,255	5,022	1,159
7	47,749	3,980	919	67,951	5,663	1,307
8	53,157	4,430	1,023	75,647	6,304	1,455
Each Additional Person	5,408	451	104	7,696	642	148

Application forms will be sent to each home with a letter to parents or guardians. To apply for free or reduced-price meals, households must fill out the application and return it to the school. Applications may be submitted at any time during the year. Households will be notified of eligibility determination. At any time during the school year, program officials may verify an application. Households dissatisfied with the ruling of the officials have the right to a fair hearing. This may be done by calling or writing to:

\_\_\_\_ Jon Wrzesinski \_\_\_\_\_ PO Box 517, Ennis, MT 59729 \_\_\_\_\_ 406-682-4258 \_\_\_\_\_  
[Hearing Official] [Address] [Telephone]

**ALTACARE of Montana**  
"Kids are our business"

**POSITIONS AVAILABLE FOR THE 2015-2016 SCHOOL YEAR**

**BEHAVIORAL INTERVENTION SPECIALIST POSITIONS IN PARTNERSHIP WITH THE FOLLOWING SCHOOL DISTRICTS WHITEHALL, ENNIS and BOZEMAN**

The following positions are available within our Comprehensive School and Community Treatment program and will provide Mental Health Counseling to school age SED youth in a school setting. The behavioral intervention specialist assists in providing therapy and the implementation of treatment plans for school based children and their families. Working as a team (that comprises of a therapist and behavioral intervention specialist) in partnership with the school during the regular school year and summer programs as well. Altacare of Montana offers competitive salaries and benefits.

**BEHAVIORAL INTERVENTION SPECIALIST** Provides direct care for individuals and groups of select children in the Altacare Program. Previous experience in related field and/or bachelor's degree preferred but not required.

Please download application material from [Altacareofmontana.com](http://Altacareofmontana.com) website and submit completed application, along with cover letter, and resume to: Kathy Ogrin, Human Resource Manager, Altacare of Montana, 3738 Harrison Ave., Butte, MT 59701. EOE Phone: (406) 497-7905 Fax: (406) 497-7916. Email: [Kathy.Ogrin@acadiahhealthcare.com](mailto:Kathy.Ogrin@acadiahhealthcare.com)

**Three Great Services Under One Roof!**

**MDM CONSTRUCTION** **GOT GUTTERS** **HIGH R INSULATION**

Locally Owned & Operated  
Free Estimates - Licensed & Insured

Call Mike McKitrick Today!  
**406-682-4529**  
100 Prairie Way #2 - Ennis, Mt 59729



# Apprentice hunter rule approved

Submitted by Tom Palmer  
MONTANA FISH, WILDLIFE  
AND PARKS

Montana's Fish and Wildlife Commission approved a new rule this week that clears the way for the state's apprentice hunter law to take effect.

The law, enacted earlier this year by the state Legislature, allows youth 10-17 years of age to obtain a certification to purchase some

Montana hunting licenses before completing a hunter education course. Apprentice hunters, however, are required to be accompanied by an adult mentor.

The new rule approved Thursday defines certain mentor responsibilities and establishes the process for designating and identifying a mentor.

Under the law, apprentice-hunter certification is for two license years only. After two

years, the apprentice hunter must complete a hunter safety and education course.

An apprentice hunter is not eligible to obtain a special bow and arrow license without first completing a bowhunter education course; a resident hound training license for chasing mountain lion; a bighorn sheep license and an elk license if under 15 years of age. Nor can an apprentice hunter participate in any of Montana's limited-

quota hunting license or permit drawings.

Violation of the terms by an apprentice hunter or mentor could result in the loss of hunting privileges for up to one full license season.

The apprentice certification is available at FWP office - hunters must obtain a certification before hunting.

For more information visit FWP's website at fwp.mt.gov, then click Apprentice Hunter Program.

# Carina Garcia Hernandez participated in healthcare summer camp

Submitted by Shani Rich

Carina Garcia Hernandez from Ennis High School was one of 25 high school students from across the state of Montana who attended a MedStart Camp hosted at Great Falls College-MSU and University of Great Falls University Aug. 2 - 6. MedStart is a four-day program that explores healthcare careers. While

living in the dorms and being immersed in campus life, the students had the opportunity to job shadow at area healthcare facilities, attend college planning sessions, participate in healthcare simulation activities and explore a wide variety of healthcare opportunities.

Hernandez was part of a diverse group of exceptional students from a variety of community

sizes, demographics and interests. Students were selected to participate in the camp following a rigorous application and recommendation process.

Three earlier MedStart Camps were also hosted this summer at the University of Montana in Missoula, Montana Tech and Montana State University-Billings.

Montana, and the nation as a whole, is facing a

healthcare workforce shortage.

To develop the next generation of healthcare providers, the Montana AHEC system (Area Health Education Centers) coordinate the summer MedStart Camps as one way to spark student's interest in pursuing careers in healthcare. For more information about MedStart Summer Camp please contact Shani Rich at North Central Montana AHEC, 457-8018, shani@mth.ahec.org.

**Ruby Valley Hospital Physical Therapy**  
Occupational & Speech Therapy  
*Hands on care for all your body needs.*



Orthopedic & Sports Injuries  
Total Joint Rehabilitation  
Back & Neck Care  
Sore Stressed Muscles  
Tension Headaches & Chronic Pain

Self Care  
Home Safety  
Adaptive Equipment  
Hand, Wrist - & Elbow Syndromes  
Neurological Rehabilitation

Available Mon.-Fri. at Ruby Valley Hospital  
220 E. Crofoot, Sheridan, MT 59749-9508 **406-842-5081**

**GRAHAM DRILLING**  
SHERIDAN, MT



**Water Well Drilling, Solar Pump Systems for Stock Water, Pump Sales Installation, Service & Repairs**

Serving Residential & Commercial Customers in Madison County for over 30 years

Quality Service at a Fair Price

Phone (406) 842-5214 or (406)682-5290  
[WWW.GRAHAMDRILLING.COM](http://WWW.GRAHAMDRILLING.COM)

**D&D Auto, Inc.**  
AUTO & TRUCK SALES  
We Are YOUR Go to Guys!

Auto & Truck Repair - Gas or Diesel - All Makes & Models

We Make Hydraulic Hoses  
New Tires, Wheels & Tire Repairs  
Engines & Transmissions Installed - Car & Truck Accessories

We Install Windshields - Alignments

**ENNIS • 682-4537**

Daily Parts Deliveries to Alder, Sheridan & Twin Bridges Areas  
**24 Hour Towing (CELL 406-570-9872)**

**H.F. HARDY**  
PAINTING & DECORATING

PPG PITTSBURGH PAINTS

Interior/Exterior • Painting/Staining  
Hardwood Floor Finishing  
Prefinishing of Mill Work  
Media Blasting • Chinking

PPG AND AKZO NOBEL PRODUCTS AVAILABLE AT OUR RETAIL STORE: THE PAINT DOCK

paintdock@3rivers.net  
842-5119 • Sheridan

**KEEP-YOU-IN-STITCHES**

JAN WOOD

Clothing Alterations  
Custom Sewing

682-7824 • 600-2518



**AREA SENIOR MEALS**

**SENIOR MEALS, VIRGINIA CITY**  
Summer Senior meals for Madison County Seniors 60 and over will be served at the Wells Fargo on Wednesdays and Fridays beginning May 20 from 11:30am to noon for \$3.00.

**MEALS FOR SENIORS, TWIN BRIDGES**  
The TBS&CC provides meals for seniors every Tuesday and Friday at 11:30 a.m. at the Wagon Wheel Restaurant in Twin Bridges for seniors 60 years and up. (Spouse and caregivers are invited.) Donations for meals are appreciated.

**RUBY VALLEY FOOD PANTRY, SHERIDAN**  
Open Saturdays from 10 a.m. - noon. Located at 114 N. Main St. in New Beginnings. Serving the Ruby Valley from Silver Star to Virginia City. Contact Doris at 842-7161 or Wannetta at 842-5783 for more information.

**MEALS ON WHEELS, SHERIDAN**  
The Sheridan Senior Center offers meals for seniors 60 years and over Monday - Friday. Seniors may choose to eat at the senior center, family style for \$3.50 or have their meal delivered for \$4.00. Delivered meals are within the city limits of Sheridan and should be called in by 10 a.m. Call Shirley Sand at 842-5966.

**Ruby Valley Baptist Church**  
Tony Shaw, Pastor  
842-5602

Sunday School 9:45 a.m.  
Worship Service 11 a.m.  
Sunday Evening 6 p.m.  
Wednesday Eve 7 p.m.

One block behind IGA, Sheridan

**Find Fellowship With Us**



**Rocky Mountain Baptist Church**  
682-4949

Sunday School 9:30 a.m.  
Morning Worship 11 a.m.  
Evening Service 6 p.m.  
Mid-Week Service, Wednesday 6 p.m.

606 Comley Way, Ennis  
6 Blocks South of City Complex

Located in the heart of Madison Valley for the Hearts of Madison Valley

**Dayspring Church**  
Worship 10:00 a.m.  
Sunday School/Nursery

**Non-Denominational Christ Centered, Spirit Led Worship**  
Joel Trenkle/Pastor

Check website for ministries: dayspringsheridan.com

596-0707 • 3648 Hwy 287  
Between Sheridan & Twin Bridges

**HARRISON COMMUNITY CHURCH**  
Harrison, Montana

Adult Bible Study ~ 9:30 a.m.  
Sunday School & Church Services ~ 10:30 a.m.

Pastor Joe Miller  
Come Worship & Sing Praises To Our God. Spread the Word!

**CHURCH OF JESUS CHRIST OF LATTER-DAY SAINTS**  
Sheridan Ward - Visitors Welcome

Sacrament Meeting  
Sundays, 10:00 a.m.  
Sunday School  
11:20 a.m.

R S & Priesthood  
12:10 p.m.  
Mutual (Youth Group)  
Wed. 7:00p.m.

3560 | MT State Hwy 287  
Sheridan 842-5860

Bishop Dustin 684-5255

**Liturgy Schedule**

**St. Patrick, Ennis**  
Sunday ~ 8:30 a.m.

**St. Mary, Laurin**  
Sunday ~ 10:30 a.m.

Deacon Andy Dorrington,  
Pastoral Administrator ~ 842-5588

**Madison Valley Presbyterian Church**

WORSHIP  
September - April ~ 11 a.m.  
May - August ~ 9 a.m.

Everyone Welcome  
Fully Accessible

Rev. Jean M. Johnson  
682-4355 ~ Ennis  
Corner of S. Charles & W. Hugel

**Dr. Ray Teston**  
Pastor

Sunday School ~ 9:45 a.m.  
Morning Worship ~ 11:00 a.m.

5050 Hwy 287, PO Box 668, Ennis, MT  
Phone 682-4244 SBC  
**MADISON VALLEY BAPTIST CHURCH**  
Aides for the hearing impaired

**Shepherd of the Hills Lutheran Church**

The Church of Word and Sacrament  
Visitors Welcome

Pastor Ken Stensrud

- Sunday Service 9:00 am
- Bible Study 10:15 am
- Sunday School 10:15 am

Corner of Madison and Armitage St.  
Ennis, Montana 406-684-4400

**CHURCH OF JESUS CHRIST OF LATTER-DAY SAINTS**  
Ennis Branch

Sacrament Meeting  
10:00 a.m.  
Sunday School  
11:20 a.m.

R S & Priesthood  
12:10 p.m.

Family History Center  
682-4911, 682-7415, 682-3614  
Pres. Thompson 682-7415  
133 MT Hwy 287

**Christian Science Society**

Sunday Service & Sunday School 10 a.m.

**ALL WELCOME**

Each week a Bible lesson full of healing Christian concepts is read aloud in our Sunday service.

4983 US Hwy 287 N. • Ennis, Montana  
[www.spirituality.com](http://www.spirituality.com)

**THE BAHAI FAITH**

To look always at the good and not at the bad. If a man has ten good qualities and one bad one, to look at the ten and forget the one; and if a man has ten bad qualities and one good one, to look at the one and forget the ten. Never to allow ourselves to speak one unkind word about another, even though that other be our enemy.

451-3923 or 1-800-UNITE  
[www.baha'i.org](http://www.baha'i.org)

**ENNIS ASSEMBLY OF GOD**  
Love God, Love People

**SUNDAY SERVICE SCHEDULE**

Bible Study 9:45 a.m.  
Worship Service 10:45 a.m.  
Children's Church 10:45  
Wednesday Youth Group 6:30 p.m.  
Wednesday Prayer Meeting 7:00 p.m.

402 Madison Ave - Ennis, MT  
682-4197

**NEW BEGINNINGS CHRISTIAN FELLOWSHIP**

Your Local Assembly of God Church

114 N. Main, Sheridan  
842-5845

Pastor Duane Deshner

Sunday Service  
10:30 a.m. (Children's Ministry)

Wednesday (Kids/Youth)  
6:30-8:00 p.m.

Kid's Club (3 yrs-4th grade)  
Pre-Teen Youth Group (5th-6th grade)  
Youth Group (7th-12th grade)

Ruby Valley Food Pantry  
Saturdays: 10:00 a.m.-Noon

We are a church dedicated to serving this valley!

**Ruby Valley United Methodist Parish**  
Invites You To Worship With Us

Pastor Paul Stearns  
Office: (406)842-5934  
Home: (406)842-7732

**Church of the Valley Twin Bridges**  
Sunday School 11:00 a.m.  
Worship 11:00 a.m.  
Youth Group Weds at 6:30 pm

**Bethel UMC Sheridan**  
Worship 9:00 a.m.  
Sunday School 10:15 a.m.  
Youth Group Sunday evenings

**Ready Set Grow Preschool**  
Contact Kaycee Gilman 842-5311

**Madison County Episcopal Churches**  
In full communion with the Evangelical Lutheran Church in America

**Join Us for Sunday Worship!**

<b>Trinity</b> Jeffers/Ennis 7:15 a.m. 11:00 a.m.	<b>St. Paul's</b> Virginia City Sunday 9:00 a.m.	<b>Christ Church</b> Sheridan Sunday 10:00 a.m. Bible Study 9:00 a.m.
--	---	--

[www.rvec.org](http://www.rvec.org)

Prayer requests:  
682-4788 843-5296 842-7713

**GRACE COMMUNITY FELLOWSHIP**  
In Association with The Conservative Baptists of America

**COWBOY CHURCH - Nevada City**  
10 am - All Summer

Christ-centered,  
Bible Based Teaching  
Open Question Forum

Tel. 406-842-5915  
Pastor Tom Luksha

**King Crossword**  
Answers  
Solution time: 25 mins.

J	I	M	Y	O	K	E	F	O	R	E
A	D	A	A	V	E	H	I	B	S	
W	A	T	C	H	I	N	G	B	O	B
C	I	O	D	O	B	F	S	F		
W	A	H	O	O	K	A	N	E		
A	I	T	P	O	W	E	R	F	R	I
R	O	V	M	O	R	E	S	E	N	E
D	E	G	R	A	D	E	O	T	I	S
E	L	S	A	P	A	C	T	S		
A	P	R	I	L	S	E	T	H		
R	O	A	N	P	I	T	C	H	I	N
I	S	L	E	A	R	H	A	N	Y	L
D	E	E	D	D	A	M	N	G	U	M

**ALCOHOLICS ANONYMOUS**  
Meeting Every Thurs. at 8 p.m., Church of the Valley, Twin Bridges

**ALANON MEETING**  
Same Time - Same Place

**ALANON**  
Twin Bridges • Church of the Valley  
Thursdays, 8 pm

**ALANON**  
Pony School House • Weeds, 7 pm  
Suzy 685-3692

**ENNIS ALANON**  
Monday ~ 10:45 a.m.  
Basement of Madison Valley Presbyterian Church, Ennis  
Hugel & Charles  
CALL 682-5097 or 682-7023

**"Keep it Simple."**  
**A.A. MEETING**  
Bethany Hall, Sheridan  
(behind Methodist Church)  
Wednesdays ~ 8 p.m.

**Vennis Over The Hill Unity Group**  
Faced with a drinking problem?  
Perhaps Alcoholics Anonymous Can Help.  
SUZAN - 10 a.m., No Smoking,  
Virginia City Library

MON. - Open, 7:30 p.m., Basement of M.V. Presbyterian Church, No Smoking  
WED. - 7:30 p.m., Trinity Church in Jeffers  
FRI. - Open, 7:30 p.m., Basement of M.V. Presbyterian Church, No Smoking

682-3490, 682-7023 Ennis  
843-5352 Virginia City

**Celebrate Recovery**  
Meets every Saturday at 6 p.m. & starts with a meal.

**DAYSRING MISSION**  
3648 Hwy 287, Sheridan  
596-0707



# TIME TO GET READY!

The 2015-2016 school year is quickly approaching! Here is a list of supplies for students in the Ruby Valley!

## SHERIDAN

*Suggestion: When possible, initial or print child's name on all personal items with a permanent marker.*

### KINDERGARTEN:

- Crayons 16 pack
- Pencils (2 packages)
- Pencil/Marker Box
- 20 Glue Sticks
- Scissors
- 2 Boxes of Kleenex Tissues
- Backpack
- Pencil Erasers
- Colored Markers
- Gym Shoes - NON SKID (required for PE)
- Folder

1 Notebook

### 1st GRADE:

- Pencils
- Erasers
- Chapstick
- 1 Box Kleenex Tissues
- Colored Pencils
- Color Markers
- Crayons 8-16 colors
- Pencil/Marker Box (small)
- Scissors
- Gym Shoes - NON SKID (required for PE)

### 2ND GRADE:

- Several #2 Pencils
- 1 box Crayons

- Colored Pencils
- Erasers
- 1 box Kleenex
- 4 Glue Sticks
- Notebook Paper
- Scissors
- Gym Shoes - NON SKID (required for PE)

### 3RD GRADE:

- #2 Pencils
- Erasers
- Colored Pencils
- Notebook Paper
- Crayons
- 2 boxes Kleenex
- Scissors
- Folder

- Glue
- Ruler
- Pencil Box
- Gym Shoes - NON SKID (required for PE)

### 4TH GRADE:

- Several #2 Pencils
- Erasers
- Pens (Blue or black and red)
- Crayons or Colored Pencils
- 3 Spiral Notebooks (wide rule)
- Loose Leaf Notebook Paper (wide rule)
- 3 boxes Kleenex
- 3 Folders (for assignments)
- Gym Shoes - NON SKID (required for PE)

Optional Supplies:  
Scissors, Glue, Ruler

### 5TH GRADE:

- Pencils
- Pens (Blue or Black)
- Erasers
- Crayons or Colored Pencils
- 1 Spiral Note book with 3 (or more) subject divisions
- Loose Leaf Notebook Paper (wide or college)
- Pocket Folders (at least 2)
- 2 boxes of Kleenex for Class Supply
- Gym Shoes - NON SKID (required for PE)
- Optional Supplies
- Scissors, Glue, Ruler

### 6TH GRADE:

- Several pencils (if mechanical, please provide the lead)
- Pens (Black or Blue and red)
- SMALL binder for paper (no room for large ones)
- Loose leaf notebook paper (college rule)
- 3 -4 Assignment notebooks
- 6 - 2 pocket folders
- Gym Shoes - NON SKID (required for PE)
- 2 big boxes of Kleenex
- Crayons or colored pencils
- Optional supplies: scissors, glue or glue sticks, rulers, pencil box

## TWIN BRIDGES

*PE shoes for all classes; they are to have a non-marking sole, be left at the school, and have the child's name or initials put in them.*

child they can share, maybe a memory or fun event from the summer. It will be returned. PE shoes

notebooks (70-page)  
2 folders with pockets  
1 canister disinfecting wipes  
1 box Kleenex  
1 small school box to hold pencils and pens  
1 backpack

Glue sticks  
A pencil box or zippered pouch  
box of kleenex  
t-shirt and shorts for gym class  
PE shoes

### 2ND GRADE

- #2 pencils, 12 pack
- Crayons
- Colored pencils, 12 pack
- Markers
- Erasers
- Ruler, showing standard & metric
- File box, 1 - 3x5 size, and A-Z dividers
- 1 box Kleenex
- Small supply box (2nd grade continued)
- Scissors
- 2 glue sticks
- Backpack
- PE shoes

Please, no trapper keepers or large school boxes

### 6TH GRADE

- Trapper Keeper or 3-ring binder
- Pencils
- Pens (black or blue)
- Colored pencils
- Paper or notebooks
- Composition book or journal
- 6 folders
- Compass
- Protractor
- Ruler (with inches and metric)
- Highlighters
- Calculator (not scientific)
- Scissors
- Glue
- t-shirt and shorts for gym class
- PE shoes

### KINDERGARTEN

- 1 pair childrens scissors
- 4 large pink erasers
- 6 large white glue sticks
- 1 box 16-count crayons
- 4 folders with pockets
- 1 supply box to store pencils, crayons, etc.
- 1 pair gym shoes
- 1 box Kleenex
- 1 bag/box of cereal (Fruit Loops, Cheerios, Honey Comb - countable size)
- 1 backpack
- 1 box 8-12 count colored markers
- Extra change of clothing
- blanket
- PE shoes

### 4TH GRADE

- #2 pencils
- Pens
- Crayons
- Markers
- Colored pencils
- Highlighter
- Erasers
- Ruler, standard and metric
- Protractor
- Kleenex
- Folders w/ pockets
- Wide ruled notebook paper
- College ruled notebook paper (4th grade continued)
- Scissors
- Glue or glue sticks
- Assignment book
- PE shoes

### 3RD GRADE

- 1 art shirt
- 3 packages
- #2 pencils (preferably Ticonderoga brand)
- 1 yellow highlighter
- 1 black sharpie pen
- 3 glue sticks
- 1 small box colored pencils
- 1 box color crayons (12 or 24 pack)
- 1 pink pearl eraser
- 1 pair Fiskars scissors
- 1 ruler (showing standard & metric measure)
- 1 red pen or red
- Flair thin -line pen
- 1 package thin-line markers (optional)
- 3 wide-ruled spiral

### 1ST GRADE

- 1 package #2 pencils (no clicky pencils)
- 2 large pink erasers
- 1 box crayons (no markers or colored pencils)
- 1 ruler with inches and centimeters
- 1 pair scissors
- 2 glue sticks (no runny glue)
- 1 work box to hold the above items
- 1 box Kleenex
- 1 container disinfecting wipes
- A picture of your

## MADISON VALLEY HOME TOUR - 2015

*"Pure Montana" to "Globally Inspired"*

Saturday • August 22, 2015 • 10 am - 5 pm



**\$25 ADVANCE TICKETS available at**  
 • **Madison Valley Medical Center**  
 305 N. Main (US Hwy 287), Ennis  
 • **Ennis Chamber of Commerce**  
 Downtown Ennis

**\$30 DAY OF TOUR TICKETS at**  
**Madison Valley Medical Center**  
 9:30 - 11 am



### Win an "Adventure" Silent Auction

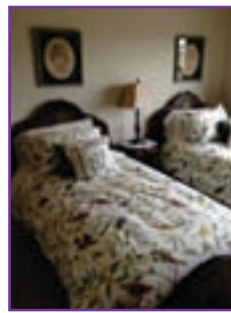
• **MADISON RIVER FLOAT TRIP with fly casting lessons for 2 along with a fishing "library"**

• **A "PRIVATE RESIDENCE" TOUR at Yellowstone Grizzly & Wolf Discovery Center for 4 people**

• **A NIGHT AT MOOSE SPRINGS CABIN with meals and an ATV tour for 2 people**

• **HORSEBACK RIDING in Big Sky country with lunch for 2**

• **A "MADISON VALLEY" HAND-CRAFTED lamp to enhance your Montana decor**



Contact [hometour@mvmc.org](mailto:hometour@mvmc.org) for more info

Presented by the  
**MADISON VALLEY MEDICAL CENTER**  
 AUXILIARY

If a home becomes unavailable, effort will be made to find a replacement

**Proceeds used to buy medical equipment**

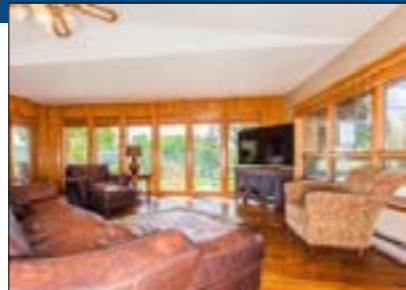
**Special "quick lunches" available for purchase day of tour at:**  
 Pic-A-Nic Basket  
 Summit • Gravel Bar  
 Yesterdays



**Commercial Horse Prop. - Ennis - \$595,000**  
 3 bd, 2 ba • 20+/- acres, 1280 +/- SF • 14 stalls, 8 covered runs, 100x60 arena • 3 moveable shelters & 1 stationary shelter • show barn has insulated hot and cold wash • Madison Range views, close to town



**Shining Mtns. II Lots- Ennis - \$689,000**  
 3 bd, 2 ba, 2560 +/- sf • 20.76 +/- irrigated acres • large heated barn/shop w/ meat cutting room • chef's kitchen with granite counters & back splash • loading shed, fenced & cross fenced pastures • Large windows and outstanding views



**Centennial Drive - Ennis - \$399,000**  
 3+bd 3.5 ba, 3864 +/- sf • 4th non-conforming bedroom + office • 1.29 +/- acres - oversized lot • private golf course lot • close to town, seasonal ditch • open floor plan, mature landscaping



**N. Meadow Creek - McAllister - \$539,000**  
 3.27 acres • 3 bd 2 ba w/ office, 2,704 +/- sf • 1600 sf shop to fit RV • spectacular views • close to all recreation activities • beautifully landscaped



**246 Middle Rd - Sheridan - \$557,900**  
 3 bd, 4 ba, 2530 +/- sf • 35.53 +/- acres, irrigated • large windows with mountain views • riding arena + livestock shelters • fully fenced & cross fenced pastures • one mile to Ruby River access



**Old Stage Road - Whitehall - \$475,000**  
 400 +/- acres  
 • 3 br, 2 ba, 1280 +/- sf  
 • access to public land  
 • private, great value  
 • small cattle or horse operation



**Bear Creek Loop Rd - Cameron - \$689,000**  
 3 bd, 3 ba, 3500 +/- sf • 49 +/- acres fabulous horse property • overlooking Sphinx Mt., landscaped • creek, orchard NO COVENANTS • barn, tack room, arena, shop • additional 80 acres may be available • assumable mtg to qualified buyer



**Hillard Tr, Madison River Ranches - \$795,000**  
 2 br, 2 ba 3072 +/- sf • 20 +/- acres with beautiful log home • 1.5 miles of private Madison River fishing access • gated community • spectacular views of the Madison Range & Madison River • end of road privacy, lots of wildlife



**Bill Mercer, Broker/Owner**  
**RE/MAX Mountain Property**







## RESISTING CHANGE SINCE 1863!

*Some folks made a fortune here...  
But what they left behind is priceless.*

All of Montana has the deepest pride and affection for Virginia City. No more colorful pioneer mining camp ever existed. Dramatic tales of the early days in this vicinity are legion. Rich placer diggings were discovered in Alder Gulch in the spring of 1863 and the stampede of gold seekers and their parasites was on! Sluices soon lined the gulch and various "cities" blossomed forth as trading and amusement centers for free-handed miners. Virginia City, the best known of these and the sole survivor, became the Capitol of the Territory.

The very much alive ghost town, Virginia City, Montana, is frozen in time. It is a remarkably well-preserved Old West Victorian gold mining town just 50 miles west of Yellowstone National Park (90 miles by road). When the gold ran out, there was still enough left so that homes and businesses were occupied, but there was not enough wealth to remodel the buildings. So it froze, and now represents the whole Victorian era. Virginia City is the true and original Old West. It is a gem, held within an incredibly rich area of natural beauty, recreation and history.

*Come rediscover Virginia City & Nevada City, Montana!*



come and **STAY & PLAY**

*today!*



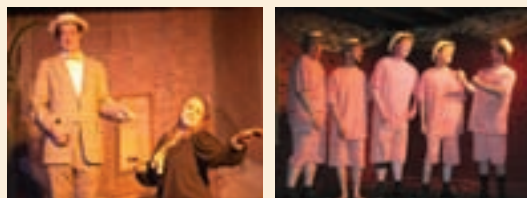
**A MELODRAMA PLAY**  
PLUS OUR VARIED, VIGOROUS, VAGARY  
OF VIVACIOUS VAUDEVILLE VARIETY ACTS!

May 22-June 21  
**BOX & COX**

June 23-July 26  
**THE BLUNDERING HERD**

July 28-Aug 23  
**THE PHANTOM OF THE OPERA**

Aug 25-Sept 20  
**BOX & COX**



**SHOW TIME** | Tu, W, F & Sat 7pm  
| W, Th, Sat & Sun 2pm

**TICKETS** | Adult \$20  
College, Seniors, Military \$17  
Children 17 & under \$10  
Group discounts available

**1.800.829.2969**  
www.virginiacityplayers.com

**NOW AIR CONDITIONED!**

**BREWERY FOLLIES**  
NONSENSE AND PARODY  
HILARIOUS COMEDY CABARET  
H.S. GILBERT BREWERY



*a cabaret show...wild enough for any old-time miner!*  
-David G. Hesser, SUNSET MAGAZINE  
**MAY 22 - SEPTEMBER 26, 2015**



**SHOWTIMES 4 PM & 8 PM**  
**CALL FOR RESERVATIONS**  
**800-829-2969 EXT 3 TICKETS \$20**

**\$129**  
to those who have  
spent the night at the  
Fairweather Inn or  
Nevada City Hotel

**FAMILY FUN DAY PASS**

Good for 2 days for families of 5  
Purchase at VC Depot or NC Museum

**\$69**

**Packages include:**  
ENTRANCE INTO  
MUSEUM, UNLIMITED  
TRAIN RIDES, GOLD  
PANNING FOR A FAMILY  
OF FIVE.

**\$49**  
for Madison County  
Residents, Military,  
State Employees  
& those who have stayed  
the night at a Montana Hotel  
(receipt required)

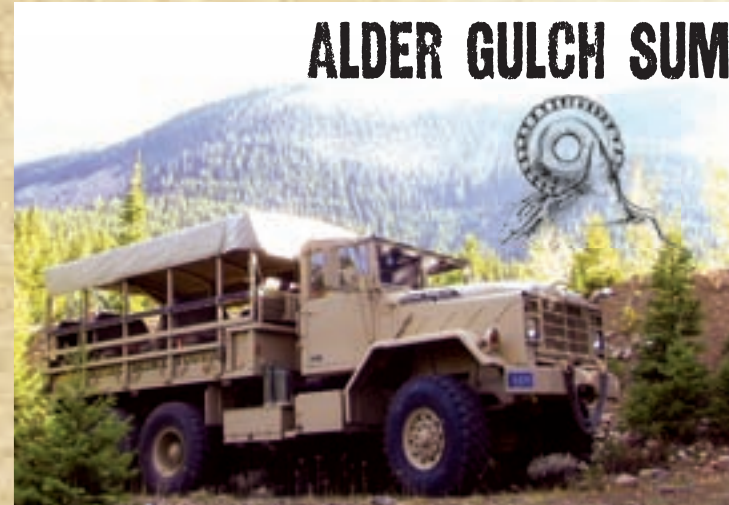
**MONTANA HERITAGE COMMISSION**  
1.406.843.5247  
WWW.VIRGINIACITYMT.COM



**LIVING HISTORY EVERY WEEKEND**  
between mid-May through mid-Sept!



August 22-23 The End of the Innocents  
August 29-30 The Women of the Gulch  
Sept 5-7 Jack Slade's End  
Sept 12-13 Beans, Bacon & Bannock Bread



### ALDER GULCH SUMMIT TOURS

PRESENTED BY NELSON STUDIOS LLC

Enjoy a 90+ minute ride through the heart of Montana's gold country. Learn the fascinating history behind the single largest gold strike in the Nation's history.

Enjoy live historical interpretation as you see the wonders of Alder Gulch aboard Colossus, the largest off road tour truck in Montana.

TOURS DEPARTING HOURLY  
JUNE-AUGUST EVERY DAY

### Upcoming 2015 Events

Aug 28	Bozeman Trail Chuckwagon Cookoff	406.579.2477
Sept 5	Labor Day Horseback Poker Ride	406.843.5700
Sept 11	SOB (Save Our Buildings)	406.843.5700
Sept 12	Bozeman Symphony @ The Elling House	406.843.5454



Montana Heritage Commission  
PO Box 338  
Virginia City, MT 59755  
www.virginiacitymt.com

Virginia City Area Chamber  
PO Box 218  
Virginia City, MT 59755  
www.virginiacity.com



Find us on Facebook! Virginia City Montana {Chamber of Commerce}

*This advertisement was paid for by the Montana Heritage Commission through the accommodation taxes.*



# OUTPOSTEVENTS.NET

B10 Thursday, August 20, 2015

GO TO [outpostevents.net](http://outpostevents.net) FOR A COMPLETE LISTING OF EVENTS

## FRIDAY AUGUST 21

**Cattleman Gallery's Fifth Anniversary Celebration, Ennis**  
We are celebrating our fifth Anniversary in Ennis! Please come out and enjoy refreshments and meet our featured artists, Sherry Gold and Barbara Swan Roger. 5 to 8 p.m.

## SATURDAY AUGUST 22

**Quilts of Valor, Ennis**  
11 a.m., Madison Valley Public Library. Kathy Coonts, state coordinator for the Quilts of Valor Program, will discuss their program of quilts for veterans. She will bring quilts for display and talk about our local quilting group.

**Madison Valley Home Tour, Ennis**  
Tour six distinctive homes in the Ennis area. Styles range from "Pure Montana" to "Globally Inspired." Tickets available at the MV Medical Center or Ennis Chamber of

Commerce. Proceeds go for purchase of medical equipment at the MV Medical Center.

## THURSDAY AUGUST 27

**The Life and Times of Frank Bird Linderman, Series Two, Laurin**  
Please join us in Laurin for our next event, The Life and Times of Frank Bird Linderman, Series Two at Robber's Roost at 6 p.m.

## AUGUST 28-29

**Studio opening, Sheridan**  
Jennifer and Patrick are opening their studio, Friday and Saturday - Aug. 28 and 29 from 11 a.m. to 4 p.m. each day. Com visit and see small original oil paintings not available in any gallery including some Ruby Valley landscapes. From Sheridan, drive 4 miles up Wisconsin creek road, past the yellow cattle guard and follow balloons to 9 Booth Gulch lane. Everbody who

visits has a chance to win an original oil painting. Call 842-7172.

## AUGUST 28-29-30

**VC Chamber of Commerce**  
Bozeman trail commemorative chuck wagon cook off celebrating the anniversary of the first wagon train arriving in Virginia City on the Bozeman Trail. Come for food, poetry, speakers and music.

## SATURDAY AUGUST 29

**NRA concealed weapons class, Ruby Valley Gun Club, Sheridan**  
9 a.m. Rocky Mountain Firearms Instruction will be conducting an NRA concealed weapons class, which includes pistol shooting and home firearms safety. The class is taught by an NRA certified instructor. Call 599-6952 for more information and to sign-up.

## THURSDAY SEPTEMBER 3

**Business After Hours, Ennis**  
BAH hosted by The Tackle Shop from 5 to 7 p.m. Free networking event open to all chamber members and their guests. Come visit, exchange business cards, brochures and be sure to enjoy appetizers and cocktails.

## THURSDAY SEPTEMBER 10

**Madison Valley Book Club, Ennis**  
1 p.m. at Madison Valley Public Library. Discussion of Unbroken, by Laura Hillenbrand. Discussion led by Shirley Love.

## SATURDAY SEPTEMBER 12

**Bozeman Symphony Far Afield program, Virginia City**  
7 p.m., Elling House Arts and Humanities Center. Absaroka Winds is an ensemble made up of four professional woodwind players and educators who perform on flute, oboe, English horn and bassoon. The

group's repertoire is far ranging, consisting of traditional woodwind quartets, and music in a variety of styles arranged especially for this unique ensemble. Please contact Barbara Pierce at [eotm@ennisartsassociation.org](mailto:eotm@ennisartsassociation.org) or 570-0711 for more information.

## THURSDAY OCTOBER 1

**Business After Hours, Ennis**  
BAH hosted by Maples Coffee from 5 to 7 p.m. Free networking event open to all chamber members and their guests. Come visit, exchange business cards, brochures and be sure to enjoy appetizers and cocktails.

## THURSDAY OCTOBER 8

**Madison Valley Book Club, Ennis**  
1 p.m. at Madison Valley Public Library. Discussion of Calling Me Home, by Julie Kibler. Discussion Leader, Barbara Hoag.

## THURSDAY NOVEMBER 12

**Madison Valley Book Club, Ennis**  
1 p.m. at Madison Valley Public Library. Discussion of Wings by Sue Monk Kidd. Discussion leader, Judy Miller.

**THE MADSONIAN**  
**682-7755**  
*Call to Subscribe or Advertise today.*

### OPEN HOUSE AT McCLELLANS' ART STUDIO

Jennifer & Patrick are opening their studio Fri & Sat - Aug 28 & 29 from 11 to 4 each day. Come visit...and see small original oil paintings not available in any gallery including some Ruby Valley landscapes. From Sheridan drive 4 1/2 miles up Wisconsin Creek Rd, past yellow cattleguard, then follow balloons to 9 Booth Gulch Lane. Everybody who visits has chance to win an original oil painting. Call 842-7172 for more info.

## ENNIS CITY Ramblers

Dave Dennis Jim

AMERICAN FOLK SONGS AND COWBOY-WESTERN MUSIC

Our upcoming performance dates are:

Fri. 8/21, Norris Hot Springs, Norris, 7:00-9:30 pm  
Thurs. 8/27, Gravel Bar, Ennis, 8:00-10:00 pm  
Sat. 8/29, Wells Fargo Steak House, Virginia City, 6:00-8:00 pm  
Thurs. 9/3, Sacajawea Hotel, Three Forks, 5:00-8:00 pm  
Fri. 9/4, Willie's Distillery, Ennis, 5:30-7:30 pm

For more information, contact Dennis Aigner, (406) 682-4681 or [djaigner@aol.com](mailto:djaigner@aol.com).



### WILLIE'S DISTILLERY UPCOMING EVENTS:

32 E MAIN STREET, ENNIS 846-82-4117  
[WWW.WILLIEDISTILLERY.COM](http://WWW.WILLIEDISTILLERY.COM)

EVERY FRIDAY WE HAVE LIVE MUSIC FROM 5:30 - 7:30 PM

COME JOIN THE FUN, LISTEN TO SOME GREAT MUSIC AND ENJOY SPIRITS WITH A WESTERN FLAVOR!!

SUNDAYS FROM 2 - 4 PM  
WE HAVE A BLOODY MARY BAR WITH LIVE MUSIC  
FRIDAY AUG 21ST: THE BARN BOYS  
SUNDAY AUG 23RD: ETHAN KUNARD  
FRIDAY AUG 28TH: BROWN BOTTLE TWO  
SUNDAY AUG 30TH: THE BARN BOYS  
FRIDAY SEPT 4TH: ENNIS CITY RAMBLERS  
ASK ABOUT OUR WEEKLY BOTTLING PARTIES!!

## MADISON THEATRE 682-4023

115 Main St., Ennis, MT

Friday, August 21 - Sunday, August 23

### TRAINWRECK (R)

Friday & Saturday 7:15 pm Matinee Sunday 4:00 pm

Coming Soon -

MISSION: IMPOSSIBLE ROGUE NATION (PG-13), RICKI AND THE FLASH (PG-13)

Evenings: Adults \$8 • Children (12 & under) \$6 Show time at 7:15 pm, Box Office opens at 6:30 pm

Find us on at [Madisontheatreennis.com](http://Madisontheatreennis.com) [www.ennismovies.com](http://www.ennismovies.com)

## REGULAR WEEKLY EVENTS

### MONDAYS

**Commissioner's Meeting, Virginia City**  
Madison Co. Commissioners meet every Monday, unless noted, public welcome. 9:30 a.m. Annex Building

### TUESDAYS

**Madison County Mental Health Local Advisory Council, Virginia City**  
Meeting the first Tuesday of each month from 4:30 - 6:30 p.m. in County Commissioner's conference room in Broadway Annex.

### Summer Reading Program, Ennis

Madison Valley Public Library. 11 a.m. - 12 p.m.

**Children's Story & Craft Time, Virginia City**  
Every Tuesday at 10:30 a.m. at the Thompson Hickman Library.

**Movie Night, Virginia City**  
Movie Night at the Thompson-Hickman Madison County Library Every OTHER Tuesday night at 7:00 p.m. Please call 406-843-5346 to find out what is playing!

### WEDNESDAYS

**Tennis, Ennis**  
9 a.m. til 2p.m., come play tennis at the Madison Meadows Golf Course. All levels welcome.

### Open Sew, Ennis

Open Sew with the Quilt Guild- open to the public from 2-5pm at Madison Valley Public Library

### Open Table Tennis, Pony

7 - 9 p.m. For all ages and skill levels - Two Tables At the Pony School Info @ 685-3481

### TOPS, Ennis

Weekly weigh-ins are at 8:30am Meetings at 9am. MVMC in downstairs conference room. Jeanne, 682-3299

**Books and Babies, Ennis**  
Madison Valley Public Library, 10:30 a.m. 682-7244

**Grief Support Group, Ennis**

Everyone welcome. Meets every Wednesday, 5:30 p.m. Madison Valley Baptist Church

### THURSDAYS

**MV Women's Club**  
FIRST THURS OF EA. MONTH  
NO meetings June, July or August.

### MV Manor Auxiliary Meeting, Ennis

SECOND THURS OF EA. MONTH

1 p.m., Madison Valley Manor SunRoom

### Sheridan Farmer's Market

4:30 - 6:30 pm at corner of Mill and Main.

### Children's Summer Reading Program, Sheridan

10 a.m. every Thursday. Summer's theme: "Every Hero Has a Story". Sheridan Library

### FRIDAYS

### Tennis, Ennis

9 a.m. til 2p.m., come play tennis at the Madison Meadows Golf Course. All levels welcome.

### Story Time, Ennis

Pre-K to Grade 2, 11 a.m. Madison Valley Public Library. 682-7244.

### Live Music, Ennis

Willie's Distillery hosts live music in the tasting room, 5:30 p.m.. See the weekly ad on this page for performers.

### Couples League, Ennis

Madison Meadows. 5 p.m. every Friday. Call pro shop for more info.

### SATURDAY

### Farmer's Market, Ennis

9 a.m. - 12 p.m., Sportsman's Lodge

### Farmer's Market, Twin Bridges

9 a.m. Main Street City Park

### FRIDAY-SATURDAY-SUNDAY

**Live Music - Norris**  
7 p.m. See the weekly ad on this page for weekly performers.

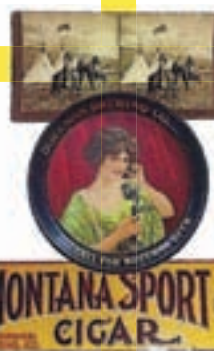
### David Perlstein

Always Buying Montana History

Specializing in Montana historical artifacts & memorabilia.

Advertising Signs • Ephemera • Maps  
• Brewerianas • Stereoviews  
• Photos • Yellowstone Park  
• Mining History

406-579-3500  
[davidperlstein@gmail.com](mailto:davidperlstein@gmail.com)  
[MONTANAPICKER.COM](http://MONTANAPICKER.COM)



**Flager Landscaping**  
Since 1993  
Dick & Ben Flager  
Alder, Mt

Residential Commercial  
Licensed & Insured

Trees, Irrigation, Shrubs, Edging, Walkways Border Design & Free Estimates

WE DO QUALITY WORK WITH QUALITY PRODUCTS.

Office 842-5330 - Fax 842-7282