

# The Madisonian.

THE LOCAL NEWS OF THE MADISON VALLEY, RUBY VALLEY AND SURROUNDING AREAS

Montana's Oldest Publishing Weekly Newspaper. Established 1873

75¢ | Volume 143, Issue 42

www.madisoniannews.com

August 13, 2015

## CONNECTING THE 'Y'

Abigail Dennis/The Madisonian  
The 'Y' intersection in Ennis is slated to receive sidewalks next year, but some business owners have concerns.



### MDT moves toward construction of sidewalks around Ennis intersection

Abigail Dennis  
THE MADISONIAN  
a.dennis@madisoniannews.com

On July 26, between 25 and 30 interested stakeholders met with Ennis town representatives, folks from the Montana Department of Transportation and people from the town's insurance company to learn more about the upcoming project to install sidewalks around the 'Y,' where MT Highway 287 and U.S. Highway 287 intersect in town.

"This project is moving forward," Ennis Mayor Becky Vujovich said. "We understand there's a lot of support for it, but we wanted to hear the concerns

form the (stakeholders)." The plans for the project are around 30 percent done, Vujovich said.

"The basic layout is done, but there have been some changes," she said. The plans include installing new sidewalks around the 'Y' from West of the Madison to the Madison Valley Medical Center on the east, Town Hall to Madison Foods on the west and from First Street downtown to the school.

#### Two sides of the issue

Initially, the plans included a crosswalk at the north end of the 'Y,' but Vujovich said the stakeholders brought forth

concerns about safety, so the crosswalk was scratched.

There will be a lighted crosswalk connecting the sidewalk in front of Town Hall to the school, across the highway. "They're putting in lights with a button the kids can push," she said. "It won't be a stoplight, but it will get the attention of drivers."

Darlene Pasley owns a business on the west side of the 'Y.' She is against the project for one major reason – safety.

"It's just not a good spot to try to put foot traffic," she said. "I'm afraid it's going to encourage young kids on bicycles to try to ride that and it's definitely not a good

place to have kids on bikes."

Pasley said the plan currently places the sidewalk right next to the road, and behind the cars parked at businesses.

"It's putting foot traffic behind parking," she said. "Big trucks are coming in and out and cars are backing up there. It's just dangerous. As far as sidewalks, well, I'm all for sidewalks and walkways, but in this case, there are safety concerns."

Darcel Cook, administrator at the Madison Valley Manor, which is located on the east side of the 'Y,' said she supports the project.

"I am excited about the

Turn to **SIDEWALK** on pg. 2



Abigail Dennis/The Madisonian  
Seyler Lane Bridge

### Ruby River access at Seyler Lane STREAM ACCESS QUESTION BACK IN MADISON COUNTY COURTHOUSE

Abigail Dennis  
THE MADISONIAN  
a.dennis@madisoniannews.com

It has been more than a year since the Supreme Court sent the lawsuit between Public Lands Access Association, Madison County and James Cox Kennedy back to Judge Tucker. The instructions from the Supreme Court were for Judge Tucker to define a width for the public right-of-way.

On Aug. 3, all the interested parties met at the Madison County Courthouse for a trial to determine that width. However, after a discrepancy about what witnesses were testifying, Judge Tucker postponed the trial until Sept. 21, to give the attorneys time to announce and depose their witnesses.

#### The background

"The question is, what is the public's right to use the area off the pavement of county roads," Susan Swimley, attorney for the Madison County Commissioners for the case,

explained. "What is the public's right in a county obtained prescriptive easement area?"

A county easement area includes the land on either side of a county road the county uses for road maintenance like snow removal, weed spraying and mowing, Swimley added. Though the case is now back in Madison County court, it first appeared before Judge Tucker in 2004, when the PLAA filed a lawsuit against Madison County concerning the issue of stream access at bridges in petitioned rights-of-way – now the case is specifically focusing on a bridge crossing the Ruby River on Seyler Lane, a prescriptive right-of-way that crosses private land owned by Kennedy, according to the Supreme Court case synopsis.

The lawsuit claimed "private property owners had erected fences in the public right-of-way along county roads" near the bridge, preventing the public from accessing the Ruby

Turn to **ACCESS** on pg. 2

### FATAL CRASH ON RUBY RIVER DRIVE

Abigail Dennis  
THE MADISONIAN  
a.dennis@madisoniannews.com

On Aug. 8 around 7 p.m., a Razor crash on Ruby River Drive resulted in the fatality of a Twin Bridges man.

Trevor Brown, 27, was driving the Razor, which is an off road vehicle, according to Missy Wood with the Madison County Sheriff's Office. There

was another man in the vehicle who sustained minor injuries.

"The driver sustained injuries that resulted in his death," Wood said. "I don't know if speed or alcohol were a factor."

The crash occurred between Laurin and Sheridan. In addition to Madison County Sheriff's Office, Montana Highway Patrol, the Ruby Valley Ambulance and the Alder Fire Department responded.

### BE AWARE: Scams on the rise, Madison County residents should be alert

Abigail Dennis  
THE MADISONIAN  
a.dennis@madisoniannews.com

"There's just about every way in the world that you can be targeted," said Madison County Sheriff Roger Thompson when asked about scams. "Phone number, email, address, social media – anywhere there is any personal

Around two weeks ago, Ennis resident Jan Smith received a letter in the mail with a check enclosed offering her \$3,950. Smith said she knew it was a scam for a few reasons.

"I read the letter – it came from South Africa," she said. "The grammar was all wrong. They wanted me to call a number to activate the

about her "big winnings."

Thompson said the kind of scam Smith was targeted with is a "typical one."

"Someone reaches out and says you've won something, but to get it, they need your personal information," Thompson said. "That one is going around right now."

Thompson said another popular scam right now is the offer for a cruise – instead of asking for money, the scammer requests a voided blank check copy, which would allow the scammer to get the victim's bank account number.

"They will use any imaginative way to get information," Thompson said.

#### Identifying scams

Identifying when you are being scammed has a lot to do with common sense.

"If it's free and too good to be true, then it is and it's probably a scam," Thompson said. "There's nothing free in this world."

Smith said she thinks many people are aware of the possibility they may be scammed

at some point, but she said she thinks it is a shame that many of the people who lose money to scammers are elderly.

"They come from a generation where you take people at their word and where you want to help people," she said. "I've read enough and seen enough on TV. To be skeptical."

Thompson said anyone who receives something they believe is a scam should reach out to the Madison County Sheriff's Office.

"If they aren't victimized, but they are suspicious about what they received, they can forward it to us," he said. "We collect information and we post scams on our Facebook page."

You can follow the Madison County Sheriff's Office on Facebook by following this link:  
<https://www.facebook.com/pages/Madison-County-Sheriffs-Office-Montana/501252533255753?fref=ts>

Turn to **SCAMS** on pg. 2



Photo courtesy Jan Smith  
The check Smith received.

information is potentially retrievable. You have to watch your Wi-Fi, your computer access and what information you hold there."

check, things like that."

In addition to receiving the letter, Smith said she has received phone calls

### CLIFF and WADE lakes Roadwork project on hold

Abigail Dennis  
THE MADISONIAN  
a.dennis@madisoniannews.com

Last October, Madison County commissioner Jim Hart received the promise of approximately \$550,000 from the Federal Land Access Program (FLAP) to complete a road project from Highway 287 to Highway 87 in the south Madison Valley – the road connects both highways with Forest Service land and the highly recreated Cliff and Wade lakes, Hart said.

"I haven't gotten a whole lot of information back and forth from FLAP," Hart said. "The hope is to get to work in 2016."

Initially, Hart thought the work would begin this spring after the snow melted, but FLAP has gone through a

personnel change, which Hart said may have contributed to the drawn out process.

When it comes through, the money will go to adding more gravel to the road, inserting culverts and adding signage.

Hart said the grant requires a county match of approximately \$70,000, which can be met with in-kind work. In-kind work means man power, equipment and materials, not necessarily funds, Hart explained.

#### In the meantime

Though the FLAP funding is on hold, Hart said the Forest Service completed road maintenance earlier this summer, and a Madison County road crew also worked on the road.

"The (Forest Service) did

Turn to **LAKES** on pg. 2

**RUBY VALLEY**  
Member FDIC  
P.O. Box 417 • Twin Bridges, MT 59754 (406) 684-5678  
P.O. Box 587 • Sheridan, MT 59749 (406) 842-5411

Welcome to THE MADISON COUNTY FAIR!  
GOOD LUCK 4-H & FFA participants!

TABLE OF CONTENTS

Local News	A3	Columns	B3
Opinion, Obits	A4	Comics/Games	B4
More News	A5	Classifieds/	
Lifestyle	B1	Public Notices	B5-B7
Health & Wellness	B2	Calendar	B12

Visit us online at [www.madisoniannews.com](http://www.madisoniannews.com)

**Conforming Mortgage Fixed Rates**

30 Years - .000% Points  
**3.875% Rate 3.976% APR**

15 Years - .000% Points  
**3.125% Rate 3.302% APR**

Rates subject to change without notice, APR calculation is based on a \$200,000.00 loan amount with a 1% loan origination fee, \$125.00 processing fee, \$295.00 document processing fee, Mers fee \$11.95, \$15.00 flood determination fee, \$4.00 transcript fee, 15 days of prepaid interest and \*discount point fee as stated above.

---

**If you haven't enrolled for E-Statement delivery, the time is now.**

Your statements will be made available to you at the touch of a button ... no more waiting for the mail and, most importantly, it's paperless!

Thank you for banking with [www.bankingonthefuture.com](http://www.bankingonthefuture.com)

---

AUTO LOANS

AS LOW AS

4.5%  
rate

4.879%  
APR

Rates subject to change without notice, APR calculation based on \$20,000.00 loan amount with a \$100.00 loan fee, 48 monthly payments of \$493.67 on approved credit.

FIRST MADISON VALLEY BANK

Member FDIC

Office: 406.682.4215 • Toll Free: 888.622.4215  
213 E. Main St • Ennis, MT 59729

WWW.BANKINGONTHEFUTURE.COM

HARDY DRYWALL

FULL SERVICE DRYWALL, PLASTER & STUCCO

406-596-3137

McAllister Inn

Steakhouse and Bar

---

Montana Fine Dining, Steaks, Seafood and Nightly Specials.

5566 Hwy 287 N • Lunch and Dinner

For reservations - 406-682-5000

Madison Valley Roofing

Formerly Savage Roofing

Roofing Year Round!

Fully insured  
FREE Estimates

Call 641-0059 or 682-7523

B&E

CONVENTIONAL FRAME HOMES  
COMMERCIAL  
REMODELS & ADDITIONS  
HAND-CRAFTED LOG HOMES

All phases of construction,  
design and consulting

CUSTOM BUILDING & DESIGN

e-mail: [bande@3rivers.net](mailto:bande@3rivers.net) | [www.bandeconstruction.com](http://www.bandeconstruction.com)  
brad bullock 581-4117 | ken evans 490-2758 | office 682-7942  
p.o. box 1444 Ennis, MT 59729

**LAKES from pg. 1**

maintenance and we followed up," he said. "When (our road crew) was up there doing work, they said there were over 200 vehicles that either met or went around them in a four hour period." That high volume of traffic is one of the reasons Hart applied for the FLAP money in the first place. "It gets a ton of traffic," he said. "Right now it's barely more than a lane and a half. And we've had to work hard to get it to that point." FLAP funding requires projects access federal land – the road connects the highway to the lakes, and also to

other portions of the forest.

Laurie Schmidt and her husband, Dave, have been the concessionaires for the three campgrounds by Cliff and Wade lakes for 26 years. "We basically manage the campground under a permit for the Forest Service," Schmidt said. "Tourism is expanding in Madison County and the lakes have been discovered." Schmidt said campground use stabilized from 2010 to 2012 after the country's economic downturn, but has been on the rise for the last two years. "But this year, it has been busier than before," she said. Schmidt also pointed out that there is a difference in campground use and day use.

"We've seen a triple usage in day use in the last three years, every day of the week," she

said. "It's as a result of the many rentals around the valley, Ennis, Island Park and Bozeman."



**ACCESS from pg. 1**

River, the synopsis stated. In 2012, Judge Tucker ruled public use of the county-obtained prescriptive easement along the Seyler Lane Bridge does not guarantee public use of the Ruby River from the bridge. Though the bridge is a prescriptive easement, meaning the public has a history of using the bridge, Judge Tucker ruled the public could continue to use the road but only the paved surface was public, according to Swimley. The adjacent right-of-way area could only be used by the county to perform maintenance on the road and bridge – anglers accessing the Ruby River would be considered trespassers if they left the pavement. In 2013, the PLAA appealed Judge Tucker's decision to the Montana Supreme Court on the

grounds it violated the scope of the county's prescriptive easement and that county prescriptive easement allows people to access all of the area that the county has used for maintenance. PLAA said that includes the Ruby River, since the state of Montana has walked down the river to inspect the bridge and banks of the river. The appeal was because of Judge Tucker's decision to deny the admission of recreational access to the river as evidence of obtaining a prescriptive easement, Swimley said. The PLAA also said the ruling violated Montana's 2009 Bridge Access Law, which upheld the public road right-of-way as the full width of the road and over the bridge to a stream's high-water mark. Kennedy and his lawyer, Peter Coffman, filed a cross-

appeal claiming both those laws, which allow public access to private land, are an unconstitutional taking of his property. In a five to two decision, the Supreme Court ruled in favor of the PLAA in January 2014, stating "the areas that are reasonably necessary to support and maintain Seyler Bridge, and to ensure the public's safe and convenient use of it, are included in the Seyler Lane public road right-of-way," according to the majority statement, written by Justice Mike Wheat. In the synopsis, the Supreme Court "determined that the public prescriptive right-of-way on Seyler Lane extends beyond the traveled way and includes such width as is reasonably necessary for the construction, maintenance and repair

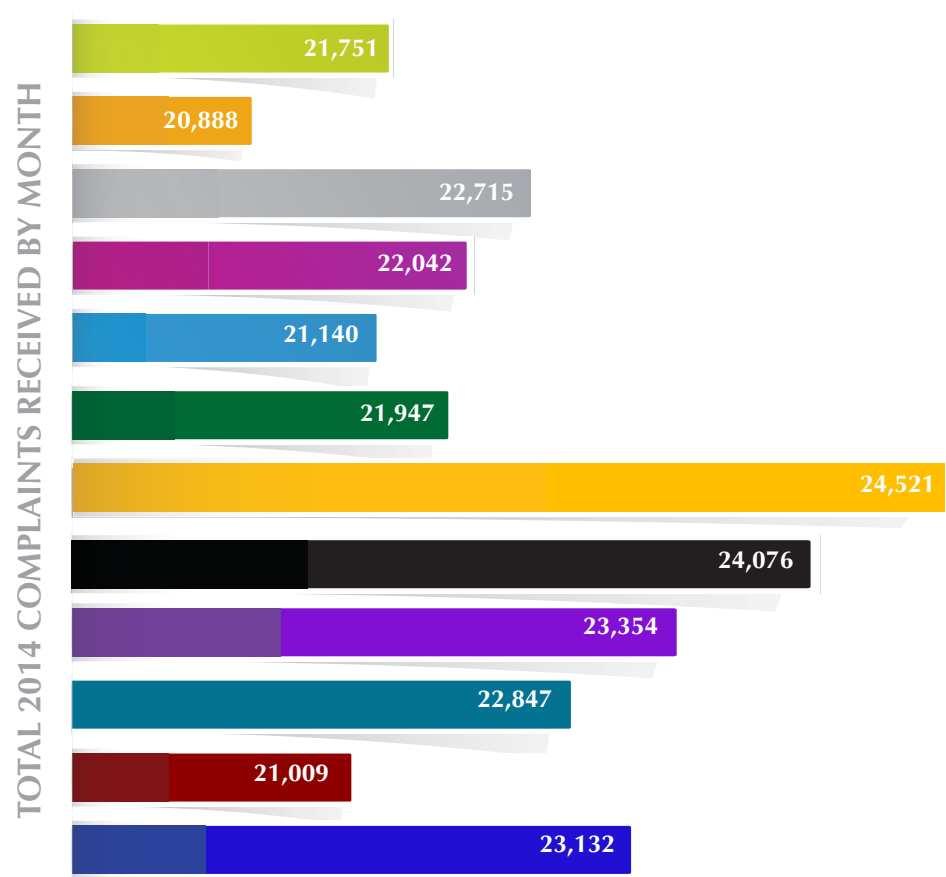
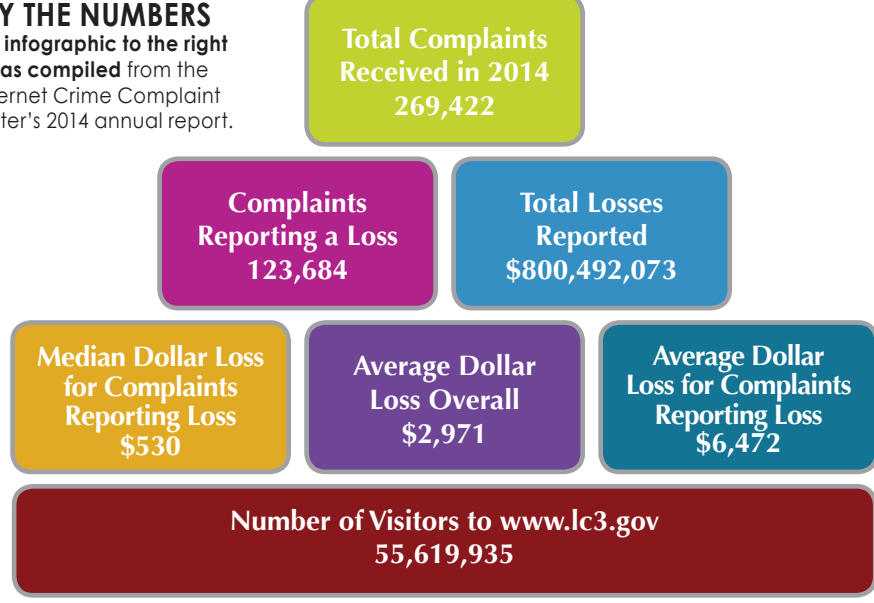
and for the public's safe and convenient use of the road." The Supreme Court then sent the decision back to Judge Tucker, ordering him to consider the evidence in the record and conduct whatever additional proceedings he considers necessary to establish a definite width of the public right-of-way, according to Supreme Court documents. It has been more than a year since the Supreme Court sent the case back to Judge Tucker, and on Aug. 3, all the interested parties met at the courthouse for a trial to determine the public right-of-way. However, after a discrepancy about witnesses, Judge Tucker postponed the trial until Sept. 21, to give the attorneys time to announce and depose their witnesses.

**SCAMS from pg. 1**

**Social media**  
According to Thompson, the rise of social media sites has created a rise in scams related to those sites. "Anywhere there is any personal information that can be collected by a scam artist is a potential angle for a scam," Thompson said. The Internet Crime Complaint Center, a partnership between the Federal Bureau of Investigation and the National White Collar Crime Center, receives "Internet related criminal complaints and to further research, develop and refer the criminal complaints to federal, state, local or international law enforcement and/or regulatory agencies for any investigation they deem to be appropriate," according to the IC3 website. In 2014, IC3 identified social media as a popular platform for criminals. "Over the last decade, the growth and popularity of social media has increased," the IC3 states in their 2014 report. "Social media has revolutionized the way people interact with others and has become an integral part of life for people of all ages." IC3 complaint data shows 12 percent of all the complaints submitted in 2014 had to do with social media. "Complaints involving social media have quadrupled over the last five years," the report states. "In most cases, victim's personal information was exploited through compromised accounts or social engineering." Thompson said any personal information put online has the potential to be retrieved by scammers.

**BY THE NUMBERS**

The infographic to the right was compiled from the Internet Crime Complaint Center's 2014 annual report.



**SIDEWALKS from pg. 1**

sidewalk project, in fact we helped with the matching funds for the grant," Cook said. "Right now it is very dangerous for our residents to go downtown, over to the school or Sugar High because of the lack of sidewalks or even asphalt paths that are within ADA standards. I feel this will be a benefit to our facility and the town. The sidewalk project will go a long way in showing we care about keeping our seniors, residents,

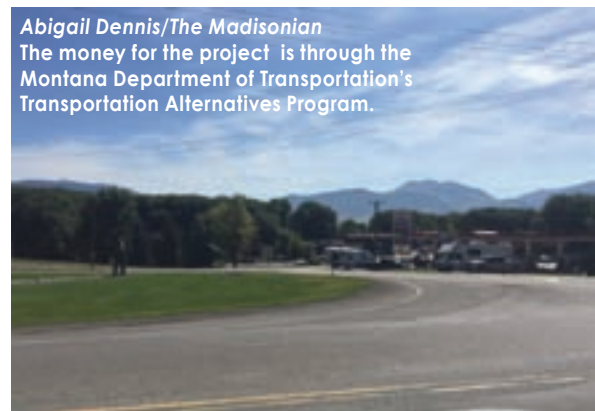
kids and visitors safe."

**The money**  
The project is being funded through MDT's Transportation Alternatives Program. Two years ago, the Ennis-based group Madison Byways raised funds to hire Great West Engineering to apply for a grant to cover the construction costs, Vujovich said. "We got the largest amount for a small town," she said. "\$380,000."

The grant fully finances the work in all MDT right-of-ways, but requires matching funds for work done out of the right-of-way. For this project, the

only section that is not an MDT right of way is the small strip between Shedhorn Sports and Ennis School – the stretch passes behind the Town Pump – Vujovich said. "Madison Byways raised \$5,000 for the matching funds," she said. "We also have no obligations on overruns." That means that the MDT is still responsible for paying for the project, even if it runs over budget. "From the beginning, the town has been clear we support this project but we cannot fund it," Vujovich said. "I think it's going to be a really good project." This is the third sidewalk project in Ennis that Madison Byways has had a hand in. The group first funded a sidewalk from Third Street downtown to the Lions Club Park, which was completed two years ago. Then, last year, the group completed the Golf Course Connection project, which links Ennis

Schools with the golf course. "There was virtually no foot traffic from the golf course to town," said Vujovich. "But it's heavily used now since the sidewalks went in." Madison County Planning Office director Charity Fechter said trails and sidewalks benefit communities. "Trails and sidewalks have been shown to retain value for properties. Speaking as a former transportation planner, it's very important you offer people a choice," she said. "Certainly walking and biking is a good choice." Speaking about the sidewalk project around the 'Y' specifically, Fechter said she thinks it is important. "It's along a highway," she said. "It's important for drivers to know where the pedestrians are supposed to be and vice versa. There are several businesses between the grocery store and town that would be much more accessible to pedestrians – cars don't buy stuff, people do."



# MORE NEWS:

## PRESIDENT BIRDSILL

### Local sheriffs deputy elected president of organization



Photo courtesy Gail Banks  
Sheriff's deputy Dan Birdsill is Madison County's K9 unit.

Abigail Dennis  
THE MADISONIAN  
a.dennis@madisoniannews.com

"It gets into your soul – into your blood."  
That is how Madison County sheriff's deputy Dan Birdsill feels about law enforcement. Birdsill, who has worked with the Madison County Sheriff's Office for around 32 years, was recently elected president of Montana Sheriffs and Peace Officers (MSPO).  
"MSPOA has been in existence for I don't know how many years," Birdsill said. "You could easily say several decades."  
According to Birdsill, MSPOA looks after the needs of sheriffs, deputies and other members of law enforcement agencies across the state.  
"We support legislation, hire a lobbying group to help us present bills and lobby for or against bills," he said. "We administer a lot of grants, like the (Strategic Traffic Enforcement Program) – through a grant, you get money to put officers on the streets specifically to look for traffic violations."  
Birdsill was born and raised in Sheridan. Now, he calls Alder home. He was interested in law enforcement since he was little, and jumped on the opportunity to apply to the

Madison County Sheriff's Office to be a reserve deputy.  
"It's one of those things that starts when you're a little boy," he said. "You want to be a policeman. A firefighter. A doctor. A mechanic. I always marveled at the idea of being a police officer."  
Birdsill served as a reserve officer for 10 years. When an opening as a deputy came about, he applied for it and received the job. He has also been a member of the MSPOA for around 22 years.  
"I served on the board for several years," he said. "And now, as president, I have a board of I think 17 members underneath the president; they are the executive board."  
The board elects the administration – first, Birdsill was elected as third vice president. Every year after that, he moved up in the ranks, to second vice president and first vice president until this year.  
"The timing worked out," he said. "A deputy can only be president every other year. Every other year is a legislative year, and that requires the attention of a sheriff, someone who can leave their office and doesn't answer to anyone. I was elected third vice president on the right year."  
Former Madison County Sheriff Dave Schenk served



Photo courtesy Dan Birdsill  
Sheriff Chris Hoffman (R) passes the presidency of the MSPOA to Dan Birdsill.

as MSPOA president years ago, according to current Sheriff Roger Thompson.  
"Out of 56 counties, there is only one president," Thompson said. "We've had excellent representation with first (Schulz) and now (Birdsill). MSPOA has always been a very big benefit to law enforcement across the state. They have worked on increasing benefits, improving law enforcement services and more."  
The presidency is a "huge honor," and one that excites Birdsill, just like his career in law enforcement.  
"The connection with the community, the people and the activities here is what is important," Birdsill said about his job. "You get to love this community, and I do love it with all my heart. Being able to help people, even though sometimes it seems inconsequential, it means a lot to people when they're in a jam. Nothing gives me greater satisfaction than being able to help people, from psychological help to medical health help to what be it."

## DISTRICT COURT ROUND UP

Abigail Dennis  
THE MADISONIAN  
a.dennis@madisoniannews.com

**Peraita pleads guilty**  
A Big Sky man appeared at the Madison County Courthouse on Aug. 10 before Judge Loren Tucker on charges of partner or family member assault.  
The state, represented by deputy county attorney Justin Ekwall, charged Jesse Edmundo Peraita with two counts of felony partner or family member assault (third or subsequent offense).  
According to a filed Information, the charges stem from incidents occurring between April 17 and June 5, 2015, where Peraita caused "reasonable apprehension of bodily injury" to his then-girlfriend.  
"The defendant has been convicted in other states for crimes similar to partner or family member assault on at least two prior occasions," the Information stated.  
The maximum penalty for partner or family member assault, a felony, is a fine not less than \$500 and not more than

\$50,000 and imprisonment for a term not less than 30 days and not more than five years, according to court documents.  
Peraita pleaded guilty to one of the counts, and Ekwall dropped the other count.  
Judge Tucker ordered a presentence investigation be completed in the case, and Peraita was remanded into the custody of the sheriff awaiting his sentencing hearing.  
**Pappas duo plead not guilty**  
Christine and Steven Pappa appeared at the Madison County Courthouse before Judge Loren Tucker on Aug. 10.  
Though C. Pappa and S. Pappa were charged individually by the state, represented by deputy county attorney Justin Ekwall, the court handled the cases in dual fashion.  
The state charged both C. Pappa and S. Pappa with one count each of criminal possession of dangerous drugs, a felony.  
The charges against the Pappas stem from an incident on or around April 14, 2015, where each Pappa was in pos-

session of a dangerous drug – the defendants "possessed amphetamines and/or methamphetamines included as schedule one hallucinogenic substance," according to court documents.  
Both defendants entered pleas of not guilty and were released on their own recognizance.  
**Nesbit changes plea**  
An Idaho woman appeared at the Madison County Courthouse before Judge Loren Tucker on Aug. 10 for a change of plea hearing.  
Crissy Jo Nesbit pleaded no contest to two charges – one count of negligent endangerment and another count of reckless driving, according to deputy county attorney Justin Ekwall.  
"No contest means that the defendant is not admitting that they are guilty, but they are conceding that the state could prove the charges beyond reasonable doubt if it went to trial," Ekwall said.  
The two charges Nesbit pleaded to on Aug. 10 were amended from three original charges.

Nesbit was originally charged with two counts of criminal child endangerment, felonies, and one count of criminal endangerment. The charges stemmed from a July 7, 2014, incident where Nesbit "purposely, knowingly or negligently caused substantial risk of death or serious bodily injury" to two children under the age of 14 and another child over 14 years old by "operating a motor vehicle under the influence of dangerous drugs," according to a filed Information.  
Nesbit pleaded not guilty to all three counts in September of last year.  
Following Nesbit's plea of no contest to the two amended charges, the court moved onto sentencing.  
Judge Tucker sentenced Nesbit to a deferred sentence of one year and a fine of \$300 for the charge of negligent endangerment, and gave her a deferred sentence of six months and \$200 in fines for the charge of reckless driving. Ekwall said the sentences will be served consecutively, which means Nesbit is on probation for 18 months total.

## MADISON VALLEY ARTS FESTIVAL

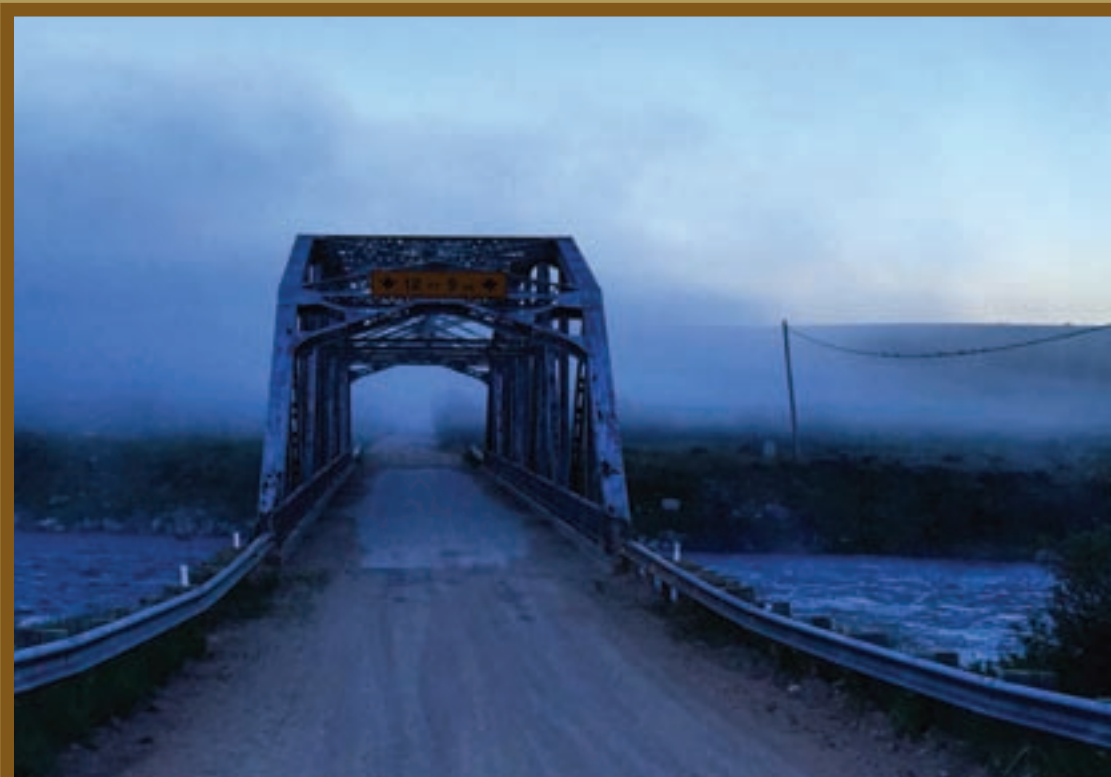
Abigail Dennis/The Madisonian  
Last weekend, on Aug. 8, the Ennis Arts Association hosted the 20th annual Madison Valley Arts Festival.



## How well do YOU know Madison County?

THIS WEEK'S CONTEST IS SPONSORED BY

Shovel & Spoon  
Sheridan, MT  
and  
Naple's Coffee  
Ennis, MT



Linda Shelton from Ennis knew this was the Madison River. Congrats, Linda!

We're shaking it up this week with a harder photo – quick! Name this bridge! Call 682-7755 with your guess.



# OPINION

## The Madisonian.

Established in 1873

(USPS 325-340)

Montana's Oldest Operating Weekly Newspaper

### Owners/Publishers:

Susanne Hill & Erin Leonard

Editor: Abigail Dennis

### Director of Sales & Marketing:

Susanne Hill

### Art Director: Erin Leonard

Circulation Manager: Kayla Way

Staff Writer/Projects Assistant: Caitlin Avey

### Contributors:

Gail Banks, Keith Axberg, Gen Pierce, Steve DiGiovanna, Art Kehler, Stacy Gatewood, Kelley Knack, Nancy Nesbit, Tammy Wham, Christopher Mumme, Matt Hill, Gerry Mooney

## ENNIS, MONTANA

### - Madisonian Editorial Policy -

Editorials are intended to acquaint our readers with the Editor's viewpoints on matters of public importance. Guest editorials and letters from readers (Letters to the Editor) reflect the opinion of the writers and do not necessarily reflect the opinion of the Editor or the staff of *The Madisonian*.

### - Press Release Policy -

•*The Madisonian* staff will give all press releases full consideration, but ultimately retains the authority to determine whether or not to publish releases.

•Content must be factual and objective.

•Content must not contain advertising language (such as "call now," "to buy tickets for," "now showing,") or include pricing.

•Items of a general business interest are appropriate for advertising—see advertising policy and current rates.

•Content must not be derogatory to competing companies or organizations.

•Content may only be submitted and published once.

•There are no guarantees that press releases will be published.

•*The Madisonian* may edit submissions for grammar and content.

•*The Madisonian* reserves the right to make all determinations relative to the above policy.

### - Letters to the Editor/Readers Speak Policy -

*The Madisonian* encourages the opinions of readers on public issues and matters of local concern. Letters must be close to 350 words. Please include the writer's name, address and phone number. *The Madisonian* reserves the right to edit content for grammar, good taste and libel. We also reserve the right to reject or delay publications.

Announcements and letters of a commercial nature will not appear in this column.

### - Display & Classified Advertising Policy -

*The Madisonian* accepts most advertising, but may turn away any advertisement for any reason. It is up to us to decide on placement and content acceptability.

The advertisements in this publication are not necessarily the opinion of or supported by *The Madisonian*.

Please note: Our client information is confidential.

### ~ Subscription Rates ~

In-State - \$35.00/1 year or \$60.00/2 years • Out-of-State - \$45.00/1 year or 75.00/2 years (e-Edition complimentary with print subscription) • \$30 - e-Edition only • \$40 - 6 mos. print/1 year e-Edition

Postmaster: Please, Send Address Changes to:  
The Madisonian, P.O. Box 365, Ennis, MT 59729

Phone 406-682-7755

Toll Free 1-888-238-7849

email: editor@madisoniannews.com

Hours of Operation:

Monday - Friday ~ 8:30-Noon & 1-5 - Unless Notified Otherwise

**NEWS & ADVERTISING  
DEADLINE**  
5 p.m. - Friday

## WE OFFER COMPLIMENTARY OBITUARIES

Guidelines: Must be 450 words or less and one photo. (Otherwise, it will be 25 cents per word thereafter)

Please call or email:  
682-7755 or  
editor@madisoniannews.com

## New Editor takes reins at *The Madisonian*

Susanne Hill  
Co-Publisher

It's official! Abigail Dennis has taken over as editor for *The Madisonian* and we couldn't be more excited.

Abigail studied journalism "on a whim", but ended up finding a true passion. She earned a Bachelor of Science in Journalism from Medill, Northwestern University and completed internships at *KC Magazine* and *KC Business*. She even spent a few months as a reporter in Cape Town, South Africa, working for the *Cape Times*. After graduating college, Abigail decided she

never wanted to see a city again.

Abigail grew up in Kansas City, Kansas, and spent her childhood summers exploring the west with her family, often ending up in the Madison Valley. When the position of staff reporter became available in Ennis, she jumped at the opportunity because she already knew she loved it here. While she thinks she twisted our arms to get her first reporter job here in Ennis, we are more convinced that we twisted hers. Either way, she joined our staff in October of 2013 and *The Madisonian* team hasn't been the same since. Abigail started as a staff reporter

and was quickly promoted to lead reporter, then associate editor and now editor. Erin and I frequently refer to Abigail as the best decision we have made so far here at *The Madisonian*.

Abigail thinks there is just something about how the communities in Madison County are that make her job what it is – there is always something interesting, something to celebrate and something to explore.

"We've been a tight-knit team at *The Madisonian* since I came on board as a reporter, but even more so now as editor," Abigail said. "I feel a huge sense of investment in our paper

and what we do for Madison County. That's the best part."

Many of you have had the pleasure to get to know Abigail. For those of you who haven't been so fortunate, we encourage you to reach out to her. She tries her best to be everywhere all the time, but as we all know, this is a big county and that just isn't possible—though she comes close some weeks.

Whether it is to congratulate her on her new role or to let her know what we can do better as your local news source, give her a call at 682-7755 or email her at editor@madisoniannews.com.

## Do not paint all of us with the same brush

### Landowner around Ruby Reservoir talks about public access

Dear Editor,

We have read with interest your reporting on the Ruby Reservoir over the past several weeks. We were made aware of the amount of "private" holdings on the east side of the reservoir a couple of years ago and began pursuing purchasing some of the lands. The land at the time was owned by four cousins, none of which lived in Montana, and it was our desire to gather up the private lands and work with the Bureau of Land Management to secure continued access by the public.

While we negotiated to the best of our ability, we were not able to secure the land on which most of the campground, boat launch, public restrooms, etc. is situated. What land we have been able to secure we have continued to keep open to the public and it is only posted, as per our attorney, to

insure us from being sued should something happen. The only exception is the property we are building our home on.

We have elected to only put our parcel at the far southern end of the property for sale (it is a small parcel that has not been traditionally used much by locals). As Montanans, we want to keep the reservoir open for use as it has always been. The reason we purchased the property is because of our many memories of generations past fishing at the Ruby, and we too would like to find solutions to keep it open for use.

Thank you for understanding our position – we hope this helps others not to paint all of us with the same brush.

Sincerely,  
Dennis and Brenda Dedman  
Ennis



## Feds steal from social security retirees

Dear Editor,

I have written many letters to the editor about social security going broke by 2020 and have received supporting letters from readers.

In the *Montana Standard* on July 26, 2015, an article appeared that stated the social security disability fund will run dry in 2016. This fund is filled with fraud, both from doctors' diagnoses and patients lying. It also includes payments to drug addicts that turn themselves in for rehab (\$800 per month).

The article also revealed a program that President Obama approves of, and one that has been used in the past to keep the disability payments being paid. An act that should be illegal and it has been used by the Congress.

Social security retirement funds have been taken out of that fund (called a much larger retirement fund) and paid into the disability fund. The American public was forced to pay into the social security retirement fund, which they have to wait to collect at 62 or 65. We were not told that we also must

pay into a disability fund as we have done, by act of Congress.

Social security retirement is supposed to have enough money to pay monthly checks until 2035, but if they are taking money out of the retirement fund to pay disability claims, are they also taking money out to pay for aid to dependent children? How can the retirement fund last until 2035 when it is being drained for other than the retirements?

Is it not a case of this Congress stealing funds that were meant for one thing and spending them illegally for other pro-

grams – and the retirees were not informed that it was happening?

We – the retirees – paid monthly payments to ensure we had a retirement and now the feds have been using that fund for a slush fund for other programs. We are also told we do not get a cost of living increase. That money should be repaid to the retirement fund, even if it means the congressional budget fund is used to repay our stolen money.

Bill Hanley  
Twin Bridges

# OBITUARIES

### Trevor Scott Brown

April 13, 1988 - August 8, 2015



Trevor Brown was born in Billings at St. Vincent's Hospital to Randy Brown and Laura Pearson. He was the youngest of three kids; he was our baby. The family moved to the Sheridan/Twin Bridges area shortly thereafter so his father could help his own father with what would eventually become a third generation family business.

Trev was blessed to grow up around lots of family, his par-

ents, his two siblings and also his paternal grandparents, an aunt and uncle, the Christensen cousins and numerous friends who became lifelong friends.

There were horses and go-carts to ride, and always lots of fun to be had. He loved his family. His dad was his everything. He loved to do things for his mom. He thought she worked too hard and wanted to make her life easier. Trevor loved to sing, and man could he sing. He sang at funerals and weddings. Oh how we wish we could hear his voice again. Trevor was a Falcon to the core, as was his dad. Twin Bridges was in his blood. He was extremely athletic. He played basketball and football in high school, but he loved football. He got a football scholarship to University of Montana Western. He did a semester there before deciding to go to work full time in the family business.

He worked side by side with his dad, which he had done every summer since the seventh grade. Trevor had no regrets leaving college behind, he loved what he did and he did it well. He grew Brown Plumbing into something he loved, which was Brown Plumbing and Excavating. He loved to play in the dirt. If there was one sentence to sum up Trevor it would be: work hard, play hard. Trevor lived life to the fullest. He was a doer. If he said he was going to do something, he did it. He had big dreams; he achieved many of them. He put his whole heart into everything he accomplished. He took pride in everything he did and in everything he owned. He loved his toys and he loved sharing them with his friends and family. He loved his MadCou Crew. He had such a tight knit group of friends. His smile lit up the room. He was vibrant, gener-

ous, dependable, fun, funny and full of life. He was beloved by many and we miss him terribly.

Trevor is survived by his parents, Randy and Laura; his two siblings Deverie (Jeremy) Roselott and their three kids, Kaleb, Jovenai and Jaxon and Brent Brown and his three kids, Madison, Christian and Brooklyn; his grandma Jean; numerous aunts, uncles and cousins; his girlfriend Sierra Smith; his MadCou Crew; and many cherished friends.

Funeral Services will be held Thursday, Aug. 13, at 10 a.m. at the Twin Bridges football field. Potluck reception to follow in the Twin Bridges School cafeteria. If anyone would like to bring anything, please contact Karen Perry at 684-5155.

In lieu of flowers, contributions may be made in Trevor's name to the Twin Bridges football team.

### Lyman "Leon" Obernolte

April 29, 1938 - August 5, 2015



Lyman "Leon" Obernolte, a quiet gentleman with humor and stories, passed away after a long illness.

Leon was born in Loma Linda, Calif., on April 29, 1938, to Lyman and Ethel Obernolte of Beaumont, Calif.

He leaves behind his wife of 58 years Eileen; daughter Theresa; four grandchildren, Michaela, Sean, Marissa

and Kayla; and two great-grandchildren, Eli and Everett. One daughter, Rena, passed away 17 months ago.

A celebration of Leon's life will be held at the Ennis Fire Hall on Aug. 15, 2015, at 1 p.m. In lieu of flowers, the family request donations to the National Wildlife Federation, P.O. Box 1583, Merrifield, Va., 22116-1583 or go to their website, www.nwf.org.

Get  
Results.

s.hill@  
madisoniannews.com

# & MORE NEWS:

## REMEMBERING WHAT'S IMPORTANT

*All readers,*

Madison County – and the Ruby Valley especially – suffered a huge loss last weekend. Trevor Brown, a MadCou boy through and through, died in a crash on Ruby River Drive (you can read more about it on A1).

I didn't know Trevor well, but considered him a friend. I knew him as a fun-loving, full-of-life man who had a quick smile and a great sense of humor. My thoughts go out to all his family and friends.

In rural areas like Madison County, I think we have a very unique relationship with tragedy. I received news of the crash via a text from sheriff's office first thing Sunday morning. This was the

first time that when I asked for the deceased's name, it was a friend. But that's bound to happen in a county with a small population – odds are, tragedy often hits close to home.

Erin Leonard, one of *The Madisionian's* owners, is the sixth generation of her family to live in Madison County.

"Part of living in a small area, we locals all have long lists of people we knew or were close to who died on us," Erin said when we talked Monday morning. "We get touched by tragedy in a different way."

Any time I hear news of a fatal crash, my heart sinks. It's always sad. Losing Trevor is sad, and unreal. I'm still convinced I'll see him roll through Ennis, or run

into him at the fair next weekend. We'll miss you, Trevor.

In light of tragedy, however, I think it's important to remember we have a lot of positive things going for us in the county too. I love writing about success stories. For this week's paper, I got to do just that. If you haven't read the article about the Miller Ruby Restoration Project, flip to page B1 and check it out. I'm incredibly impressed with the Miller family. With the guidance of the conservation district and cooperation and help from a multitude of others, they were able to stop putting Band Aids on a major problem, and actually find a solution.

If you haven't read the article, here's the low down: The Miller

family just completed a project that returned the Ruby River from a straight, ditched channel to a meandering river. The project was completed a few months ago, and the site already looks so natural. If you missed the tour and presentation last week, I recommend you reach out to Rebecca Ramsey (rubywatershed@gmail.com) and learn more about it.

The Miller project is the kind of story that renews my faith in the future of Madison County. It was the perfect cocktail for success – one part committed landowner, one part interested conservation district, many parts of helpful organizations and a whole lot of coordination. I love when my job helps me

discover exciting new places like the Miller Ranch outside of Alder. I'm pretty lucky. Any given week, I'm traveling all around the county. Last week, in addition to Alder, I spent time at Cliff and Wade lakes to get photos, had a lot of reporting to do in Ennis and hoofed it to Twin Bridges to get photos of the youth rodeo. Which, by the way, gave me very mixed emotions because it made me start thinking about the Madison County Fair.

The Madison County Fair is one of my favorite events of the year – last year, that week was one of the best all summer long. But this year, I have to miss most of the fair because I'm headed back to my home state of Kansas for a wed-

ding. I'm so excited to see my family and friends, but I'm disappointed my trip conflicts with fair time.

So here's my request to all of you: take photos of the fair! Our reporter, Caitlin, will be around all week to cover many events, but so much happens that we need you guys too. This year, we want to have a photo package in *The Madisionian* with YOUR photos of the fair. So get your cameras out, snap photos of all the 4-H kids with their animals and all the other interesting events and activities. Please send them to me by Monday, Aug. 17 at editor@madisoniannews.com.

*Abigail*

## RODEO TIME

### MADISON COUNTY FAIR KICKS OFF WITH YOUTH RODEO

On Aug. 9, kids from Madison County and surrounding areas traveled to Twin Bridges to compete in youth rodeo.



All photos Abigail Dennis/  
*The Madisionian*

Clockwise from bottom left

**JD Pickens competes** in the 8-10-year-old barrel racing division. The day of the rodeo was also JD's birthday.

**Amanda Russell from Ennis** competes in pole bending.

**In barrel racing for 7-year-olds and younger**, Harper Carr guides her horse.

**Ben Pickens and his horse** rush to the finish line after maneuvering through the barrels.



## VOLUNTEER SPOTLIGHT

### JOY DAY: Giving back to our community parks

Caitlin Avey  
*THE MADISONIAN*  
news@madisoniannews.com

"I grew up in community service – from the time I could wash a table or pick up a chair at the veterans dinner," said Joy Day.

Day was born and raised in Twin Bridges and still resides there today. Her father, Pete Novich, was heavily involved in the community when she was growing up and she attributes her love for community to him. "I love everything about community service and it's all thanks to him," Day said.

It helps that Day is a people person and enjoys talking to folks and getting involved.

"I love this town and I love our people," she said.

Although she has been successful in most projects, Day says she is most proud of her work with the parks at the fairgrounds.

"I have a passion for the parks," Day said. "I'm most proud of Riverside Park at the fairgrounds. That was all done on volunteerism, grants and donations."

Day was also involved with the imagining of the Lewis & Clark interpretive center, which is now home to a beautifully redone gazebo,

shrubs and plants, and the bronze Sacajawea statue.

Day and those who worked on the park projects were successful in getting Twin Bridges residents to pay a tax fee to keep the parks nice.

"I say 'we' because it takes a community," Day said.

The Twin Bridges Community Association and the Historical Association also play important roles in Day's life. Through the TBCA,

members work on continually improving the community, be it through work on the roads or planting flowers.

Day spends one day a week as a volunteer at the Historical Association Museum in town, a "labor of love" as she calls it.

"I love history and it's amazing how much stuff we have in the building," Day laughed.

The history association recently received a grant that will allow them to rebuild the metal frame on the top of the museum, which Day is happy about.

"It's very satisfying," she said. "There are highs and lows when it comes to community service and it's those highs that give me that passion."

When she's not busy with work or community service, Day says she enjoys spending time in her yard and gardening.

"I love flowers and love to garden, and I always joke that it's cheaper than a shrink," she exclaimed!



Joy Day

*Montana Heritage Commission Supports their local volunteers!*



THANK YOU.



**SLAM DUNK!**

Photos courtesy Ana Haggstrom

**TOP:** From L: Snaque Rollo, B.J. Deaver, Ana Haggstrom and Laura Rausch prepare to dunk Dr. R.D. Marks at the dunking booth last weekend.

**LEFT:** A soaked Dr. R.D. Marks finishes his round at the dunking booth.

# Ennis back to school lists

Submitted by Miranda Rae  
ENNIS SCHOOLS

The school year is just around the corner. Be sure to check out the supply lists below and make sure your kiddo has everything he or she needs to be successful this year!

## K-5 SUPPLY LISTS

- ### KINDERGARTEN
- 6 Glue Sticks
  - Gym Shoes with non-marking sole
  - One box of regular pencils- sharpened
  - Back pack to be brought daily and large enough to carry snow pants and boots.
  - A non-perishable snack to share (crackers, goldfish, etc.)
  - Supply box with a lid that flips open and is translucent so contents are in full view- for pencils, crayons, scissors, etc.
  - NO MECHANICAL PENCILS
  - Paint shirt
  - Crayons
  - 2 Boxes of tissues
  - Big Eraser
  - Water Bottle to be kept at school

- ### 1ST GRADE
- Box of #2 Pencils- sharpened: NO MECHANICAL PENCILS
  - Crayon box of 16
  - Supply Box
  - Fiskars Scissors (Blunt tip)
  - 1 Bottle of Elmer's Glue
  - Old T-shirt for messy projects
  - Gloves, mittens, hat, snow boots and pants
  - Backpack big enough for winter clothes
  - 2 boxes of tissues
  - 2 plastic 2-pocket folders
  - Erasers- including pencil top
  - 3 Glue Sticks
  - Gym Shoes with non-marking sole

- ### 2ND GRADE
- 40 #2 Pencils: NO MECHANICAL PENCILS
  - 1 small, handheld pencil sharpener
  - Backpack big enough for winter clothes

- 1 box of crayons
- 6 glue sticks
- Supply Box/Pencil Box
- Lots of Erasers- including pencil top erasers
- 2 box of tissues
- 1 pack loose leaf notebook paper, wide ruled
- 1 pair of scissors
- Ruler- includes centimeters and inches
- Paint Shirt/old adult t-shirt
- Gym shoes with non-marking sole

- ### 3RD GRADE
- #2 Pencils: NO MECHANICAL PENCILS
  - Colored Pencils
  - Pencil/Supply Box
  - Crayons
  - Scissors
  - Gym Shoes with non-marking sole
  - Loose-leaf notebook paper (wide ruled)
  - Backpack big enough for winter clothes
  - 3 2-pocket folders
  - Erasers- large & pencil top
  - 8 Glue sticks
  - 2 Bottles of Glue
  - Ruler
  - 2 Boxes of Tissues
  - Paint Shirt

- ### 4TH GRADE
- 2 packages loose leaf paper- wide ruled
  - 3 Folders
  - 8 Glue Sticks
  - Colored Ink Pens: 5 Different Colors
  - Gym Shoes with non-marking soles
  - Pencil/Supply Box
  - 20 Pencils- #2: NO MECHANICAL PENCILS
  - Colored Pencils
  - Extra erasers
  - Highlighters- 2 of any color
  - 3 Boxes of Tissues
  - Ruler- metric and inches

- ### 5TH GRADE
- Markers
  - Blue ink pens
  - Colored pencils
  - Compass

- 4 pocket folders
- Ruler- metric and inches
- Glue Stick
- #2 Pencils- NO MECHANICAL PENCILS
- Protractor
- PE Shoes & Clothing (5th graders have PE daily)
- Erasers
- Scissors
- Crayons
- Pencil/Supply Box
- 3 notebooks

## ENNIS JUNIOR HIGH SUPPLY LIST: GRADES 6-8 2015-2016

- #2 Pencils: If Mechanical, bring lots of extra lead
- Book Covers
- Ink Pens: Blue or Black
- 6 Notebooks that include a folder: One for each class
- 1 Package of Fine Tip Markers (8 count)
- Gym Shoes with Non-Marking Sole
- Gym Bag that includes one or two pairs of T-Shirts/Shorts, etc: Students will have PE class every day & are expected to "dress out".
- 3 Composition Notebooks
- Highlighters
- 2" 3-Ring Binder: Separate from any other binder/portfolio

**6TH & 7TH GRADERS** will take Band &/or Choir (8th Grade Optional): Students will need black & white dress clothes and nice shoes for Winter & Spring Performances. (All black or black on bottom, white on top)



**LOWEST PRICES OF THE SEASON!  
ON OUR REMAINING  
STOCK OF LAWNMOWERS!**

**sale**



**\$30 OFF THE  
REGULAR  
PRICE OF ALL  
WALK-BEHIND  
MOWERS IN  
STOCK**

**\$175 OFF  
THE REGULAR  
PRICE OF ALL  
TORO ZERO  
TURN MOWERS  
IN STOCK**



**BEHIND EVERY  
PROJECT IS A  
True Value.**

6 SUNRISE LOOP, ENNIS, MT 59729 | 682-4015

**OPENING AUGUST 20<sup>TH</sup>!**



Dr. Jeff Squire  
406-577-2380

222 E. Main St #1C  
Ennis, MT

Offering comprehensive eye exams, quality eyewear, and a variety of contact lens options for all ages.

Conveniently located in the Lone Elk Mall on Main Street!

Call today to schedule your annual eye exam!



We appreciate your patronage and will work hard to maintain your trust.



## Luciani named to president's list

Submitted by Raul Luciani

Nicolas Raul Luciani, son of Mr. and Mrs. Raul Luciani of McAllister, was named to the president's list by Dr. Troy Schoemaker, president of Pensacola Christian College, for academic achievement during the 2015 spring semester. This was a result

of earning an A average.

Pensacola Christian College is a liberal arts college enrolling students from every state in the United States and from around the world. Pensacola Christian College has an enrollment of approximately 4,700 students (undergraduate, graduate and seminary) and offers a variety of programs of study.

# KICKBALL TOURNAMENT



The Bieler team won the annual Sheridan Days kickball tournament. Eight teams participated in double elimination games. The Killer Kickball Kings were the runners up.

Photos courtesy Maria Bieler

*Beyond Words.*  
**YOUR future is OUR future.**

THE MADISONIAN. Advertise today. 682-7755

# RE/MAX

Nobody Sells More Real Estate Than RE/MAX!  
Call us at 406-682-5001 to find out why!



**Sportsman's Paradise - Cameron - \$119,000**  
21 +/- Acres, 576 +/- sf • one room + loft dry cabin • seasonal creek • heart of big game country • beautiful mountain views • near fishing and hunting



**Passamari "In Town" - Ennis - \$220,500**  
4 bd, 2 ba, 2518 +/- sf • open floor plan, priced to sell • fireplace, wetbar, hot tub • big rooms, mountain views • 5 min to golf, fishing, shopping



**Golf Course Home - Ennis - \$239,000**  
1 bd, 2 ba, 1332 +/- sf • open floor plan, 2 car attached garage • majestic mountain views • big rooms, mountain views • 5 min to hunting, fishing, shopping



**13 Redtail Hawk - McAllister - \$284,000**  
3bd, 2 ba, 1624 +/- sf • 15.51 +/- acres, landscaped • log home, covered deck, attached 2 car garage • 50' x 25' greenhouse, garden beds • hardwood floors, large master bath • strong water rights



**Centennial Drive - Pony - \$335,000**  
.778 acres • 2bd/2bth, 2400 sq ft • Pony creek borders property • plenty of space for entertaining • large wrap around decks • original Pony Jail included with property



**109 Moore's Creek Ct - Ennis - \$349,000**  
4+ bd, 3 ba, 3,024 +/- sf • .343 +/- acres, spectacular views • 2 car garage w/ additional 220 insulated shop • immaculately kept w/ upgraded finishes • oversized decks w/ irrigated, landscaped, fenced yard



**22 Ennis Lake Rd - Ennis - \$359,000**  
4bd, 2 ba, 3360 +/- sf • 6.08 +/- acres, landscaped • full finished daylight basement • creek, trees, outstanding views • fully fenced, detached garage/shop



**Bear Creek Loop - Cameron - \$485,000**  
2 bd, 2 ba, 2160 +/- sf • 45 +/- acres, newer carriage house • move right in, wide open floor plan • great value, low maintenance, motivated sellers • 3 car garage + storage, bring your horses • massive views, recreational paradise



**Old Stage Road - Whitehall - \$499,990**  
400 +/- acres • 3br, 3ba, 1280 +/- sf • access to public land • private, great value • small cattle or horse operation



**Deer Lane - Ennis - \$599,000**  
3 bd, 3 ba, 4948 +/- sf • 6.14 +/- acres, creek, very private • huge rooms fantastic views • close to town, fishing, golf • great horse property



**Longbranch Saloon - Ennis - \$629,000**  
bar/restaurant, building, fixtures, equipment • successful, locally owned • full beverage liquor license and gaming license • big dining room, casino area • central location, high tourist traffic



**Montana Log Home - Cameron - \$699,900**  
20 +/- acres, close to town • 4 bd 2 ba 3554 +/- sf, mountain views • granite counters, radiant floor heat • rustic elegance, open floor plan • 2 bedrooms are non conforming • huge fireplace, landscaped



**Hilgard Trail - Madison River Ranches - \$795,000**  
2 BR, 2BA, 3072 SF • 20 +/- acres with beautiful log home • 1.5 miles of private Madison River fishing access • Gated community • Spectacular views of the Madison Range & Madison River



**Gone West Ranch - Ennis - \$850,000**  
4 bd, 3 ba, 3793 +/- sf • 13.30 acres, huge mountain views • newer log home equipment barn • horse barn (6 stalls), loafing sheds, tack room • granite counters, stone fireplace, vaulted ceilings • close to hunting, fishing, riding, town



**Martini Ranch Log Home - Ennis - \$999,900**  
6 bd, 4 ba, 4 fireplaces, 5000 +/- sf • 18 +/- acres, stunning views • 2 master suites, with rock fireplaces • great room floor to ceiling windows • open floor plan, shop, corral



**Madison River Ranch - Cameron - \$2,175,000**  
5 bed 6 bath 4026 +/- sf • 20 +/- ac bordering forest service • spectacular log home/lodge • mountain views, massive stone fireplace • guest house, barn and garages



# REAL ESTATE CORNER

*Dive into the area's real estate options!*

## BE KIND TO YOUR SEPTIC!

Submitted by **Toni Bowen**  
ERA LANDMARK, ARROW  
REAL ESTATE

Homebuyers deciding between a rural homestead and city living often have to consider where their water utilities will originate. Do they want to live off a well and a septic system? Or would they rather plug into a municipal water and sewer line? These are important questions when choosing how and where you want to live.

**What Is a Septic System?**  
According to the EPA,



septic systems are underground wastewater treatment structures that use a combination of nature and time-tested technology to treat wastewater from household plumbing and are common in rural areas without centralized sewer systems.

### How Does A Septic System Work?

A typical septic system consists of a septic tank and a drainfield, or soil absorption field.

- All water runs out of your house from one main drainage pipe into a septic tank.
- The septic tank is a buried, water-tight container and its job is to hold the wastewater so solids can settle to the bottom (sludge), while the oil and grease floats to the top (scum).
- Compartments and a T-shaped outlet prevent the sludge and scum from leaving the tank and traveling

into the drainfield area.

- The liquid wastewater (effluent) then exits the tank into the drainfield. If overloaded with liquid, drainfield will flood, causing sewage to flow to the ground surface or create backups in toilets and sinks.
- The wastewater percolates into the soil, removing harmful coliform bacteria, viruses, and nutrients.

### Do's and Don'ts of your Septic System

- Do have your system inspected every 3 years by a licensed contractor; have the tank pumped, when necessary, generally every 3-5 years.
- Don't pour cooking grease, oil, chemicals or coffee grounds down the drain.
- Don't flush non-degradable products.
- Don't park or drive on your drainfield.
- Don't plant trees or shrubs too close to your drainfield.

- Do stagger use of water-generating appliances.
- Don't overuse garbage disposal. If you can pick it up with your hand, put it in the trash.

- Checking for lids and manhole covers.
- Contacting a septic inspector/pumper to locate it.

### Failure symptoms: Mind the signs!

A foul odor isn't always the first sign of trouble. Call a septic professional if you notice any of the following:

- Wastewater backing up into household drains
- Bright green, spongy grass on the drainfield, even during dry weather

- Pooling water or muddy soil around septic system or in your basement
- A strong odor around the septic tank and drainfield

One call to a septic professional could save you thousands of dollars! Contact the Madison County Sanitarian for more information about onsite wastewater practices and go to [http://madison.mt.gov/departments/sanitarian/septic/MC\\_Septic\\_System\\_Regs.pdf](http://madison.mt.gov/departments/sanitarian/septic/MC_Septic_System_Regs.pdf).

## Where's Melinda?



*Sometimes the more things "change" really the more they stay the same!!! Real Estate continues to be a good LONG term investment for most of us. You can live in it, stand on it, enjoy it..... And they aren't makin anymore of it! Find a good real estate investment today that fits your lifestyle and portfolio.*

- Just lowered - get away cabin in Pony - \$89,900
- Access to trout stocked lakes. - \$38,000
- Income producing Duplex - \$169,900
- Home on 160 acres with possible future development potential- \$950,000
- Single family or easy remodel to income producing in Virginia City- \$329,000

Call me today to find out more information on these ideas and many others that I have!

Melinda Merrill, Broker

An independently owned and operated franchise of BHH Affiliates, LLC. Berkshire Hathaway HomeServices and the Berkshire Hathaway HomeServices symbol are registered service marks of HomeServices of America, Inc.® Equal Housing Opportunity.

BERKSHIRE HATHAWAY  
HomeServices  
Montana Properties

406.596.4288 | MELINDA.MERRILL@BHSM.COM

205 Broadway, Virginia City  
\$329,000 • MLS#207245

This is a very spacious home that could be used as a rental or a bed and breakfast. The main home could be made into two living quarters. There is a one bedroom cabin along with another building that used to be a garage that would be a cute studio apartment. It could also easily be turned back into a two car garage. The main house has a large country kitchen and huge island. The large Master bedroom with walk-in-closet. The large front porch is covered. There is extra room for parking. Call to take look!

BERKSHIRE HATHAWAY  
HomeServices  
Montana Properties

Holly Driskill,  
Sales Associate



406.451.3527 | 101 E. MAIN STREET, ENNIS, MT 59729 | HOLLY.DRISKILL@BHSM.COM

BERKSHIRE HATHAWAY  
HomeServices  
Montana Properties



ERA Landmark  
ARROW REAL ESTATE

Offices in Bozeman, Big Sky, Livingston & Ennis

<p><b>N. MEADOW CREEK ROAD, MCALLISTER</b> \$499,900   #203105   TWO HOMES</p>	<p><b>Melinda Merrill</b> BROKER 596-4288</p>	<p><b>STEAMBATH DRIVE, ENNIS</b> \$495,000   #189907   BANK OWNED</p>	<p><b>Tim Beardsley</b> SALES PROFESSIONAL 581-7056</p>
<p>Two homes for the price of one, 3bd main home built in 1996, 3bd second home is 1920's historic with remodels, historic barn, beautifully landscaped 4± acres, irrigation ditch thru lush pasture, green house, great views and more</p>		<p>3,272± sf newer commercial building, highway accessible, bank owned and possible desirable financing to qualified buyer, common well for irrigation</p>	
<p><b>BROWNS BRIDGE ROAD, MELROSE</b> \$450,000   #207870   NEW LISTING</p>	<p><b>Michelle Van Dyke</b> BROKER 598-0805</p>	<p><b>SECOND STREET, ENNIS</b> \$225,000   #207760   NEW LISTING</p>	<p><b>Sara Johnson</b> BROKER 570-4249</p>
<p>3 bd, 2 bth 2,232± sf on the banks of Rock Creek in a meadow setting, built in 1997 w/ open floor plan, large country kitchen, &amp; wood fireplace, purchase options include reducing acreage to be conveyed w/ home to 4± acres priced at \$275,000</p>		<p>2bd, 2ba, 2,469± sf home in lower Ennis, minutes from the Madison River, large back deck to enjoy the mountain views, both levels of the home offer large living areas, two upstairs bedrooms and two additional rooms in the finished basement, beautiful landscaping</p>	
<p><b>W. FAGIN STREET, ENNIS</b> \$174,995   #201708   PRICE REDUCED</p>	<p><b>Tanya Matson</b> SALES PROFESSIONAL 580-6987</p>	<p><b>MAIN STREET, TWIN BRIDGES</b> \$68,000   #207932   NEW LISTING</p>	<p><b>Jack Leber</b> SALES PROFESSIONAL 596-7893</p>
<p>3 bd, 1 ba, 1,081±-sf, extensively remodeled and update from floor to ceiling, move in ready and no maintenance, many new features to interior and exterior including new sheetrock and paint, Pergo flooring, new shingles, added underground sprinklers and more</p>		<p>900± sf great location, includes 2 Rinnai heaters, original Hardwood, prime access to tourists, locals &amp; visitors heading to the surrounding mtn ranges or rivers, good on st parking, city allows residential or commercial</p>	

BHSM.COM

ENNIS: 406.682.5002 | SHERIDAN: 406.842.5650 | TWIN BRIDGES: 406.684.5686

© 2015 BHH Affiliates, LLC. An independently owned and operated franchise of BHH Affiliates, LLC. Berkshire Hathaway HomeServices and the Berkshire Hathaway HomeServices symbol are registered service marks of HomeServices of America, Inc.® Equal Housing Opportunity.



**CLOSE TO SCHOOLS** **JUST LISTED!**

Well-constructed, 3 BR/2 BA home on corner lot, 6 blocks from town. Fenced backyard and great views. Excellent rental history. 510 S Comley Way, Ennis. \$169,900 MLS #207992



**BEAUTIFUL CUSTOM HOME** **REDUCED!**

Architecturally designed 3,700 SF with 1,400 SF unfinished basement, 3 BR, 2 BA, on 5+ fenced acres with great views. Tremendous value. 25 Diamondback Road, Bull Wheel. \$567,000 (MLS# 203321)



**INCREDIBLE VIEWS** **NEW LISTING!**

From this 4 BR / 4 BA home on 20 acres just 5 miles from town but quite remote. Perfect for vacations or full-time living. 134 L&M Ranch Road, Ennis. \$425,000 (MLS #207662)



**MOUNTAIN HOME WITH VIEWS** **REDUCED!**

Comfortable, 3,634 SF home, 3 BR/3 BA, FP, family room + 2-car garage, horse stall & corrals on 20 acres. 99 Elk Hills Road, McAllister. \$599,000 (MLS #189543)



**OUTSTANDING WESTERN-STYLE HOME**

Top-quality 2,480 SF, 3 BR/2 BA, FP, gourmet kitchen, 3-car garage on 7 fenced acres. Good horse property & close to the river. 12 Stubborn Ox Lane, Bull Wheel. \$587,000 (MLS # 191065)



**READY TO MOVE IN** **REDUCED!**

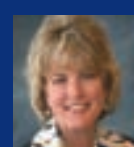
This well-built/maintained home of 1,760 SF, 3BR/2BA, has large deck, 2-car garage, and close to schools and downtown. 435 Beaverhead Street, Ennis. \$267,900 (MLS #206431)



**Don Bowen**  
ABR, Broker  
581-2991  
don@eralandmark.com



**Toni Bowen**  
ABR, Broker  
570-9233  
toni@eralandmark.com



**Robyn Erlenbush**  
CRB, Broker/Owner  
558-5052  
robyn@eralandmark.com



**Debbie Reilly-Richardson**  
Office Manager  
682-4290  
debbie@eralandmark.com

406-682-4290  
arrowreal.com

ERA Landmark Arrow Real Estate | 219 East Main Street, Ennis, MT 59729



**16 Killdeer Court  
Ennis, MT**



An independently owned and operated franchisee of BHH Affiliates, LLC. Berkshire Hathaway HomeServices and the Berkshire Hathaway HomeServices symbol are registered service marks of HomeServices of America, Inc. ® Equal Housing Opportunity.



**Rikki Dilschneider**  
-BROKER-

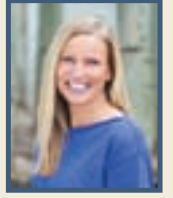
This Sundance style and Energy Star Rated 3 bed, 3 bath home featuring sustainable materials such as reclaimed wood, stained concrete floors, metal roof, SIPS panels, alder for all windows/doors is the "greenest" home on the market. The great room with exposed trusses & gas fire place is framed with windows taking in the picturesque mountain view and mature landscaping. The kitchen is open with quartz counters and island. Restoration Hardware lighting, copper sinks, & green house. 1.5+/- acres borders common area for added privacy.

**\$420,000**  
MLS#199923



**BERKSHIRE HATHAWAY**  
HomeServices  
Montana Properties

**406-581-5155**  
rikki.dilschneider@gmail.com  
101 E. Main Street,  
Ennis, MT 59729



**UNIQUE COMMERCIAL PROPERTY • PRICED TO SELL \$165,000 • MLS# 207777**

**NEW LISTING**



*Rare find.* a commercial property in a great location with no covenants. Located just a couple of miles out of Ennis, this 3.5+/- acre property has direct access from MT HWY 287. The property has a 36'x56' shop with power, water, and heat and septic as well as a 17'x76' mobile home that is currently rented. No covenants and an ideal location makes this is perfect property for someone looking for a commercial opportunity or for someone just wanting land with good access, stunning views and endless options.



An independently owned and operated franchisee of BHH Affiliates, LLC. Berkshire Hathaway HomeServices and the Berkshire Hathaway HomeServices symbol are registered service marks of HomeServices of America, Inc. ® Equal Housing Opportunity.



Tanya Matson  
Sales Associate

406.580.6987 | 101 E. MAIN STREET, ENNIS, MT 59729 | TANYA.MATSON@BHHSMT.COM



**CHRISTIE'S**  
INTERNATIONAL REAL ESTATE

**FOR SALE**

**33 West Palisades**

5.78 ACRES, 3B/3.5B, 3,850 SF | **MLS# 207434**

This beautiful log home with 1BR + Loft guest house epitomizes the Montana experience. Bordered on two sides by public land on the Madison River, this location near the Palisades invites one to grab a rod to fish out the front door. Large decks beckon one to grab a book and relax outside and soak up the views. Winter is just as great as you watch the migrating elk rest outside the cozy living room with wood burning fireplace.

All information contained herein is derived from sources deemed reliable, however, is not guaranteed by PureWest, Christie's International Real Estate, Managing Broker, Agents or Sellers.



**Dawn Myrvik**  
Broker  
406.579.1298



**Jessie Rice**  
Sales Associate  
406.581.1001



**Chris Murphy**  
Sales Associate  
406.570.1555

[www.PureWestProperties.com](http://www.PureWestProperties.com)

*The Real Estate Corner will appear every other week throughout the year.*



**OUR READERSHIP IS UP OVER 30%**

*New Advertisers get*

**25% OFF**

*display ads during the month of August!*

*Take us for a*

**TEST DRIVE!**

**CONTACT SUSANNE:  
596-0661 OR  
S.HILL@MADISONIANNEWS.COM**

# Elk shoulder season comment extended

Submitted by Tom Palmer

State wildlife officials extended comment an additional 18 days on a proposal to create guidelines for pre and post-season hunting opportunities to aid in the reduction of some elk populations.

The elk shoulder season guidelines would allow for developing and proposing elk hunting seasons to improve elk-harvest manage-

ment in specific locales.

Public comment was extended to Aug. 28, to allow additional time for review of the proposal. The Fish & Wildlife Commission meeting set for Oct. 8, was also moved from Kalispell to Helena to accommodate anticipated public interest. "Shoulder seasons add time for harvest to the existing general season," explained Quentin Kujala, the wildlife

bureau coordinator for Montana Fish, Wildlife and Parks in Helena. "Based on population sizes and elk harvest rates, both the general season and shoulder seasons will need to contribute significantly to overall harvest."

Kujala said there are expectations among the governor, lawmakers, and the public for FWP to manage elk at established population objectives, which were developed through a public process.

Today, 80 of 138 elk management units that have a stated objective and have been recently surveyed are currently over population objectives, Kujala said.

"For FWP to manage objectives it will require increased elk harvest in areas over objective," Kujala said. "That's what shoulder season can help to achieve, but only if hunting access to elk on private land, or isolated public land, is also increased during the general hunting season in many of these over-objective areas. That's a crucial consideration. Public hunting, during the general hunting season, is still the primary mechanism for wildlife population control in Montana."

The proposed guidelines include all currently available harvest tools, including season structure, types of licenses and permits, game damage hunts, game management seasons, and hunting season extensions.

As proposed, shoulder seasons could include any firearm season in the commission-approved hunting regulations that occurs outside the five-week general firearm season. Montana's general hunting season begins in late October and ends the Sunday after Thanksgiving Day.

Shoulder season hunting opportunities could occur between Aug. 15 and Feb. 15, and could include hunting for antlered and antlerless elk.

Measurable harvest criteria are also outlined to ensure a

uniform assessment of how shoulder seasons are performing by FWP and the public.

"Harvest by hunters in the general season and total harvest will be used to assess shoulder season effectiveness," Kujala said. "Estimates of elk population annual growth and annual harvest will routinely be made publicly available by FWP."

The proposed criteria stress that – in addition to shoulder seasons – hunter access during the general season must increase in many areas where elk populations exceed management objectives.

Kujala explained that FWP would not propose to maintain shoulder seasons in areas where a lack of hunting access during the general season results in elk movement to private lands. This sort of elk distribution can reduce elk presence and harvest on public lands and other private properties open to hunting access.

Kujala said a significant difference between shoulder seasons and other hunt options outside the general season is the wide availability of hunters and hunter opportunity. For instance, participation in shoulder seasons would not be limited to hunters drawn from the hunt roster.

Another difference is the evaluation process. Shoulder season criteria are applied post season instead of being used as entry requirements. There has to be at least a defined minimum amount of general season hunting, including reasonable hunting access, occurring and contributing to a sufficient overall harvest.

Comments will be taken until 5 p.m. on Aug. 28. For more information or to comment online visit the FWP website at fwp.mt.gov. Click "Submit Public Comments," then click "Hunting & Trapping." Or write to: FWP – Wildlife Division, Attn: Public Comment, P.O. Box 200701, Helena, MT 59620-0701.



**CROY construction**  
 Licensed - Insured - Professional  
 Custom Homes - Residential - Commercial  
**Gary Croy**  
 owner  
 406-581-3531 (cell) or 406-682-7236 (office)  
 P.O. Box 63 - Ennis, Montana  
 bid@3rivers.net

**HOME PARK**  
 Assisted Living  
 Brand new home • Safe and cozy  
 Comfortable, loving environment  
 Private rooms  
 596-3800 • 504 Ray Lane • Sheridan, Montana  
 homeparkassistedliving.com

**South West Septic**  
 Locally Owned & Operated  
**Portable Toilet Rentals**  
 They say the early bird gets the worm. As winter draws to a near and the Spring Cleaning & Construction season gets under way, we want to make sure your order gets in before our reservations fill up.  
 Call (406)842-7854 to place your order.  
 Don't delay! With so many weddings, graduation parties and Memorial Day right around the corner, South West Septic wants to make sure you are taken care of. **Call us today!**  
 WWW.SWSMT.COM • swsmt@hotmail.com  
 Ennis 682-7854 • Sheridan 842-7854 • Cell 596-7854

**DOLPH CONSTRUCTION**  
 DENNIS K. DOLPH & DAN MAGER  
 Master Carpenters  
 Custom Framing  
 Remodeling  
 Additions  
 New Construction  
 Log Homes  
 Cell (406) 539-7553 or (406) 531-0085  
 dolphdennis@yahoo.com  
 OVER 36 YEARS EXPERIENCE Licensed & Insured

*Building & Maintaining Madison County*  
**CM Construction**  
 Licensed & Insured  
 Chris Striegel - Cameron, MT  
 Cell 805-458-9178  
 Construction-New & Remodel  
 Home & Yard Maintenance

Insurance rates going up? Are you curious whether you could be saving money? Call us....we'll do the shopping for you!  
 Dean Derby Insurance Agency – 406-556-0893  
 Farm/Ranch. Autos. Home. Business.

**Sherwood Swanson Drywall Inc.**  
 Hanging Custom Textures  
 Finishing Painting  
 Office: (406)682-5438 Cell: (406)599-3524

**Pro-Vac Chimney Sweeps**  
 All Sweeps CSIA certified.  
**CLEANING SPECIAL!**  
**\$10 OFF Any System**  
 Additional \$20 OFF for Two Systems  
 Ask about our duct cleaning special pricing  
 Offer good through 8/31/15. Coupon must be presented at time of service.  
 Call us Now!  
 www.provac-chimney-sweeps.com  
 406-599-4919

**BARNEY CONSTRUCTION, INC.**  
 WHEN QUALITY COUNTS.  
 Residential Contracting  
 406-581-9388  
 barneyconstruction@yahoo.com

**BATS R Us**  
 ALPINE ANIMAL DAMAGE CONTROL  
 Live Trapping & Relocation  
 Squirrels - Skunks - Birds - Raccoons - Snakes  
 Bats - Beavers - Coyotes - Opossums - Otters  
 Odor Remediation - Attics & Crawl Spaces  
 Bruce Bartow (208) 521-4235

**Madison Valley Plumbing & Heating**  
 Serving Madison County for over 30 years  
 • New Construction  
 • Remodels  
 • Service Work  
 • Winterization  
 Jerry Singleton  
 Master Plumber #811  
 Phone: 406-682-7913  
 P.O. Box 1115 • mvp@3rivers.net • Ennis, MT 59729

The Madison County Fair Livestock Sales Committee extends an invitation to the 4H/FFA Barbeque and Livestock Sale Saturday, August 15th, 2015 at the Madison Co. fairgrounds. The BBQ begins at noon followed by the Livestock Sale at 2:00 pm  
**4H and FFA Livestock Members thank the following 2014 BUYERS for their continued support.**

ALDER	Boyd Angus Ranch Mule Mtn. Ranch Roger's Telephone and Repair Ruby River Ranch Snowcrest Ranch	ENNIS	Croy Construction Inc. D & D Auto Funston, Leif & Julie High Caliber Concrete Jumping Horse Ranch Madison Valley Garden Ranch McKitrick, Melvin Quarter Circle I Tezak, Tony & Connie	SILVER STAR	Ranch Resources Ruby Glen Homes Silver Springs Ranch H Double C Hoyt, Mark
BELGRADE	AquaTech Gallatin Valley Irrigation Moodie Implement Stockman Bank - Belgrade	FAIRFIELD	3 Rivers Communications	THREE FORKS	Cederberg, Daryn & Kass Chuteside Veterinary Service Circle S Seeds Headwaters Livestock Co.
BIG SKY	Yellowstone Club Operations	HARRISON	Clark Custom Stacking Harrison Elevator Sitz Angus Ranch	TOWNSEND	Watson Irrigation
BOULDER	Tom Carey Cattle Co	HELENA	Rocky Mountain Contractors	TWIN BRIDGES	Ashcraft Ranch Beaverhead Ranch Bradley Livestock Bradley Livestock Broksle Hay & Cattle Hamilton Ranches Ladder Canyon Ranch Mountainview Vet Service Pancost Fencing Ruby Valley National Bank Talon Ranch Town, Karen
BOZEMAN	Kenyon Noble Lumber	MANHATTAN	Churchill Equipment Danhof Chevrolet Inc.	VIRGINIA CITY	Gravel Bar
BUTTE	Ranchland Packing Remax of Butte	McALLISTER	Schutts, Alan Spanish Q Ranch	WHITEHALL	A&W Whitehall Al Solutions Arrowhead Reclamation Bieber, William Bowman Appliance/Clays -n- Calico Fredrickson, Dorothy Gnerer Angus Golden Sunlight Mine High Country Ag Marketing Jefferson IGA Johnson Fencing Merkel Engineering Rocky Mountain Bank Smith & Sons Construction Smith Ranch Smith Supply Inc. Split Diamond Ranch
CAMERON	Chief Croy Construction Sun Ranch	NEW YORK	Beattie, Dick & Diana Wood, Jim & Twink		
CARDWELL	Armstrong Angus Glaus Ranch Harrington Surgical Supply	NORRIS	AM Welles Brush, Jerry & Jolene Frontier Rustic Designs Jackson, Steve & Deani Norris Filter Service		
DELL	Dell Mercantile L&S Meats	PHILIPSBURG	Mammoth, LLC		
DILLON	American Equity Exchange, Inc. Dillon Jaycees Dillon Murdochs Frontline Ag Jerry Wessel's Tire Center Lakeland Feed Supply Pivots Plus, LLC R.E. Miller & Sons Reminise Angus Rocky Mountain Supply - Dillon Shepherds Garage Shuett Farms / Lazy TP State Bank & Trust Co. Stockman Bank - Dillon Suenram, Andy & Peri	PONY	Hollowtop Ranch JODI Land Co		
		RAMSEY	Montana Livestock Auction Inc.		
		SHERIDAN	Allhands Auto Clinic Andy's Service Gilman IH Cattle Co. Morse Land Co. Peterson Ranch		

**ENNIS MEALS ON WHEELS**  
 TUESDAY THROUGH FRIDAY  
 11:30 AM - 1 PM  
 MADISON VALLEY MANOR

**WEDNESDAY, AUGUST 12:**  
 SAUSAGE & BEAN GUMBO OVER SWEET POTATOES, GREEN SALAD, PEACHES OVER POUND CAKE

**THURSDAY, AUGUST 13:**  
 ALFREDO SPINACH TORTELLINI, GARLIC BREAD, HONEY SPICE BREAD

**FRIDAY, AUGUST 14:**  
 MOCK FILET, ROASTED POTATOES, CREAM CORN, PINAPPLE UPSIDE DOWN CAKE

**TUESDAY, AUGUST 18:**  
 CHIX DRUM, BAKED POTATO, BROCCOLI, LEMON BLUEBERRY BREAD

**WEDNESDAY, AUGUST 19:**  
 SPAGHETTI, MEATBALLS, SPINACH, GARLIC BREAD, CARROT CAKE

# DeGel commended for service to our country

Submitted by Women for Veterans Auxiliary

Joe DeGel of the Ruby Valley has served extensively in the U.S. Army. He graduated from Ennis High School in 1981 and joined the Army that same year as an infantryman. He served with the Airborne and Light Infantry from 1981 through 1985. In 1987 he married Karen Henke and they have three children: Katie, Dawne and Tony. He joined the Army Reserves in 2004. In 2007 and 2008, he volunteered for deployment to Iraq where he was assigned as a combat medic serving with Special Operations, 10TH MTN, 101ST ABN and

Civil Affairs. Currently with the Army Reserves, DeGel is a Sergeant First Class, assigned as the First Sergeant for the 4225th USAH at Fort Harrison. DeGel enjoys training youth to be tough enough to meet the challenges ahead of them. DeGel's son Tony is also in the Army. He is training to be a helicopter pilot.

Women for Veterans Auxiliary members represent friends and community in commending DeGel for serving our country.

SSG DeGel on a mission with two loyal, hardworking Iraqi soldiers in May 2008.



**SOUTHMONT FORM & FINISH**  
**FULL SERVICE CONCRETE CONTRACTOR**

- Pump Truck Service • Ground Heater Rental
- Footings, Walls, Slabs • 60' Boom Truck Rental
- Commercial & Residential Concrete
- Sprayed Foundation Coating & Waterproofing
- Decorative/Custom Concrete/Stamped & Overlay

FREE ESTIMATES - Licensed & Insured  
**\*Serving All of Southwestern Montana\***

Mick & Suzanne Hubner - Bob Hubner  
 Mob.: 406-925-1864 ~ Phone: 406-682-7253 ~ Fax: 406-682-5425  
 e-mail: hubner@3rivers.net - Ennis, Montana

**Treasure State Shuttles**

Kelley Knack 406-579-5442  
 Marilyn Jenkins 406-581-6759  
 skknack22@gmail.com  
 PO Box 52, Ennis, MT 59729  
 24/7/365

## STATEWIDE CLASSIFIED AD NETWORK

### EDUCATION / INSTRUCTION

**TRUCK DRIVER TRAINING.** Complete programs, refresher courses, rent equipment for CDL, Job Placement Assistance. Financial assistance for qualified students. SAGE Technical Services, Billings/Missoula. 1-800-545-4546. #295

### HELP WANTED

**Farm help wanted,** Fergus County. Includes grain, fencing, clean-up, cattle work, maintenance. Drivers license, riding ability required. Tobacco-free workplace. Email resume to sagebrush1900@gmail.com #270

**Career opportunity** with Montana Livestock Ag Credit. Requires an agriculture background and bachelor degree. If interested visit us @ ag-credit.com or call 1-800-332-3405. #262

**WANTED—** Experienced accountant; CPA preferred. Call Darrel at Tade Accounting in Scobey, MT 406-487-2888. #296

**HIGH-TECH CAREER** with U.S. Navy. Elite tech training w/great pay, benefits, vacation, \$\$ for school. HS grads ages 17-34. Call Mon-Fri (877) 475-6289, or jobs\_seattle@navy.mil #297

**NAVY RESERVE HIRING** in all fields. Serve part-time. Paid training & potential sign-on bonus. Great benefits. \$ for school. Call Mon-Fri (800) 887-0952, or jobs\_seattle@navy.mil #298

**HANDS-ON EXPERIENCE** Paid training with U.S. Navy. Good pay, medical/dental, vacation, great career. HS grads ages 17-34. Call Mon-Fri (877) 475-6289, or jobs\_seattle@navy.mil #299

**NAVY RESERVE** Serve part-time. No military exp needed. Paid training & potential sign-on bonus. Great benefits. Retirement. Call Mon-Fri (800) 887-0952, or jobs\_seattle@navy.mil #300

**THE NAVY IS HIRING** Top-notch training, medical/dental, 30 days' vacation/yr, \$\$ for school. HS grads ages 17-34. Call Mon-Fri (877) 475-6289, or jobs\_seattle@navy.mil #301

### FOR SALE

**FOR SALE SPORTS CAR** 1969 Mustang Convertible Survivor, 351-4, M Code, original black paint, deluxe interior, automatic, Always garaged, no rust ever. Build sheet, Marti Report. \$39,999/obo. 802-349-4212 #278

**For Sale a 1952 GMC Fire Truck.** Very cool truck! Siren is terrific and fun! Once used by the Chester Volunteer Fire Department. Call (406) 301-3447.

#265  
**NEW HOME SUMMER BLOWOUT!!** Single Wides, Double Wides & Modular Homes at Clearance Prices!! Modular Homes starting at \$79,500 - Tape & Texture Throughout, Oak Cabinets, Glamour Bath & Much More. 16 x 80 Singlewides - Tape & Texture Throughout & Oak Cabinets starting at \$45,900. Elite Homes - Call Troy at 406-696-6282 OR Jason at 406-855-2279. #263

**Custom Log Home Packages.** Our patented log building system eliminates settling problems and saves money. Call Nordique Log Homes, Swan Valley, Montana: 406-754-5647. Email: info@nordiqueloghomes.com #302

**Authentic Timber Framed Barns.** Residential-Commercial-Storefronts. Design-Build since 1990. Authentic Handcrafted, Pegged Frames Installed, Starting at \$18/SF. Traditional Turnkey Barns From \$40/SF. Built to Last for Generations. 406-581-3014 or email brett@bitterrootgroup.com www.bitterroottimberframes.com #303

### MORTGAGES / CONTRACTS

**EQUITY LOANS ON NON-OWNER OCCUPIED MONTANA REAL ESTATE.** We also buy Notes & Mortgages. Call Creative Finance & Investments @ 406-721-1444 or visit www.creative-finance.com #304

### BUSINESS OPPORTUNITIES

**Build your own business** by custom building with Heritage Homes! Our system saves time and protects your bottom line! www.hhofne.com Call Darrin at (800) 759-2782 #305

**MOUNTAIN VIEW TV & SATELLITE**

**ELECTRONIC SUPPLY**

(406) 682-7858  
 (406) 596-1513  
 mtvww@3rivers.net

Jim Forsberg  
 Mountain View TV & Satellite, Inc.  
 6 Sunrise Loop Ste B  
 Ennis, MT 59729

**MADISON MAINTENANCE**

**WE CAN HELP WITH ALMOST ANY TASK, JUST ASK!!**

- Cleaning
- Yard Maintenance
- Garbage Hauling
- Caretaking of Homes & Animals
- Various Errands

**LOCALLY OWNED & OPERATED PLEASE CALL 406-890-5046**

**Ridgeline Flooring**

Travis Lister  
 406-600-3891  
 ridgelineflooring@gmail.com  
 Installation & Repairs  
 Carpet, vinyl, wood, laminate, VCT, LVT tile  
 Licensed & Insured

Professional • Reliable • Honest

**FOR SALE**

**RIVERSIDE MOTEL & RV PARK**

2.43 ACRES  
 BROKERS PROTECTED  
 406-682-4240

**4 RIVERS CONCRETE PRODUCTS**

SHERIDAN, MT  
 WHITEHALL, MT

Quality Concrete - Premium Service

★ ★ ★ ★ ★

Front Discharge Trucks  
 Ready Mix Concrete  
 Washed Sand & Gravel

**842-5735 • 287-3728**

**RAVENS WATCH ~ ART SHOW ~**

**AUGUST 14-15-16**  
**FRIDAY 4-8 PM**  
**SATURDAY 10-6 PM**  
**SUNDAY 10-4 PM**

**SOME OF THE FINEST ARTISTS HAVE JOINED ME TO MAKE THIS SHOW SPECTACULAR! COME SEE US!**

**EL WESTERN LODGE & CABINS**  
**LOCATED IN CONFERENCE CENTER**  
**HWY 287 S., ENNIS, MT**

<b>CHERYL DEGROOT ~ JEWELRY</b> 	<b>LOREE WEST ~ POTTERY</b> 
<b>LIZ CHAPPIE ZOLLER ~ PAINTINGS</b> 	<b>ROWAN NYMAN ~ PHOTOGRAPHY</b> 
<b>CATHY TOOT ~ PAINTINGS</b> 	<b>BARBARA PIERCE ~ JEWELRY</b> 
<b>DG HOUSE ~ PAINTINGS</b> 	<b>CONTACT CATHY @ 406-682-7857 WWW.MUDDLED MOOSESTUDIO.COM</b>



# PHOTO OF THE WEEK

The Eagles are back. Look at their different head positions. The water is below them so they glance down at the water looking for fish. This is one of their favorite perches along a river in Madison County. Submitted by Tom Miller.

**Bale of Hay Saloon**  
**Colt Angell**  
 The Entertaining Cowboy Musician  
 Fri Aug 14th & Sat Aug 15th 9:30pm  
 Montana's Oldest Watering Hole - Virginia City  
[www.baleofhaysaloon.com](http://www.baleofhaysaloon.com)

**GET RESULTS.**  
 advertise in The Madisonian. call 682-7755 to make a plan.

**HUGE ABSOLUTE INVENTORY**  
**AUCTION**  
**JAMES RIVER EQUIPMENT LLC | John Deere Dealer**  
 WEST HWY 14 - HURON, SOUTH DAKOTA  
**AUGUST 25, 2015 | 9:30 AM CST**  
**ALL CATEGORIES OF FARM EQUIPMENT**  
 Tractors • Combines • Heads • Tillage-Haying Equip. & Misc.  
 Mowrey Auction Co. Milford, IL 815-889-4191 [www.mowreyauction.com](http://www.mowreyauction.com)  
 Wieman Land & Auction Co. Marion, SD 605-648-3111 [www.wiemanauktion.com](http://www.wiemanauktion.com)

**Bozeman Deaconess UROLOGICAL ASSOCIATES** NOW PROVIDING SERVICES IN ENNIS.

Gregory Pritham, MD      J. Bruce Robertson, MD      Bjorn Sauerwein, MD      Stewart Chumbley, FNP, BC

Bozeman Deaconess Urological Associates now provides services at Madison Valley Medical Center, at 305 N. Main St. Our urologists specialize in a full range of urological care including the treatment of prostate, kidney, adrenal, testicular and bladder cancers; sexual dysfunction; infections of the kidney, bladder, prostate and testes; male infertility; prostate disorders; kidney stones and urinary incontinence. Call Bozeman Deaconess Urological Associates at (406) 414-5300 to make an appointment.

(406) 414-5300 | [bdhg.org/urology](http://bdhg.org/urology)

**4 PAWS RESCUE PET OF THE WEEK**  
**ROCKY**  
 Hello everyone! Hey, I'm looking for a home. Had one once, but they got rid of me. Thankfully to the rescue. I'm a young guy, just turned a year old last month. All up to date on vaccinations, neutered, healthy and ready to rumble. I'm a boxer so I love to exercise, take long walks (need a leash tho) and a fenced yard, cause I can jump really high. I'm not good with cats or other dogs, I like to chase. So I'd do much better if I'm the only one. Please call Misty at 439-1405 if you'd like to see me. Sure like to see you soon. Rocky

SPONSORED BY:  
**Mountain View Veterinary**  
 (406)684-5831  
 2 Metully Lane | Twin Bridges, MT

**Get Results.** advertise in The Madisonian 406-682-7755

**MADISON COUNTY WEATHER**

**Thursday**  
 Partly cloudy with a 50 percent chance of showers and thunderstorms. Highs 80 to 90.

**Friday**  
 Partly cloudy with a 20 percent chance of showers and thunderstorms. Highs 75 to 85. Lows 45 to 60.

**Saturday**  
 Partly cloudy. Highs 70 to 80.

**Sunday**  
 Mostly clear. Lows 45 to 50. Highs 70 to 80.

**Monday**  
 Sunny. Highs 70 to 80.

*Quote of the Week:*  
**"Keep your face to the sunshine and you cannot see a shadow."**  
*Helen Keller*

**MADISON VALLEY AQUATIC CENTER**  
 a **BOLD** goal...  
 Together... let's be **BOLD**  
[mvacdivein.org](http://mvacdivein.org)  
**Get Results.**  
[s.hill@madisoniannews.com](mailto:s.hill@madisoniannews.com)  
**RALPH HAMLER**  
 LICENSED SANITARIAN  
 Septic Application & Design  
 Subdivision Applications  
 406-842-5788  
 Cell: 406-596-0437  
 Sheridan, MT  
[ralphhamler@gmail.com](mailto:ralphhamler@gmail.com)

**R&M Rentals Inc.**  
 Ron or Martha Noack  
 4995 US Hwy 287 N. ~ Ennis, MT 59729  
**Daily & Weekly Rentals**  
 Insurance Rentals  
**Economy & Midsize cars, SUV's**  
**Free Local Pickup**  
 Major Credit Cards Accepted  
 Email: [xpressrenta\\_car@yahoo.com](mailto:xpressrenta_car@yahoo.com)  
 Reservations Appreciated  
 Monday-Friday, 9-5pm • Saturday 9-1x pm  
 (closed for lunch 1-2 pm)  
**406.682.7039**  
 After Hours Call 406.570.8133

**Farm Dinner Season**

VISIT OUR WEBSITE FOR CURRENT DINNER DATES & TICKET PURCHASING

- "Salt of the Earth" Art Show (May 7th)
- Willow Spring Ranch (August 12)
- Wells Fargo ft. Montana Rose (June 20)
- Willie's Distillery (August 23rd)
- Sabo Ranch (July 2nd)
- Gallatin Growns (August 26)
- Cooper Hereford Ranch (July 26)
- Bozeman Brewing Co (Sept 20th)
- Gallatin Valley Botanical (August 4)
- AND MORE...

[WWW.SEASONALMONTANA.COM](http://WWW.SEASONALMONTANA.COM) f t i  
[melissa@seasonalmontana.com](mailto:melissa@seasonalmontana.com) • 303.319.4354



# GRASSROOTS'S MOVEMENT

Abigail Dennis/The Madisonian  
The Ruby River now meanders through the Miller Ranch, instead of shooting down a straight trench.

## Miller family completes a project restoring the Ruby River on their land

Abigail Dennis  
THE MADISONIAN  
a.dennis@madisoniannews.com

"Since I was a small boy tagging along with my dad, I thought, 'wouldn't it be great to see water in the old stream?'" said Rob Miller. "He just said, 'Robbie, it's better where it's at.' But he was from a different generation."

Miller addressed a crowd of nearly 100 people who gathered at his family ranch outside of Alder on Aug. 6. The event was a tour of the Ruby River that the Millers have turned

back into a natural stream channel. The stretch was straightened in the early 1900s and essentially turned into a trench, Miller said.

The project to restore the stream was seven years in the making. Ann Schwend, who was the Ruby Watershed Coordinator before the project was considered, said the trenched-out straight stretch of river was essentially a fire hose.

"It just shot down and there was a really sharp corner at the end, where they had to keep getting 310 permits," Schwend said.

Landowners must apply to

the conservation district for 310 permits when they want to do work in a waterway. In the Miller's case, they continually had to add riprap to the sharp corner to keep the bank from eroding.

"We said, it would be really, really great if you could come up with a way to fix the whole problem," Schwend said. "This project was really a result of thinking about the whole system."

And that is how the idea to restore the channel to a meandering stream was born.

"We started out by looking at old abandoned

channels," said David Sigler, a technical service provider with Spanish Peaks Engineering. "We wanted to find out what the river was shooting for."

After mapping out a winding path for the river to follow, it was time to get to work. The actual construction work involved trenching the new channel, and rebuilding the banks with sod and willows. Rough excavation started last October and was put on hold for the winter. Then work started up again and was completed by the end of March.

"We've made this a

sustainable system," Sigler said. "We found a natural starting place and we'll let (the river) find its own way from there."

The end result is already showing impressive changes, according to Sigler.

"It's amazing to think this was brand new a few months ago," he said to the group standing by the river. "It's a win for the livestock operation, the river and for the habitat."

Current Ruby Watershed Coordinator Rebecca Ramsey pointed out that this stretch of river is already showing a 30

percent difference in clarity, which she said is "huge."

"It used to be shallow and warm and fast running – not good for fish," Sigler explained.

Now the river winds its way through the landscape, where it is cooled by the shade from many trees.

"There's nice cover and it's cooler," Sigler said.

#### Joint effort

According to Ramsey, the majority of the project was funded by Miller Cattle Company, with assistance

Turn to RIVER on pg. B7



Abigail Dennis/The Madisonian  
During the tour of the project site, the group stopped to hear about the process from those involved.



Abigail Dennis/The Madisonian  
The Ruby River used to run through the Miller Ranch like a fire hose, but it has been rehabilitated and follows a natural path now.

# HEALTH & WELLNESS

## Tips to boost your family's energy for back-to-school season

Submitted by StatePoint

It is time to gear up for a new school year. That means buying supplies and clothes, coordinating schedules and adjusting to new routines.

All the preparations can leave you feeling drained, but with the proper fuel you can ensure your family has the energy needed to ace each day.

**Meal plan**

Kick off the year by creating

a meal plan, which will help you stay organized, maintain a good diet and avoid repeat trips to the store. To simplify shopping and preparation, put together a list of favorite meals and snacks; then group according to common ingredients. Use a dry erase calendar, spreadsheet or online template to plot out menus one week at a time. Then, draft a grocery list and stick to it. This

will help you pass up the chips and cookies for more energy-boosting options. When you arrive home, immediately wash and prep produce for the week to make it that much easier to make nutritious meals all week long.

**Start the day off right**

Wholesome breakfasts provide a pick-me-up in the morning and throughout the day. Squeeze some oranges for fresh juice and a vitamin C boost. You can make a pitcher each weekend to last several days. Serve with homemade granola bars for a satisfying start to the day. Smoothies are another easy breakfast.

**Mid-day motivation**

Prep power-packed lunches for school and work by including protein, fruits and vegetables in an assortment of tastes and textures. You can use a blender to quickly prepare all kinds of dips and nut butters. Try homemade hummus with cucumber slices and carrot sticks and a side of strawberries and grapes. Or create fun finger foods, such as a peanut butter and apple wrap,

or ants on a log – almond butter and raisins on a celery stick. Remember to stay hydrated. Water is fuel, and even mild dehydration can slow down body systems, resulting in fatigue. Carry a large container of water to drink throughout the day.

**Dinner delight**

Continue beneficial eating habits at dinner. Add extra vegetables to your menu with a squash cheese sauce for a new take on whole wheat macaroni and cheese. Or bake a wholesome pizza using fresh pesto or a white bean purée as the sauce. Instead of hitting the

couch after dinner, complement healthy eating by taking a walk with your family. Exercise provides a natural endorphin boost, giving you extra motivation to maintain healthy habits.

With a little planning, a busy schedule will not be an excuse for bad habits.



### Ruby Valley Medical Clinics



Dr. Roman Hendrickson



Dr. Molly Biehl





Dayna Leavens, CPNP



Katherine Tetrault, PA-C



Chris Hartsfield, APRN, FNP-BC



Drew Chambers, PA-C

**SERVICES OFFERED**

- Office Visits
- Well-Woman Exams
- DOT Physicals
- Sports Physicals
- Well-Child Check-Ups
- Life Insurance Exams
- Acute and Chronic Health Care

**ALSO PLEASED TO OFFER**

- Sliding Scale Program (based on income)
- Payment Plans
- Accepting Most Insurance including Medicare & Medicaid

[www.RubyValleyHospital.com](http://www.RubyValleyHospital.com)

The Ruby Valley Hospital is an equal opportunity provider




**20|Twenty Eyecare Services Include:**

- Vision & Eye Health Exams
- Children's Vision
- Latest Technology for Treatment of Eye Disease
- Contact Lenses
- Vision Therapy

**Come see our collection of over 20 designer frame brands.**

20 | TWENTY

522-8888

280 W Kagy Blvd, Suite B, Bozeman, MT.  
[www.20TwentyMT.com](http://www.20TwentyMT.com)

Most insurances accepted including VSP & EyeMed

To advertise Your Business

on the Health & Wellness Page

Call Susanne @ 682-7755

or email [s.hill@madisoniannews.com](mailto:s.hill@madisoniannews.com)

## MAC'S CHC PHARMACY

(406) 842-7434

317 Madison St  
Sheridan, MT

Monday - Friday  
9 am to 5:30 pm





## How to naturally prevent headaches

Submitted by StatePoint

Pain in your brain can be a real headache. To avoid getting hit with a doozy, consider these easy tips.

- Drink water. Dehydration causes headaches, and most Americans are not drinking enough water. Drink your eight

8 ounce cups of water every day to drastically lower your risk of getting a headache.

- Cut back on the coffee. Coffee is one of the largest headache triggers, but most people like to begin their days by drinking at least one cup. Instead, try some peppermint or ginger tea –

both of which you can also drink to cure a headache if it sneaks past your defenses.

- Relax. Stress is on the rise, according to the American Psychological Association. So it is no wonder we get headaches so often. Put aside time every day to do something

you enjoy. Some low-stress, rewarding options are taking a yoga class, volunteering at a charity or playing with a pet.

Headaches are not pleasant, but these prevention techniques will make your days better – not only by improving your health but by increasing your happiness.

## Never leave a child alone in a car Not Even for a Minute

Submitted by Jon Ebel  
DEPARTMENT OF PUBLIC HEALTH AND HUMAN SERVICES

The Montana Children's Trust Fund's is promoting the Not Even for a Minute campaign that reminds parents and caregivers to never leave children unattended in or around vehicles.

Left alone in a vehicle for even a short time, a child is in danger of heatstroke, dehydration, overheating, hyperthermia, injury, abduction and even death.

Department of Public Health and Human Services officials said no child should ever be put in that situation.

"There have been deaths and several close calls over the years in Montana, so it's something we all need to be vigilant about," said Montana Children's Trust Fund Director Jamey Petersen. National statistics as of July 27, 2015, show there have been 11 reported fatalities due to children being left in the car. In 2014, there were 32. On average, 38 children in the United States have died each year since 1998 from being left in a hot car. Temperatures in cars soar quickly, said Melissa Lavinder of the DPHHS Children's Trust Fund. "Even with a window

cracked, the temperature inside a car can reach very dangerous temperatures within minutes," she said. "When left in a hot vehicle, a young child's body temperature may increase three to five times as quickly as an adult. In these extreme conditions, children can die or suffer a permanent disability in a matter of minutes."

Believe it or not, routines and distractions have caused people to mistakenly leave children behind in cars. Below are further prevention tips.

- Make your child as visible as possible.
- Place your purse, briefcase or whatever is to be carried from the car in the back seat with your child to serve as an additional reason to check that area.
- Set a reminder on your cell phone or computer to be sure you dropped your child off at day care.
- Ask your childcare provider to call you if your child has not arrived as scheduled.
- Remember to

use drive-through convenience provided by banks, restaurants and other businesses.

- Pay at the pump at gas stations.

Tips to prevent trunk entrapment and other accidents:

- Teach your children the dangers of a car and let them know that it is not a toy or playground.
- Always lock your car, even at home, and remind your friends and neighbors to do the same. Unlocked cars pose a risk to children who are naturally curious.
- Always put your keys in a safe and secure place out of children's reach.
- Check pools, vehicles and car trunks immediately when a child is missing.

If you see an unattended child in a car, dial 911 immediately and follow the instructions that emergency personnel provide. If you would like to be involved in the Not Even for a Minute campaign, visit <http://dphhs.mt.gov/childrentrustfund/notevenforaminute.aspx>.

### Medicare Supplement Plans

We offer FREE assistance & information.  
For your personal consultation please call

**ENNIS**  
406-682-4002

**JACK W DAUGHERTY**  
**INSURANCE**  
A Financial Services, LLC.

**SHERIDAN**  
406-842-7400

Independent, Authorized Agent for  
**BlueCross BlueShield of Montana**

\*An Independent Licensee of the Blue Cross and Blue Shield Association\*



# COLUMNS



## HOLLOWTOP SMOKE SIGNALS

By Art Kehler  
FOR THE MADISONIAN

### Beartrap Canyon Grand Prix

Recalling the harrowing experience of surviving a vehicular hurricane

If last year is any indication, about 11 million nonresidents will visit our state this year. One day last week, while driving roundtrip from Harrison to Bozeman, I believe I encountered every one of those visitors. To say the traffic was worrisome would be akin to calling a grizzly bear a panda. Initially, I drove north from Harrison to Three Forks. The first thing I noticed was the extraordinary number of vehicles on the road. Even on that two-lane highway, the 70 mph speed limit was not fast enough. I watched



incredulously as cars zoomed past me on blind corners. Eventually, I got stuck behind a pickup truck pulling a large camper at 55 mph. In no time, motorists were backed up for a long distance. Because the oncoming traffic was also heavy, no one who valued life dared pass. Nonetheless, I knew it was just a matter of time until a fearless (brainless) thrill-seeker would throw caution to the wind. As the seconds ticked by, the tension became unbearable. Then, the fourth car back pulled out to pass. As he roared by, the driver's facial expression mimicked that of one those wackos that dive off towering cliffs in a flying squirrel suit. I watched aghast as the approaching cars' brake lights flashed on. At the last instant, the NASCAR wannabe swerved so sharply in front of the camper-pulling pickup that he nearly scraped its front bumper off. The pickup's driver then wisely pulled over to let the congestion go by and, I suspect, examine his Fruit of the Looms. Near Three Forks, I entered the freeway and headed for Bozeman. The traffic was beyond awful. Again, traveling at the 75 mph speed limit was considered dawdling. It felt as though I had been sucked into

an overpowering vehicular hurricane and was being swept to certain disaster. Sure enough, a motor home soon began to pass me. The operator, who obviously hadn't driven anything larger than a Mini Cooper coupe before, apparently lost sight of me in his rear view mirror. So, he began edging the humongous rolling residence into my lane – while it was still directly alongside my car! In yet another bowel-stirring scenario, I was forced to abandon the freeway and screech to a stop on the side of the road. Finally, I arrived at Wal-Mart. Having reached the eye of the storm, I was about to get a break from the hectic traffic – or so I thought. To my immeasurable irritation, the scourge of shoppers operated their shopping carts just like they drove their cars. Once, when a grossly overloaded cart was rammed past mine, I was pasted up against the side of the frozen food aisle freezers. Though I can't prove it, I'm pretty sure the culprit was the driver of the aforementioned motor home. Hoping to encounter less traffic on the way home, I took MT Highway 84 to Norris. Before long, I became a wholly unwilling participant in an impromptu Beartrap Canyon Grand Prix. Yet again, I was caught up in an automotive tempest and fairly propelled through the canyon's hairpin curves at maniacal speeds. Miraculously, I arrived in Norris in one piece. Finally, as Harrison came into view, I expressed heartfelt gratitude for being delivered from the vehicular hurricane. Additionally, I suddenly saw the wisdom of paying to have a drone deliver groceries to my door. At any rate, I may not leave the cloistered confines of Harrison again until winter.

©Art Kehler  
*Art lives in Harrison. His essays, stories and poetry have been published in newspapers, journals, literary magazines and online magazines.*



### Through the WINDOW OF THE ARCHIVES

By Evalyn Batten Johnson

Each of us has a legacy – it may be pressed between leaves of an old journal, or a scrapbook or hidden in a box somewhere in the cluttered basement ... and so it is with word and deeds though the writers and doers have departed, the acts they performed lives on in



the confines of the heart. I am going to bring to you at this time a Native American who graced our town in the 1930s. Her name was Wannush, but she was better known as Indian Mattie White Bear. Mattie was a Lemhi Shoshone, as was Sacajawea of the Lewis and Clark expedition. Every summer in those days, there was one family that came and camped out near the old slaughterhouse

## NATURAL Resource News

Dr. Dean Pearson  
RESEARCH ECOLOGIST, USFS-ROCKY MOUNTAIN RESEARCH STATION

### Weed impact rankings for western Montana grassland invaders

What is a manager to do when the number of weeds invading exceeds the resources available to combat them all? This is an ubiquitous problem in invasive plant management, and as every manager knows, the answer is triage. You do the best you can with what you have by prioritizing your target plants relative to your resources. The problem is that we often do not have sufficient data to effectively prioritize which species to target. Imagine how much easier this problem would be if you had a list that ranked the impact or damage being caused by every exotic

in your system. Imagine no more, the list is here – at least for one common habitat type in Montana - bluebunch wheatgrass grasslands. **Field study** Researchers from the Rocky Mountain Research Station, USFS laboratory in Missoula, surveyed 620 1-m<sup>2</sup> vegetation plots across 31 grasslands spread over 20,000 km<sup>2</sup> of bluebunch wheatgrass habitat in west-central Montana to quantify the invasiveness and impact of 48 exotic plants found within this system. These surveys targeted grasslands that were ≥1 ha, located near

potential sources of invasions like roads, but that had not been transformed through agriculture, development or extreme grazing. Hence, the survey represents common, natural western Montana rangelands.

**Results** The average grassland in this survey contained 13 exotic plant species. Total cover of exotic plants averaged 25 percent of the total vegetation cover per grassland. Across all 31 grasslands, of the total identified flora 25 percent of the species were exotic plants. Impacts of exotic plants were measured as reductions in native plant cover associated with increasing abundance of each invader. Of the 48 exotic plant species identified in the survey, 11 showed significant impacts on native plants. Of these 11 high impact invaders, five are classified as noxious by the Montana noxious weed list, but the other six are not. The highest impact invader was cheatgrass, which is currently considered a regulated plant but not a noxious weed in Montana. These data are specific to the bluebunch wheatgrass habitat type; the same invaders may have greater or lesser impacts in other community types.

**Management implications** The resulting survey-based weed impact ranking provides a powerful tool for managers to prioritize weeds for management within bluebunch wheatgrass and similar habitats. The list provides a reference that ranks the invasiveness and the impact of each of 48 exotic species within this habitat. It highlights five high-impact invaders that are on Montana's noxious weed list as well as six high-impact invaders that are not recognized by Montana's noxious weed list. The survey and associated data also provide a baseline for projecting future impacts for these same invaders and for monitoring long-term changes in the system. This work paves the way for developing weed impact rankings for other at-risk habitats that could provide baselines for monitoring. Weed impact rankings are valuable tools for complementing and informing Montana's noxious weed list. Read more about the study and find a link to the journal article by visiting <http://www.fs.fed.us/rmrs-beta/science-spotlights/invasiveness-and-impact-48-exotic-plant-species-native-grasslands>

### WEED IMPACT RATINGS:

1 Cheatgrass <i>Bromus tectorum</i>	4 Sulphur cinquefoil* <i>Potentilla recta</i>	7 Kentucky bluegrass <i>Poa pratensis</i>	10 St. John's wort* <i>Hypericum perforatum</i>
2 Spotted knapweed* <i>Centaurea stoebe</i>	5 Spring speedwell <i>Veronica verna</i>	8 Pale alyssum <i>Alyssum alyssoides</i>	11 Moth mullein <i>Verbascum blattaria</i>
3 Leafy spurge* <i>Euphorbia esula</i>	6 Dalmatian toadflax* <i>Linaria dalmatica</i>	9 Canada bluegrass <i>Poa compressa</i>	* indicates species denoted as noxious weeds in Montana.

### Commodity Insite: Worst July in four years

by Jerry Welch

The month of July has ended, and none too soon for those bullish commodity markets. Based on the Bloomberg Commodity Index, the 9.5 percent decline in July was the worst single month since September 2011. The washout across the wide spectrum of hard assets was so pronounced, commodities per se are now resting on a 13 year low. Unfortunately for the bulls, the weakness in July spilled over to August and this month is now shaping up to be bearish as well. There are various reasons explaining the collapse underway with commodities with most blaming the mess on sharply lower crude oil prices and the economic weakness unfolding in China. There is no doubt those reasons are deadly accurate. After all, crude oil, a leading indicator for commodities has dropped from \$107 a barrel 14 months ago to less \$45 a barrel. And modern history shows clearly: "As China goes, so go commodities." Adding to the woes of the commodity markets due primarily to the uncomfortable situation unfolding in China is the most recent report from the Labor Department regarding U.S. worker pay. The Labor Department announced that wages and salaries in the second quarter was the

slowest pace on record at 0.2 percent. Such wage weakness certainly hints the Fed will not be so quick to hike rates in an effort to fight inflation. On the other hand, as commodity values collapse, worker pay is not robust enough to slow the decline. Or, reverse it. Moving forward, for commodities per se to find a bottom from which to stage a meaningful and sustainable rally several fundamentals must surface. First and foremost, the Chinese economy has to improve. Secondly, as the U.S. economy continues to improve amid job creation, wages and salaries have to rise. Finally, when it comes to commodities, supply-demand must come into balance, as there are no shortages for any commodity. If anything, there are surpluses everywhere. Unless or until those fundamentals lock into place, the line of least resistance for hard asset markets is lower to sharply lower. In my view, with the commodity markets at a 13 year low and likely to head lower before higher, if there is money to be made (or saved!) in the near term it will be on the short side, the selling side of U.S. equities. Soon it will dawn on the trade that equities are vastly over crowded and market participants complacent. Equities are not

immune from the worldwide slowdown that is gaining momentum. Wall Street and the stock market are Disneyland at times and woefully disconnected from Main Street, which is best represented by the commodity markets. I am reminded of a cartoon from years ago. A character dressed in a Peter Pan outfit is flying in the air above a city and higher than the highest of rooftops with his right arm fully extended and his index finger pointing deeper into the sky. His left arm is stretched out and in his hand he is holding a young child's hand. The child is gripping tightly to a stuffed teddy bear. The Peter Pan character says, "I'm taking you to a magical never-never land that is unaffected by events in the real world." The wide-eyed child says, "We're going to Wall Street?" Not only is Wall Street in denial regarding the bearish impact depressed commodities will have on the economy but the shares of the company with the largest market value in the world, Apple Inc. dropped \$20 from the record high of \$130. By any measure, Apple shares are now into what is commonly referred to as "correction territory." Apple shares are under the all-important 200 day moving average. The only other time Apple stock encountered such a scenario

was in late 2012 to early 2013. From the September 2012 high to the low carved out in the spring of 2012, Apple stock tumbled 45 percent. To fully grasp the significance of the washout underway with Apple stock, consider these comments from CNBC: "It's the stock's third five-day losing streak in the past month, knocking the stock down 7 percent in just that time, says Bespoke Investment Group. The stock is down further from its average price the past 50 days than it has been in 12 years, Bespoke says." But CNBC goes on to state, "And while the stock has collapsed below its average price the past 200 days, that's not necessarily a bad thing, Bespoke says. Apple shares have cratered below the 200-day moving average 17 times before. Over history, the stock has typically shaken off the stupor in about a month, Bespoke says." On the other hand, Wall Street shakes everything off if it is bad news. It shakes off the fact commodities are at a 13 year low and now shrugging off the fact that shares of the company with the largest market value in the world is flashing a major sell signal. Are we in one of those rare periods when Wall Street is in never-never land?

grounds. Then, other families came, and at one time there were seven families that came on horseback, bringing their peaches and any other needs on packhorses. Mattie was one of them. When she was young she washed for housewives using the old washboard. They, in turn, gave her food and clothing she could use. She picked gooseberries selling them around town. As she grew older, Mattie made gloves and moccasins that became quite popular with the miners. It was in the late 40s when an old Indian came to town and said he was Indian Mattie's husband, Chief

White Bear, and wanted to be taken up to the area where Mattie had camped. Sheriff Brook had a hard time convincing him that the slaughterhouse had been torn down. Finally, they took him up to the area and he was convinced they were telling the truth. He sadly went back to the reservation. One day, a Mr. F. A. Gross, superintendent of the Fort Hall Agency at Fort Hall, Idaho, arrived in Virginia City and told the residents of the death of Wannush, the aged Indian woman who made her home here for many years. The last summer here she was accompanied by a

woman and a young man who assisted Mattie, who was almost totally blind and feeble from old age, and found it difficult to get around and remained in camp most of the time until the party's departure. Mattie kept the original people's memory alive over 60 years after they were placed in Salmon, Idaho. In 1907, the Lemhi/Shoshone were again moved to Fort Hall when the Treaty of 1868 failed to be ratified. Mr. Gross reported Mattie took two deer hides belonging to a man from Ennis and agreed to tan them for him. Yes, here and there I find them, the people and places

that this area has given to us are treasures to remember and reach out to ... and right now I must head toward my kitchen and make use of my new dishcloth and think of the next person, place or thing that will bring me the joy in learning. We hope to honor Mattie sometime this summer's end (at the time in the past she returned to Idaho) and a carved stone marker will be dedicated, honoring her presence near her old campsite, now the Virginia City Campground. Source: Dick Pace Archives; Mr. Joe Red Feather Bettinger, Lakota

# COMICS & PUZZLES

Calvin and Hobbes by Bill Waterson



Garfield by Jim Davis



## King Crossword

**ACROSS**

- 1 Campus mil. program
- 5 Stein or Stiller
- 8 Carpet style
- 12 Vicinity
- 13 George's brother
- 14 Mimicking bird
- 15 Tide type
- 16 Cookie holder
- 17 Leave out
- 18 Singer Fats
- 20 Snatch
- 22 Orange-flowered impatiens
- 26 Shade
- 29 Meadow
- 30 Biblical verb suffix
- 31 Hebrew month
- 32 Carton
- 33 Destiny
- 34 Veto
- 35 Piglet's mama
- 36 Metallic mixture
- 37 Unpredictable
- 40 Sunbeams
- 41 Royal attendant
- 45 Clone
- 47 Heavy weight

1	2	3	4		5	6	7		8	9	10	11
12					13				14			
15					16				17			
18				19			20	21				
			22			23					24	25
26	27	28				29				30		
31					32				33			
34				35				36				
37			38				39					
		40					41			42	43	44
45	46				47	48			49			
50					51				52			
53					54				55			

- 49 Queen of Carthage
- 50 Molt
- 51 Away from WSW
- 52 Cupid's alias
- 53 Bouquet
- 54 Two, in Tijuana
- 55 Medicinal amount
- 6 ornament
- 7 Historic time
- 8 Access to a nave
- 9 Fire sign?
- 10 Wedding-related
- 11 Blackbird
- 12 "Roscoe"
- 13 Neither partner
- 14 "I — Camera"
- 15 Emmett Kelly, for one
- 16 "Beetle Bailey" dog
- 17 Yon folks
- 18 Minimal change
- 19 Hodgepodge
- 20 Nonessential comforts
- 21 Bragged
- 22 Inundated
- 23 Bashful
- 24 Candle count
- 25 Halloween bagful
- 26 Units of force
- 27 Muralist Joan
- 28 Commotions
- 29 Schnozz
- 30 Recipe meas.
- 31 Personal question?
- 32 Lennon's lady

© 2015 King Features Synd., Inc.

## Just a Pinch

Sharing Hometown Recipes, Cooking Tips and Coupons

By Janet Tharpe

### Easy School Night Dinner, Mac and Cheese With Veggies

"Loved by everyone that eats it!"



With kids heading back-to-school, Jenny Powers' Mac and Cheese with Veggies is a super easy weeknight meal. Kids never turn down a bowl of mac and cheese, and with a recipe this tasty you can bet they'll come back for seconds. Plus, it's a great way to sneak in some veggies!



Jenny Powers  
Franklin, TN  
(pop. 62,487)

See step-by-step photos of Jenny's recipe plus thousands more from home cooks nationwide at: [www.justapinch.com/veggie-mac](http://www.justapinch.com/veggie-mac)  
You'll also find a meal planner, coupons and chances to win! Enjoy and remember, use "just a pinch"...

- Janet

### Mac and Cheese With Veggies

**What You Need**

- 16 oz box of elbow macaroni, cooked al dente
- 1 large onion, finely chopped
- 1 green pepper, chopped
- 2 stalks of celery, chopped
- 1 small can of green chilis, drained
- 1 stick butter
- 6 tbsp all-purpose flour
- 2 c heavy whipping cream
- 1 c sour cream
- 4 c shredded cheddar (use a combo of different cheese if you like)
- 1 1/2 tsp dry mustard
- 1/2 tsp salt
- 1/2 tsp white pepper

**Directions**

- Combine all ingredients and put into a greased casserole dish.
- Cut the butter into small pieces and stir with warm macaroni to melt.
- Bake at 350 for 1 hour.
- You might have to cover with foil if it starts to get too brown.
- This dish makes its own sauce while baking.

Submitted by: Jenny Powers, Franklin, TN (pop. 62,487)

[www.justapinch.com/veggie-mac](http://www.justapinch.com/veggie-mac)

Brought to you by American Hometown Media

**Get the Good News!**

All puzzle answers on B7

**NOVICH INSURANCE AGENCY**  
Twin Bridges • Phone 684-5701  
*For All Your Insurance Needs*  
Serving The Ruby Valley For Over 40 Years

"Stick With The Best!"  
**BOWMAN APPLIANCE SERVICE**  
1035 S. Main St. • Butte, Montana 59701  
**(406) 723-6797**  
We Work On All Major Brands.  
In Ennis, Sheridan and Twin Bridges and surrounding areas  
**EVERY WEDNESDAY**

**SKYLINE SURVEYING INC.**  
  
MARGARET STECKER, PLS • (406) 581-0144  
BOX 321, McALLISTER, MT 59740  
\* Property Corner Location \* Boundary Surveys \* Boundary Realignments  
\* Family Transfer Surveys \* Subdivisions \* Construction Layouts  
\* Elevation Certificates \* Aerial Mapping \* Topographic Surveys

WINDSHIELDS  
**NOVUS AUTO GLASS**  
JIM LINSOTT  
Offering you the highest quality auto-glass repair and replacement  
1075 Nissen Lane Dillon, MT (406) 683-2846  
We're on Facebook! facebook.com/NovusAutoGlassLLC

**BENEDICT BUILDERS LLC**  
BUILDING CUSTOM HOMES & COMMERCIAL BUILDINGS SINCE 1974  
MEETING ALL EXCAVATION NEEDS TOO!  
406.843.5330  
PO Box 294 VIRGINIA CITY, MT 59755

JOE VELAND  
**406.682.3999**  
SERVICE WORK  
NEW CONSTRUCTION  
REMODELS  
PO BOX 987  
ENNIS, MT 59729







**RIVER from pg. B1**

from the Natural Resources and Conservation Service, the Department of Environmental Quality and Montana Fish, Wildlife and Parks.

"And additional contributions from John Stubblefield, Joe Brescia, the Sacajawea Chapter of the Audubon Society, American Fisheries Foundation and Trout Unlimited," Ramsey added. "There were also tens of thousands of dollars of in-kind service donations as well, especially from Miller Recreational, Spanish Peaks Engineering, Scott Gillian and more."

Or, like Miller said, "A lot of pieces had to be moving at once ... it's amazing how everyone came together on this."

**Learning from the project**

"(The Millers are) great stewards of the land," Ramsey said. "This was the ultimate grassroots movement - a landowner led initiative to do something to restore the land."

When Rick Sandru came on board as a supervisor for the Ruby Valley Conservation District five years ago, the project was already being discussed. Now, he said he thinks the end result is a great success. "A lot of times, we're called out to do 310 inspections on the same

stretch of river again and again," Sandru said. "Nobody has the time and money to address anything but the immediate problem. In a lot of instances, we feel like we're taking a band aid approach."

Sandru said he hopes this project will inspire other people to think of solutions. "We're going to look real

hard at this kind of project, especially in places where we have strong landowner support," Sandru said. "The first thing you need is a landowner with a strong commitment to helping out the land. When you go in like this with all these partners and do work on a sizeable chunk of stream, it's a long term fix."



Abigail Dennis/The Madisonian  
Close to 100 people gathered at the Miller Ranch for the tour.

**Ruby Valley Hospital Physical Therapy Occupational & Speech Therapy**  
*Hands on care for all your body needs.*

Orthopedic & Sports Injuries  
Total Joint Rehabilitation  
Back & Neck Care  
Sore Stressed Muscles  
Tension Headaches & Chronic Pain

Self Care  
Home Safety  
Adaptive Equipment  
Hand, Wrist - & Elbow Syndromes  
Neurological Rehabilitation

Available Mon.-Fri. at Ruby Valley Hospital  
220 E. Crofoot, Sheridan, MT 59749-9508 **406-842-5081**

**GRAHAM DRILLING**  
SHERIDAN, MT

Water Well Drilling, Solar Pump Systems for Stock Water, Pump Sales Installation, Service & Repairs

Serving Residential & Commercial Customers in Madison County for over 30 years

Quality Service at a Fair Price  
Phone (406) 842-5214 or (406)682-5290  
[WWW.GRAHAMDRILLING.COM](http://WWW.GRAHAMDRILLING.COM)

**D&D Auto, Inc.**  
AUTO & TRUCK SALES

We Are *YOUR* Go to Guys!

Auto & Truck Repair - Gas or Diesel - All Makes & Models

We Make Hydraulic Hoses  
New Tires, Wheels & Tire Repairs  
Engines & Transmissions Installed - Car & Truck Accessories  
We Install Windshields - Alignments

**ENNIS • 682-4537**

Daily Parts Deliveries to Alder, Sheridan & Twin Bridges Areas  
**24 Hour Towing (CELL 406-570-9872)**

Gasoline 3.24 <sup>10</sup>/<sub>10</sub>  
Premium Gasoline 4.13 <sup>9</sup>/<sub>10</sub>  
Diesel 5.000  
Dyed Diesel

**IT'S JUST NOT WORTH IT**  
DYED DIESEL IS FOR OFF-ROAD USE ONLY. SMALL SAVINGS AT THE PUMP COULD COST YOU \$5,000 IN FINES.

REPORT FUEL TAX EVADERS BY CALLING 1-888-FUEL-LAW.

MDT  
DEPARTMENT OF TRANSPORTATION

**AREA SENIOR MEALS**

**SENIOR MEALS, VIRGINIA CITY**  
Summer Senior meals for Madison County Seniors 60 and over will be served at the Wells Fargo on Wednesdays and Fridays beginning May 20 from 11:30am to noon for \$3.00.

**MEALS FOR SENIORS, TWIN BRIDGES**  
The TBS&CC provides meals for seniors every Tuesday and Friday at 11:30 a.m. at the Wagon Wheel Restaurant in Twin Bridges for seniors 60 years and up. (Spouse and caregivers are invited.) Donations for meals are appreciated.

**RUBY VALLEY FOOD PANTRY, SHERIDAN**  
Open Saturdays from 10 a.m. - noon. Located at 114 N. Main St. in New Beginnings. Serving the Ruby Valley from Silver Star to Virginia City. Contact Doris at 842-7161 or Wannetta at 842-5783 for more information.

**MEALS ON WHEELS, SHERIDAN**  
The Sheridan Senior Center offers meals for seniors 60 years and over Monday - Friday. Seniors may choose to eat at the senior center, family style for \$3.50 or have their meal delivered for \$4.00. Delivered meals are within the city limits of Sheridan and should be called in by 10 a.m. Call Shirley Sand at 842-5966.

**Ruby Valley Baptist Church**  
Tony Shaw, Pastor  
842-5602

Sunday School 9:45 a.m.  
Worship Service 11 a.m.  
Sunday Evening 6 p.m.  
Wednesday Eve 7 p.m.

One block behind IGA, Sheridan

**Find Fellowship With Us**

**Rocky Mountain Baptist Church**  
682-4949

Sunday School 9:30 a.m.  
Morning Worship 11 a.m.  
Evening Service 6 p.m.  
Mid-Week Service, Wednesday 6 p.m.

606 Comley Way, Ennis  
6 Blocks South of City Complex

Located in the heart of Madison Valley for the Hearts of Madison Valley

**Dayspring Church**  
Worship 10:00 a.m.  
Sunday School/Nursery  
**Non-Denominational Christ Centered, Spirit Led Worship**  
Joel Trenkle/Pastor  
Check website for ministries: [dayspringsheridan.com](http://dayspringsheridan.com)  
596-0707 • 3648 Hwy 287  
Between Sheridan & Twin Bridges

**HARRISON COMMUNITY CHURCH**  
Harrison, Montana  
Adult Bible Study ~ 9:30 a.m.  
Sunday School & Church Services ~ 10:30 a.m.  
Pastor Joe Miller  
Come Worship & Sing Praises To Our God. Spread the Word!

**CHURCH OF JESUS CHRIST OF LATTER-DAY SAINTS**  
Sheridan Ward - Visitors Welcome

Sacrament Meeting  
Sundays, 10:00 a.m.  
Sunday School  
11:20 a.m.  
R S & Priesthood  
12:10 p.m.  
Mutual (Youth Group)  
Weds. 7:00p.m.  
3560 | MT State Hwy 287  
Sheridan 842-5860  
Bishop Dustin 684-5255

**Liturgy Schedule**  
St. Patrick, Ennis  
Sunday ~ 8:30 a.m.

St. Mary, Laurin  
Sunday ~ 10:30 a.m.

Deacon Andy Dorrington,  
Pastoral Administrator ~ 842-5588

**Shepherd of the Hills Lutheran Church**  
The Church of Word and Sacrament  
Visitors Welcome

Pastor Ken Stensrud  
Lenten Services starting Feb. 18 at 7 pm

- Sunday Service 9:00 am
- Bible Study 10:15 am
- Sunday School 10:15 am

Lent Services soup/supper 6 p.m.

Corner of Madison and Armitage St.  
Ennis, Montana 406-684-4950

**Madison Valley Presbyterian Church**  
WORSHIP  
September - April ~ 11 a.m.  
May - August ~ 9 a.m.  
**Everyone Welcome Fully Accessible**  
Rev. Jean M. Johnson  
682-4355 ~ Ennis  
Corner of S. Charles & W. Hugel

**FISHERS OF MEN**  
HOLDING FORTH THE WORD OF LIFE

**Dr. Ray Teston**  
Pastor  
Sunday School ~ 9:45 a.m.  
Morning Worship ~ 11:00 a.m.

5050 Hwy 287, PO Box 668, Ennis, MT  
Phone 682-4244 SBC  
**MADISON VALLEY BAPTIST CHURCH**  
Aides for the hearing impaired

**CHURCH OF JESUS CHRIST OF LATTER-DAY SAINTS**  
Ennis Branch

Sacrament Meeting  
10:00 a.m.  
Sunday School  
11:20 a.m.  
R S & Priesthood  
12:10 p.m.

Family History Center  
682-4911, 682-7415, 682-3614  
Pres. Thompson 682-7415  
133 MT Hwy 287

**Christian Science Society**  
Sunday Service & Sunday School 10 a.m.  
**ALL WELCOME**  
Each week a Bible lesson full of healing Christian concepts is read aloud in our Sunday service.  
4983 US Hwy 287 N. • Ennis, Montana  
[www.spirituality.com](http://www.spirituality.com)

**THE BAHAI FAITH**  
To look always at the good and not at the bad. If a man has ten good qualities and one bad one, to look at the ten and forget the one; and if a man has ten bad qualities and one good one, to look at the one and forget the ten. Never to allow ourselves to speak one unkind word about another, even though that other be our enemy.  
451-3923 or 1-800-UNITE  
[www.bahai.org](http://www.bahai.org)

**ENNIS ASSEMBLY OF GOD**  
Love God, Love People  
**SUNDAY SERVICE SCHEDULE**  
Bible Study 9:45 a.m.  
Worship Service 10:45 a.m.  
Children's Church 10:45  
Wednesday Youth Group 6:30 p.m.  
Wednesday Prayer Meeting 7:00 p.m.  
402 Madison Ave - Ennis, MT  
682-4197

**NEW BEGINNINGS CHRISTIAN FELLOWSHIP**  
Your Local Assembly of God Church  
114 N. Main, Sheridan  
842-5845

Pastor Duane Deshner

Sunday Service  
10:30 a.m. (Children's Ministry)

Wednesday (Kids/Youth)  
6:30-8:00 p.m.

Kid's Club (3 yrs-4th grade)  
Pre-Teen Youth Group (5th-6th grade)  
Youth Group (7th-12th grade)

Ruby Valley Food Pantry  
Saturdays: 10:00 a.m.-Noon

We are a church dedicated to serving this valley!

**Ruby Valley United Methodist Parish**  
Invites You To Worship With Us

Pastor Paul Stearns  
Office: (406)842-5934  
Home: (406)842-7732

**Church of the Valley Twin Bridges**  
Sunday School 11:00 a.m.  
Worship 11:00 a.m.  
Youth Group Weds at 6:30 pm

**Bethel UMC Sheridan**  
Worship 9:00 a.m.  
Sunday School 10:15 a.m.  
Youth Group Sunday evenings

**Ready Set Grow Preschool**  
Contact Kaycee Gilman 842-5311

**Madison County Episcopal Churches**  
In full communion with the Evangelical Lutheran Church in America

**Join Us for Sunday Worship!**

<b>Trinity</b> Jeffers/Ennis 7:15 a.m. 11:00 a.m.	<b>St. Paul's</b> Virginia City Sunday 9:00 a.m.	<b>Christ Church</b> Sheridan Sunday 10:00 a.m. Bible Study 9:00 a.m.
--	---	--

[www.rvec.org](http://www.rvec.org)  
Prayer requests: 682-4788 843-5296 842-7713

**GRACE COMMUNITY FELLOWSHIP**  
In Association with The Conservative Baptists of America

**COWBOY CHURCH - Nevada City**  
10 am - All Summer

Christ-centered, Bible Based Teaching  
Open Question Forum

Tel. 406-842-5915  
Pastor Tom Luksha

**King Crossword**  
Answers  
Solution time: 25 mins.

R	O	T	C	B	E	N	S	H	A	G
A	R	E	A	T	R	A	M	O	N	I
N	E	A	P	J	A	R	O	M	I	T
D	O	M	I	N	O	T	A	K	E	
C	O	L	O	R	L	E	A	E	T	H
E	L	U	L	B	O	X	F	A	I	E
N	I	X	S	O	W	A	I	L	O	Y
T	O	U	C	H	A	N	D	G	O	
T	R	A	Y	S	Y	F	O	M	A	N
T	W	I	N	T	O	N	D	I	D	O
S	H	E	D	E	N	E	R	O	S	
R	A	C	V	A	R	C	E	R	S	

**ALCOHOLICS ANONYMOUS**  
Meeting Every Thurs. at 8 p.m., Church of the Valley, Twin Bridges  
**ALANON MEETING**  
Same Time - Same Place

**ALANON**  
Twin Bridges • Church of the Valley  
Thursdays, 8 pm

**ALANON**  
Pony School House • Weeds, 7 pm  
Suzy 685-3692

**ENNIS ALANON**  
Monday ~ 10:45 a.m.  
Basement of Madison Valley Presbyterian Church, Ennis  
Hugel & Charles  
CALL 682-5097 or 682-7023

**"Keep it Simple."**  
**A.A. MEETING**  
Bethany Hall, Sheridan  
(behind Methodist Church)  
Wednesdays ~ 8 p.m.

**Vennis Over The Hill Unity Group**  
Faced with a drinking problem? Perhaps Alcoholics Anonymous Can Help.  
SUZAN - 10 a.m., No Smoking, Virginia City Library  
MON. - Open, 7:30 p.m., Basement of M.V. Presbyterian Church, No Smoking  
WED. - 7:30 p.m., Trinity Church in Jeffers  
FRI. - Open, 7:30 p.m., Basement of M.V. Presbyterian Church, No Smoking

682-3490, 682-7023 Ennis  
843-5352 Virginia City

**Celebrate Recovery**  
Meets every Saturday at 6 p.m. & starts with a meal.

**DAYSRING MISSION**  
3648 Hwy 287, Sheridan  
596-0707

**ALCOHOLICS ANONYMOUS**  
Meeting Every Thurs. at 8 p.m., Church of the Valley, Twin Bridges  
**ALANON MEETING**  
Same Time - Same Place

**ALANON**  
Twin Bridges • Church of the Valley  
Thursdays, 8 pm

**ALANON**  
Pony School House • Weeds, 7 pm  
Suzy 685-3692

# AROUND THE COUNTY

## Mean Dog Blues presentation in Ennis

Submitted by Lucy Ennis

Jo Anne Troxel will present her new poetry book, Mean Dog Blues, at the Madison Valley Public Library on Aug. 15 at 11 a.m. in the community room. Troxel is a third generation Montanan who grew up on the Flathead/Salish/Kootenai reservation at Arlee. She received her undergraduate and master's degree from Montana State University. She also attended summer school for seven years at Christ Church, Oxford, England. She retired from Headwaters Academy in the spring of 2003, where she taught and was head of the English department. Previous to that, she taught senior English and creative writing for 23 years at Bozeman High School, as well as conducting writing workshops in Bozeman and around the state. She is a grass roots organizer and activist and is involved with social issues such as women's rights, the environment and universal health care. She helped organize the local Gallatin Valley Human Rights Task Force.

Troxel is a passionate supporter of the arts and has served on The Montana Arts Council for several years, and was also president of Beall Park Art Center, relocated now to the Emerson Cultural Center. She is currently writing a memoir of her parents who homesteaded in Plentywood. They were a part of the radical movement there in the 1930s.

Join the Friends of Madison Valley Public and hear about her new book.

## Homebuyer's education class in Sheridan

Submitted by Headwaters RC&D, Inc.

On Aug. 26 and 27, head to the Sheridan School to learn about special affordable home financing options, including down payment and closing cost assistance programs for eligible home buyers; information on budgeting and credit, the mortgage process, homeowners insurance, and other aspects of home ownership. Reasonable accommodations for persons with disabilities will be made, if requested, at least one week in advance.

For more information or to register, contact Headwaters RC&D at 782-7333. Registration deadline is Noon on Tuesday, Aug. 25. Homebuyer education classes are funded in part by the Montana Board of Housing, Montana Department of Commerce, NeighborWorks Montana and philanthropic donors.

## The Life and Times of Frank Bird Linderman

Submitted by the Elling House Arts & Humanities Center

Bob Brown will be presenting a program on The Life and Times of Frank Bird Linderman on Thursday, Aug. 27, at 6 p.m. in the beautifully restored Linderman cabin. The cabin is located near Laurin, at the Robber's Roost historic site; approximately 8 miles south of Sheridan, 2 miles north of Laurin, on Highway 287.

Frank Linderman came to Montana in 1885, at the age of 16. He worked as a trapper, guide, miner and assayer until 1897, when he moved to the thriving mining camp of Brandon, near Sheridan on Mill Creek. Linderman would become a newspaper publisher, serve two terms as representative for Madison County in the state legislature and

become a tireless advocate for the Cree and Chippewa nations. A close friend of Charlie Russell, Linderman would later devote himself to art and writing, authoring 13 books and creating 17 bronze sculptures.

This presentation is free and open to the public, and hosted by the Vigilante Book Club of Virginia City who will provide light refreshments.

## Montana Range Tour coming to Madison Valley

Submitted by John Grassy

Department of Natural Resources and Conservation Montana lands have great stories to tell, and the 2015 Montana Range Tour will offer unforgettable tales for attendees of this statewide event.

"This tour will have something for everyone, showcasing projects that are really making a positive impact for these landscapes," said Sunni Heikes-Knapton, Watershed Coordinator for the Madison Conservation District. "Anyone with an eye for good stewardship will benefit by attending."

The two-day event is Wednesday, Sept. 16 and Thursday, Sept. 17. The first stop on day one of the tour will visit a multi-year, multi-landowner noxious weed control project at the foothills of the Tobacco Root Mountains on the Sitz Angus Ranch. Lunch will follow this stop before attendees head out to the Endecott Ranch, where successful grazing strategies are helping the ranch and the health of the stream. The third stop will view the national award winning wetland restoration project along O'Dell spring creek on the Granger Ranches. The first day of the tour will conclude with a hearty banquet dinner in Ennis.

On Sept. 17, the group will witness the history and management of the Wall Creek Wildlife Management Area, where solutions have been created for wildlife and livestock use. Lunch along the Madison River will follow before the tour visits the Cameron Bench area where progressive approaches are increasing forage.

For more information, contact Heikes-Knapton at 682-7289.

## Blood drive in Sheridan

Submitted by Kathy Flick

Blood drive in Sheridan on Tuesday, Sept. 1 from 1 to 6 p.m. at Bethany Hall behind Bethel Methodist Church on Main Street. Call Kathy Flick for info or to make an appointment at 842-5128. Walk-ins welcome.

## POW/MIA memorial ride

Submitted by Dick Juvik

Montana POW/MIA Awareness Association On Saturday, Aug. 15, veterans and supporters will be riding motorcycles and traveling by vehicles from Helena to West Yellowstone in the second annual Montana Ride To Remember. It is a 183 mile trip dedicated to the memory of the more than 83,000 POW/MIA personnel and focusing on the 55 personnel from Montana.

Montana POW/MIA Awareness Association was established by a group of Montana veterans and supporters focused on bringing awareness to POW/MIA issues throughout Montana.

## GUYS LIKE US

HANDYMAN SERVICE

PROFESSIONAL • RELIABLE • AFFORDABLE

WHEN THE BIG GUYS  
ARE TOO BUSY CALL  
GUYS LIKE US

NO JOB TOO  
BIG OR SMALL

All Home  
Repairs,  
Installations,  
Painting,  
Property  
care taking,  
Remodeling

Ed Hatlee  
406 581 3178  
406 682 4483

## ENNIS PHYSICAL THERAPY

Specialized/Individualized patient focused care!

Patient care based on over 20 years of experience

Robert "BOB" Sahli, PT/AT/CLT  
OLDEST Healthcare Provider in the Madison Valley  
Physical Therapist/Licensed Athletic Trainer  
(ph) 406-682-3112 • (fax) 406-682-3132



Church shopping? Cool!  
Take a friend. Try a few!  
Find a church you LIKE Then Go!  
at Christ Episcopal Church at Sheridan at www.rvec.org at



JOIN US ON  
FACEBOOK!

and be the first to get  
breaking news.  
facebook.com/  
madisonian

UNDER NEW  
OWNERSHIP

MM

**MONTANA MAC'S**

(in old Mill Creek Inn building)

SUNDAY - THURSDAY: 7 AM TO 9 PM

FRIDAY - SATURDAY: 7 AM TO 10 PM

Mac-Attack  
Burger  
Over 1 lb of Meat!

Serving delicious  
Breakfast • Lunch • Dinner

Baby Back Ribs! Thursday Nights  
Surf & Turf! Friday Nights  
Prime Rib! Saturday & Sunday

102 Mill Street • Sheridan • 406-842-7298

## MVMC AUXILIARY HOME TOUR August 22

"Pure Montana" to "Globally Inspired" are the styles and themes of homes you will experience on the 6th Annual Madison Valley Home Tour presented by the Madison Valley Medical Center Auxiliary. It takes place August 22, 2015 from 10am to 5pm. Tickets are available for \$25 at the MV Medical Center or the Ennis Chamber of Commerce. Day of tour tickets are available for \$30 from 9:30 - 11am at the Medical Center.

The houses are located around the Ennis area. One is in an amazing location and exhibits an incredible number of objects from all over the world. This is a collection unlike any you've seen before.

A brand new home has incorporated environmentally "green" methods to power household utilities and unusual materials create a one-of-a-kind interior décor. Hand-crafted furniture further enhances the ambiance.

This house could be found on the east coast or mid-west but fits in oh-so-well to our Montana setting. Much of the furniture are family heirlooms that blend beautifully with the sculpture pieces and modern conveniences.

Another home blends the old world with the new world. The sleek tile work is fabulous along with the state-of-the art kitchen. Then the house transforms into spaces reminiscent of an English country hotel. The antiques and other furnishing choices reflect the owners' English and Canadian roots as well as places they have lived.

Once again, we are proud to include a "little" house. It may not be as large as others on the tour but every square inch has been well designed to easily accommodate family and guests. It is "off the grid" with its own solar and wind power. Old barn wood and pressed corrugated metal are featured.

Finally, there is a "big" house. The owner has been incredibly busy completely renovating an older house and grounds. Take some time to learn about the hi-tech greenhouse in addition to all the magnificent materials that have gone into the restoration. Be sure to see the dog wash room - really!

When you get your maps the day of the tour, check out the silent auction. Again, there are "adventures" that include visiting the private



residence of a grizzly bear; casting lessons, a Madison River float trip, and fishing library; a night at a cabin including 3 meals and an ATV tour; horseback riding and lunch in Big Sky country; and a "Madison Valley" lamp that will enhance your own Montana décor.

For more information e-mail hometour@mvmedcenter.org or call 682 5073 or visit the Madison Valley Medical Center reception desk.



MADISON VALLEY  
MEDICAL CENTER  
AUXILIARY



## RESISTING CHANGE SINCE 1863!

*Some folks made a fortune here...  
But what they left behind is priceless.*

All of Montana has the deepest pride and affection for Virginia City. No more colorful pioneer mining camp ever existed. Dramatic tales of the early days in this vicinity are legion. Rich placer diggings were discovered in Alder Gulch in the spring of 1863 and the stampede of gold seekers and their parasites was on! Sluices soon lined the gulch and various "cities" blossomed forth as trading and amusement centers for free-handed miners. Virginia City, the best known of these and the sole survivor, became the Capitol of the Territory.

The very much alive ghost town, Virginia City, Montana, is frozen in time. It is a remarkably well-preserved Old West Victorian gold mining town just 50 miles west of Yellowstone National Park (90 miles by road). When the gold ran out, there was still enough left so that homes and businesses were occupied, but there was not enough wealth to remodel the buildings. So it froze, and now represents the whole Victorian era. Virginia City is the true and original Old West. It is a gem, held within an incredibly rich area of natural beauty, recreation and history.

*Come rediscover Virginia City & Nevada City, Montana!*



come and **STAY & PLAY**

*today!*

**FAMILY FUN DAY PASS**

Good for 2 days for families of 5  
Purchase at VC Depot or NC Museum

**\$69**

**Packages include:**  
ENTRANCE INTO MUSEUM, UNLIMITED TRAIN RIDES, GOLD PANNING FOR A FAMILY OF FIVE.

MONTANA HERITAGE COMMISSION  
1.406.843.5247  
WWW.VIRGINIACITYMT.COM



LIVING HISTORY EVERY WEEKEND  
*between mid-May through mid-Sept!*



August 15-16 The Flour Riot  
August 22-23 The End of the Innocents  
August 29-30 The Women of the Gulch  
Sept 5-7 Jack Slade's End  
Sept 12-13 Beans, Bacon & Bannock Bread



**A MELODRAMA PLAY**  
PLUS OUR VARIED, VIGOROUS, VAGARY OF VIVACIOUS VAUDEVILLE VARIETY ACTS!

May 22-June 21  
**BOX & COX**

June 23-July 26  
**THE BLUNDERING HERD**

July 28-Aug 23  
**THE PHANTOM OF THE OPERA**

Aug 25-Sept 20  
**BOX & COX**



SHOW TIME | Tu, W, F & Sat 7pm  
W, Th, Sat & Sun 2pm

TICKETS Adult \$20  
College, Seniors, Military \$17  
Children 17 & under \$10  
Group discounts available

**1.800.829.2969**  
www.virginiacityplayers.com

**NOW AIR CONDITIONED!**

**BREWERY FOLLIES**  
NONSENSE AND PARODY  
HILARIOUS COMEDY CABARET  
H.S. GILBERT BREWERY



*a cabaret show...wild enough for any old-time miner!*  
-David G. Hesser, SUNSET MAGAZINE  
**MAY 22 - SEPTEMBER 26, 2015**



**SHOWTIMES 4 PM & 8 PM**  
**CALL FOR RESERVATIONS**  
**800-829-2969 EXT 3 TICKETS \$20**

### ALDER GULCH SUMMIT TOURS

PRESENTED BY NELSON STUDIOS LLC



Enjoy a 90+ minute ride through the heart of Montana's gold country. Learn the fascinating history behind the single largest gold strike in the Nation's history.

Enjoy live historical interpretation as you see the wonders of Alder Gulch aboard Colossus, the largest off road tour truck in Montana.

TOURS DEPARTING HOURLY  
JUNE-AUGUST EVERY DAY

### Upcoming 2015 Events

Aug 14-16	A Step Back in Time Weekend	406.660.1453
Aug 15	A night of Art & Music at The Elling	406.843.5454
Aug 28	Bozeman Trail Chuckwagon Cookoff	406.579.2477
Sept 5	Labor Day Horseback Poker Ride	406.843.5700
Sept 11	SOB (Save Our Buildings)	406.843.5700
Sept 12	Bozeman Symphony @ The Elling House	406.843.5454



Montana Heritage Commission  
PO Box 338  
Virginia City, MT 59755  
www.virginiacitymt.com

Virginia City Area Chamber  
PO Box 218  
Virginia City, MT 59755  
www.virginiacity.com



Find us on Facebook! Virginia City Montana {Chamber of Commerce}

*This advertisement was paid for by the Montana Heritage Commission through the accommodation taxes.*

