

The Madisonian.

THE LOCAL NEWS OF THE MADISON VALLEY, RUBY VALLEY AND SURROUNDING AREAS

Montana's Oldest Publishing Weekly Newspaper. Established 1873

75¢ | Volume 143, Issue 40

www.madisoniannews.com

July 30, 2015

The question of access Group discusses lack of access around Ruby Reservoir at interagency meeting

Abigail Dennis
THE MADISONIAN
a.dennis@madisoniannews.com

"One of the places I've always liked to fish is the Ruby Reservoir," said Tom Pruitt, Alder resident. "Access has never been a problem."

Pruitt said five years ago, the west side of the reservoir was bought up and closed off, followed by the land at the south end of the lake.

"Now, this year, there are 'no trespassing' signs and 'for sale' signs all over the east

side," Pruitt said. "Basically, there's no access (to the Ruby Reservoir) without trespassing."

Pruitt attended an interagency meeting on July 23, at the Ennis National Fish Hatchery. The meeting happens quarterly, and serves as an opportunity for Bureau of Land Management, Montana Fish, Wildlife and Parks, Forest Service and other interested parties to meet with the Madison County commissioners to discuss what is happening in the area.

One of the topics touched on was the issue of land owner-

ship around the Ruby Reservoir and the BLM-managed Ruby Reservoir Campground, which is partially on private land.

"The latrine, main boat launch and several of the main campsites are located on private property," said BLM public affairs specialist David Abrams. "The campground at Ruby Reservoir is partially on private property."

BLM assistant field manager Pat Fosse said one solution to the campground issue would be to move the BLM toilets and build a road that only cuts through

BLM land, not any private land.

"There are some other access points from (BLM land), but they are kind of steep or willowed in," she said. "We are very sensitive to people's private property rights."

Pruitt said the issue is greater than the fact that the campground is partially on private land – he said the big issue is that access around the whole reservoir is "deteriorating."

"There's not access as it is," he said. "What would be nice

Turn to RESERVOIR on pg. 2



Photo courtesy Bureau of Land Management

The land highlighted in yellow is BLM land located around the Ruby Reservoir.

NEW CELL TOWER IN THE WORKS FOR SHERIDAN



Sheridan's lagoon site will potentially be the home of a cell tower. The lagoon was chosen because of its drier elevation and fiber optics already in place.

Caitlin Avey/The Madisonian

Town council signs conditional approval for lease agreement with Commnet

Caitlin Avey
THE MADISONIAN
news@madisoniannews.com

The Sheridan town council held a special meeting on Tuesday, July 21 to discuss a lease agreement for a proposed cell tower. The pro-

posal comes from the company Commnet, a communications and roaming carrier.

Commnet proposed the construction of a "lite" tower (less than 100 feet) to be constructed at Sheridan's lagoon site. According to Commnet's representative Bill Ray, the lite

tower is less intrusive to the town and because it is under 100 feet, there are no special zoning laws to deal with. The tower would operate under a 4G LTE service, but Ray says 3G phones will work too.

According to Mark Hansen, vice president of network sup-

port services for Commnet, they pay for the construction and operation of the tower, while service providers such as Verizon, AT&T, T-Mobile and Sprint pay a fee to allow their customers to roam off of the tower.

Turn to CELL on pg. 2

PAVING RUBY CREEK

Expect delays heading toward campground along Madison River

Abigail Dennis
THE MADISONIAN
a.dennis@madisoniannews.com

Construction on Ruby Creek Road is underway, and the Bureau of Land Management says visitors using the road should anticipate up to 15 minute delays.

"The road will remain open throughout the paving project, which runs through Sept. 8," according to a BLM press release.

The road runs parallel to the highway and starts near McAtee Bridge. It runs a little over three miles to the Ruby Creek day use area and campground, which will undergo a renovation later this fall.

"Right after labor day, the road should be paved," said

Alan Ringlein, project manager with A.M. Welles. "(Then) we are closing the campground and day use area to redo the parking lot and put in a new boat ramp at the day use area. (We will) re-gravel and reshape the roads in the campground."

The day use area and the campground will be closed from Sept. 8 to Oct. 16, Ringlein said.

Joe Dilschneider, Ennis fly shop owner and outfitter, said he thinks there could be some "mild impact" on the fishing due to the construction.

"I think there is a mild impact in concentrating (fishing) pressure elsewhere," Dilschneider said. "The more access points (to the

Turn to RUBY on pg. 2

SHARING NEWS

DIVERSE GROUPS GATHER AT MADISON COUNTY INTERAGENCY MEETING

Abigail Dennis
THE MADISONIAN
a.dennis@madisoniannews.com

Four times a year, representatives from the Bureau of Land Management, Montana Fish, Wildlife and Parks, Forest Service, Department of Natural Resources and Conservation and conservation districts meet with Madison County government officials for an interagency meeting.

On July 23, around 15 people from those various groups met at the Ennis National Fish Hatchery to discuss issues ranging from conservation to logging to county planning.

Here is a list of highlights:

FWP

FWP biologist Dean Waltee is currently working on a proposal to close some roads in the Blacktail Wildlife Management Area to motorized vehicles.

"With vehicle management, I think we can hold game on (the WMA) during hunting season," Waltee said. "Instead of displacing them to the surrounding private land."

Another reason Waltee is considering the road closure is to eliminate roads that loop certain areas and allow hunters to surround and shoot elk in a free-for-all.

"It will give the animals a way to escape," he said. "And because of maintenance needs. Every mile of road is a mile we have to maintain, spray weeds on and more."

If the closure on the Blacktail WMA works, Waltee said he might consider implementing some road closures on the Robb-Ledford WMA in the future. Both WMAs are located on the southwest side of the Gravelly Mountain Range.

Madison Conservation District

Ethan Kunard from the Madison Conservation District told the group about a restoration project in the works on Norwegian Creek, outside of Harrison.

"They're willow waffle structures," Kunard said. "We're putting them in to try to get the water slowed down

Turn to MEETING on pg. 2

DON'T MISS THE BUS

Madison County Transportation Committee approves bus routes for upcoming school year

Abigail Dennis
THE MADISONIAN
a.dennis@madisoniannews.com

Representatives from all Madison County schools meet annually to discuss bus routes and independent travel stipends to get students to school – every public school district is required to offer students transportation to school. In all, the total amount of miles buses drive in Madison County was 1,175.9 miles per day.

"The funding (for bus routes) is 50 percent state funding and 50 percent levied county taxes," according to Pam Birkeland, Madison County Superintendent of Schools. "Based on the total of all of the county districts' needs, I calculate

the mills needed to cover the county's 50 percent and the commissioners set the levy."

In a rural area like Madison County, bus routes are not always the most practical solution; sometimes families are offered stipends for independent travel. Students who live in areas that meet a number of requirements – condition of roads and distance – to be considered isolated can receive a daily rate for transportation to the closest bus stop or the school, if there is not a bus route nearby. If a home is not considered isolated, the stipend for independent travel is based on mileage to the nearest bus stop or school.

On Wednesday, July 22, the Madison County Transportation Committee gathered in

Virginia City for their annual meeting – representatives from each Madison County school district and Whitehall were in attendance. Though Whitehall is not located in Madison County, they run bus routes through it to pick up students.

Birkeland opened the meeting explaining that she is in the process of digitizing each district's bus routes, so amendments will be easy to make in the future.

"We need to verify all addresses so we can make this accurate," Birkeland said.

She has already worked with Ennis and Sheridan to make sure their routes are correctly identified, and said she will meet with Twin Bridges and Harrison to get accurate

addresses in the near future.


Ennis Superintendent Jon Wrzesinski informed the committee there are no changes to the Ennis bus routes for the 2015-16 school year.

Next, Harrison Superintendent Fred Hofman said his routes are also the same as last year.

"Last year we got rid of a route," Hofman said. "We had one out to Cardwell and only one kid. Now that's an individual transportation contract."

The same was true in Sheridan – Superintendent Mike Wetherbee said there are no changes to routes in his district. In Twin Bridges, however, Superintendent Chad Johnson

Turn to BUS on pg. 2

 **RUBY VALLEY**
Member FDIC
P.O. Box 417 • Twin Bridges, MT 59754 (406) 684-5678
P.O. Box 587 • Sheridan, MT 59749 (406) 842-5411




THE VISA PREPAID CARD is a safe and convenient alternative to carrying cash. You'll never exceed your budget because you only spend what's on the card.

Once you load your card, you're all set. The card can be used anywhere Visa debit cards are accepted. • Retail stores • Restaurants • Online • Phone and mail orders

TABLE OF CONTENTS

Local News.....	A3	Columns.....	B3
Opinion.....	A4	Comics/Games.....	B4
More News.....	A5	Classifieds/	
Lifestyle.....	B1	Public Notices.....	B5-B7
Health & Wellness	B2	Calendar.....	B10

Visit us online at www.madisoniannews.com



Conforming Mortgage Fixed Rates

30 Years - .000% Points
3.875% Rate 3.976% APR

15 Years - .000% Points
3.125% Rate 3.302% APR

Rates subject to change without notice, APR calculation is based on a \$200,000.00 loan amount with a 1% loan origination fee, \$125.00 processing fee, \$295.00 document processing fee, Mers fee \$11.95, \$15.00 flood determination fee, \$4.00 transcript fee, 15 days of prepaid interest and *discount point fee as stated above.

If you haven't enrolled for E-Statement delivery, the time is now.

Your statements will be made available to you at the touch of a button ... no more waiting for the mail and, most importantly, it's paperless!
 Thank you for banking with www.bankingonthefuture.com

AUTO LOANS

AS LOW AS
4.5% rate
4.879% APR

Rates subject to change without notice, APR calculation based on \$20,000.00 loan amount with a \$149.00 loan fee, 48 monthly payments of \$493.67 on approved credit.



Office: 406.682.4215 • Toll Free: 888.622.4215
 213 E. Main St • Ennis, MT 59729

WWW.BANKINGONTHEFUTURE.COM

HARDY DRYWALL
FULL SERVICE DRYWALL, PLASTER & STUCCO
406-596-3137

McAllister Inn
 Steakhouse and Bar

Montana Fine Dining, Steaks, Seafood and Nightly Specials.

5566 Hwy 287 N • Lunch and Dinner
 For reservations - 406-682-5000

Madison Valley Roofing
 Formerly Savage Roofing
 Roofing Year Round!

Fully insured
 FREE Estimates
 Call 641-0059 or 682-7523

B&E CONVENTIONAL FRAME HOMES
 COMMERCIAL REMODELS & ADDITIONS
 HAND-CRAFTED LOG HOMES

All phases of construction, design and consulting

CUSTOM BUILDING & DESIGN

e-mail: bande@3rivers.net | www.bandeconstruction.com
 brad bullock 581-4117 | ken evans 490-2758 | office 682-7942
 p.o. box 1444 Ennis, MT 59729

RESERVOIR from pg. 1

is if BLM could trade some land to let folks build cabins up by the highway and let the public use down by the lake." Fosse said that may be a possibility, but that the BLM is limited because they only have one realty specialist on staff.

Madison County commissioner Dave Schulz said the county has heard from multiple people who are

concerned about the issue.

"If we can work with you, we will," he said to Fosse. "Losing the land that's public out there will have consequences."

**"In the 15 years I've been here, I used to have about 50 places and now I have 10 to hunt and fish."
 - Tom Pruitt, Alder resident**

Widespread issue

Last weekend, Pruitt said he counted 54 trailers using the campground, which is an

indication of how many people recreate at the reservoir.

"The land used to be owned by Montanans," he said. "They were good people. They didn't care

if you go down and fish if you didn't mess things up ... In the 15 years I've been here, I used to have about 50 places and now

I have 10 to hunt and fish."

Schulz asked Fosse if the county could meet with the BLM in the future to visit about solutions.

"Yes," Fosse said. "I do think we should meet sooner than later."

Fosse also added that one of the BLM's highest priorities is gaining and maintaining access to public lands.

"You really hate to see losing access," Pruitt concluded.

RUBY from pg. 1

river), the better the fishing pressure is dispersed."

Dilschneider said the inconvenience of the work is not a "huge deal" for him or for people guiding out of his shop, but he said he does not understand the justification for the project.

"It's not necessary," he said. "I believe that road was paved once before and it just fell into major disrepair and they tore it out. Now they're trying to do it again ... People will drive too fast and it will require more maintenance."

Chris McGrath, BLM out-

door recreation planner, said he does not see any complications in the construction.

"It should be a fairly simple and straightforward project," he said.

The paving and redo of the campground and day use area is being funded through a Federal Access Highway Grant the BLM applied for in 2009 or 2010, McGrath said.

"It took awhile for the funding to come through," he said. "The road has been bad for us for years - we have to grade it multiple times a year and it doesn't get the job done."



Abigail Dennis/The Madisonian
 The Ruby Creek Campground will be closed after Labor Day until Oct. 16.

MEETING from pg. 1

to get sediment to drop and build up the streambed."

The Norwegian Creek streambed has dropped down 15 feet and is in "really bad shape," Kunard said.

"This is a slow process, but it's restoration that doesn't cost anything," he added.

Madison County Planning Board

Last year, Madison County implemented a preconstruction safety review process, according to director Charity Fechter. The process allows owners and contractors to meet with emergency responders, like fire chiefs, to get recommendations about the structure before it is started, like if the driveway should be wider so fire trucks can reach the building.

"They are coming in much earlier to get the informa-

tion," Fechter said. "During the planning process instead of right before construction."

Fechter said she thinks the process is working well, and that people have become receptive to it, especially because the suggestions are not regulatory, they are just advisory.

Forest Service

Madison District Ranger Dale Olson was unable to make the meeting, so acting fire management officer for the Forest Service, Paul Roose, stepped in.

"We've had a few fires already," he said. "Though we're getting rain, we're still getting starts."

The night before the meeting, July 22, a lightning strike by Moonlight Basin lit a tree on fire, but the firefighters were able to contain the blaze.

"Though we're getting moisture, it's still dry," Roose said. Roose also reported that the

Forest Service logging project up South Meadow Creek is completed, and the area will soon be opened back up to the public for cutting firewood.

BLM

The BLM recently approved an amendment to the plan for the mining project outside of Pony, according to assistant field manager Pat Fosse.

"We approved the amendment to take more waste rock out of there," Fosse said. "(The project) is ongoing this year and next year. It needs to be completed November of next year."

Fosse also said the proposed bike trail at Revenue Flats outside of Norris is on hold.

"(Field manager Cornie Hudson) decided to put that on hold for awhile," Fosse said. "We are gathering more information. We have traffic counters out there to get an idea of how much it's used."

Before concluding, Fosse brought up the issue of growing concerns about off road vehicles.

"They're spreading weeds - causing a lot of resource impairments," Fosse said. "We have concerns, but we're not sure what to do anymore."

In areas where BLM posted signs indicating off road vehicles were not allowed, Fosse said the signs get torn down and the rules are ignored.

"I agree with you," said Madison County commissioner Dave Schulz. "I don't know what the answer is. It seemed for awhile, they did a good job of patrolling themselves."

Waltee pointed out that signage is important.

"If we can remain persistent on keeping things signed, I think we will see more compliance," he said. "If a sign gets ripped out, put it back up."

BUS from pg. 1

said the school has tweaked a few routes to make them more comparable in length, so the buses arrive at school at the same time in the morning.

"We just evened out some routes," Johnson said.

The committee voted unanimously to approve all the bus routes.

Legislative update

By law, the transporta-

tion committee is required to approve all bus routes passing through the county from any school district. However, there is a grace period where the county superintendent can approve a route for a set amount of days before the committee meets and votes on it.

Birkeland said that number of days has always been 30, but during the legislative session this past year, county superintendents across the state got that changed.

"That time is extended," Birkeland said. "Now it's 90 days. The county superintendent can approve a new route temporarily for 90 days while the committee finds a time to meet."

Ennis and Big Sky

Wrzesinski also updated the group about what is happening in Big Sky.

"We did purchase a bus for them but there was some miscommunication on who was finding a driver," Wrzesinski

said. "We thought they would provide a driver from Big Sky. They thought we would, but that's not feasible for us."

Since part of Big Sky is located in the Ennis School District, Ennis is responsible for providing transportation for the students who reside in Madison County.

"If they don't find a driver, we end up with an extra bus and we will have to approve individual transportation contracts for all of them," Wrzesinski said.

CELL from pg. 1

"Each provider has the ability to allow phones to work," said Hansen. "(Commnet is) not in control. If you have any trouble connecting to the tower, it's probably an issue with the rate plan you're on."

Hansen said that most services should work, but prepaid and track phones might have trouble connecting to the tower.

Karen Talley has been highly involved in the proposal process and believes having cell coverage is important to the economic development of Sheridan.

"Most people come here to recreate and if they can't check their work emails or calls, they're not coming back," said Talley during Tuesday's meeting. "Not having service is going to hurt us."

For Talley, not having cover-

age is a safety issue for the town and those traveling through.

"If someone gets hurt, they have to drive 10 minutes into town to call for help and those first few minutes are critical," she said. "It's also a huge problem for our emergency services."

The lagoon site was chosen for the tower based on its elevation and ability to provide coverage up and down the valley, and has already been surveyed.

"Originally, (Commnet) wanted to put the tower at the ball park," Talley said. "But the lagoon site already had fiber optics in place to run pumps and it's a dryer elevation."

According to Talley, coverage from the lagoon site should include Twin Bridges to the Sheridan Cemetery as well as the Mill, Indian and Wisconsin Creek drainages.

Members of the council also asked for a solar light to be constructed along with the tower as a safety factor.

Council members passed a conditional approval for the lease to be signed after minor amendments with the lease agreement are made.

According to Ray, after everything is approved and the lease is signed, Sheridan could potentially see a tower up and running by the end of summer.

SHERIDAN SPEAKS: Cell coverage in the valley

"I live two miles outside of Sheridan going toward Twin. I can sit in the same place and have three bars and then poof, there is none! It's very frustrating as this is my only way of making long distance calls!"

- Daina Bruno

"We do not get cell service in Twin or Sheridan. We just get nothing. We are in that area about once a week and it's very frustrating! However, we are trying to be understanding."

- Mary Jane Woodward Crane

"We live between Dillon and Twin Bridges and used to get decent cell phone service with Cellular One. When they left, we (like many others) that depend on our cell phones had no service. We chose AT&T and do not get any service here at all. We basically are paying for very spotty service when we happen to be outside of Dillon, Twin or Sheridan. It absolutely stinks."

- Sandra Riley Nyhart

BIG SKY COUNTRY



Abigail Dennis/The Madisonian
 The Madison River winds through the valley near the Wall Creek Wildlife Management Area.

MORE NEWS:

DISTRICT COURT ROUND UP

Abigail Dennis
THE MADISONIAN
a.dennis@madisoniannews.com

Hostetler given deferred sentence

On July 27, Kerby Gabriel Hostetler, 20, appeared at the Madison County Courthouse before Judge Loren Tucker for a sentencing hearing.

The state, represented by County Attorney Chris Christensen, charged Hostetler with

theft by unauthorized control in a value exceeding \$1,500 and alleged Hostetler drove a truck that did not belong to him from July 1 to July 24, 2014, without authorization from the vehicle's owners.

The maximum penalty for felony theft is a fine in the amount of \$50,000, imprisonment for a term not to exceed 10 years or both.

Both Christensen and Hostetler's attorney, Peter

Fischer, recommended Hostetler be sentenced with a three year deferred sentence and a suspended fine of \$1,000.

Judge Tucker ordered Hostetler begin paying his restitution to the victims – a total of \$7,781.90 – on Aug. 10, with \$100 due per month.

"To the extent you can pay more and get your debt paid down, the better it is, of course," Judge Tucker said. "There are occasions when

young people get off track and use some bad judgment and end up in jail or here in court."

Judge Tucker gave Hostetler a six year deferred sentence and a suspended fine of \$1,000.

"You are under supervision for six years," Judge Tucker said. "Once the restitution is paid ... you may be able to shorten that term."

Alleged felony DUI

Julie Ann Cox, from Boze-

man, appeared before Judge Loren Tucker at the Madison County Courthouse on July 27, and pleaded not guilty to the charges of a fourth or subsequent DUI.

The state, represented by County Attorney Chris Christensen, charged Cox with two alternate charges – if she is convicted of one, she cannot be convicted of the other.

The first charge is driving under the influence of alcohol, fourth of subsequent offense.

The alternative charge is operation of a noncommercial vehicle by a person with an alcohol concentration of 0.08 or more, fourth of subsequent offense.

Both alternate charges stem from a June 19, 2015, incident, where the state alleges Cox was "in actual physical control of a vehicle upon the ways of this state open to the public while under the influence of alcohol," according to a filed Information.

TAKING SHAPE: Ennis Senior Center becomes an actuality at the hands of volunteers

Abigail Dennis/The Madisonian
In just a few short weeks, the Ennis Senior Center will serve its first meal.



Abigail Dennis
THE MADISONIAN
a.dennis@madisoniannews.com

Nail by nail and board by board, the Ennis Senior Center is taking shape in the old Pit Stop Pizza building across from Town Hall. "It's all volunteer work," explained John Heckler, a

member of the board for the senior center. "We will be serving our first meal the first part of October this year."

Heckler and other volunteers have been working tirelessly to renovate the building and turn it into a home for seniors in Ennis.

"It will be a senior and community center," Heckler

said. "The current footprint is capable of housing 95 people, but probably 70 comfortably. We want to use some of the space for recreation – a pool table."

The building will house the Meals on Wheels program – it will have a commercial kitchen that can feed seniors who want to eat on site, but also pre-

Abigail Dennis/The Madisonian
Bob Loveland (L) and John Heckler (R) take a break from working to pose for a quick photo.



pare meals to be delivered. "I'm terribly excited about it," Heckler said. "It's time. It's something this town has been talking about since 1987, and it's happening."

The project is funded through money set aside from a mill levy to support seniors in Madison

County, Heckler explained.

"That's it," he said. "The (Madison Valley) Woman's Club is donating \$5,000 a year – I think they will reconsider at five years. That is how we are paying for the facilities."

Heckler said the group has plans for future expansion as well, and has submitted a Community Develop-

ment Block Grant to the Department of Commerce.

"We should be hearing whether we have been selected for a grant before the end of July," Heckler said. "The addition would add private offices for seniors where they can get wellness check ups, a quiet room an activity room and more."



All photos Caitlin Avey/The Madisonian

Clockwise from bottom left The students from the Artemis Institute take a moment to pose with their all-natural structure. Students play in a new fort structure designed and built by students of the Artemis Institute. Jack Leonard, 4, explores the new playground.

ECCS GETS A NATURAL MAKEOVER

Caitlin Avey
THE MADISONIAN
news@madisoniannews.com

The Ennis Community Children's School playground got a facelift, thanks to the Artemis Institute out of Bozeman. ECCS is a preschool, after school and summer care program for children 12 and under. The school currently has 43 students enrolled in their summer program.

Lisa Roberts, a member on the board of directors for ECCS, said they heard about an opportunity to apply for the Artemis program through an ad in the newspaper. "We applied for the program and were selected last fall," Roberts said. "(Artemis) renovated our sandbox, planted different trees and plants – and it is just wonderful."

ECCS was established in 1982, and Roberts said it is great to see generations come together.

"Each generation

adds something to the school," Roberts said.

The Artemis Institute is a design and education program that works to explore the relationship between nature and culture, and incorporates that into project design. The program is an eight-week elective course for university students.

Artemis' philosophy for the natural playground is to expose children to natural elements.

"We want them to experience nature, as well as work on developing their creativity and motor skills," said Gabriella Fonseca, a student at the Artemis Institute.

For Fonseca, who studies architecture at the University of Texas San Antonio, the best part of the eight-week long process was seeing the children enjoying the new space.

"It makes all the long days worth it," said Fonseca "We kept the children in mind through the entire process and seeing them run and play is very rewarding."

BDNF welcomes new deputy forest supervisor Scott Snelson comes to Southwest Montana from Minnesota

Abigail Dennis
THE MADISONIAN
a.dennis@madisoniannews.com

Scott Snelson, new deputy forest supervisor for the Beaverhead-Deerlodge National Forest is happy to be back in Montana.

"The landscape is just so unique," said Snelson about why he is excited to work in Southwest Montana. "Managing the resource is important here – managing it for those who live off the land, recreate and more – this

place is a nexus for many uses."

Snelson replaces previous deputy Chuck Mark, who moved to the Salmon-Challis National Forest in April 2013, according to BDNF public affairs officer Leona Rodreck.

Most recently, Snelson was the district ranger for the Laurentian District of the Superior National Forest in the Arrowhead Region of Northern Minnesota, according to the release.

Snelson has also worked in

Colorado, Alaska and Montana. He grew up in central Minnesota, and spent his summers in northern Wisconsin, lending a hand on his uncle's dairy farm.

"Snelson spent 16 years in Montana where he earned both his bachelor and master of science degrees from Montana State University in biological sciences," according to the press release. "... He (also) worked as a U.S. Forest Service trail crew foreman in the Bob Marshall Wilderness and a fire fighter."



Courtesy of Beaverhead-Deerlodge National Forest
Scott Snelson started as the new deputy forest supervisor for the BDNF on July 27.

Thank you for help during tragedy

Dear Editor,

We wish to extend a heartfelt thank you to our neighbors,

relatives and many friends for all that was done for us in our recent tragedy. We deeply appreciate the prayers, food, flowers, cards,

memorials and acts of kindness we received. Also a special thanks to the EMTs that responded and the people at the scene that offered help

and assistance. We love you all.

Thank you,
The family of Ed Guinnane

OPINION

The Madisonian.

Established in 1873

(USPS 325-340)

Montana's Oldest Operating Weekly Newspaper

Owners/Publishers:

Susanne Hill & Erin Leonard

Editor: Abigail Dennis

Director of Sales & Marketing:

Susanne Hill

Art Director: Erin Leonard

Circulation Manager: Kayla Way

Staff Writer/Projects Assistant: Caitlin Avey

Contributors:

Gail Banks, Keith Axberg, Gen Pierce, Steve DiGiovanna, Art Kehler, Stacy Gatewood, Kelley Knack, Nancy Nesbit, Tammy Wham, Christopher Mumme, Matt Hill, Gerry Mooney

ENNIS, MONTANA

- Madisonian Editorial Policy -

Editorials are intended to acquaint our readers with the Editor's viewpoints on matters of public importance. Guest editorials and letters from readers (Letters to the Editor) reflect the opinion of the writers and do not necessarily reflect the opinion of the Editor or the staff of *The Madisonian*.

- Press Release Policy -

•*The Madisonian* staff will give all press releases full consideration, but ultimately retains the authority to determine whether or not to publish releases.

•Content must be factual and objective.

•Content must not contain advertising language (such as "call now," "to buy tickets for," "now showing,") or include pricing.

•Items of a general business interest are appropriate for advertising—see advertising policy and current rates.

•Content must not be derogatory to competing companies or organizations.

•Content may only be submitted and published once.

•There are no guarantees that press releases will be published.

•*The Madisonian* may edit submissions for grammar and content.

•*The Madisonian* reserves the right to make all determinations relative to the above policy.

- Letters to the Editor/Readers Speak Policy -

The Madisonian encourages the opinions of readers on public issues and matters of local concern. Letters must be close to 350 words. Please include the writer's name, address and phone number. *The Madisonian* reserves the right to edit content for grammar, good taste and libel. We also reserve the right to reject or delay publications.

Announcements and letters of a commercial nature will not appear in this column.

- Display & Classified Advertising Policy -

The Madisonian accepts most advertising, but may turn away any advertisement for any reason. It is up to us to decide on placement and content acceptability.

The advertisements in this publication are not necessarily the opinion of or supported by *The Madisonian*.

Please note: Our client information is confidential.

~ Subscription Rates ~

In-State - \$35.00/1 year or \$60.00/2 years • Out-of-State - \$45.00/1 year or 75.00/2 years (e-Edition complimentary with print subscription)•

\$30 - e-Edition only •\$40 - 6 mos. print/1 year e-Edition

Postmaster: Please, Send Address Changes to:

The Madisonian, P.O. Box 365, Ennis, MT 59729

Phone 406-682-7755

Toll Free 1-888-238-7849

email: editor@madisoniannews.com

Hours of Operation:

Monday - Friday ~ 8:30-Noon & 1-5 - Unless Notified Otherwise



Abigail Dennis/
The Madisonian

Construction is nearly complete on the Hebgen Dam intake and Northwestern Energy will begin working on the spillway soon.

Hebgen Dam operations update

Submitted by Butch Larcomb
NORTHWESTERN ENERGY

Current conditions:

NorthWestern Energy manages the Hebgen Project taking into account current and previous month's stream flow, precipitation and required pulse flow requirements downstream. Inflow for the month of July to date has averaged 67 percent of normal while June flows were 48 percent of normal. The precipitation in the Madison basin averaged 130 percent to date in July while June precipitation was only 44 percent of average. Hebgen Lake elevation is at 6,533.72 feet as of July 24, which is 1.15 feet from full pool. With the hot weather during the first part of the month, pulse flows were required 11 days out of the first 12 days in July. Hebgen outflow averaged about 1,020 cubic feet per second for the first week of July followed by approximately 915 cfs during the second week.

Cooler weather, which reduced the pulse flow requirements, allowed reductions to the current outflow level of 822 cfs at Hebgen. At Kirby, the USGS gauge below Hebgen, flow was at 937 cfs as of July 24.

Forecast:

Managing Hebgen outflow to provide downstream minimum flows, refill Ennis Lake from thermal pulse flow and irrigation withdrawal drafts is challenging this time of year. Pulse flow requirements typically reduce as the days become shorter and nights become longer (mid-August). Pulse flows reduce lower Madison River water temperature for fisheries protection while maximizing water conservation. Taking into account our FERC license requirements, the daily operation of the Hebgen and Madison hydro projects are subject to constant monitoring, re-evaluation and collaboration with applicable agencies. Appropriate operational changes will be made, as necessary.

Construction update:

NorthWestern Energy's work at Hebgen Dam on the intake rehabilitation project has continued this year since early January. Work from now through the summer is directed towards completing the installation of all of the gates and the operating equipment, electrical installation, controls and automation, the operations building and starting up and testing all operations. At the point in the intake rehabilitation project when gates are secured, work will begin to disassemble and remove the large cellular cofferdam in front of the intake structure. In early November when the cofferdam removal is estimated to be complete, the river flow will be immediately moved to the new deeper intake gates. Following discussion with Montana Fish, Wildlife and Parks, the sequence of construction and lake temperatures at that time of year will have no significant downstream water temperature ef-

fects as a result of this change.

Concurrently with the removal of the cofferdam in front of the intake, construction of a new cofferdam will take place in front of the spillway at the other side of Hebgen Dam. Much of the materials from the intake cofferdam will be re-used to construct this new cofferdam. The spillway cofferdam is needed to isolate the spillway from the reservoir for 2016. Beginning early in 2016, NorthWestern Energy will demolish and completely replace the spillway. The spillway replacement project is expected to be completed by the end of 2016.

NorthWestern Energy will provide a Hebgen operations update to interested stakeholders and the local media on a monthly basis throughout the summer months. For more information, contact Claudia Rapkoch, Director, Corporate Communications, NorthWestern Energy, (866) 622-8081.

WE OFFER COMPLIMENTARY OBITUARIES

Guidelines: Must be 450 words or less and one photo. (Otherwise, it will be 25 cents per word thereafter)

Please call or email:
682-7755 or
editor@madisoniannews.com

Get Results.

s.hill@madisoniannews.com

Serendipity GIFTS & COFFEEHOUSE 842-5008 • 105 N. MAIN ST. SHERIDAN, MT

Specials—August 2015 Our fresh soups will be prepared on Monday, Wednesday and Fridays.

MON	TUES	WEDS	THURS	FRI
3 Cheesy chicken sub with crunchy coleslaw	4 Chicken taco with side salad	5 Baked deli focaccia sandwich with broccoli salad	6 Taco pizza	7 Tuna Melt with chips
10 Berry turkey sandwich with broccoli salad	11 Beef fajita salad	12 Steak burritos with pasta and bean salad	13 Italian beef hoagie with chips	14 Chicken caesar with pasta toss
17 Tex-Mex pita with side salad	18 Hot swiss chicken sandwich with vanilla fruit salad	19 Turkey focaccia club with grapes	20 Chicken pesto pan pizza	21 Egg salad croissant sandwich with chips
24 Swiss & sour meatloaf sandwich with potato salad	25 Chicken noodle stir-fry	26 Shrimp salad	27 Chili nachos	28 Chicken salad croissant sandwich with chips
31 Taco salad wrap with spanish rice				

ALTACARE of Montana



"Kids are our business"

POSITIONS AVAILABLE FOR THE 2015-2016 SCHOOL YEAR

BEHAVIORAL INTERVENTION SPECIALIST POSITIONS IN PARTNERSHIP WITH THE FOLLOWING SCHOOL DISTRICTS WHITEHALL, ENNIS and BOZEMAN

The following positions are available within our Comprehensive School and Community Treatment program and will provide Mental Health Counseling to school age SED youth in a school setting. The behavioral intervention specialist assists in providing therapy and the implementation of treatment plans for school based children and their families. Working as a team (that comprises of a therapist and behavioral intervention specialist) in partnership with the school during the regular school year and summer programs as well. Altacare of Montana offers competitive salaries and benefits.

BEHAVIORAL INTERVENTION SPECIALIST Provides direct care for individuals and groups of select children in the Altacare Program. Previous experience in related field and/or bachelor's degree preferred but not required.

Please download application material from Altacareofmontana.com website and submit completed application, along with cover letter, and resume to: Kathy Ogrin, Human Resource Manager, Altacare of Montana, 3738 Harrison Ave., Butte, MT 59701. EOE Phone: (406) 497-7905 Fax: (406) 497-7916. Email: Kathy.Ogrin@acadiahhealthcare.com

& MORE NEWS:

SWEET, SWEET SUMMERTIME

Hi readers,

What is it about summertime in Montana that's so special? I've been thinking about this question and, to be honest, summer has always been my least favorite season. Yet, as soon as April rolls around I find my excitement building.

I think it's the "greening" and the "warming," combined with the burst of activity ... there's something to do every day. One pain-in-the-butt part of summer is that there's too much going on for the newspaper to cover every event. I'm running from Twin Bridges to Ennis and then south past Cameron any given day and I still feel like I'm missing things I would like to photograph, write

about and share with all of you.

In my humble opinion, fall has the best weather, followed closely by spring. And I love the consistency of winter, where I know every car on Main Street when I drive through town. But I have to admit, there is something incredibly alluring about the hustle and bustle of summer. And sure, when it's Fourth of July weekend in Ennis and I can't make a left turn on Main Street, I get a little frustrated, but then I stop and remember that summer is the time we get to show off Madison County – it's the time of the year when people come get a taste of how we live and how fortunate we are.



And, man, I like to show this place off. I love when I have friends from my home state of Kansas

come visit. There are specific areas I always highlight when I have guests for a weekend. We go

to Cliff and Wade lakes. We hit up the Ruby Reservoir, and drive into the Upper Ruby. We always stop in Virginia City – usually for some ice cream. When I have more than a short weekend, I make it a point to drive my visitors around the loop, starting in Ennis and winding north through the Ruby Valley before turning back south at Cardwell and meandering home.

My favorite thing about touring "out-of-towners" around this area is the selfish benefit I get from it – when I look at the Tobacco Roots from Sheridan for the first time through their eyes, or when I roll around a bend in the road and they spot Pony, their enthusiasm and

appreciation helps me remember the greatness of where we get to live.

"Do you ever get tired of it?"
"Do you ever forget how beautiful it is?"

"Do you ever get used to it?"
No, no and maybe a little. I love this place in all seasons. I know it is beautiful. But sometimes I need to be reminded that it's truly exceptional, spectacular and one-of-a-kind.

So, cheers to sweet, sweet summertime, and reminding ourselves that Madison County rocks!

Abigail

FLOATING FLOTILLA

Caitlin Avey
THE MADISONIAN
news@madisoniannews.com

Twin Bridges celebrated their alumni weekend in conjunction with the 4-H Floating Flotilla event this past Saturday at the Madison County Fairgrounds. Attendees enjoyed everything from the farmers market and horseshoe tournament, to a poker run and auto show before the main parade float down the river.

Caitlin Avey/The Madisonian
The Twin Bridges Farmers Market helped kick-off the weekend's events with vendors from all over the valley.



Caitlin Avey/The Madisonian
Joe Witherspoon, center, raises the flag at Saturday's Floating Flotilla event in Twin Bridges.



Photo courtesy Gail Banks
Coneheads float the river during the parade.



Photo courtesy Gail Banks
The Ruby Valley Red Hatters Club enjoys the river parade.

Cowboy Poetry Night at the Ennis Rodeo Grounds

Submitted by Kyle Nelson
ENNIS RODEO INCORPORATED

On Saturday, July 18, around 140 people gathered at the Ennis Rodeo Grounds for Cowboy Poetry Night.

The event included a ranch style dinner, a live and silent auction, live music and cowboy poetry. Six poets participated – Chad Coffman from Ennis, Janet Hill from Norris, Matt Buckley from Butte, Frank Giblin from Ennis, Jan Smith from Ennis and Rick Ericksen from Ennis.

This year marked the third consecutive year for Cowboy Poetry Night, put on by Ennis Rodeo Incorporated.

Proceeds from the event went to maintaining the rodeo grounds.



Photo courtesy Gerry Mooney

Chad Coffman from Ennis participates in the third annual Cowboy Poetry Night at the Ennis Rodeo Grounds.

How well do YOU know Madison County?

THIS WEEK'S CONTEST IS SPONSORED BY

Shovel & Spoon
Sheridan, MT
and
Maple's Coffee
Ennis, MT



Nobody guessed this road last week – c'mon guys! We know you can do it. Here's a hint: if you're from Twin Bridges, you should recognize this! Call 682-7755 with your guess!

TIMBER

Wind storm in Ennis blows building over



Caitlin Avey/The Madisonian

The framework for a new set of shop and rental units was blown over in a storm that ran through the Madison Valley Tuesday, July 21. Construction workers said the framework for the new building was nearly complete and only one wall of the frame was not destroyed.



REAL ESTATE CORNER

Dive into the area's real estate options!

MAKE SURE TO FILE A HOMESTEAD EXEMPTION!

By Bill Mercer
RE/MAX Mountain Property

What is a Declaration of Homestead Exemption?

In Montana, up to \$250,000 of a home's assessed value can be protected against most creditors' claims, provided that the owner has filed a homestead exemption.

For example, if a person incurs an overwhelming gambling debt, up to \$250,000 in value of his/her home would still be sheltered.

See the following website for more information: <http://store.msuextension.org/publications/FamilyFinancialManagement/MT199815HR.pdf>

What is considered to be a Homestead?

A homestead is the house or mobile home that a person lives in and land on which it sits. The property must be a person's primary residence for it to be eligible for a homestead declaration. The term homestead also includes any improvements such

as a fence. Home furnishings and appliances are not eligible.

The maximum value of exempt property for a homestead declaration is \$250,000. Prior to July 1, 2007, the amount was \$100,000. The legal value of the property is the amount appearing on the last completed county assessment roll at the county treasurer's office.

How do I file a Homestead Exemption?

Montana does not have a standard homestead declaration

form. Consult your attorney to help execute a homestead declaration or contact our office at 406-682-5001 for more information. We have Madison County forms available at our office and we have a Notary available as well. After the homestead declaration document is completed, signed and notarized, it should be filed in the office of the clerk and recorder in the county in which the home or mobile home is located. If married, both spouses should sign the declaration.



Bill Mercer

43 Hilltop Trail Ennis, MT



An independently owned and operated franchisee of BHH Affiliates, LLC. Berkshire Hathaway HomeServices and the Berkshire Hathaway HomeServices symbol are registered service marks of HomeServices of America, Inc. Equal Housing Opportunity.



Rikki Dilschneider
-BROKER-

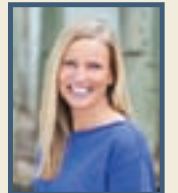
Unique modern masterpiece, set in the heart of Gravelly Mountains, focuses all its windows & 4 decks on massive Madison River Valley views. The palette, direct from the earth where it is perched, creates a harmony that is unsurpassed. Blond basswood, rich Brazilian cherry, cobalt blue cabinets, blown glass basins, river pebbled stone bath, massive sky light through the center - every turn offers a new feature. Detached studio/guest cabin & large shop add function to this architecturally designed home. Exceptional home! Price has been reduced by \$100,000!

New Price! \$887,000
MLS#205707



BERKSHIRE HATHAWAY
HomeServices
Montana Properties

406-581-5155
rikki.dilschneider@gmail.com
101 E. Main Street,
Ennis, MT 59729



BERKSHIRE HATHAWAY
HomeServices
Montana Properties



ERA Landmark
ARROW REAL ESTATE

Offices in Bozeman, Big Sky, Livingston & Ennis

SPHINX MOUNTAIN 20-ACRE LOTS \$30,000 TO \$65,000!



US HIGHWAY 287 NORTH, CAMERON
\$950,000 | #207640 | MONTANA ACREAGE

2bd, 2ba, 1,200± sf, open floor plan with cathedral aspen ceilings, cherry cabinets, marble counter tops, and hickory flooring. 160± acres with no covenants located just a mile south of Cameron, offers privacy and borders state land, magnificent views of Sphinx Mountain and Indian Creek Ditch runs through the property



MOUNTAIN VIEW ROAD, SHERIDAN
\$460,000 | #198432 | 842.5650

3 bd, 3 ba 3,460± sf 10± acres, outdoor fireplace & patio, master suite w/ tiled shower, & infinity tub; walk-in master closet; kitchen has granite countertops, gas cook top, wine cooler, side-by-side fridge & freezer; gas fireplace, lg laundry rm



ANTELOPE MEADOWS ROAD, ENNIS
\$285,000 | #207432 | HORSES WELCOME

4bd, 3ba, 4,068± sf home on three levels, extra large master suite with jetted tub in bathroom, open floor plan with cathedral ceilings and massive great room, newly finished basement, 2.7± acres allows room for your horses, mature trees and fenced pasture



HIGHWAY 287, ENNIS
\$189,000 | #206688 | NO COVENANTS

30± acres located just 3± miles west of Ennis with direct access to hwy 287, this highway frontage property has no covenants and offers endless commercial opportunities, fantastic views of the Madison Range, year round access, power across highway



MADISON AVENUE, ENNIS
\$300,000 | #200020 | RENTAL HISTORY

A 4-plex with strong rental history, located on the outskirts of town near post office but short drive to amenities, mature trees and sprinkler system, each unit is spacious and includes kitchen, 2 bd, 1 full ba, living room, washer/dryer hookups, plenty of convenient parking



HIGHWAY 287, SHERIDAN
\$54,900 | #203772 | 684.5686

.97± acres with town amenities, but a country atmosphere, this build site could be used as residential or commercial, water & sewer run past the property, could be easily connected; bordering neighbors have electricity, DSL and natural gas



CUSTOM LOG HOME IN JEFFERS

High-quality home of 3,000 SF, 3 BR, 2.5 BA, office, inside/outside FP, party deck, 28'x50' garage/shop, cabin, fenced orchard on 5 fenced acres. 38 Cottonwood Lane, Ennis \$998,000 (MLS #199572)



BEAUTIFUL CUSTOM HOME

Architecturally designed 3,700 SF with 1,400 SF unfinished basement, 3 BR, 2 BA, on 5+ fenced acres with great views. Tremendous value. 25 Diamondback Road, Bull Wheel. \$589,000 (MLS# 203321)



INCREDIBLE VIEWS

From this 4 BR / 4 BA home on 20 acres just 5 miles from town but quite remote. Perfect for vacations or full-time living. 134 L&M Ranch Road, Ennis. \$425,000 (MLS #207662)



MOUNTAIN HOME WITH VIEWS

Comfortable, 3,634 SF home, 3 BR/3 BA, FP, family room + 2-car garage, horse stall & corrals on 20 acres. 99 Elk Hills Road, McAllister. \$620,000 (MLS #189543)



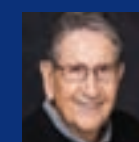
OUTSTANDING WESTERN-STYLE HOME

Top-quality 2,480 SF, 3 BR/2 BA, FP, gourmet kitchen, 3-car garage on 7 fenced acres. Good horse property & close to the river. 12 Stubborn Ox Lane, Bull Wheel. \$587,000 (MLS # 191065)



READY TO MOVE IN

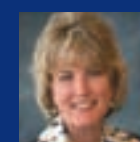
This well-built/maintained home of 1,760 SF, 3BR/2BA, has large deck, 2-car garage, and close to schools and downtown. 435 Beaverhead Street, Ennis. \$274,900 (MLS #206431)



Don Bowen
ABR, Broker
581-2991
don@eralandmark.com



Toni Bowen
ABR, Broker
570-9233
toni@eralandmark.com



Robyn Erlenbush
CRB, Broker Owner
556-5052
robbyn@eralandmark.com



Debbie Reilly-Richardson
Office Manager
682-4290
debbie@eralandmark.com

406-682-4290
arrowreal.com

ERA Landmark Arrow Real Estate | 219 East Main Street, Ennis, MT 59729

BHHSMT.COM

ENNIS: 406.682.5002 | SHERIDAN: 406.842.5650 | TWIN BRIDGES: 406.684.5686

© 2015 BHH Affiliates, LLC. An independently owned and operated franchisee of BHH Affiliates, LLC. Berkshire Hathaway HomeServices and the Berkshire Hathaway HomeServices symbol are registered service marks of HomeServices of America, Inc. Equal Housing Opportunity.



Come and enjoy the good life at this very special Home that sits on 20 acres in Beautiful Madison River Ranches. View the Majestic Madison River from your own screened in porch while you sip on your morning coffee.

This property is located behind a locked gate with HOA's that include several amenities including 1 mile of private access on the Madison for fishing, Cliff and Wade Lakes are just a couple of miles away where you can enjoy fishing from your boat or from the shore. Forest access is one property West with miles of trails for horses or hiking.

The property hosts many visitors including but not limited to: Deer, Antelope, Moose, Elk, Wolves and an occasional Bear who meanders on the property.

There is room for horses in the barn and guests in the bunkhouse. Snowmobile into the property and share an old fashioned Christmas with family and friends. The log house has much attention to detail with custom accents throughout.

Some of the logs in the home come from West Yellowstone and Big Sky.

Magnificent views and trees surround this breathtaking property.

Possible adjoining 20 acres also available for sale.

This is a true Montana property with a true Montana feel. Do not miss out on this one of a kind.

Call Holly Driskill to take a look.

BERKSHIRE HATHAWAY
HomeServices
Montana Properties



Holly Driskill, Sales Associate

An independently owned and operated franchisee of BHH Affiliates, LLC. Berkshire Hathaway HomeServices and the Berkshire Hathaway HomeServices symbol are registered service marks of HomeServices of America, Inc. ® Equal Housing Opportunity.

406.451.3527 | 101 E. MAIN STREET, ENNIS, MT 59729 | HOLLY.DRISKILL@BHHSMT.COM

MLS# 201708 • 308 W FAGIN STREET • PRICE REDUCED! \$174,995



If you are ready for home ownership and want a low maintenance home with no updating needed, this is the home for you. You will be drawn to the home thanks to the amazing new features to the exterior. The interior is new from floor to ceiling with great amenities. This home is ready for someone to move in and enjoy all the new features it has to offer. This is a must-see to appreciate home as there are too many upgrades to list.

BERKSHIRE HATHAWAY
HomeServices
Montana Properties



Tanya Matson, Sales Associate

An independently owned and operated franchisee of BHH Affiliates, LLC. Berkshire Hathaway HomeServices and the Berkshire Hathaway HomeServices symbol are registered service marks of HomeServices of America, Inc. ® Equal Housing Opportunity.

406.580.6987 | 101 E. MAIN STREET, ENNIS, MT 59729 | TANYA.MATSON@BHHSMT.COM

The Real Estate Corner will appear every other week throughout the year.



Where's Melinda?



As I gaze into my "Crystal Ball" trying to find the answers for you in regards to real estate.....it says - "It's an automatic "no" if you don't ask!!" All too often you might be afraid to approach lenders or sellers in fear that you might not have your dream come true. More often than not.....we can find a way to make it work. Whether it is adding to your portfolio of investment properties; buying your new home; or just an inquiry to see if you can - CALL ME!!! Let me turn your :(into a YES :) today!!!

- NEW** - 9+ acres with creek and easy access - \$90,000
- NEW** - Large home close to town that allows horses - \$285,000
- NEW** - Bare land parcel with stocked fishing pond on adjacent parcel - \$69,900
- NEW** - 16+ acres with creek, views, and power - \$179,900
- NEW** - 10+ acres at Airpark for only - \$49,900

Melinda Merrill, Broker

An independently owned and operated franchisee of BHH Affiliates, LLC. Berkshire Hathaway HomeServices and the Berkshire Hathaway HomeServices symbol are registered service marks of HomeServices of America, Inc. ® Equal Housing Opportunity.

BERKSHIRE HATHAWAY
HomeServices
Montana Properties

406.596.4288 | MELINDA.MERRILL@BHHSMT.COM

USE THIS "REAL ESTATE" TO SELL YOUR REAL-ESTATE AFFILIATED PRODUCT OR SERVICE!



CALL SUSANNE AT 682-7755

SHERIDAN 2015

summer festival

JULY 31ST - AUGUST 2ND

RAY SILVE MEMORIAL BASEBALL PARK

friday
Dinner in the Park 5 - 7 PM
Live Music by The Trubelos - Starts @ 7 PM ★ Beer Gardens

saturday
Kenny Steiner Memorial Car Show ★ Registration 7-10 AM ★ Trophies 3 PM
\$20/Car - \$5 Each Additional Car ★ All Proceeds to SVFD
Contact Jordan @ 842-7110

Parade Line Up @ 10 AM ★ Parade Starts @ 10:30 AM
Kickball Tournament after Parade - Kids @ 1:00 PM ★ Pre-Register Teams
Contact Maria @ 842-5542 or maria_bartoletti@hotmail.com

Horseshoe Tournament ★ Lunch in the Park

50/50 ★ Door Prizes ★ Poker Run in the Park 1-3 PM
Reunion Celebration 5:30 PM @ Main Street Park
Contact Janet @ jmarsh@3rivers.net

sunday
Jackson's Garden - Non-Denominational Services 9 AM
Brunch 10 AM - Noon

QUESTIONS: CONTACT JANNA VERHOW @ 842-7672



UNDER NEW OWNERSHIP



MONTANA MAC'S

(in old Mill Creek Inn building)

SUNDAY - THURSDAY: 7 AM TO 9 PM
FRIDAY - SATURDAY: 7 AM TO 10 PM

Mac-Attack Burger Over 1 lb of Meat!

Serving delicious Breakfast • Lunch • Dinner

Baby Back Ribs! Thursday Nights
Surf & Turf! Friday Nights
Prime Rib! Saturday & Sunday

102 Mill Street • Sheridan • 406-842-7298



**MAHALO NUI LOA FOR
10 GREAT YEARS!**

We Wish to Thank
Our Community, Staff (both past & present), Business Associates, Friends, & Family for the Support & Good Times.

We couldn't have done it without you!
With Much Aloha,
Paula & Bill Kinoshita

101 E. 5th Avenue • Twin Bridges, MT
www.theoldhotel.com • 406-684-5959



Photo courtesy Roseann Troyer
The Ruby Reservoir from one of our spontaneous bus rides

BIG SKY
CLASSICAL MUSIC FESTIVAL

August 7-9, 2015
Big Sky, Montana

Music Director: **Eric Funk**
Guest Conductor: **Peter Bay**
Join us for this fifth annual event!!

Friday, August 7
6:00 p.m. • Town Center Park
WindSync Wind Ensemble
Join us outdoors in Town Center Park for this **FREE** performance!
"Revolutionary chamber musicians," *Houston Chronicle*

Saturday, August 8
7:30 p.m. Warren Miller Performing Arts Center
Rachel Barton Pine & Matt Haimovitz
With special guests Angella Ahn, David Wallace, Gillian Gallagher, and Kathe Jarka performing the Brahms *String Sextet* and more!
Tickets at www.warrenmillerpac.org

Sunday, August 9
5:00 p.m. **Big Sky Festival Orchestra** with Maestro **Peter Bay** (Austin, Tx)
"Symphony No. 8" **Beethoven** **FREE!**
"Egmont Overture" **Bozeman**
"Brahms Double Concerto in A minor, Op. 102" **Brahms**
Featuring soloists Rachel Barton Pine and Matt Haimovitz. The best symphony event in Montana this summer! Town Center Park, **FREE!!**

www.bigskyarts.org



Enjoying June at TRMCC

Submitted by Roseann Troyer
TOBACCO ROOT MOUNTAINS
CARE CENTER

June was jam packed with all types of activities at the Tobacco Root Mountains Care Center. On the second, we had a very productive resident council meeting and set up several events for July. The morning of June 4, the Silver Bow Stompers showed us their dance moves to upbeat music. They filled our spacious dining room with sounds of fun. That afternoon, the Methodist minister gave us a bible service; it was his last at the care center. He has taken another job and will be leaving. He will be missed.

On June 5, the sounds of Boots and Friends filled our day room. The group hails from Dillon and old time country is what they play. Several residents commented on enjoying that good old music. The group promised to return. June 11, the Day Spring folks came and shared bible readings with us and we sang several hymns. Cold beverages, corny jokes and flavorful treats were all offered at happy hour, which was on June 12. Grilled burgers, charred dogs, homemade salads and cold water were the fare at our Father's Day BBQ on the 17th. We invited families and we had one of our best turnouts ever. The food was exceptional, people enjoyed socializing and the weather could not have been any more perfect. We served close to 100 folks at lunchtime. The next week, Gail Nelson, activities assistant, attended and passed the basic activity director course that was held in Helena. Congratulations Gail. Aroma from fresh baked dill cottage bread filled our care center the afternoon of the 26th. It was moist and delicious – yes, people could have seconds. A going away BBQ was held for John Semingson on June 29. We are sad to see him leave, but as he said, he is just going across the ditch to the Ruby Valley Hospital. Our June birthday party was held on the last day of June. Three residents had birthdays, Lilly Forwood, Dick Payment and Mickey Brunzell. The Buds and Blooms Garden Club hosted the festive affair. Ladies from the club who helped serve and sing were Arlene Barnosky, Alice Rheimard, Dorothy Brown, Dorothy Bradley and Nancy Greutman. The ladies served fresh strawberry shortcake. Lilly received a custom made fidget blanket. Dick was given a box of chocolates and a movie about martial arts, while Mickey received one of his favorite's treats, chocolate covered orange and raspberry sticks. The Cottage Floral donated colorful fresh flower corsages for our honored birthday folk. We are ready for July.

OUR READERSHIP IS UP OVER 30%

Take us for a
TEST DRIVE!

New Advertisers get
25% OFF
display ads during the month of August!

**CONTACT SUSANNE:
596-0661 OR
S.HILL@MADISONIANNEWS.COM**



SOUTHMONT FORM & FINISH
FULL SERVICE CONCRETE CONTRACTOR

- Pump Truck Service • Ground Heater Rental
- Footings, Walls, Slabs • 60' Boom Truck Rental
- Commercial & Residential Concrete
- Sprayed Foundation Coating & Waterproofing
- Decorative/Custom Concrete/Stamped & Overlay

FREE ESTIMATES - Licensed & Insured
Serving All of Southwestern Montana

Mick & Suzanne Hubner - Bob Hubner
Mob.: 406-925-1864 - Phone: 406-682-7253 - Fax: 406-682-5425
e-mail: hubner@3rivers.net - Ennis, Montana

Bale of Hay Saloon
BALE BEER FEST
w/ Chad Ball playing Folk, Blues, Rock & Country
Sat Aug 1st noon -7pm
Montana's Oldest Watering Hole - Virginia City
www.baleofhaysaloon.com



FROM VIRGINIA CITY TO NEW YORK AS A PHARMACIST



Photo courtesy of Linda Roberts

Dara Roberts Morgenson, daughter of Chris and Linda Roberts of Virginia City, recently graduated from the University of Nebraska Medical School with a doctor of pharmacy degree. She will now do a residency at a V.A. hospital in Albany, N.Y. Her husband, Eric, is also in Albany pursuing a doctorate of history degree at State University of New York.

BARNEY CONSTRUCTION, INC.
WHEN QUALITY COUNTS.

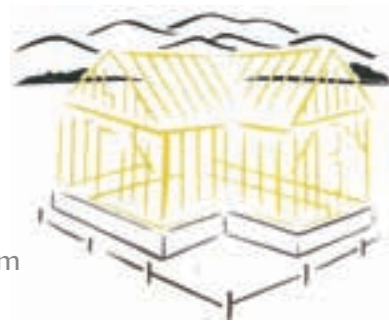
Residential Contracting
406-581-9388
barneyconstruction@yahoo.com

DOLPH CONSTRUCTION
DENNIS K. DOLPH & DAN MAGER
Master Carpenters

Custom Framing
Remodeling
Additions
New Construction
Log Homes

Cell (406) 539-7553 or (406) 531-0085
dolphdennis@yahoo.com

OVER 36 YEARS EXPERIENCE *Licensed & Insured*



BATS R Us

ALPINE ANIMAL DAMAGE CONTROL
Live Trapping & Relocation

Squirrels - Skunks - Birds - Raccoons - Snakes
Bats - Beavers - Coyotes - Opossums - Otters
Odor Remediation - Attics & Crawl Spaces

Bruce Bartow (208) 521-4235



Insurance rates going up? Are you curious whether you could be saving money? Call us....we'll do the shopping for you!

Dean Derby Insurance Agency - 406-556-0893
Farm/Ranch. Autos. Home. Business.

Madison Valley Plumbing & Heating

Serving Madison County for over 30 years

- New Construction
- Remodels
- Service Work
- Winterization

Jerry Singleton
Master Plumber #811
Phone: 406-682-7913



P.O. Box 1115 • mvp@3rivers.net • Ennis, MT 59729

Sherwood Swanson Drywall Inc.

Hanging Finishing
Custom Textures Painting
Office: (406)682-5438 Cell: (406)599-3524

Results from 3Rivers Charity Scramble Golf Tournament

Submitted by Patrick Stoltz
MADISON MEADOWS GOLF COURSE

Patrillo and Randy Brown
Fourth place – 55.85 – Morrill Stout, Sue Stout, Dwayne Roedel and Rex Bonnell

There was a great turnout at the 3Rivers Charity Scramble Golf Tournament and several thousand dollars were raised for the Virginia City Volunteer Fire Department. Forty-eight players total played on a great day at the Madison Meadows Golf Course.



First place – 51.55 – Dan Dedman, Jr., Nick Anderson, Blake Amberson and Patrick Stoltz.
Second place – 52.55 – Laura Helling, Kevin Helling, Jessica DuFeu and Jason DuFeu
Third place – 53.3 – James Harris, Dillon Doane, Jason



Madison Valley Manor update

Submitted by Melody Clark
MADISON VALLEY MANOR
Recreation and rehab staff members teamed up to provide

fun and therapy for Madison Valley Manor residents. Darci Sgrignoli, occupational therapist, Melody Clark, activity director, Oakley Clark, ac-

tivity assistant, Moree Kimmel and Kaycee Hanson, volunteers, lead the parachute activity. Last week some of our residents enjoyed the BBQ

lunch provided by First Madison Valley Bank. They also went for some beautiful drives seeing wildlife, cows and calves and horses.

MADISON VALLEY ARTS FESTIVAL

Saturday, August 8th, 2015

AT PETER T'S PARK, ENNIS
10 AM - 4 PM

- JURIED ARTS AND CRAFTS
- LIVE ENTERTAINMENT
- DELICIOUS FOOD
- ART RAFFLE
- 50/50 CASH RAFFLE (drawings for both at 3:45 pm - do not need to be present to win)
- "MEET THE AUTHOR" BOOK SIGNING
- CHILDREN'S FACE PAINTING



Bozeman Deaconess
UROLOGICAL ASSOCIATES

NOW PROVIDING SERVICES IN ENNIS.



Gregory Pritham, MD



J. Bruce Robertson, MD



Bjorn Sauerwein, MD



Stewart Chumbley, FNP, BC

Bozeman Deaconess Urological Associates now provides services at Madison Valley Medical Center, at 305 N. Main St. Our urologists specialize in a full range of urological care including the treatment of prostate, kidney, adrenal, testicular and bladder cancers; sexual dysfunction; infections of the kidney, bladder, prostate and testes; male infertility; prostate disorders; kidney stones and urinary incontinence.

Call Bozeman Deaconess Urological Associates at (406) 414-5300 to make an appointment.

(406) 414-5300 | bdhg.org/urology

COMING SOON!



Dr. Jeff Squire
406-577-2380

222 E. Main St #1C
Ennis, MT

Offering comprehensive eye exams, quality eyewear, and a variety of contact lens options for all ages.

Conveniently located in the Lone Elk Mall on Main Street!

Call today to schedule your annual eye exam!



We appreciate your patronage and will work hard to maintain your trust.



OVER THE NEXT SEVERAL WEEKS YOU ARE GOING TO SEE A LOT OF CHANGES INSIDE ENNIS TRUE VALUE.

WE'RE EXPANDING INTO THE OLD RADIO SHACK LOCATION AS WELL AS MOVING SHELVES AROUND INSIDE THE STORE.

YOU CAN EXPECT TO SEE A LOT OF CLOSEOUTS AND A LOT OF NEW MERCHANDISE.

WE'LL KEEP YOU POSTED AS WE GO ALONG.



6 SUNRISE LOOP, ENNIS, MT 59729 | 682-4015

MADISON COUNTY SHERIFF'S DISPATCH LOG

July 12 – July 25, 2015

July 12
Unfounded 911 Call in Ennis
Traffic Complaint on MT Hwy 41 S MM 19 Twin Bridges
Accident with Injuries on MT Hwy 287 MM 20 Alder
Agency Assistance on MT Hwy 287 MM 20 Alder
Scam Complaint at Ruby Valley Hospital Sheridan
Threats/Harassment in 600 Blk Madison Ave Ennis
Public Safety Complaint in 2200 Blk MT Hwy 287 Sheridan

July 13
Accident with Damage on Seyler Ln Twin Bridges
Disturbance at Daylight Village Virginia City
Animal Problem in Ennis
Unfounded 911 Call on MT Hwy 287 MM 20 Virginia City
Trespassing Complaint on Uline Bench Rd Cameron
Traffic Complaint on MT Hwy 41 S MM 15 Twin Bridges
Alarm in Virginia City
Citizen Assist in 600 Blk Madison St Ennis
Animal Problem on W Wallace St Virginia City
VIN Inspection on S Bluebird Ln Ennis
Unfounded 911 Call in Virginia City
Unfounded 911 Call in Cameron
Citizen Assist Out of County
Child Custody Dispute on Loch Leven Ln Silver Star
Privacy in Communications on Ruby Rd Alder

July 14
Alarm in 100 Blk W Main St Ennis
VIN Inspection in 200 Blk E 9th Ave Twin Bridges
Citizen Assist in Harrison
Suspicious Person/Circumstance in 800 Blk Mirza Way Ennis
Traffic Complaint in Cameron
Traffic Complaint on MT Hwy 287 Alder
VIN Inspection in 300 Blk Steffens St Ennis
Alarm in 700 Blk E Bench Rd Twin Bridges
Unfounded 911 Call in Norris

July 15

Citizen Assist on Spring Creek Rd Whitehall
Citizen Assist on Rainbow Loop Rd McAllister
Unfounded 911 Call in Virginia City
Suspicious Person/Circumstance on Wisconsin Creek Rd Sheridan
Citizen Assist Out of County
Child Custody Dispute on Loch Leven Ln Silver Star
Traffic Complaint on MT Hwy 84 MM 1 Norris
Traffic Complaint on US Hwy 287 MM 16 Cameron
Traffic Complaint on MT Hwy 287 MM 28 Sheridan

July 16
Agency Assist in 600 Blk Madison St Ennis
Citizen Assist in 400 Blk N Meadow Creek Rd McAllister
Privacy in Communications on View Ln Ennis
Agency Assist on MT Hwy 87 at ID/MT border Cameron
Alarm on Boulder Lakes Rd Silver Star
Fire – Fire Alarm/Smoke Alarm on Varney Rd Ennis
Traffic Complaint on Pony Rd MM 2 Pony
Dog Complaint in 600 Blk Beaverhead St Ennis
Welfare Check on Antelope Meadows Rd Ennis
Suspicious Person/Circumstance in 200 Blk E Main St Ennis
Coroner Call on Tuke Ln Sheridan

July 17
Accident with Damage on MT Hwy 41 N Twin Bridges
Alarm in 300 Blk Madison St Virginia City
Dog Complaint in 100 Blk Park Ln Sheridan
Traffic Complaint on US Hwy 287 MM 59 Ennis
Animal Problem on Dude Ranch Trl Ennis
Traffic Complaint on MT Hwy 84 MM 23 Norris
Suspicious Person/Circumstance in Hells Canyon Twin Bridges
Unfounded 911 Call in Virginia City
Animal Problem near Sure

Shot Lakes McAllister
Animal Problem on MT Hwy 41 MM 14 Twin Bridges
Alarm in 4900 Blk US Hwy 287 N Ennis
Theft Complaint in 100 Blk Hutchins Ln Ennis
Alarm at Twin Bridges
Airport Twin Bridges

July 18
Alarm on US Hwy 287 Ennis
Suspicious Person/Circumstance on E Main St Ennis
Welfare Check in Ennis
Disturbance in Ennis
Citizen Assist in 100 Blk Pony St Pony
Theft Complaint in 300 Blk Madison St Harrison
Traffic Complaint in 300 Blk E Main St Ennis
Assault on US Hwy 287 Ennis
Alarm in 300 Blk S Meadow Creek Rd McAllister
Unfounded 911 Call in 500 Blk Jack Creek Bench Rd Ennis
Public Safety Complaint in 100 Blk N Bridge St Twin Bridges
Suspicious Person/Circumstance at Laura Ln and Otis Ave Ennis
Public Safety Complaint on US Hwy 287 MM 13 Cameron
Traffic Complaint on US Hwy 287 MM 21/22 Cameron
Traffic Complaint in Ennis
Disturbance at Warm Springs Boat Launch on MT Hwy 84 Norris
Assault in 300 Blk N Main St Ennis
Traffic Complaint on MT Hwy 287 MM 14 Virginia City
Citizen Assist on Old VC Hwy Ennis
Traffic Complaint on MT Hwy 41 S MM 13 Twin Bridges
Drug/Narcotic Activity on Laura Ln Ennis

July 19
Drug/Narcotic activity in Ennis
Disturbance in Ennis
Drug/Narcotic activity in Ennis
Disturbance in Ennis
Medical Aid in Ennis
Disturbance in Ennis
Accident with damage off Main St Ennis
Animal Problem on US Hwy 287 N MM 42 Ennis

Citizen Assist at Klutes Landing McAllister
Traffic Complaint on US Hwy 287 MM 19 Cameron
Medical Aid out of County
Traffic Complaint on MT Hwy 287 MM 27-28 Alder
VIN Inspection on Dyk Rd Harrison
Agency Assist in Big Sky
Animal Problem at Old Mill Rd & US Hwy 287 Harrison
Assault at Fagin St and First St Ennis
Disturbance at Upper Sure-shot Lake McAllister
Disturbance in 800 Blk Bauer Ln Ennis

July 20
Public Safety Complaint on US Hwy 287 MM 77 Harrison
Fire – Gas Leak/Odor in 400 Blk W Fagin St Ennis
Citizen Assist in Harrison
Accident with Damage at MT Hwy 41 N and MT Hwy 55 Silver Star
Citizen Assist at Sureshot Lake Campground McAllister
Public Safety Complaint between McAllister and Ennis
Accident with Injuries on US Hwy 287 MM 12 Cameron
Fire – Wildland at MT Hwy 87 and US Hwy 287 Cameron
Trespassing Complaint on E Idaho St Virginia City
Warrant for Arrest in Ennis
Unfounded 911 Call in 100 Blk Ballard Ln Ennis
Public Safety Complaint on US Hwy 287 MM 32 Cameron
Fire – Wildland in South Madison Cameron
Welfare Check on Cut-off Rd Waterloo
Traffic Complaint in 300 Blk Ennis Lake Rd Ennis
Medical Aid in Big Sky
Assault in 100 Blk S Third St Ennis

July 21
Suspicious Person/Circumstance in 600 Blk Beaverhead St Ennis
Traffic Complaint between Sheridan and Twin Bridges
Unfounded 911 Call in Virginia City
Threats/Harassment on

Rock Chuck Trail Ennis
Unfounded 911 Call in Ruby Valley
Wildlife Complaint on MT Hwy 287 MM 4.5 Ennis
Traffic Complaint on US Hwy 287 between Norris & Ennis
VIN Inspection in 300 Blk Shining Mtns Loop Ennis
Fire – Other at River of Gold Nevada City
Bail/Probation Violation on Wisconsin Creek Rd Sheridan
Animal Problem in Jeffers area Ennis

July 22
Accident with No Injury/Damage in 800 Blk MT Hwy 359 Cardwell
Bail Order Violation on Wisconsin Creek Rd Sheridan
Traffic Complaint in 900 Blk Jefferson St Ennis
Lost or Found Property in 500 Blk Jack Creek Rd Ennis
Traffic Complaint on Main St Ennis
Animal Problem in 1400 Blk MT Hwy 287 Virginia City
Animal Problem on Wet Georgia Rd Sheridan
Traffic Complaint on MT Hwy 287 MM 16 Nevada City
Scam Complaint in Ennis
No Contact Violation on Wisconsin Creek Rd Sheridan
Disturbance in 600 Blk Beaverhead St Ennis
Fireworks Complaint on Last Best Place Ennis

July 23
Accident with Damage on MT Hwy 287 MM 25 Laurin
Missing Person in 2300 Blk MT Hwy 287 Alder
Citizen Assist in Nevada City
Threats/Harassment in 2300 MT Hwy 287 Alder

July 24
Traffic Complaint on US Hwy 287 Harrison
Suspicious Person/Circumstance on Jefferson St Sheridan
Scam Complaint in 100 Blk N Meadow Creek Rd McAllister
Animal Problem on US Hwy 287 MM 58-59 McAllister
Traffic Complaint on

Main St Sheridan
Accident with Damage on MT Hwy 41 MM 26 Twin Bridges
VIN Inspection in 300 Blk Judy Ln Alder
Unfounded 911 Call in Virginia City
Alarm in 100 Blk Mill Gulch Rd Alder
Burglary in 600 Blk N Meadow Creek Rd McAllister
Public Safety Complaint on MT Hwy 287 MM 41 Sheridan
Vehicle Theft in Ennis
Criminal Mischief at Wade Lake Campground Cameron
Threats/Harassment in 400 Blk S Hughes St Virginia City
Missing Persons at Indian Creek Trailhead Cameron
Agency Assist on Sterling Rd Norris
Alarm in 100 Blk W Idaho St Virginia City
Fire – Smoke/Investigation at Sphinx Mtn and US Hwy 287 Cameron
Medical Aid at Main St and First St Ennis

July 25
Citizen Assist on US Hwy 287 MM 48 McAllister
Citizen Assist on Ke-arny Ln Sheridan
Suspicious Person/Circumstance on Brown Gulch Rd Nevada City
Threats/Harassment in 500 Blk E Madison St Virginia City
Citizen Assist in 300 Blk E Williams St Ennis
Wildlife Complaint in 100 Blk Mill St Sheridan
Suspicious Person/Circumstance on Mile Creek Rd Cameron
Traffic Complaint at US Hwy 287 and MT Hwy 87 Cameron
Medical Aid on Tex's Loop Alder
Theft in McAllister
Unfounded 911 Call in Ennis
Fire – Wildland on MT Hwy 41 Mm 53 Silver Star
Medical Aid on Wisconsin Creek Rd Sheridan
Wildlife Complaint at Varney Rd Ennis
Suspicious Person/Circumstance on MT Hwy 287 Ennis
Fireworks Complaint on Last Best Place Ennis

BLUE JEANS AND RODEO SCENES

SCHEDULE OF EVENTS

SATURDAY, AUGUST 8

4H Horse Show - 8 am

SUNDAY, AUGUST 9

Madison County Youth Rodeo: 10 am

WEDNESDAY, AUGUST 12

Madison County Barrel Racing: 6:30 pm
4H animal check in
Dog & cat shows

THURSDAY, AUGUST 13

Madison Co. Fair Opening Ceremony by the Veterans: 9 am (By the office)
Ladder Canyon Ranch Rodeo: 6 pm
The Kids Fun Zone
(by the River throughout the day)
Bingo (Pavilion): 12 pm-7 pm
Yankee Joe's Gemstone & Fossil Mining (Pavilion)

FRIDAY, AUGUST 14

NRA Rodeo slack: 8 am
The Kids Fun Zone
(by the river throughout the day)
Double Vision Magic Shows
(throughout the day) times (TBD)
Bingo (Pavilion): 12-7 pm
Kids Stick Horse Rodeo: 1 pm
(Park by the 4H building)
Police Dog Demonstration (Riverside Park): 2 pm
Pack Horse Demonstration (in Front of Steer Barn): 4 pm
Miniature Bull Riding: 6 pm
Jacobs Livestock NRA Rodeo: 7 pm
(Tough Enough to Wear Pink)
Wild Cow Milking: 9 pm
Sho Down Band:
9 pm following rodeo (beer gardens)
Yankee Joe's Gemstone & Fossil Mining (Pavilion)

SATURDAY, AUGUST 15

Jacobs Livestock Team Roping: 9 am
Horseshoe Tournament: 9 am
The Kids Fun Zone
(by the river throughout the day)
Double Vision Magic Shows
(throughout the day) times (TBD)
4H BBQ (Jeffers Building): 12 pm
4H Livestock sale: 2 pm
Miniature Bull Riding: 6 pm
Jacobs Livestock NRA Rodeo: 7 pm
(Thank you Veterans)
All Girls' Stock Saddle Bronc Riding: 7 pm
Wild Cow Milking: 9 pm
Sho Down Band:
9 pm following rodeo (beer gardens)
Yankee Joe's Gemstone & Fossil Mining (Pavilion)

SUNDAY, AUGUST 16

Fair Parade (Main Street): 10:30 am
Cowboy Church-Larry Mehlhoff :12 pm
in the Jeffers Building
Closing ceremony Veterans: 2 pm



AUGUST 12-16,
2015

4H SHOWS, VENDORS, MUSIC,
DOUBLE VISION MAGIC SHOWS, OPEN
CLASS, KIDS FUN ZONE, POLICE DOG
DEMONSTRATIONS, PACK HORSE
DEMONSTRATIONS, KIDS MINING,
MINIATURE BULL RIDING, ... VENDORS...



AROUND THE COUNTY

Montana Pioneer Society convention in Ennis

Submitted by Mary Lou Garrett
MONTANA PIONEER SOCIETY

The Society of the Sons and Daughters of Montana Pioneers are excited to hold their 121st annual convention in Ennis, Aug. 7 and 8, 2015, at the El Western Conference Center. This is the first time the group has ever met in Ennis. In addition to the meeting, a BBQ will be held Friday night, and there will be tours of area historical sites as well as local activities.

The Sons and Daughters of Montana Pioneers was organized at a meeting by the Society of Pioneers at the territorial capitol courthouse in Helena on Sept. 10, 1884. Our purpose is to perpetuate the sacrifices and heroic virtues of our pioneer ancestors who blazed a trail into Montana Territory.

Stories of trails our pioneer ancestors took to Montana will be the major presentation during the convention by Historian Linda Wostrel. Members will be noticeable during the convention attired in vintage clothing from the late 1800s. William Ennis and his wife were original members of the Society of Montana Pioneers and their daughter, Jennie Ennis Chownig, held offices in both the Society of Pioneers and the Sons and Daughters of Montana Pioneers.

For more information, visit our website at www.sonsanddaughtermtpioneers.com.

Stockmanship clinic in Alder

Submitted by Rebecca Ramsey

White Hibbard, the editor of the Stockmanship Jour-

nal is holding a low-stress stockmanship clinic in Alder on Aug. 12. Please call Aaron and Alisha Paulson at 842-5379 and RSVP before Aug. 5 so we can have an accurate meal count for the caterer.

Beer fest at the Bale

Submitted by Pamela Kimmy
VIRGINIA CITY AREA CHAMBER OF COMMERCE

The third annual Bale Beer Fest is scheduled for Aug. 1, 2015. The Bale of Hay Saloon in historic Virginia City hosts this Montana microbrew festival, featuring two Montana brewers and one Montana distillery.

Saturday, we feature the Butte Brewing Company from Butte, Katabatic Brewing from Livingston and Bozeman Spirits from Bozeman. Beer, booze and music flow under the big tent next to the Bale of Hay Saloon. Festivities start at high noon and end at 7 p.m. Chad Ball from Butte will be playing acoustic folk and blues all day.

Arts festival in Ennis

Submitted by Elizabeth Bergstrom
ENNIS ARTS ASSOCIATION

Come enjoy art in the beautiful Madison Valley. Mark your calendar for the 20th annual Madison Valley Arts Festival on Saturday, Aug. 8, from 10 a.m. to 4 p.m. The festival will be held at the tree-shaded Peter T.'s Park in historic downtown Ennis.

Artists from Montana and western states will be offering their quality work at this juried event. Items offered will include paintings, pottery, furniture, stained glass, jewelry, photography, forged iron and fiber art among others.

In addition to the 45 arts and crafts booths, there will be barbeque and homemade

baked goods, a meet the author book signing, children's face painting, 50/50 cash raffle and live entertainment by the talented Ennis Community Band, the local Tune Tanglers group and our own traveling accordion player, Jan Beekman. This annual festival, sponsored by the Ennis Arts Association, will also include a raffle of several donated art pieces. For more information please go to www.ennisartsassociation.org or call Leesa Bingham at 682-7272.

Bat Week at Lewis & Clark Caverns

Submitted by Tom Forwood
LEWIS & CLARK CAVERNS STATE PARK

Next week is the sixth annual bat week at Lewis & Clark Caverns State Park. Bats are the animal most associated with the park and we set aside a few days each August to celebrate these amazing mammals. During bat week we offer a variety of programs from walks to slideshows that introduce park visitors to the lives and many amazing adaptations of bats as well as to their unique lifestyles. Lewis & Clark Caverns State Park is home to at least 10 of Montana's 15 bat species. Each day there will be various short programs with special programs each night.

The events start Tuesday, Aug. 4 and run through Saturday, Aug. 8. Email ranger Tom Forwood at fwptforwood@gmail.com for a full schedule of the bat week events and programs.

Missionary news from Twin Bridges

Submitted by Nathan Wayland

Jeanne Breakall, daughter of George and JoyAnn Breakall from Twin Bridges,

is returning home from the New Zealand Wellington LDS Mission on Aug. 15.

Luke Jones from Twin Bridges leaves Sept. 9 for a two-year Mission to Baltimore Maryland for The Church of Jesus Christ of Latter Day Saints.

WE'RE ON THE WEB!
WWW.MADISONIANNEWS.COM
CHECK US OUT!

Get to know your WILDLIFE NEIGHBORS

free 2015 community speaker series

GOLDEN EAGLES

presented by *Earl Johnston*
Madison Club University

Join us for a fun series connecting Southwestern Montana communities to the rich and diverse wildlife on the landscape.

WCS COMMUNITY PARTNERSHIPS

For more information, contact: Dawn Doherty 842-2106

AUGUST 12, LAURIN
Early admission: 6:00am
COMMUNITY POTLUCK BBQ at 5:30pm
PRESENTATION at 7:00pm

Web: www.enniscommunitypartnerships.org | Find us on Facebook & Instagram

ELECTRONIC SUPPLY

(406) 682-7858
(406) 596-1513
mtnvw@3rivers.net

Jim Forsberg
Mountain View TV & Satellite, Inc.
6 Sunrise Loop Ste B
Ennis, MT 59729

DUST BUSTERS

GARY COOPER Phone: (208) 709-4112

MADISON MAINTENANCE

WE CAN HELP WITH ALMOST ANY TASK, JUST ASK!!

- Cleaning
- Yard Maintenance
- Garbage Hauling
- Caretaking of Homes & Animals
- Various Errands

LOCALLY OWNED & OPERATED PLEASE CALL 406-890-5046

90TH BIRTHDAY PARTY

FOR PEARL EDWARDS

SATURDAY, AUGUST 1ST, 2-5 PM
CHURCH OF THE VALLEY - TWIN BRIDGES

COFFEE, CAKE AND MEMORIES

4 RIVERS CONCRETE PRODUCTS

SHERIDAN, MT
WHITEHALL, MT

Quality Concrete - Premium Service

- ★ ★ ★ ★ ★
- Front Discharge Trucks
- Ready Mix Concrete
- Washed Sand & Gravel

842-5735 • 287-3728

VACATION BIBLE SCHOOL

Madison Valley Baptist Church

JOURNEY OFF THE MAP™

Unknown to Us, Known to Him

While exploring uncharted territory kids will discover that Jesus is the Ultimate Guide. They will learn that, even when faced with the unexpected, they can know how to listen for God's direction.

The expedition begins:

Registration: August 2, 2015/ 4:30 to 5:00 p.m.
VBS: August 2 - 6, 2015/ 5:00 - 8:30 p.m.

Madison Valley Baptist Church
5050 US Hwy 287, Ennis, MT 59729

For more information, call:
Kristi Lyons 640.0831/Jennifer Bunniss 680.2724

shawk1119@yahoo.com or bunnissfamily@hotmail.com

STAND UP PADDLEBOARD PILATES FITNESS CLASS

LOCATION: Ennis Lake (Kobayshi Beach)
TIME: Mondays, 7 pm • Wednesdays, 7 am
\$15 (per class) • \$75 (6 class card)

Includes land warm up, paddling and pilates on the board

Must have basic SUP experience
Classes are weather permitting
(cancellations sent via text)*

***Private or small group lessons available for beginners!**

B.Y.O.B
(bring your own board)

Paddleboards available for \$10/hr at Trout Stalkers 682-5150

Call or text to reserve your spot!

Christine Despres RN, BSN • Holistic Health Coach
406-600-6379 • Christine@TheWellnessNavigator.com

PADDLEFIT
CERTIFIED LEVEL 2

FOR SALE

RIVERSIDE MOTEL & RV PARK

2.43 ACRES
BROKERS PROTECTED
406-682-4240

AARP® Auto Insurance Program from The Hartford

SEE HOW MUCH YOU COULD SAVE!

Jack W. Daugherty Insurance and Financial Services, LLC
201 E. Main St., Ennis, MT 59729
682-4002
847-7000 Sheridan
www.jackdaughertyinsurance.com

All Sweeps CSIA certified.

Pro-Vac Chimney Sweeps

CLEANING SPECIAL!
\$10 OFF Any System
Additional \$20 OFF for two systems
Ask about our duct cleaning special pricing.
Offer good through 8/31/15. Sweepers must be present at time of offer. Offer good through 8/31/15. Sweepers must be present at time of offer.

Call us Now!
www.provac-chimney-sweeps.com
406-599-4919

Chris Striegel - Cameron, MT
Cell 805-458-9178

Building & Maintaining Madison County

CM Construction

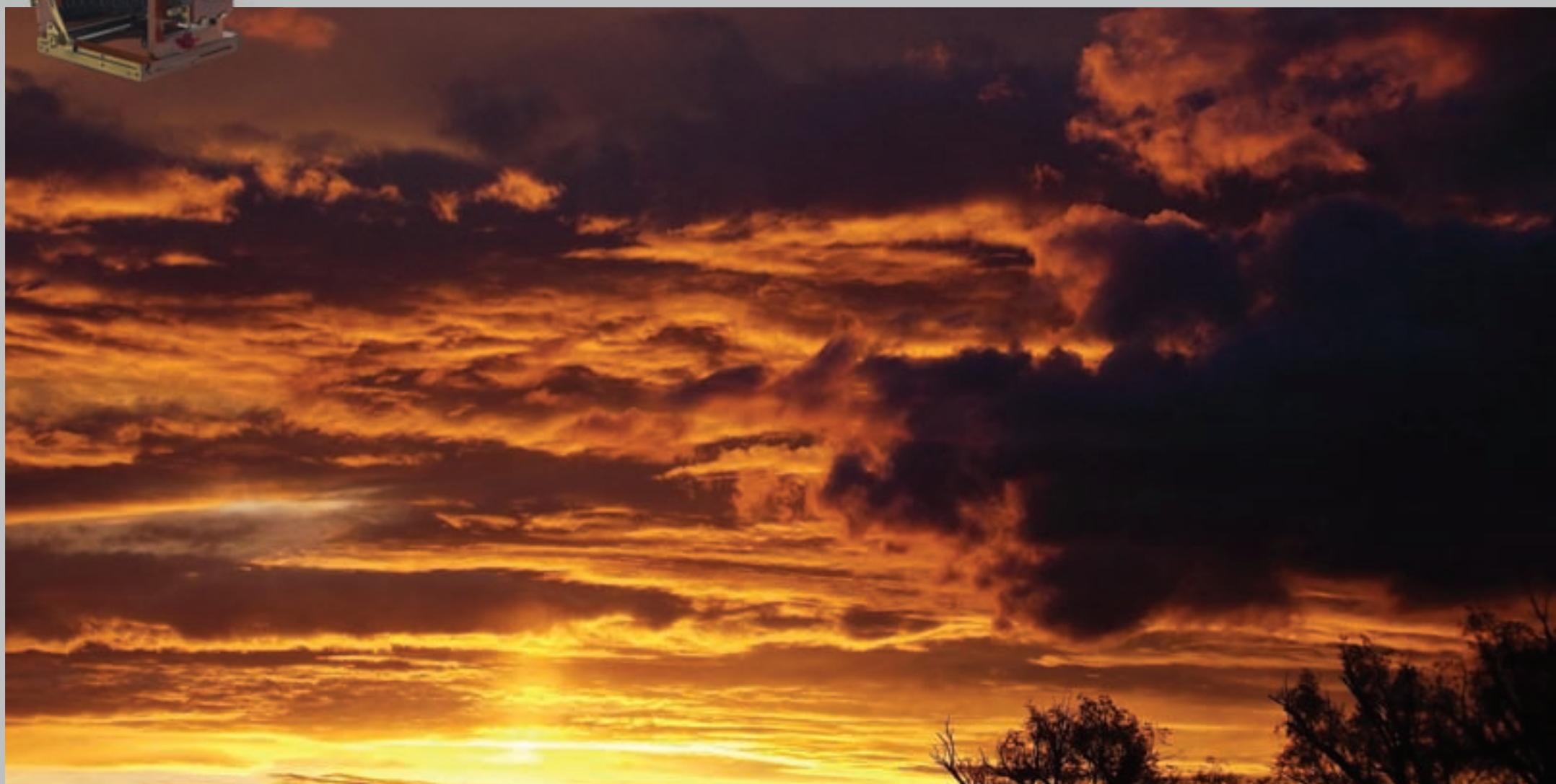
Licensed & Insured

Chris Striegel - Cameron, MT
Cell 805-458-9178

Construction-New & Remodel
Home & Yard Maintenance



PHOTO OF THE WEEK



Sky and rainbows
Submitted by Sheri Luksha



WELCOME BABY GOSSE

Photo courtesy Rick Bachmann

Ryan Gosse, former Montana Fish, Wildlife and Parks game warden in the Madison Valley, and his wife, Kendra, welcomed baby Ila Clare into the world on May 14, 2015. Ila Clare weighed 6 lbs.

4 PAW RESCUE PET OF THE WEEK



TRAVIS

"Looking for a permanent job. Great mouser, single guy, good inside and outside. Healthy (got everything taken care of). Bashful until I get to know you, but after I do I can be super friendly." (It took me quite awhile, but I finally got to where I like to get on my lady's shoulders and love up on her.) Oops, got off track a bit. Well, I guess maybe not, that should do it. I'll send this to the Madisonian Mews and maybe I'll get a home there. Oh, wait, I guess I'd better include my phone number so they can call, silly me! It's 439-1405 (Misty). Thank you and hope to see you soon. Travis

SPONSORED BY:

McLeod Mercantile

2 convenience store locations
Norris & Sheridan



Bulk fuel delivery in Madison & Jefferson counties

(406)685-3379

****24 Hour fueling** **snacks**
fishing licenses, bait & tackle**

MADISON COUNTY WEATHER

Thursday



Sunny. Highs 75 to 85.

Friday



Mostly clear. Lows 45 to 55.
Highs 75 to 85.

Saturday



Sunny with a 20 percent chance of showers and thunderstorms.
Highs 75 to 85.

Sunday



Partly cloudy with a 20 percent chance of showers and thunderstorms. Lows 50 to 55.
Highs 75 to 85.

Monday



Partly cloudy with a 20 percent chance of showers and thunderstorms. Lows 50 to 55.
Highs 75 to 85.

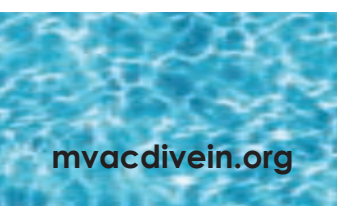
Quote of the Week:
Family means no one gets left behind or forgotten."

David Ogden Stiers

MADISON VALLEY AQUATIC CENTER

a **BOLD**
goal...

Together...
let's be **BOLD**



Get Results.
s.hill@
madisoniannews.com

**RALPH
HAMLER**
LICENSED SANITARIAN
Septic Application & Design
Subdivision Applications
406-842-5788
Cell: 406-596-0437
Sheridan, MT
ralphhamler@gmail.com



R&M Rentals Inc.
Ron or Martha Noack
4995 US Hwy 287 N. ~ Ennis, MT 59729

Daily & Weekly Rentals
Insurance Rentals
Economy & Midsize cars, SUV's
Free Local Pickup
Major Credit Cards Accepted
Email: xpressrenta_car@yahoo.com
Reservations Appreciated

Monday-Friday, 9-5pm • Saturday 9-1x pm
(closed for lunch 1-2 pm)

406.682.7039
After Hours Call 406.570.8133



VISIT OUR WEBSITE FOR CURRENT
DINNER DATES & TICKET PURCHASING

- "Salt of the Earth" Art Show (May 7th)
- Willow Spring Ranch (August 12)
- Wells Fargo Ft. Montana Rose (June 20)
- Willie's Distillery (August 23rd)
- Sabo Ranch (July 2nd)
- Gallatin Growns (August 26)
- Cooper Hereford Ranch (July 26)
- Bozeman Brewing Co (Sept 20th)
- Gallatin Valley Botanical (August 4)
- AND MORE...

WWW.SEASONALMONTANA.COM f t i
melissa@seasonalmontana.com • 303.319.4354

Banking on the future: *Celebrating 50 years*

Caitlin Avey
THE MADISONIAN
news@madisoniannews.com

"My parents came in from Upland, Calif., in 1959," said Tim Combs. "They were ready to get out of California."

And get out they did. Peter and Jinny Combs purchased the Diamond J Guest Ranch outside of Jeffers and quickly integrated themselves into the community – purchasing not only the Diamond J, but also opening a grocery store and eventually a bank.

"My dad was an entrepreneur. He opened the grocery store to help support the ranch but no one bought groceries," said Tim. "So he asked where people bought their groceries and was told they bought where they banked, and that's how it happened."

This July marks the 50th anniversary of the First Madison Valley Bank in Madison County. In 1965, Peter and Jinny Combs opened the bank, solidifying their presence in the Ennis community.

Tim took over as CEO of First Madison Valley Bank in Ennis and its branches in Boulder, Montana City and West Yellowstone, from his dad in 1994. The business has managed to stay within family and is now being carried on by second and third generation Combs.

"To have a family owned business that has lasted for 50 years is quite the accomplishment," Tim said.

The beginning

The bank opened on Main Street in a small building with no indoor plumbing, just an outhouse outback, and was renovated and modernized within a year. It took on a western theme that eventually led to the renovation of other various storefronts on Main Street.

"My dad was civil minded," said Tim. "He promoted Main Street with free interest loans for anybody that fixed the front of the store with board walk veneers, and a lot of merchants took him up on it."

The building the bank currently inhabits was built in 2007 and was intended to reflect the wilderness.

"A lot of people think of Montana as a wilderness area and the building now reflects a lodge which reflects the wilderness of our state," Tim said. "The park area fits in with the wilderness theme – keeps it green and provides a place where the community can enjoy it as well."

A second branch opened in Boulder in 1967, after opportunity arose to apply for a separate charter. By the end of the 90s, two more branches had opened – one in Montana City as well as

West Yellowstone – and four "mini banks" with ATMs opened on the Main Streets of Ennis, Virginia City, Sheridan and Harrison.

Mary Oliver, vice president of marketing and public relations for First Madison Valley Bank, began working for Peter Combs when she was a sophomore in high school.

"Peter came to the school and said he wanted to give a younger person an opportunity to grow with the bank," Oliver said.

After high school, Oliver went on to get her business degree, came back to the valley and has been with the bank ever since.

"It's been a golden career in a small town, working with the community and with all three branches has whet my appetite for more opportunities," said Oliver.

Success strategy

"Our guiding strategy is to be active, generous and integral members of our local communities," said Tim, whose family has been active in multiple boards and organizations throughout the years.

Not only is it important for businesses to be involved, according to Tim, you cannot have a successful business without having a vibrant community willing to participate in local banks and buying local.

"The viability of a community is important," he said.

A way of saying thanks

In order to say thanks and celebrate 50 years, the First Madison Valley Bank provided lunch and live music and spoke about the importance of its customers at an event on July 22.

"We thank you for banking with the community bank that honors tradition, rises to meet your needs and builds trusted relationships while growing and supporting communities," said Oliver in a speech addressed to a crowd of nearly 500.

Steve Turkiewicz, president and CEO of the Montana Bankers Association also addressed the crowd and congratulated the Combs and First Madison family.

"The Montana Bankers Association congratulates the Combs family and the generations of bank employees who have worked day-by-day, one customer at a time, to reach this important milestone," he said.

As for the future, Tim says his hope is to set a good example through ownership and stewardship.

"I hope that what we've done and what we've built on is continued on by people other than ourselves," Tim said.



"The viability of a community is important."
– Tim Combs, CEO of First Madison Valley Bank



All photos by Abigail Denny/The Madisonian

Top: The bank hosted a luncheon on July 22 to thank the community for its continued service and dedication to supporting local entities.

Middle: Staff members of the First Madison Valley Bank served nearly 500 community members at the event.

Bottom right: Bottom of the Barrel, a country rock band based out of Big Sky, provided music for the event.

HEALTH & WELLNESS

Tips for Kids Eat Right Month

Submitted by StatePoint

You want the best for your kids. As role models, parents and caregivers play a vital role in children's health – teaching kids about healthful foods and making sure they get enough daily physical activity.

More than one-third of children and adolescents are overweight or obese, according to recent Centers for Disease Control and Prevention statistics. But childhood obesity, which is associated with elevated risks of high cholesterol, high blood pressure, bone and joint problems and sleep apnea, amongst other adverse health effects, can usually be prevented. "August, which is Kids Eat Right Month, is the perfect opportunity for families to focus on the importance of

healthful eating and active lifestyles," said Marina Chaparro, registered dietitian nutritionist and spokesperson for the Academy of Nutrition and Dietetics.

To help, Chaparro is offering parents and caregivers tips they can use to promote healthy habits.

- Shop smart. Get your children involved in selecting the food that will appear at the breakfast, lunch or dinner table. Be adventurous by picking a new food every week.

- Cook healthfully. Involve your children in the preparation of all meals with age-appropriate tasks. Getting your kids involved helps teach them about food, and may entice them to try new foods they helped prepare.

- Eat right. Breakfast is a critical meal. Make sure no one in the family skips

it – including you. In the evening, sit down together as a family to enjoy dinner and the opportunity to share the day's experiences with one another. Research indicates that families who eat together have a stronger bond, and children have higher self-confidence and perform better in school.

- Plan wisely. When planning meals, start by filling half the plate with fruits and vegetables, choosing low-sodium options. Make sure at least half the grains your family eats are whole grains. For beverages, choose water over sugary drinks, and opt for fat-free or low-fat milk. Also, be mindful of appropriate portion sizes.

- Get moving. After meals, get moving together. Aside from being a great way to spend time together, regular physical activity strengthens

muscle and bones, helps to achieve a healthy body weight and supports learning. It can also help develop social skills and build self-esteem. Kids are encouraged to be active for 60 minutes per day.

- Consult an expert. A registered dietitian nutritionist (RDN) can deliver the highest level of nutrition counseling. Consider consulting an RDN to ensure your family is getting needed nutrients with a meal plan tailored to your family's lifestyle and busy schedule. To search for an RDN in your area, to find more healthful eating tips, recipes and videos, and to learn more about Kids Eat Right Month, visit KidsEatRight.org.

As a parent, you are highly influential, and habits formed early on could potentially last a lifetime. Take steps to steer kids to a path of good health.



20|Twenty Eyecare Services Include:
 Vision & Eye Health Exams
 Children's Vision
 Latest Technology for Treatment of Eye Disease
 Contact Lenses
 Vision Therapy

Come see our collection of over 20 designer frame brands.

20 | TWENTY
 OPTIC

522-8888
 280 W Kagy Blvd, Suite B, Bozeman, MT.
 www.20TwentyMT.com
 Most insurances accepted including VSP & EyeMed

Ruby Valley Hospital Physical Therapy Team
 Customized treatment plans to restore functional mobility specific to your lifestyle

Neck Pain/Headaches Muscle & Joint Pain
 Back Pain Sports Injury
 Falls/Decreased Balance
 Post-Surgical Rehabilitation
 Self-Care/Home Safety

Jamy Kraal, MPT Jessi Muniz, DPT
 Jana Butler, PT Cindy Crismore, Office Manager

Appointments available
 Monday - Friday, 8am - 5pm
 Call (406) 842-5081 for more information
 www.RubyValleyHospital.com
 The Ruby Valley Hospital is an equal opportunity provider

Small changes can make a big difference at the supermarket

Submitted by StatePoint

From price to quantity to flavor, consumers have always considered how products affect their families when deciding what goes in the shopping cart. And shoppers these days are making purchasing decisions that take global factors into consideration too, thanks to available information about companies' environmental and human rights track records.

Indeed, a new "2015 Carting Away the Oceans" report by Greenpeace evaluates and ranks supermarkets on their efforts to protect oceans and seafood industry workers. It found that while some major grocery chains have made strides to source certain seafood products from environmentally-sustainable suppliers that treat workers fairly, much more needs to be done to address systemic problems in the industry.

"Investigations continue to reveal that human rights abuses are widespread problems in the global seafood industry. Top retailers are in a position to be doing much more to protect both the oceans and the workers that provide seafood," said Greenpeace senior oceans campaigner David Pinsky.

As a consumer, Pinsky notes that you also have a lot of power to affect change when it comes to seafood sustainability and human rights concerns. Be

sure to read labels and ask questions. Whether you shop at a mom and pop operation or a national chain, you can talk to your grocer about the products they carry and let them know what you would prefer to see on the shelf. If your grocery store does not change their offerings, you can shop somewhere else.

"Your tuna sandwich may not currently represent anything to you beyond lunch, but if you don't investigate where it actually came from, there is a large chance it was brought to your plate in ways that treated workers poorly and compromised the health of our oceans," said Pinsky. "In addition to having ocean safe canned tuna on store shelves, supermarkets must put canned tuna policies in place to help guide sustainable, socially responsible practices."

In this year's report, 80 percent of retailers received passing scores overall, however, all of the 25 retailers profiled have failed on their efforts to address human rights abuses and illegal operations in the seafood industry. To view the entire ranking and read the report, visit seafood.greenpeaceusa.org.

These days, eating "guilt-free" means something different to some people rather than just avoiding sweets and treats. By learning more about how your seafood was caught, farmed, packaged and manufactured, you can feed your family foods you feel good about.

To advertise Your Business on the Health & Wellness Page

Call **Susanne** @ **682-7755**

or email s.hill@madisoniannews.com

MAC'S CHC PHARMACY

(406) 842-7434

317 Madison St
 Sheridan, MT

Monday - Friday
 9 am to 5:30 pm

Medicare Supplement Plans

We offer FREE assistance & information.
 For your personal consultation please call

ENNIS **JACK W DAUGHERTY** **SHERIDAN**
 406-682-4002 **INSURANCE** 406-842-7400
 & Financial Services, LLC.

Independent, Authorized Agent for
BlueCross BlueShield of Montana

"An Independent Licensee of the Blue Cross and Blue Shield Association"

10 AM TO 3 PM

Dunking Booth!

TRUE VALUE HARDWARE IS SPONSORING A DUNKING BOOTH AT THEIR TENT SALE AUGUST 8, 2015 FOR BENEFIT OF MADISON VALLEY MEDICAL CENTER.

YOUTH AND ADULTS COME THROW BASEBALLS AT A TARGET TO DUNK YOUR FAVORITE "FRIEND OR FOE"
CHILDREN UNDER 18 \$1 PER BALL OR 6 BALLS \$5 • ADULTS \$2 PER BALL OR 6 FOR \$10

Schedule:

10:00-10:30: Bryan Sennette - Fish Bowl Manager	12:30-1:00: Dr. R.D. Marks - Chief of Staff, MVMC
10:30-11:00: Sheriff Roger Thompson - Madison County Sheriff	1:00-1:30: Dr. Andy Thomas - Physical Therapist, MVMC
11:00-11:30: Melinda Merrill - Berkshire Hathaway	1:30-2:00: Jared Smithson - Ennis Basketball Coach
11:30-12:00: Becky Vujovich - Ennis Mayor	2:00-2:30: John Bishop - CEO, MVMC
12:00-12:30: Blake Leavitt - Madison Foods Manager	2:30-3:00: Brian Hilton - Principal Ennis Elementary School



COLUMNS



HOLLOWTOP SMOKE SIGNALS

By Art Kehler
FOR THE MADISONIAN

Entering the developed world Reflections on Harrison's recent technological invasion

Indisputably, it's the biggest event in Harrison since the celebrated laying of the sewer lines in the early 2000s. Three weeks ago, a small army of strange, helmeted men and their excavation machines showed up in town. Overnight, the community's population doubled. Local veterans opined that there hadn't been so much tracked machinery in such a small area since the Battle of the Bulge.

Then, in a disturbing turn of events, orange lines appeared on our streets. Popular consensus held that the cafe's daily liberal versus conservative political debate had finally gotten out of hand. Therefore, the lines had been painted by the police to mark the site of a mortal crime scene. As if that wasn't bad enough, the outsiders next began digging holes all over town. Consequently, it looked as though our quiet village had suffered an invasion of body snatchers.

Fortunately, those dramatic scenarios were put to rest when locals noticed the invaders' pickup trucks bore the logo of a regional telephone service provider. Soon after, to everyone's relief, word got out that the strangers were here to lay fiber optic cables for their company's Harrison customers.

In no time at all, streets and alleys were being excavated in mass. To everyone's amazement, at various pinch points, Harrison actually experienced traffic congestion. In one instance, four cars were stopped for almost a minute. A riot nearly broke out! To avoid further hostilities, some citizens used all-terrain vehicles to straddle the railroad tracks behind the town and bypass the pinch points altogether.

What's more, things got even more exciting when the cable crews began to lay lines through people's lawns. Because the workers were entering private property, misgivings were heightened.

As a result, local gardeners could be seen grimly guarding their treasured plots with brandished shovels. For a while, the tension was tangible. Nonetheless, in the end, all the primary cables were installed without horticultural mishap. The final hookups are to take place sometime later.

Certainly, I am no electronic communications expert. However, from what I have gathered, a Harrison customer's home phone, Internet and T.V. service will all be contained in one fiber optic cable. Additionally, because said cable will be buried underground, T.V. clients may no longer have to sweep snow from a satellite dish. Most impressively, the fiber optic cable will provide a lot more bandwidth than does the current copper wire hookups. Hence, data transfer speeds will increase greatly. All of which means, when the town's customers are on the Internet, their computers will run much faster.

Conversely, I wonder if human eyes, like those of a dog with its head hung out the window of a speeding car, will be harmed by extended viewing of the blizzard of flashing images? Similarly, what about the potentially disastrous adverse effects of mega-speed Internet surfing during an earthquake? Only time will tell if my concerns are legitimate.

Ultimately, when the fiber optics installation is completed, Harrison will have officially entered the developed world, and I'm not sure we're ready. Furthermore, I'm not sure the developed world is ready for that momentous transition either. Nevertheless, like folks in many other small Montana towns, our citizens are remarkably adaptable. Given time, there's no doubt we will adjust to this newest technological invasion. Then maybe everyone can put their shovels away.

©Art Kehler
Art lives in Harrison.
His essays, stories and poetry have been published in newspapers, journals, literary magazines and online magazines.



A good sign

Whether you call it restoration or rehabilitation, more and more streams in Southwest Montana are getting overhauls to bring back some of the function they have lost over the years. One example is the newly completed Miller Ruby Restoration Project that the Ruby Valley Conservation District sponsored this past year. The project, which was completed this spring, took a straightened section of the Ruby River and returned it to its original, more sinuous channel. This lengthened the river, reduced erosion from stream banks, added vegetation to the river corridor and created acres of new habitat

to the surrounding area.

Often the question on the minds of many folks when these things wrap up is, "when will the fish be back?" It's true, the prospect of good fishing excites many a person, but projects like this don't just benefit the fish. In many ways, these projects create a "Field of Dreams" scenario – build it and they will come – and come they have. In mid-May, the conservation district brought birders from the Sacagawea chapter of the Audubon Society to survey bird species near the newly completed project on the Ruby River. What I originally thought would be a fairly routine trip turned out to

be a much more exciting experience for everyone.

"We were in awe," said Loreene Reid, president of the Audubon chapter based out of Bozeman.

Before the project, a survey observed only 10 bird species on the then straightened stretch of the Ruby. On the other hand, an unstraightened section just to the south had three times that number. Now in 2015, not months after project completion, 36 observed bird species were utilizing the new habitat around the river. Several of which were species of concern with interesting names such as the red headed Cassin's finch, the appropriately named Yellow-rumped warbler and a species of woodpecker known as the Red-naped sapsucker. What bird experts noted was that the species had moved in almost immediately, and several were even nesting that spring. The new residents included great horned owls, sand-pipers and even a family of killdeer that had made a newly constructed gravel bar home.

The presence of birds is telling of the quality of the habitat such as ponds and wetlands that was created

when the stream was put back into its original channel. This means more habitats for insects, reptiles, amphibians, mammals and all sorts of creatures. This includes the kind of creature who might use a fishing rod or a pair of binoculars. Wherever your interest lies, there's no denying the dramatic benefits that come about through these projects. As Reid pointed out after her visit, "Whenever you see birds nesting right on the reclaimed area, that's a good sign."

The Ruby Valley Conservation District invites you to learn more about stream restoration and attend a tour of the completed Miller Ruby Restoration Project on Aug. 6 at 4 p.m. at Miller Cattle Company just outside of Alder. You may contact rubywatershed@gmail.com for more information or directions to the ranch.

The Ruby Valley Conservation District would like to thank the project partners who came together over the course of six years to plan, design, build, monitor and generally make this project possible. Everyone's contributions have created a positive legacy that will last a lifetime.



I want to thank the kind soul that left the handmade gift and note for me at The Madisonian office. I wish I knew who you were; I'd like to thank you personally.

Much sympathy goes out to the family and friends of Karen Redfield Gibson with her passing. Karen was a young wife and mother who passed away from cancer this past week. Karen, her husband and in-laws owned Sportswear Design in Dillon. So nice to see Karen's class host a river parade float in her honor at the Floating Flotilla and all-class reunion in Twin Bridges this past weekend.

I swear one of these fine days I am just going to have to drive

outside of town in the boonies and scream really loud! I get so tired of prices of things going up, up, up and common sense just being a thing of the past. It is just so hard to keep up with it all. My home insurance – haven't had a claim – goes up every year. I call the company and ask why and they start listing all the claims elsewhere in the United States. I say that shouldn't matter to rates in Montana, and they say it does matter. What are you going to do except pay it?

I sent paperwork to the state on a form they sent to me, with the fee, and got a letter back that it was on the wrong form and that I owed the fee again to reprocess. They sent me the wrong form, but I had to pay a double fee. What the heck?

I got a letter from an insurance company saying they won't pay for a certain insulin anymore and that they contracted with another company. Doesn't matter if their insulin didn't work as well, that was all they would pay for. They said to try it for three months and

see the reactions, and then they would make a decision. A type one diabetic taking insulin that doesn't work as well as another brand for three months – the insurance company thinks this is okay. How does an insurance company tell you how to medicate before a doctor? Ah, my list goes on and on and I don't want to think about it all too much because I'd just have a stroke.

I saw a bumper sticker that said, "I survived free-range parenting." I need to get about a dozen of those. Gosh, I can remember when I was growing up, probably started about seven years old, I'd catch my horse early, do chores while the horses ate grain and I'd be off riding. I'd stop at the neighbors' houses and visit, or maybe eat, and then just go on my way. Didn't worry about weird or perverted people; didn't worry about much of anything to tell you the truth. I'd get home some days after sunset. If my parents needed me home, they'd leave a few messages around the valley with neighbors. I know free-range

parenting can't be what it used to be with the increase of ... what in the world do you call them? People with no respect for others and no concern for human life? Kids still need responsibility and the need to learn common sense, freedom and problem solving. I favor free-range parenting, as much as it can be free-range any more!

So what have we learned this week? Children hear everything you say and mimic everything you do; give them a good example. Those who judge will never understand, and those who understand will never judge. Some great advice from a tree – stand tall and proud, sink your roots into the earth, be content with your natural beauty, go out on a limb, drink plenty of water, remember your roots and enjoy the view!

August, here we come! Soon kids in two-a-day sports for school will be moaning and groaning; back and forth to practices, and school days after. The Madison County Fair is right around the corner also! Family fun! Count the rainbows, not the thunderstorms!

MONTANA NIGHT SKIES

By Richard Stouffer

The highlight of the Montana night sky in August is the Perseid Meteor shower, the best meteor shower of the year. On top of that, 2015 will be a great year for observing the Perseids.

During the nights of Aug. 12 and 13, when the Perseid shower hits its peak, the very thin crescent moon won't rise until less than an hour before sunrise when the sky will already be brightening toward dawn. With the best time for observing the Perseids being between midnight and the first light of dawn, viewing conditions will be ideal during the hours when the Perseids hit

their peak on the morning of Aug. 13. An observer may see upward of 50 Perseids per hour during the showers peak. For some lucky observers who are observing from a very dark site and who happen to be looking up when the shower is at its strongest, they may get to see 100 or more meteors per hour. To observe the meteor shower, go to the darkest site you can find, get out your easy chair or blanket, look straight up in the sky facing the northeast and enjoy! You will be looking at left over dust from Comet Swift-Tuttle, a comet that won't return to the neighborhood of earth until 2122.

As for the planets, Venus becomes lost in the solar glare as the month opens, followed by Jupiter which disappears from sight in the evening sky less than a week later. Venus then becomes a morning star beginning about the last week of August joining Mars, which becomes visible in the morning sky beginning about the second week of August. By the end of August, Mars rises about two hours before the sun. Look for Mars well below Castor and Pollux, the two brightest stars in the constellation Gemini. The remaining planet visible in the night sky is Saturn, which is located a little bit to the

right of the three stars forming the claws of the scorpion in the constellation Scorpius. As August begins, look for Saturn, about 30 degrees above the southern horizon as the sky becomes sufficiently dark. Saturn sets about a half hour after midnight as the month begins and about a half hour before midnight as the month comes to a close.

As for the moon, it passes well to the upper right of Mars on Aug. 12, and to the upper left of Saturn on Aug. 22. The moon is full on Aug. 29.

*Life-long amateur astronomer and former member of Delaware Astronomical Society and National Capital Astronomers

Commodity Insite: The real world vs. Disneyland

by Jerry Welch

The commodity markets are collapsing. The ugly combination of a strong dollar, lower crude oil prices, ample to burdensome raw supplies and "commodity currencies" falling to multi-year lows is simply weighing heavily on every hard asset on the board. There is nary a commodity dodging the weakness.

The media is now focusing on the train wreck underway with commodities. Here are just a few of the inflammatory headlines recently posted in various newspapers that aggravate and accelerate the selling pressure across the wide spectrum of commodities: "Other Bad Omens For The Commodities

Meltdown," "Gold Tanking and Commodity Prices Cliff Diving," "Oil Warning: The Crash May Be Much Worse Than You Think." And I could add other headlines equally as alarming but I am certain you get the message. Commodities are collapsing.

In November 2014, I posted a column about why I felt strongly that commodities were on the cusp of a world of hurt for 2015 and beyond. The title of the column was, "Abandon All Hope, ye who enter here." The title came from Dante's Inferno and is the inscription on the entrance to Gates to Hell. As things are rapidly unfolding, it is indeed a fact that being

long or bullish commodities is turning out to be hell.

One measure of hard assets is the Bloomberg Commodity Index. Here is how it is weighted; energy 35.71 percent, agriculture 29.51 percent, industrial metals 14.97 percent, precious metals 15.14 percent and livestock 4.66 percent. As you can see, the index is made up of 22 exchange-traded futures. Each commodity is weighted to account for economic significance and liquidity. And this week, the BCI fell to the levels of 2002, 13 long years ago.

In 2014, commodities fell for the fourth year in a row, something never before seen

in history. This year is worse than last year. For example, the Bloomberg Commodity Index is down nearly 8 percent year-to-date with the following individual markets performing as such. Cocoa, up 14 percent, cotton up 6.8 percent, corn up 5.2 percent, natural gas, down 0.3 percent, Brent crude oil down 0.5 percent, soybeans down 1.9 percent, West Texas crude oil down 4.6 percent, silver down 5.2 percent, lean hogs down 6.4 percent, gold down 7.2 percent, wheat down 11 percent and cattle down 11 percent, copper down 12 percent and coffee down 23 percent. However, cocoa and corn prices are sharply lower this week. The

ranks of commodities doing well are dwindling quickly.

On the other hand, stocks, shares, equities and the Dow Jones continue to hang in there, defying gravity and ignoring the collapse taking place with commodities. From a historical viewpoint, collapsing commodities is generally a negative for equities. But there are a host of analysts that will vehemently disagree with my personal view of the historical relationship between stocks and commodities.

For some time, I felt strongly that the most over-crowded and priciest markets anywhere are stocks. For years stocks and commodities

moved more or less in tandem. But over the past few years, commodities moved south and stocks north. But soon, something has to give. Either stocks are headed lower with commodities, or commodities will turn north with stocks. Or a combination of the two scenarios will unfold.

I view commodities, hard assets as the real world. I view stocks, shares and the Dow as being Disneyland at times, detached from the real world. I also view Wall Street as being woefully disconnected from Main Street. I also find it impossible to fathom that equities will remain here or higher in face of collapsing commodity values.

COMICS & PUZZLES

Calvin and Hobbes by Bill Waterson



Garfield by Jim Davis



King Crossword

ACROSS

- 1 Highway division
- 5 Lamb's mama
- 8 Take to the pool
- 12 Press
- 13 Atlas page
- 14 Windy day toy
- 15 Uncategorized (Abbr.)
- 16 Pete Fountain's instrument
- 18 Rifle attachment
- 20 Minuscule bits
- 21 Regret
- 22 Big Apple letters
- 23 Bedding material
- 26 Stocking style
- 30 Exist
- 31 Office machine
- 32 Hockey legend Bobby
- 33 Presidential advisors
- 36 English composition
- 38 Fresh
- 39 See 37-Down
- 40 Ottoman officer
- 43 Tiara's relative
- 47 Surfing mecca?

1	2	3	4		5	6	7		8	9	10	11
12					13				14			
15					16			17				
18					19			20				
			21				22					
23	24	25				26				27	28	29
30					31					32		
33			34	35				36	37			
			38					39				
40	41	42				43				44	45	46
47						48				49		
50						51				52		
53						54				55		

- 49 — and kin
- 50 Take the show on the road
- 51 Praise in verse
- 52 Birthright barterer
- 53 Heche or Hathaway
- 54 Solidify
- 55 Univ. paper

DOWN

- 1 Big branch
- 2 Operatic solo
- 3 Inquisitive
- 4 "Keep singing!"
- 5 Host
- 6 Poet Whitman
- 7 Eco-friendly

- 8 Bandleader Henderson
- 9 Drunkard
- 10 Particular
- 11 Citi Field team
- 17 Beams
- 19 Sister
- 22 Put the kibosh on
- 23 Varnish ingredient
- 24 401(k) alternative
- 25 Kan. neighbor
- 26 Obese
- 27 Ph. bk. data
- 28 Geological period
- 29 Attempt
- 31 Not many
- 34 Belong
- 35 naturally
- 36 Approach
- 37 With 39-Across, holiday entree
- 39 "Monopoly" buy
- 40 Pocket bread
- 41 Any time now
- 42 Dazzle
- 43 Relinquish
- 44 Unless, in law
- 45 Greek vowels
- 46 So
- 48 Yule quaff

Just a Pinch

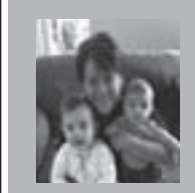
Sharing Hometown Recipes, Cooking Tips and Coupons
By Janet Tharpe

Light and Flavorful Pineapple Cranberry Zucchini Bread

"Slice up a loaf and watch it disappear!"



Wondering what to make with zucchini, that's not another fritter? Try baking a couple of loaves of Diane M.'s moist Pineapple Cranberry Zucchini Bread. Your family will fall in love with this recipe. I added the optional coconut and would highly recommend you do too! See step-by-step photos of Diane's recipe plus thousands more from home cooks nationwide at: www.justapinch.com/zucchinibread You'll also find a meal planner, coupons and chances to win! Enjoy and remember, use "just a pinch"...



Diane M. Twin Falls, ID (pop. 44,125)

- Janet

Pineapple Cranberry Zucchini Bread

What You Need

- 3 eggs
- 2 c shredded zucchini
- 1 c vegetable oil (can use 1/2 coconut oil melted & 1/2 veg. oil)
- 1 can crushed pineapple, 8 oz, drained
- 2 tsp vanilla extract
- 3 c flour
- 1 3/4 c sugar
- 2 tsp baking soda
- 1 1/2 tsp cinnamon
- 1 tsp salt
- 1/2 tsp baking powder
- 1 c chopped nuts (macadamia or pecan)
- 1/2 c dried cranberries
- 1/2 c coconut (opt)

Directions

- Preheat oven to 350 degrees.
- In a large bowl, combine eggs, zucchini, oil, pineapple and vanilla extract.
- In a separate bowl combine the dry ingredients.
- Add the dry ingredients to the wet ingredients.
- Fold in nuts, cranberries and coconut (if desired).
- Pour into 2 greased 8x4" loaf pans or 3 small loaf pans.
- Bake larger pans for approx. 50-55 mins and smaller pans for 35-40 mins or until golden brown and inserted toothpick comes out clean.
- Cool for 10 mins before removing bread from pans onto wire racks.

Submitted by: Diane M., Twin Falls, ID (pop. 44,125)
www.justapinch.com/zucchinibread

Brought to you by American Hometown Media

Get the Good News!

All puzzle answers on B7

NOVICH INSURANCE AGENCY

Twin Bridges • Phone 684-5701

For All Your Insurance Needs

Serving The Ruby Valley For Over 40 Years

"Stick With The Best!"

BOWMAN APPLIANCE SERVICE

1035 S. Main St. • Butte, Montana 59701
(406) 723-6797

We Work On All Major Brands.

In Ennis, Sheridan and Twin Bridges and surrounding areas
EVERY WEDNESDAY

SKYLINE SURVEYING INC.

MARGARET STECKER, PLS • (406) 581-0144
BOX 321, McALLISTER, MT 59740

* Property Corner Location * Boundary Surveys * Boundary Realignments
* Family Transfer Surveys * Subdivisions * Construction Layouts
* Elevation Certificates * Aerial Mapping * Topographic Surveys

WINDSHIELDS

NOVUS AUTO GLASS

JIM LINSKOTT
Offering you the highest quality auto-glass repair and replacement

1075 Nissen Lane
Dillon, MT
(406) 683-2846

We're on Facebook!
facebook.com/NovusAutoGlassLLC

BENEDICT BUILDERS LLC

BUILDING CUSTOM HOMES & COMMERCIAL BUILDINGS SINCE 1974
MEETING ALL EXCAVATION NEEDS TOO!

406.843.5330
PO Box 294 VIRGINIA CITY, MT 59755

JOE VELAND

406.682.3999

SERVICE WORK
NEW CONSTRUCTION
REMODELS

PO BOX 987
ENNIS, MT 59729

the Madison County MARKETPLACE

View classifieds online at www.madisoniannews.com/classifieds.

HELP WANTED

Alley Bistro is looking for part time kitchen and front of house position. Call John at 209-4031 or stop by for application. 38-tfc-b



Become a Foster Parent for Youth Dynamics

Please join Youth Dynamics in making a difference for Montana kids! Youth Dynamics is a private, non-profit organization that provides therapeutic foster care and respite care to children in need of a safe and loving home. Our belief is that every child deserves a family. If you are interested in becoming a Therapeutic Foster Parent, YDI will provide you with complete training and support. www.youthdynamics.org or call Christina at (406) 946-4294. 35-tfc-b

Help Wanted. Full time general maintenance at Antler Designs. Monday-Friday, 8-5 p.m.. Benefits. Apply at 333 W. Main St, Ennis or call 682-7153. 27-tfc-b

McAllister Inn is hiring servers, dishwashers, prep cook and bus person. Please call 682-5000 or apply in person from 2- 4 at McAllister Inn. 40-tfc-b

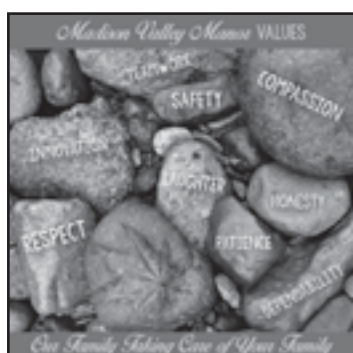
Sheridan School District No. 5 is accepting applications for the following positions for the 2015-16 school year: Head Varsity Cross Country Coach, Assistant Varsity Volleyball Coach, Assistant Middle School Volleyball Coach, Assistant Middle School Football Coach, Full-time Paraprofessional, Part-time Paraprofessional, Bus Driver, Substitute Teachers, and Accompanist. Information and employment applications can be obtained on the Sheridan Schools Website www.sheridan.k12.mt.us. If you are interested in applying for this position, you may also contact Rebecca E. Larsen, District Clerk, Sheridan Schools, PO Box 586, Sheridan, MT 59749, or call (406) 842-5302. 40-3-b

Upcountry Earthworks is looking for operators, truck drivers and someone with mechanic and welding experience. Call 682-7103. 40-tfc-b

Now taking applications for lunch and dinner shifts for a new Mexican restaurant next to Trenz. Servers, prep cooks, dishwashers and cooks. Call 682-3000 or email helen@aandomanagement.com. 32-tfc-b



Madison Valley Manor is looking for a per diem LPN or RN. Pay commensurate with experience. This is a great opportunity to work in a personal healthcare setting. If you are interested in a rewarding career in healthcare, Madison Valley Manor is the place. Please contact Christine Canterbury, DON at 682-7271 for more information. EOE 36-tfc-b



Madison Valley Manor is looking for a Hairdresser to cut and style hair for our residents one day a week. If you are interested in helping our residents look their best please contact Jayne or Darcel at 682-7271. 39-tfc-b

Harrison Public School is seeking a JH Girls Volleyball coach or a JH Volleyball co-Coach. We do have another coach who can share the responsibilities. The season begins when school starts on August 26th and ends on October 17th. The first game is September 8th. We are also looking for a head girls basketball coach or possibly an assistant girls basketball coach for the high school for the 2015-16 basketball season. Interested persons should contact school superintendent Fred Hofman at the school (406-685-3428) or stop on in. Letters of interest can be sent to Fred Hofman, P.O. Box 7, Harrison Public School, Harrison, MT, 59735 or via email: hofman@harrison.k12.mt.us Successful applicants will need to obtain proper coaching certifications, links to which can be obtained from MHSAs website: www.mhsa.org 39-2-b

Silver Dollar Saloon in Ennis hiring full time bartender. Apply in person Tuesday-Friday with Joiy or Terri. Must be 21 or older. No experience needed. 40-tfc-b

Bear Trap Grille looking for dishwashers, wait staff, line-cook. Inquire within or call 682-3323 or 908-507-5725. 24-tfc-b

Now hiring. 16 years old and up. Full and part time. Sign on bonus. Town Pump, Ennis. Apply online at townpump.com or in store. \$9-\$10 per hour. 40-3-b

Housekeeper needed bimonthly. \$300 per cleaning. 33 miles south of Ennis. References needed. 406-682-3906 or 661-706-2870. 40-4-b

NOTICE OF BOARD VACANCIES: The Madison County Board of Commissioners has vacancies on the Solid Waste Board, the Big Sky Transportation District Board, the Mental Health Local Advisory Council, and the Planning Board representing the Pony, Norris, Harrison Area. If you are interested in serving on any of these boards please contact the Commissioners' Office at 406-843-4277, by email at madco@madison.mt.gov, or visit our website at www.madison.mt.gov. 39-tfc-12

Now hiring part time cashier at the Cardwell Store. Call 287-5092 or stop by to apply. 28-tfc-b

Ennis Ambulance Service board vacancy. Ennis Ambulance Service Board has a vacancy to fill and is looking for an interested person to serve. This is a volunteer position and will help provide direction to the Ennis Ambulance Service. If you are interested, send a letter of interest to: Town of Ennis/Ambulance Board, PO Box 147, Ennis MT 59729, or drop off at Ennis Town Hall. Deadline for application is August 7, 2015. If you have any questions regarding this position, you may call 406-682-4287 or stop by Town Hall during regular business hours. 38-2-b

Admin/asst. bookkeeper needed. Ennis-Bozeman travel required. Part time. Send resume by email only with salary requirements to dbsmontana@gmail.com 40-2-b

WE'RE ON THE WEB!
WWW.MADISONIANNEWS.COM
CHECK US OUT!

FOR RENT

WINTER RENTAL
Furnished 3bd w/ garage. Dec. 2015 - April 2016. 406-451-3923 38-6-b

BARKER VILLAGE APARTMENTS:
1 bedroom unfurnished apartments available in Ennis. A/C, washer/dryer equipped, private location. 1 year lease, \$650 per month plus security deposit, utilities included, non-smoking, no dogs. Call Erich Vogeli, Manager at 406-682-5737. 15-tfc

Horse pasture for rent. 12 irrigated acres. Fresh water. Five minutes from Sheridan. 842-7737. 34-tfc-b

PETERSON'S DISCOUNT STORAGE Indoor & Outdoor RV/Boat storage, storage units. Ennis, 682-7442 18-tfc-b

FOR RENT: Large mobile home site 1 mile from Ennis. 100 x 150', water & sewer, country atmosphere, quiet. **NO DOGS.** 682-4854. 29-tfc

BARKER VILLAGE APARTMENTS:
1 bedroom furnished apartments available in Ennis. A/C, washer/dryer equipped, private location. 4 month lease, \$700 per month plus security deposit, utilities included, non-smoking, no dogs. Call Erich Vogeli, Manager at 406-682-5737. 15-tfc

ENNIS MINI STORAGE
New low prices with 10 x 10's starting at \$35. Larger sizes available. Call Melinda at 596-4288. 15-tfc

MADISON MANAGEMENT
Vacation and Long Term Rentals 570-5401 www.madisonmanagement.com 22-tfc

FOR RENT: Call Apex Management at 682-7112 or 581-0103 for long term or vacation rentals in Ennis and the Madison Valley. 1-tfc

FOR RENT in Ennis 20 x 30 heated shops/storage. RV Storage also available. 581-7687. 28-tfc-b

Rare Jeffers Rental Opportunity. Secluded country home. 4 Bed/2 Bath with 2 car garage. 3 miles from Ennis/Madison River. Spectacular 360 degree mountain views. Minimum one year lease, \$1300/month unfurnished. Immediate available call 406-682-7000. References/leave message 40-2-b

Beautiful half acre Mill Creek frontage property. 2bd/1 bath. Cozy Craftsman's style house, landscaped, sprinklers, (separate well) garage, washer/dryer. Sheridan/\$900 month. No smoking. No pets. 916-600-3018 38-tfc-b

3 BR/2Bath, W/D, near Ennis Post Office. \$600/month. 596-4596 38-2-b

FOR SALE

Cheyenne Tipi
18 feet, 10 oz. water repellent flame, mildew resistant door, liners. No poles \$500. Call 682-5615. Cash only. Serious buyers only. 34-2-b

1996 Cadillac Eldorado touring 2 door black. 77,700 miles. Great car. It has 2 sets of tires. Studs on rims and all weather on car. New 6 year battery. Car in great condition. All it needs is a paint job, and a new owner. Asking \$4,500. Call 589-5492 36-1-p

Brand new 30 KW exterior Gillette propane generator. Paid \$13,000, asking \$10,000 cash. 842-7700. 40-tfc-b

New Tree of Life gas/propane free-standing stove, bedroom dressers, used sofa & love seat, two new glass display hutches, wine cabinet, hall cabinet w/mirror, new fiberglass kitchen sink, and more. 406-579-8411 39-tfc-12

Firewood for sale. 406-570-2788 40-1-b

6 log dining room chairs. Includes two captain chairs. \$750. 682-3597 40-2-b

Whitfield pellet stove model profile 30. Four years old self starting thermostat controlled \$500. Call 682-3597 40-2-b

For Sale:
Like new! 22 Anderson casement windows (various sizes), and 5 fixed windows. Call Joyce Adams at 714-679-5351 for more information. 37-tfc-p

Flatbed, 18 ft trailer, dual. 3500 lb. axels, 7000 GVW, new tires, pulls great. \$2300 916-600-3018 38-tfc-b

2 Yamaha Vino retro scooters. 125 cc, low miles. \$1800 & \$1900. 916-600-3018 38-tfc-b

SERVICES

Madison Valley Caring & Sharing Hours:
Mon. Noon-2:00 p.m.
Sat. 9-11:00 a.m.
Wed. 6-8 p.m.
Lone Elk Mall, Unit 4, Ennis. 682-7844 30-tfc-b

BLAKE MCKITRICK CERTIFIED FARRIER
Horse Shoeing & Trimming
Call (406) 595-5379 26-4-p

DEEMO'S MEATS
Don't stress your livestock by taking them to slaughter. Let slaughter come to your ranch. To schedule an appointment, call 682-7306 or 600-0320 and ask for Scott. 20-tfc-b

Expert Tree Care
406-683-5592
406-865-0000
60' Lift Truck
ISA Spring is ideal removing and pruning time!

GOPHER EXCAVATING
Mini-Excavator/ 4x4 Tractor/ blade/bucket/ post auger : low impact / cross lawns : only 5 ft wide : dig for tree planting : dig deck supports : trench water / sewer / lines : blade new driveways : No Job too small ! Low Cost ! Senior Discount ! 406-842-7737 916-600-3018 38-tfc-b

WINDOW CLEANING
Chimney & Vent CLEANING
Gary Kinney
843-5486

GARAGE SALE

Yard/Garage Sale August 1st, 9 a.m. to 5 p.m. 200 Main, Pony Mont. Turn left between the Pony Bar and Masonic Lodge. Go straight 1 block. Miscellaneous house and garage items too numerous to list. 40-1-p

Summer Long Yard Sale. 1610 Hwy 287, Nevada City 9:30-5:30 pm Now through September 12. 32-1-b

HILARIOUS COMEDY CABARET
IN HISTORIC VIRGINIA CITY MT
THE BREWERY FOLLIES
May 22-September 26, 2015
SHOWTIMES 8PM & 4PM
RESERVATIONS RECOMMENDED
800-829-2969 EXT. 3 Tickets \$20

Place Your Classified
682-7755

Friday, July 31st 8 a.m. - 5 p.m.
222 West Fagin St., Ennis
Ammo, guns, books, household, hats, collectibles, much more. 40-1-b

Huge two family moving sale! Something for everyone! Furniture, tons of kids stuff (clothes, toys, games), appliances, guns, fishing, camping, 4 wheelers, golf cart, tools, and much more! Saturday, Aug. 1st at 8:00 am - 2:00 pm at 39 and 40 Tobacco Root Drive in the Golf Course subdivision. 38-2-b

Friday, July 31st
Saturday, August 1st
Lots of old stuff
210 S Madison St, Twin Bridges 40-1-b

Rummage Sale
Household items, clothes, furniture, etc.
9 am - 3 pm
August 1st
3 Depot Spur Lane, Ennis 40-1-b

Garage Sale in Ennis, Saturday, August 1st. 8:30-1:30 at Madison Valley Storge (turn at No. Energy) Unit #254-watch for signs. Collectibles, Birds Eye Maple chest, Eastlake dresser with mirror, French doors with beveled glass, lots of fun stuff--all priced to sell. No early sales, cash only. 40-1-p

ESTATE SALES

www.AbleEstateSales.com
WE BUY ESTATES or Manage Your Sale
Call Mike at 406-842-5251
FREE APPRAISALS

MISSING

Approximately 60 folding chairs from the Virginia City Community Center. First noticed missing on June 17. No questions asked if returned. If you have any information please call Virginia City Town Hall at 843-5321.

PUBLIC NOTICES

NOTICE OF FINAL BUDGET MEETING

On August 11th, 2015, at 8:00 p.m. the Twin Bridges School District #7 Board of Trustees will meet in the Montana Room of the Twin Bridges Schools for the purpose of considering and adopting the final budget of the district. The trustees' meeting may be continued from day-to-day until adoption of the final budget, but no later than August 25th, 20-9-131(2) and 20-9-151(1), MCA. Any taxpayer may appear at the meeting and be heard for or against any part of the budget. The regular August meeting will be conducted at that time on August 12th, 2014.

For further information please contact: Joyann Breakall, District Clerk, PO Box 419, Twin Bridges, MT 59754 (406-684-5656). (Pub. July 16, 23, 30, 2015) tbs

NOTICE OF FINAL BUDGET MEETING

On Wednesday, August 12, 2015, at 5:00 p.m. the Ennis School District 52 Board of Trustees will meet in the Ennis High School Room #3 for the purpose of considering and adopting the final budget of the district. The regular August meeting will also be conducted at that time. The trustees' budget meeting may be continued from day-to-day until adoption of the final budget no later than August 25th. Any taxpayer may appear at the meeting and be heard for or against any part of the budget. For further information please contact: Jon Wrzesinski, Superintendent, P.O. Box 517, Ennis, MT 59729 (406-682-4258). (Pub. July 23, 30, 2015) es

NOTICE OF PUBLIC HEARING ON A PROPOSED ISSUANCE OF REFUNDING NOTE UNDER MONTANA CODE ANNOTATED, TITLE 90, CHAPTER 5, PART 1, AS AMENDED MADISON COUNTY, MONTANA

NOTICE IS HEREBY GIVEN that the Board of County Commissioners (the "Board") of Madison County, Montana (the "County"), will meet on August 17, 2015 at [1:00] p.m., in the Commissioners' Conference Room at the Madison County Administrative Offices Building, 103 West Wallace, in Virginia City, Montana, for the purpose of conducting a public hearing on a proposal that the County pay, refund, redeem, and discharge its outstanding Hospital Facilities First Mortgage Revenue Note (Madison Valley Hospital and Clinic Project), Series 2008A, in the original aggregate principal amount of \$4,500,000 (the "Series 2008A Note") and the outstanding Promissory Note (Association or Organization) evidencing a loan from the United States of America, acting through the Rural Housing Service, Rural Business-cooperative Service, or Rural Utilities Service within the Rural Development Mission Area, the Farm Service Agency, or their successor Agencies, the United States Department of Agriculture (the "USDA"), in the original total principal amount of \$2,000,000 (the "2009 Note"), together with interest on the Series 2008A Note and the 2009 Note through the date of prepayment and redemption. The proceeds of the Series 2008A Note, which was purchased and is held by Big Sky Western Bank, were loaned by the County to Madison Valley Hospital, Inc., a Montana nonprofit corporation (the "Borrower"), pursuant to Montana Code Annotated, Title 90, Chapter 5, Part 1, as amended (the "Act"), and the proceeds of the 2009 Note, which is held by the USDA, were loaned by the USDA to the Borrower. The proceeds of the 2009 Note were applied to pay and redeem in whole the County's Hospital Facilities First Mortgage Revenue Note (Madison Valley Hospital and Clinic Project), Series 2008B (the "Series 2008B Note"), issued in the original principal amount of \$2,000,000, which is no longer outstanding. The Series 2008A Note and the Series 2008B Note (the "Series 2008 Notes") were issued to provide funds to finance or reimburse all or a portion of the costs of designing, constructing, equipping, and furnishing a new hospital facility known as the Madison Valley Hospital and Clinic consisting of a two-level, approximately 36,470 square foot facility located on 3.97 acres of land, and including an acute care hospital, a clinic, laboratory, radiology department, physical therapy, emergency and trauma rooms, offices, board rooms, a kitchen, and related improvements and equipment (the "2008 Project"), located on property adjacent to the then existing hospital at 217 N. Main Street (on Highway 287 North) in Ennis, Montana, the legal description of which property is on file with the County, and to pay certain costs and expenses incidental to the issuance and sale of the Series 2008 Notes. The address of the 2008 Project is 305 N. Main, Ennis, Montana.

To refinance the outstanding obligations of the Borrower in connection with the 2008 Project, the County proposes to issue under the Act its Hospital Facilities First Mortgage Revenue Refunding Note (Madison Valley Hospital and Clinic Project), Series 2015 (the "Series 2015 Note") in the estimated maximum aggregate principal amount of \$5,900,000. The Series 2015 Note will be payable from the revenues to be derived by a loan agreement with the Borrower and secured by the property and assets of the Borrower. The County will not pledge to the repayment of the Series 2015 Note its general credit or taxing powers and the Series 2015 Note will not constitute or give rise to pecuniary liability of the County. If all conditions precedent to the Series 2015 Note can be satisfied, the Series 2015 Note is currently expected to be purchased by Stockman Bank.

All persons interested may appear and be heard at the time and place set forth above, or may file written comments with the County Clerk and Recorder prior to the date of the hearing set forth above. Further information may be obtained from Peggy Kaatz Stemler, County Clerk and Recorder, telephone: (406) 843-4270.

Dated: July 20, 2015.
BY ORDER OF THE BOARD OF COUNTY COMMISSIONERS
County Clerk and Recorder
(Pub. July 23, 30, Aug. 6, 2015) mcc

NOTICE OF FINAL BUDGET MEETING

On the second Tuesday in August (August 11, 2015), at 7:00 p.m. the Sheridan School District No. 5 Board of Trustees will meet in the Charles B. Murray Media Technology Center for the purpose of considering and adopting the final budget of the district. The trustees' meeting may be continued from day-to-day until adoption of the final budget. Any taxpayer may appear at the meeting and be heard for or against any part of the budget. The regular August meeting will also be conducted at that time.

For further information please contact: Rebecca E. Larsen, District Clerk, PO Box 586, Sheridan, MT 59749 (406-842-5302). (Pub. July 23, 30, 2015) ss

NOTICE

The Madison County Commissioners will not be holding their regular Commission meeting on Monday, August 3, 2015, due to the Commissioners being unavailable that day. The next regular meeting following this date will be held on Monday, August 10, 2015. (Pub. July 23, 30, 2015) ss

TWIN BRIDGES K-12 SCHOOL DISTRICT #7 RESOLUTION BUDGET TRANSFER FOR SCHOOL SECURITY UPGRADES

On Motion duly made by TRUSTEE Gary Konen and seconded by TRUSTEE Randy Lowder the following resolution was presented to the Board:

WHEREAS, the Superintendent has presented the Board with a recommendation to transfer \$35,000.00 from the BUS DEPRECIATION FUN (211) to the BUILDING RESERVE FUN (261) of the District;

WHEREAS, the transfer is not from the debt service fund or retirement fund;

WHEREAS, the transfer is state or local revenue from a budgeted or nonbudgeted fund;

WHEREAS, the funds will be encumbered by June 30, 2019;

WHEREAS, the District may not increase its nonvoted levy for the purpose of restoring the transferred funds;

WHEREAS, the transfer is for improvements to school safety including new technologies for emergency response, new technology to manage security measures, securing egress, or general improvements to school safety.

NOW THEREFORE, be it resolved that the Board of Trustees of Twin Bridges K-12 School District No. 7, approves transferring transfer \$35,000.00 from the BUS DEPRECIATION FUND (211) to the BUILDING RESERVE FUND (261) of the District as recommended by the Superintendent.

Vote being had on foregoing Resolution, the results of which are as follows:

Name of Trustee
/s/Allison Wentzel, In Favor
/s/Gary Konen, In Favor
/s/Randy Lowder, In Favor

The Chairperson declared said Resolution

ENNIS MEALS ON WHEELS

TUESDAY THROUGH FRIDAY
11:30 AM - 1 PM
MADISON VALLEY MANOR

WEDNESDAY, JULY 29:

BEEF STEW W/POTATOES & CARROTS, FRESH FRUIT

THURSDAY, JULY 30:

PULLED PORK, BAKED BEANS, PEA SALAD, ICE CREAM & BANANA

FRIDAY, JULY 31:

CUBE STEAK, BAKED POTATO, CAULIFLOWER, CRANBERRY COFFEE CAKE

TUESDAY, AUGUST 4:

BRISKET, BAKED BEANS, ZUCCHINI, CRANBERRY SCONE

WEDNESDAY, AUGUST 5:

CRAB CAKES, RICE PILAF, MIXED VEGGIE, APPLE PIE

**PUBLIC RELEASE
FREE AND REDUCED-PRICE SCHOOL MEALS**

Twin Bridges K-12 School District #7 announces the 2015-16 policy for Free and Reduced-Price School Meals for students whose schools participate in the U.S. Department of Agriculture [National School Lunch Program and School Breakfast Program]. The complete policy is on file in the central office and may be reviewed by any interested party.

Children from households whose income is at or below the levels shown in the following chart may be eligible for free or reduced-price school meals.

Household Size	Free			Reduced Price		
	Annual	Monthly	Weekly	Annual	Monthly	Weekly
1	15,301	1,276	295	21,775	1,815	419
2	20,709	1,726	399	29,471	2,456	567
3	26,117	2,177	503	37,167	3,098	715
4	31,525	2,628	607	44,863	3,739	863
5	36,933	3,078	711	52,559	4,380	1,011
6	42,341	3,529	815	60,255	5,022	1,159
7	47,749	3,980	919	67,951	5,663	1,307
8	53,157	4,430	1,023	75,647	6,304	1,455
Each Additional Person	5,408	451	104	7,696	642	148

Application forms will be sent to each home with a letter to parents or guardians. To apply for free or reduced-price meals, households must fill out the application and return it to the school.

Applications may be submitted at any time during the year. Households will be notified of eligibility determination. At any time during the school year, program officials may verify an application. Households dissatisfied with the ruling of the officials have the right to a fair hearing. This may be done by calling or writing to:

Trustee Allison Wentzel, Chair PO Box 419, Twin Bridges, MT 59754 406-684-5656
[Hearing Official] [Address] [Telephone]

In accordance with Federal law and U.S. Department of Agriculture policy, this institution is prohibited from discriminating on the basis of race, color, national origin, sex, age, or disability. To file a complaint of discrimination, write USDA, Director, Office of Civil Rights, 1400 Independence Avenue, SW, Washington, D.C. 20250-9410 or call (800) 795-3272 (voice) or (202) 720-6382 (TTY). USDA is an equal opportunity provider and employer.

more than two-thirds of the Madison County population is reading OUR newspaper.



www.madisoniannews.com



SHOP SPACE FOR RENT IN ENNIS

All sizes available up to 1,200 square feet
Heated, insulated, large doors, half bath.
Gary at 581-3531 or Paul at 581-7878



Ennis Community Children's School
est. 1982

Ennis Community Children's School, a nonprofit preschool and childcare center is hiring a full time primary caregiver. Degree in education or a related field and/or experience working in a licensed childcare setting is a must. Wage DOE. Contact boardofdirectors.eccs@gmail.com for information and to apply

**GLACIER COUNTY JOB ANNOUNCEMENT
HUMAN RESOURCES DIRECTOR**

- Permanent, full-time position. Salary DOE.
- Job description and application available from Glacier County Clerk and Recorder's Office, 512 E. Main St., Cut Bank, MT, 59427; (406) 873-3609; gmhall@glaciercountymt.org; or from the Cut Bank Job Service.
- Application, resume' and three letters of reference will be accepted until 5 p.m. on Friday, Aug. 14, 2015.

Healthy Mouths Start Here

Healthy Smiles from the Start

Find Dental Care Tips for Mom and Baby at:
facebook.com/MTHHealthySmiles

Brought to you by the
Montana Dental Association
MontanaDental.org

Place Your Classified
682-7755

Three Great Services Under One Roof!

Locally Owned & Operated
Free Estimates - Licensed & Insured

Call Mike McKitrick Today!
406-682-4529

100 Prairie Way #2 - Ennis, Mt 59729

The Soil and Water Conservation Districts of Montana discuss sage grouse

Submitted by Ann McCauley
MONTANA ASSOCIATION OF
CONSERVATION DISTRICTS

A landmark agreement to streamline and enhance efforts to protect and conserve sage grouse habitat on Montana's private lands was signed by the Soil and Water Conservation Districts of Montana, USDA Natural Resources Conservation Service and the State of Montana yesterday at the Capitol in Helena.

This agreement, the first of its kind to be signed in the west, comes on the heels of Governor Steve Bullock's state sage grouse program and Natural Resources and Conservation Service's renewed commitment to the Sage Grouse Initiative, an NRCS-led partnership initiative. The Initiative provides private landowners across the

west with working land solutions that also provide for sage grouse habitat.

The Soil and Water Conservation Districts of Montana, an 80-year-old nonprofit organization that serves Montana's 58 conservation districts, has been engaged with sage grouse conservation at the local level since 2011. They employ four range conservationists in eastern Montana to implement the Sage Grouse Initiative program with support from local conservation districts, non-government organizations, state and federal partners.

This agreement further solidifies the commitment by these partners to build and maintain a framework of cooperation to provide Montana ranchers with a local, common sense approach to sage grouse

conservation efforts. "(Conservation districts) do not have a lot of money and we rely on our state and federal partners for funding, but what we do have is the trust and working relationships with the local landowners and communities where sage grouse live," said

Jeff Wivholm, president of the Soil and Water Conservation Districts of Montana.

For more information about Montana's sage grouse initiative and local partnerships, visit <http://macdnet.org/programs/events/sage-grouse-initiative-in-montana/>.



Photo courtesy of macdnet.org

Ruby Valley Hospital Physical Therapy
Occupational & Speech Therapy
Hands on care for all your body needs.

Orthopedic & Sports Injuries
Total Joint Rehabilitation
Back & Neck Care
Sore Stressed Muscles
Tension Headaches & Chronic Pain

Self Care
Home Safety
Adaptive Equipment
Hand, Wrist - & Elbow Syndromes
Neurological Rehabilitation

Available Mon.-Fri. at Ruby Valley Hospital
220 E. Crofoot, Sheridan, MT 59749-9508 **406-842-5081**

GRAHAM DRILLING
SHERIDAN, MT

Water Well Drilling, Solar Pump Systems for Stock Water, Pump Sales Installation, Service & Repairs
Serving Residential & Commercial Customers in Madison County for over 30 years
Quality Service at a Fair Price
Phone (406) 842-5214 or (406) 682-5290
WWW.GRAHAMDRILLING.COM

D&D Auto, Inc.
AUTO & TRUCK SALES
We Are YOUR Go to Guys!
Auto & Truck Repair - Gas or Diesel - All Makes & Models

We Make Hydraulic Hoses
New Tires, Wheels & Tire Repairs
Engines & Transmissions Installed - Car & Truck Accessories
We Install Windshields - Alignments

ENNIS • 682-4537
Daily Parts Deliveries to Alder, Sheridan & Twin Bridges Areas
24 Hour Towing (CELL 406-570-9872)

KEEP WORKING!!!
Power assist from your pickup to your tractor/combine.

G&J ENTERPRISES
MOBILITY SPECIALISTS
406-248-5767 | gandjenterprises.com

AREA SENIOR MEALS

SENIOR MEALS, VIRGINIA CITY
Summer Senior meals for Madison County Seniors 60 and over will be served at the Wells Fargo on Wednesdays and Fridays beginning May 20 from 11:30am to noon for \$3.00.

MEALS FOR SENIORS, TWIN BRIDGES
The TBS&CC provides meals for seniors every Tuesday and Friday at 11:30 a.m. at the Wagon Wheel Restaurant in Twin Bridges for seniors 60 years and up. (Spouse and caregivers are invited.) Donations for meals are appreciated.

RUBY VALLEY FOOD PANTRY, SHERIDAN
Open Saturdays from 10 a.m. - noon. Located at 114 N. Main St. in New Beginnings. Serving the Ruby Valley from Silver Star to Virginia City. Contact Doris at 842-7161 or Wannetta at 842-5783 for more information.

MEALS ON WHEELS, SHERIDAN
The Sheridan Senior Center offers meals for seniors 60 years and over Monday - Friday. Seniors may choose to eat at the senior center, family style for \$3.50 or have their meal delivered for \$4.00. Delivered meals are within the city limits of Sheridan and should be called in by 10 a.m. Call Shirley Sand at 842-5966.

Ruby Valley Baptist Church
Tony Shaw, Pastor
842-5602

Sunday School 9:45 a.m.
Worship Service 11 a.m.
Sunday Evening 6 p.m.
Wednesday Eve 7 p.m.
One block behind IGA, Sheridan

Find Fellowship With Us

Rocky Mountain Baptist Church
682-4949

Sunday School 9:30 a.m.
Morning Worship 11 a.m.
Evening Service 6 p.m.
Mid-Week Service, Wednesday 6 p.m.

606 Comley Way, Ennis
6 Blocks South of City Complex

Located in the heart of Madison Valley for the Hearts of Madison Valley

Dayspring Church
Worship 10:00 a.m.
Sunday School/Nursery
Non-Denominational Christ Centered, Spirit Led Worship
Joel Trenkle/Pastor
Check website for ministries: dayspringsheridan.com
596-0707 • 3648 Hwy 287
Between Sheridan & Twin Bridges

HARRISON COMMUNITY CHURCH
Harrison, Montana
Adult Bible Study ~ 9:30 a.m.
Sunday School & Church Services ~ 10:30 a.m.
Pastor Joe Miller
Come Worship & Sing Praises To Our God. Spread the Word!

CHURCH OF JESUS CHRIST OF LATTER-DAY SAINTS
Sheridan Ward - Visitors Welcome
Sacrament Meeting
Sundays, 10:00 a.m.
Sunday School
11:20 a.m.
R S & Priesthood
12:10 p.m.
Mutual (Youth Group)
Wed. 7:00p.m.
3560 | MT State Hwy 287
Sheridan 842-5860
Bishop Dustin 684-5255

Liturgy Schedule
St. Patrick, Ennis
Sunday ~ 8:30 a.m.
St. Mary, Laurin
Sunday ~ 10:30 a.m.
Deacon Andy Dorrington,
Pastoral Administrator ~ 842-5588

Shepherd of the Hills Lutheran Church
The Church of Word and Sacrament
Visitors Welcome

Pastor Ken Stensrud
Lenten Services starting Feb. 18 at 7 pm

- Sunday Service 9:00 am
- Bible Study 10:15 am
- Sunday School 10:15 am

Lent Services soup/supper 6 p.m.
Corner of Madison and Arnette St.
Ennis, Montana 406-684-4950

Madison Valley Presbyterian Church
WORSHIP
September - April ~ 11 a.m.
May - August ~ 9 a.m.
Everyone Welcome Fully Accessible
Rev. Jean M. Johnson
682-4355 ~ Ennis
Corner of S. Charles & W. Hugel

FISHERS OF MEN
HOLDING FORTH THE WORD OF LIFE:
Dr. Ray Teston
Pastor
Sunday School ~ 9:45 a.m.
Morning Worship ~ 11:00 a.m.
5050 Hwy 287, PO Box 668, Ennis, MT
Phone 682-4244 SBC
MADISON VALLEY BAPTIST CHURCH
Aides for the hearing impaired

CHURCH OF JESUS CHRIST OF LATTER-DAY SAINTS
Ennis Branch
Sacrament Meeting
10:00 a.m.
Sunday School
11:20 a.m.
R S & Priesthood
12:10 p.m.
Family History Center
682-4911, 682-7415, 682-3614
Pres. Thompson 682-7415
133 MT Hwy 287

Christian Science Society
Sunday Service & Sunday School 10 a.m.
ALL WELCOME
Each week a Bible lesson full of healing Christian concepts is read aloud in our Sunday service.
4983 US Hwy 287 N. • Ennis, Montana
www.spirituality.com

THE BAHAI FAITH
To look always at the good and not at the bad. If a man has ten good qualities and one bad one, to look at the ten and forget the one; and if a man has ten bad qualities and one good one, to look at the one and forget the ten. Never to allow ourselves to speak one unkind word about another, even though that other be our enemy.
451-3923 or 1-800-UNITE
www.baha'i.org

ENNIS ASSEMBLY OF GOD
Love God, Love People
SUNDAY SERVICE SCHEDULE
Bible Study 9:45 a.m.
Worship Service 10:45 a.m.
Children's Church 10:45
Wednesday Youth Group 6:30 p.m.
Wednesday Prayer Meeting 7:00 p.m.
402 Madison Ave - Ennis, MT
682-4197

NEW BEGINNINGS CHRISTIAN FELLOWSHIP
Your Local Assembly of God Church
114 N. Main, Sheridan
842-5845
Pastor Duane Deshner
Sunday Service
10:30 a.m. (Children's Ministry)
Wednesday (Kids/Youth)
6:30-8:00 p.m.
Kid's Club (3 yrs-4th grade)
Pre-Teen Youth Group (5th-6th grade)
Youth Group (7th-12th grade)
Ruby Valley Food Pantry
Saturdays: 10:00 a.m.-Noon
We are a church dedicated to serving this valley!

Ruby Valley United Methodist Parish
Invites You To Worship With Us
Pastor Paul Stearns
Office: (406)842-5934
Home: (406)842-7732
Church of the Valley Twin Bridges
Sunday School 11:00 a.m.
Worship 11:00 a.m.
Youth Group Weds at 6:30 pm
Bethel UMC
Sheridan
Worship 9:00 a.m.
Sunday School 10:15 a.m.
Youth Group Sunday evenings
Ready Set Grow Preschool
Contact Kaycee Gilman 842-5311

Madison County Episcopal Churches
In full communion with the Evangelical Lutheran Church in America
Join Us for Sunday Worship!
Trinity Jefferson/Ennis
7:15 a.m.
11:00 a.m.
St. Paul's Virginia City
Sunday
9:00 a.m.
Christ Church Sheridan
Sunday
10:00 a.m.
Bible Study 9:00 a.m.
www.rvec.org
Prayer requests:
682-4788 843-5296 842-7713

GRACE COMMUNITY FELLOWSHIP
In Association with The Conservative Baptists of America
COWBOY CHURCH - Nevada City
10 am - All Summer
Christ-centered, Bible Based Teaching
Open Question Forum
Tel. 406-842-5915
Pastor Tom Luksha

King Crossword
Answers
Solution time: 25 mins.

L	A	N	E	S	W	I	M
I	R	O	N	M	A	P	K
M	I	S	C	C	L	A	R
B	A	Y	O	N	E	T	A
R	U	E	N	I	C		
L	I	N	E	N	F	I	S
A	R	E	F	A	X	O	R
C	A	B	I	N	E	T	
	N	E	W	H	A	M	
P	A	S	H	A	C	O	R
I	N	T	E	R	N	E	T
T	O	U	R	O	D	E	S
A	N	N	E	G	E	L	D

ALCOHOLICS ANONYMOUS
Meeting Every Thurs. at 8 p.m., Church of the Valley, Twin Bridges
ALANON MEETING
Same Time - Same Place

ALANON
Twin Bridges • Church of the Valley
Thursdays, 8 pm

ALANON
Pony School House • Weds. 7 pm
Suzy 685-3692

ENNIS ALANON
Monday - 10:45 a.m.
Basement of Madison Valley Presbyterian Church, Ennis
Hugel & Charles
CALL 682-5097 or 682-7023

"Keep it Simple."
A.A. MEETING
Bethany Hall, Sheridan
(behind Methodist Church)
Wednesdays ~ 8 p.m.

Vennis Over The Hill Unity Group
Faced with a drinking problem? Perhaps Alcoholics Anonymous Can Help.
SUAZ.N. - 10 a.m., No Smoking, Virginia City Library
MON. - Open, 7:30 p.m., Basement of M.V. Presbyterian Church, No Smoking
WED. - 7:30 p.m., Trinity Church in Jeffers
FRI. - Open, 7:30 p.m., Basement of M.V. Presbyterian Church, No Smoking
682-3490, 682-7023 Ennis
843-5352 Virginia City

Celebrate Recovery
Meets every Saturday at 6 p.m. & starts with a meal.
DAYSRING MISSION
3648 Hwy 287, Sheridan
596-0707

CROY
construction

Licensed - Insured - Professional
Custom Homes - Residential - Commercial

Gary Croy
owner

406-581-3531 (cell) or 406-682-7236 (office)
P.O. Box 63 - Ennis, Montana
bid@3rivers.net

HOME PARK
Assisted Living

Brand new home • Safe and cozy
Comfortable, loving environment
Private rooms

596-3800 • 504 Ray Lane • Sheridan, Montana
homeparkassistedliving.com

South West Septic
Locally Owned & Operated
Portable Toilet Rentals

They say the early bird gets the worm. As winter draws to a near and the Spring Cleaning & Construction season gets under way, we want to make sure your order gets in before our reservations fill up.
Call (406)842-7854 to place your order.

Don't delay! With so many weddings, graduation parties and Memorial Day right around the corner, South West Septic wants to make sure you are taken care of. **Call us today!**

www.swsmt.com • swsmf@hotmail.com
Ennis 682-7854 • Sheridan 842-7854 • Cell 596-7854

Treasure State Shuttles

Kelley Knack 406-579-5442
Marilyn Jenkins 406-581-6759
skknack22@gmail.com
PO Box 52, Ennis, MT 59729
24/7/365

Get Results.

s.hill@madisoniannews.com

ENNIS NEEDS

GUYS LIKE US
HANDYMAN SERVICE

PROFESSIONAL • RELIABLE • AFFORDABLE

All Home Repairs, Installations, Painting, Property care taking, Remodeling

WHEN THE BIG GUYS ARE TOO BUSY CALL GUYS LIKE US

NO JOB TOO BIG OR SMALL

Ed Hatlee
406 581 3178
406 682 4483

MADISON VALLEY RURAL FIRE DEPARTMENT
FIRELINE
By Steve Orr | MADISON VALLEY RURAL FIRE DEPARTMENT

A busy year for the Madison Valley Rural Fire Department

It has been some time since our readers have seen a Madison Valley Rural Fire Department Fireline. It has been a very hectic year for the members of the MVRFD. This year marks the 100th year of the existence of the fire service in the Madison Valley. The Ennis Fire Department, from which the MVRFD evolved, was first established on April 10, 1915.

As part of the celebration of our 100th year, the MVRFD campaigned to host the 2015 Montana State Volunteer Fire Fighters Conference, which was successfully awarded in June 2013. Hosting the conference is a demanding task itself, but as work progressed for the volunteers, the Montana State Fire Chief's Association and the Montana Emergency Medical Services Association decided to hold their conferences jointly, making the task of planning and preparation even more daunting. This was the first time this had been attempted. As a result, the MVRFD ultimately ended up hosting the first Montana Joint Emergency Services Conference and Training Symposium from June 10 through June 13.

Thanks to the support of the community, Madison County Emergency Service Personnel and Emergency

Service Personnel from around the state and Canada, the event was a great success with outstanding speakers and trainers that brought a wealth of instruction and training.

Before the dust had settled on the 2015 Montana Joint Emergency Services Conference, members of the MVRFD started preparation for the annual MVRFD Fourth of July pancake breakfast, which is the major fundraiser for the MVRFD, was very successful again this year, thanks to the support of the community and visitors to the area. The MVRFD served breakfast to more than 1,000 people from 6 to 10 a.m.

The MVRFD was extremely privileged, along with the Ennis Volunteer Ambulance Service, to be chosen as the Ennis Fourth of July parade honorees by the Ennis Chamber of Commerce parade committee. This honor was truly overwhelming.

In addition to planning and preparation for these events, the routine meetings and training and normal response to emergencies had to be undertaken. The MVRFD has responded to nearly 50 calls for service so far this year, including two structure fires. The most notable structure fire occurred in January with

the Sportsman's Lodge fire, where MVRFD, Virginia City rural and Sheridan volunteer firefighters battled the blaze for more than 15 hours.

On June 27, the MVRFD was dispatched to a structure fire in the Sundance Bench subdivision in the south end of the Madison Valley. In spite of narrow roads, remote location and limited access, the MVRFD, with mutual aid from U.S. Forest Service firefighters and Hebgen Basin Fire Department firefighters, was able to make access the structure and suppress the fire saving the structure. Firefighters combated the fire, which was caused when lightning struck the building, for more than nine hours.

As we are just starting to enter what may shape up to be a very active fire season, the members of the MVRFD ask all of our citizens in the Madison Valley to be very cautious in their outdoor activities.

As of July 6, Madison County is currently under stage one fire restrictions, which prohibit:

1. Building, maintaining, attending or using a fire or campfire except within a developed recreation site, or improved site.
2. Smoking, except within an enclosed vehicle or building, a developed

recreation site or while stopped in an area at least three feet in diameter that is barren or cleared of all flammable materials.

Exemptions:

- a. Persons with a written permit that specifically authorizes the otherwise prohibited act.
 - b. Persons using a fire solely fueled by liquid petroleum or LPG fuels.
 - c. Persons conducting activities in those designated areas where the activity is specifically authorized by written posted notice.
 - d. Any Federal, State or local officer or member of an organized rescue or firefighting force in the performance of an official duty.
 - e. All land within a municipal boundary is exempt unless imposed locally.
 - f. Other exemptions unique to each agency.
- If you have any questions or concerns, Madison Valley Rural Fire Chief Shawn Christensen invites you to contact us at 682-3311. We look forward to hearing from you. If no one is available, please leave a message and we will return your call as soon as possible. Please visit our home page at www.mvrfd.org/. Remember to sign our guest book and let us know what you think.

Off to College...We are Where You are!

Download Our eMobile App Today!

Do your banking at any of our 34 statewide locations!

Stockman Bank
MONTANA BANKING, PURE & SIMPLE™

© 2015 Stockman Bank | Member FDIC

WWW.STOCKMANBANK.COM

W. Williams St. - Ennis - \$169,000
2bd, 2 ba, 1280 +/- sf • adorable newly remodeled bungalow • new kitchen, fixtures, cabinets • one block from Main St, private setting • charming interior with bay window • great yard and storage shed

1 Fraker Loop - Whitehall - \$242,000
3bd, 2 ba, 1653 +/- sf • 1.43 +/- acres, landscaped • energy efficient, custom home • over-sized garage, chef's kitchen, gas fireplace • granite counter tops, new appliances • hard wood floors, high end finishing

13 Redtail Hawk - McAllister - \$284,000
3bd, 2 ba, 1624 +/- sf • 15.51 +/- acres, landscaped • log home, covered deck, attached 2 car garage • 50' x 25' greenhouse, garden beds • hardwood floors, large master bath • strong water rights

5 Kildeer Court - Ennis - \$299,000
1.42 +/- ac • 3 bd, 2 ba, 2004 +/- sf • vaulted ceilings, huge family room • wide open floor plan, massive views • stone fireplace, wood & tile floors • landscaped, fenced, 22 x 42 shop • newer construction, immaculate home

Centennial Drive - Pony - \$335,000
.778 acres • 2bd/2bth, 2400 sq ft • Pony creek borders property • plenty of space for entertaining • large wrap around decks • original Pony Jail included with property/livestock operation

Bear Creek Loop - Cameron - \$485,000
2 bd, 2 ba, 2160 +/- sf • 45 +/- acres, newer carriage house • move right in, wide open floor plan • great value, low maintenance, motivated sellers • 3 car garage + storage, bring your horses • massive views, recreational paradise

North Meadow Creek - \$539,000
3.27 acres • 3bd/2bth w/ office, 2,704 sq ft • 1600 Sq Ft Shop to fit RV • spectacular views • close to all recreation activities • beautifully landscaped

Madison River Ranches - \$795,000
20+/- acres with beautiful log home • 1.5 miles of private Madison River fishing access • Gated community • Spectacular views of the Madison Range & Madison River • End of road privacy, lots of wildlife

Nobody Sells More Real Estate Than RE/MAX!
Call us at 406-682-5001 to find out why!

Bill Mercer, Broker/Owner
RE/MAX Mountain Property



RESISTING CHANGE SINCE 1863!

*Some folks made a fortune here...
But what they left behind is priceless.*

All of Montana has the deepest pride and affection for Virginia City. No more colorful pioneer mining camp ever existed. Dramatic tales of the early days in this vicinity are legion. Rich placer diggings were discovered in Alder Gulch in the spring of 1863 and the stampede of gold seekers and their parasites was on! Sluices soon lined the gulch and various "cities" blossomed forth as trading and amusement centers for free-handed miners. Virginia City, the best known of these and the sole survivor, became the Capitol of the Territory.

The very much alive ghost town, Virginia City, Montana, is frozen in time. It is a remarkably well-preserved Old West Victorian gold mining town just 50 miles west of Yellowstone National Park (90 miles by road). When the gold ran out, there was still enough left so that homes and businesses were occupied, but there was not enough wealth to remodel the buildings. So it froze, and now represents the whole Victorian era. Virginia City is the true and original Old West. It is a gem, held within an incredibly rich area of natural beauty, recreation and history.

Come rediscover Virginia City & Nevada City, Montana!



come and
STAY & PLAY
today!



A MELODRAMA PLAY
PLUS OUR VARIED, VIGOROUS, VAGARY
OF VIVACIOUS VAUDEVILLE VARIETY ACTS!

May 22-June 21
BOX & COX

June 23-July 26
THE BLUNDERING HERD

July 28-Aug 23
THE PHANTOM OF THE OPERA

Aug 25-Sept 20
BOX & COX



SHOW TIME | Tu, W, F & Sat 7pm
| W, Th, Sat & Sun 2pm

TICKETS | Adult \$20
College, Seniors, Military \$17
Children 17 & under \$10
Group discounts available

1.800.829.2969
www.virginiacityplayers.com

NOW AIR CONDITIONED!

BREWERY FOLLIES
NONSENSE AND PARODY
HILARIOUS COMEDY CABARET
H.S. GILBERT BREWERY



a cabaret show...wild enough for any old-time miner!
-David G. Hesser, SUNSET MAGAZINE
MAY 22 - SEPTEMBER 26, 2015



SHOWTIMES 4 PM & 8 PM
CALL FOR RESERVATIONS
800-829-2969 EXT 3 TICKETS \$20

\$129
to those who have
spent the night at the
Fairweather Inn or
Nevada City Hotel

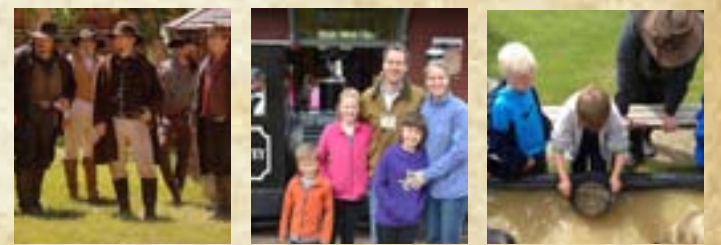
**FAMILY
FUN DAY PASS**
Good for 2 days for families of 5
Purchase at VC Depot or NC Museum

\$69

\$49
for Madison County
Residents, Military,
State Employees
& those who have stayed
the night at a Montana Hotel
(receipt required)

Packages include:
ENTRANCE INTO
MUSEUM, UNLIMITED
TRAIN RIDES, GOLD
PANNING FOR A FAMILY
OF FIVE.

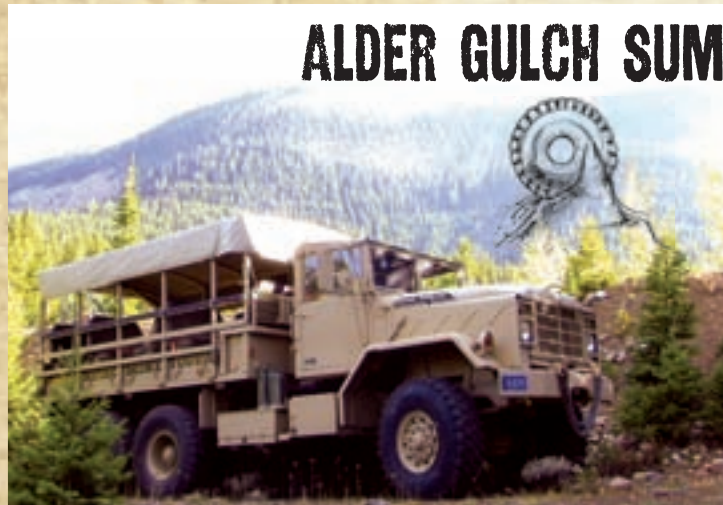
**MONTANA HERITAGE
COMMISSION**
1.406.843.5247
WWW.VIRGINIACITYMT.COM



LIVING HISTORY EVERY WEEKEND
between mid-May through mid-Sept!



August 1-2 Miner's Court
August 8-9 Murphy and Brady



ALDER GULCH SUMMIT TOURS

PRESENTED BY NELSON STUDIOS LLC

Enjoy a 90+ minute ride through the heart of Montana's gold country. Learn the fascinating history behind the single largest gold strike in the Nation's history.

Enjoy live historical interpretation as you see the wonders of Alder Gulch aboard Colossus, the largest off road tour truck in Montana.

TOURS DEPARTING HOURLY
JUNE-AUGUST EVERY DAY

Upcoming 2015 Events

July 31	Growling Old Men, Elling House	406.843.5507
Aug 1	Road Agent Rally	406.843.5900
Aug 7-9	40th Annual Virginia City Art Show	info@virginiacity.com



Montana Heritage Commission
PO Box 338
Virginia City, MT 59755
www.virginiacitymt.com

Virginia City Area Chamber
PO Box 218
Virginia City, MT 59755
www.virginiacity.com



Find us on Facebook! Virginia City Montana {Chamber of Commerce}

This advertisement was paid for by the Montana Heritage Commission through the accommodation taxes.

OUTPOSTEVENTS.NET

B10 Thursday, July 30, 2015

GO TO outpostevents.net FOR A COMPLETE LISTING OF EVENTS

FRIDAY JULY 31

Growling Old Men Concert, Virginia City

The evening program, ideally suited for an intimate venue such as the Elling House, includes a blend of well-rehearsed material and few new songs hot off the press—Ben and John like to keep it fresh with an edge of improvisational risk taking. They strive to contrast simplicity with complexity—all with good tone and a warm sense of humor.

Sheridan all-class reunion/festival, Sheridan
Barbecue and music at the Sheridan Kiwanis park. This is a great weekend to reconnect with your neighbors and old friends.

SATURDAY AUGUST 1

Road Agent Rally, Virginia City

9 a.m., Dancing Buffalo and train depot. Virginia-Nevada City welcomes the "Road

Agent Rally." Travel the early roads of Montana for a fun weekend of music, good grub, great shops, entertainment and all of the wonderful history and venues we have to offer.

Discussion about diabetes, Ennis
11 a.m., Madison Valley Public Library. Els Mann will be discussion diabetes prevention and treatment in an informal discussion setting.

Bale Beer Fest, Virginia City

The newest Brewers in the state show off their beer under the big tent from 12 to 7 p.m. Music by Chad Ball playing folk, blues, rock and country.

Sheridan all-class reunion/festival, Sheridan
This is a great weekend to reconnect with your neighbors and old friends.

Quilt guild quilt show, Sheridan
10 a.m., in conjunction with Sheridan Festival. Old high school gym. Refreshments will be served.

SUNDAY AUGUST 2

Jackson's Garden annual brunch, Sheridan

Jackson's Garden sixth annual Sunday brunch from 10 a.m. to 12 p.m. An ecumenical worship service will be held at 9 a.m. at the garden prior to the brunch. Quiche, sausage, potatoes, fruit and an amazing array of baked items for a donation. 2 miles east of Sheridan on Mill Creek Road.

4th annual Madison Triathlon, Ennis

Swim 1,200 yards, bike 23 miles and run 6 miles. Please send an email to Sam Kormoe at sam@yespi.net for more information or how to help.

Sheridan all-class reunion/festival, Sheridan

Ecumenical church service and infamous brunch at Jackson's garden. This is a great weekend to reconnect with your neighbors and old friends.

Quilt guild quilt show, Sheridan

12 p.m., in conjunction with Sheridan Festival. Old high school gym. Refreshments will be served.

members and their guests. Come visit, exchange business cards and brochures, and be sure to enjoy appetizers and cocktails.

FRIDAY AUGUST 7

Wild West Ghosts, Ennis

Mark and Kim Todd will discuss their book *Wild West Ghosts*. The book results from their paranormal research throughout the west including Virginia City. This free author talk is sponsored by Friends of the Madison Valley Public Library.

SATURDAY AUGUST 8

40th Annual Virginia City Art Show, Virginia City

Aug. 7-9, Virginia City boardwalk, Community Center, Elks Lodge. Stroll along the boardwalks and enjoy fine art of artists from all over Montana and the Pacific Northwest. Artists will be on the boardwalk and in the Community Center Building on the corner of Idaho and Van Buren Streets on Friday from 10 a.m. - 6 p.m., Saturday from 10 a.m. - 7 p.m., Sunday from 10 a.m. - 4 p.m. Saunter along the boardwalks and support the arts! Quick draw event will be happening this year.

Used book sale, Ennis

9:30 a.m. Friends of Madison Valley Public Library are having a used book sale as a fundraiser. Weather

permitting it will be on the front lawn of the library. Hard bounds, paperbacks, fiction and nonfiction will be available.

WEDNESDAY AUGUST 12

Get to know your neighbors speaker series, Laurin

Come join us for a community potluck and presentation on Golden Eagles at the Woodson Ranch Visitor Center. We will provide chili—bring a side dish and come learn about Golden Eagles!

THURSDAY AUGUST 13

Madison Valley Book Club, Ennis

1 p.m. at Madison Valley Public Library. Discussion of *The River of Doubt*, Theodore Roosevelt's *Darkest Journey*. Discussion led by C. Millard.

FRIDAY AUGUST 14

Evening with the artists, Virginia City

Kat Houseman and Carleton McCambridge will be our featured artists for this Evening with the Artists. Please come and enjoy the artists, their incredible art and folks that enjoy the same. Refreshments will be served.

SATURDAY AUGUST 15

Willson & McKee Concert, Virginia City

Kim McKee received 15 years of classical training before turning to traditional Irish and Scottish music, 28 years ago! She moves effortlessly between her instruments and her palate includes hammered and mountain dulcimer, folk harp, accordion, guitar and bodhran and she never passes up an opportunity to teach a Ceili dance. Ken Willson is the pulsing folk drive, with an engaging tenor voice and tasteful guitar and bouzouki foundations to the unique material. A weaver of wit and tales, he can also spin a fine Ceili swing on the dance floor.

REGULAR WEEKLY EVENTS

MONDAYS

Commissioner's Meeting, Virginia City
Madison Co. Commissioners meet every Monday, unless noted, public welcome. 9:30 a.m. Annex Building

TUESDAYS

Madison County Mental Health Local Advisory Council, Virginia City
Meeting the first Tuesday of each month from 4:30 - 6:30 p.m. in County Commissioner's conference room in Broadway Annex.

Summer Reading Program, Ennis
Madison Valley Public Library. 11 a.m. - 12 p.m.

Children's Story & Craft Time, Virginia City
Every Tuesday at 10:30 a.m. at the Thompson Hickman Library.

Movie Night, Virginia City
Movie Night at the Thompson-Hickman Madison County Library Every OTHER Tuesday night at 7:00 p.m. Please call 406-843-5346 to find out what is playing!

WEDNESDAYS

Tennis, Ennis
9 a.m. til 2p.m., come play tennis at the Madison Meadows Golf Course. All levels welcome.

Open Sew, Ennis
Open Sew with the Quilt Guild- open to the public from 2-5pm at Madison Valley Public Library

Open Table Tennis, Pony 7 - 9 p.m.

For all ages and skill levels - Two Tables At the Pony School Info @ 685-3481

TOPS, Ennis

Weekly weigh-ins are at 8:30am Meetings at 9am. MVMC in downstairs conference room. Jeanne, 682-3299

Books and Babies, Ennis
Madison Valley Public Library, 10:30 a.m. 682-7244

Grief Support Group, Ennis

Everyone welcome. Meets every Wednesday, 5:30 p.m. Madison Valley Baptist Church

THURSDAYS

MV Women's Club
FIRST THURS OF EA. MONTH
NO meetings June, July or August.

MV Manor Auxiliary Meeting, Ennis
SECOND THURS OF EA. MONTH
1 p.m., Madison Valley Manor SunRoom

Sheridan Farmer's Market
4:30 - 6:30 pm at corner of Mill and Main.

Children's Summer Reading Program, Sheridan

10 a.m. every Thursday. Summer's theme: "Every Hero Has a Story". Sheridan Library

FRIDAYS

Tennis, Ennis
9 a.m. til 2p.m., come play tennis at the Madison Meadows Golf Course. All levels welcome.

Story Time, Ennis
Pre-K to Grade 2, 11 a.m. Madison Valley Public Library. 682-7244.

Live Music, Ennis
Willie's Distillery hosts live music in the tasting room, 5:30 p.m.. See the weekly ad on this page for performers.

Couples League, Ennis
Madison Meadows. 5 p.m. every Friday. Call pro shop for more info.

SATURDAY

Farmer's Market, Ennis
9 a.m. - 12 p.m., Sportsman's Lodge

Farmer's Market, Twin Bridges
9 a.m. Main Street City Park

FRIDAY-SATURDAY-SUNDAY

Live Music - Norris
7 p.m. See the weekly ad on this page for weekly performers.

THURSDAY AUGUST 6

Business After Hours, Ennis

BAH hosted by Berkshire Hathaway from 5 p.m. to 7 p.m. Free networking event open to all Chamber

ESCONDIDOS
Authentic Mexican Restaurant

OPEN
Monday through Saturday
5 - 9 p.m.
Now Serving Lunch!
11 am - 2 pm

Reservations accepted
682-5444

50 N. Montana Hwy 287
Next to Trenz Salon

NORRIS HOT SPRINGS

MUSIC THIS WEEKEND:
Fri 7/31 - Jon Cheryl
Singer/Songwriter
Sat 8/1 - Jeff Carroll
American Roots
Sun 8/2 - Band of Lovers
Indie Folk/Pop

HOURS:
Pool & Cafe
(June, July & August)
10 - 10 everyday
but Tuesday!

norrishotsprings.com
406.685.3303

David Perlstein
Always Buying Montana History

Specializing in Montana historical artifacts & memorabilia.

Advertising Signs • Ephemera • Maps
• Brewerianas • Stereoviews
• Photos • Yellowstone Park
• Mining History

406-579-3500
davidperlstein@gmail.com
MONTANAPICKER.COM

Flager Landscaping
Since 1993

Dick & Ben Flager
Alder, Mt

Residential Commercial
Licensed & Insured

Trees, Irrigation, Shrubs, Edging, Walkways Border Design & Free Estimates

We will come back!

WE DO QUALITY WORK WITH QUALITY PRODUCTS.

Office 842-5330 - Fax 842-7282

All Class Reunion

Saturday August 1, 2015 5:30 pm Main Street Park

SHERRIE HUFF

Each Class must appoint a Class organizer responsible for notifying class members and sending a head count to Sherrie Huff @ 842-5491. You will need to provide tables and chairs for your class if possible.

There will be an Open mic for those wishing to perform and awards for best attendance, best performance and best table decoration or memorabilia display.

Opportunity to purchase meals and drinks from local businesses

Contact Sherri Huff for more info 842-5491

WILLIE'S DISTILLERY
ENNIS, MONTANA

WILLIE'S DISTILLERY UPCOMING EVENTS:
322 E MAIN STREET, ENNIS 406-682-6117
WWW.WILLIEDISTILLERY.COM

EVERY FRIDAY WE HAVE LIVE MUSIC FROM 5:30 - 7:30 PM

COME JOIN THE FUN, LISTEN TO SOME GREAT MUSIC AND ENJOY SPIRITS WITH A WESTERN FLAVOR!!

SUNDAYS FROM 2 - 4 PM
WE HAVE A BLOODY MARY BAR WITH LIVE MUSIC

FRIDAY JULY 31ST: ENNIS CITY RAMBLERS
SUNDAY AUG 2ND: STEVE INGRAM
FRIDAY AUG 7TH: BRIAN STUMPF
SUNDAY AUG 9TH: QUENBY
ASK ABOUT OUR WEEKLY BOTTLING PARTIES!!

MADISON THEATRE 682-4023
115 Main St., Ennis, MT

Friday, July 31 - Sunday, August 2

TERMINATOR GENISYS (PG 13)
Friday & Saturday 7:15 pm Matinee Sunday 4:00 pm

Coming Soon -
MINIONS (PG), ANT-MAN (PG-13)

Evenings: Adults \$8 • Children (12 & under) \$6 Show time at 7:15 pm, Box Office opens at 6:30 pm

Find us on at Madisontheatreennis www.ennismovies.com