

The Madisonian.

THE LOCAL NEWS OF THE MADISON VALLEY, RUBY VALLEY AND SURROUNDING AREAS

Montana's Oldest Publishing Weekly Newspaper. Established 1873

75¢ | Volume 141, Issue 34

www.madisoniannews.com

Thursday, June 20, 2013

A HOME FOR WILD HORSES



Photo by Alyse Backus

All 710 horses at the Spanish Q Ranch are geldings. About half are around two years old and the other half are older geldings.

Wild horses make Ennis ranch home

By Alyse Backus
THE MADISONIAN
news@madisoniannews.com

Hundreds of horses gallop across a mountain ridge just outside of Ennis, the pounding of their hooves and the distant neighing echoes through the Spanish Q Ranch.

The Spanish Q Ranch, which is owned by Greg and Karen Rice, is home to 710 government-owned wild horses. On June 1, this herd of wild geldings was released from their winter pasture and explored their new 2,500-acre pasture for the first time.

The 2,500 is part of four

different pasture areas on the ranch, which is Montana's first long-term holding facility for wild horses and burros. The total acreage of the holding facility is right around 13,000 acres.

When the horses were first let into the larger pasture, they didn't stray too far from their winter pasture, said Pat Fosse, the assistant field manager for the Bureau of Land Management in Dillon. Now, they are roaming around a little bit more.

"The idea is to get them to adopt a free roaming behavior," said BLM Wild Horse and Burros program spokeswoman, Heather Emmons.

The wild horses that now roam the Spanish Q Ranch have seen their fair share of controversy. When the horses were first shipped to Ennis, four surrounding landowners filed appeals with the Interior Board of Appeals in November.

The landowners expressed concerns that the wild horses may displace the area's elk and there may be a shift in predator behavior in the area that may affect other livestock. When the horses first arrived, the BLM offered to sit down with the appellants and discuss the concerns. One of the four landowners took them up on the offer.

Appeals can take up to a couple years to make their way through the system. Until the Board of Appeals makes a decision, the horses stay at the Spanish Q.

"While the horses are out here, some of the concerns may go away if they don't come to fruition," said Emmons.

"There are certain specifications the Rices had to follow to mitigate wildlife concerns," said Fosse. "The types of fences built needed to prevent wildlife entanglement."

The BLM requires the fences to be at least 48 inches tall and have extra space between wires to prevent wildlife

from getting tangled in it. The wires are also smooth wires. The BLM has then set up vegetation monitoring at different points to make sure areas aren't over grazed.

The Rices have owned the Spanish Q since 1969. As fifth-generation ranchers, the wild horses provided a way to save the ranch.

"We're good stewards of the land," said Karen. "Greg has been at this his whole life and our son has too. We'd never abuse this place. You just can't live on it and abuse it, and we're not about to start now ... I hope to keep this place for our grandchildren, and we felt with a

steady income we can do that."

While the BLM pays \$1.36 per horse, per day, the Rices are responsible for the construction of fences and providing feed during the winter.

"This first few years will be a little rough," said Karen. "I think there has been some misconceptions about that. I wish I could show you my bills."

While there have been appeals, the Rices say many locals support what they are doing and ultimately the Rices love having the horses around.

"This has all the potential in the world," said Greg. "This is a good deal. They are happy here."

County Detention Administrator receives statewide award

By Faith Moldan
FOR THE MADISONIAN

While the fact that Carmin Hill was the recipient of the 2013 Montana Sheriffs and Peace Officers Association's Detention Officer of the Year Award was a secret until Thursday evening in Butte, the fact that she was deserving of the award was not to the Madison County Sheriff's Office.

"She is just a gem to work with," Undersheriff Roger Thompson said of Hill. "Carmin was a fairly easy choice to nominate and very deserving."

Hill, who has been with the sheriff's office for eight years, performs all the duties that her fellow detention staff has to perform such as booking and feeding inmates. She is also tasked with maintaining all the inmate records, training and supervising three other detention officers, as well as providing on-call and work schedules for the detention officers to transport prisoners during the week.

The Madison County Detention Center is a 72-hour facility like several others in Montana.

Turn to CARMIN on pg. 2



Photo by Steve DiGiovanna

County nursing homes look to aid employees with tuition assistance

By Faith Moldan
FOR THE MADISONIAN

Working from a county employee policy, the Madison Valley Manor Administrator and the Board of Madison County Commissioners made a few changes to the tuition assistance policy to make it fit the county's two nursing homes better.

Darcel Cook, the Madison Valley Manor Administrator, said the assistance is not necessarily only to aid employees in their current positions, but also to help them in their efforts to move up and on to a new posi-

tion.


"It could be a CNA taking nursing classes online or earning a degree or certificate in something else," Cook said. "Our hope is that they are going to use that newfound knowledge and stay with us for a few years."

Commissioner Dan Happel echoed Cook's desire to keep well-trained staff on hand. He said the program does not benefit the county if it winds up paying to educate someone so they can go work somewhere else and asked that there be a stipulation that they must stay with the nursing home for a certain time pe-

riod to make it worthwhile. Cook and the commissioners agreed that to get the assistance a person would have to work for six months and clear their probationary period before they are eligible. This information will be added to the county's personnel policy so staff is aware of it and there is not too much need for retroactive assistance.

The acceptance of tuition assistance is based on approval by the person's supervisor and the commissioners as well as being subject to departmental bud-

Turn to MANOR on pg. 2

**RUBY VALLEY NATIONAL BANK**
P.O. Box 417 • Twin Bridges, MT 59754 (406) 684-5678
P.O. Box 587 • Sheridan, MT 59749 (406) 842-5411
Member FDIC



CALLING ALL RUBY VALLEY MONTANA STATE UNIVERSITY ALUMNI!
**3rd Annual RUBY VALLEY ALUMNI GATHERING WAGON WHEEL RESTAURANT TWIN BRIDGES SATURDAY, JUNE 22, 2013 AT 6:00 PM**
\$25.00 per individual please RSVP per person to Chad Johnson at 320-1662 or Carolyn Nelson at 287-3901.

TABLE OF CONTENTS
Local News-----A3
Letters to the Editor/
Opinion/ Obituary -----A4
Comics/Games-----A9
Lifestyle-----B1
Health & Wellness -----B2
Columns-----B9,10
Calendar-----C1&C4
Public Notices/
Classifieds-----C2-C3
Visit us online at
www.madisoniannews.com


Conforming Mortgage Fixed Rates

30 Years - .000% Points

3.990 % Rate 4.128% APR

15 Years - .000% Points

3.125% Rate 3.365% APR

Rates subject to change without notice. APR calculation is based on a \$200,000.00 loan amount with a 1% loan origination fee, \$975.00 underwriting fee, \$295.00 document processing fee, Mers fee \$11.95, \$15.00 flood determination fee, \$4.00 transcript fee, 15 days of prepaid interest and *discount point fee as stated above.

AUTO LOANS

AS LOW AS

4.5% rate
4.879% APR

Rates subject to change without notice. APR calculation based on \$20,000.00 loan amount with a \$149.00 loan fee, 48 payments of \$459.67 on approved credit.



Office: 406.682.4215
Toll Free: 888.622.4215
213 E. Main St
Ennis, MT 59729



WWW.BANKINGONTHEFUTURE.COM

CARMIN from pg. 1

The center is open 24 hours a day on weekends to accommodate inmates that are required to serve their time in 72 hour increments. Other prisoners are transported to Gallatin County when arrests are made during the week.

"It was really humbling," Hill said of being name the state's detention officer of the year. I take a lot of pride in my field and work with some great people.

Thompson and Sheriff Dave Schenk thought Hill's day-to-day work added with her numerous certificates from the National Institute of Corrections and the Na-

tional Sheriff's Association and other work went above and beyond what she is called on to do.

"She built the detention policy for the department," Thompson said. "She did it from scratch. There was not one before she arrived."

Schenk said Hill is involved in a jail standards committee and is known throughout the state for the jail peer reviews she is part of. Hill attended the 74th session of the Correctional/Detention Officer Basis course in October 2005 and was selected by her fellow students for the Rick Day Class Inspiration Award, which she received at graduation.

"The sheriff, undersheriff and deputies are amazing people," Hill said. "For them to feel I was worthy to be nominated for the award is fantastic honor."

Selected for the Montana Sheriffs and Peace Officers Association award by a committee, Hill has a good personality and good communication according to Schenk and Thompson. They said she is a great asset and is well liked at the office with her positive attitude.

"I felt she needed to be recognized for her knowledge of jail standards and her ability to get along with her peers and the inmates," Schenk said.

Thompson added that Hill not only does good work at the Madison County Detention Center, but that she has built up the county's credibility and reputation around the state by jumping into her work on the jail standards committee. She builds trust with the facilities she visits, Thompson said, and is there to offer advice and input to come up with solutions.

"Working in a detention atmosphere can be considered very negative on a regular basis," Schenk and Thompson said. "Hill is without a doubt an employee of the highest caliber."

MANOR from pg. 1

get limitations. A cap of \$4,000 per degree or certificate is set. Employees must also meet the 30-hour required minimum per pay period.

"The employee has to be serious about it," Commissioner Dave Schulz said.

The assistance would have to be paid back if any infraction or disciplinary action occurs and

the employee would be taken off of assistance program. Still a work in progress, the policy specific to the nursing homes will be reviewed and approved before it takes affect.

"It is just a bonus," Cook said. "It will not completely pay for their schooling, but this is for somebody who is going to do this anyway and is not the reason they are going to do it."

In other business, the commissioners approved a three percent pay increase for eligible county employees and an hourly increase of 25 cents an hour for employees every five years they work for the county. This hourly increase is not to exceed 30 years. Effective July 1, the changes were recommended by the county's Compensation Board after legislative action on

the Public Employees Retirement System this last session and review of other counties actions regarding the matter.

"We want to reward loyalty and hard work," Happel said.

The next meeting of the Board of Madison County Commissioners is Tuesday, June 25, at 9:30 a.m. in the commissioners' conference room.

Ennis Fourth of July Parade t-shirts now available for purchase

From Karen Willett
PRESIDENT, ENNIS CHAMBER OF COMMERCE

There is no better way to commemorate the Fourth of July 2013 Parade than with this year's

t-shirt depicting the theme, "Miners, Merchants and Vigilantes." T-shirts are now available for purchase at the Ennis Chamber office and at Madison Foods. All t-shirts cost \$15 and they range in sizes from youth small to 3XL.

Ennis Chamber of Commerce sponsors this annual event that brings thousands to Ennis for a real taste of small town patriotism and pride.

The t-shirt sales, firework sales and participation from the

Ennis Chamber of Commerce businesses help to make the Fourth of July Parade possible. Some of the proceeds will go to support our education scholarships given to graduating Ennis High School students.

B & E CUSTOM BUILDING & DESIGN

CONVENTIONAL FRAME HOMES
COMMERCIAL
REMODELS & ADDITIONS
HAND-CRAFTED LOG HOMES

all phases of construction
design and consulting

Brad Bullock
581-4117

Office
682-7942

Ken Evans
490-2758



e-mail: bande@3rivers.net | www.bandeconstruction.com

**BATS R Us**

ALPINE ANIMAL DAMAGE CONTROL
Live Trapping & Relocation

Squirrels - Skunks - Birds - Raccoons - Snakes
Bats - Beavers - Coyotes - Opossums - Otters
Odor Remediation - Attics & Crawl Spaces

Bruce Bartow (208) 521-4235

FISHING ON FATHER'S DAY



Wayne Ballard fishes with grandchildren Andrew (3yrs.) and Sarah (6yrs.) at the Ennis Lion Club's annual Father's Day Fishing Derby. The Ballard family is vacationing in the area from Utah.

TIME TO COOL OFF!



Kids and adults enjoyed the sunshine and water in Sheridan on Saturday as the Ruby Valley Swimming Pool opened its doors for the summer. The pool has lessons available as well as other classes like water polo/water skills and aerobics.

Photo by Faith Moldan

OUTPOSTEVENTS.NET
Southwest Montana's EVENTS Calendar

FIND YOUR GOOD TIME!
Fast. Easy. Comprehensive.
Searchable.

EVENTS@MADISONIANNEWS.COM
(406) 682-7755

The Madisionian.

exceeding expectations
SINCE 1978

JDL
CONSTRUCTION CO.

SHERIDAN, MT • 406-842-5112
WWW.JDLCONSTRUCTION.COM

Stratford Homes
system-built homes

Stream Team Power



Above: The Madison Stream Team recently completed their summer training.

Photo courtesy of Sunni Heikes-Knapton

Photo courtesy of Madison Conservation District

Left: Volunteers get hands on at the annual stream team training.

Madison Conservation District completes stream training

By Alyse Backus
THE MADISONIAN
news@madisoniannews.com

The Madison Stream Team completed their 2013 summer training last Thursday.

The Madison Stream Team is a group of volunteers who monitor streams in the Madison Valley area. Two new volunteers joined the 15 existing volunteers.

The first part of the training

consisted of the volunteers doing classroom training, which includes why stream monitoring is important and went over the specific tasks the team would complete.

In the afternoon, the crew

went out to Moore's Creek to complete the actual monitoring tasks including filling samples and taking photos. This is where participants actually got to see equipment and work with it.

Over the course of the summer, the team will be completing 18 monitoring projects on streams throughout the valley. The first project is July 12.

"The training went great," said Sunni Heikes-Knapton, the

Madison Watershed Coordinator. "The volunteers are great and well practiced. Some of them have been there for four years and know just as much about it as I do. We actually had them teach the new volunteers."

Bark Beetles continue to hit southwest Montana hard

By Alyse Backus
THE MADISONIAN
news@madisoniannews.com

Red pine trees are not a rare sight in southwestern Montana as bark beetles continue to destroy entire forests.

The whole west side of the U.S. has seen huge losses of trees to the minuscule beast.

One species of bark beetle, the mountain pine beetle, has taken out 70,000 square miles of trees.

Bark beetles tend to target trees that are stressed and with warming temperatures and expanding droughts, many trees can't fight off the beetles. With droughts expected to intensify and lengthen in the next few years, it doesn't look like there is an end in sight for this beetle epidemic.

As winters become shorter and springs come earlier, bark beetle larva survive the colder weather in higher numbers. To make matters worse, the early

onset of warmer temperatures allows the beetles to fly further each year and affect more trees.

The U.S. Forest Service is researching ways to mitigate the extensive damage to the West's forests. Forest thinning may be one option.

The USFS is also researching the connection of forest fires to bark beetles. Fires weaken trees and beetle-killed trees can be especially susceptible to wildfires.

The beetle outbreaks may also have some positive affects,

says the USFS. Bark beetles assist with forest structure and composition and influence forest productivity. They also play important roles in providing habitat for many wildlife species.

According to the USFS, an effective way to combat beetle outbreaks may be semiochemical methods, which are substances that insects produce and use to communicate and regulate the attack process in a tree. Bark beetles produce pheromones that concentrate insect populations

on a tree in an effort to overcome tree defenses. When a tree is filled with beetles, an anti-aggregation pheromone is released to prevent additional attacks on the tree and reduces competition for resources. Researchers are investigating their effectiveness in managing insect populations and also continue to test insecticides that can be used to prevent trees from being attacked by the bark beetles.

The Beaverhead-Deerlodge National Forest will be sprayed with insecticides over the next

few weeks.

"We'll begin in June with individual tree treatments in those places we know a large majority of Forest visitors and users will be this summer - campgrounds, day-use areas and trailheads," stated Bruce Schuelke, Reforestation Forester. "To be effective, we must spray the green trees before the beetles fly again in mid-summer when they'll bore into and lay their eggs in new-found trees."

Forest Service closes hazardous mine openings

Submitted by Leona Rodreick

The Beaverhead-Deerlodge National Forest (BDNF) possesses a profound mining heritage with one of the most extensive and best-preserved compliments of historic mining in the Northern Rockies Region. Commonly encountered historic mining features such as open adits and/or shafts with unstable structures or debris have been abandoned and inactive for many years and present a public safety hazard. Inventory of the

abandoned mine hazards is an ongoing program on the Forest.

The purpose of the inventory is to identify hazardous mine openings to close and reclaim. As part of this ongoing program to close hazardous openings, the BDNF proposes to close twelve to fifteen mine openings this summer. The closure work this year will be on the Madison, Wise River and Dillon Ranger Districts.

Adequate access routes necessary to perform the closure work exist and the Forest

plans to close the openings by installing either bat-friendly structures, polyurethane foam, or backfilling with nearby materials. The Forest will keep disturbance of the surrounding area to a minimum and preserve the mining setting.

Direct any requests for additional information about the closure of these hazardous mine openings on the Beaverhead-Deerlodge National Forest to Licette Hammer, Forest Physical Scientist, at (406) 683-3911 or lhammer@fs.fed.us.

The Madisonian wins nine awards at state convention

By Alyse Backus
The Madisonian
news@madisoniannews.com

The Madisonian claimed a total of nine awards at the Montana Newspaper Association Convention this past weekend in Missoula.

The Montana Newspaper Association consists of 87 papers from all over Montana and serves as a voice for the state's newspaper industry. Each year, the association presents awards that recognize excellence in a variety of specific categories.

Owners, Erin Leonard and Susanne Hill, and reporter Alyse Backus attended the convention on behalf of The

Madisonian.

Erin Leonard received two first place awards for her ad design. "We work really hard to design professional, effective ads for our customers," said Leonard. "Receiving recognition from a state association confirms that it is paying off."

Niche Publication - 2012 Dining Guide (First Place)

Best Small Space Ad - Ennis Eye Clinic (First Place)

Best Black and White Ad - Ennis Gallery Walk (First Place)

Best Nature Photo - "Fighting Back" (First Place)

Environmental/Natural Resources Reporting - "Fire-

works spark blaze in Bear Trap Canyon" (Second Place)

The Mark Henckel Outdoors Award - "Cross-boundary project succeeds in protecting homes, improving forest health" (Third Place)

Best Outdoors Pages - "Gentleman of the River" (Third Place)

Best Photo Essay - "Barn Dance" (Third Place)

General Excellence - (Third Place)



William J. Simmons (93 yrs.) stands in front of the Ennis landmark fly fisherman sculpture at the west end of town. Simmons and his wife commissioned Bozeman artist Jim Dolan to create the sculpture as a gift to the town in 1993. Simmons posed for the art work.

Irrigators need to keep water off county roads

Dear Editor,

What a beautiful early summer we are having here in Madison County. It's amazing that only a month ago all the professional weather prognosticators were forecasting an unusually dry and hot summer with no rain in sight. We're certainly not completely out of the woods yet (no pun intended) but so far in mid-June we couldn't ask for a

more ideal early summer. The added moisture helps our County Road Crews grade roads without the need for a water truck and allows us to catch up on our normal road maintenance work.

This brings me to the subject of this editorial--irrigators allowing their ditches and pivots to make a muddy mess out of our county roads because they don't feel the need to adjust them to water only in their fields.

As most people know by now, I'm a very strong advocate of private property. That personal advocacy is based on an understanding of the concept of personal responsibility and respect for the rights and property of others. One of the primary responsibilities of County government is to construct and maintain decent roads so that our taxpayers can freely travel from home to town, to their place of employ-

ment, or to transport their crops and livestock to the marketplace. I have made road improvements a high priority in my district and as a result, we have been making huge strides with our roads.

Herein lays the rub; we have spent hard-earned taxpayer dollars to improve our roads and certain folks don't seem to care one iota whether they make a mess out of a road that will take more hard-earned taxpayer's

dollars to repair. County roads are owned by the taxpayers and anyone that thinks they should have the right to waste taxpayer money because of a crappy, self-serving attitude is no friend of Madison County. Respect and personal responsibility runs both ways, and a lack of respect for the rights and property of others should not be tolerated. Therefore, irrigators who are habitual offenders, please be advised that

we will henceforth be enforcing Madison County Ordinance #3-98 with substantial fines until you get the point. Please respect the rights of others and keep your water in the fields, not on our roads.

Dan Happel / Madison Commissioner - District 2

Congratulations

Dear Editor,

Congratulations to our new Booster Club Officers for the 2013-2014 School Year:

President: Jessie Rice
Vice Pres: Kelley Knack
Secretary: Traci Sciuchetti
Treasurer: Ginger Nelson

Cindy, Stacey and I would like to thank these ladies for their willingness to be officers.

We look forward to the next school year!

Jenny Johnerson
Ennis

Thank you for everything

A big thank you to everyone who brought food, sent cards and prayers during my stay in the hospital and recovery at home.

Thanks again,
Gayle Hanson
Twin Bridges

Ennis Rodeo fundraiser a success

Once again, a big "THANK YOU" for all the businesses and individuals who donated and supported the fourth annual Ennis Rodeo Fundraiser. Without the donations and attendance we would not have had another successful fundraiser. With the Fourth of July just around the corner we continually need your support to maintain the rodeo grounds. We hope to see you at the Ennis Rodeo on the third and fourth of July. For tickets or information, call Pat Hamilton at 682-4700 or contact any Ennis Rodeo Board member.

Thank you,
Jan Coffman
Ennis Rodeo Board

Thank you for well wishes

A special thanks to each and everyone who sent cards, well wishes and prayers for my surgery and recovery. It was greatly appreciated.

Aldon and Bev Thielke

We appreciate the outstanding care

The Warburton's want to thank the Madison Valley Manor for such outstanding care of our beloved husband, father, brother, and grandfather, Gene Warburton. Thank you one and all for all you did in this difficult time.

You guys are the best.

Esther Warburton and Family
Ennis

OBITUARIES

Lt. Col. John Paul Reilly June 20, 1938-June 16, 2013

Lt. Col. John Paul Reilly, USMC (Ret), of Stafford, Va. and summer resident of Ennis for the past twenty years passed away on Sunday, June 16. Born on June 20, 1938 in Gallitzin, Penn., to James W. and Catherine J. Reilly, he graduated from California State Teachers

College of California, Penn. in 1960 with a degree in Industrial Arts Education. During his sophomore year at CSTC, he joined the Marine Corps' Platoon Leaders Course program. Following two summers of training at Quantico, Va., and upon graduation from college,

he was commissioned a second lieutenant of Marines and was again ordered to Quantico for further training at the Basic School.

During his 20 years of active duty service, Lt. Col. Reilly served in various command and staff billets, including two tours of duty in Vietnam; Commanding Officer of Marine Barracks, Keflavik, Iceland; Operations Officer of the Third Marine Division, Okinawa, Japan; and Director of the Marine Corps' Communication Officer School at Quantico. His personal decorations include the Legion of Merit and the Navy and Marine Corps Commendation Medal.

Upon Retirement in 1980,

Lt. Col. Reilly was offered a position by Stafford County School System as a Technology Education teacher and spent 14 years teaching Construction Technology and Technical Drawing at the high school level. He retired from teaching in 1994.

John is survived by his wife of 49 years, the former Carol E. Taylor of Goodland, Kan., and four children: Stacey Colebaugh and her husband, Brian, and four daughters of Stafford; Tracey Brown and her husband, Thomas, and two children of Apopka, Fla.; Erin Smith and her husband, Russell, and two daughters of Stafford; and James and his wife, Kazumi, and two children of

Atlanta, Ga. John was preceded in death by the couple's infant son, Kristjan.

A mass of Christian Burial will be celebrated for Lt. Col. Reilly at noon on June 19, at St. William of York Catholic Church, 3130 Jefferson Davis Hwy, Stafford, VA. Father Robert J. DeMartino will be the celebrant. Interment will follow at 1:30 p.m. at Quantico National Cemetery. A reception will follow the interment at St. William of York Catholic Church.

The family will receive friends from 6-8 p.m. on June 18 at Covenant Funeral Service, Stafford with a rosary at 6:30 p.m.

The family requests that in lieu of flowers, donations be

made to The Semper Fi Fund, www.semperfifund.org or the Madison Valley Medical Center of Ennis.

Online guest book at covenantfuneralservice.com.



The Madisonian.

(USPS 325-340)
Montana's Oldest Operating Weekly Newspaper
Published Thursdays at Ennis, Montana for Madison and South Jefferson Counties.

Owners/Publishers:
Matt & Susanne Hill, Chris & Erin Leonard
Advertising & Circulation Manager: Susanne Hill
Production: Erin Leonard
Circulation Manager/Sales Assistant: Sara Racine
News Manager/Reporter: Alyse Backus
Contributors:
Gail Banks, Gerry Mooney, Keith Axberg, Art Kehler, Faith Moldan

ENNIS, MONTANA

- Madisonian Editorial Policy -

Editorials are intended to acquaint our readers with the Editor's viewpoints on matters of public importance. Guest editorials and letters from readers (Letters to the Editor) reflect the opinion of the writers and do not necessarily reflect the opinion of the Editor or the staff of *The Madisonian*.

- Letters to the Editor/Readers Speak Policy -

The Madisonian encourages the opinions of readers on public issues and matters of local concern. Letters must be close to 350 words. Please include the writer's name, address and phone number. *The Madisonian* reserves the right to edit content for grammar, good taste and libel. We also reserve the right to reject or delay publications.

- Display & Classified Advertising Policy -

The Madisonian accepts most advertising. It is up to us to decide on placement and content acceptability. The advertisements in this publication are not necessarily the opinion of or supported by *The Madisonian*.

Please note: Our client information is confidential.

~ Subscription Rates ~

In-State - \$35.00/1 year or \$60.00/2 years • Out-of-State - \$45.00/1 year or 75.00/2 years (e-Edition complimentary with print subscription) • \$30 - e-Edition only • \$40 - 6 mos. print/1 year e-Edition

Postmaster: Please, Send Address Changes to:

The Madisonian, P.O. Box 365, Ennis, MT 59729
Phone 406-682-7755
Toll Free 1-888-238-7849
email: editor@madisoniannews.com
Hours of Operation:
Monday - Friday ~ 9-Noon & 1-5 - Unless Notified Otherwise

NEWS & ADVERTISING DEADLINES

5 p.m. - Monday
-After that, only if time and space permit.-

On May 14, this beautiful woman was taken way too soon by a very aggressive ovarian cancer.

Tanya was born in Rexburg, Idaho, on Nov. 12, 1956 to Pete and Arva Christensen. It was the closest hospital to West Yellowstone where they lived. She was raised in Ennis where she attended school and graduated.

Tanya's love of horses started as a young girl and continued throughout her life. She blessed her daughter Melodie with that love and together they raised many. Tanya also had a very soft spot in her heart when it came to animals. There were always a variety of critters at her house, and at one time she was happily known, by many, as the

Tanya Christensen

Nov. 12, 1956-May 14, 2013

"Goat Lady".

When it came to work, Tanya was a woman of many talents. A few of her many jobs were bartender, talc sorter, seismographer, ski instructor, printing press operator, built furniture and jewelry, aircraft ground support, flight attendant, parts clerk, heavy equipment operator, truck driver, mud plant operator, and her most recent and most fulfilling was being a certified nurse's assistant at the Bozeman Lodge in Bozeman.

Friends were always very important to Tanya and she would always give anything she could to anyone of them. Her kind heart always was there to listen and help whenever needed. She has touched so many people in her life.

Tanya leaves behind her sister Suzi Christensen, her darling daughter and best friend Melodie Johnson, an amazing son-in-law Jake Johnson, two precious grandchildren Lyric and Alee, the man who held her heart Bob Hokanson, her four-legged boys Rikki and Rouger and the many people who were her extended family and special friends.

Cremation has taken place and Tanya requested a party in-

stead of a funeral. A party to celebrate her life will be held on June 29, 2013. A memorial fund has been started to support ovarian cancer research and a tree grove to honor Tanya's love for gardening. Please contact Suzi at 406-581-7173 for time and location of the party.

A loving thank you goes out to all of you who have sent flowers, cards, food, donations, your love and support to our family during this difficult time. A special thank you to the Bozeman lodge staff and residents. With grateful appreciation, thank you, Suzi Christensen and Melodie Johnson and family.



In Memoriam

William Nicholls, age 93, died October 26, 2012. Graveside memorial services with military honors will be held Saturday, June 22, at 11 a.m. from the Twin Bridges Cemetery.

JOIN US IN THE CELEBRATION OF JOHN AND SHARRON GECHO'S 50TH WEDDING ANNIVERSARY AT THE FUN AND FAMOUS

BLUE MOON SALOON CAMERON, MT SATURDAY, JUNE 29 1 PM TO 5 PM

A BUFFET LUNCH WILL BE SERVED LIVE MUSIC WITH "JERRY" NO GIFTS, PLEASE.

HOPE TO SEE YOU THERE!

MADISON VALLEY HEATING & COOLING

JOE VELAND
406.682.3999

SERVICE WORK
NEW CONSTRUCTION
REMODELS

PO BOX 987
ENNIS, MT 59729

Harrison High School 4th quarter honor roll

Submitted by Harrison Schools	Kristen White*	Megan Skillman	Doug Christensen
High School "A" Honor Roll	Becca White*	Levi Strickland	Derik DeFrance
	Tori Wilson*	Jon Strong	Josie Hokanson
		Steven Strong	
John Brennan	High School "B" Honor Roll	Jake Traucht	
Chas Buus		Taylor Twofeathers	JrHigh "B" Honor Roll
Britt Cooper*	Kyra Andrews	Tyler VonBergen	Jessica Hays
Taya DeFrance*	Hailey Hokanson	Zane VonBergen	Zach Jackson
Delaney Galloup	Dylan Lehman	Jessica Ypma	Andrew Nye
Alecia Panagakis	Matthew Mainwaring	JrHigh "A" Honor Roll	
Sierra Panagakis	Kolton Moe	Alexys Bacon	
Garrett Petersen	Josh Nye	Lane Buus	*denotes 4.0



Prudential
Montana Real Estate

PATRIC D. GRAHAM
Real Estate Agent, GRI
406.600.5191
patricgraham1@gmail.com

Call me for a listing appointment!

An independently owned and operated broker member of BREC Affiliates, Inc. Prudential, the Prudential logo and Rock symbol are service marks of Prudential Financial, Inc. and its related entities, registered in many jurisdictions worldwide.

ENNISMONTANAPROPERTIES.COM

Twin Bridges Veterans activities

Submitted by Al Fox

Ruby Valley Food Bank. Please be aware and contribute as you can to this worthwhile local benefit.

Friday morning, June 14, we held a brief flag raising ceremony at the Twin Bridges Park adjacent to the Fire Hall. We hope to have several of these events during the year, including at our school and at the Fair grounds.

Our meeting adjourned with the 50/50 drawing with Clarence Gribben's name being drawn. Since Clarence was not present, the pot will continue to grow until the drawing following our next scheduled meeting - July 11, 7 p.m. at the Montana Room of the Twin Bridges School.

We have collected and turned in 46 old cell phones for recycling and therefore 46 hours of phone time for our overseas service men and women. We want to thank all those who have donated their old phones. Our collection box remains open at the Main Street Market in Twin Bridges.

The kids Fishing Derby is set for June 29, 10-2 p.m., at Lori's Pond. There will be prizes followed by a potluck picnic lunch. American Legion Post 31 will provide burgers, dogs and soft drinks.

We will have collection "cans" at all local area functions to collect money for the

WELLS FARGO STEAK HOUSE
fine frontier dining

Friday, June 21
9:30 pm

DIRTY SHAME

Tickets at the door

314 W. WALLACE | VIRGINIA CITY, MT
406-843-5556

Largest Bar & Dance Floor in the Area!

COME PLAY POOL! **BEST PRICES AROUND!**

BLUE MOON SALOON
Cameron, Montana
Saloon | Restaurant | Lodging

MONDAY
Free Pool • Bucket of Beer and 12 wings \$15.00

TUESDAY
6-9 pm: \$2.00 Bar Brands & Stuffed Burger Special

WEDNESDAY
Mexican Specials • Margaritas \$3.00

THURSDAY
FREE Dogs on the Deck & \$1.00 draft

FRIDAY
Prime Rib

SATURDAY
Frozen Drinks • Carolina Shots 2 for 1

3793 US Hwy 287 N | Cameron, MT | 682-4555

FYI - There will not be an insert for Madison Foods for the next three weeks. We apologize for the inconvenience. Please be sure to stop by and check out the deals!

Thanks for understanding,



Madison Valley Plumbing & Heating

Serving Madison County for over 25 years

- New Construction
- Service Work
- Winterization
- Drain Cleaning
- Remodels

Jerry Singleton
Master Plumber #811
Phone: 406-682-7913
Cell: 581-3025

P.O. Box 1115 • mvp@3rivers.net • Ennis, MT 59729



SOUTHMONT FORM & FINISH
FULL SERVICE CONCRETE CONTRACTOR

- Pump Truck Service • Ground Heater Rental
- Footings, Walls, Slabs • 60' Boom Truck Rental
- Commercial & Residential Concrete
- Sprayed Foundation Coating & Waterproofing
- Decorative/Custom Concrete/Stamped & Overlay

FREE ESTIMATES - Licensed & Insured

Serving All of Southwestern Montana

Mick & Suzanne Hubner - Bob Hubner
Mob.: 406-925-1864 ~ Phone: 406-682-7253 ~ Fax: 406-682-5425
e-mail: hubner@3rivers.net - Ennis, Montana

Ruby Weed Day
Saturday
June 29 2013
8:00 A.M.

Meet 1/2 mile South of Ruby Dam
Please bring any spray equipment you have, your spades, shovels and gloves.
Hope to see you there!!!

 PLEASE BRING A LIGHT LUNCH AS THERE WILL BE A BBQ SERVED AFTER THE WORK DAY @ THE WEED BOARD SHOP

Remember to bring plenty of water to drink.

A special thanks to:
Montana Fish, Wildlife & Parks
Ruby Water Users Assoc.
&
The BLM



8th Annual

Welcome to the Neighborhood PARTY

FRIDAY JUNE 28TH, 2013 • 5:30 PM SOCIAL • 6:00 PM DINNER
7:00 PM PRESENTATION

Terry McEaney, Ornithologist Emeritas, Yellowstone National Park

Jeffers Building at the Madison County Fairgrounds

A free event where you can join your neighbors and celebrate your shared values and resources! Dinner will include locally raised bison, beef and potatoes from within the Ruby Valley Conservation District.

Sandhill Cranes
Our notable, noisy neighbors

This event is free for Ruby Valley Residents!
(Donations appreciated) Hosted by the Ruby Watershed Council and Ruby Valley Conservation District with Help of Sponsors: Madison County, Wildlife Conservation Society, Giem Angus, Sandru Ranch, Snowcrest Ranch, Martin Brothers Farms and The Madisonian.

Get to know your Neighbors

To RSVP, or for more information
Call Rebecca at 842-5741, ext. 106 or email rubywatershed@gmail.com

Something to remember....

The Madisonian has changed its ad copy /order and submitted news/letters deadline to Fridays at 5 p.m. to ensure quality and ample time for proofing. This change has taken effect as of June 7.

Thank you! The Madisonian Staff



WE'RE ON THE WEB!

WWW.MADISONIANNEWS.COM

CHECK US OUT!



P.O. Box 56
SHERIDAN, MT 59749

(P) 406.842.5865
(F) 406.842.7373

www.kenworthyelectric.com

kenelec2@3rivers.net

MEMBER OF MONTANA RENEWABLE ENERGY ASSOCIATION



MADISON COUNTY'S PREMIER SOLAR INSTALLER

Newly elected President of the "Greater Montana Chapter of Independent Electrical Contractors"
Supporting all of Southwestern Montana's Energy Needs for over 25 years.

ELECTRICAL

Full-service Electrical Contractor
New Construction, Remodels, and Service
Residential, Commercial & Industrial
Bucket Truck for Overhead Work
Trencher & Mini Excavator for
Underground Work
Service and Panel Upgrades



Lighting by:



LOW VOLTAGE

Offerings

Wired and Wireless Solutions for: Telephone, TV, Data, Video and Audio

Whole house or Business Audio Systems by:



Monitor your home, business or cabin without a monthly fee with a system by:



Numerous wired and wireless control systems by:



High quality weather Stations by Davis Wireless Vantage Pro2



Now offering Long Range Cordless Phones and Wireless Data Bridges by:

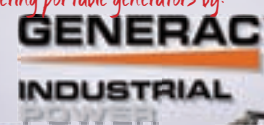


GENERATORS

Generator Stand-by Systems for Residential or Commercial Applications



Also offering portable generators by:



Madison County's Only Authorized **Onan** Dealer

SOLAR

Water Pumping
Instant Rebates from Northwestern Energy
Authorized Northwestern Energy Solar PV Installer
Grid Tie
Off Grid
Consult, Design, Sales and Installation
Custom-built Modular Power Systems



Don't forget to come see us at the "Montana Renewable Energy Fair" in Butte on July 20, 2013. Link <http://www.montanarenewables.org/fair.php>



Residential Listings



306 E Idaho Street | Virginia City
3,572 +/- sf, 5 bd, 2 ba, .43 +/- acre on 4 lots
Run this established business in this 1884 Victorian
Or make it a main residence, 1 detached garage
\$445,000 | #178508 | Melinda Merrill



176 Judy Lane | Alder
1,680 +/- sf, 3 bd, 2 ba, 22 +/- acres horse complex
Large shop/barn w/ insulated & heated tack room
Shared water rights, covered porch with mtn views
\$369,000 | #190588 | Melinda Merrill



304 N Broadway Street | Virginia City
3,200 +/- sf, 3 bd, 3.5 bath on 3 lots, early 1900's
charm, complete renovation & attention to detail
Outdoor fireplace on covered deck overlooking town
\$324,000 | #188629 | Annie Jorgensen



325 E Wallace Street | Virginia City
2 homes, multiple outbuildings, creek 1.46 +/- acre
Own a commercial block in dwtwn Virginia City
Rentable apts, shop, art studio, community garden
\$800,000 | #189253 | Melinda Merrill



102 S Sanders Street | Virginia City
2,453 +/- sf, 3 bd, 3 ba, .43 +/- acre
Rustic custom home, perfect for 1 or 2 families
This house is a must see and agent owned
\$299,000 | #181496 | Holly Driskill



1011 Douglas Street | Virginia City
3,736 +/- sf 5 bd, 3 ba, overlooking Virginia City
Room for 1 or 2 families on .43 +/- acre
Finished basement, 2 car garage, horses allowed
\$279,000 | #189525 | Holly Driskill



322 E Warren Street | Virginia City
2,500 +/- sf, 2 bd, 1 ba, 1.17 +/- acre, extensive
remodel in '99 w/ sunroom & covered wrap around
deck, guest cabin, fenced and "critter" ready
\$259,000 | #188679 | Annie Jorgensen



200 W Wallace Street | Virginia City
Price reduced and a great opportunity in the heart
of historic Virginia City, 3 parcels can be sold
separately (prices vary) or altogether for
\$390,000 | #186057 | Annie Jorgensen



37 Cornucopia Rd | Virginia City
2,016 +/- sf, 2 bd, 2 ba, new construction
Recreational opportunities yet close to town
21.15 +/- acre with plenty of privacy & trees
\$240,000 | #187089 | Annie Jorgensen



1221 E Harrison Street | Virginia City
1,390 +/- sf, 2 bd, 2 ba charming log cabin on creek
Rustic, circular cut wood floors, perfect get-a-way
Mins. from Virginia City, & 14 miles from Ennis
\$198,000 | #188070 | Rikki Dilschneider



312 E Idaho Street | Virginia City
872 +/- sf, 1 bd, 2 ba, built in 1864 w/ great start to total
Renovation, new windows, plumbing, wiring
Appliances & more, close to historic Virginia City
\$94,700 | #187621 | Annie Jorgensen



Creighton Block Building | Virginia City
3,500 +/- sf, restored stone, Owner Financing/OAC
Located in 124 & 126 Wallace, Main St. location
Bank Owned, 2 units available individually
\$265,000 | #190421 | Annie Jorgensen



104 W Warren | Virginia City
1,950 +/- sf, 3 bd, 2 ba, on 3 lots, built in 1895,
Updated Victorian, incredible views of Alder Gulch
Ruby Valley & surrounding mountain ranges
\$178,000 | #182661 | Annie Jorgensen



111 E Idaho Street | Virginia City
983 +/- sf, 2 bd, 1 ba, historic character
Cozy window seat, propane stove, storage shed
Close to downtown, landscaped lawn
\$149,000 | #188444 | Holly Driskill



502 E Harrison Street | Virginia City
3,000 +/- sf, 3 bd, 3 ba, .32 +/- acre, unobstructed views
Close to BLM/USFS, Interior stud walls,
Water/sewer hook-up is buyers responsibility
\$89,000 | #188733 | Annie Jorgensen



Stagecoach Business | Virginia City
Business, w/ Stagecoach & State leased grounds
\$69,000, Business, w/ Stagecoach, a team of horses
Six saddle horses, and all tack to outfit
\$89,000 | #190361 | Melinda Merrill

Land

TBD Douglas Street | Virginia City
Top of the world views overlooking Virginia City
.6 +/- acre with a great build site
Power, phone & water located near property
\$47,000 | #161732 | Annie Jorgensen

TBD Hughes Street | Virginia City
Property consists of 12 lots w/ great building sites
Utilities are buyers responsibility, but close by
1.3 +/- acre, gentle sloping terrain, close to BLM
\$88,000 | #185680 | Annie Jorgensen

TBD Cornucopia Road | Virginia City
20 + acre parcel, top of the world views
Building sites with vistas of the Ruby Valley
Mountain range views and privacy in the trees
\$89,900 | #180704 | Annie Jorgensen

5 Water Gulch Tracts | Virginia City
5 34-98 +/- acre tracts, tons of privacy, views
Spring creek, easy access, N. side of Hwy 287
Livestock water rights, wildlife \$159,000-299,000
#181948, 181950, 181952-54 | Melinda Merrill

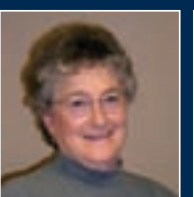
ENNIS



SARA JOHNSON
MANAGING BROKER
570.4249



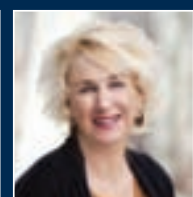
MELINDA MERRILL
BROKER
596.4288



RUTH STICKROD
SALES ASSOCIATE
682.3177



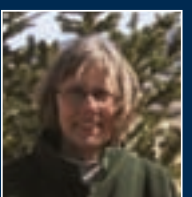
TAMMY WHAM
SALES ASSOCIATE
490.8280



HOLLY DRISKILL
SALES ASSOCIATE
451.3527



JAN MURPHY
BROKER, GRI
539.4200

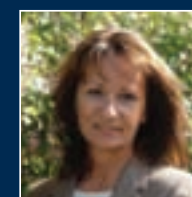


JILL GAAR
SALES ASSOCIATE
580.5636



JOSH VUJOVICH
SALES ASSOCIATE
570.9536

SHERIDAN



KAY CARTER-COLWELL
BROKER, ABR, CRS, GRI
596.1077



ANNIE JORGENSEN
SALES ASSOCIATE
570.5663

TWIN BRIDGES



JUDY HERRICK
BROKER
581.1886



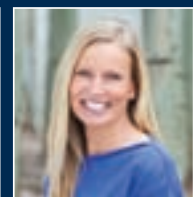
KATHY WOOTEN
SALES ASSOCIATE
731.676.2463



LINCOLN ROBERTS
SALES ASSOCIATE
581.6283



PATRIC GRAHAM
SALES ASSOCIATE
600.5191



RIKKI DILSCHNEIDER
BROKER
581-5155



SHYLEA WINGARD
SALES ASSOCIATE
581.5254



TANYA MATSON
SALES ASSOCIATE
580.6987



TIM BEARDSLEY
SALES ASSOCIATE
581.7056



MICHELLE VAN DYKE
BROKER, ALC, GRI, SRS
596.0805



RAND BRADLEY
SALES ASSOCIATE
596.2286



FRANK COLWELL
MANAGING BROKER
596.1076



Prudential

Montana Real Estate

ENNIS: 123 E Main St | Ennis, Montana 59729 | 406.682.5002
SHERIDAN: 118 S Main St | Sheridan, Montana 59749 | 406.842.5650
TWIN BRIDGES: 106 N Main St | Twin Bridges, Montana 59754 | 406.684.5686

PRUMT.COM

An independently owned and operated broker member of BRER Affiliates, Inc. Prudential, the Prudential logo and Rock symbol are service marks of Prudential Financial, Inc. and its related entities, registered in many jurisdictions worldwide. Used under license with no other affiliation of Prudential. Equal Housing Opportunity. All information contained herein is derived from sources deemed reliable; however, is not guaranteed by Prudential Montana Real Estate, Managing Broker, Agents or Sellers. Offering is subject to error, omissions, prior sales, price change or withdrawal without notice and approval of purchase by Seller. We urge independent verification of each and every item submitted, to the satisfaction of any prospective purchaser.



R&M Rentals Inc.
Ron or Martha Noack
4995 US Hwy 287 N. ~ Ennis, MT 59729

Daily & Weekly Rentals
Insurance Rentals
Economy & Midsize cars, SUV's
Free Local Pickup
Major Credit Cards Accepted
Email: xpressrenta_car@yahoo.com
Reservations Appreciated

Monday-Friday, 9-5pm • Saturday 9-12 pm
(closed for lunch 1-2 pm)

406.682.7039
After Hours Call 406.570.8133

FOX ALARM AND TECHNOLOGY

Fox Alarm and Technology, LLC is a family owned company, based in Ennis, Montana.

Fire Alarms, Security Systems, Low Temperature Notification, Carbon Monoxide alarms, Broken water pipe alarms and Observation Systems.

Simply Safe.
Protecting your family since 1996.



(800) 932-4050 | info.foxalarm@gmail.com | fax (406) 682-5060
www.foxalarmandtechnology.com

FUN & FOOD

ENTERTAINMENT FOR THE WHOLE FAMILY

- ★ 6 LANES OF BOWLING
- ★ POOL TABLES
- ★ VIDEO GAMES
- ★ FOOD, BEER & WINE

OPEN 6 DAYS A WEEK
TUESDAY - SUNDAY

406-682-7406 ★ 59 MT HWY 287 ★ ENNIS, MT



Savage Roofing

Roofing Year Round!
37 Years Experience

FREE Estimates
Call 641-0059 or 682-7523



4th of JULY
Fireworks at dusk!
The best fireworks in Madison County!

VIRGINIA CITY MONTANA

This firework display is made possible only with your donation.

Donations welcomed & appreciated!

Please send to
VC Fireworks %VC Chamber
PO Box 218, Virginia City, MT 59755

800.829.2969 www.virginiacity.com

Because of homeland securities, firework shows are being restricted & therefore, are more expensive. We appreciate any & all donations.




MADISON RIVER FOUNDATION DONATION

Submitted by Bill Mercer

On behalf of the Madison River Foundation, Richard Lessner, executive director, of the Madison River Foundation accepts a contribution of over \$900 from Bill Mercer, Real Estate Broker of Clearwater Montana Properties. Each year Bill takes a percentage commissions and donates to organizations in the Ennis community. Other organizations that received a contribution were the Ennis Boys Scouts, Ennis Lions Club and the Madison Valley Hospital Foundation.

Brothel Days in Virginia City

Submitted by Rebecca Ramsey
VC AREA CHAMBER OF COMMERCE

One Montana miner said: "Many's the miner who'd never wash his face or comb his hair, if it wasn't for thinkin' of the sportin' girls he might meet in the saloon."

The Bale of Hay Saloon in Virginia City will present a tribute to these workingwomen, both Prostitutes and Hurdy-Gurdy Girls on June 29 and 30.

The internationally famous organ player, Dave Calendine will be playing historic piano during the day starting at noon both Saturday and Sunday. Dave played the Cremona at the Opera House theatre for two seasons.

Saturday and Sunday at 1 p.m. Ellen Baumber will present a lecture on the subject of brothels in Montana complete with information on the architecture of

the brothel. Bed races will commence at 4 p.m. on Saturday, each team must have a person dressed in "proper attire" on the bed and race up the street against another team. Get your five person teams together and join the fun, prizes for best team name and fastest bed! Don't worry about bringing your own bed, we supply the beds!

Lace up your corsets and put on your finest for the costume party at 9 p.m. on Saturday. We are doing a benefit dance for the 150th celebrations, in honor of the hurdy-gurdy houses and hurdy-gurdy girls or hurdis as they were known. Hurdy-gurdy houses, as described by Seagraves, "had a bar on one side and dance floor on the other as well as a hallway with several small rooms in the rear. These rooms were rented to the customers who wanted more than a dance, and to the hurdy-

gurdy girls who chose to entertain a man after, or during working hours. Not all of these girls were prostitutes; most earned a good salary from dancing and serving drinks." The dancing itself was free, but the customer was required to pay a dollar for a drink for himself and his partner after each dance.

For this event, you will have to pay the madam and get your token for a dance with the hurdy-gurdy girl of your choice! Buying a drink for yourself and your partner is optional and there will be prizes for best-dressed participants. Contact the Bale if you want to volunteer to be a hurdy-gurdy girl.

The Krista Barnett Band will be playing and word on the street is they will be in 1863 period attire. When Krista won a young composer's contest in her hometown of Akron, Ohio at the age of

five, she knew she was destined for a life in music and performing. She got a voice degree at Indiana University and now sings a variety of genres from classical music to hip-hop. Currently she sings with The String Jumpers, Pinky & the Floyd, The Tyler James Brigade, Lester Rocks, and The Dave Walker Band in addition to singing jazz with her own quartet. Krista can also be heard singing on several of the "Get Lost" (in Montana) commercials. Come hear the Krista Barnett Band on June 29 at the Bale of Hay in Virginia City! Joining Krista will be legendary guitar player, Craig Hall, and the young and talented fiddler, James Schlender. Expect new arrangements of old standards with Montana flair.

Call the Bale of Hay Saloon at 406-843-5700 or check out our website for more information www.baleofhaysaloon.com.

COLD COUNTRY
Performance Horses

406-945-3695
406-577-6824

TRAINING BOARDING LESSONS SHOWING SALES



Flager Landscaping

Since 1993
Dick & Ben Flager
Alder, MT

Residential Commercial
Licensed & Insured

Trees, Irrigation, Shrubs, Edging, Walkways Border
Design & Free Estimates

We will come back!
WE DO QUALITY WORK WITH QUALITY PRODUCTS.

Office 842-5330 - Fax 842-7282



WWW.TARGHEECONSTRUCTION.COM

Specializing in the Upper Madison Valley and Reynolds Pass

Architectural planning & engineering services available

Log, frame & timber structures Commercial

Remodels & Additions

We service and maintain our projects

Licensed Builder in Montana and Idaho



406-640-1168 | 208-558-9798
heronpicnic@wyellowstone.com

BILL MERCER
Southwest Montana's hardest working Realtor®
406-581-5574 • wwmercerc@gmail.com
130 E. Main St. Ennis, MT

An American-Owned Real Estate Company





Golf Course Home - Ennis • \$210,000
3 bd, 2 ba, 1366 +/- sf • 549 +/- acres, #2 tee • Madison Range views
• low maintenance, lilacs • open plan, 2 car attached garage



Passamari "In Town" - Ennis • \$239,000
4 bd, 2 ba, 2518 +/- sf • perfect family home
• Madison Range views • open floor plan, priced to sell
• fireplace, wetbar, hot tub



Rodeo Dr "In Town" - Ennis • \$269,000
3 bd, 3 ba, 2680 +/- sf • immaculate, move right in
• walk to everything • Madison Range views • open floor plan, huge rooms
• hunting, fishing nearby



Sheep Creek Rd - Cameron • \$365,000
2bd, 3ba 1728 +/- sf log cabin • 19.04 +/- acres
• panoramic views Montana rustic • hi end remodel and appliances
• fireplace, wrap around deck



Hilltop Trail - Ennis • \$429,000
12.77 +/- acres • 4 bd, 5 ba, 2,414 +/- sf • custom home huge mountain views
• open plan, river rock fireplace • 3 car garage 24x24 heated shop
• shed, hot tub, hi end upgrades



Elk Hills - McAllister • \$649,000
3 bd, 3ba, 2042 +/- sf • 19.28 acres, Lindal Cedar
• huge windows 2 car att. garage • 2 car det. garage/shop
• mountain, lake & valley views



Majestic Log Home/Lodge - Ennis • \$795,000
49 +/- acres, close to town • 3 ben 4 ba 3992 +/- sf, mountain views
• perfect for horses, full access • barn, stalls, foaling pen
• trees, pond, NO COVENANTS • dry cabin, motivated seller



- VACANT LAND & COMMERCIAL -

Valley Garden Golf Village - \$79,900 - \$118,000
Virginia City Ranches - 5-6 +/- ac \$45,000 - \$89,000
Shining Mountains - 5-59 +/- ac \$29,900 - \$225,000
Sportsman's Paradise • Cameron 20 - 39.96 +/- acres \$95,000-\$189,000

Pronghorn Meadows - Ennis 1.8-7.2 +/- acres \$53,500 - \$170,000
Madison River Ranches 20 +/- acres \$78,500-\$189,000
TBD Tuke Lane Sheridan 2 20 +/- Acre parcels \$150,000 each
Madison River Ranches 20 +/- acres \$71,000-\$189,000

COMICS & PUZZLES

Brought to you by

**www.pitstop
pizza
andgrill.com**

HOURS: MON - SAT 11 AM - 9 PM.

FOLLOW US ON TO SEE OUR DAILY PIZZA SLICE & PANINI SPECIALS

**MILKSHAKES
PIZZA ■ BURGERS
SANDWICHES & MORE**

682-4979 ■ ENNIS

BIZARRO

Facebook.com/BizarroComics

MARVIN

DO YOU AT LEAST DO BACKGROUND CHECKS ON THESE STRANGERS BEFORE YOU LET THEM STAY IN MY HOUSE?

THE ONLY CHECK I CARE ABOUT IS THE ONE THEY PAY ME WITH

HEY! MOVE OUT OF THE WAY! YOU'RE BLOCKING MY SUN!

RHYMES

PULP FICTION

That got the phloem flowing.

THE VINES HELD DOWN HER BRANCHES WHILE THE WIND GENTLY EXPLORED HER CANOPY. OH, HOW THE ASPEN QUAKED!

FIFTY SHADES OF SHADE

CRYPTOQUIP

T L G Y X W V G Y B P T L G V P
X P R G P H X L V V L Y R N A F V V N P V
X P Y T B S L F Y T W P D P A F

Today's Cryptoquip Clue: V = T

Just a Pinch

Sharing Hometown Recipes, Cooking Tips and Coupons
By Janet Tarpe

Kick Off Summer with Cobb Potato Salad

"Every friend and family member begs me to make this!"

Want to switch up the traditional salad at your next barbecue but not sure what to make? Home cook Linda Bonwill's Cobb Potato Salad recipe should be your go to salad! This recipe combines two great salad favorites to make one amazing dish. With a delicious dressing that ties the flavors together, this will become a summer favorite for family and friends.

See step-by-step photos of Linda's recipe plus thousands more from home cooks nationwide at: www.justapinch.com/cobb

You'll also find a meal planner, coupons and chances to win! Enjoy and remember, use "just a pinch"....

Linda Bonwill
Englewood, FL (pop. 288,219)

Cobb Potato Salad - Janet

What You Need

- 3 lb red potatoes, cubed, cooked and drained
- 1/4 c red onion, diced salt and pepper, to taste
- 2 c mayo
- 1/3 c sugar
- 3 tsp cider vinegar salt and pepper, to taste
- 1 c tomatoes
- 1 c bacon, fried and diced
- 1 c turkey breast or chicken breast, cooked and cubed
- 1 c hard boiled egg, peeled and diced
- 1 c avocado, cubed
- 1/2 c blue cheese, crumbles
- 2 tbsp scallions, diced (for garnish)

Directions

- In large pot of water cook potatoes until soft, not mushy, drain. Add to large mixing bowl.
- In separate bowl, mix mayo, sugar, vinegar and season with salt and pepper, to taste. Add to potatoes, toss.
- Gently add salad to new bowl for cleaner presentation. Chill while preparing toppings. Note: I like adding about 1/4 cup fresh chopped parsley to mayonnaise mixture.
- Prepare topping ingredients. Remove salad from fridge and layer toppings in order of ingredient list (or to your preference).
- Chill for at least 4 hours before serving.

Notes: Make sure not to overcook potatoes. Potatoes should be soft but not mushy to point of falling apart. Salad can be made day before, adding toppings next day. Stir well before adding toppings.

Submitted by: Linda Bonwill, Englewood, FL (pop. 288,219) www.justapinch.com/cobb

Brought to you by American Hometown Media

CROSSWORD By Eugene Sheffer

1	2	3	4	5	6	7	8	9	10	11
12				13					14	
15			16						17	
18							19	20		
		21			22	23				
24	25	26		27			28		29	30
31				32				33		
34		35		36			37			
	38		39				40			
41	42					43		44	45	46
47				48	49	50				
51				52				53		
54				55				56		

ACROSS

1	Waller or Domino	36	Where — at
1	Coagulate	37	Crucial time
5	Chooses	38	Fate
9	Evil	40	Circle ratio
12	Staffer	41	Alamo
13	Father of Japheth	43	combatant
14	Time of your life?	43	More
15	Battle zone, often	47	considerate
17	Member of a pride	48	—Locka, Fla.
18	Unsophisticated	48	Half a golf course
19	Creates	51	Prohibit
21	Yon bloke	52	Green land
22	Use	53	Sportscaster
24	Cage	54	Andrews
		55	On in years
		56	Judicial garment
27	components		Start over
28	Cattle call		
31	Glasgow gal		
	Retirement plan acronym		
	Museum fill		
	Agt.		
	Quarter-bushel		

DOWN

1	Eatery	37	-shek
2	Old Italian money	37	Main meal
3	Smell	39	Allude (to)
4	Cents to dimes, or dimes to dollars	40	Orchestra's location
5	Sans siblings	41	Newsom of baseball lore
6	Luau bowlful	42	October
7	Author Amy	42	birthstone
8	Sometime Stooge	43	Dandling site
9	BBQ site, often	44	Tragic
10	Chills and fever	45	Oklahoma city
11	Society newcomers	46	Former attorney general
16	Definite article	49	Carnival city
20	Completely	50	Sphere
22	Heart line?		
23	Cookware		
24	Rend		
25	Anger		
26	Contrarily		
27	Cripple		
29	Vast expanse		
30	Bond, for one		
35	Chiang —		

All puzzle answers on B10

MADISON VALLEY

Caring & Sharing Food Bank

Weekly Hours:
Mondays ~ Noon - 2:00 p.m.
Saturdays ~ 9 - 11 a.m.
Wednesdays ~ 6 - 8 p.m.

115 Chowning Street • 682-7844
(South of Ennis Town Pump)

Joe Smithson

CARPET STEAM CLEANING
UPHOLSTERY CLEANING
SMOKE & WATER RESTORATION

682-7354
Serving the Ennis Area

NOVICH

INSURANCE AGENCY

Twin Bridges • Phone 684-5701

For All Your Insurance Needs

Serving The Ruby Valley For Over 40 Years

dish NETWORK

Mountain View TV & Satellite

Your local satellite TV specialists

Serving Madison County since 1993

RadioShack

6 Sunrise Loop 682-7858 Ennis

BENEDICT BUILDERS LLC

BUILDING CUSTOM HOMES & COMMERCIAL BUILDINGS SINCE 1974

MEETING ALL EXCAVATION NEEDS TOO!

406.843.5330
PO Box 294 VIRGINIA CITY, MT 59755

MADISON

Laundry and Cleaning 682-4933

TUESDAY
DILLON: The Mini (by 8:30 a.m.)
ALDER: Alder Market
SHERIDAN: Serendipity's
TWIN BRIDGES: Mad Hatters

WEDNESDAY
WHITEHALL: Tri-County IGA

THURSDAY
VIRGINIA CITY: Rank's Drug


JOHN'S WORDS OF WISDOM: If you think nobody cares if you're alive, try missing a couple of payments. ~ Earl Wilson

Our Specialized Services include cleaning of clothes, blankets, comforters, pillows & area rugs

HILARIOUS COMEDY CABARET
IN HISTORIC VIRGINIA CITY MT
THE BREWERY FOLLIES



MAY 24 - SEPTEMBER 21, 2013
SHOWTIMES 8PM & 4PM
RESERVATIONS RECOMMENDED
800-829-2969 EXT. 3 TICKETS \$18



SHOP SPACE FOR RENT IN ENNIS
 All sizes available up to 1,200 square feet
 Heated, insulated, large doors, half bath.
 Gary at 581-3531 or Paul at 581-7878

VEHICLES FOR SALE
Cheapest Fords,
Dodge Ram Pickups,
Chryslers, & Jeeps.
Trades Accepted
1-877-GOT-WOLF
1-877-468-9653

The Madisionian.
682-7755
 ads, news, editor@madisioniannews.com



Ruby Valley Hospital Physical Therapy
Occupational & Speech Therapy
Hands on care for all your body needs.

Orthopedic & Sports Injuries
 Total Joint Rehabilitation
 Back & Neck Care
 Sore Stressed Muscles
 Tension Headaches & Chronic Pain

Self Care
 Home Safety
 Adaptive Equipment
 Hand, Wrist - & Elbow Syndromes
 Neurological Rehabilitation

Available Mon.-Fri. at Ruby Valley Hospital
 220 E. Crofoot, Sheridan, MT 59749-9508 **406-842-5081**



GRAHAM DRILLING
 SHERIDAN, MT

Water Well Drilling, Pump Sales
Installation, Service & Repairs

Serving Residential & Commercial Customers
 in Madison County for over 23 years

Quality Service at a Fair Price
 Phone (406) 842-5214 or (406)682-5290
WWW.GRAHAMDRILLING.COM

WE HAVE COMPETITIVE
AUTO RATES!
Call today to get your free rate quote!

Auto • Home • Farm • Business • Health • Life • Worker's Comp • Contractors

Dean A. Derby, CIC, Agent
 21 yrs Experience
 Member, NFU President's Council, National Sales Honor Award
 Ennis: 406-682-4215 | Bozeman: 406-556-0893
 Cell: 406-580-0893 | Fax: 406-556-0896
In Ennis Tuesdays & by Appointment

RICH'S FLOORING

310 Gallatin Farmers Ave., Belgrade
 406-388-7955 or cell 406-209-1168

CARPET ~ TILE ~ LINOLEUM
"For quality you can stand on."

Funk and flamenco until sundown

Submitted by Thomas Mullen

Philipsburg residents will stay up late this solstice listening to funky music, watching flamenco dancers and strolling the streets until sundown.

It's part of the old mining town's annual Solstice Paseo (pah-SAY-oh) and more than two dozen businesses will reopen their doors to provide hospitality to the passersby.

"Last year was twice as

many (people) as the year before," said Diane Young, owner of a local antique store. "The local people largely support this."

The annual ode to the sun, on the longest day of the year, is free and open to everyone.

The local newspaper hired a seven-piece funk band from Seattle (The Gravity Kings) and engaged dancers from Missoula's Flamenco Montana to perform from 7:30 until around

10 p.m.

Businesses serve free refreshments and the entertainment is outdoors, providing strollers with surprises as they happen upon a horn-band or gypsy dancers tucked away into one of the downtown's green areas.

The first day of summer also marks the first day of the season for this tourist-oriented town and the festival was designed

as a way to recognize the families who support the community year-round.

"It gives us all a nice evening to walk around any say hello to our neighbors on the sunniest day of the year," said event organizer Annie Mullen.

The Solstice Paseo is in downtown Philipsburg Friday, June 21, from 7:30 until sundown. There is no charge. For more information call 859-3223.

Twin Bridges student selected to participate in Montana medical summer camp

Submitted by Kailyn Dorhauer

Spencer Stewart of Twin Bridges has been accepted as one of 30 high school students from across the state of Montana who will be attending a healthcare exploration summer camp at Great Falls College-Montana State University and the University of Great Falls. The Great Falls MedStart Summer Camp is a weeklong program held June 23-28. While living in the dorms and being immersed in campus life, the students will job shadow at area healthcare facilities, visit healthcare symposiums, participate in college courses, become

CPR and First Aid certified, and partake in multiple recreational activities! A total of 180 applications were submitted from high school students across the state and only 30 students were selected to attend the Great Falls MedStart Camp. Being accepted to MedStart Summer Camp is a great accomplishment. Other MedStart camps will also take place in Missoula and Bozeman this summer.

Our nation is facing a healthcare workforce shortage, especially among rural and frontier states. To develop the next generation of healthcare providers, Montana AHEC (Area

Health Education Center) offers the MedStart Summer Camp as one way to spark students' interest in pursuing careers in healthcare. Please take the time to recognize Spencer Stewart for his ambition and accomplishments.

For more information about the Great Falls MedStart Summer Camp please contact Kailyn Dorhauer at North Central Montana AHEC kailyn.dorhauer@montana.edu or 406-994-7709.

The North Central Montana Area Health Education Center (AHEC) is a grant-funded program located in Fairfield and is affiliated with MHA, an Association of Montana Healthcare

Providers. The mission of our office is to recruit, train, and retain a health professions workforce committed to rural and underserved populations.

We connect students to healthcare careers, professionals to communities, and communities to better health. We work with students of all ages encouraging them to pursue careers in the high skill, high pay, and high demand healthcare industry. Our program provides students with career exploration resources and opportunities to further their healthcare knowledge.

Montana Noxious Weed Awareness Week

Submitted by Becky Kingston

Weeds are not glamorous. They do not make you cry unless you accidentally spray herbicide in your eyes. They generally don't incite a lot of passion, unless it is frustration at trying to eradicate them from your garden or lawn. They aren't high on the public radar, if only we could somehow tie noxious weeds with WEED, I'm pretty sure awareness would astound us. We at the Montana Weed Control Association are only concerned about Montana's state and county-listed noxious weeds.

June 17-23 has been declared by Governor Bullock to be Montana Noxious Weed Awareness Week.

Noxious weeds should concern every citizen in Montana because they affect wildlife and fisheries, aesthetics, most of our recreational pursuits, and the view sheds of this great state we live in. When allowed to spread, they displace native plants, which in turn causes wildlife to find other habitat; they can cause a lack of oxygen in water for the fish, and if allowed to grow in the vast grain fields of Eastern Montana, they can even impact the price and taste of that Coors Light you had the other night. Noxious weeds cost Montana millions of dollars each year and many of these plants are toxic to livestock.

Montana currently has 32 state-listed noxious weeds and we are at war with these non-

native plants in every county in Montana, albeit western Montana has a much larger problem given population densities where weeds are primarily spread through travel vectors. And we have some new invasives knocking at our doors from all borders. We have managed to eradicate yellow star thistle where it has been found in Montana to date, but this nasty invasive is a relative to knapweed and each flower head contains nearly one-inch spines radiating from the base of each flower. These spines cause chewing disease in horses and cattle and can even puncture car tires.

Another serious invasive is Eurasian watermilfoil, an aquatic plant. In 2007, this invasive was found in Noxon and Cabinet Reservoirs in Lake County. Since that time, it has been found in Fort Peck Reservoir and most recently in the headwaters of the Missouri River near Townsend. This invasive has cost Idaho millions of dollars and once established, this one is nearly impossible to get rid of. Treatment and management options are often quite limited due to the plant's aquatic habitat.

Then of course, most Montanans have heard of spotted knapweed- an invader found in every county in the state. There is leafy spurge, Canadian thistle, houndstongue, and the list goes on for 26 more state-listed invasives. Many counties in Montana also have invasive species listed on their county lists in addition

to the state-listed weeds and these might include such species as baby's breath, common burdock and common mullein. Across the state, over 50 invasive weeds are listed to be managed and treated, and Montana does have the Montana County Weed Act requiring landowners to manage their noxious weeds.

The Montana Weed Control Association has been in existence for over 50 years to provide education and networking for professional weed managers and private citizens; to encourage research for noxious weeds at our university systems; and to provide a professional platform for county weed districts. We are a membership-driven organization, and we rely on revenues from members, from our annual educational conference in January and various trainings we provide during a year, and from our specialty license plate (the one with the cowboy on the horse and the cow). We also provide publications such as weed I.D. books and Weeds of the Prairies. Our website www.mtweed.org has more information than you can shake a stick at. There you will find an extensive calendar of events for weed-related activities in Montana, information on all 32 state-listed weeds, current news and events, classifieds related to the industry, and if you are looking for someone to manage your weeds, we provide a "yellow pages" of commercial applicators, aquatic control applicators, bio control

applicators and producers who will help manage your weeds with their animals. We have a large library on our website, so if you are looking for the Montana State Weed Management Plan or the Montana County Weed Act, you will find it there.

We have also have a presence on Facebook and Twitter, whose following grows each month. We provide \$3,000 in scholarships to second-year college students each year (applications due May 1). We have a directory of weed managers and commercial applicators offered online for free download and printing. We have also found success with our annual members' photos annual calendar. This isn't just a "weed" calendar; with scenic photos of Montana taken by members across our state, it is worthy of hanging on your wall or sending as a gift at Christmas. A side benefit is a little weed education that comes with each month in a sidebar.

It has been our experience that once a person becomes a weedie, they are a weedie for life! Once they learn about noxious weeds, they will never again be able to drive down the interstate, watch a movie, see an ad or play a round of golf without seeing the noxious weeds that are present. Becoming a weedie helps you become a better steward of the land in the Big Sky Country. Please visit www.mtweed.org for more information.

"Stick With The Best!"

BOWMAN
APPLIANCE SERVICE

1035 S. Main St. • Butte, Montana 59701
(406) 723-6797

We Work On All Major Brands.

In Ennis, Sheridan and Twin Bridges and surrounding areas
EVERY WEDNESDAY

Allhands Excavation, LLC.

Dan Allhands 406-842-5777
 Pete Allhands 406-596-7980
 Brian Allhands 406-596-1357

Ponds, Roads, Reclamation, Stream Bank Stabilization,
 Utility Work, Foundations, Ditch Cleaning, Irrigation
 Diversions, and much more!

EXCAVATOR, ROAD GRADER, DOZER, BACKHOE,
 DUMP TRUCKS, BELLY DUMP, TRANSPORT Put yourself in good hands!



D&D Auto, Inc.
AUTO & TRUCK SALES
We Are YOUR Go to Guys!
 Auto & Truck Repair - Gas or Diesel - All Makes & Models

We Make Hydraulic Hoses
 New Tires, Wheels & Tire Repairs
 Engines & Transmissions Installed - Car & Truck Accessories
 We Install Windshields - Alignments

ENNIS • 682-4537
 Daily Parts Deliveries to Alder, Sheridan & Twin Bridges Areas
24 Hour Towing (pager 406-522-1056)



TASTING ROOM HOURS
Monday - Saturday 10am - 8pm
Sunday 12-6pm

Tours ★ Tastings ★ Cocktails
Spirits With a Western Flavor



Patsy Eckert "Night Hawks over a Meadow"



Jessie Mackay "Red Trees"



Carol Zirkle "Half Moon Over the Lane"

Depot Gallery to host theme-based art walk

Submitted by Depot Gallery

Depot Gallery owner Vicki Lubke and manager Fred Donich are excited to begin the 2013 season of art walks this Friday, June 21, with a reception from 5-8

p.m. All are welcome to come and take pleasure in lovely works of art, while enjoying wine, goodies and great conversation with artists and other Ennis art enthusiasts.

This year, for the first show,

rather than focusing on one or two individual artists, the gallery will highlight the works of all its landscape artists. This will be the first of the theme-based shows to be presented throughout the art walk season. Donich

feels that featuring a particular theme will give even long-time Depot patrons a different way to view and appreciate the works of their favorite artists.

In addition to those whose images are pictured here, other

artists who will be featured in the landscape show are Ed Totten, Jerolyn Dirks, Shirley Cleary, Bonnie Holmes and Pat Lambrecht-Hould. Seeing the landscapes side by side should give viewers a greater appreciation for the dif-

ferences among the artists and a deeper understanding of each artist's vision.

Donich and Lubke urge everyone to come and enjoy the fun and take a new look at the work of some award-winning artists.



Cooperative effort pays off

Submitted by Margie Edsall

Laurin Canyon and surrounding areas has always had problems with Spotted Knapweed, much of it on BLM. Madison County and the BLM have continued to treat accessible areas, but were never able to do much beyond that. Last year an attempt to do aerial work on these infestations were planned, but because of drought conditions had to be abandoned. Everyone involved thought it would be in the best interest to postpone treatment in this area until the spring when the treatment would be more effective.

With the passing of winter, we did receive moisture and felt more comfortable with carrying out the original plans, but then came the budget woes with the

sequestration. Everyone had to take the time to look over budgets and assess just what would be available to manage the noxious weeds in the area. Unfortunately, we all realized that what we had planned to spray in the area would be greatly reduced. The private landowner that had also planned to work with us, and the helicopter was still willing to participate, and we felt it was very important to carry out this effort to the best of our abilities.

That is when the Butte Treasure State Chapter of the Mule Deer Foundation approached the County. One of their main missions is to help in the conservation of public lands that many of their members and other recreationists utilize. The management of noxious weeds

has continued to be a priority with this group in maintaining overall health of these lands that support a wide variety of wildlife. With just a few phone calls and a letter outlining the overall project, Madison County received notification that the Chapter was willing to contribute financial support for this very important project. With the help of the Butte Treasure State Mule Deer Foundation and the cooperation of the private landowner as well, close to 450 acres of Spotted Knapweed has been treated in the area of Laurin Canyon.

With the efforts of the Mule Deer Foundation, Bureau of Land Management, our private landowners and Madison County, a very large problem area is finally being dealt with.

Madison Valley Storage

(406) 581-7878 or (406) 682-7878

New, clean and well-kept 9 sizes to choose from

Yearly prices available
Lowest rates in the valley

VIGILANTE CONSTRUCTION

BRAD SCHWEND (406) 842-5888

We hang our reputation on every job!

DEPOT GALLERY

artwalk landscape show

RECEPTION

Friday, June 21st
5-8 p.m.
Wine & hors d'oeuvres

— All Are Welcome —

Healing Waters Lodge

AUCTION

Selling real estate only Does not include guide/fishing business or name

Tuesday, July 2nd at 11am
270 Tuke Lane, Twin Bridges, MT 59754

TRACT 1: Healing Waters Lodge
NOMINAL OPENING BID \$500,000
Located in the heart of Montana's finest fishing and hunting landscapes. Offers picturesque grounds with pond where you can cast to rising trout. The lodge offers relaxing sitting areas, fireplace and 5 bedrooms to retire for the evening. Separate four-plex has 4 bedrooms and baths with uncompromising quality. The Commons is Montana dining at its very best, complete with commercial kitchen, wine cases, floor to ceiling fireplace and a view of the sun setting over the pond. Sit on one of the many decks and take in the magnificent mountain ranges or stroll around the 15 acre estate breathing fresh mountain air. 2.5-acre, professionally constructed pond with brown & rainbow trout, lined, live stream bed, recirculation pumps. Wisconsin Creek (seasonal)
Potential Uses Include: high end fishing lodge • corporate or family retreat • bed & breakfast • rehab sanctuary

TRACT 2: 30.321 Acres
NOMINAL OPENING BID \$10,000
Unimproved with Leonard Slough Creek, fenced. Sells separately. Corner parcel with Middle Road on West & Tuke Lane on North. Auction Will Be Conducted On-Site

PROPERTY PREVIEWS
Sun, June 2nd (11am-4pm), Fri, June 21st (10am-2pm), Sat, June 29th (10am-2pm)

FLY FISHING
More angling choices within easy driving distance in Montana. You can float one of the larger western rivers in SW Montana such as the Madison, Jefferson, Big Hole or Beaverhead. You can walk wade on smaller meadow streams like the Ruby, the Upper Clark's Fork, the South Boulder or Flint Creek which all flow through beautiful private ranches.

LOCATION
You can fly into either Butte or Bozeman, MT. Travel time from Bozeman is 90± minutes, and from Butte, just under 60 minutes. Private aircraft have Twin Bridges airport 4300' paved runway just 5 minutes away.

Call or click!
(406) 652-2266
www.mbauction.com

Grand Marshals



Photos by Alyse Backus

Left: Bill and Marge Bowersox will represent the North Meadow Creek area outside of McAllister.

Top: Devonna and Lynn Owens treasure the view from their North Meadow Creek home.

Ennis parade to honor ranches, local history, arts

By Alyse Backus
THE MADISONIAN
news@madisoniannews.com

The Ennis Fourth of July Parade has been a town staple since 1935. Floats make their way down Main Street and each year, entry numbers grow and more visitors line the small town street to take in the colorful floats.

The parade holds a tradition of Ennis hometown pride and many consider it a high honor to be named Grand Marshal of the Fourth of July celebration. This year, Lynn and Devonna Owen and William and Marge Bowersox will experience that sense of honor.

Their neighbors, Stacy Andrews and Gary Fuis, nominated them to be this year's Grand Marshals because the two families represent a strong staple of the Madison Valley ranching community.

"It was a surprise for sure," said Marge Bowersox.

"Being a Grand Marshal is definitely an honor," said Lynn Owens.

Both of the families' ranches are located along North Meadow Creek, a

tributary of the Madison River that flows from the high peaks on the west side of the iconic river.

Marge Bowersox was born in Ennis in 1929. She was raised in the Bradley Basin area near Norris. Bill was born in Glendive in 1926. His family then moved to the North Meadow Creek ranch the Bowersoxes live on today.

"I have been here since I was three," said Bill.

Bill and Marge both graduated from high school in Ennis. The two saw a lot of each other at local dances and eventually married in 1948. After spending their first ten years together in Bradley Basin, the couple moved to Bill's family ranch.

Their white house with a beautifully manicured lawn and flowerbeds sits just off of the county road. The home replaced a log cabin that had fir slabs for a roof.

"Bill moved the white house from over by Harrison," said Marge.

The house was literally moved down the highway to its current spot.

Marge worked at the talc mine in Madison

County for eight years, then at the local hospital for 14 years. In addition, she served on the Norris Parent Teacher Association.

Marge is known for her expert seamstress skills. She has created wedding dresses that are described as "works of art." In addition to her sewing skills, Marge is known to drop by a decadent berry pie for her neighbors to enjoy.

Bill continues to work the ranchland he has owned since 1959. He served on the school board at Norris and drove an Ennis School bus. During the winter, Bill grooms snowmobile trails by dragging an old bed frame across the snow.

The Bowersoxes have three children and nine grandchildren. Several family members are making the trip to Ennis to support Bill and Marge as they act as Grand Marshals.

Devonna Owens was born in St. Paul, Minn., in 1938. Her family moved to Jeffers in the early 1940s and she graduated from Ennis High School.

Lynn was born in Ucon, Idaho, in 1930. After completing the first years of high school in Missoula,

Lynn's family bought and consolidated three different ranches on North Meadow Creek.

Lynn and Devonna met in Ennis and would marry in 1955.

Lynn attended Western Montana College in Dillon before heading to the Korean War. After he returned, he finished up school in Bozeman and earned a degree as an electrical engineer.

His career took the couple to many places including Arizona and Alaska.

"We finished college and then went on to see the world before we came back," said Devonna.

Devonna attended college in Bozeman where she earned a degree as a registered nurse. She worked at the Ennis Hospital after returning to Montana. She specialized in care for patients in critical condition. She then worked in the hospice field.

Both Lynn and Devonna have been an integral part of the community and have provided many public services. Devonna was involved in 4-H for more than 20 years. Lynn has been an asset to the

Madison Valley ranching community and teaches other local ranchers about practical ranching. He is a longtime friend of the Madison Conservation District and received a stewardship award last year. A number of years ago, Lynn organized and chaired Montana's Madison Valley Ranchlands Group. On top of that, Lynn was the first to have a wheel line irrigation system in the valley.

The two have four children and 11 grandchildren.

In addition to the Grand Marshals, the Ennis Chamber of Commerce is honoring the area's rich history and budding arts community.

The Virginia City 150th Anniversary Celebration and the Madison Valley Historical Association are this year's non-profit honorees.

The Madison Valley Historical Association preserves local collections of artifacts, tapes, photographs and stories that represent historical importance to the valley. The MHVA Museum opened in 2010 just west of Ennis.

One of the museum's most famous exhibits is the "Madison Monster." Back in the early days of the Madison Valley, a mysterious creature terrorized livestock in the area. A rancher finally killed the strange animal, which appears to be some type of canine.

The 150th anniversary of the discovery of gold in Alder Gulch marks an important milestone for all of southwestern Montana. That gold rush brought many people and new industries to the area.

This year, the parade also adds an arts and cultural honoree, Jim Dolan, an artist based in Belgrade.

Dolan is well known for the detailed metal sculptures he has created over the last forty years. Several of Dolan's sculptures can be seen on the streets of Ennis. His work includes "A Wreck Waiting to Happen" in Wild Rose Park, a wild mustang, fly-fisherman and surveyor.

This year's parade theme is "Miners, Merchants and Vigilantes." The parade starts at 10 a.m. on July 4 and will make its way through historic downtown Ennis.



How to protect your family's skin from summer's scrapes, bites and burns

Statepoint Media

Afternoons at the pool, family barbecues, outdoor sports and picnics all mean summertime has arrived. With the change in temperature comes additional exposure to the elements and the attendant skin scrapes, bites and burns.

Pharmacy shelves are lined with products to treat these common summer ailments. But with more Americans concerned about using harsh chemicals on their bodies, families are frequently turning to natural alternatives that are just as effective.

To help your family "go natural" in your skin remedies, follow these tips throughout your fun-filled summer.

Bugs

Rather than spraying your yard with products that contain potentially harmful chemicals like DEET and PABA, consider citronella candles. The fragrance should not only keep bugs at bay, but the soft glow sets a pleasant mood for your al fresco meals and parties.

Of course, you can also prevent being bugged all

together by avoiding the outdoors during dusk, when mosquitos come out in full force. But when the outdoors calls, try applying a natural insect repellent. For example, JASON brand Quit Bugging Me! Insect Repellent Spray, is comprised of the active ingredients soybean oil and geranium oil, and is safe to apply on children (with adult supervision).

If you do get bitten, don't scratch. That can promote infection. Instead, apply a cold compress to the bite. It's a tried and true inexpensive path to itch relief.

Sunburn

If your yard lacks shade, improve your eco-footprint and create shade by planting a tree or two. You may not be able to reap the shady benefits this year, but you'll thank yourself in the future. You may also consider building a gazebo or porch overhang for more immediate relief from the sun.

Wear a hat and sunglasses outdoors and apply a sunscreen with broad spectrum UVA/UVB protection.

Spend too long in the sun?

Treat yourself to nature's burn relief, Aloe Vera. Look for a gel that is free of parabens and artificial colors and phthalates. For example, JASON brand Soothing Aloe Vera Gel soothes dry, irritated, sun damaged or newly shaven skin, while a boost of nourishing Allantoin and Vitamin B5 helps to replenish and recondition.

Scrapes

Bike rides, baseball, basketball and trips to the playground all present an opportunity for slips and falls. On such adventures, be sure to carry a small first aid kit so you can clean and cover minor injuries right away.

A natural anti-bacterial alternative, JASON brand Pure Tea Tree Oil, delivers skin relief and is available at natural food stores such as Whole Foods Market. Pack cotton swabs and bandages in a variety of shapes and sizes to be best prepared.

More information about protecting your skin naturally can be found at www.JasonPersonalCare.com.

This summer, take a cue from nature to ward off seasonal skin woes.



The facts about your dental health and pregnancy

Statepoint Media

Many moms-to-be receive advice from well-meaning friends and relatives. Yet there seem to be myths about taking care of teeth and gums -- if dental health is even mentioned at all.

While pregnancy comes with many responsibilities, oral hygiene should be a top priority to ensure both mother and child are set up for healthy habits that will last a lifetime.

What to expect

Hormonal changes can lead to an increased risk of gum disease (gingivitis) throughout pregnancy. Some women may develop "pregnancy tumors," painless bumps on their gums, most often during their second trimester. In addition to flossing once daily and brushing twice daily, work closely with your dentist throughout pregnancy to flag issues before they become problematic.

"Delaying necessary treatment for dental problems could result in significant risk to you and your baby," said Dr. Maria Lopez Howell, DDS, spokesperson for the American Dental Association (ADA). "It's worth your time to visit the

dentist even if you don't think you have dental problems."

According to national experts in women's health, public health and dental health, a new consensus statement based on scientific evidence reaffirms that preventive oral care, including the use of dental X-rays, pain medication and local anesthesia for dental procedures, is safe throughout pregnancy.

"Don't put dental care on the back burner, as the complications could far outweigh potential risks. Make it part of your health and wellness visits during pregnancy," Dr. Howell said.

Post-pregnancy, maintaining good dental health habits are critical for everyone in the family. Evidence suggests that most infants and young children "catch" the germs that cause cavities from their parents or caregivers. Refrain from sharing utensils or attempting to "clean" a pacifier by putting it in your own mouth, as these types of activities may transfer cavity-causing germs.

Take Baby Steps to Better Dental Health

Together with the ADA, the American College of

Obstetricians and Gynecologists (ACOG), the National Maternal and Child Oral Health Resource Center at Georgetown University (OHRC) and the Health Resources and Services Administration (HRSA), recommend following a few simple steps to help maintain a healthy mouth during pregnancy:

- Get dental health treatment, as recommended by your dentist, before delivery. Schedule an appointment with your dentist if your last dental visit was more than six months ago. The use of dental X-rays, pain medication and local anesthesia for dental procedures is safe throughout pregnancy.

- If you experience "morning sickness," rinse your mouth with a teaspoon of baking soda in a cup of water to prevent stomach acid from harming your teeth.

- Drink water throughout the day that contains the recommended amount of fluoride to help to keep you hydrated and prevent tooth decay.

- Avoid foods that are high in added sugar and drink water or milk instead of juice, fruit-flavored drinks or soda.

JUNE				
MON	TUES	WEDS	THURS	FRI
3 Marks Blake	4 Marks Blake	5 Hensel Marks Holland	6 Marks Hensel	7 Marks Moran Hensel
10 Blake	11 Blake Marks	12 Marks Hensel	13 Marks Hensel	14 Marks Hensel Moran
17 Marks Stearns	18 Moran Marks Stearns	19 Hensel Stearns Holland	20 Blake Hensel	21 Blake Hensel
24 Marks Hensel	25 Marks Hensel	26 Hensel Stearns	27 Blake Stearns	28 Blake Stearns

Call 406.682.4223
to schedule an appointment with a provider of your choice • 8:30 am to 5:00 pm

305 North Main • Ennis, MT 59729
Clinic access through lower level.

Complete Family Medical Care:
Pediatrics, Adult Medicine, Geriatrics, Dermatology, Gynecology, Orthopedics, Physical Exams

Dr. Curtis Blake, Family Medicine

Dr. RD Marks, Family Medicine

Marty Hensel, PA-C, Family Medicine

Morgan Stearns, PA-C, Family Medicine

Dr. Patrick Holland, Gynecology

Dr. Patricia Moran, Family Medicine

Make sure you dispose of unused prescription drugs properly

Statepoint Media

What do you do with your unused prescription pills and over-the-counter medications? Do you throw them away? Flush them down the toilet? Simply leave them in your cabinet for a rainy day?

Doing any of the above can provoke tragic consequences including enabling the drugs to get into the wrong hands or find their way into drinking water and irrigation supplies. That's why it's crucial to safely dispose of unused prescription drugs, over-the-counter drugs, veterinary medications and nutritional supplements.

According to the 2010 National Survey on Drug Use and Health, one-quarter of first-time illegal drug users 12 years and older began by using prescription drugs non-medically.

Prescription drugs are abused far more frequently than illicit drugs for one simple reason: they can be found in almost every home, free for the taking. What's more, drug overdose deaths, mostly related to addictive painkillers, rose for the 11th straight year

in 2010, according to the U.S. Centers for Disease Control and Prevention.

And while it sounds quick and easy to flush pills down the toilet or throw them in the wastebasket, this method can be harmful to the environment and to people's health. According to the U.S. Geological Survey, nearly 80 percent of recently tested rivers contained traces of pharmaceuticals, including antibiotics, steroids, hormones and contraceptives.

So how can the average person go from being part of the problem to being part of the solution?

Begin by examining every prescription you bring into your home. Ask your doctor to ensure he or she is prescribing in the amount you will use.

Consider locking your medicine cabinet or moving prescriptions to a secure location, safe from the unwelcome explorations of children or intruders.

Remove any leftover drugs from your home promptly and dispose of them in a way that has as little environmental impact as possible.

"Drug take-back programs

are a great way to get rid of unused medications," says John Waffenschmidt, Vice President of Community Affairs and Environmental Science at Covanta Energy, the largest owner and operator of "Energy-from-Waste" facilities in North America. Covanta works with organizations to provide safe disposal of medications collected by drug take-back programs. The company does so free of charge, safely disposing of drugs at its facilities.

Since its inception in 2010, Covanta's Rx4Safety program is responsible for having destroyed more than 600,000 pounds of unwanted medications nationwide. Partnerships like these have resulted in the proliferation of successful drug take-back programs that allow prescription drugs to be dropped off at secure locations, such as police stations or at special events held throughout the year, for transport to facilities where they can be destroyed safely.

Take a positive step forward in ensuring your community is safer and cleaner.

RUBY VALLEY MEDICAL CLINICS

Sheridan 210 E Crofoot (406) 842-5056
Twin Bridges 104 S Madison (406) 684-5546

SERVICES OFFERED:

- * Office Visits
- * Cardiac Rehab
- * Well-Woman Exams
- * DOT Physicals
- * Sports Physicals
- * Well-Child Check-Ups
- * Life Insurance Exams

*Acute and Chronic Health Care

ALSO PLEASED TO OFFER:

- * Sliding Scale Program (based on income)
- * Payment Plans
- * Accepting Most Insurances including Medicare & Medicaid

Emily Hayes
LICENSED MASSAGE THERAPIST

NOW ACCEPTING NEW CLIENTS

LOCATED AT TRENE SALON
59 MT HWY 287 • ENNIS

406-570-7019
EWHMASSAGE@GMAIL.COM

Patrick Watson PA-C Chris Hartsfield APRN, FNP-BC Kathy Tetraull PA-C Roman M. Hendrickson, M.D.

WWW.RUBYVALLEYHOSPITAL.COM

Want to advertise in our HEALTH & WELLNESS section?

Call **Susanne** at **406.682.7755**

Beaverhead Foundation supports Barrett Hospital Foundation

By Stephanie Vinson
BARRETT MEMORIAL HOSPITAL

The Beaverhead Foundation recently awarded Barrett Hospital Foundation \$3,500 to purchase an Arjo automatic patient lift. The unit will be added to one of the patient rooms at the hospital and will make it safer for patients and hospital employees.

The lift system consists

of an electric motor with a handheld control a lift harness to support the patient, and an overhead track system. Patients can be easily and securely transferred from one chair or bed to another and also transported into the restroom.

Research has shown that mechanical lifts can reduce the risk of accidents and can also reduce the risk of lifting injuries for staff while moving

or transporting patients. Without mechanical lift systems, moving a patient can be very labor intensive and can require two or more staff.

The Hospital strives to be the model in rural healthcare delivery for the United States in all facets of primary health services.

For more information, please contact the Barrett Hospital Foundation at (406) 683-6737.

Ask the Expert

Local businesses have the information you need to make a variety of decisions. Best of all, they're here and available to meet your needs. In our "Ask the Experts" section, we went to these local experts for information on topics important to you.

Ask the Expert forum appears the second Thursday of each month. If you have questions for these area professionals e-mail us at editor@madisoniannews.com.

WEBSITE DESIGNER

Q: A sales prospect called me recently and mentioned that, after visiting my website, he wasn't sure I was still in business. My website was professionally designed, looks nice, but it hasn't changed in about 8 years. Should I be concerned?

A: Website styles evolve quickly and I wouldn't be surprised if your site looks a little dated. I don't propose chasing the latest web design trends but replacing photos and updating your text, at least once a year, will keep your site from getting stale. If your budget is tight and you have to take your own photos, be sure to pay attention to background light, clutter and consistency. Focusing some time on the details of your content can also instigate new ideas for selling your products or services on the web. Meticulously reviewing the text on your site will help you identify issues that you might have overlooked eight years ago.



Debra McNeill, Owner

TOBACCO ROOT GRAFFICS • 406-684-5344

AUCTIONS

Q: Do you charge a buyer's premium?

A: HAGEDORN AUCTION NEVER charges a 'buyer's premium'! This is a fee of 10-15% (or more) added to the BUYER'S final bid by some auctioneers in ADDITION to the fees they are charging the seller. By charging this 'premium' to BUYERS they can market their services to sellers for what APPEARS to be a 'lower' rate. However this can end up COSTING the seller MORE money in lost buyers and lower bids than they supposedly 'saved'. Many buyers will not attend an auction with a buyer's premium. Those who do will likely determine what they are willing to pay and then BID proportionately LESS in anticipation of paying the premium. This 'buyer's' fee is still coming out of the seller's pocket AND they lost other bidders who would have helped drive higher bids. The more bidders at your auction the more likely you are to get fair market value. We love buyers! WWW.HAGEDORNAUCTION.COM



SCOTT HAGEDORN, AUCTIONEER
HAGEDORN AUCTION • 406-684-5181

DENTISTRY

Q: Does it matter if I use a hard or soft toothbrush and how important is fluoride toothpaste?

A: The use of a hard or medium bristle toothbrush is unnecessary and will often cause damage to your gums. A soft bristle toothbrush should always be used. It is important to use circular motions, not a back-and-forth scrubbing action. Brushing aggressively can lead to gum recession, tooth wear and sensitivity. Fluoride toothpaste is a valuable tool to help prevent decay. Fluoride acts to help remineralize small areas of decay and prevent further decay from occurring. Brushing should occur after the use of floss and mouthrinse. Once you have completed brushing, spit out the toothpaste and don't rinse your mouth for 30 minutes. This will allow some of the fluoride from the toothpaste to remain on your teeth and begin the tooth healing process. At Summit Dental, Dr. Samson believes prevention is the key to strong oral health.



Dr. William Samson, DDS
SUMMIT DENTAL • 406-404-1186

ELECTRICAL CONTRACTOR

Q: My breakers are not labeled in my panel. Is there a way to identify what devices are controlled by each breaker?

A: You could turn things on and try to identify devices that way along with some process of elimination. There are also tools sold that will assist in the identification of circuits. Mainly, this process takes time and may be rather complicated for an untrained person to identify some circuits. Items that are not being used at all or are used infrequently may be hard to locate and identify. This is something that should be done before you need it so, don't wait until there is an emergency.



Dan Kenworthy, Owner

KENWORTHY ELECTRIC • 406-842-5865

GENERAL HEALTH

Q: Why do I get a bill from MVMC when I don't owe any money?

A: Madison Valley Medical Center (and many other healthcare facilities) will send a patient a bill that shows no money is owed when they are billing your insurance. This is to help keep the patient informed that we are awaiting response from your insurance. Once the facility receives a response from your insurance your bill will reflect what has been applied to your account and show what balance remains. If you have questions about your bill at Madison Valley Medical Center, contact one of our Patient Account Representatives at 682-6842.



Sarah Wright, Patient Account Services
MADISON VALLEY MEDICAL CENTER • 406.682.4223

WELDING

Q: What is the best arc-welding rod to use for small garage projects?

A: While I am a firm believer in the Farm/Ranch rod E6011 and E7018, usually the answer requires more information. What are you welding? What is the metal's condition and thickness? Many different arc-welding electrodes may be suitable for different situations. The "60" in 6011 means 60,000 psi of tensile strength (ability to resist being pulled apart). The "1" in 6011 means it can be run in any position: Flat, horizontal, vertical and overhead. And the last "1" in 6011 means the polarity (AC/DC) required to burn and melt the electrode. E6011 the Farm/Ranch electrode is a fast freeze rod-suitable for painted, rusted or grease-ridden metal. This rod can be run on AC power and is very strong and versatile. E7018 will provide even more versatility and holding power. It is great for cover passes to fill large gaps. You can use an oscillating or drag motion to manipulate the weld with these electrodes. Practice welds and amperage settings are important to producing a strong/sound weld.



Chris McCown, Welding Instructor
ENNIS CONTINUING EDUCATION • 406-682-4258

CHIROPRACTIC

Q: My muscles are very tight and stretching isn't helping to loosen them up. Would pairing chiropractic with stretching be helpful?

A: Our muscles have two main goals: 1. To contract in sync with each other in order to move our bodies and 2. To stabilize and support all of our joints. When our joints are not moving in sync with one another, our muscles have to work overtime to create stability, thereby, becoming tight. This often will cause imbalance in muscles that work with and against each other. By getting adjusted and making sure those joints are moving freely, the muscles can relax and go back to doing the job they should be doing- creating movement. Occasionally, freeing up that joint doesn't do the trick, that's when muscle techniques like release therapy can get the muscles back in balance.



Dr. Kate Althans, Chiropractor

ALTHANS CHIROPRACTIC & FUNCTIONAL NUTRITION • 406-682-5634

REAL ESTATE

Q: We are purchasing a new home. What do we need to do at this time?

A: (Part three) Buying a new home is exciting and you are anxious to move and settle in. However, there are some things you should do immediately:
9. Check your street number. Make sure it is visible from the road to visitors, delivery vehicles and most importantly Emergency Services such as fire and ambulance.
10. Locate emergency shut-offs. Know how to shut off power, water and gas and know the location of main and sub electrical panel boxes.
11. Check pilot lights on the stove, water heater, gas fireplace and gas dryer.
12. Store hazardous items. To ensure safety of your family and pets, all flammable substances should be stored in a locked location away from any flame such as pilot lights, stove, water heaters and gas dryers. Identify and label substances left by previous owners. Please call me if you are considering selling your home or purchasing a home or land. I will be happy to meet you and answer any questions you have.



Bill Mercer, Realtor
CLEARWATER MONTANA REAL ESTATE • 406-581-5574

INVESTMENT ADVISORY & INSURANCE SERVICES

Q: Save now or save later?

A: Most people have good intentions about saving for retirement. The rewards of starting to save early for retirement far outweigh the cost of waiting. By contributing even small amounts each month, you may be able to amass a great deal over the long term. One helpful method is to allocate a specific dollar amount or percentage of your salary every month and to pay yourself as though saving for retirement were a required expense. There is a strong case for an early start so you can take advantage of the power of compounding. Contributions have the potential to earn interest, and so does your reinvested interest. This is a good example of letting your money work for you.



Jon Goodman, Owner
YELLOWSTONE WEALTH MANAGEMENT • 406-682-3326

This material was written and prepared by Emerald, 2012 Emerald Connect, Inc. Securities offered through LPL Financial, Member FINRA/SIPC. Investment advice offered through YWM, a registered investment advisor and separate entity from LPL Financial.
An Investor should consider their ability to continue purchasing through fluctuating price levels. Such a plan does not assure a profit and does not protect against loss in declining markets.

YOUR EXPERTISE

Q: A question frequently asked by your customers.

A: This is your opportunity to provide your current and future customers with accurate, valuable information about your product or service.

Something new about your business you would like to promote? This is a great way to do accomplish that, too. Don't miss your chance to secure this platform for your area of expertise.

Call 682-7755 or email s.hill@madisoniannews.com to reserve this space!

Your Photo Here

Your Name, Your Title

YOUR BUSINESS NAME • XXX-XXX-XXXX

PRINTING

Q: I want to get the most for my money with Direct Mail. Can I send my mailing to a particular demographic?

A: Excellent question! Mail may be one of the most effective ways of reaching out to potential new customers or members of your business or organization. Direct Mail allows you to be as general or specific as you would like when distributing your valuable information. For example, you could mail to your entire community and are sure to reach everyone. Or, you could narrow your field to a highly specific group based on factors like gender, income level, or even particular interests the residents have expressed. So before you even sit down at your computer to design your next great mailer, ask yourself 'who is my desired audience'? Then pick up the phone and call Executive Services to find out how we can help make your mailing a success!



Dean & Ann Halse, Owners
Executive Services • 406-586-2600

CONSTRUCTION

Q: I am planning on building a home in Madison County and have a pretty good idea of what I want. Do I need to go to the expense of hiring an architect to draw up the plans?

A: No, Madison County doesn't require an architect's plan in order to issue a building permit. I often design homes and room additions for my clients. The computer design software that I use allows me to lay out a number of concepts in a short time. Complicated plans then need to be reviewed by a structural engineer. Often an owner will arrive with a folder full of pictures and ideas that lack continuity of style. The task of the designer is to incorporate the client's ideas and requirements into an esthetically pleasing design that can be built within the given budget. If the homeowner is willing to take the time and is able to make design decisions it can be a rewarding experience creating a truly custom home.



Brad Schwend, Owner/Builder
VIGILANTE CONSTRUCTION • 406-842-5888

A new look for Harrison baseball facilities



Submitted by Ann Hokanson

Since mid April the Harrison Baseball facilities have been receiving a facelift. With the help of baseball families, the local 4-H club and Northwest Farm Credit Services the buildings are looking pretty spiffy.

Last fall LeAnne DeFrance, the local "Baseball Commissioner", secured a grant from Northwest Farm Credit Services in the amount of \$1,000 with the intent purpose of fixing up the Harrison Baseball fields. The buildings, which include two dugouts, a club house/concession stand and four sets of bleachers, have stood in pretty dilapidated condition needing sanding, painting and a bit of repair for the past few years. Over a period of almost two months, trying to fit in baseball games, school activities, and all those other things which keep us all busy, several groups of parents, players and community members have worked together to get this task nearly finished.

After seeing the progress being made and the work still needing to be done, Tracy Brennan, Harrison Tee Ball coach, organized a baseball

fund raising dinner and baked goods auction. On May 30, baseball families contributed to an excellent meal of beef brisket, sloppy joes and brats with sauerkraut with all the fixings and raised another \$1,000 (or more, the final tally isn't in yet).

On Thursday, June 6, the Big Sky Wranglers 4-H club along with people from NWFC and the community pushed toward helping to complete this project. The 4-Her's painted (and painted and painted) bleachers, while others gave a coat of purple to the dugouts and clubhouse.

Huge thanks go out to LeAnne DeFrance for making this all happen, to Steve Ore (Tobacco Root Earth Services) for putting up a new door, new plexi-glass and hanging by his toenails to paint under the eaves, all the baseball families, community members and 4-Her's who helped with this project and Northwest Farm Credit Services for the funds for this endeavor.

Though the baseball season is over for 2013, the community can take pride in how great the baseball buildings will look for next season and many seasons to come.

Sheridan Library to host Gary R. Forney for program and book signing

Submitted by William Talbott
DIRECTOR,
SHERIDAN PUBLIC LIBRARY

The Friends of the Sheridan Library will host Ennis author Gary R. Forney for a presentation and signing of his recently published book "Dawn in El Dorado: The Early Mining Camps and Settlement of the Montana Territory." This event will be

held Sunday, June 23, at 7 p.m. at the Sheridan Public Library.

The discovery of gold in the Alder Gulch in May of 1863 not only created prodigious wealth, but violence, turbulent political battles, and attracted waves of immigrants from virtually every state, dozens of countries and all walks of life. The book chronicles the tragedies, intrigues, and some of the colorful characters that

shaped the formative years of the Montana Territory. With the approaching Sesquicentennial of the Montana Territory, it is an especially appropriate time to look back at Montana's dawning years: "This was a time when the communities and institutions which would form Montana were awakening, and a time when battles of Reconstruction were

reforming the United States."

Gary R. Forney is a retired college administrator who, with his wife, Cathy, has lived near Ennis since 1999. His published works include: a biography of Thomas Francis Meagher; the story of the Fairweather discovery party ("Discovery Men"); and a collection of short stories ("It Takes All Kinds") about some of the colorful characters from

Virginia City history.

He is currently working as an editor and contributing author for an anthology of stories pertaining to the 150-year history of Virginia City, Montana. He has also frequently contributed articles to the newsletters of the VCPA, the Gallatin Historical Society, the Madison Valley History Association, and the Montana Pioneer. Forney

currently serves on the board of directors for the Virginia City Preservation Alliance, the Madison County Library, and the Eling House Arts and Humanities Center.

Copies of "Dawn in El Dorado" will be available at the signing, in soft and hard cover editions. The Program is free and open to the public. For more information, please contact the library at 842-5770.

NOXIOUS WEED SPRAYING

• Jan Smith •

406-682-5510

P.O. Box 1242
Ennis, MT 59729

Nestegard Construction, LLC

~Custom Wood Floors~
Sales • Installation • Sanding
Finishing • Re-finishing

Bart Nestegard
PO Box 790
Ennis, MT 59729



nestegardconst@gmail.com
Cell: 581-6743
Fax/Home: 682-7634

RANCH SERVICES WEST

Proven results for consistent profitability and sustainability.

Ray Marxer - (406) 925-9320

- Management
- Consulting
- Herd Work

AREA SENIOR MEALS

SENIOR MEALS, VIRGINIA CITY

Senior meals now being served in Virginia City for citizens 60 and over every Tuesday and Thursday at the VC Cafe for a nominal fee of \$3. Lunches served 11:30-12 p.m.

MEALS FOR SENIORS, TWIN BRIDGES

The TBS&CC provides Meals for Seniors every Tuesday and Friday at 11:30 a.m. at the Wagon Wheel Restaurant in Twin Bridges for seniors 60 years and up. (Spouse and caregivers are invited.) Sign-in is requested and donation can be provided.

RUBY VALLEY FOOD PANTRY, SHERIDAN

Open Saturdays from 10-12 p.m. Located at 114 N. Main St. in New Beginnings. Serving the Ruby Valley from Silver Star to Virginia City. Contact Doris at 842-7161 or Wannetta at 842-5783 for more information.



Find Fellowship With Us

Rocky Mountain Baptist Church

Vern Grotzke, Pastor
682-4949

Sunday School 9:30 a.m.
Morning Worship 11 a.m.
Evening Service 6 p.m.
Mid-Week Service,
Wednesday 6 p.m.

606 Comley Way, Ennis
6 Blocks South of City Complex

Located in the heart of
Madison Valley for the
Hearts of Madison Valley

Dayspring Church

Worship 10:00 a.m.

Sunday School/Nursery

Non-Denominational Christ
Centered, Spirit Led Worship

Joel Trenkle/Pastor

596-0707 • 3648 Hwy 287
Between Sheridan & Twin Bridges

HARRISON COMMUNITY CHURCH

Harrison, Montana

Adult Bible Study ~ 9:30 a.m.

Sunday School &
Church Services ~ 10:30 a.m.

Pastor Joe Miller
Come Worship & Sing Praises
To Our God. Spread the Word!

Shepherd of the Hills Lutheran Church

The Church of Word
and Sacrament
Visitors Welcome

Pastor Ken Stensrud

- Sunday Service 9:00 am
- Bible Study 10:15 am
- Sunday School 10:15 am

Corner of Madison and Armitage St.
Ennis, Montana 406-682-4900

CHURCH OF JESUS CHRIST OF LATTER-DAY SAINTS

Ennis Branch

Sacrament Meeting
10:00 a.m.

Sunday School
11:20 a.m.

R S & Priesthood
12:10 p.m.

Family History Center
682-4911, 682-7415, 682-3614
Pres. Thompson 682-7415
133 MT Hwy 287

Christian Science Society

Sunday Service &
Sunday School 10 a.m.

1st & 3rd Wednesdays
Testimony Meetings 1 p.m.

ALL WELCOME

Each week a Bible lesson full of
healing Christian concepts is read
aloud in our Sunday service.

4983 US Hwy 287 N. • Ennis, Montana
www.spirituality.com

THE BAHAI FAITH

..Protect us from what lieth
in front of us and behind us,
above our heads, on our right,
on our left, below our feet
and every other side to which
we are exposed. Verily, Thy
protection over all things is
unfailing.

451-3923 or 1-800-UNITE
www.baha'i.org

ENNIS ASSEMBLY OF GOD

Love God, Love People

Pastor Charles Tucker
SUNDAY SERVICE

Schedule
Bible Study

Worship Service 10:45 a.m.
Children's Church 10:45

402 Madison Ave - Ennis, MT
589-4107



Madison Valley Presbyterian Church

WORSHIP
September - April ~ 11 a.m.
May - August ~ 9 a.m.

Everyone Welcome

Rev. Jean M. Johnson
682-4355 ~ Ennis
Corner of S. Charles & W. Hugel

NEW BEGINNINGS CHRISTIAN FELLOWSHIP

Your Local Assembly of God Church
114 N. Main, Sheridan
842-5845

Pastor Lonnie Horn

Sunday Service
10:30 a.m. (Children's Ministry)

Tuesday Night
6:30-8:00 p.m.

Adult Bible Study and Prayer

Wednesday (Kids/Youth)
6:30-8:00 p.m.

Kid's Club (3 yrs-4th grade)

Pre-Teen Youth Group (5th-6th grade)

Youth Group (7th-12th grade)

Ruby Valley Food Pantry
Saturdays: 10:00 a.m.-Noon

New Hope Pregnancy Support Center
Call Kathleen at 596-1080

We are a church dedicated
to serving this valley!



Liturgy Schedule
St. Patrick, Ennis
Sunday ~ 8:30 a.m.

St. Mary, Laurin
Sunday ~ 10:30 a.m.

Deacon Andy Dorrington,
Pastoral Administrator ~ 842-5588



Phil 2:16
Holding forth the word of life:

Dr. Ray Teston
Pastor
Sunday School ~ 9:45 a.m.
Morning Worship ~ 11:00 a.m.

5050 Hwy 287, PO Box 668, Ennis, MT

Phone 682-4244 SBC

MADISON VALLEY BAPTIST CHURCH

Aides for the hearing impaired

Ruby Valley United Methodist Parish

Invites You To Worship With Us

Pastor Ben Nardi

Office: (406)842-5934
Home: (406)842-7732

Church of the Valley

Twin Bridges

Sunday School 11:00 a.m.
Worship 11:00 a.m.

Bethel UMC
Sheridan

Worship 9:00 a.m.
Sunday School 10:15 a.m.
Extreme Faith Youth Group
Sunday Evenings

Ready Set Grow Preschool
Contact Kaycee Gilman 842-5311

Madison County Episcopal Churches

In full communion with the Evangelical Lutheran Church in America

Join Us for Sunday Worship!

Trinity
Jeffers/Ennis

St. Paul's
Virginia City

Christ Church
Sheridan

11:00 a.m.

9:00 a.m.

10:00 a.m.

www.rvec.org

Prayer requests:
682-4788 843-5296 842-7713



SUNDAY SERVICE

10 a.m.

Cowboy Church
Nevada City-In Tent

Tel. 406-842-5915



Montana Highway Patrol launches new dispatch number today

Submitted by Anastasia Burton

Starting today, drivers on Montana's highways have a new toll-free number to call for non-emergency traffic safety concerns: 1-855-MHP-3777 (647-3777).

Officials at the Montana Highway Patrol made the decision to change phone service carriers after monthly charges increased to nearly \$7,575. Total monthly charges with the new carrier are estimated at \$800, amounting to an annual savings of over \$81,000.

"We had the same toll-free dispatch number for over 20 years," said Colonel Kenton Hickethier of the Montana Highway Patrol. "However, we can now save some significant taxpayer dollars by switching phone service carriers, which means that we needed to change our toll-free number as well."

Callers to the old MHP dispatch phone number will now hear a recording directing them to dial the new number. The MHP Communications Center, located in Helena, is staffed around the clock. Last year, its dispatchers handled over 54,250 calls from around the state asking for assistance with issues ranging from stranded motorists to reports of drunken drivers.

Colonel Hickethier emphasized that drivers should still call 911 for emergencies.

"Calls to 911 ring directly into local communications centers and get EMS teams moving sooner," Colonel Hickethier said. "If the MHP number is dialed for a crash,

our dispatchers then have to contact the local sheriff's office, who in turn call EMS. This slows the initial medical response."

Examples of when drivers should call 1-855-MHP-3777 include:

- Stranded motorists
- Hazardous road conditions
- Debris on the highway
- Suspicious activity at a rest area
- Intoxicated or dangerous drivers
- To better assist personnel who answer the MHP dispatch number, motorists should have the following information readily available when calling:
 - Name
 - Cell phone number
 - Vehicle description when applicable
 - County location
 - Highway location (mile marker is helpful)

A statewide outreach campaign starts today to inform the public of the new MHP dispatch phone number, and continues through the end of the summer.

The new number, 1-855-MHP-3777, was chosen to reflect Montana law enforcement's symbolic ties to the historic vigilantes. For generations, the numbers 3-7-77 have been associated with the storied vigilantes who cleaned up the gold camps in 1864 and earned a place in history. The numbers have become a symbol of law and order, and appear on the shoulder patch and car door insignia of the Montana Highway Patrol.

Ennis Fourth of July Car Show and Swap Meet

Submitted by Mary Oliver
ENNIS CHAMBER OF COMMERCE

A variety of unique, classic and eye-catching cars from different eras, including hot rods, will roll into town and find their way to the Sportsman's Lodge (682-4242) in Ennis on July Fourth. Motorcycles, racecars and vintage military vehicles are also welcome. If it takes gas and you think it's cool, come

join the crowd. Registration is at the Sportsman's Lodge from 9-12:30 p.m. at \$20 per entry. Awards, generously donated by area businesses, will be presented at 1:30 p.m. From there participants may take in the Ennis Rodeo at 2 p.m. or go on a road cruise with the rest of the gang. To get an entry form or more information call Joe Richardson 406-581-2969 or Brent Oliver 406-579-1714.

"We just want people to

enjoy each other's company and each other's cars," Brent Oliver says.

"It's about having fun and meeting new people." Joe Richardson adds, "We have a fun mixture of cars and owners. There's also a wide range of ages, with teenagers showing off their rides along with more seasoned car owners."

The various Fourth of July Festivities (pancake breakfast, parade, veterans' memorial

celebration, main street BBQs, car show, rodeo, western band in the park) showcase the pride and spirit we all enjoy in the Madison Valley. Without the volunteers the Fourth of July would be just another day in rural America. Bring your family and friends for an Independence Day Celebration in Ennis that will be among your favorite memories. Sign on to www.ennischamberofcommerce.com to view the details of the events.

Spay/Neuter Clinic coming soon

Submitted by Terri Swier

The Ennis Spay and Neuter Task Force will be holding the one and only low-cost spay and neuter clinic of the year on Saturday, July 13, at Ennis City Hall.

This low-cost spay and

neuter clinic is available to all Madison County residents for a small fee of \$35 per dog (additional charge for dogs over 50 lbs.) and \$25 for cats. Vaccinations are also available for all-in-one shots or rabies shots at \$5 per vaccine.

Call Tami at 599-4893

to make your appointment. Please leave a message with information on your animal: dog or cat, male or female, preferred time of appointment and if your pet needs vaccinations.

Due to scheduling restrictions, this will be the

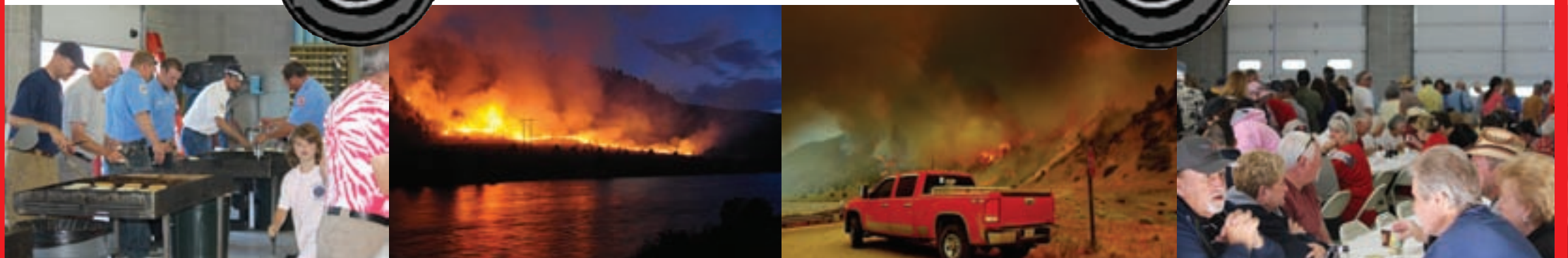
only clinic available this year. Please don't let this opportunity pass you by. And of course, as always, volunteers are needed and greatly appreciated!

PANCAKE BREAKFAST

Madison Valley Rural Fire District

When: July 4 6:00 am to 10:00 am
Where: Madison Valley Rural Fire Station
Cost: Adults \$7.00 - Children \$4.00

Thank You For Supporting Your Local Fire Department



Ruby Valley FFA attend Alumni Leadership Camp in Highwood

Submitted by Nicholas Haag

On a sunny morning, June 13, five Ruby Valley FFA members and four Beaverhead FFA members boarded a bus bound to Highwood, Montana for Alumni Leadership Camp (ALC). The nine FFA members participated in workshops focused on leadership, communication; and teamwork. They also had a volleyball tournament; icebreakers, a dance workshop; and created skits in their assigned color groups. At the end of the last full day there was a banquet and dance. The members also had many opportunities to meet people from all over the state and their FFA State Officers. Fun was had by all as they learned skills they could take back to their chapters and communities.



Front: Andrew George, Colton Tash (VP), Mackay Hirst, Nolan Konen, Josh Kneeland, Spencer Stewart, Clay Stephens. Back: Hannah Konen (Pres.), Abby Williams, Dusty Keim, Mikayla Tilstra (Sec.), Lauren Mehlhoff, Hallie Schwend, Kelsie Dustin, Advisor Jody Sandru.

Twin Bridges National Honor Society spring induction

Submitted by Jody Sandru

Congratulations to Twin Bridges High School NHS members. Membership is open in the spring to sophomores, juniors, and seniors who have attended Twin Bridges High School for at least one semester. Students must have a cumulative grade point average of 3.0 and be enrolled in the college-prep curriculum. Once the scholarship requirement is satisfied, candidates are then evaluated by the faculty council on the qualities of leadership, service, and character.

The Twin Bridges Chapter of National Honor Society's main focus is service and our chapter annually organizes the community-giving tree and recycles hundreds of bins of paper throughout the campus.

Madison Meadows

 Golf Course
 Ennis, Montana

3RD ANNUAL HULEN'S SWATFEST

Sunday, June 23 | 9:00 a.m.

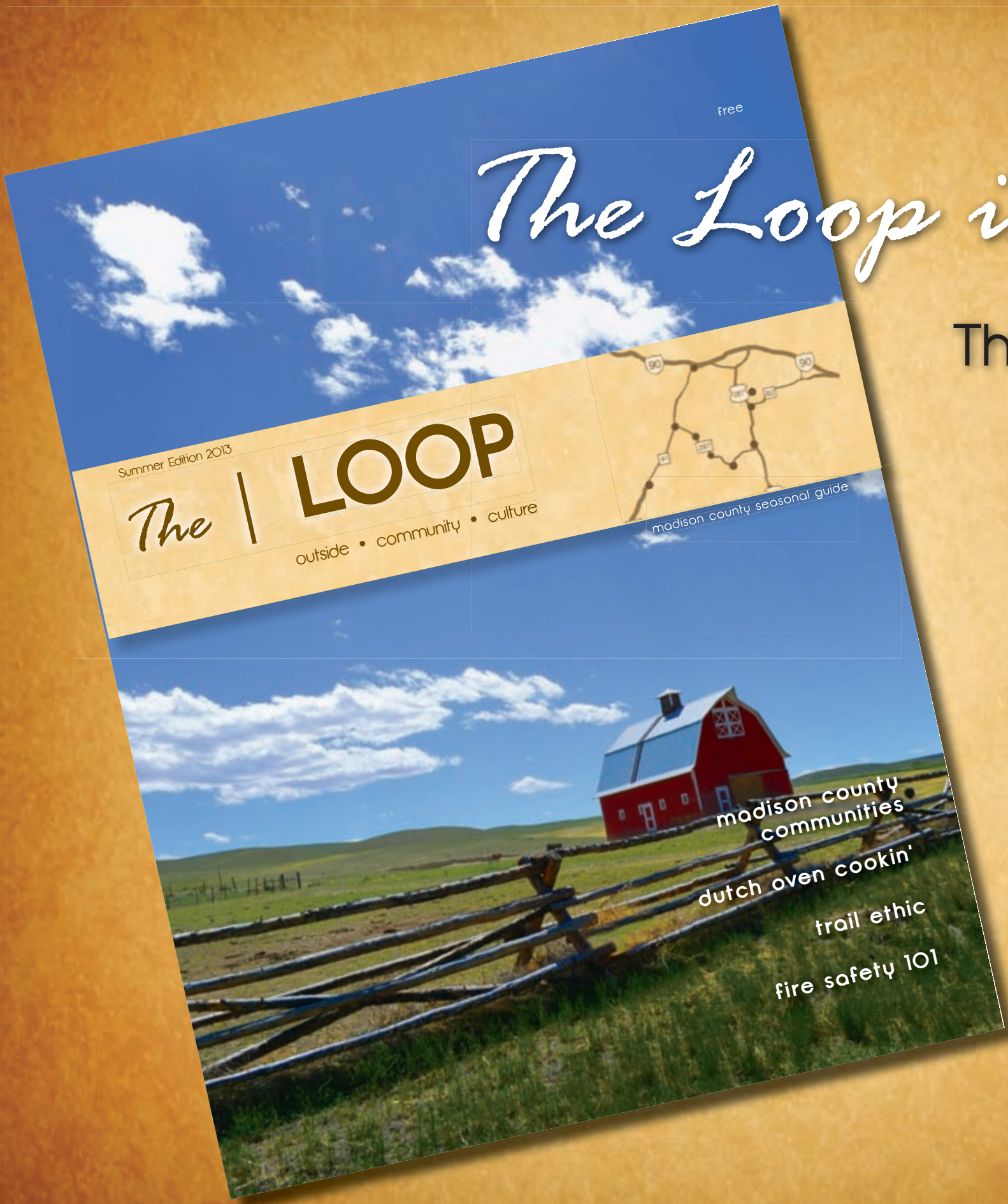
Scramble Format - 18 holes!

Open to Everyone!

Fundraiser for Patrick Stoltz, PGA Professional

\$65.00 Entry Fee includes Pin Prizes, Team Prizes, Green Fees, Cart, Lunch at the Turn and Fun! Come and Play Golf with us and help us remember our great friend Hulen Coker!

**Sign up in the Pro Shop 682-7468
 Sign up early to reserve a spot!**



The Loop is here!

Get yours at
The Madisionian
and other
area
vendors!

682-7755

ENNIS CONTINUING EDUCATION *Upcoming* SUMMER COURSES

COURSE DESCRIPTIONS

Pickleball: (A lively racket game for all ages and abilities)
Pickleball was originally invented as a backyard pastime and has now evolved into an organized sport represented by national and international governing bodies. It is very similar to tennis, badminton and table tennis. There are key differences that make pickleball accessible to a wider range of players, particularly seniors. This smaller court along with a slower moving ball makes it a much easier sport to play than tennis. All equipment will be provided.

Intermediate Yoga Flow:
Yoga flow will be a more active class. The pace is a bit faster between postures while remaining focused on syncing the breath with the movement. More challenging postures and their preparatory poses will be covered. Some prior yoga experience is recommended.

Basic Yoga:
This class will focus on the basics of alignment and

muscle engagement in beginner yoga postures. The pace of the class will be slower with lots of opportunity to connect with the breath. This class is suitable for all levels, ideal for the beginner.

Comparative Religions of the World:
What are the major religions of the world? How are they alike? How are they different? What about the Founders? Are there similarities? If so, what are they? What about the followers? How faithful are they to what the Founders taught? In what ways do their practices reflect the teachings of the Founders? How do they differ? If any of these questions interest you, come to our workshops. The first will be on Thursday, June 20th at 1:00pm. Be prepared to ask more questions.

Training for Your First 5k Walk/Run:
Have you wanted to compete in a 5 kilometer race but weren't quite sure how to get started? Join this 8 week training course and train at your own speed but with a supportive team to pump you up! We'll

meet at least weekly to report in, set new goals for running/walking homework, share favorite routes, and chat about fitness. End the course with a bang by competing in the 4th Annual Run the Big Hole on Saturday, August 17th. See www.runmt.com for more details.

Discovering My Written Voice: Exploring & Creating the Short Story:
Students enrolled in "Discovering My Written Voice" will learn the basics of the short story. With special attention to character development, plot development, and effective dialogue development, this class will focus on writing, reading, and critiquing short stories. Students will read and discuss pieces from some of the world's greatest story-tellers. Through analytical discourse we will all become aware of what makes a story worth reading. Then we can apply this new-found confidence to the construction our own masterpieces. If you have ever wanted to be, or thought you could be, a writer, this class is for you!

LOCATIONS/DATES/TIMES

PICKLEBALL | Tuesday's & Thursday's starting 6/11 through 7/25 | 7:00pm | HS parking lot

ADULT OPEN GYM | Wednesday evening starting 6/12 | 7-9pm | HS gym

COMPARATIVE RELIGIONS OF THE WORLD | Thursday, June 20th & Thursday, June 27th | 1:00pm

GEOLOGY FIELD TRIP | Sunday, June 23rd | 9:00 am (restricted to Winter & Spring Students)

INTERMEDIATE FLOW YOGA | Tuesdays, June 18 & 25th, July 2 and Tuesdays, July 16th, 23rd, 30th | 5:15-6:30 pm | Commons Room

BASIC YOGA | Thursdays, June 20th & 27th, Tuesday July 2 and Thursdays, July 18th, 25th, and August 1st | 4:15-5:30 pm |

Commons Room

RUN/WALK YOUR FIRST 5K | Thursdays beginning June 27th -Race Day ~Saturday, August 17th in the Big Hole Valley | 8:30 -10:00 am | High School Track

DISCOVERING MY WRITTEN VOICE: EXPLORING & CREATING THE SHORT STORY | Wednesdays beginning June 26th through July 24th | 6:00-7:30 pm | High School Room

PAINTING: MAKE IT PERSONAL - PLEIN AIR PAINTING | Tuesday, July 16th | 9:00 am til 3:00 pm | Ennis Lions Club Park

GOLD PANNING | Saturday, July 20th | 9:00am or 1:00pm

COMMUNITY BAND | Monday's | 7:00pm | Performances June 12, July 4, and August 10



Registration Form

Please print and fill out form completely. Incomplete forms will not be processed.

Name: _____

Mailing Address: _____

Home Phone: _____ Alternate Phone: _____

E-mail Address: _____

Course Title #1: _____

Course Title #2: _____

Check # and Amount _____

Please make checks payable to: Ennis High School, c/o ECE Program, PO BOX 517, Ennis, MT 59729

1. Select the course(s) you would like to take
2. Fill out the registration form above
3. Mail it and a personal check (\$20/class) to the school OR simply provide both to your instructor at your first class session.

682-4258 • WWW.ENNIS-ECE.ORG



Local galleries join forces for annual gallery walk

Submitted by Peggy Giblin

Please join us for our first 2013 Ennis Gallery Walk on Friday, June 21, from 5-8 p.m.

Experience the vibrant art scene of Ennis! We invite you to visit our distinctive galleries and studios, enjoy refreshments and meet our featured artists and artisans. Come join the fun! The following galleries will be participating:

The Maydak Gallery is open again and we are looking

forward to our fifth year in Ennis.

The owner, Michael Maydak, has been chosen once again to be the featured artist for the fly fishing festival in September. Come and see the painting made for the poster, which will be auctioned off at the end of the festival.

This year we are happy to also feature Carleton McCambridge, a local western artist, and Dennis Boyd, a landscape painter from Billings.

We also have Mitch Billis, a renowned sculptor from Bozeman, and Penny Hall, a local gifted leather artist who designs beautiful sculptured bowls. Linda Newhouse, partner of the Maydak Gallery, is also showing paintings and hand-made jewelry. Please stop by and visit. 129 E. Main St. (530) 906-2705.

Shanna Mae Photography: Come on down to Shanna Mae Photography's photo gallery to enjoy food and drinks

while viewing photographs from around Montana. Photos feature Montana's scenic landscapes and wildlife, cowboys and horses and scenes from South America.

Also in the gallery we are exclusively featuring Karry L's gorgeous and colorful painted canvases all summer. So come on down to meet the artist and view her fantastic work at 123 E. Main St. (406) 600-7085.

The Cattleman Gallery of Western Art invites you to

join us for refreshments, live cowboy music and poetry, and view the gallery's collection of fine art including works by local artists Sandra Alger, Carleton McCambridge, and limited edition giclees by the late Larry Zabel. Also works by our posse of cowboy artists including Chris Owen, Bill Anton, Tim Cox, Andy Thomas and others will be featured.

We are also featuring beautiful handcrafted wood tables and accessories by

Montana craftsmen Steve Simonson and Joe Gillispie, fine western bronze sculpture by the late James Knight, deerskin creations by Peggy Giblin, many rare, antique western prints, cowboy collectibles and Frank Giblin's fine custom framing.

We are located at 413 W. Main St./Hwy 287 (across from the rodeo grounds) (406) 682-5775.

Rikki Dilschneider

Broker, Prudential MT Real Estate
123 E Main Street | Ennis, MT 59729
406-581-5155 | www.prumt.com

VALLEY GARDEN GOLF VILLAGE
These homes are under contract.

Will yours be next?



2 Madison Drive, Ennis • MLS 188389 • \$229,000



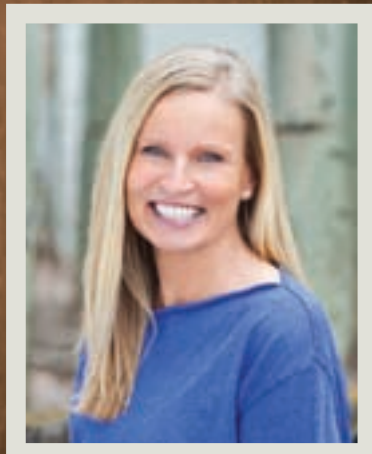
3 Madison Drive, Ennis • MLS 184946 • \$269,000

Call me to schedule a listing appointment!

Rikki Dilschneider
406-581-5155
rikki.dilschneider@prumt.com



Prudential
Montana Real Estate



Reading slated for new book at Elling House Arts and Humanities Center

Submitted by Toni James

The Elling House Arts & Humanities Center is very pleased to present Gary Forney reading from his new book, "Dawn in El Dorado: The Early Mining Camps and Settlement of Montana Territory," Friday, June 21 at 7 p.m.

The discovery of gold in the Alder Gulch in May of 1863 not only created prodigious wealth, but terrible violence, turbulent political battles, and attracted waves of immigrants from virtually every state – dozens of countries – and all walks of life. Ennis area resident Gary

R. Forney is the author of the recently published book titled "Dawn in El Dorado: The Early Mining Camps and Settlement of Montana Territory." The book chronicles the tragedies, intrigues, and some of the colorful characters that shaped the formative years of the Montana Territory.

As we approach the Sesquicentennial of the Montana Territory, it is an especially appropriate time to look back at Montana's dawning years: "This was a time when the communities and institutions which would form Montana were awakening, and a time when Civil War and subsequent

battles of Reconstruction were reforming the United States."

Dawn in El Dorado is available in soft and hard cover editions.

Forney has written several articles and previously published three works on early Montana history: Thomas Francis Meagher: Irish Patriot, American Yankee, Montana Pioneer; Discovery Men; and It Takes All Kinds: Stories from Virginia City.

The Elling House is located at the upper end of East Idaho Street, up the hill from the Virginia City Fire Dept. Admission is by donation and is open to the public.

Q4 honor roll for Ennis High School

- | | | |
|--------------------|-------------------|--------------------|
| Dallas Babcock | William Goodman | Muhammad Nizamani |
| Kyler Barney | Taylor Green | Tucker Ott |
| Tieryn Bills | Brooke Griffis | Madison Owens |
| Dalton Bullock | Kacee Griffis | Race Owens |
| Colten Clark | Taylor Gustin | Kathleen Philpott |
| Kaylee Clemmons | Madaline Hagl | Kailey Pierce |
| Levi Coder | Justin Hubbard | Jack Reed |
| Kayla Coffman | Shelbi Hubbard | Kelsie Roberts |
| Brady Cornett | Emily Huffield | Kathryn Schabarker |
| Trevor Wylie Cross | Taylor Jensen | Julie Schaufler |
| Cole Crowley | Chad Johnerson | Coleton Shand |
| Brady Croy | Samantha Kimmey | Taylor Sitz |
| Taylor Davis | Austin Kimmey | Matthew Skillman |
| Madisen Diebert | Caitlin Klatt | Gabriel Snider |
| Kortney Dietz | Wylie Leo | Connor Sullivan |
| Kyler Elliott | Nacole Martello | Natalea Totten |
| Kamilla Fairushina | Chelsea Martello | Stephanie Weddle |
| Reid Farnes | Rylee McKinney | Samantha Welch |
| Troy Fortner | Braydon McKitrick | Derek Wham |
| Jahna France | Walker McKitrick | Dustin Wham |
| Cassandra Frye | Delaney McNally | Amber Yates |
| Madison Galloup | MaKenzie Moen | MicKayla Yochim |
| McKenzie Galloup | Haley Nestegard | |
| Carina Garcia | Austin Newman | |

Joelle's

Congratulations to our grand prize winners:
Maria & Margot!

- collectibles
- antique furnishings
- botanicals
- organic spices
- aromatherapy
- clothing



Uniquely located T&E Storage at 287 & Madison Ave, Ennis • 596-0338 or 580-0109

Something to remember....

The Madisonian has changed its ad copy /order and submitted news/ letters deadline to Fridays at 5 p.m.

Thank you! The Madisonian Staff



COLUMNS

HOLLOWTOP SMOKE SIGNALS

By Art Kehler FOR THE MADISONIAN

Balanced Perspectives

Factors to consider during the annual surge of visitors

Warm weather has arrived and the tri-cities (Harrison, Pony, Norris) area is teeming with out-of-state vacationers. Obviously, this isn't the preferred time of year for residents who consider the region to be grossly overpopulated. At the same time, it's helpful to bear in mind that many summer vacationers envision our locality as a sparsely settled boondocks. Such divergent conceptions can lead to misunderstandings. Hence, in an effort to advance resident/visitor camaraderie, I feel compelled to offer the following balanced perspectives.

To begin, someone needs to inform portly male tourists with chicken legs they just don't look good in flaming red shorts. At the same time, it's only fair to concede that tourists have valid cause to stare at the distended lower lips of local snuff chewers. Furthermore, there's no call for excessive chewer's indignation when asked if said abnormality is a genetic mutation. After all, it may be a legitimate expression of concern.

Admittedly, Harrison residents do get spoiled during the slow-paced winter months. Consequently, summer visitors should strive to understand the angst townsfolk suffer when forced to stand in a line of more than two people at the grocery store. Then again, townsfolk should consider that, for many travelers, having to use a battery-powered shaver twice while standing in an urban Wal-Mart checkout line is customary. As well, there's the annual strife that arises when a regular stops at the town's cafe and discovers an outsider occupying "his/her" seat. At such traumatic moments, it's crucial to grasp that the nonresident offender is blissfully unaware of his/her breach of village etiquette. On the other hand, when attempting to strike up a conversation with the ousted resident, the outsider needs to realize that the question—"What's new in Harrison?"--isn't likely to spark protracted discussion.

Once again, Pony drivers will need to be alert for tourists,

strolling four-abreast up the Pony Road, firmly convinced it's a paved cow path. Still, when exposed to sweeping scenery, it is quite accepted for habitually cramped city dwellers to exhibit curious behavior. Additionally, Pony hikers need to be sympathetic when reminding blue-faced, flatlanders that, at 8,543 ft. elevation, Hollowtop Lake is not an ideal environment in which to practice one's backstroke.

No doubt the citizens of Norris will be most radically impacted. The sad truth is there will be summer days when the number of travelers parked at the town's gas station exceeds the metropolitan population. But then, with all those extra people around, the town's mosquitoes may choose from a vastly larger pool of victims. Also, sharing sob stories with travelers about the price of gas may provide a compensating level of interstate bonding.



Art Kehler

Moreover, area drivers on the road between Norris and Harrison better be on guard when approaching those dips in the road that can't be seen until one is upon them. All too often, an out-of-state car may be found stopped in the middle of the traffic lane. After screeching to an exhilarating stop, the dismayed locals will likely discover the starry-eyed occupants ogling (what is to them) an exotic buck antelope. Rather than succumb to base emotions, those fortunate residents should recognize the splendid opportunity at hand to demonstrate our legendary cordiality.

In sum, here's hoping the above balanced perspectives promote a mutual spirit of broadmindedness during the annual surge of visitors. With luck, visitors will experience our culture (such as it is) and tri-cities' residents will receive desperately desired news from the outside world. Sounds fair to me.

Art lives in Harrison, Montana. His essays, stories and poetry, have been published in regional newspapers and literary magazines.



AROUND THE WOOD STOVE

by Gail Banks

Woke up this morning early to my grandson Gus crawling across my bed, with the biggest smile on his face, asking me "gramm, can I get in bed with you?" I have decided to list that moment in one of "life's best list!" I can confess though that a smiling child has just got me!

I so love the quote, "One hundred years from now, it won't matter what car I drove, what kind of house I lived in, how much I had in my bank account, nor what my clothes looked like. But, the world may be a little better, because I was important in the

life of a child." It says so much. I liked the quote enough that we put in on a sign that stands at the children's ABC (Aubrey Brooksle Corner) playground at the Madison County Fair grounds in Twin Bridges.

My good friend Gerry Mooney called me this week, he is back home in Montana, from wintering in the warmer weather and visiting family. I had to laugh at Gerry telling me a story that the first week he is back home in Montana. He wakes up to a bear looking into his windows of his home. To make matters worse, when he tries to knock on the windows and scare the bear away, the bear stands up and bites at the window. Not good. There is a FWP bear trap in Gerry's yard now, waiting for Mr. Bear to return hungry. I asked Gerry if he got a picture of the bear biting at his hand on the other side of the window, and he told me taking a picture was the last thing on his mind!

I wanted to share Joe Fouts address at his home, for those wanting to send cards or letters: Joe Fouts, 329 33rd. Ave. West. Laurel, MT 59044. But you know

I might add, that his sister Donna Lee Waylett who lives in Dillon, is really taking Joe's illness hard. If you know Donna and Joe, a little note of encouragement to Donna would certainly be nice also. Donna and Joe were raised in Waterloo, their home place is where Lori Harshbarger has her law firm now days. Donna taught at the Twin Bridges School for a long time, now teaching in Dillon.

What is so sad in this ole' world, is that there are so many families just like the Fouts family, fighting cancer. It may be different cancers, different circumstances, but it is still the same fight.

Cancer affects everyone, and it's up to all of us to support the important research that can one day make a much sought-after cure a reality.

One thing about cancer is that it forces you to focus, to prioritize and you learn what's important. I mean, it is like don't sweat the small stuff. I used to get angry with stupid drivers, rude clerks, etc. It's not worth it. Get that in your head! When somebody says to you "You have cancer," you realize all the rest is

small stuff. So what have we learned this week? Every flower must grow though dirt. Good things come to those who wait. No, good things come to those who work their butts off and never give up! One good friend is better than ten bad ones. Count your rainbows not your thunderstorms. The Pity Train just derailed at the intersection of suck it up and get over it!

It's the middle of June already. I'm off to a transportation meeting next week for a couple days. These meetings are always interesting. After the news story that broke last week on some Montana schools not doing background checks on their bus drivers and an audit found over 50 active school bus drivers in the state with "not so good" of items in their back-grounds, I would imagine that background checks will certainly be high on the agenda. I even get a service award at this convention for 26 years of driving school bus.

"Silence is golden! Unless you have kids, then silence is very suspicious!"

NATURAL Resource News

Rebecca Ramsey RUBY WATERSHED COORDINATOR

FENCING: Making it both functional and friendly for both you and your neighbors

Across Montana, fences have become necessary for many reasons ranging from defining property boundaries, to controlling livestock and trespassing. Our necessary fences can also create hazards for wildlife including big game animals and birds. As animals migrate seasonally or seek access to forage and water, animals often collide with or become entangled in fences causing injury and death as well as costly fence damage which is frustrating to landowners.

However, not all fences are problematic. By keeping wildlife in mind, landowners

can tailor fence design and placement to reduce injuries, fatalities and fence damage. Existing fences may also be modified in trouble spots to allow wildlife to move freely through important habitats, while still containing livestock.

Keep in mind, open habitat with no fences at all is always ideal – both to your viewshed, and to the wildlife. So wherever possible, remove fences that are no longer needed, in states of disrepair, or are otherwise obsolete. And, where you need to fence, fewer fences are better. To get started, consider your needs:

- What is the purpose of the fence? - For instance, is it to enclose pets or livestock, deter trespass or mark boundaries? The purpose should help determine design and placement.

- What is the topography? Are you fencing on hills, in soils where posts cannot be driven, near live water or wetlands? You'll want to design fence to avoid creating traps for wildlife.

- What wildlife species frequent your property? You will want to talk to your local wildlife biologist to find out and then build fences that allow negotiation by both young and adult animals.

- What are daily or seasonal habits of wildlife on your property? Again, a moment with your local biologists can help here, as you will want to know if animals are calving or nesting nearby or migrating through for seasonal feeding or breeding.

Some of the most encumbered species we see here in Madison County are the ungulates – moose, deer, elk, pronghorn and mountain sheep. They can jump fences, but often the top wire or rail is too high, especially in winter when their energy levels are depleted. Or, woven wire fences block the fawns and calves from being able to follow adults who may be able to jump over the barriers. Woven wire is also an obstruction for other animals that cannot jump over, such as bears or bobcats, and pronghorn

that typically go under wire fences. Additionally, birds (like the Sage Grouse) are often victims of fence collision and entanglement. Consider modifying your existing fences by:

- Lowering the top strand of barbed wire and raising the bottom wire.

- Replace top barbed wires with rail or smooth wire.

- Temporarily lay down sections of fence during seasonal migrations or when livestock are not present.

- Modify sections of existing fence in areas of wildlife movement or migration so top and bottom rails or wires can be temporarily lowered or raised.

- Attach short pieces of white vinyl siding strips to fence wires in areas where wildlife collisions or entanglements are common.

- Use electric fence as a way to keep livestock in place while allowing wildlife to move freely.

In 2012, Montana Fish, Wildlife & Parks (FWP) revised and updated their publication entitled "A Landowner's Guide to Wildlife Friendly Fences: How to Build Fence with Wildlife in Mind." Much of the information here came from that document. You can contact any Montana FWP office or employee to get the print version of this informative piece, or you can go to fwp.mt.gov and read or download the entire 56-page publication, for further detailed information.

CommodityInsite.com

Four Most Expensive Word in the English Language

By Jerry Welch FOR THE MADISONIAN

A few weeks ago, I was so concerned regarding the precarious state of the stock and commodity markets that my column ended on this note of warning.

"Between the Hindenburg Omen, the advent of high frequency trading and the weakening of most commodity markets, I am preparing myself for something I have never before seen. A June Swoon."

However, a general weakening of stocks and commodities has not yet and may not be seen even though June has nearly run its course. The reason the markets continue to defy my forecast is because the bulls argue the old rules of valuation no longer apply because this time it's different.

Be that as it may but from the lips of Sir John Templeton, legendary investor turned philanthropist who died in 2008 at 95 years of age comes this quote. "The four most expensive words in the English language are: 'This time it's different.'"

Mr. Templeton was a contrarian investor, casually defined as one who buys when others are selling. Or, sells when others are buying.

A few days ago, The Wall Street Journal in a column titled "Money Beat" and had this to say about the Hindenburg Omen. "The much-ballyhooped

Hindenburg Omen has generated plenty of criticism over the years. But a deeper dive into the data this time around suggests there may be more to worry now about than many analysts are letting on to believe."

"Jason Goepfert, founder of Sundial Capital Research and author of the SentimenTrader Daily Report, said there have been a cluster of five Hindenburg Omens over the past few weeks. As a student of investor psychology and sentiment trends, he's worried about what potentially lies ahead.

"That's a heavy concentration that we haven't seen too many other times over a span of nearly 50 years," Goepfert wrote in his Monday report. "And when we have, it hasn't been good."

A day after the WSJ article was written, Market Watch weighed in on the subject with these comments. "The 'Hindenburg Omen' isn't a mid-1970s movie mash-up where a pint-sized Antichrist causes a Zeppelin to explode. Rather, it's a mash-up of technical indicators that's meant to signal a high probability that the stock market will crash and burn."

But Market Watch was fair and balanced, quick to point out opposing views stating, "The Hindenburg Omen (HO), however, has garnered a fair

amount of savage criticism. While the HO preceded market downturns in 2008 and 1987, critics point out that stock market declines occurred only 25 percent of the time after conditions of the HO were met. Chief Investment Officer Adam Grimes at Waverly Advisors called the HO 'an example of the worst kind of 'technical analysis'—a market signal essentially designed for media sound bites,' in emailed comment Monday."

Reading the article published in Market Watch and I kept looking for those famous four words that spilled from Sir John Templeton's lips years ago, "This time it's different." But as I read and reread the article, those words were nowhere to be found. Unless, of course, you read between the lines as I did.

Thru this week, the Dow Jones continues to do well even though global stocks have slipped to a seven-week low. The stock markets in Japan and Hong Kong have declined enough to where they are now pegged as bear markets by most analysts. From late May, global stocks are down 5.3 percent with worries building that the world's central banks cannot keep their stimulus programs in place forever. Nonetheless, analysts on Wall Street contend that what goes on in Japan and

Hong Kong and with world's central banks will have little if any impact on the US stock and commodity markets because this time it's different.

What is going on with hedge fund involvement in the commodity markets is certainly different than anything seen in years. After a disastrous bet on corn futures in March, hedge funds are in full retreat from holding net long positions in U.S. traded agricultural commodities. In April, for instance, total hedge fund positions in the ag markets fell to the lowest levels since 2006. A serious change in hedge fund behavior seems to be underway.

Agri Money recently commented on the change in attitudes by hedge funds.

"A withdrawal would be consistent with hedge funds'

declining profitability from crop positions. Commodity hedge funds recorded negative performances in both 2011 and 2012, disappointing investors who withdrew about 20% of their cash last year." And that is a perfectly logical explanation why the hedge funds are retreating from the commodity markets at full speed.

Currently, the divergence between the stock and commodity markets is the most pronounced in 16 years. Stocks or shares are essentially moving higher while commodities per se are flat to moving lower. In the world of commodities, the weak link are the U.S. Agricultural markets. My great worry moving forward is this. If the ag markets cannot rise as they have done in the past when stocks are trending upward, what happens

if stocks or shares suddenly turn lower?

Investors and agricultural producers are rattled because of the recent increase of market volatility with stocks, bonds, currencies and commodities. The Japanese stock market, the Nikkei 225 for instance, has lost 20% in less than a month. Last month, US bond endured their worst decline in 4 years. Investing is no longer for the faint of heart.

Market participants are worried about future Fed policy and just as important, concerned about the intentions of the world central banks. The increase in market volatility amid choppy performance hints loudly that at the very least, rough period lies ahead. Possibly, a very rough period. Unless, of course, this time it's different.

contact susanne at s.hill@madisoniannews.com

Get Results.

Bale of Hay Saloon
White Trash Karaoke
Sat June 22 9pm
 Virginia City's Finest Watering Hole
www.baleofhaysaloon.com

Sustainably Sadie

Sarah Miller
FOR THE MADISONIAN

Wear Sunscreen

Summer is finally here (at this exact moment, outside my window it is a downpour and the water running down the streets reminds me of living up in V.C. and watching the water rush down the streets and gulch!) Thursday, June 20, is the Summer Solstice, the longest day of the year, and one tip I'd like to start out summer with is wear sunscreen!

When I was younger I would

skip the sunscreen, after that initial burn the skin turns that perfect brown. But the reality is that too much sun damages the skin. In order to keep the body looking youthful, it is necessary to protect yourself. Sunburn is hard on the skin and after healing what you will be left with is scarred to some degree. With the kiddos, I am chasing the older kids around the yard with the spray sunscreen and then

just always trying to keep the 6-month-old in the shade (away from mosquitoes).

I know it does get expensive. When I started to stock up on sunscreen for the summer, I found myself using \$1 off coupons on \$8 a bottle or higher products. It seems that end-caps and 2-pack offers are the best deal for purchasing frugally. As the summer speeds by, the price of sunscreen should drop. I think you could stock up at the end of this summer to save for next year, and for those warm winter days we get.

I keep sunscreen by the door, in the car and with the stroller. I would do anything to save my kids from hurt, so even though they wiggle and complain, I spray them down and wipe sunscreen on their faces (carefully attempting to keep it out of their eyes and mouth). Anything less than 15 SPF is worthless in terms of protection.

There are natural make-up products that contain minerals that provide protection.

And you can search the web for DIY sunscreens that are made out of oils, beeswax and zinc oxide. Putting sunscreen on tattoos preserves your ink. Take the time to protect your skin.

Twin Bits

The next TBCA meeting will be at Noon at the Ruby Valley National Bank in Twin Bridges, Wednesday, June 26.

Twin Bridges Farmers' Market Saturdays, 9 a.m. to noon, Twin Bridges Main Street Park.

Sheridan Farmers' Market begins Thursday, June 6, 4 pm to 6 pm at Sheridan's Main Street Park.

Floating Flotillas and Fish Fantasies will be Saturday, July 27, at the Madison County Fairgrounds in Twin Bridges.

Join us on Facebook!
 and be the first to get breaking news.
facebook.com/madisonian

Thank You!

A very special thank you to the following individuals and businesses that helped make the Earl Holt/John Seaman Memorial Poker Tournament a success! You helped raise \$5218 for Ennis students!

VENUE SPONSOR Sportsman's Lodge	Nimble Nannies Shedhorn Sports Sportsman's Lodge Tavmania Mall Gift Shop Trenz [Debbie Coffman and Tanya Fortner]
TABLE SPONSORS Bill's Painting Service Col's Paw Card Room Croy Construction Inc. First Madison Valley Bank MDM Construction Rikki Dilschneider, PRUMT Triple S Electric Wickup Builders	FOOD Sportsman's Lodge Sharon Gecho Wanda Skinner Alicia Lingle Roberta Maxwell PIC-A-NIC Basket
PRIZE DONATIONS American Land and Title Bill's Painting Service Ennis True Value King Three Card Room	CASH DONATIONS Jim Hart John Scully

Scholarship fundraiser successful

Submitted by Ross Lingle

The Earl Holt and John Seaman Memorial Scholarship funds raised \$5,218 at the annual Texas Hold'em charity tournament. The Earl Holt Memorial Scholarship for student-athletes was awarded to TUCKER OTT (\$1000) and MADISON OWENS (\$1000). The John Seaman Memorial Scholarship was awarded to BRADY CROY (\$1000), CASSIE FRYE (\$500) and KACEE GRIFFIS (\$500). Each of the recipients will receive the funds next fall toward their university education. Congratulations and good luck to these exceptional individuals!

The charity poker tournament was held at the Sportsman's Lodge with results

as follows:

First Place- Wanda Skinner, Second Place- Gary Croy, Third Place- Tracy Vetter, and Fourth Place- Brandon Malesich. Thank you to all 42 players who contributed to the scholarship funds. The tournament will take place again next March at the Sportsman's Lodge. Special thanks to Wanda and Bill



John Seaman Memorial Scholarship Recipients: Cassie Frye, Brady Croy and Kacee Griffis



Earl Holt Memorial Scholarship Recipients: Madison Owens and Tucker Ott

Skinner for planning the fundraiser! For a list of all the individuals and businesses that contributed, please see the

thank you advertisement listed in this week's edition of the Madisonian.

KENWORTHY ELECTRIC INC.

 Ph. (406)842.5865 Fax (406)842.7373
DAN KENWORTHY
kenworthyelectric.com
 P.O. Box 56 | Sheridan, MT | 59749
Serving all of Madison County

KEEP-YOU-IN-STITCHES
 JAN WOOD
 Clothing Alterations
 Custom Sewing
 682-7824 600-2518

COMPUTER+HELP
 • Networking
 • Troubleshooting
 • Repair
 Peter Rogstad
 406-682-5403 • ennis1@3rivers.net

DRIVERS:
 4 Local runs with occasional layovers!
 Average \$52,000/yr plus!
 Excellent Benefits!
 Paid Vacations!
 Employee Safety Bonus Plan!
 CDL-A, 1yr. Exp. Req.
 Estenson Logistics.
 Apply: www.goelc.com
 1-866-336-9642

Ennis Meals on Wheels
 Thursday, June 20 - Chicken and noodles, carrots, peas, pears and cheese salad, bread, cake
 Friday, June 21 - BUFFET
 Tuesday, June 25 - Hamburger & noodles, tomatoes, peas, pickled beets, bread, danish roll
 Wednesday, June 26 - Spare ribs and sauerkraut, potatoes, green beans, sliced tomatoes, bread, poached pears
 Ennis Town Hall. Tuesday - Friday at NOON.
 We ask a \$4 minimum donation for meals.
 On Fridays you can take what is left over home (bring your own containers). All meals are subject to change without notice.
 Please call 682-4550 for questions or to request delivery.

Vennis Over The Hill Unity Group
 Faced with a drinking problem?
 Perhaps Alcoholics Anonymous Can Help.
 SUZAN - 10 a.m., No Smoking,
 Virginia City Library
 MON. - Open, 7 p.m., Basement of
 M.V. Presbyterian Church, No Smoking
 WED. - Closed, 7:30 p.m., Trinity Church
 FRI. - Open, 8 p.m., Basement of
 M.V. Presbyterian Church, No Smoking
 682-3490, 682-7023 Ennis
 843-5352 Virginia City

ENNIS ALANON
 Monday - 10:45 a.m.
 Basement of Madison Valley
 Presbyterian Church, Ennis
 Hugel & Charles
 CALL 682-5097 or 682-7023

"Keep it Simple."
A.A. MEETING
 Bethany Hall, Sheridan
 (behind Methodist Church)
 Wednesdays ~ 8 p.m.

ALANON
 Twin Bridges • Church of the Valley
 Thursdays, 8 pm

ALCOHOLICS ANONYMOUS
 Meeting Every Thurs. at
 8 p.m., Church of the
 Valley, Twin Bridges
ALANON MEETING
 Same Time - Same Place

ACA Meeting
 12-step program for
 Adult Children of Alcoholics
 Bethany Hall-Sheridan | Weds 7 pm

Cryptoquip Answer:
 BOUNCY TUNE ABOUT A
 CASUAL COTTON SHIRT
 THAT CAN BE WORN BY A
 PAIR OF PEOPLE: "TEE FOR
 TWO."

C	L	O	T	O	P	T	S	B	A	D	
A	I	D	E	N	O	A	H	A	G	E	
F	R	O	N	T	L	I	N	E	C	U	B
E	A	R	T	H	Y	M	A	K	E	S	
H	E	A	P	P	L	Y					
R	I	B	A	M	O	O	L	A	S	S	
I	R	A	A	R	T	R	E	P			
P	E	C	K	I	T	S	O	D	A	Y	
K	A	R	M	A	P	I					
B	O	W	I	E	K	I	N	D	E	R	
O	P	A	F	R	O	N	T	N	I	N	E
B	A	R	E	I	R	E	R	I	N		
O	L	D	R	O	B	E	R	E	D	O	

Madison Valley History Association news

Submitted by Shirley Love
 FOR THE MADISON VALLEY
 HISTORY ASSOCIATION

The June meeting of the MVHA is Thursday, June 20, at the 4 p.m. in the downstairs meeting room of the First Madison Valley Bank. After a short business meeting, Gary Forney, MVHA member, local historian and author,

will present his recently published book "Dawn in El Dorado: The Early Mining Camps and Settlement of the Montana Territory." After the presentation, Gary will have copies of the book available for purchase and will autograph them if so desired.

After the meeting and program, around 6:30 p.m., the MVHA will have a social

thank you advertisement listed in this week's edition of the Madisonian.

Biggest and best Fourth of July BBQ

By Bill Mercer

Annual Ennis Lions Club BBQ will be immediately following the July 4th Parade at the Peter T Park on Main Street. If you don't see us just follow your nose to an old

fashioned BBQ. The club will be featuring Charcoal cooked hamburgers and hotdogs with all the trimmings. Potato salad, baked beans and watermelon will complete the menu. All you locals bring your family, friends and guests and enjoy

some great food while setting in the shade of the cottonwood trees on bales of straw. We will also have tables and chairs for your convenience. It's just another great Lions Club fundraiser that helps the people of our community.

"Vigilantes, Freemasons, and Gold Rush Justice in Montana Territory"

Submitted by Tom Lowe

Bannack State Park will host the Humanities Montana Speakers Bureau program "Vigilantes, Freemasons, and Gold Rush Justice in Montana Territory" with Patrick Danahy on June 22 at 2 p.m. in the old church at Bannack.

Just before Christmas 1963, in Virginia City, Montana Territory, twenty-four men, many of them Masons, pledged themselves and their sacred honor to form a secret Vigilance Committee "for the laudable purpose of arresting thieves

and murderers and to recover stolen property...so help us God."

In the first few weeks they hanged a dozen men including Sheriff Henry Plumer. Before the Vigilance Committee returned justice to a stable government, 57 men were arrested, tried and hanged. Patrick Danahy brings to life poignant and entertaining stories gleaned from diaries, memoirs and newspapers of the women and men who tamed Montana, miners, Masons, politicians, Hurdy Gurdy girls, wives and villains. Patrick Danahy is an independent scholar

on Montana vigilantes, freemasonry, history and mythology.

What: "Vigilantes, Freemasons, and Gold Rush Justice in Montana Territory"
 When: Saturday June 22 at 2 p.m.

Where: The old church in Bannack

Who: Patrick Danahy

Visit Montana State Parks (stateparks.mt.gov) and enjoy camping, hiking, fishing, swimming, boating and more and discover some of the greatest natural and cultural treasures on earth.

Join us to celebrate
THE GOLDEN 50TH WEDDING ANNIVERSARY
 of **DARNELL & GWEN GODFREY**

June 22 • 12 NOON
Jefferson Building,
Madison County
Fairgrounds

BBQ and
gathering
of friends

Get Results.
 advertise in
 The Madisonian
 406-682-7755

If you ever wanted a fine hand-knotted Oriental Rug this is your chance!

MONTANA RUGS IS GOING OUT OF BUSINESS.

The building is sold. ALL INVENTORY MUST BE SOLD.



ORIENTAL RUG AUCTION

586-8491

Auction held at our store off HUFFINE LANE.
1.5 miles east of Four Corners

586-8491

FRI. 21

SAT. 22

SUN. 23

MON. 24

6 PM - 9 PM

2 PM - 5 PM

2 PM - 5 PM

6 PM - 9 PM

(Previews one hour before auction time)

ALL RUGS MUST SELL. ALL SALES ARE FINAL. (10% BUYERS PREMIUM.)

WIN ME!!

A drawing for an 5' x 8' rug will be held at each auction Friday, Saturday, Sunday. Receive one ticket at the door. Get an additional three tickets by Pre-Registering for the auction. Must be present to win.

Seating is limited so we encourage you to **PRE-REGISTER** by calling 406.586.8491.

UPON REGISTERING YOU WILL RECEIVE THREE TICKETS FOR A CHANCE TO WIN ONE OF THREE 5'x8' FINE ORIENTAL RUGS VALUED AT \$3,000 EACH.

One ticket at the door • Must be present to win



Montana Rugs
IMPORTER OF FINE WOOL RUGS

586-8491

Auctioneers:
Michael Abdalla Jr. & Sr. CAI



The Montana Heritage Commission invites you to come celebrate the 150th anniversary of Virginia City.

RESISTING CHANGE SINCE 1863!



Some folks made a fortune here...
But what they left behind is priceless.

All of Montana has the deepest pride and affection for Virginia City. No more colorful pioneer mining camp ever existed. Dramatic tales of the early days in this vicinity are legion. Rich placer diggings were discovered in Alder Gulch in the

spring of 1863 and the stampede of gold seekers and their parasites was on! Sluices soon lined the gulch and various "cities" blossomed forth as trading and amusement centers for free-handed miners. Virginia City, the best known of these and the sole survivor, became the Capitol of the Territory.

The very much alive ghost town, Virginia City, Montana, is frozen in time. It is a remarkably well-preserved Old West Victorian gold mining town just 50 miles west of Yellowstone National Park (90 miles by road). When the gold ran out, there was still enough left so that homes and businesses were occupied, but there was not enough wealth to remodel the buildings. So it froze, and now represents the whole Victorian era. Virginia City is the true and original Old West. It is a gem, held within an incredibly rich area of natural beauty, recreation and history.

Come rediscover Virginia City & Nevada City, Montana!



THE MONTANA HERITAGE COMMISSION PRESENTS
The Original
VIRGINIA CITY PLAYERS

June 1-30
SHERLOCK HOLMES HOUND OF THE BASKERVILLES

July 2-28
RIP VAN WINKLE

July 30- Sept 2
FRANKENSTEIN

PLUS OUR VARIED, VIGOROUS, VAGARY OF VIVACIOUS VAUDEVILLE VARIETY ACTS!

SHOW TIME | Tu, W, F & Sat 7pm
| W, Th, Sat & Sun 2pm

TICKETS | Adult \$16
College, Seniors, Military \$15
Children 17 & under \$10
Group discounts available

1.800.829.2969
www.virginiacityplayers.com

DOWNLOAD OUR VIRGINIA CITY APP FOR SMARTPHONES!

The Brewery Follies
Live comedy at the old H.S. Gilbert Brewery
Satire! Nonsense! Foolishness! Absurdity!

MAY 24TH - SEPT 21ST
SHOW TIMES 4PM & 8PM
RESERVATIONS REQUIRED
800.829.2969 x3
www.breweryfollies.net

June 2013 Events

June 1	VC Players : Opening Night	800.829.2969 x2
June 7-9	Irish Weekend	406.843.5555
June 21	Victorian High Tea & other festivities	406.682.4935
June 22	Grand Victorian Ball	406.682.4935
	White Trash Bash at Bale of Hay	406.843.5700
June 29	Harry Yeomen ~ Cowboy Poet at Elling Hse	406.843.5507
June 29-30	Brothel Days	406.843.5700

LIVING HISTORY EVERY WEEKEND

between mid-May through mid-Sept!

June 1-2	The Murder of Dillingham
June 8-9	George Ives Trial & Hanging
June 15-16	The Hanging of Red Yeager
June 15	Lantern Tour
June 22-23	Con Orem & Hugh O'Neil Fight
June 22	The Main Event - 6:30pm
June 29-30	Alder Gulch Legends
June 29	Lantern Tour

\$49
for Madison County Residents, State Employees & those who stay the night in Madison County!

FAMILY FUN DAY PASS
Good for 2 days for families of 5
Purchase at VC Depot or NC Museum
INCLUDES TRAIN, RIVER OF GOLD, LIVING HISTORY MUSEUM

\$69

Those who purchase a family pass get kids in free with the purchase of two adult tickets. (Valid through the month of June, limit of 3 kids)



Montana Heritage Commission
PO Box 338
Virginia City, MT 59755
www.virginiacitymt.com

Virginia City Area Chamber
PO Box 218
Virginia City, MT 59755
www.virginiacity.com

Find us on Facebook! Virginia City Montana {Chamber of Commerce}

This advertisement was paid for by the Montana Heritage Commission through the accommodation taxes.

OUTPOSTEVENTS.NET

SECTION C Thursday, June 20, 2013

GO TO outpostevents.net FOR A COMPLETE LISTING OF EVENTS

WEDNESDAY JUNE 19

Books & Babies, Ennis

Bring your infants & toddlers to the MVPL for a special day of surprises as Miss Sherry brings out the giant toy box of fun. 682-7244

Adult Open Gym, Ennis

Ennis Continuing Education will offer Open Gym for adults every Wednesday from 7-9 p.m. through the summer months.

THURSDAY JUNE 20

Basic Yoga, Ennis

Ennis Continuing Education will offer a three-week session of basic yoga. 12 p.m. at Ennis School. Please call 682-4258 for details.

World Religions Workshop, Ennis

What is the difference of the many religions of the world? The first of multiple workshops on this topic will be held at 1 p.m. at Ennis School. Come with questions. 682-4258

Speaker, Ennis

Author, Gary Forney, will discuss and read from his new book "Dawn in El Dorado: The Early Mining Camps and the Settlement of the Montana Territory". Join him at First Madison Valley Bank at 4 p.m.

Fair Board Meeting, Twin Bridges

6 p.m. at the Fair Office.

Fire Pit Social, Ennis

Madison Valley History Association invites you to a Fire Pit Social at the MVHA Museum at 6:30 p.m. Visit outpostevents.net for complete details.

CPR Training, Ennis

Ennis Continuing Ed is offering an adult CPR training course. \$20 fee includes CPR card. 18+ Ennis High School in Room 2. 682-4258 ext.

PHOTO OF THE WEEK



Baby robins: before and after. Submitted by Matt Hill

253 to sign up.

Christian Fellowship, Ennis

Cattleman Gallery wants to remind you that every Thursday, at 7 p.m., you are invited to an evening of fellowship. 682-5775 or visit outpostevents.net for more details.

FRIDAY JUNE 21

Summer Reading Program, Ennis

Join the librarians at MVPL for Garden Stories today at 11 a.m. Kids of all ages are invited. 682-7244

Senior Fishing Derby, Ennis

All community seniors are invited to the Lion's Club Senior Fishing Derby at Lion's Club Park. 10 a.m.

Art Walk, Ennis

Join other community members downtown for the first Summer Gallery Art Walk of the season. 5-8 p.m. Visit ennischamber.com for the details.

Music in the Park, West Yellowstone

Kennedy & the Assassins kick off this summer's series with their special version of rock & roll. Bring your blanket or lawn chair to Pioneer Park and enjoy the evening. 646-7701 for more info.

Retirement Party, Ruby River Road

Please join us in wishing Doris Fischer well as she begins a new chapter in her life. 5 - 8 p.m. at the Ruby Habitat Foundation Visitors Center. Food will be provided by locals. Please RSVP to Trisha, 842-5741 ext. 100, or Ann at 596-1013.

Grand Victorian Ball, Virginia City

5:30 p.m. Tickets by calling 682-4935. A full schedule of events can be found at virginiacity.com.

Relay for Life, Ennis

Madison County Relay for Life will be held on the Ennis football field

starting at 6 p.m. Visit madisonrelay.com for more info.

Broncs and Barrels, Whitehall

Head over to the Rodeo Grounds for the Annual Bucking Horse Futurity and Barrel Racing. 7 p.m. Sponsored by the Whitehall Chamber of Commerce.

Live Music, Norris

Trevor Reichman (Americana/Folk) 7 p.m. Norris Hot Springs. For more info please visit www.norrihotsprings.com

Movie Night, Ennis

Madison Theatre presents: "Epic", an animated film rated PG. Movie starts promptly at 7 p.m. 682-4023

Live Music, Virginia City

The Dirty Shame is back in town. The local favorite will be at The Wells Fargo Steakhouse 9 p.m.

Star Gazing, Twin Bridges

Head out to Cottontail Observatory at 9:30 p.m. for an evening of star gazing and viewing. 280 Wet Georgia Road. For directions visit outpostevents.net or call 842-7722. Everyone is welcome.

SATURDAY JUNE 22

Volunteer Work Day, Jack Creek Preserve

Join others at the Outdoor Education Center on Jack Creek Preserve from 9 - 3 p.m. for a final clean up of the site, putting furniture together, random finishing work and trail work. Drinks, snacks and lunch will be provided to all who come for the day. Please call 995-7550 or email Jackie@jackcreekpreserve.org to RSVP.

ATV Benefit Ride, Twin Bridges

A benefit ride for Corey Rydquist has been arranged through local support. Meet at

the Blue Anchor between 9 and 10 a.m. for an 11 a.m. departure. \$20/rider with proceeds going to Corey's family. Call 596-4726 or 596-1058 for more info.

Work Day, Virginia City

Help restore the original fence of The Elling House and weed the gardens for the Three Mary's Garden dedication on June 29. 10 a.m. will start the workday. Bring your own lunch. Drinks and dessert will be provided.

Photo Class, West Yellowstone

The West Yellowstone Economic Development Center is offering this FREE class to teach you how to properly care for and utilize your camera. Instructor, Christopher Balmer, is limiting the course to 30 attendees so call 646-7353 to

Outpostevents.net
CONTINUED ON
PAGE C6

ARROW REAL ESTATE
Ennis, Montana
THE OLDEST INDEPENDENT REAL ESTATE FIRM IN THE VALLEY

VINTAGE BUNGALOW in LOWER ENNIS has 1,278 SF on 2 levels, with 2 BR/2 BA + bonus room, family room & wood stove in basement, on large corner lot with mature landscaping, seasonal ditch w/ water rights, one-car garage + large garage/shop. Ready to move in! Motivated Seller! 227 E. Ennis St. \$185,000. (MLS #189726)

(406)682-4290 • 219 E. Main Street
P.O. Box 546 • Ennis, MT 59729

www.arrowreal.com • arrow@3rivers.net

You Need It - We've Got It, We Gravel The Way

SMALL CONSTRUCTION
"WE MOVE THE EARTH"
and D&R GRAVEL

EXPERIENCE COUNTS
since 1953

For all your Gravel and Excavation needs in
Madison County and surrounding areas.

Call Today 842-5213

Located 3/4 mile East of Alder on Hwy 287
PO BOX 92
Alder, MT 59710
Office: 406-842-5213 • Fax: 406-842-7448

State Tested and Approved

4 RIVERS CONCRETE PRODUCTS
SHERIDAN, MT
WHITEHALL, MT

Quality Concrete - Premium Service

★ ★ ★ ★ ★

Front Discharge Trucks
Ready Mix Concrete
Washed Sand & Gravel

842-5735 • 287-3728

PUBLIC NOTICES

Reaching Madison County and the surrounding areas with your classified ad.

Call 682-7755 or toll-free 1-888-238-7849

NOTICE OF TRUSTEE'S SALE

Reference is hereby made to that certain trust indenture/deed of trust ("Deed of Trust") dated 05/18/06, recorded as Instrument No. 113410, mortgage records of Madison County, Montana in which Gregory P. Frederick and Connie G. Frederick, as husband and wife was Grantor, Mortgage Electronic Registration Systems, Inc. solely as nominee for Texas Capital Bank, N.A. was Beneficiary and Security Title Company was Trustee. First American Title Insurance Company has succeeded Security Title Company as Successor Trustee. The Deed of Trust encumbers real property ("Property") located in Madison County, Montana, more particularly described as follows: Unit 4-D, of Hill Condominium, said Condominium located in the SE1/4 of Section 19, Township 6 South, Range 3 East, P.M.M., Madison County, Montana. Together with an undivided .4894 percentile interest in and to the Common Areas and Facilities which are established, defined and identified in the Declaration for Hill Condominium, recorded June 21, 1974 in Book 242, Page 6, records of Madison County, Montana. Said Condominium is for residential purposes only. By written instrument recorded as Instrument No. 149193, beneficial interest in the Deed of Trust was assigned to Wells Fargo Bank, N.A.. Beneficiary has declared the Grantor in default of the terms of the Deed of Trust and the promissory note ("Note") secured by the Deed of Trust because of Grantor's failure timely to pay all monthly installments of principal, interest and, if applicable, escrow reserves for taxes and/or insurance as required by the Note and Deed of Trust. According to the Beneficiary, the obligation evidenced by the Note ("Loan") is now due for the 12/01/12 installment payment and all monthly installment payments due thereafter. As of April 24, 2013, the amount necessary to fully satisfy the Loan was \$151,477.11. This amount includes the outstanding principal balance of \$145,156.08, plus accrued interest, accrued late charges, accrued escrow installments for insurance and/or taxes (if any) and advances for the protection of beneficiary's security interest (if any). Because of the defaults stated above, Beneficiary has elected to sell the Property to satisfy the Loan and has instructed Successor Trustee to commence sale proceedings. Successor Trustee will sell the Property at public auction the North Entrance of the Madison County Courthouse, 110 East Wallace St., Virginia City, MT 59755, City of Virginia City on September 3, 2013 at 2:00 PM, Mountain Time. The sale is a public sale and any person, including Beneficiary and excepting only Successor Trustee, may bid at the sale. The bid price must be paid immediately upon the close of bidding at the sale location in cash or cash equivalents (valid money orders, certified checks or cashier's checks). The conveyance will be made by trustee's deed without any representation or warranty, express or implied, as the sale is made strictly on an as-is, where-is basis. Grantor, successor in interest to Grantor or any other person having an interest in the Property may, at any time prior to the trustee's sale, pay to the Beneficiary the entire amount then due on the Loan (including foreclosure costs and expenses actually incurred and trustee's and attorney's fees) other than such portion of the principal as would not then be due had no default occurred. Tender of these sums shall effect a cure of the defaults stated above (if all non-monetary defaults are also cured) and shall result in Trustee's termination of the foreclosure and cancellation of the foreclosure sale. The trustee's rules of auction may be accessed at www.northwesttrustee.com and are incorporated by the reference. You may also access sale status at www.Northwesttrustee.com or USA-Foreclosure.com. (TS# 7023.105599) 1002.248435-File No. (Pub. June 13, 20, 27 2013) nts

NOTICE THAT A TAX DEED MAY BE ISSUED

TO: J WAY TRUST, John Wayne Thomas Sr. and Helen Ann Thomas Trustees of the J-Way Trust, John Wayne Thomas Sr. and Helen A., Dr. Thomas Trustees of the J-Way Trust, Current Occupant, Dr. J.W. Thomas, Madison County Treasurer Pursuant to section 15-18-212, Montana Code Annotated, NOTICE IS HEREBY GIVEN: Parcel #: 0002001300
1. As a result of a property tax delinquency, a property tax lien exists on the following described real property in which you may have an interest: A tract of land situated and lying in the SE1/4NW1/4SE1/4 Of Section 16, Township 6 South, Range 3 West, P.M.M., Madison County, Montana, more particularly described as follows: Beginning at the Northwest Corner of the tract herein described which is also the Northwest Corner of the SE1/4NW1/4SE1/4 of said Section, and running thence Southerly along the West Boundary of the SE1/4NW1/4SE1/4 OF Said Section, 269 feet, more or less to its intersection with the Easterly right-of-way boundary of Montana State Highway No. 287; thence, N42°54'E, 367 feet, more or less to the North Boundary of said SE1/4NW1/4SE1/4 OF Said Section; thence Westerly along said North Boundary, 250 feet, more or less to the point of beginning. Deed Ref: Book 245, page 854 and Book 225, page 336
2. The property taxes became delinquent on May 31st, 2010.
3. The property tax lien was attached as the result of a tax lien sale held on 19th day of July, 2010.
4. The property tax lien was purchased at a tax lien sale on the 19th day of July, 2010 by Madison County whose address is P.O. Box 247, 100 E Wallace, Virginia City, Mt. 59755.
5. The lien was subsequently assigned to KT Land Company, LLC whose address is P.O. Box 336, Black Eagle, Mt. 59414.
6. As of the date of this notice, the amount of tax due, including penalties, interest and costs is:
TAXES: \$1286.84
PENALTY: \$ 22.47
INTEREST: \$ 166.47
COST: \$ 404.84
TOTAL: \$1880.62
7. For the property tax lien to be liquidated, the total amount listed in paragraph 6 must be paid by August 15th, 2013 which is the date that the redemption period expires or expired. **THE AMOUNT OF INTEREST AND COSTS ARE AS OF THE DATE OF THIS NOTICE AND WILL CONTINUE TO ACCRUE UNTIL THE DATE OF REDEMPTION. THE TOTAL AMOUNT OF INTEREST AND COST THAT MUST BE PAID FOR REDEMPTION WILL BE CALCULATED BY THE COUNTY TREASURER AS OF THE DATE OF PAYMENT.
8. If all taxes, penalties, interest, and costs are not paid to the county treasurer on or prior to August 15th, 2013, which is the date the redemption period expires, or on or prior to the date on which the county treasurer will otherwise issue a tax deed, a tax deed may be issued to the purchaser on the day following the date that the redemption period expires or on the date the county treasurer will otherwise issue a tax deed.
9. The business address and telephone number of the county treasurer who is responsible for issuing tax deed is: Madison County Treasurer, P.O. Box 247, 100 E Wallace, Virginia

City, Mt. 59755, 1-(406)-843-4212. FURTHER NOTICE FOR THOSE PERSONS LISTED ABOVE WHOSE ADDRESSES ARE UNKNOWN:
1. The address of the interested party is unknown.
2. The published notice meets the legal requirements for notice of a pending tax deed issuance.
3. The interested party's rights in the property may be in jeopardy. Dated this 13th, day of June, 2013
KT Land Company, LLC
(Pub. June 13, 20 2013) ktlc

ACCEPTING BIDS:

Ennis School is accepting bids on a project to reside the school's rental house. If you are interested, please contact superintendent John Overstreet at (406)682-4258 or stop by his office at 223 Charles Avenue. (Pub. June 13, 20 2013) es

INVITATION FOR BIDS

LEASE OF STATE LANDS
Sealed bids will be accepted by the Montana Department of Natural Resources and Conservation, Ag & Grazing Management Bureau, P.O. Box 201601, Helena, Montana 59620, through June 27, 2013 for a 10-year Agricultural & Grazing Lease on the following described land in Madison County, SW44NE4, SW4SW4 - Section 4, T2S, R1W: containing 79 acres of grazing land, 1 acres cropland. The minimum bid rate is \$149.10 based on a grazing carrying capacity of 15 AUMs at a rate of \$9.94 per AUM, plus the minimum rental of 25% crop share to the state. By law all bids in order to be considered valid must include a deposit in the form of a certified check, cashiers check or money order in the amount equal to 100% of the amount bid for grazing, \$20.00 per acre for the agricultural land, plus a non-refundable lease application fee of \$25.00. In order to be considered, all bids must be accompanied with a completed application to lease state lands. The successful bidder must in addition to the rental, make settlement with the owner of the existing improvements on the land. The State Board of Land Commissioners reserves the right to reject any and all bids. Access to the land is limited, so prospective bidders should contact the Department's Bozeman office at (406) 556-4507 prior to requesting bid packets. Bid forms may be obtained from the Department at the above address or in person at 1625 11th Avenue, Helena or by calling 406-444-3014
Ag & Grazing Management Bureau
Montana DNRC
(Pub. June 13, 20 2013) dnrc

NOTICE OF DEFAULT AND TERMINATION OF LEASE AGREEMENT

TO: Erin Worley
Post Office Box 670
Ennis, MT 59729
NOTICE IS HEREBY GIVEN:
That you are in default of that certain Lease Agreement whereby you agreed to lease space numbers 4, 79 and 83 of the Self-Storage Units of Madison Valley Storage in Ennis, Madison County, Montana, for the sum of \$55.00 per unit per month. You have failed and refused to make payment of rental amounts for the months of November 2010 through and including June 2013 for Unit 4, and for the months of October 2010 through June 2013 for Units 79 and 83 (for a total of 32 months for Unit 4; and a total of 33 months for Units 79 and 83) for the total sum of \$5,390.00.
Pursuant to Montana Code Annotated 70-6-420, et seq., default in payment of storage space rental fees will result in the sale, at public auction, of the contents of said mini-storage units for payment of said rental fees. Proceeds of such sale shall be applied first to the costs and expenses for the sale, and then to unpaid storage rental fees. You are hereby notified that you have thirty (30) days from the date hereof to pay said rental amounts in full and remove the contents of said self-storage Unit numbers 4, 79 and 83, or a public auction will commence. Said public auction is to be held on Saturday, July 6, 2013, at the hour of 10:00 a.m. at the self-storage units of Madison Valley Storage, Ennis, Montana.
You are further notified that the above-mentioned Lease Agreement is hereby terminated and of no further force or effect. Dated this 4th day of June, 2013.
//s//Paul McMullin
(Pub. June 13, 20 2013) km

NOTICE OF DEFAULT AND TERMINATION OF LEASE AGREEMENT

TO: Shad Boardman
Post Office Box 1258
Boulder, MT 59632
NOTICE IS HEREBY GIVEN:
That you are in default of that certain Lease Agreement whereby you agreed to lease space number 95 of the Self-Storage Units of Madison Valley Storage in Ennis, Madison County, Montana, for the sum of \$55.00 per month. You have failed and refused to make payment of rental amounts for the months of September 2009 through and including June 2013 (a total of 46 months) for the total sum of \$2,530.00.
Pursuant to Montana Code Annotated 70-6-420, et seq., default in payment of storage space rental fees will result in the sale, at public auction, of the contents of said mini-storage unit(s) for payment of said rental fees. Proceeds of such sale shall be applied first to the costs and expenses for the sale, and then to unpaid storage rental fees. You are hereby notified that you have thirty (30) days from the date hereof to pay said rental amounts in full and remove the contents of said self-storage unit number 95, or a public auction will commence. Said public auction is to be held on Saturday, July 6, 2013, at the hour of 10:00 a.m. at the self-storage units of Madison Valley Storage, Ennis, Montana.
You are further notified that the above-mentioned Lease Agreement is hereby terminated and of no further force or effect. Dated this 4th day of June, 2013.
//s//Paul McMullin
(Pub. June 13, 20 2013) km

NOTICE OF DEFAULT AND TERMINATION OF LEASE AGREEMENT

TO: Lydia Stroud
Post Office Box 366
Pollock Pines, CA 95726
NOTICE IS HEREBY GIVEN:
That you are in default of that certain Lease Agreement whereby you agreed to lease space numbers 7 and 8 of the Self-Storage Units of Madison Valley Storage in Ennis, Madison County, Montana, for the sum of \$55.00 per unit per month. You have failed and refused to make payment of rental amounts for the months of January 2011 through and including June 2013 (a total of 30 months, less a \$70 credit) for the total sum

of \$3,230.00.
Pursuant to Montana Code Annotated 70-6-420, et seq., default in payment of storage space rental fees will result in the sale, at public auction, of the contents of said mini-storage unit(s) for payment of said rental fees. Proceeds of such sale shall be applied first to the costs and expenses for the sale, and then to unpaid storage rental fees. You are hereby notified that you have thirty (30) days from the date hereof to pay said rental amounts in full and remove the contents of said self-storage unit numbers 7 and 8, or a public auction will commence. Said public auction is to be held on Saturday, July 6, 2013, at the hour of 10:00 a.m. at the self-storage units of Madison Valley Storage, Ennis, Montana.
You are further notified that the above-mentioned Lease Agreement is hereby terminated and of no further force or effect. Dated this 4th day of June, 2013.
//s//Paul McMullin
(Pub. June 13, 20 2013) km

INVITATION FOR BIDS

LEASE OF STATE LANDS
Sealed bids will be accepted by the Montana Department of Natural Resources and Conservation, Ag & Grazing Management Bureau, P.O. Box 201601, Helena, Montana 59620, through June 27, 2013 for a 10-year Agricultural & Grazing Lease on the following described land in Madison County, ALL - Section 36, T1S, R1W and ALL - Section 12, T2S, R1W: Containing 915.90 acres of grazing land, and 357.1 acres of cropland. The minimum bid rate is \$2,644.04 based on a grazing carrying capacity of 266 AUMs at a rate of \$9.94 per AUM, plus the minimum rental of 25% crop share to the state. By law all bids in order to be considered valid must include a deposit in the form of a certified check, cashiers check or money order in the amount equal to 100% of the amount bid for grazing, \$20.00 per acre for the agricultural land, plus a non-refundable lease application fee of \$25.00. In order to be considered, all bids must be accompanied with a completed application to lease state lands. The successful bidder must in addition to the rental, make settlement with the owner of the existing improvements on the land. The State Board of Land Commissioners reserves the right to reject any and all bids. Access to the land is limited, so prospective bidders should contact the Department's Bozeman office at (406) 556-4507 prior to requesting bid packets. Bid forms may be obtained from the Department at the above address or in person at 1625 11th Avenue, Helena or by calling 406-444-3014
Ag & Grazing Management Bureau
Montana DNRC
(Pub. June 13, 20 2013) dnrc

NOTICE OF DEFAULT AND TERMINATION OF LEASE AGREEMENT

TO: Toby Davis
Post Office Box 1655
Ennis, MT 59729
NOTICE IS HEREBY GIVEN:
That you are in default of that certain Lease Agreement whereby you agreed to lease space number 19 of the Self-Storage Units of Madison Valley Storage in Ennis, Madison County, Montana, for the sum of \$50.00 per month. You have failed and refused to make payment of rental amounts for the months of December 2010 through and including June 2013 (a total of 31 months) for the total sum of \$1,550.00.
Pursuant to Montana Code Annotated 70-6-420, et seq., default in payment of storage space rental fees will result in the sale, at public auction, of the contents of said mini-storage unit(s) for payment of said rental fees. Proceeds of such sale shall be applied first to the costs and expenses for the sale, and then to unpaid storage rental fees. You are hereby notified that you have thirty (30) days from the date hereof to pay said rental amounts in full and remove the contents of said self-storage unit number 19, or a public auction will commence. Said public auction is to be held on Saturday, July 6, 2013, at the hour of 10:00 a.m. at the self-storage units of Madison Valley Storage, Ennis, Montana.
You are further notified that the above-mentioned Lease Agreement is hereby terminated and of no further force or effect. Dated this 4th day of June, 2013.
//s//Paul McMullin
(Pub. June 13, 20 2013) km

NOTICE OF DEFAULT AND TERMINATION OF LEASE AGREEMENT

TO: Michael Yochim
Post Office Box 338
McAllister, MT 59740
NOTICE IS HEREBY GIVEN:
That you are in default of that certain Lease Agreement whereby you agreed to lease space number 173 of the Self-Storage Units of Madison Valley Storage in Ennis, Madison County, Montana, for the sum of \$55.00 per month. You have failed and refused to make payment of rental amounts for the months of March 2009 through and including June 2013 (a total of 52 months, with a \$25.00 credit) for the total sum of \$2,835.00.
Pursuant to Montana Code Annotated 70-6-420, et seq., default in payment of storage space rental fees will result in the sale, at public auction, of the contents of said mini-storage unit(s) for payment of said rental fees. Proceeds of such sale shall be applied first to the costs and expenses for the sale, and then to unpaid storage rental fees. You are hereby notified that you have thirty (30) days from the date hereof to pay said rental amounts in full and remove the contents of said self-storage unit number 173, or a public auction will commence. Said public auction is to be held on Saturday, July 6, 2013, at the hour of 10:00 a.m. at the self-storage units of Madison Valley Storage, Ennis, Montana.
You are further notified that the above-mentioned Lease Agreement is hereby terminated and of no further force or effect. Dated this 4th day of June, 2013.
//s//Paul McMullin
(Pub. June 13, 20 2013) km

NOTICE OF DEFAULT AND TERMINATION OF LEASE AGREEMENT

TO: Mike Mulvehill
Whitehall-Parker Securities, Inc.
477 Pacific Avenue, 2nd Floor
San Francisco, CA 94133
NOTICE IS HEREBY GIVEN:
That you are in default of that certain Lease Agreement whereby you agreed to lease space number 174 of the Self-Storage Units of Madison Valley Storage in Ennis, Madison County, Montana, for the sum of \$55.00 per month. You have failed and refused to make payment of rental amounts for the months of June 2011 through and including June 2013 (a total of 25 months) for the total sum of \$1,375.00.
Pursuant to Montana Code Annotated 70-

6-420, et seq., default in payment of storage space rental fees will result in the sale, at public auction, of the contents of said mini-storage unit(s) for payment of said rental fees. Proceeds of such sale shall be applied first to the costs and expenses for the sale, and then to unpaid storage rental fees. You are hereby notified that you have thirty (30) days from the date hereof to pay said rental amounts in full and remove the contents of said self-storage unit number 174, or a public auction will commence. Said public auction is to be held on Saturday, July 6, 2013, at the hour of 10:00 a.m. at the self-storage units of Madison Valley Storage, Ennis, Montana.
You are further notified that the above-mentioned Lease Agreement is hereby terminated and of no further force or effect. Dated this 4th day of June, 2013.
//s//Paul McMullin
(Pub. June 13, 20 2013) km

NOTICE OF HEARING

MONTANA FIFTH JUDICIAL DISTRICT COURT, MADISON COUNTY
IN THE MATTER OF THE ESTATE OF SIGVART W. JENSEN, Deceased.
Probate No. DP-29-2013-18
NOTICE IS HEREBY GIVEN that Jason J. Henderson has filed an APPLICATION OR PETITION FOR APPOINTMENT OF LIMITED SPECIAL ADMINISTRATOR of the Estate of Sigvart W. Jensen which may be examined in the office of the Clerk of this Court. Hearing has been set at the Courtroom of this Court in Virginia City of Madison County, Montana, on the 22nd day of July, 2013, at 11:00 o'clock a.m., at which time and place all interested persons may appear and object. Applicant, Jason J. Henderson, will appear at said hearing via VisionNet videoconference. This notice is being given at least 14 days prior to the date of the hearing, pursuant to § 72-1-301, MCA.
DATED this 29th day of May, 2013.
//s//Jason J. Henderson, #11414
Mackoff Kellogg Law Firm
38 2nd Ave East
Dickinson, North Dakota 58601
(Pub. June 13, 20, 27 2013)jmklf

SUMMONS FOR PUBLICATION

MONTANA FIFTH JUDICIAL DISTRICT COURT, MADISON COUNTY
DAYNE LAHOOD AND MOLLY LAHOOD, Plaintiffs,
-vs- MARGARITA M. BISCHOFF, as Trustee of the Margarita M. Bischoff Revocable Trust, Dated October 29, 1998; MARGARITA M. BISCHOFF, Individually; MARGARITA M. BISCHOFF REVOCABLE TRUST, c/o NICHOLAS BISCHOFF; and all other persons, known or unknown, claiming or who might claim any right, title, estate, or interest in or lien or encumbrance upon the real property described in the complaint adverse to plaintiff's ownership or any cloud upon plaintiff's title, whether the claim or possible claim is present or contingent. Defendants.
Cause No. DV 29-13-17
THE STATE OF MONTANA, TO THE ABOVE-NAMED DEFENDANTS, AND TO ALL OTHER PERSONS UNKNOWN:
YOU ARE HEREBY SUMMONED to answer the Complaint of the Plaintiff in this action, which is filed in the office of the Clerk of this Court, a copy of which is herewith served upon you, and to file your answer and serve a copy thereof upon the Plaintiff's attorney within twenty-one (21) days after the service of this Summons, exclusive of the day of service, and in case of your failure to appear or answer, judgment will be taken against you by default.
This action is brought for the purpose of quieting title to lands situated in Madison County, Montana, and described as follows:
Lot or Tract 197 of The Shining Mountains, Unit II, according to the official plat filed in Plat Book 4, Page 50, Records of Madison County, Montana.
TOGETHER with all beneficial easements, tenements, hereditaments, appurtenances, mineral rights, water rights, and/or water ditches, if any, thereunto belonging.
WITNESS MY HAND AND THE SEAL OF SAID COURT, this 28th day of May, 2013.
//s//Bundy K. Bailey, CLERK OF COURT
By: //s//Kacey Smart, Deputy
STEPHEN E. WOODRUFF, ESQ.
HUPPERT, SWINDLEHURST & WOODRUFF P.C.
420 South Second Street, P.O. Box 523
Livingston, MT 59047
Attorneys for Plaintiffs
(Pub. June 13, 20, 27 2013) hs&w

NOTICE THAT A TAX DEED MAY BE ISSUED

TO: J WAY TRUST, John Wayne Thomas Sr. and Helen Ann Thomas Trustees of the J-Way Trust, John Wayne Thomas Sr. and Helen A., Dr. Thomas Trustees of the J-Way Trust, Current Occupant, Dr. J.W. Thomas, Madison County Treasurer Pursuant to section 15-18-212, Montana Code Annotated, NOTICE IS HEREBY GIVEN: Parcel #: 0002001300
1. As a result of a property tax delinquency, a property tax lien exists on the following described real property in which you may have an interest: A tract of land situated and lying in the SE1/4NW1/4SE1/4 Of Section 16, Township 6 South, Range 3 West, P.M.M., Madison County, Montana, more particularly described as follows: Beginning at the Northwest Corner of the tract herein described which is also the Northwest Corner of the SE1/4NW1/4SE1/4 of said Section, and running thence Southerly along the West Boundary of the SE1/4NW1/4SE1/4 OF Said Section, 269 feet, more or less to its intersection with the Easterly right-of-way boundary of Montana State Highway No. 287; thence, N42°54'E, 367 feet, more or less to the North Boundary of said SE1/4NW1/4SE1/4 OF Said Section; thence Westerly along said North Boundary, 250 feet, more or less to the point of beginning. Deed Ref: Book 245, page 854 and Book 225, page 336
2. The property taxes became delinquent on May 31st, 2010.
3. The property tax lien was attached as the result of a tax lien sale held on 19th day of July, 2010.
4. The property tax lien was purchased at a tax lien sale on the 19th day of July, 2010 by Madison County whose address is P.O. Box 247, 100 E Wallace, Virginia City, Mt. 59755.
5. The lien was subsequently assigned to KT Land Company, LLC whose address is P.O. Box 336, Black Eagle, Mt. 59414.
6. As of the date of this notice, the amount of tax due, including penalties, interest and costs is:
TAXES: \$1286.84
PENALTY: \$ 22.47
INTEREST: \$ 166.47
COST: \$ 404.84
TOTAL: \$1880.62
7. For the property tax lien to be liquidated, the total amount listed in paragraph 6 must be paid by August 23rd, 2013 which is the date that the redemption period expires or expired. **THE AMOUNT OF INTEREST AND COSTS ARE AS OF THE DATE OF THIS NOTICE AND WILL CONTINUE TO ACCRUE UNTIL THE DATE OF REDEMPTION. THE TOTAL AMOUNT OF INTEREST

AND COST THAT MUST BE PAID FOR REDEMPTION WILL BE CALCULATED BY THE COUNTY TREASURER AS OF THE DATE OF PAYMENT.
8. If all taxes, penalties, interest, and costs are not paid to the county treasurer on or prior to August 23rd, 2013, which is the date the redemption period expires, or on or prior to the date on which the county treasurer will otherwise issue a tax deed, a tax deed may be issued to the purchaser on the day following the date that the redemption period expires or on the date the county treasurer will otherwise issue a tax deed.
9. The business address and telephone number of the county treasurer who is responsible for issuing tax deed is: Madison County Treasurer, P.O. Box 247, 100 E Wallace, Virginia City, Mt. 59755, 1-(406)-843-4212. FURTHER NOTICE FOR THOSE PERSONS LISTED ABOVE WHOSE ADDRESSES ARE UNKNOWN:
1. The address of the interested party is unknown.
2. The published notice meets the legal requirements for notice of a pending tax deed issuance.
3. The interested party's rights in the property may be in jeopardy. Dated this 20th, day of June, 2013
KT Land Company, LLC
(Pub. June 20, 27 2013) ktlc

NOTICE TO CREDITORS

IN THE FIFTH JUDICIAL DISTRICT OF THE STATE OF MONTANA, COUNTY OF MADISON
IN RE ESTATE OF:
KIMBERLEI KAY WESCHLER, aka KIMBERLEI MANNING, Deceased
Cause No. DP-29-2013-20
That the undersigned has been appointed Personal Representative of the above-named estate. All persons having claims against said decedent are required to present their claims within four (4) months after the date of the first publication of this notice, or said claims will be forever barred. Claims must either be mailed to RICHARD SHELTON, JR., the Personal Representative, return receipt requested, at P.O. Box 335, Cameron, MT 59720, or filed with the Clerk of the above-entitled Court.
Dated: June 4, 2013
//s// RICHARD SHELTON, JR.
Personal Representative
(Pub. June 20, 27, July 4 2013) km

PUBLIC NOTICE

CHANGE OF MEETING DATE
Notice is hereby given that the Ruby Valley Conservation District will change the meeting date for its regular first Wednesday of the month meeting to July 10, 2013 at the usual location, 402 South Main Street, Sheridan, Montana. Meeting time will be at 8:00 P.M. Shirley Galovic, District Administrator, R.V.C.D.
(Pub. June 20, 27, July 4 2013) rvcd


PUBLIC NOTICE

Notice is hereby given that on July 17, 2013, at ten o'clock a.m., in the office of the Madison County Treasurer in Virginia City, Montana, taxes on the 2012 delinquent property will be offered for sale on assignment. Delinquent taxes including penalties, interest and costs are a lien upon the property and, unless such are paid prior to this time, the lien will be offered for sale. Per SB281, notice is to be mailed certified at least two weeks prior to the date of the payment to whom the property is assessed. Before issuing the tax lien sale certificate, the treasurer is to receive proof of this notice.
A list of each property and all persons owing taxes for the year 2012 and prior is on file in the County Treasurer's office and is open to the public for inspection.

Shelly Burke, Treasurer
sburke@madison.mt.gov
www.madison.mt.gov
406-843-4212
Madison County
(Pub. June 20, 27, July 4 2013) mct

NOTICE OF APPLICATION FOR TRANSFER OF OWNERSHIP FOR MONTANA ALL-ALCOHOLIC BEVERAGES WITH CATERING ENDORSEMENT

LICENSE NO. 25-729-4652-002
On May 10, 2013, Zhanglu-MT, LLC - Sole Member: Xiren Zhang, filed an application for the transfer of a license to be used at THE SPORTSMAN, 310 MT Highway 287 North, Ennis, Madison County, Montana.
Protests against an application must be (1) made in writing, (2) mailed to the Department of Revenue, Liquor Licensing, PO Box 1712, Helena, Montana 59624-1712, and (3) received and date stamped by the Department no later than the 8th day of July, 2013. Protests will be accepted from residents of the county from which the application originates, residents of adjoining Montana counties, or residents of adjoining counties in another state if the criteria in subsection 16-4-207 (4) (d), MCA, are met.
Each protestor is required to mail a separate letter of protest that contains in legible print, the protestor's full name, mailing address, and street address. Each letter must be signed by the protestor. Protest petitions bearing the names and signatures of more than one protestor will not be considered. Protest letters must provide the license number, trade name, or applicant name associated with the license being protested for identification purposes. Protest letters must contain a clear statement of the writer's intent to protest the application. The grounds for protest of an application for a transfer of location are limited to those set out in section 16-4-405, MCA, for a denial of a license, and public convenience and necessity as set out in section 16-4-203, MCA. If the protested application is for a transfer of ownership not involving a transfer of location, the grounds for protest are limited to those set out in section 16-4-405, MCA. Protest letters that do not provide the information described in this paragraph will not be considered valid protest letters. Only those grounds for protest raised in valid protest letters will be considered at hearing. An individual's testimony will be limited to the grounds for protest raised in that individual's valid protest letter. If the department receives a sufficient number of protests to require a hearing pursuant to section 16-4-207(4)(a), MCA, a hearing will be scheduled in Helena, Montana. If the department receives a sufficient number of protests to require a hearing pursuant to section 16-4-207(4)(b), MCA, to determine public convenience and necessity, a hearing will be held in the county in which the proposed premises is located. All qualified protestors will be notified of the time, date and location of the hearing. Hearings are typically scheduled within 90 days following the protest deadline.
If a sufficient number of protests to require a hearing are not received and all licensing criteria have been satisfied, the department may issue the license without holding a hearing.
DATED: June 17, 2013
BY: Danette Tennessee
Compliance Specialist
(Pub. June 20, 27 2013) mdrll




2013 RELAY FOR LIFE


Join Us and Support RELAY
RELAY FOR LIFE, ENNIS HIGH SCHOOL TRACK JUNE 21-22

4:00 PM SURVIVOR RECEPTION
6:00 PM OPENING CEREMONY
10:00 PM LUMINARIA CEREMONY
9:00 AM CLOSING CEREMONY


For Information about Joining Relay - Call Halsey 580-4277
To Sign Up As a Survivor - Call Maria 682-7283
To Dedicate a Luminaria - Call Cindy 682-3011
To Be a Corporate Sponsor - Call Tana 682-7317



MCA 15-17-122




Get Results.



GOT DIRTY WINDOWS?

Call Eric at 660-1075
for professional
pure water
window cleaning
and have a great
summer!



BIG SKY WINDOW CLEANING

DRIVERS:

4 Local and
Layover Runs available!
Excellent Benefits incl.
Medical, Dental, Prescription
and Vision, 401K.
Paid Vacations! Employee Safety
Bonus Plan! CDL-A, 1yr. Exp. Req.
Estenson Logistics. Apply: www.
goelc.com, 1-866-336-9642

the Madison County MARKETPLACE

View classifieds online at www.madisoniannews.com/classifieds.

FOR SALE

FINNIGAN'S FIREWOOD: Honest Cord, \$150 delivered. Any size or amount, Ennis/VC/Ruby Valley. 599-5270. Senior/Veteran/Volume Disc. 15-13p

2010 Toyota Sequoia Platinum Like new, excellent shape Blizard Pearl/ Loaded One Owner \$35,900 OBO 406-646-9661 22-TFC-B

Private Lake in NW Montana on 70 phenomenal acres! See website: www.MTLickLake.com 28-tfc-b

For Sale: 3 swivel bar stools 12.50/each, portable table saw \$50, small desk \$35 and small square drop leaf table \$25. 682-7466 33-2-p

13 yr. old registered Quarter horse mare, used for trail riding. \$2,000 682-4192 33-2-p

FARM EQUIPMENT
4 BOTTOM/CASE
MOLD BOARD PLOW
12' DISK
G-P CHISEL PLOW
GRAPPLE FORK
F-11 LOADER
HAY HEADER (PUSH-OFF)
ENNIS 682-4641
30-tfc-b

2010 Yamaha SCOOTER low miles; 110mpg vintage style-\$1,800 916-600-3016 34-tfc-b

For Sale or Rent: Lone Elk Mall Unit 1E, formerly a hair and nail salon. Please call 682-4856 for more information. 34-4-b

1994 Ford Explorer Runs & drives great. Looks good. \$1200 684-5181 34-1-b

3 yr. old Angus cow/calf pairs for sale 684-5181 34-1-b

*New 15' wooden drift boat w/ trailer \$1750
*Power-pro Bowflex \$300
*Back inversion table \$100
*Toro lawn tractor LX420 \$500
33-2-p

15 yr. old AQHA Impressive Sorrel Gelding HYPP neg. 1100 lbs. Muscular, well trained. \$1350 682-7154 34-1-b

Secondhand Junque Thurs-Sat 10-4p.m. 119 Chowning, Ennis Grandma's 498-0676 34-2-b

FOR RENT

ENNIS MINI STORAGE New low prices with 10 x 10's starting at \$35. Larger sizes available. Call Reed Real Estate at 682-4236. 15-tfc

Commercial/Retail space available. 219 E Main St in Ennis. Great exposure and location. 950 sq ft. Call Paul if interested at 581-7878. 20-tfc-b

BARKER VILLAGE APARTMENTS: 1 bedroom unfurnished apartments available in Ennis. A/C, washer/dryer equipped, private location. 1 year lease, \$600 per month plus security deposit, utilities included, non-smoking, no dogs. Call Erich Vogeli, Manager at 406-682-5737. 15-tfc

PETERSON'S DISCOUNT STORAGE now taking reservations for covered storage of any size motor home. 10'x19' units for rent. Ennis. 682-7442 18-tfc-b

BARKER VILLAGE APARTMENTS: 1 bedroom furnished apartments available in Ennis. A/C, washer/dryer equipped, private location. 4 month lease, \$650 per month plus security deposit, utilities included, non-smoking, no dogs. Call Erich Vogeli, Manager at 406-682-5737. 15-tfc

FOR RENT: 6 miles south of Ennis: Two-stall horse barn, hay shed, tack room, large field, corral and holding pasture for two horses - you care for animals. \$150/mo (\$5/day) 406-682-7607 31-tfc-b

FOR RENT: Downtown retail space located in the Lone Elk Mall, 1,250 sq. ft. price negotiable call 640-1351. 28-tfc

FOR RENT: 14' x 48' storage unit with 12'w x 14'h door. \$150/mo. Please call Bob at 925-1362 26-tfc-b

FOR RENT: Call Apex Management at 682-7112 or 581-0103 for long term or vacation rentals in Ennis and the Madison Valley. 1-tfc

FOR RENT IN ENNIS: Office Space - 390 sq. ft. includes office, storage area & bathroom. Please contact Cindy at 682-3011 or 581-5372. 14-tfc

FOR RENT: Large mobile home site 1 mile from Ennis. 100 x 150', water & sewer, country atmosphere, quiet. **NO DOGS.** 682-4854. 29-tfc

VACATION RENTAL: Close to Ennis. Rent by the night, week or month. Sleeps 12+ people. Call for rates and more information at 406-287-7861 or 406-498-6113. 48-e/o tfc

MADISON MANAGEMENT Vacation and Long Term Rentals 570-5401 www.madisonmanagement.com 22-tfc

Professional Office Space available in downtown Ennis, close to banks, restaurants. Common area facilities included. Various sizes starting at \$190 per month. Call 682-5653. 15-tfc

LONE ELK MALL Retail/Service/Commercial space for rent. 2,000 +/- sq/ft. Previously occupied by kitchen & bath boutique. Call for terms. 406-682-5653. 15-tfc

MISCELLANEOUS

FIDDLE/VIOLIN & GUITAR LESSONS: Now accepting students June-Oct. Contact Peggy at the Cattleman Gallery, 682-5775 or (941)773-3637. 33-tfc-b

SNOWMOBILE RENTAL LIQUIDATION SALE (800) 426-7669
2012 Polaris 550 Shift \$3899
2013 Polaris 550 Shift \$4619
2013 Arctic Cat T570 \$4367
2013 Polaris 600 RMK \$6323
2013 Polaris 800 RMK \$7279
www.snowmobilesale.com
Rendezvous Snowmobile Rentals
22-tfc-b

HELP WANTED

The Alder School is requesting estimates to replace the roof on the old "teaherage" building located on the playground. Professional recommendations for best materials to use will be taken into consideration. Estimates are due June 15. Please contact Lisa Morgan 406-595-8224 for more details. 29-7-b

Kitchen and wait staff wanted at Blue Moon Saloon, in Cameron, for the summer season. Experience preferred or willingness to learn. Housing may be a possibility for the right person(s). Call 682-4555 or stop by to apply. 31-tfc-b

NOTICE OF BOARD VACANCIES: The Madison County Board of Commissioners has vacancies on the **Big Hole River Advisory Board, the Big Sky Mountains, Trails, Recreation, and Parks District Board, the Library Board** representing the Madison Valley area, and the Tax Appeal Board representing Commission District 2. If you are interested in serving on any of these boards please contact the Commissioners' Office at 406-843-4277, by email at madco@madison.mt.gov, or visit our website at www.madison.mt.gov. 34-2-b

Tobacco Root Mountains Care Center in Sheridan, MT, a small family oriented LTC Facility has a position open for an RN working 9-hour shifts as a charge nurse. Competitive wages, great benefits. Contact Pam at (406) 842-5600 for more info and application. EOE 34-2-b

District clerk position at the Cardwell School. Part-time, must have general clerical skills; accounting/bookkeeping experience preferred. Send resume to 80 Highway 359, Cardwell, MT59721. Wage DOE. 34-2-b

Continental Construction is currently looking for experienced frame carpenters. Wage DOE. EOE/DFW. Fax resume to 406-522-7282 or email jobs@ccnapples.com 34-3-b

Bartender Wanted: Goldmine Lounge & Casino in Cardwell. Schedule will vary. Apply in person at location. 32-tfc-b

SPORTSMAN'S LODGE IS NOW HIRING FOR ALL POSITIONS. Please stop by for an application or drop resume off at 310 Hwy 287. 26-tfc-b

HELP WANTED: Rainbow Valley Lodge Housekeeping positions available for this coming season. Full or part-time. Top wages DOE. Apply in person. 682-4264 28-tfc-b

Madison Valley Manor is accepting applications for a Full-time Housekeeper. 32-40 hrs week plus benefits. Call Tom Burt, 682-7271 for more information. EOE 33-2-b

Yellowstone Custom Country Homes is seeking experienced carpenters. 842-5068 33-tfc-b

Part-time worker needed for grounds maintenance in the Alder area 12-15hrs/wk. Call Wally at 842-5482 34-tfc-b

Madison Valley Manor is hiring experienced Certified Nursing Assistants. Full-time plus benefits. Wage may vary based on experience. Contact Christine Canterbury at 682-7271. EOE 33-2-b

REAL ESTATE

FOR SALE BY OWNER : Lindal Cedar home in North Meadow Creek area, McAllister. Two bedrooms, two baths, woodstove, 20 acres, partially fenced for horses with 12 x 24 run-in-shed. 1348 square feet. \$310,000 Call: 864-710-8065 34-3-p

NEWLY REMODELED HOME at Rainbow Point with private access to Ennis Lake. Info @ www.ennislakefront.com or 406-581-7820. 22-tfc

Ennis House FSBO Summer home or residential log home. 1400 sq./ft. 3-5 bed, 1 bath, full basement partially finished, metal roof, 2 lots, mature trees, own well, wood heat. \$152,000 406-595-4224 33-4-p

HOME FOR SALE: 3 bedroom, 2 bath, new everything, extra large master, landscaped Sheridan home. \$149,000. Call 916-600-3018 or 406-842-7737. 5-tfc

HOME FOR SALE: 1200 sq/ft. with 2-car attached garage and 30x40' shop. 3bed/2bath on 1.04 acres in Troutdale II 406-564-8552 32-tfc-b

LOTS FOR SALE: 4 connected lots in Virginia City. Great location for a cabin. Call 702-271-5694 and ask for Dave. 34-tfc-b

WANTED

WANTED: JUNK CARS / FARM EQUIPMENT - Free removal. Call 684-5551. 11-tfc

RANCH WANTED M A D I S O N - RUBY-BIG HOLE I have a qualified Buyer looking for a 500 to 1000 pair cow/calf operation. If you would consider selling please contact Katie L. Ward, Broker. 406-596-4000 DIRECT 33-4-b

SERVICES

DEEMO'S MEATS Don't stress your livestock by taking them to slaughter. Let slaughter come to your ranch. Call 682-7306 or 600-0320 and ask for Scott. 16-tfc-b

PAYING CASH for running or not cars, trucks, buses, tractors & more. Also accepting donated vehicles. FREE towing, also FREE removal of all metal products. 406-548-1622 32-4-b

MAIN STREET PROFESSIONAL SERVICES Let us relieve some of the stress from your life! All phases of bookkeeping Accounts Payable/Receivable Payroll Account Reconciliation And Much More! Call 842-5822 for an appointment. 401 S. Main Street, Sheridan. 46-tfc

MEAT MONTANA LLC RETAIL, WHOLESALE, CUSTOM MEATS Beef, Pork and Lamb. We do it all. State Inspected. 32 years experience. LOWEST PRICES. HIGHEST QUALITY. NO HIDE FEES Call Rudy today. 406-548-7328 You'll be glad you did. 483 North Meadow Creek, McAllister, MT Catch us at the Ennis Farmers' Market every Friday night: 5pm - 7p Local Beef, Pork and Lamb BBQ Grass-fed Hamburgers 34-tfc-b

WINDOW CLEANING Gary Kinney 843-5486

Expert Tree Care 406-683-5592 406-865-0000 60' Lift Truck **Flag Pole Maintenance**

LOST & FOUND

Barn owners in Ennis are missing a cat. 3 year old Calico with long white legs, very long black tail, and brown and black coat. The tip of her right ear is missing. Owner Peggy Todd is 91 and misses her cat very much. Please call 682-4349 if you have any information. 30-TFC-F

FOUND: Baseball Mitt 682-4360

YARD SALE

MULTI-FAMILY GARAGE & MOVING SALES Friday & Saturday June 21 & 22 8:30am-4pm Lawn Tractor and Snapper string Trimmer. Household and garage items too numerous to mention. Troutdale II, 22 & 24 Coachman Lane 34-1-p

STORAGE SALE MADISON STORAGE #81 ENNIS June 21-22-23 9am-4pm Too much to list all: Table saw, compressor, cap collection, sanders, routers, assorted hand tools, arts & crafts, household goods, hunting & fishing goods, automotive items, 440 sq. ft. ceiling tiles. 34-1-p

GARAGE SALE JUNE 22 & 23 10 Wood Duck Road (Pintail Ridge) Pre-Moving Sale 9am - 4pm . 2 Entertainment centers, highchair, crib, dishes, holiday & craft items, books, household items, special dresses (prom, bridesmaid, cocktail, mother of the bride), shoes, yard décor, patio furniture. 33-2-b

ENNIS FLEA MARKET On hold until further notice. 33-tfc-b

AUCTION

GOTTA-SELL AUCTION June 29, 2013 17 Jessica Lane, Sheridan View @ 9 a.m. Auction 10 a.m. Household items, antiques, KUBOTA L2550, 19ft. Northwood camp trailer, tack, outdoor items & much more! www.swmontanaauctions.com 34-2-b

FREE

FREE KITTENS: Siamese cross. Call Teresa 685-3392

www.AbleEstateSales.com WE BUY ESTATES or Manage Your Sale **FREE APPRAISALS**

See Website for Photos & Locations **CALL MIKE1-877-339-3229** Sheridan Montana 842-5251



OUTPOSTEVENTS.NET

C4 Thursday, June 20, 2013

register. 10-4 p.m.

Celebration BBQ, Sheridan

Head over to the Ruby Valley Swimming Pool for free swim from 1 – 6 p.m. and a complimentary BBQ starting at 2 p.m. Come celebrate summer. 842-5272

Historical Stories, Bannack

Join Patrick Danahy as he brings to life poignant and entertaining stories from the past. 2 p.m. Bannack State Park.

Grand Victorian Ball, Virginia City

5:30 p.m. Tickets by calling 682-4935.

MRF Gala Banquet, Sun West Ranch

The 11th Annual "Guardians of the River" Gala Banquet will be held on the banks of Madison River with host Sun West Ranch. Reservations are required and tickets can be purchased by calling 682-3148.

Broncs and Barrels, Whitehall

Head over to the Rodeo Grounds for the Annual Bucking Horse Futurity and Barrel Racing. Sponsored by the Whitehall Chamber of Commerce.

White Trash Bash, Virginia City

Join the folks at the Bale of Hay for live music and more. For more info call 843-5700 or visit baleofhaysaloon.com.

Movie Night, Ennis

Madison Theatre presents: "Epic", an animated film rated PG. Movie starts promptly at 7 p.m. 682-4023

Live Music, Norris

Val Goodrich (Blues) 7 p.m. Norris Hot Springs. For more info please visit www.norrihotsprings.com

Live Music, Ennis

Dan Dubuque, the one-man soul band, is at Gravel bar. 9 p.m. 682-5553 or visit gravelbarmt.com

SUNDAY JUNE 23

Fundraiser, Ennis

The 3rd Annual Hulen's Swaffest will take place at 9 a.m. at Madison Meadows Golf Course. Open to everyone, come golf, remember our great friend Hulen Cocker and raise funds for another great friend, and PGA professional, Patrick Stoltz. Call 682-7468 to sign up and for more details.

Live Music, Norris

Bozo Mojo (Acoustic/Eclectic) 7 p.m. Norris Hot Springs. For more info please visit www.norrihotsprings.com

Fiddle Concert, Virginia City

Sandy James and the Junior Fiddlers visit Virginia City to perform tunes free for our public. 5 p.m. at 106 E. Wallace, East of the courthouse. Performance generously hosted by the VCPA.

MONDAY JUNE 24

Garden Kid's Club, Sheridan

Jackson's Garden is planning some fun things for the kids this summer. Every other Monday at 10 a.m. For more info and to sign up please call 596-0463.

Planning Board Meeting, Big Sky

The Madison County Planning Board meeting will be held at 6 p.m. in Big Sky. Location to be determined.

WEDNESDAY JUNE 26

Writing Class, Ennis

ECE is offering "Discovering My Written Voice: Exploring and Creating the Short Story" writing class starting today through July 24 at 6 p.m. at Ennis School. 682-4258 to register. Visit outpostevents.net for a complete description of the class.

THURSDAY JUNE 27

Training Workshop, Ennis

Join this 8-week training course to prepare for a 5k run/walk. Train at your own speed but with support! End the course with an entry in the 4th Annual Run the Big Hole on August 17. Group training weekly. 682-4258 to register.

Regional Meeting, Dillon

The Southwest Montana Tourism Region Meeting will be held at the Forest Service Building, located at 420 Barrett St. at 10:30 a.m. Please see outpostevents.net for complete details or email info@southwestmt.com

World Religions Workshop, Ennis

What is the difference of the many religions of the world? The second workshop on this topic will be held at 1 p.m. at Ennis School. Come with questions. 682-4258

Headwaters Country Jam, Three Forks

A 3-day Country Music Festival. June 27 – 29. Call 800-555-8989 for tickets and info.

Live Music, Virginia City

James McMurtry is back in the area. Catch him

at the Wells Fargo Steakhouse at 10 p.m. 843-5556

FRIDAY JUNE 28

Headwaters Country Jam, Three Forks

A 3-day Country Music Festival. June 27 – 29. Call 800-555-8989 for tickets and info.

Community Speaker Series, Twin Bridges

The second installment of this summer series will take place at the Madison County Fairgrounds. Join Terry McEneaney, Ornithologist Emeritus from YNP, as he talks about Sandhill Cranes. This free event will include a BBQ to start at 5:30 p.m. For more info call Kris at 682-3437 or Rebecca at 842-5741 ext. 106.

Live Music, Norris

Shea Stewart (Americana) 7 p.m. Norris Hot Springs. For more info please visit www.norrihotsprings.com

SATURDAY JUNE 29

Ruby Weed Day, Alder

Grab your spades, shovels and gloves (or any spray equipment you have) and join in the efforts to rid the Ruby River of weeds. Meet ½ mile south of Ruby Dam at 8 a.m. Bring water and a light lunch, as there will be a BBQ served after the workday.

Appreciation Picnic, Sheridan

3 Rivers Communications is hosting their annual Customer Appreciation Picnic in Sheridan City Park at 11:30 a.m. There will be food, fun and the Ruby Valley Boys for everyone's enjoyment.

Please join us for
SARA DUNHAM'S
80th
BIRTHDAY CELEBRATION

JULY 6, 2013,
FROM 2 TO 4 P.M.
Cake and drinks will be served.

CHARLIE AND KAYCEE
GILMAN'S RESIDENCE
47 Ruby Road, in the beautiful
town of Ruby.

*Kaycee - 406-842-5311
No gifts please - the gathering of
family and friends is the most
precious gift of all.*

DR. SARAH KIRKPATRICK
O.D., F.A.A.O.



Eye Examinations
with Dr. Sarah

406.682.4208

222 E. MAIN, 1C ENNIS, MT 59729

RALPH HAMLER
LICENSED SANITARIAN
Septic Design &
Subdivision Applications

406-842-5788
Cell: 406-596-0437
Sheridan, MT
ralphhamler@gmail.com

GRAVEL BAR

DAN DUBUQUE
THE ONE-MAN SOUL BAND

SATURDAY
JUNE 22
9:00 PM

682.5553

Now Accepting New Clients!

The AGENCY Insurance Division

PH: 682 4202
or quote it yourself at
www.agencyinsdiv.com

We work with Allied (Nationwide), Chubb, CBIC, The Hartford, Kemper, MetLife auto and home, Progressive, Safeco, State Fund, Travelers and more!

Offering Auto, Business, Farm and Ranch, Home, Workers Comp

Let us take the pain out of Insurance



Ty Moline
Agency Insurance Division
Big Sky, Ennis and the rest of Montana
Big Sky 993 9242 / Ennis 682 4202

Three
Great Services Under One Roof!



Locally Owned & Operated
Free Estimates - Licensed & Insured

Call Mike McKitrick Today!
406-682-4529

100 Prairie Way #2 - Ennis, Mt 59729

NORRIS HOT SPRINGS
50-MILE GRILL



ISLAND OF NORRIS CAMPGROUND
now open!

STARTING JUNE 1ST:
10-10 • closed Tuesday only

50-MILE GRILL
local-organic-sustainable-fresh
norrihotsprings.com
406.685.3303

South West Septic
Locally Owned & Operated

For All Your Septic & Portable Toilet Needs

We want your stinkin' business!
Get your butt on the schedule.

www.swsmt.com • swsmt@hotmail.com
Ennis 682-7854 • Sheridan 842-7854 • Cell 596-7854

HARDY DRYWALL

FULL SERVICE DRYWALL, PLASTER & STUCCO

406-596-3137

ENNIS GARAGE

Complete Auto & Truck Repair

35 Years Experience
9-5 Monday - Friday
(across from Titan Construction)

682-5006
420 Hwy 287
Dick Lemirande

FOR ALL OF YOUR
EXCAVATION NEEDS

with attention to detail
& quality at a fair price.

JDL CONSTRUCTION CO.

SHERIDAN, MT • 406-842-5112
WWW.JDLCONSTRUCTION.COM

Screened Top Soil
Landscape Rock
Crushed Gravel

Serving Southwest
Montana Since 1978