

The Madisonian.

THE LOCAL NEWS OF THE MADISON VALLEY, RUBY VALLEY AND SURROUNDING AREAS

Montana's Oldest Publishing Weekly Newspaper. Established 1873

75¢ | Volume 141, Issue 14

www.madisoniannews.com

Thursday, January 31, 2013

LET 'EM BURN



Twin Bridges Rotary Club members Nick Novich (left) and Frank Colwell ignite the annual Christmas tree bonfire Wednesday night at Jessen Park. Photos by Ben Coulter

Rotary Club bonfire lights up Twin Bridges with community spirit

Ben Coulter
THE MADISONIAN
ben@madisoniannews.com

Several members of the Twin Bridges community gathered at Jessen Park on Wednesday night for the Rotary Club Christmas tree burn and tailgate party, an annual event more than twenty years running that brings friends and neighbors together to start the New Year by setting their old Christmas trees ablaze.

As the sun went down, children of all ages laced up their ice skates and took to the frozen pond while Rotary Club members helped set up tables for a potluck dinner. With a splash of fuel on the burn pile and the touch of a propane torch, the bonfire lit up the park as the cold darkness of night set in.

Between the heat from the fire and the delicious assortment of steaming hot food, ranging from coffee and cocoa to multiple homemade chili recipes and hotdogs grilled on a pitchfork, the warmth of Twin Bridges community spirit could be felt radiating from Jessen Park as the icy Beaverhead River flowed quietly nearby.

Rotary Club member Frank Colwell said the bonfire tradition has always been a way of taking out the old and bringing in the new. He added that everyone who showed up received a warm welcome in more ways than one, no matter who they were or from what direction they came.

During a dark and often difficult time of year, the Christmas tree burn and tailgate party was just another opportunity to bring people together and reunite the close-knit Twin Bridges community. Besides, Rotary Club member Rand Bradley said of the once-decorated evergreens as they went up in flames, "it's better than taking them to the dump!"



Orange sparks fly from a Christmas tree bonfire Wednesday night at Jessen Park in Twin Bridges.

Harrison student charged with criminal endangerment after guns found in backpack

Ben Coulter
THE MADISONIAN
ben@madisoniannews.com

A 14-year-old Harrison student was arrested Friday afternoon and charged with criminal endangerment after he was found to be in possession of two handguns on school property.

According to a statement issued Sunday by the Harrison School District Superintendent Fred Hofman was approached by a female student shortly after 3:00 p.m. who claimed that she had heard another student was carrying a gun in his backpack. Hofman and school staff reacted to the information quickly and efforts were made to locate the student immediately.

Because classes had already been released for the rest of the day, students were in the process of preparing for Friday night's basketball games against Lima and Cardwell. Members of the community were already beginning to arrive in anticipation on the evening's matchup, and Hofman said in the press release that because of these circumstances the situation did not allow for any lockdown procedures to be used.

School staff soon learned that the student had left the property to walk a few blocks down the street to the store, and a staff member notified Hofman via text message when the student was

Turn to GUN on pg. 2

Commissioners postpone taking action on growth policy update

Ben Coulter
THE MADISONIAN
ben@madisoniannews.com

Following a lengthy public hearing Tuesday afternoon on the Madison County Growth Policy Update, the Madison County Board of Commissioners took no action on the matter in the hope of reviewing comments from the public and making possible word changes to the document before meeting again no later than the end of February.

Commissioner Jim Hart said that the people who opposed the growth policy update were con-

cerned about certain words that should at least be reviewed and possibly changed.

"Those who voiced their opposition to the Growth Policy were concerned about future regulatory action, even though they heard the comment that the growth policy has no authority, per se," said Hart. "Those who spoke in favor of it mostly commented on the fact that we have a growth policy right now that's been in place for 40 years, and the few changes that were recommended by the Board would

Turn to POLICY on pg. 2

Commissioners approve mill levy election for Thompson-Hickman Library

Ben Coulter
THE MADISONIAN
ben@madisoniannews.com

At their regular Tuesday meeting in Virginia City the Madison County Commissioners carried a motion as recommended by the Madison County Library Board authorizing a one-time, six mill levy for the expansion of the Thompson-Hickman County Library.

The expansion is necessary for a number of reasons, including compliance with the American Disabilities Act and the need for hot water in the historic building that was originally built in 1918. Limited space in the library means that archival materials and historical documents are stored in various non-climate controlled facilities throughout the county, and prohibits the expansion of the

general collection. The library is also in need of an upgrade to the electrical system in order to continue providing educational and program opportunities.

The projected cost for an addition to the library is \$650,000, and the levy of 6 mills would raise approximately \$464,136 toward that goal. The tax increase for a resident with a home valued at \$100,000 would be \$8.30 and for a \$200,000 home the tax increase would be \$16.60.

Currently, the Madison County Library Board has raised nearly \$24,000 to date. That amount, combined with \$33,000 pledged by the Madison County Commissioners and \$37,878 held in the library depreciation reserve fund, would be matched by a grant from the Keneda Foun-

Turn to LIBRARY on pg. 2

Commissioners review plan for Twin Bridges Airport

Ben Coulter
THE MADISONIAN
ben@madisoniannews.com

At a December meeting in Virginia City, the Madison County Commissioners met with Rick Donaldson of the civil engineering and surveying firm Robert Peccia and As-

sociates in Helena to discuss final changes to the Planning Narrative for the Twin Bridges Airport.


The Airport Layout Plan (ALP), developed over the years for the Twin Bridges Airport, shows potential for future development such as runway widening and lengthening as well

as apron expansion and widening for the taxiway area. Part of this plan includes pavement rehabilitation projects for the existing surface, so the Federal Aviation Administration (FAA) supported a planning effort to determine whether or not any of the improvements proposed in the ALP were justified at

this time.

Donaldson explained that an FAA review of the planning report for the Twin Bridges Airport indicated that it would be difficult to justify a G2 classification for the facility at this time. While this means that the FAA does not support widening

Turn to AIRPORT on pg. 2



RUBY VALLEY NATIONAL BANK

P.O. Box 417 • Twin Bridges, MT 59754 (406) 684-5678

P.O. Box 587 • Sheridan, MT 59749 (406) 842-5411

Member FDIC

Banking **YOUR** Way - When **YOU** Want it

BillPay @ www.rubyvalleybank.com

WebStatements


Visa® Check Card

24 Hour Better Banking @ 888-842-5121

TABLE OF CONTENTS

Local News-----A3	Sports-----B2
Letters to the Editor/	Health & Wellness-----B7
Opinion/ Obituary-----A4	Calendar-----C1&C4
Comics/Games-----A6	Public Notices/
Lifestyle-----B1	Classifieds-----C2-C3

Visit us online at www.madisoniannews.com



Conforming Mortgage Fixed Rates

30 Years - .000% Points

3.490 % Rate 3.624% APR

15 Years - .000% Points

2.750% Rate 2.987% APR

Rates subject to change without notice. APR calculation is based on a \$200,000.00 loan amount with a 1% loan origination fee, \$975.00 underwriting fee, \$295.00 document processing fee, Mers fee \$11.95, \$15.00 flood determination fee, \$4.00 transcript fee, 15 days of prepaid interest and *discount point fee as stated above.

AUTO LOANS

AS LOW AS

4.5% rate
4.879% APR

Rates subject to change without notice. APR calculation based on \$20,000.00 loan amount with a \$149.00 loan fee, 48 payments of \$459.67 on approved credit.



Office: 406.682.4215
Toll Free: 888.622.4215
213 E. Main St
Ennis, MT 59729



WWW.BANKINGONTHEFUTURE.COM

GUN from pg. 1

spotted returning to campus. Hofman confronted the student as he attempted to reenter the building and secured his backpack, which the student had left outside, before escorting him inside to the office.

Once the student was in custody in the school office he admitted to Hofman that he did

in fact have two handguns in his backpack, one of which was a loaded .357 Magnum and the other a .22 caliber revolver. Harrison High School teacher and freshman class advisor Josh Kelton assisted Hofman by unloading the firearm, and assistant principal Sheri Heavrin called local authorities and the student's parents.

The student was then taken

into custody by the Madison County Sheriff's Department and was cooperative throughout the process, the press release said. Madison County Attorney Chris Christensen said on Monday the student was charged with criminal endangerment in youth court.

"The school will handle the matter in accordance with school policy and will do what is nec-

essary to protect our students," Hofman said in the press release.

"I could not be more proud of the student who had the courage to come forward with the information or more proud of my staff, who remained calm and worked together without creating panic to secure the situation quickly and keep the community members and students in the school, safe," said Hofman.

POLICY from pg. 1

not alter that 40 year history."

During a meeting on Monday evening the Planning Board reviewed and discussed a summary of all the correspondence to the Madison County Com-

missioners related to the Growth Policy Update. Planning Director Charity Fechter said she felt that there is a basic misunderstanding of what the growth policy is, emphasizing that it is not intended to be a regulatory

document but rather to provide more effective guidance for local decisions on growth, development and conservation over the next 5 to 10 years.

Hart added that the Growth Policy Update is important for

local communities in planning for future growth in Madison County because it is necessary to exercise a degree of common sense with input from the public when doing so.

LIBRARY from pg. 1

ation for a total of \$182,748.56. A stipulation that must be met is that the Board must have funding for the expansion secured by December 31, 2013 in order to receive the Keneda grant.

The Library Board had originally hoped to fund the project

entirely from private donations, but realized that they would not be able to collect enough money to be eligible for the Keneda grant through private donors alone.

"If we were going to see this project to reality, we felt that we couldn't wait any longer and this was our last alternative," said library board chair Janet Doorn-

bos.

County library director Joanne Erdall-Van De Riet said that while the expansion project has support from all around the county, the fundraising aspect turned out to be a much bigger project than anyone anticipated.

"It was my hope to do this totally without taxpayer money,"

she said, but in reality the project cannot move forward funded entirely by private donations.

Commissioner Dan Hoppel suggested that any additional funds generated by the mill levy once the expansion was completed should be dispersed equally among the other community libraries in Madison County.

SKATE BREAK



Members of the Twin Bridges community enjoy ice skating Wednesday night at Jessen Park during the Rotary Club's annual Christmas tree bonfire. Photo by Ben Coulter

AIRPORT from pg. 1

ing of the runway and taxiway or expansion of the parking apron at this time, they would support a lengthening of the runway provided that funding for the project is available.

The planning report used

surveys, fuel records, instrument procedure records, FAA forecasting and other sources to establish the proper airport reference code for design purposes, Donaldson said in a press release. A proposal to rehabilitate the existing pave-

ments and possibly extend the runway has improvements tentatively scheduled for 2014.

Following the discussion, Commissioner Dan Hoppel moved to agree in principal with the revisions suggested by the FAA to the Planning Narra-

tive for the Twin Bridges Airport, noting that final approval of the revisions will be made once the commissioners receive the final document. Commissioner Jim Hart seconded the motion and the motion carried.

river gorge



Crossing over the Madison River headed south from Ennis. Taken Jan. 19, 2013. It was just after the weekend of single digit temperatures, the start of the river 'gorge.' Photo submitted by Keri Kensinger

Eagle Property Management
JANET L. GATES
Experienced Since 2002
Year Round Full Service Property Maintenance
P.O. BOX 998 Ennis, MT 59729
406-600-4347
imjanetplanet@yahoo.com

"Stick With The Best!"

BOWMAN APPLIANCE SERVICE

1035 S. Main St. • Butte, Montana 59701
(406) 723-6797
We Work On All Major Brands.

In Ennis, Sheridan and Twin Bridges and surrounding areas
EVERY WEDNESDAY

B & E CUSTOM BUILDING & DESIGN
CONVENTIONAL FRAME HOMES
COMMERCIAL
REMODELS & ADDITIONS
HAND-CRAFTED LOG HOMES

*all phases of construction
design and consulting*

Brad Bullock 581-4117 Office 682-7942 Ken Evans 490-2758

e-mail: bande@3rivers.net | www.bandeconstruction.com

Madison Valley Plumbing & Heating

Serving Madison County for over 25 years

- New Construction
- Service Work
- Winterization
- Drain Cleaning
- Remodels

Jerry Singleton
Master Plumber #811
Phone: 406-682-7913
Cell: 581-3025
P.O. Box 1115 • mvp@3rivers.net • Ennis, MT 59729

CROY construction

Licensed - Insured - Professional
Custom Homes - Residential - Commercial

Gary Croy
owner

406-581-3531 (cell) or 406-682-7236 (office)
P.O. Box 63 - Ennis, Montana
bid@3rivers.net

Archery Experts



Reilly Lannen (Sweetgrass County), Kenny Conner (Sweetgrass County) and Tucker Weber (Ravalli County) participate in an all day archery shoot for kids and adults at the Ennis Elementary School gym.



Photos by Allison Clark

Participants gather at the Ennis Elementary Gymnasium for the 5th Annual Madison Valley 4-H Shooting Sports event.

Archery event draws young shooters from around the state

By Allison Clark
FOR THE MADISONIAN

Almost seventy-five participants, from 9-19 years of age showed up at the Ennis Elementary Gymnasium for the 5th Annual Madison Valley 4-H Shooting Sports event last Saturday. Tanya Engle, a nationally certified archery instructor for 4-H, officiated the event.

The shooters came from all over the state, including Billings, Corvallis

and Hamilton to participate. With 96 available spots open, some kids were able to shoot in two or three different bow divisions.

Several Madison County residents placed in the competition. Among them were Bryce Williams, who placed first in Primitive Bow as well as Bare Bow for the 9-10 age group. Ruby Rossiter of Madison County also placed second in that age group for Bare Bow.

Josh Nye place first in the 15-

18 age group for Bare Bow. Reilly Green place first in Limited Bow for ages 9-10 and Cade McParland placed fourth.

In the Bow Hunter category, the most popular of the divisions, Jackson Nye placed first in his 9-10 age group and Andie Pierce placed second. George Ball placed third for the 15-18 age group.

While Engle compiled scores, parents and 4-H leaders were able to participate in an Adult Fun Shoot.

MADISON COUNTY SHERIFF'S DISPATCH LOG

January 20, 2013 thru January 26, 2013

January 20, 2013

Received report of abandoned vehicle at Mt Hwy 84 MM 2
Coroner dispatched to 800 blk Mt Hwy 84
Received report of death investigation at Beehive Basin
T/s on Main St, Twin Bridges
Deputy dispatched to an alarm in 400 blk S Meadow Creek Rd
Deputies dispatched to domestic complaint in 100 blk N Main St, Sheridan
Deputy dispatched to welfare check in 200 blk Main St, Sheridan
Dispatched EA to Redtail Hawk Ln

Received theft complaint in 600 blk Madison Ave
Received dog complaint on in 10 blk Upper Ruby Rd
Received report of vehicle/deer accident on Mt Hwy 287 MM 35
Received an alarm on Nye Rd
Dispatched TBFD to an alarm in 500 blk E Bench Rd
T/s on US Hwy 287 Norris
T/s at US Hwy 287 MM 53
T/s on US Hwy 287 at MVMC
T/s on US Hwy 287
T/s at US Hwy 287 MM 53
T/s at US Hwy 287 MM 67
T/s at US Hwy 287 MM 74
T/s at US Hwy 287 MM 55

January 22, 2013

Dispatched RVA to 100 blk

Mill St
Received request for welfare check in 200 blk Madison Trl
Received unfounded 911 call
Dispatched EA to 200 blk William St
T/s at Mt Hwy 41 Mm 51
Received unfounded 911 call
T/s at Mt Hwy 41 N MM 44

January 23, 2013

T/s at US Hwy 287 MM 53
Received report of lost property on Parrot Ditch Rd
Received animal complaint in 100 blk Bench Rd
T/s at US Hwy 287 MM 67
Dispatched TBQRU & RVA to 200 blk N Bridge St
Deputy dispatched to juvenile matter in Sheridan

January 24, 2013

T/s at US Hwy 287 MM 70
Received animal complaint at Mt Hwy 41 MM 20
Received animal complaint on US Hwy 287 at S Meadow Creek Rd
Received an alarm in 20 blk Ennis Lake Rd
Received animal complaint at Mt Hwy 41 MM 21
T/s at Mt Hwy 41 N MM 47
T/s at Mt Hwy 41 MM 46
Received animal complaint at Mt Hwy 41 MM 22
Deputy dispatched to suspicious circumstances complaint on Duck Ln

January 25, 2013

Deputy dispatched to wildlife complaint at Mt Hwy 287 MM 34
T/s at Mt Hwy 359 MM 9
Coroner dispatched to 2300 blk Mt Hwy 287
Received an alarm in 100 blk W William St
Deputies dispatched to suspicious circumstances complaint in 100 blk Harrison St
T/s at Mt Hwy 41 S MM 48
Dispatched SFD & TBFD to 100 blk N Main St, Sheridan
Dispatched SFD & RVA for life flight at RV Hospital

January 26, 2013

Received animal complaint at Mt Hwy 55 MM 2

Deputy dispatched to wildlife complaint at Valley Garden Ranch
T/s on W Hamilton St
Received unfounded 911 call
Dispatched RVA for transfer to Butte
Received dog complaint in Ennis
T/s on Mt Hwy 41 MM 53
Deputy dispatched to suspicious circumstances complaint across from Red Mtn. Campground

The Sheriff's Office made 20 traffic stops and received 39 calls for service between January 20, 2013 and January 26, 2013.

Logging traffic from timber sale increases in black mountain area

From David Abrams
BLM WESTERN MONTANA DISTRICT

Officials from the Bureau of Land Management's Dillon Field Office advise the public that logging operations from a timber sale in the Black Mountain area

are underway. As part of the Black Mountain Salvage Timber Sale located in the Pioneer Range, logging trucks will be hauling on segments of USFS roads 2400A, 2400, and 7467 to Hwy 278 at Badger Pass, and onto Interstate 15. These operations will be in

effect through early spring. The public is advised to use caution when traveling these roads and to watch for heavy equipment. Short delays may also be expected. For more information, contact Emily Guiberson, Forester at 683-8000.

Ennis hosts Southwest Montana Honors Band and Choir

From Vickey Gordon

On Feb. 4, high school music students from eleven schools in Southwestern Montana will come together for daylong rehearsals, culminating that evening in a joyous concert at 7 p.m. in the Ennis High School gym.

Honors Choir will sing under the direction of Micah Hunter, currently the Director of Choirs at Stillwater Christian School in Kalispell. Micah grew up in Hot Springs, earning his Bachelors in Music Education from

MSU in 2006. While teaching at Stillwater, he completed studies for his Master's in Music Education and a Doctorate in Sacred Music. Honors Band will perform under the baton of Dr. Timothy Dueppen, currently the brass studio professor and Brass Choir director at MSU. Born in Los Angeles, Timothy earned a Bachelor's in Music from UCLA, a Master's in Music Performance and Literature from Eastman School of Music and a Doctorate from University of Houston. He has toured

extensively throughout Canada, Mexico, South America and the US with a variety of brass groups and jazz greats. He is an active freelance trombonist. Join Micah, Timothy and the high school music students of Ennis, Sheridan, Twin Bridges, Deer Lodge, Whitehall, Harrison, Willow Creek, West Yellowstone, Butte, Philipsburg and Stillwater Christian for their concert on Feb. 4 at 7 p.m. in the EHS gym to celebrate a gathering of young musicians performing a variety of music for your listening pleasure

Harrison School 2nd quarter honor roll

HS "A" Honor Roll

Kyra Andrews
Chas Buus
Britt Cooper*
Taya DeFrance*
Delaney Galloup
Kolton Moe
Alecia Panagakis
Sierra Panagakis
Garrett Petersen
Kristen White*
Becca White*
Tori Wilson*

HS "B" Honor Roll

Gabriella Arcangeli
Oliver Blanchard
John Brennan
Casey Collins
Don Elpel
Hailey Hokanson

Dylan Lehman
Jarrod Nye
Megan Skillman
Levi Strickland
Jon Strong
Steven Strong
Jacob Traucht
Taylor Twofeathers
Tyler VonBergen
Zane VonBergen
Jessica Ypma

JH "A" Honor Roll

Lane Buus
Doug Christensen
Derik DeFrance
Josie Hokanson

JH "B" Honor Roll

Alexys Bacon

Zach Jackson
Jakob Nye

*denotes 4.0

PERFECT ATTENDANCE

High School
Kyra Andrews
Britt Cooper
Alecia Panagakis

Junior High
Lane Buus
Doug Christensen

Elementary
Sage Buus
Kayley Christensen
Marin Ore

Wishing to thank the appropriate people for donation

Dear Editor,

I find it necessary to correct some misconceptions in the article in the Jan. 24 issue of The Madisonian, which was submitted by Don Black regarding Madison Valley History Association meeting held on Jan. 17 at First Madison Valley Bank. The program for the meeting was the Bear Creek School. The speakers for the program were Mona Durham and Karen Shores. My brother, Larry Zabel, had painted a fine painting of the schoolhouse as it might have looked in 1909 for the Ranchlands Group's annual noxious week abatement fundraiser shortly before his death. This original painting was sold at auction and was one

of the final events my brother was able to attend. My daughter, Kathy Carpenter, was a great help to my brother during his final months. She and her partner, Randy Green, operate an art support and fine art reproduction printing business here in Ennis under the name of Mountain Creative Concepts. They have worked for and with Larry for a number of years, producing nearly all of the giclees (digital reproductions on canvas) of his and others' paintings. Larry suggested during his final days that they might produce a giclee of the Bear Creek School painting for the schoolhouse. They did this and Don Neville made a fine frame for it. (Don and I are both long-time members of the His-

tory Association.) It seemed the perfect time to present this at the History program, so I took it there and presented it to Mona Durham for the school. The nice article and picture in The Madisonian states that I was the one who provided this giclee. I wish to correct this misinformation. Kathy and Randy have provided this piece and a number of others at their own expense to some fundraisers in the area, so I felt it necessary to write this letter to set the records straight.

Beverly (Zabel) Claassen
Ennis

Community participation is critical to community success

Dear Editor,

Were you aware that the Floating Flotilla and Fish Fantasies' River Parade and the Friends of the Library Garagara may not happen this coming year? That the Ruby Valley Ambulance and Ruby Valley Search and Rescue are in dire need of volunteers? Did you know that the Ruby Valley Chamber of Commerce and Agriculture was considering dissolving for lack of participation? All these groups are struggling and holding together by a thread because of lack of participation!

Take a moment to consider what these valuable resources' dissolution would mean to you and the community. What would you lose?

You may not feel like you are needed but you are! Volun-

teers are the lifeblood of rural community action. In an environment where paid officials are few and the resources to hire help are sparse, little happens without the leadership and labor of unpaid citizens. Your fresh ideas are the essence of a thriving community, and additional hands can help renew the strength of those who have carried the load in the past. Because of past discrimination or just the belief that community development is someone else's job, citizens may be reluctant to step forward but Community participation is critical to community success.

Community participation is far more than a requirement. It is a condition for success and progression. Studies have documented that communities that have numerous volunteers that

engage in local civic, nonprofit, or philanthropic groups raise more resources, achieve more results, and develop in a more beneficial way.

Community participation is critical to community success! Participation is the soul of an empowered community! And your ultimate buy-in helps to embed that change into the fabric of the community for future generations. Find out how you can help. Contact a community group today. If you're not sure how you can help, contact your local chamber and let them help direct you to a local civic, nonprofit, or philanthropic group that you can share your talents with.

Jack Leber
Twin Bridges Community
Association VP

Local government is the last best hope for America

Dear Editor,

My mother always told me that life is just too short to spend attacking those who don't agree with your political or philosophical perspective. Now there was a very liberal lady with some common sense! I am amazed how some on the far left that scream the loudest about

free speech and label themselves as "liberal" are often the most narrow minded and likely to suppress ideas that threaten their utopian world. I really don't like to stoop to the level of my detractor, but I have to answer some very vitriolic and false accusations about personal and political philosophy. I am not anti-government and have never said

or thought anything of the kind! I believe in fiscally responsible, constitutionally based, federal government that respects the unalienable rights of the citizens and recognizes its responsibility to protect and defend their right to work and live in a free and non-repressive society. The proper role of the Federal government is that of protector, not

provider.

I believe in a strong state government that represents the interests and needs of the citizens within the state, protecting their rights to work, provide for their families, and live in liberty. I believe that county government was intended to be the most representative because it is the most accessible to the

citizens. County government should have a backbone and be willing to stand their ground when the State or Federal government fails to respect the rights or needs of the citizens. I believe that local government is the last best hope for an America based on the principles of freedom as outlined by our forefathers. Ms. Bradley has told me

that we need more regulation and that the Federal government is in many ways too restricted and should have more control. I totally disagree, but will jealously defend her right to say anything she wants.....as long as it's truthful.

Dan Happel
Harrison

OBITUARIES

Frances Lorraine Mills Larson Sept. 10, 1940-Jan. 25, 2013

Frances Lorraine Mills Larson, 72, passed away in the Bozeman Deaconess Hospital on Jan. 25, 2013, due to kidney failure. She was surrounded by her family.

Frances was born Sept. 10, 1940, in Salt Lake City, Utah, to Ralph and Catherine Mills. She was the oldest of eight children.

She served a mission in the North British Mission in England for the LDS Church. She also served a stake mission in

the Salt Lake Stake. She worked in the membership department of the LDS Church Offices and also in the Salt Lake Temple. She also worked as an aid for the Alder and Sheridan Schools, Virginia and Nevada Cities and was currently working at the Senior Citizens Center in Sheridan.

She met David Paul Larson in Garland, Utah. They were married in the LDS Salt Lake Temple on March 11, 1965. They moved

to Sheridan shortly after and made that their home. Born to this union were four children: Carol, Lynette, Randy, and Kevin.

She was an active member in the LDS Church. She was the first librarian in the Sheridan Branch, which later became the Sheridan Ward, where she continued as

librarian. She also served in the Primary, the Relief Society, as a Sunday school teacher. She was currently the ward organist and music director and the Relief Society pianist.

She enjoyed sewing, embroidery, crocheting, knitting, dancing (especially ballet) and music. She also sang with

the Ruby Valley Choral. She was an avid reader. She loved to travel and especially enjoyed going every year to Yellowstone Park with her family. She also enjoyed doing genealogy work.

She was preceded in death by her parents, brother Keith Mills, and brother-in-law, Steve Noren.

She is survived by: husband, David; children, Carol, Lynette, Randy, and Kevin; brothers Byron (Suititi), Lloyd (Penny), Darrel (Susan), Norman (Kristi), and Brent (Lori); sister, Arlene Forde; sister-in-law, Linda Mills; brother-in-law, Don Larson (Evelyn); sisters-in-law,

Jean Munk (Mike), Lara Noren, and Julie Larson. She is also survived by numerous nieces, nephews, and cousins.

Funeral services will be held Friday, Feb. 1 at 2 p.m. from the Church of Jesus Christ of Latter Day Saints at Sheridan with Bishop George Breakall officiating. Interment will follow in the Sheridan Cemetery. Memorials may be made in Francis' name to Sheridan Senior Center, Sheridan Public Library or a recipient of the donor's choice.

K&L Mortuaries of Sheridan is assisting with arrangements.



The Madisonian.

(USPS 325-340)

Montana's Oldest Operating Weekly Newspaper
Published Thursdays at Ennis, Montana for Madison
and South Jefferson Counties.

Owners/Publishers:

Matt & Susanne Hill, Chris & Erin Leonard

Advertising & Circulation Manager: Susanne Hill

Production: Erin Leonard

Advertising Sales Representative: Sara Racine

Reporter: Ben Coulter

Contributors:

Gail Banks, Gerry Mooney, Keith Axberg, Art Kehler

ENNIS, MONTANA

- Madisonian Editorial Policy -

Editorials are intended to acquaint our readers with the Editor's viewpoints on matters of public importance. Guest editorials and letters from readers (Letters to the Editor) reflect the opinion of the writers and do not necessarily reflect the opinion of the Editor or the staff of The Madisonian.

- Letters to the Editor/Readers Speak Policy -

The Madisonian encourages the opinions of readers on public issues and matters of local concern. Letters must be close to 350 words. Please include the writer's name, address and phone number. The Madisonian reserves the right to edit content for grammar, good taste and libel. We also reserve the right to reject or delay publications.

Announcements and letters of a commercial nature will not appear in this column.

- Display & Classified Advertising Policy -

The Madisonian accepts most advertising. It is up to us to decide on placement and content acceptability.

The advertisements in this publication are not necessarily the opinion of or supported by The Madisonian.

Please note: Our client information is confidential.

- Subscription Rates -

In-State - \$35.00/1 year or \$60.00/2 years • Out-of-State - \$45.00/1 year or 75.00/2 years (e-Edition complimentary with print subscription) • \$30 - e-Edition only • \$40 - 6 mos. print/1 year e-Edition

Postmaster: Please, Send Address Changes to:

The Madisonian, P.O. Box 365, Ennis, MT 59729

Phone 406-682-7755 ~ Fax 406-682-5013

Toll Free 1-888-238-7849

email: editor@madisoniannews.com

Hours of Operation:

Monday - Friday ~ 9-Noon & 1-5 - Unless Notified Otherwise

NEWS & ADVERTISING DEADLINES



5 p.m. - Monday
-After that, only if time and space permit.-



Frederick James Shively went to be with the Lord, Wednesday, Jan. 23, 2013, at his home, two weeks shy of 79. Jim, as he was always known, was raised in Roslyn, S.D., by his parents Harold and Cora Bell Shively. Jim's father was the Depot Master for the Soo-Line

Railroad, which his family lived above, leading to his life-long love of trains. After graduating from high school, Jim joined the Air Force during the Korean War as a helicopter mechanic in San Antonio, TX. He then worked at Boeing Field in Seattle where he met Ellen Montle who became the love of his life for almost 55 years.

His life long entrepreneurial spirit brought Jim and Ellen to Ennis in 1972 where they first bought the Longbranch Saloon with a partner. During the years they lived in Ennis, Jim owned and operated many businesses including several restaurants and Lick-a-Dee Lube, an oil change business. At the time, people told Jim he was crazy to open an oil changing business in a small

town. He proved them wrong. He was also the Ennis town judge and officiated many friends' weddings including one on an island in the Madison River. For nearly a decade Jim and Ellen served as the camp hosts for the Ennis campground where they met many life-long friends. In 2000, Jim and Ellen moved to Moscow, ID, to be closer to their daughter and grandchildren. Despite being retired, his social zeal inspired many friendships with his brochure delivery route until just this last fall.

Jim is survived by his wife, Ellen; daughter, Susan (Lowell) Kappmeyer of Moscow; sons, Adam (Linda) of San Carlos, Calif., and Paul of Portland, Ore.; and brother, Ralph (Micheline). He also leaves two grandchildren, Jesse

(Mallory) and Adam Kappmeyer; four nieces; two nephews; four grandnieces; and three grand-nephews. He is preceded in death by his parents; sisters, Helen and Eleanor; and brother, Buddy. He will be greatly missed by family, his loyal cocker spaniel and the numerous friends he made along his memorable journey.

The funeral service will be at 10 a.m. Monday, Jan. 28, at Trinity Baptist Church. There will be a potluck lunch after the service. Memorials may be made to the "Light a Candle" program at Gritman Medical Center, which provides comfort services for cancer patients. Arrangements have been entrusted to Short's Funeral Chapel in Moscow and online condolences may be sent to www.shortcutsfuneralchapel.net.

Bonnie Jane Workman Sept. 27, 1939-Jan. 20, 2013



Bonnie Jane Workman of Norris passed away Sunday, Jan. 20, 2013 at home surrounded by her loving family. She was born on Sept. 27, 1939 in Casper, Wyo., to Edd Lee and Viola May (Taylor) Garrett. Bonnie grew up on the "Ted Barlow Ranch", 10 miles west of Gillette, Wyo. She gradu-

ated high school in Gillette in 1958. She then went on to receive an Associate Degree in Nursing from Montana State University - Billings and a Bachelor Degree in Nursing from Montana State University - Bozeman. She was a student nurse throughout her Nursing education.

She married Dock Herbert Workman on April 15, 1972 in Sheridan, Wyo.

Bonnie worked as nurse at Billings Deaconess for 12 years and also the veteran's administration in Sheridan, Wyo. She was the second Nursing Administrator at the Ennis Hospital and also Director of Nursing in Helena and Bozeman. In addition to her long nursing career she owned and operated Rivergal Shuttle Service, LLC,

which was a shuttle service for fly fisherman on the Madison River. Bonnie was also a member of the Western Ways Band in which she played upright and bass guitar.

Obviously Bonnie was a very hard-working, career-oriented person, but she also enjoyed many other things. She loved to go dancing to western music, gardening, animals (especially horses) and talking to her fisherman customers. She was a very strong, beautiful woman that beat the odds. She was a teacher to many and absolutely loved her family.

Bonnie was preceded in death by her parents and her first husband Harry Reno who passed away in 1977. She is survived by: brother William Lee Garrett; sons, Justin Joe Reno

and Kenrick Owen Workman; daughter, Crystal Bachmann; step-children, Shea Workman and Russell Workman; four grandchildren; two great-grandchildren; and close family friends Ray Allison, Kevin Hodges and Mary Noble.

Memorials may be made in Bonnie's name to Warriors and Quiet Waters Foundation at P.O. Box 1165, Bozeman, MT 59771-1165.

A memorial service will be held at 2 p.m. on Saturday, Jan. 26 at Dahl Funeral Chapel.

Interment with her late husband will take place at a later date at the Willow Grove Cemetery in Buffalo, Wyo.

Condolences and memories may be shared with the family at www.dahlcares.com.

COMICS & PUZZLES

Brought to you by

**www.pitstop
pizza
andgrill.com**

FOLLOW US ON FOR
DAILY AND WEEKLY SPECIALS!

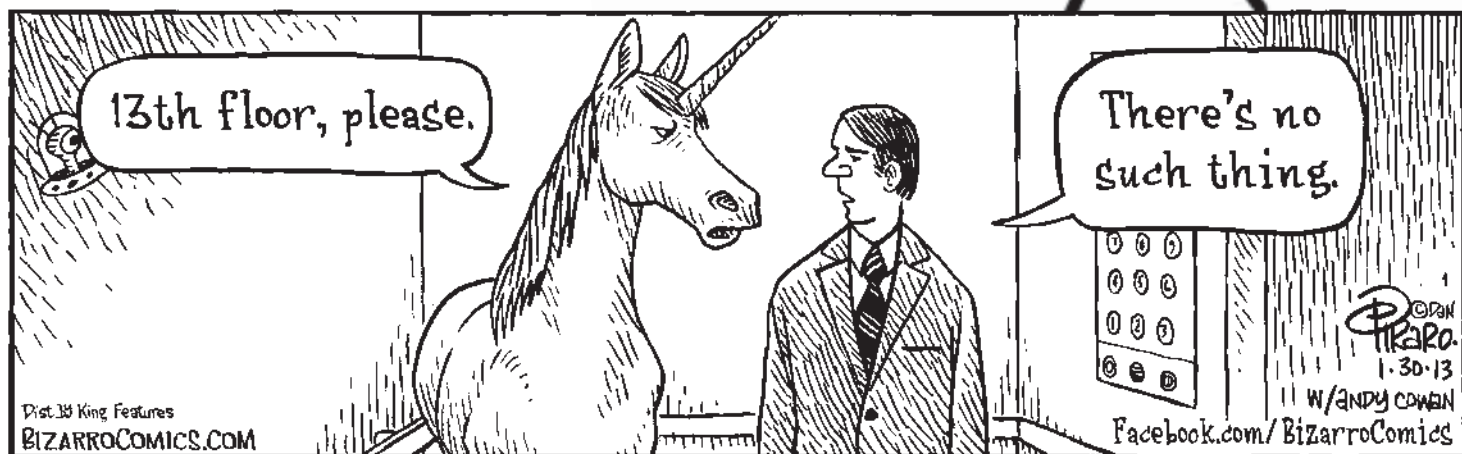
HOURS: MON - SAT 11 AM - 8 PM.

**SOUP'S ON AND
PANINIS ARE BACK!**

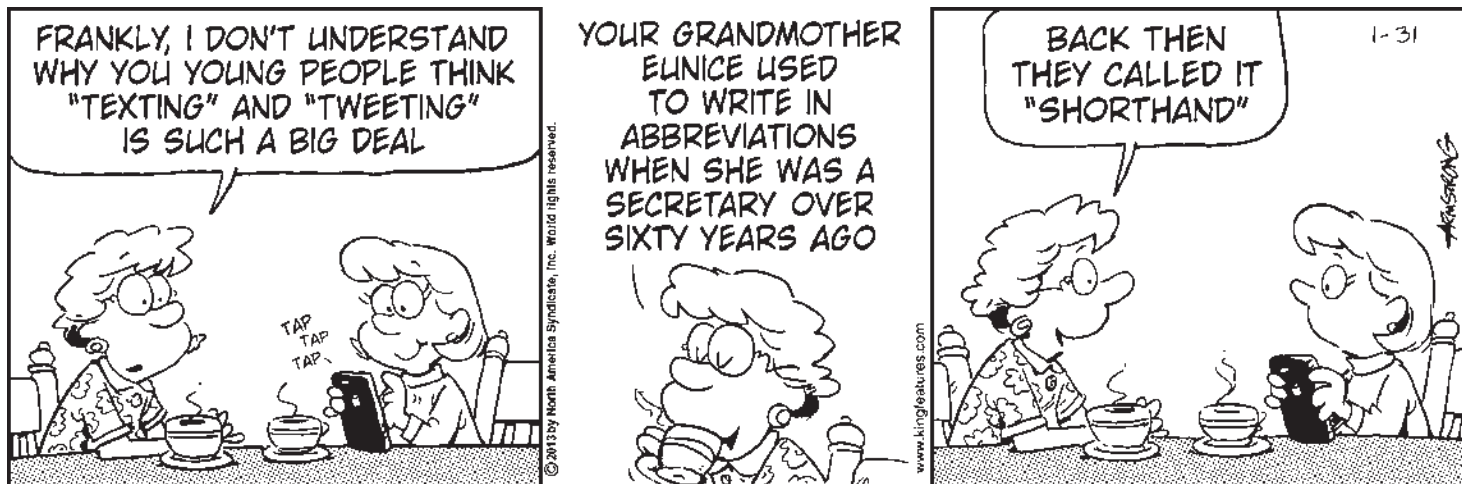
**PIZZA
BURGERS ■ BBQ
SANDWICHES**

682-4979 ■ ENNIS

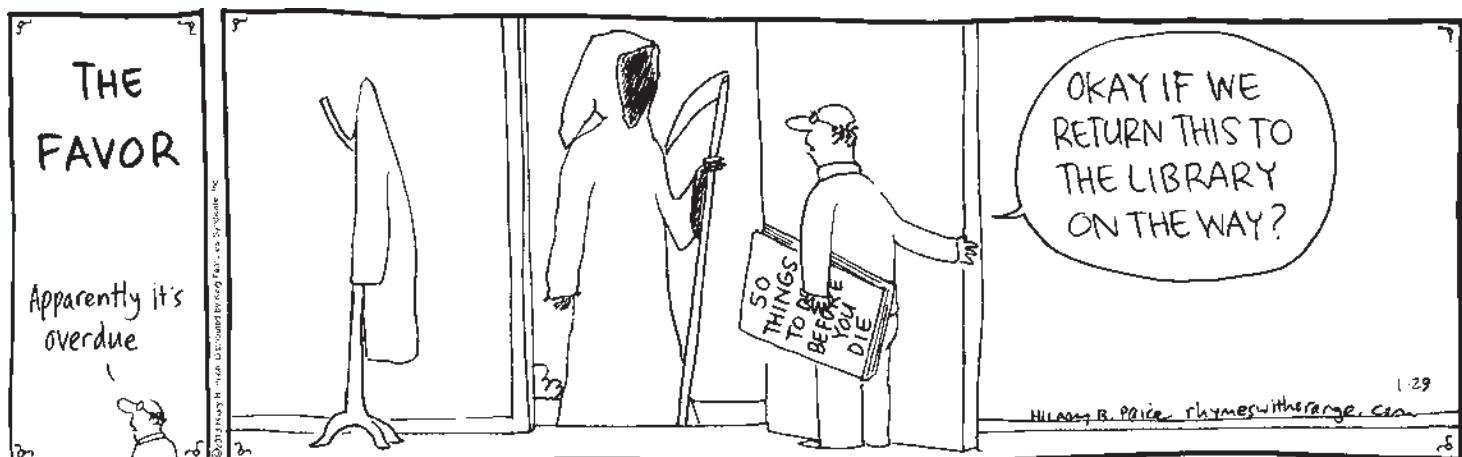
BIZARRO



MARVIN



RHYMES



CRYPTOQUIP

R K P J O U N P E K Z J D Z O J ' E N S Q P
R Z Q P P J U B D K , Z D B P O O Z E
R Z A A W P O B I I P T Z J D I T U N
O K U T E J P O O U I W T P S Q E K .

Today's Cryptoquip Clue: Z = I

dear maddy

By The Madisonian
Do you have a question you'd like to submit?
Email dearmaddy@madisoniannews.com

Dear Maddy,

I recently overheard some people in town talking about some good friends of mine. They were saying that they were separating and heading toward divorce. I have not heard anything about this from my friends. I didn't even know they were having issues! Is it ok to approach my friends about this or should I keep my nose out of it?

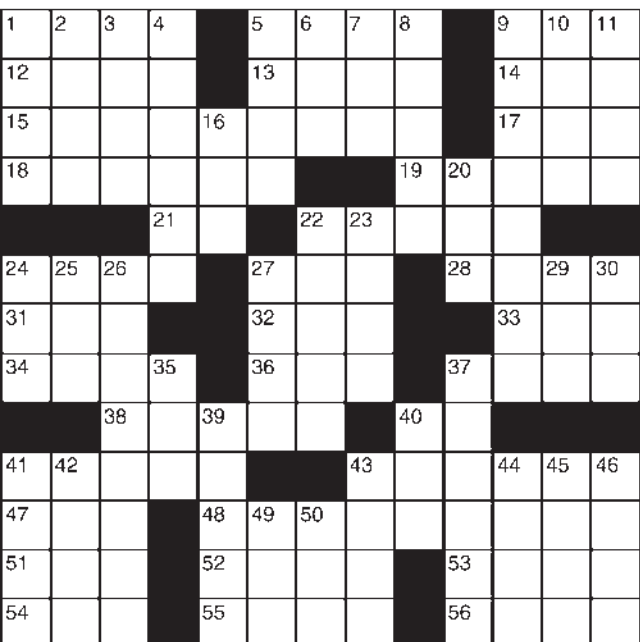
Dumbfounded in Dillon

Dear Dumbfounded,

Before you go ahead believing everything you hear, is it possible that what you heard was an ugly rumor? People sometimes take it upon themselves to "inform" others of what they think is going on in someone else's life. This information is often not accurate and can go on to hurt people, relationships and reputations. I would stand to say that if your good friends have not mentioned anything to you then either it's not true or they are not ready to share any decisions they have made. Living in the small area we do, news travels fast whether good or bad. If you are truly concerned about your friends then give them a call and ask how things are. Wait for them to mention something before spouting off what you've heard or insisting it must be true. The thing about rumors is that they are just that: a rumor. If it isn't true then it won't hold weight and people will realize, probably when they see your friends going strong around town, that it was actually untruthful gossip

for entertainment purposes only

CROSSWORD *By Eugene Sheffer*



- ACROSS**
- 1 Throat clearer
 - 5 Pinball boo-boo
 - 9 Moment
 - 12 Transcending (Pref.)
 - 13 Distant
 - 14 Weep
 - 15 Key with a left-pointing arrow
 - 17 Khan title
 - 18 Them
 - 19 Chef's garb
 - 21 Smallest st.
 - 22 Decorator's theme
 - 24 Bankrolls
 - 27 Party bowlful
 - 28 Donated
 - 31 Mess up
 - 32 Illustrations
 - 33 Spy novel org.
 - 34 Boyfriend
 - 36 Part of TGIF
 - 37 Bartlett or Bosc
 - 38 Grind the teeth
 - 40 "Hello"
 - 41 Soda shop item
 - 43 Buck
 - 47 401(k) alternative
 - 48 Hearth
 - 51 "What's up, —?"
 - 52 Coffee shop array
 - 53 The "I" in "The King and I"
 - 54 Storm center
 - 55 Plumbing problem
 - 56 Clarinet insert
- DOWN**
- 1 Early pulpit
 - 2 Warmth
 - 3 Leave a good impression?
 - 4 Creators
 - 5 Reveille's opposite
 - 6 "— picture paints a thousand words, ..."
 - 7 Fond du —, Wis.
 - 8 Halloween candy
 - 9 Capone's nickname
 - 10 Therefore
 - 11 Greenish-blue
 - 16 Lanka preceder
 - 20 Glutton
 - 22 Merriment
 - 23 Makes up one's mind
 - 24 Charlotte's creation
 - 25 Exist
 - 26 Hot-rodgers' contest
 - 27 Raised platform
 - 29 By way of
 - 30 Listener
 - 35 Italian article
 - 37 Column
 - 39 Horrible
 - 40 Bound
 - 41 Faction
 - 42 Helen's place
 - 43 Dilbert's place
 - 44 Diane or Nathan
 - 45 Dermatology subject
 - 46 Peruse
 - 49 Rage
 - 50 Geneticist's letters

All puzzle answers on Classifieds Page

406-682-7406

FOOD BANK DONATIONS EVERY THURSDAY SAVE MONEY!
*SEE BELOW FOR LIST OF NEEDS

REMINER: USE THOSE FUN & FOOD CARDS!

LEAGUE ACTIVITY

SENIORS: MON - 10AM-NOON
WOMEN: MON - 7PM -9PM
MEN'S: TUES - 7PM-9PM
MIXED: WEDS - 6:30PM-10:30PM

ENNIS FISH BOWL

WHERE FUN & FOOD COMBINE!

--- FEBRUARY CALENDAR ---

SUNDAY, FEB 3RD - SUPER BOWL PARTY
ALL TV'S ON THE GAME, SPECIAL PARTY FOOD!
MONTE CARLO BOWLING - PRIZES & A LOT OF FUN & FOOD.

THURSDAY, FEB 7TH, 14TH, 21ST, 28TH - FAMILY NIGHTS!
BURGER & BOWL SPECIAL, COMMUNITY FOOD BANK DONATION - SAVE MONEY!

THURSDAY, FEB 14TH - VALENTINE'S DAY NIGHT
2 FOR 1 BOWLING, SPECIAL MEAL OFFERING

THURSDAY, FEB 21ST - WINE CLUB
LIMITED SEATING, CALL FOR RESERVATION: 682-5695

SATURDAY, FEB 22ND - MONTE CARLO BOWLING NIGHT
*FOOD BANK NEEDS: MAC & CHEESE, CEREAL, PEANUT BUTTER, RAMEN NOODLES, BROWNIE & CAKE MIXES, HAMBURGER HELPER, ETC.

406-682-5695

SUPER BOWL SPECIALS!

BACK ALLEY BBQ -- SHREDDED BEEF SANDWICHES, BBQ CHICKEN DRUM STICKS & MORE!!

SERVING IN THE BOWLING ALLEY
M - F 3 P.M. - CLOSE
SAT. & SUN. NOON - CLOSE
DINING ROOM OPENS AT 4 PM EVERY DAY FOR DINNER!

FIND US ON

OPEN 7 DAYS A WEEK! #59 MT HWY 287 ENNIS, MT "JUST AROUND THE CURVE"

ENNIS FLORAL

Valentine's Day!
NOW TAKING ORDERS.

Create your own bouquet for your budget!

ROSES
\$60/dozen or \$30/half dozen
in a vase

CANDY | FLOWERS | COOKIES
STUFFED ANIMALS WITH BIG OR SMALL BALLOONS

COOKIES BY PIC-A-NIC BASKET
(Delicious chocolate chip, peanut butter chocolate chip cookies...yum!)

\$6/dozen or \$3/half dozen
Small charge for delivery.

202 FIRST ST. | 682-5532

Libraries Showing Documentary Film

From Lucy Ennis

ETHOS explains who influences our government and how it happens. This is the third in a series of films that are being shown as informational input for the general public. There is no admission fee for the films. All are welcome to view the film and join in discussion afterward.

Ethos: a Time for Change will be shown at both Madison Valley Public Library and Sheridan Public Library. Monday, Feb. 4 at 6 p.m. will be the first showing with the repeat on Tuesday, Feb. 5 at 5:50 p.m. in Sheridan.



Big Brothers Big Sisters-Ennis Branch welcomes new director

From Susanne Hill
BIG BROTHERS BIG SISTERS-ENNIS
BRANCH COMMITTEE

Cori Koenig is the new Director of the Ennis Branch of Big Brothers Big Sisters. Cori is excited about her new role and she looks forward to being a part of the Big Brothers Big Sisters program in Ennis for years to come. Cori is a Montana native. Growing up on ranches and in caring, rural communities has

instilled a deep love of the outdoor Montana lifestyle and for giving back to the community. She is lucky to be married to her high school sweetheart and has the joy of raising their two young children in Ennis, Montana.

Cori graduated from MSU-Bozeman with degrees in Marketing and Photography. She has worked in both the art and business world and is excited to mix the two as the Director of the Ennis Branch of Big Brothers Big Sisters. Cori has helped out with the Ennis Arts Association Arts Festival and the Fly Fishing Festival Gala Banquet. She has coached Mustang Cross Country the past several years and she is currently also co-director of Ennis Continuing Education.

"I am looking forward to continuing the strong tradition that BBBS has built of positively impacting kids from early grade school through high school," Cori says. "It is wonderful to see the shining eyes of a 'Little Brother' or 'Little Sister' when they speak of their 'Big' or the warm smiles that the mention of a 'Little' invokes."

The Ennis Sidekick Program was established in 1998. It is a partnership between the Ennis Branch of Big Brothers Big Sisters and the Ennis Schools. Last year, over 30 high school sophomores, juniors and seniors were matched with children in grades K-4 on a one-to-one basis. The purpose of the program is to form a friendship between the volunteer (Big) and the child (Little) to assist the Little with social skills, academics and self-esteem.

To learn more about the Ennis Branch of Big Brothers Big Sisters or to find out how you can get involved, contact Cori Koenig at bbbs@3rivers.net or 682-5681

Just a reminder...

Please join us
in wishing Dr. Gooze happy retirement
and greet Dr. Kelli Christensen on Sunday,
FEBRUARY 3RD at
BETHANY HALL in Sheridan from 2-5 PM.

Joe Smithson

CARPET STEAM CLEANING
UPHOLSTERY CLEANING
SMOKE & WATER RESTORATION

682-7354
Serving the Ennis Area

43+ ACRES
ONLY \$279,000!
On Beaverhead River with elevated building site, productive irrigated, adjacent to BLM!

62+ ACRES
Between Ruby Reservoir & Alder. Productive, irrigated, numerous homesites.
Now Only \$399,000.
Call Katie 596-4000

Katie Ward & ASSOCIATES P.C.
REAL ESTATE BROKERAGE

406-596-4000
Sheridan, MT Office
PropertyInMontana.com

The Sportsman's Lodge

Lunch Specials
for the week of January 30 - February 6

Thursday - Shredded Beef Chimichangas
Friday - Fish Tacos
Saturday - Hot Pork Sandwich
Sunday - Lasagna
Monday - Chicken Parmesan Sandwich
Tuesday - Pork Verde Enchiladas
Wednesday - Pot Roast

Fresh Homemade Soups Made Daily

- Additional Dinner Menu Items
- Cedar Plank Salmon
- Chicken Parmesan
- Lobster Ravioli
- Filet Oscar

310 Mt Highway 287 | Ennis, Montana 59729 | 1-406-682-4242

MADISON
Laundry and Cleaning 682-4933

TUESDAY: DILLON: The Mini (by 8:30 a.m.)
ALDER: Alder Market
SHERIDAN: Serendipity's
TWIN BRIDGES: Mad Hatters

WEDNESDAY: WHITEHALL: Tri-County IGA

THURSDAY: VIRGINIA CITY: Rank's Drug

John's Words of Wisdom: Some cause happiness wherever they go; some whenever they go.

Our Specialized Services include cleaning of clothes, blankets, comforters, pillows & area rugs

DOWNTOWN SHERIDAN
3200 SQ. FT. BRICK COMMERCIAL BUILDING WITH FULL BSMT.
ONLY \$287,900!
CALL KATIE 596-4000

CHICKS BAR, RESTAURANT, MOTEL & RV PARK
OWNERS RETIRING
Turn Key high volume profitable business!
Well Established. Excellent financials.
Now Only \$685,900.
Call Katie 596-4000

Katie Ward & ASSOCIATES P.C.
REAL ESTATE BROKERAGE

406-596-4000
Sheridan, MT Office
PropertyInMontana.com

more than two-thirds of the population is reading **our** newspaper.
www.madisoniannews.com

Ice Fishing Tournament

February 1-3, 2013
West Yellowstone • Montana

NAIFC Ice Fishing Tournament
West Yellowstone | Montana

NAIFC Weekend Schedule

- Friday night (Feb 1st): Free Ice Fishing Seminars & Rocky Mountain Ice Fishing Product Fair
- Saturday (Feb 2nd): Product Demo's & On-Ice Practice, evening Rules Meeting
- Sunday (Feb 3rd): AM Tournament (2-person team) Weigh-in with cash & prizes (up to \$20,000 payout)

SATURDAY Feb 2nd Kids Ice Camp

- 10:00 AM - 12:00 Noon (Kids lunch included)
- In-class tutorial followed by on-ice fishing
- Free ice fishing rod & tackle for all kids
- Parents must accompany children
- Dress for the outdoors
- Kirkwood Resort & Marina Boathouse*

*More info and directions
Lodging and West Yellowstone info at www.yellowstonedestination.com
www.WestYellowstoneIceFishing.com 406.646.7200

West Yellowstone MONTANA TBID
West Yellowstone Businesses support NAIFC

Workshop Scholarships available for Ennis and Harrison area residents of all ages

From Vern Thibodeaux
EAA SCHOLARSHIP CHAIRMAN

The Ennis Arts Association (EAA) has Workshop Scholarship funds available to Ennis and Harrison area residents. These scholarships are available at any time during the year to youth and adults on a first come, first serve basis. The funds are available for any art related workshop, class, seminar, and educational festivals and camps. Scholarship detail

and applications can be found online at www.ennisartsassociation.org.

Art related subjects can include the visual arts such as painting, sculpture, printmaking, photography and other visual media as well as architecture. It can also include the performing arts such as music, theater, film, and dance as well as literature and interactive media.

The Ennis Arts Association's (EAA) mission is to

promote the local arts and to support local aspiring artists. EAA annually offers Workshop Scholarships to any age student ranging from first graders to adults as well as art related Tuition Scholarships to high school graduates.

For more information about Workshop Scholarships or joining the EAA, please visit our website at www.ennisartsassociation.org or email info@ennisartsassociation.org.

Mural honoring Montana women

From Lynda Moss

The first new painting installed in the Montana State Capitol since 1928 will be a mural honoring the history of Montana women as community builders and commemorating the 100th anniversary of women's suffrage in Montana in 2014, according to former legislators Lynda Moss and Diane Sands.

A process was established by the 2011 legislature to commission the mural to be funded solely by private contributions. The total cost is expected to be \$56,000. To date, political parties and several organizations have contributed over \$17,000. The Montana History Foundation and the Montana Historical Society are serving as fiscal sponsors for the mural. A grant from Humanities Montana will

ensure historic accuracy.

Women across the state have pioneered the social institutions now considered the essentials of the fabric of community life by founding libraries, museums, theaters, parks, schools, hospitals, shelters, labor unions and social clubs. The painting will honor women's diverse roles in family life and as business leaders, educators, healthcare providers, scientists, ranchers and "community builders".

The historic Montana State Capitol is known for a wide variety of artwork, including paintings by Charlie Russell and Edgar S. Paxson as well as life-size bronze sculptures of Senator Mike Mansfield, Maureen Mansfield and Jeannette Rankin.

Fifty-five mural painters from throughout the nation sub-

mitted applications to be considered for the mural commission. Three semi-finalists were selected to submit proposals: Hadley Ferguson of Missoula, Robert Evans of Sherborn, Mass., and Janet McKenzie of Island Pond, Vt.

Montanans and community groups are invited to submit stories of remarkable women and women's organizations to help document the significant contributions of women in the state's history and add to the research for the mural.

Information about the mural, the process to submit stories about Montana women and women's organizations and information about online donations for the mural may be found on the Montana Women's Mural website montanawomensmural.org.

TASTE TESTING



Dylan tries a blueberry and Marisa waits for his reaction. The other children fill their bowls with some new choices and some old favorites as we talk about nutrition at ECCS.

by Regan Goettle



Please join us at
MADISON VALLEY PUBLIC LIBRARY
210 E. Main Street, Ennis

for our 2nd annual ADULT READING PROGRAM

Feb. 1 to March 20

Read books, audio books, e-books or e-audio books checked out from the library. For each one you read, you may enter our prize drawing. The grand prize is a Kindle Fire! There will be many other fun prizes.

The more you read, the better your chances!

There will be a party and prize drawing March 20 (The first day of Spring) at 2:00 p.m.

Join us for a

"Technology Petting Zoo"

Thursday Feb. 7 from 2-4 p.m

Try out a Kindle Fire, Nook tablet, and iPad

Get Results.
advertise in The Madisonian
406-682-7755

VEHICLES FOR SALE

Cheapest Fords, Dodge Ram Pickups, Chryslers, & Jeeps. Trades Accepted

1-877-GOT-WOLF
1-877-468-9653

Thank You!

"THANK YOU RUBY VALLEY FFA ALUMNI AUCTION SUPPORTERS"

Donated by	Donation	Buyer	Donated by	Donation	Buyer
1. D&D Auto	Air Tank	BJ & Lisa Morgan	64. Western States Insurance	Gift Basket	Dr. Tom & Laurie Bartoletti
2. Moody Implement	Jumper Cables	BJ Morgan	65. West Feeds	3 Mintrate Blocks	Dr. Tom & Laurie Bartoletti
3. Brad Guinnane	Banana Cream Pies	BJ Morgan & Brant Marsh	66. West Feeds	Horse Feed	Dr. Tom & Laurie Bartoletti
4. Lisa Mehlhoff	Canned Goods	Bob Marsh, Carol Bruggom & Dale Se	67. Randy & Sandy Marr	Wood Rack	Dr. Tom & Laurie Bartoletti
5. Jenny Wood	Canned Goods	Bob Marsh	68. Seth Green	Horseshoe Kit	Dr. Tom & Laurie Bartoletti
6. Accelerated Genetics	Hat & 10 units Semen	Boyd Angus Ranch	69. JDL	1 ton of Gravel	Dr. Tom & Laurie Bartoletti
7. Rob & Dena Miller	15 sq. Sqaures of Hay	Boyd Angus Ranch	70. Sue Hall	Mary-Kay Gift Set	Dr. Tom & Laurie Bartoletti
8. Genex	10 units of Semen	Boyd Angus Ranch	71. Ruby Valley FFA	Wire Roller	Dr. Tom & Laurie Bartoletti
9. Pacific Steel	\$20 off Certificate	Boyd Morgan	72. Baldy Mountain	4 hrs. Rental	Dr. Tom & Laurie Bartoletti
10. Radio Shack-Ennis	3 Music CDs	Boyd Morgan	73. Wells Fargo Bank	Gift Bag	Lynn Rowberry
11. Lisa Mehlhoff	Canned Goods	Boyd Morgan	74. Upper Canyon Outfitters	Sweatshirt	Lynn Rowberry
12. Clark Honey	2 Honeys	Boyd Morgan & Cal Ward	75. Michelle VanDyke	Cowboy Towels	Lynn Rowberry
13. Ruby Valley FFA	Chair	Boyd Morgan	76. Blacktail Gallery	Horse Print	Lynn Rowberry
14. 3 Rivers	Kindle	Brand Morgan	77. Gravel Bar	\$25 Gift Card	Randy & Sandy Marr
15. Ray Shaw	E-2 Herbicide (\$132)	Bruce & Julie Peterson	78. Boyd Angus Ranch	Beef	Travis & Jeanie Derby
16. Blacktail Gallery	God Bless Our Home	Bruce Peterson	79. Allhands Construction	1 load of Gravel	Marsh Ranch
17. Western Ranch Supply	Syringe Gun	Cal & Julie Ward	80. Ruby Valley Pressure Treat	\$50 Gift Card	Marsh Ranch
18. Trails End	\$25 Gift Card	Larry & Carol Bruggom	81. Clark Honey	2 Honeys	Mick Deveraux & Ken Shields
19. Graham Drilling	\$50 to Andy's Garage	Carol Bruggom	82. Frontline Ag	JohnDeere - Toy	Mike Stender
20. Graham Drilling	Allhands Auto	Carol Bruggom	83. Jake & Donna McDonald	Montana Silver Necklace	Mike Stender
21. Dr. Chris Marolo	1 Treatment	Chuck Boswey	84. Colter Guinnane	Gate Latch	Mike Stender
22. Boyd Angus Ranch	Turkey	Dale Smail	85. Hernon Cervantes	12" Steel Panel	Morris Land
23. L & S Concrete	1 load of Gravel	DASH Construction	86. Austin Huttinga	55 gal. Drum Lifter	Morris Land
24. KH Concrete	3 yards concrete	DASH Construction	87. Mountain View Vet Clinic/Vac.	Gun & Bag	Morris Land
25. CPS-Jim Gordon	E-2 Herbicide	Del & Robin Bieroth	88. Ruby Valley FFA	Calf Shed	Morris Land
26. Mike Stender	1 Round Bale	Del & Robin Bieroth	89. Ruby Valley FFA	Coat Hanger	Parr Family
27. Dick & Jody Lueck	1 Grass Bale	Del & Robin Bieroth	90. Lisa Guinnane	Fleece Coat	Parr Family
28. Donna Trischman	Tree Skirt Quilt	Barb Elser	91. Dr. Kepp	Eye Care Bag/Cooler	Robin Bieroth
29. Smail Construction	1 load of Gravel	Don Elser	92. Swenson Family	Beaver Lodge Print	Robin Bieroth
30. Smart Family	Snow Shoes	Don Elser	93. Ruby Vally Pressure Treat	\$50 Gift Card	Ruby Dell Ranch
31. Larisa Mehlhoff	Scarf	Don Elser	94. Steve Saunders	1.25 lbs Chapperal	Ruby Dell Ranch
32. Del Beroth	Hand-made Reins	Don Elser	95. Marsh Family	1 Round Bale	Ruby Dell Ranch
33. Montana Mad Hatters	Gift Card	Don Elser	96. Ron Nye	Alfalfa Pellets-1 ton	Ruby Dell Ranch
32. JGA-Sheridan	Scare Crow	Don Elser	97. Lisa Mehlhoff	Canned Goods	Ruby Dell Ranch
33. Horse Fly	Headstall	Don Elser	98. In-Back	2 Dinners	Ruby River Ranch
34. Frontline Ag	Toy Auger	Dorothy Peterson	99. Bozeman Farm Credit	Date Book & Print	Ruby River Ranch
35. Andy's Service	Windshield Repair	Dorothy Peterson	100. Ruby Valley Nat. Bank	Miter Saw	Ruby River Ranch
36. IMOC Lumber	Gift Card	Dorothy Peterson	101. Ruby Valley FFA	Shop Lamp	Ruby River Ranch
37. Lisa Mehlhoff	Canned Goods	Dorothy Peterson & Ken Shields	102. Ranch Resources	Maps	Ruby River Ranch
38. Intermountain Irrigation	Sprinkler Heads	Ed Guinnane	103. Rocky Mountain Supply	\$25 Gift Card	Ruby Valley Nat. Bank
39. Colter Guinnane	Steel Post Puller	Ed Guinnane	104. Swenson Family	Fox Print	Ruby Valley Nat. Bank
40. Ruby Valley FFA	Gate Latch	Ed Guinnane	105. Brad Guinnane	Banana Cream Pie	Ruby Valley Nat. Bank
41. Rodney Braaten	25 sq. Sqaures	Ed Guinnane	106. Sheridan Auto	Battery Charger	Smail Construction
42. General Distributing	Helmet & misc.	George Boyd	107. Pacific Steel	Gift Card	Smart Family
43. Colter Guinnane	Post Hole Pounder	George Boyd	108. Lakeland Feeds	20% Off 200# block	Steve Wood
44. Ruby Valley FFA	Steel Post Puller	Henry Family	109. Ruby Springs Lodge	Skeet Shoot for 4	Steve Wood
45. Stockman Bank-Dillon	XL Carhart Coat ect..	Henry Family	110. Shepherd's Garage	Net Wrap	Steve Wood
46. Belgrade New Holland	Bobcat Toy	Henry Family	111. Cheryl Mulholland	Massage	Steve Wood
47. Lisa Guinnane	Walt Perkins Book	Henry Family	112. Graham Drilling	Bo's Gift Card	Travis Derby
48. No. 1 Ladies Quilt Shop	Table Runner Kit	Henry Family	113. Nutralyx	Coat and Hat	Will Fabel
49. Murdoch's - Dillon	Saddle Pad	Horse Creek Ranch	114. Ruby Valley FFA	Shop Lamp	Will Fabel
50. Hottie Bo Bottie	Full Set of Nails	Jenny Wood			
51. R.E. Miller	Load of Gravel	Jim Paull	Andrew Hagen	Cash Donation	
52. Kamp Implement	Toy Tractor	Julie Peterson	Wayne Lower	\$100 Cash Donation	
53. Farm Credit	Gift Basket	Ken Shields	First Madison Valley Bank	\$200 Cash Donation	
54. Cathy Rash	2 Hair Spray	Ken Shields	Snowcrest Ranch	\$250 Cash Donation	
55. Jenny Wood	Canned Goods	Ken Shields	Frank Colwell	\$100 Cash Donation	
56. Pivots Plus	Lawn Sprinkler-Tower	Kim Guinnane			
57. Blacktail Gallery	Cowgirl Print	Kim Guinnane	Loren Tucker	Auctioneer	
58. Larisa Mehlhoff	2 Scarves	Kim Guinnane			
59. Bill & LaRae Stender	Whirli Gig	Kristen Swenson			
60. Rocky Mountain Supply	\$25 Gift Card	LaRae Stender			
61. Clark Honey	Honey Beas	LaRae Stender			
62. Dave & Stephanie Haag	2 Pumpkin Pies	Lisa Guinnane			
63. Chicks	\$50 Gift Card	Lisa Morgan			



Ennis Arts Association to meet

By ENNIS ARTS ASSOCIATION

The Ennis Arts Association

will meet at 10 a.m. on Tuesday, Feb. 12 at the Madison Valley Public Library in Ennis. Pro-

gram: Kathy Carpenter and Beverly Claassen will present a video, "Larry Zabel Retrospect". There

will be no potluck luncheon. For more information, call Kathy at 682-4985 or 579-4545.

POSTER CONTEST WINNER



Photo submitted by Gail Banks

The Twin Bridges School has announced the winner of their poster contest and Senior Mackay Hirst was awarded an iPod Touch for his winning design. The Twin Bridges Montana Behavior Initiative (MBI) Committee suggested the contest. One of the first steps in the MBI process is to establish a set of universals that the entire school can relate to—what it means to be a Twin Bridges Falcon. It was also suggested that the students develop the universals and create the Falcons design that would be part of the acronym, PRIDE. After much consideration of 18 entries submitted by 15 students, Mackay Hirst's project was selected. A big thank you goes out to Ruby Valley National Bank in Twin Bridges for their sponsorship of the program.

The Sportsman's Lodge
RESTAURANT · CASINO · LOUNGE · LODGE

SUPER BOWL PARTY

Come down early... Party starts at 2 pm

DOOR PRIZES!
DRINK SPECIALS! • FREE FOOD!

310 N MAIN | ENNIS

TRENZ

SALON & DAY SPA

has Moved!

59 hwy 287, Ennis | 682-3400

exceeding expectations SINCE 1978

JDL CONSTRUCTION CO.
SHERIDAN, MT · 406-842-5112
WWW.JDLCONSTRUCTION.COM

Stratford Homes
system-built homes

MADISON THEATRE 682-4023
115 Main St., Ennis, MT

"Flight"
Rated: R
February 1st and 2nd

COMING SOON:
"Lincoln", "Silver Linings Playbook",
"Les Miserables", "Hitchcock"

Adults \$6.00 • Children (12 & under) \$4.00
Box Office Opens 6:15 p.m. • Show Time 7:00 p.m.

4 PAW PALS RESCUE PET OF THE WEEK



ENID

Hi, if I seem surprised, I am. Darn, was adopted and then had to come back when my mom had to find a new place to live. Came back with my brother Ed. I'm a loving sweet lady. Social with other cats, playful and willing to be your good girl. I'm spayed, fully vaccinated, been tested and found negative for FIV and leukemia. What I'm trying to say is I'm ready and raring to go, wait, I mean I'm ready to be adopted. Just call them and tell them you'd like to see Enid, (that's me). You can call Misty at 439-1405 or Arton at 287-3613. You can see the others at www.PetFinder.com or www.montanapets.org. Thanks a million for calling for me. I'll love you forever. Enid

SPONSORED BY:

Mountain View Veterinary

(406)684-5831

2 Metully Lane | Twin Bridges, MT

Sherwood Swanson Drywall Inc.

Hanging Custom Textures Finishing Painting

Office: (406)682-5438 Cell: (406)599-3524

B.P.O.E ORO-Y-PLATA LODGE #390
P.O. BOX 147 • VIRGINIA CITY, MT. • 406.843.5464

Elk's Valentine's Dance

with the **Dave Walker Band**

saturday, february 16th
8pm - midnight
everyone welcome
\$10 cover charge

STUDENT OF THE WEEK
SHERIDAN SCHOOL
Kialar Maddison

Kialar Maddison is an outstanding first grader at Sheridan Elementary School. She is an excellent reader and enjoys doing her academic work. Kialar is eager to learn and a joy to have in the classroom. She is an active Girl Scout and a friend to everyone.

MADISON COUNTY WEATHER

Thursday
Mostly cloudy with a 50 percent chance of snow. Highs 25 to 30. Lows 15 to 20.

Friday
Mostly cloudy with a 50 percent chance of snow showers. Highs 25 to 35.

Saturday
Mostly cloudy. Highs 25 to 35.

Sunday
Partly cloudy. Lows 10 to 20. Highs 30 to 40.

Monday
Mostly cloudy with a 20 percent chance of snow showers. Lows 10 to 20. Highs 30 to 40.

SNOW REPORT

1.29.13

DOWNHILL AREAS

Moonlight Basin
47-inch base, 7 in. / 17.78cm. in last 24 hours
www.moonlightbasin.com

Bridger Bowl
37-inch base, groomed and pack pow
www.bridgerbowl.com

Lost Trail Powder Mountain
72-inch base at summit
www.lostrail.com

X-COUNTRY AREAS

Rendezvous Trails
Trails groomed.
www.rendezvouskitrails.com

Chief Joseph Pass
All the classic trails were drag/compacted and tracks reset.
www.bitterrootxcskiclub.net

Homestake Lodge
Great powder skiing!
www.homestakelodge.com

Get Results.
s.hill@madisoniannews.com

Allstate
You're in good hands.

Auto | Home | Boats
Motorcycles | Life Insurance

586.3330
mariegary@allstate.com

Call or email for a quote.

SPONSORED BY:

In-Back Steakhouse
Now Open 7 Days a Week!

Deb & Randy would like to thank friends, family & the community for the warm welcome to Sheridan.

It has been Great!

Reservations 842-7632

Yellowstone CUSTOM COUNTRY HOMES

Building in Ennis and Southwest Montana since 1994

HOWARD MILLS, BUILDER
PO BOX 165 · ALDER, MT 59710 · 406-842.5068
WWW.BIGSKYBUILDERS.COM · YCCH@3RIVERS.NET

The Quality & Selection You Want. Home Décor · Flooring · Paint

The Delivery & Service You Need. Roofing · Siding · Fencing

KENYON NOBLE
LUMBER HARDWARE

7 Days a Week - Belgrade-406.388.6400 - Bozeman-406.586.2384 - www.kenyonnoble.com

1490 AM
KDBM
KBEV
98.3 FM

KBEV FM
93.3 98.3

We are in the Ruby Valley for you!

Listen to 93.3 or 98.3 for all your Weather, Sports, News, and Local events

Call us at 683-2800 or email us at joann@kdbm-kbev.com



GEARIN' UP FOR VIRGINIA CITY'S WINTERFEST



Photos by Ben Coulter

Clockwise from top left:

A local broomball team celebrates on the ice during last year's Winterfest Broomball Tournament in Virginia City.

Two broomball players go down on the ice at the City Park in Virginia City during the 2012 Winterfest Broomball Tournament.

A wild game of broomball takes place on the ice at the City Park in Virginia City during last year's Winterfest.

Bottom right:

Madison County residents young and old participate in the kids sledging races during last year's Winterfest in Virginia City.



Winterfest once again livens up a quiet Virginia City

Ben Coulter
THE MADISONIAN
ben@madisoniannews.com

Just when it seems like literally everyone is taking off to go on a tropical vacation somewhere, the residents of Virginia City and the surrounding communities of Madison County are coming together for Winterfest the weekend of Feb. 8-10. Winterfest is an annual event that presents a unique twist on the concept of friendly competition at a time when locals are in desperate need of a cure for cabin fever.

The Winterfest weekend revolves around the broomball tournament, a wild and wacky sport that combines aspects of soccer, lacrosse and hockey. Teams play each other on a traditional ice rink at the City Park in Virginia City, but instead of a hockey puck, they use a volleyball or soccer ball. Instead of using hockey sticks, players

pass and shoot the ball with broomsticks. The final twist in the broomball tournament may also be the biggest obstacle for teams to overcome. Instead of wearing ice skates, players must navigate their way around the rink in winter boots or shoes.

The tournament begins at 6 p.m. Friday, Feb. 8 and registration is \$40 per team. And if slipping and sliding on the ice doesn't sound like enough fun as it is, broomball fans and observers will soon realize the game is truly a spectator sport. The tournament continues all day Saturday, with a break in the afternoon for a 2-man Log Sawing Contest at 2 p.m. downtown. Activities will continue on Sunday morning with a children's sledging race, followed by the broomball championship game at 1 p.m.

A dog wheelbarrow race down Main Street will follow the championship game on Sunday and an awards ceremony will be

held at the Pioneer Bar. After each night's festivities, Dave Walker and Bobby Gutierrez at the Pioneer will perform live music.

Event organizer Joanne Erdall-Van De Riet describes the weekend as a combination of community togetherness and camaraderie, and a challenge for everyone to be the best in the spirit of friendly competition. She added that it's a good opportunity for people to come out and watch their kids play, and that Winterfest continues to gain recognition from neighboring communities as a successful event.

"Everyone gets to see people that you haven't seen over the winter, which is really cool," said Erdall-Van De Riet. "It's just a good reason to come to Virginia City."

For more information or to register your team for the broomball tournament, contact Candy at 600-9370.



SEVENTH GRADE BASKETBALL



Photos by Kate Schwend
Twin Bridges and White Sulphur Springs seventh grade teams played one another this past weekend. It was a close game with Twin Bridges coming out on top.

BASKETBALL ROUNDUP

JANUARY 24

BOYS

Ennis 76, Lima 29

Goodman	11 pts., 3 reb., 2
asst., 2 stl.	
Ott	2 pts., 3 asst., 1
stl.	
Croy	6 pts., 3 reb., 3
asst., 1 stl.	
McKittrick, B.	4 pts., 4 reb., 1
stl.	
McKittrick, W.	14 pts., 2 reb., 6
asst., 3 stl.	
Bullock	15 pts.
Sullivan	13 pts., 9 reb., 3 asst., 3
stl.	
Leo	7 pts.
Clark	4 pts., 7 reb., 2
asst., 2 stl., 1 blk.	

JANUARY 25

GIRLS

Harrison/Willow Creek 55, Lima 14

Sheridan 26, Shields Valley 66	
Lee	1 stl.
Degel	6 pts., 6 reb.
Lueck	9 pts., 2 reb., 2
blk., 3 stl.	
Evans	3 reb., 3 stl.
Shields, C.	3 pts., 2 reb.
Woirhaye	1 reb.
Shields, M.	1 reb.
Guinnane	3 reb.
Schwend	8 pts., 4 reb., 2
blk.	

BOYS

Harrison/Willow Creek 63, Lima 47

Twin Bridges 62, White Sulphur Springs 38

Sheridan 27, Shields Valley 69	
Burke	7 pts.
Marsh	2 pts.
Green	6 pts.
Tilstra	5 pts.
Kenworthy	3 pts.
Browne	4 pts.



JANUARY 26

GIRLS

Twin Bridges 61, West Yellowstone 20

Ennis 30, Manhattan Christian 44	
Sheridan 27, Gardiner 63	
Lee	6 pts., 1 stl.
Degel	7 pts., 2 reb.
Lueck	14 pts., 8 reb., 1 asst., 5 stl.
Evans	1 pt., 3 reb.
Shields	2 reb.
Woirhaye	2 pt., 1 reb.
Schwend	2 reb.

BOYS

Harrison/Willow Creek 46, White Sulphur Springs 54

Twin Bridges 77, West Yellowstone 29

Sheridan 41, Gardiner 57

Ennis 54, Manhattan Christian 57

Goodman	1 reb., 1 stl.
Ott	1 reb., 2 asst.
Farnes	4 pts., 5 reb., 2
asst., 2 stl.	
McKittrick, B.	10 pts., 7 reb., 1
asst., 3 blk.	
McKittrick, W.	1 reb., 1 asst., 1
stl.	
Bullock	21 pts., 4 reb., 4 asst., 4
stl.	
Sullivan	17 pts., 7 reb., 3 stl., 1 blk.
Clark	2 pts., 1 asst., 1
stl.	

Give your Valentine
The Ultimate
Spa Experience
AT MADISON SQUARE!

Starting with SCALP MASSAGE
WITH BLOW DRY OR HAIR CUT at 4-C SALON

and
HOUR & A HALF MASSAGING PEDICURE
at HAPPY FEET NAIL SALON

and
3 TANNING SESSIONS OR 1 WEEK OPEN GYM WITH
EUCALYPTUS STEAM ROOM
at MADISON SQUARE ATHLETIC CENTER

all for \$50!



Your special Valentine will LOVE YOU
for caring so much and for not breaking the bank!

So....
Stop by Madison Square Athletic Center today and
pick up your Gift Certificates now!

And don't forget...you can drop the kids off at the
Madison Square Drop In Babysitting!

ALL AT MADISON SQUARE!

COLUMNS

Sustainably Sadie

Sarah Miller,
FOR THE MADISONIAN

Safe Winter Driving

As we head towards Spring, we also are heading towards the time of year when we in Southwest Montana can see our most intense snow storms of the year. Warmer weather can make for slushy driving conditions. Wind and freezing temps make for icy, slippery roads.

Good friends of ours were recently in a one-car, no-fault accident resultant of icy roads. While the car was totaled, our four friends were able to walk away, unscathed. Their amazing

luck of no serious injuries didn't stop law enforcement from issuing a ticket for improper vehicle maintenance. They were issued an \$85 ticket because their tires were insufficient for winter driving. Plan to replace your tires as needed. Save for the expense, and save yourself from a possible fine or accident.

I also recommend keeping a shovel, sleeping bag, water and snacks as well as a bottle of washer fluid in your car. Slushy roads can limit visibility. Being able to wash away the dirty spray from semi-trucks can be incredibly helpful.

On bad roads it's never a good idea to follow any vehicle too closely; give your fellow travelers space so everyone can

make it to their destinations safely. This may also prevent cracked windshields as the roads are often covered in gravel these days.

Icy roads also make it more difficult to slow down for animals crossing the road. When one deer crosses the road, scan the burrow pit for his friends that may follow.

Drive safe! And share your tips at the new Sustainably Sadie Facebook page, Like the page and follow along for a more sustainable life. Feel free to share at the blog, www.sustainablysadie.blogspot.com or email sustainablysadie@hotmail.com. Thanks for reading!

Twin Bits

Ruby Valley community organizations are joining forces to look for solutions to the recent lack of volunteers. Please join the Twin Bridges Community Association this Friday, Feb. 1,

at 8:30 a.m. at The Old Hotel in Twin Bridges to discuss the planning of a Ruby Valley Philanthropy Rally. Contact Paula Kinoshita at 684-5959 or oldhotel@3rivers.net for more information. Your community needs your support.

As part of the Big Read project, there will be a Twin Bridges Book Club/ community discussion of Willa Cather's book, My Antonia, at the MT Room at TBS, Monday Feb. 11 at 7 p.m. Mrs. Kelly Downing's sophomore class is participating in the discussion and there will be pizza. Please contact Mary Beth Walsh at mwalsh@rubyvalleybank.com she can have a head count for pizza.

From TBS Calendar:

Wed., Jan. 30: Elementary Science Fair @ MP gym
Thurs., Jan. 31: JrHi BBB @ Three Forks Tourney; Elementary Science Fair Awards, MP Gym, 8:20 a.m.

Fri., Feb. 1: BB @ Manhattan Christian, GBGB, 4 p.m.

Sat., Feb. 2: JrHi BBB @ Three Forks Tourney; Wrestling Divisional Tourney @ Dillon; BB w/ Ennis @ Home, GBGB, 2:30 p.m.; FFA Alumni Silent Dessert Auction, Gym Lobby, 3 p.m.; Little Dribblers (boys) play at half-time of varsity games

Mon., Feb. 4: BB w/ Butte HS "C" squads @ Home, G-5pm/ B- 7p.m.; JrHi BBB @ Sheridan, 4 p.m.; Honors Band & Choir @ Ennis;

Tues., Feb. 5: BB @ Lima, 4:30 p.m.; JrHi BBB w/ Whitehall @ Home, 4:30 p.m.

Wed., Feb. 6: Elementary Spelling Bee @ MT Room, 1 p.m.; Booster Club Mtg @ MT Room, 6 p.m.

Thurs., Feb. 7: Elementary Dental Screening; JV BB @ Dillon, BG, 6 p.m.

Fri.,

Feb. 8: State Wrestling @ Billings; BB w/ Lima @ Home, BG, 5:30 p.m., Senior Night!

Sat., Feb. 9: State Wrestling @ Billings; JrHi BBB 2 West Yellowstone tourney; BB @ Sheridan, 4 p.m., BBG

Mon., Feb. 11: JrHi BBB @ Cardwell, 4 p.m.

Feb., 13-15: District Basketball tournaments, Boys & Girls @ Butte MAC

Mon., Feb. 18: No School, President's Day

Feb. 20- 23: Divisional Basketball tournaments, Boys & Girls @ Hamilton

I am here to promote activities and events in the Ruby Valley. Please contact me at the above address, 684-5222 or P.O. Box 491, Twin Bridges 59754.



HOLLOWTOP SMOKE SIGNALS

By Art Kehler
FOR THE MADISONIAN

Untraditional Fare

Innovative cuisine for uncommon times

By nature, I am an optimistic person, not easily given to pessimism. However, the Mayan calendar fiasco, the

barely averted fiscal cliff and the recent, worldwide rash of natural disasters, have caused me to reassess my outlook. Though not certain, it is not a stretch to imagine the tri-cities (Harrison, Pony, Norris) area enduring uncommon times in the future. During such trying periods, everyday life can significantly change. One of the most unsettling effects could be markedly higher prices for traditional foods. So, just in case, I have begun to consider possible alternative victuals.

In similar days of yore, local folks supplemented their diets (sometimes secretively) with deer, elk, moose and other big game animals. However, at

my age, dragging such critters would be taxing to say the least. My only realistic chance to bag a deer would be to rigor its mortise, by "accidentally" running over it with my vehicle--repeatedly. Alas, game wardens frown on such unorthodox hunting techniques.

Consequently, because most can be harvested year-round, I am focusing on smaller, non-game beasts. Following is my initial list of potential healthy, wholesome, nourishing meals along with descriptive terms to whet the appetite:

- Gopher Gruel - so good, you'll whistle while you eat.
- Magpie Meat Pie - criminally delicious.

- Braised Badger Lips over Rice Pilaf - "Caution"-lips best obtained from deceased animals!
- Sage-Smoked Snowshoe-Hare Ears - low fat, heart-healthy.
- Raccoon Rump Roast with Loon Liver Gravy - the whole family will go loony over it.
- Rockin' Rock Chuck Chili - perfect for the heartburn-deprived.
- Grilled Muskrat Tenderloins with Sautéed Mushrooms - fresh from trap to plate.
- Porcupine Porridge - sticks to the ribs.
- Teriyaki Coyote Kabobs - you'll howl for more.
- Sculpin' Surprise - for the adventurous appetite.

• New England Carp Chowder - economical-one carp = feed a convention.

• Sucker Meat and Dumpling Soup - don't be suckered, it's better than it sounds.

• Grosbeak Goulash - grossly underrated.

• Screech Owl and Egg Omelet - a rousing way to start the day.

Of course, the above scrumptious entrées are still works in progress. Each dinner-critter will require a cadaver-specific recipe. However, I can safely predict one ingredient that will be common to all. Tabasco Sauce. Lots of Tabasco Sauce. Other issues to be dealt with include alienating appearance,

palatability, plausibility and the name-association fear factor.

Ultimately, it is my fondest hope that uncommon times never come about. Nevertheless, local residents can rest easy knowing someone is already developing untraditional fare needed should such dire days arrive. Who knows, my dinner-critter recipes may even go mainstream and be served in restaurants across the tri-city area. I'll keep ya posted.

Art lives in Harrison, Montana. His essays, stories and poetry, have been published in regional newspapers and literary magazines.



Art Kehler

CommodityInsite.com

By Jerry Welch for THE MADISONIAN

YES, DIDDLE IN THE MIDDLE

A year ago, this month, I forec***Commodities rose to a three-month high after the Bank of Japan said it will introduce open-ended asset purchases from 2014, boosting speculation that a revival of the economy will raise demand for natural resources.

Japan going for more growth, and preparing to see higher inflation as a result, is another way of trying to generate more activity in the economy," Ole Hansen, head of commodity strategy at Saxo Bank A/S said by phone from Copenhagen. "Better economic sentiment is doing the trick here" and boosting commodity prices, he said." Bloomberg.com 1-21-13

**"Seasoned investors know that the best time to buy stocks is when most others are bearish and selling, and the best time to sell is when others are bullish and buying.

So now may be a time to consider selling. The American Association of Individual Investors found that 46 percent of its members were bullish in the week ended Jan. 9, The Wall Street Journal reports.

That's up nearly 8 percentage points from a week earlier and well above the long-term average of 39 percent. "Investors must understand how poor their instincts really are," The Journal states." Money News.com 1-21-13

***"It's a pivotal year for commodities," Dan Basse of AgResource Company told the crowd at the annual National Broker Meeting sponsored by ADMInvestor Services (ADMIS) in Chicago this weekend.

"The world has 'destocked,' and we continue to face volatility caused by the drought and the financial situation. We're at the lowest stocks-to-use ratio for corn that we have seen since 1974. That means there is no room for anything but normal weather." AgricultureOnline.com 1-21-13

***"Exports from the U.S. are set to pick up in 2013 after slumping last quarter as global growth strengthens from Asia to Latin America, giving American manufacturers a boost.

Industries in which U.S. companies have a competitive advantage, including agriculture, medical supplies and aviation, will probably benefit the

most from improving global demand, said Gary Hufbauer, a senior fellow at the

Washington-based Peterson Institute for International Economics." Bloomberg.com

**"The severe drought that swept through much of the U.S. last year is continuing into 2013, threatening to cripple economic growth while forcing consumers to pay higher food prices.

The drought will have a significant impact on prices, especially beef, pork and chicken," said Ernie Gross, an economic professor at Creighton University and who studies farming issues. "Forecasts are for a four percent (price) increase in food this year, but I think that's on the low side if the drought continues," Gross said.

"Food prices will likely be going up much more than the forecast." CNBC.

***"Consumer sentiment

remains gloomy, but the market may be saying it's time to cheer up. The good times could be back for a while and dare we say it? Stocks could be at the start of a secular bull market.

The latest optimistic sign came from the Dow Jones Transportation Average, which hit a high last week and is up 7.3% already this year. This implies that some of the most cyclical, economically sensitive stocks -- those of airlines, railroads, and the like -- are having a banner year and don't anticipate the much-feared recession." Barrons.com 1-21-13

**Apple Inc.'s shares fell by as much as 12 percent on Thursday, staging their biggest percentage drop in over four years and slicing more than \$50 billion from the company's market value, as disappointing holiday-period iPhone sales reinforced fears it is losing its dominance in smart

phones.

During the last hour of trading in New York, Apple's shares were down \$60.11, or 11.7 percent, at \$453.90, after trading as low as \$450.66 shortly after the Nasdaq open.

The stock hit a peak close of \$702.10 on September 19, valuing the company at \$658 billion. Since then, it has lost about \$225 billion, or 35 percent, of its in market value -- or about the entire worth of Chevron Corp., the second biggest U.S. oil company." MoneyNews.com

**"The cattle market should soon shift from burdensome supplies such as large slaughter rates and historically high animal weights to a much tighter scenario. Weights should soon come down, daily kills lighten and cow slaughter to decline. All bullish tail winds for cattle futures."

Jupiter shines brightly in the evening sky to be joined briefly by speedy Mercury. Before Jupiter sets, Saturn takes its place in the night sky. Just before sunrise, Venus makes a brief early February appearance to be lost into the solar glare until it reappears in the evening sky in April.

As darkness falls, the innermost planet Mercury puts in one of its brief appearances, making its first evening showing of the year. During the early part of February, Mercury rises higher and higher in the evening sky. Look low in the western sky to see Mercury just below the thin crescent Moon on Feb. 11. For owners

high up in the southeastern sky as the sky darkens to be paired with the reddish star Aldebaran, the brightest star in the constellation Taurus, the bull. Not far away in the opposite direction from Jupiter

the evening sky in late April.

Look for the Moon just below Saturn on the morning of Feb. 3. As noted earlier, the Moon appears just above Mercury and Mars on Feb. 11. Feb. 17 finds the Moon

just below and to the right of Jupiter and just above and to the left of the giant planet the next night. The Moon is Full on Feb. 25. On Feb. 28, the Moon is extremely close to the bluish star, Spica, the brightest star in the constellation Virgo.

For meteor shower watchers, there are no major meteor showers this month. However, a sporadic meteor can flash across the sky at any time. From a dark site, meteors typically can be seen at a rate of about 5 meteors per hour.

You may hear on the news about a gymnasium-sized small asteroid that will make a very close approach to Earth on Feb. 15, passing within 18,000 miles of Earth during daylight hours for Montana. That's closer than our communications satellites. It will be the closest approach of a natural object predicted well in advance of its passage, but it will pose no danger to Earth.

Montana's Night Sky

By Richard Stouffer
for THE MADISONIAN

Highlights for FEBRUARY

of a good set of binoculars, scan just below Mercury to catch a last glimpse of Mars before it disappears into the solar glare, not to be seen again until it reappears in the morning sky in May. Mercury reaches its peak visibility on Feb. 16 before it sinks rapidly into the solar glare to be lost from view about a week later. The most dominant planet in the evening sky is brilliant Jupiter, which stands

is Pleiades, the most famous star cluster in the sky. Before Jupiter sets in the early morning sky, Saturn rises around 1 a.m. as February begins and about 11 p.m. by the end of the month. With no bright stars nearby, Saturn stands out in this portion of the sky. The brightest planet, Venus, is briefly visible just before sunrise the first week of February, but is then lost in the solar glare until it reappears in



The REAL ESTATE CORNER

FIVE KEY AREAS TO PAY ATTENTION TO WHEN BUYING A HOME

Holly Driskill
PRUDENTIAL REAL ESTATE

When you are searching for a new home it can be very exciting and also very frustrating. If you pay close attention to five key areas of the homes you are considering, it may save you money in the long run.

Electrical: Owners often assume with newer homes that all is fine with the electrical. That is not always the case. If the electrical is done incorrectly, you may have problems. That is why a complete home inspection will help rule out any problems and point out any areas of concern.

Foundation: The foundation is also something that needs to be inspected thoroughly. There are typical cracks and there are atypical cracks. Some may lead to problems while others

won't. A telltale sign is if the windows are not opening and closing properly; this could mean that the foundation is moving.

Plumbing: Plumbing is an area that you can't always spot as easily but it can create expensive repairs if plumbing issues go either undetected or are not properly fixed. Check underneath the sinks for cracks and point them out to your inspector.

Attic: You can tell everything about the house by the attic. Other areas of the home can be covered up if a repair had occurred. For instance, if there is a leak and it damaged a wall, with the right contractors and repairs it can be made to look like new. The attic is sort of the soul of the home. In the attic you can tell where all the damage has been.

Landscaping: There

should be a 12-inch barrier between the landscape and the house. Otherwise you have the risk of having the foundation crack and affect the home. When the landscape that is too close to the house is watered, the foundation and soil expand. Then when no watering occurs, the foundation dries up and shrinks and this can cause it to crack.



Holly Driskill

Always remember to include these in your inspection. This may help you keep from making a mistake that may cost you money later.

Breakfast & Lunch Menu

ENNIS

Lunch includes: fresh salad/fruit bar & milk

Thursday - January 31

Breakfast - Ham & cheese omelette

Lunch - Meatball sandwich, tots

Friday - February 1

Breakfast - Egg & sausage muffin

Lunch - Pizza

Monday - February 4

Breakfast - Muffins

Lunch - Chicken strips, tater tots

Tuesday - February 5

Breakfast - French toast, ham

Lunch - Ravioli, bread stick

Wednesday - February 6

Breakfast - Biscuits & gravy

Lunch - Beef stroganoff

HARRISON

Thursday - January 31

Breakfast - Pigs in a blanket

Lunch - Cook's choice

Friday - February 1

Breakfast - Sausage patties, pancakes, fruit

Lunch - Chicken black bean tacos, rice, salad

SHERIDAN

Breakfast Buffet: Toast, bagel or muffin, fruit, yogurt, eggs, hot & cold cereal, milk, juice (first & last day of week includes: eggs, ham, sausage of bacon)

Lunches include: vegetables, fruit and milk

Thursday - January 31

Breakfast - Waffle stick, sausage patty

Lunch - Beef taco salad, corn

Friday - February 1

NO SCHOOL

Monday - February 4

Breakfast - Muffin, Cereal

Lunch - Hot dog, french fries

Tuesday - February 5

Breakfast - Whole wheat pancakes, sausage link

Lunch - Chicken Fajitas

Wednesday - February 6

Breakfast - Whole wheat bagel with topping

Lunch - Spaghetti, peas, bread sticks

TWIN BRIDGES

All breakfast menus include: toast, fruit, milk, juice

All lunch menus include: salad bar, fruit, cold milk

Thursday - January 31

Breakfast - Choice cereal, bagel w/ cream cheese

Lunch - Tacos, jello

Friday - February 1

Breakfast - Apple or cherry crisp

Lunch - Sloppy joes, chips

Monday - February 4

Breakfast - Stuffed hashbrowns

Lunch - Ravioli, french bread

Tuesday - February 5

Breakfast - Choice cereal, yogurt

Lunch - Corn dogs, macaroni and cheese

Wednesday - February 6

Breakfast - Waffles

Lunch - Chow mein, rice

Ennis Meals on Wheels

Wednesday, January 30 - Meatloaf, potatoes, corn, pickled beets, bread, danish roll

Thursday, January 31 - Turkey soup, ham salad sandwich, potato chips, relish tray, banana bread & peaches

Friday, February 1 - BUFFET

Tuesday, February 5 - Roast beef, rice casserole, broccoli, carrots, cottage cheese and peach salad, bread, danish roll

Wednesday, February 6 - Goulash, green beans, pears, cheese salad, garlic bread, cake

Tuesday, February 7 - Chicken rice pilaf, carrots, pears & cheese salad, bread, tapioca with topping

Ennis Town Hall, Tuesday - Friday at NOON.
We ask a \$4 minimum donation for meals.
On Fridays you can take what is left over home (bring your own containers). All meals are subject to change without notice. Please call 682-4550 for questions or to request delivery.

Our Manor

By Karen Claassen
FOR THE MADISONIAN

"Brand-New World"
By Claire Mitchell

There's a brand-new world outside my door,
A world I've never seen before,
A pure white world no foot has trod,
A world that still belongs to God.

A reverent world, where even trees
Are offering prayers on bended knees,
Their heads bowed low, till sun's caress
Shall bid them rise, His name to bless.

This virgin world before me lies
To make my own through loving eyes;

I drink it deep, so deep, and then
I give it back to God again.

2013 can open many doors, with new adventures and new opportunities for all of us. We have the chance to rectify our past mistakes and gain new perspective in what we see! What occupies our time can be very exciting as we express our love all around.

Hopefully heaven's glorious light will touch all of us this year as we spread the new year's greetings. We can share these special ideas with each other.

Our monthly birthday party included: me, Bev M., Ed W., and Allen R.

God bless you all and I hope this new year will be prosperous for everyone!



AROUND THE WOOD STOVE

by Gail Banks

Wishes and prayers go out to Marc Caprara and his family, while Marc is having heart surgery this week in Cleveland. I was just reading a note from his wife, Lisa, and she was saying that he is doing well after the surgery. You can send messages to Marc and Lisa on Facebook. Hopefully they will be home in Helena soon. This was a big operation for Marc, so thank the Lord he is doing well.

Much sympathy goes out to the family of Frances Larson from Sheridan, with her passing. Her family and friends will miss her; she was always on the move helping someone.

I received word this weekend

that my uncle Reid Edwards had a fall in his home. He had such traumatic head injuries that he passed away. Reid had many ties to this area as the Edwards were raised in Cardwell. Reid's brother, Bob Edwards was from Pony. His sisters, Frances Fenton from Sheridan, Cena Shaw from Whitehall, and my mom, Betty Patacini from Whitehall are all deceased. Only two brothers, Joe and Phil, are left in the original family. Reid was married to Bev Scott from Whitehall for 58 years. I always say that you never know how your life may be one minute from now. Don't leave important things unfinished. You just never know.

Happy Birthday to my aunt, Ruby Dale Fouts. Ruby and Don ranched most of their married life in the Waterloo area. Ruby turned 91 and her sister, Vernie, turned 95 the week before. My dad, who is the baby of the family will turn 90 in April and one other living sister Elsie, 93 in June. What is the secret for their long, fairly healthy lives? GARLIC.

I had a friend send me a youtube video on Archie Bunker.

They know I enjoy Archie; he rather reminds me of my dad. Anyhow, I forwarded it to some friends and added the following fact about Archie Bunker: Archie, of course, is really Carroll O'Conner when out of the Archie part. Byron Bayers from Twin Bridges was telling me that he went to college with Carroll O'Conner at the University of Montana in Missoula. Byron added that they didn't take a lot of classes together because, unlike Byron, Carroll took many drama classes.

Sounds like we might be getting some more snow and the cold may be returning. I talked to my son Luke who is on a job in North Dakota and he said it was 18-below there. Yuck! I can live wit the snow, but I don't like the cold. I froze my hands, fingers and toes too many times when I was young; now, if they just hear the weather report, they start hurting from the cold.

What have we learned this week? We all have our own struggles we are going through, let us not make it any harder on each other. To be kind and loving is easier and far more rewarding.

It's true that we don't know what we've got until we lose it; but it's also true that we don't know what we've been missing until it arrives. When you're right, no one remembers. When you're wrong, no one forgets. Cheer up; the worst is yet to come. If you can't see the bright side of life, polish the dull side. Everyone wants to go to heaven, but no one wants to die. You have a cough? Go home and eat a whole box of Ex-Lax, tomorrow you'll be afraid to cough. Before you criticize someone, walk a mile in their shoes. That way, you'll be a mile from them and you'll have their shoes. You know when you are too drunk to drive? When you swerve to miss a tree then realize it was your air-freshener. Change is good but dollars are better.

Ground hog day is next week. Personally, I hope spring is coming very soon. I vote no for six more weeks of winter.

Two more weeks and the Basketball tournaments start for area schools. That season sure went fast.

"Wear short sleeves. Support your right to bare arms..."

McAllister resident named on OBU honor roll

From Julie McGowan

McAllister resident Robert Nelson, a freshman Christian studies major, was named to Oklahoma Baptist University's Dean's Honor Roll for the fall 2012 semester.

Students who achieved a

semester grade point average of 3.7 or higher on a 4.0 scale are named to the President's Honor Roll. Those who achieved a grade point average between 3.4 and 3.69 are listed on the Dean's Honor Roll.

With campuses in Shawnee, Okla., and Oklahoma

City, OBU offers 10 bachelor's degrees with 84 fields of study and two master's degree programs. The Christian liberal arts university has an overall enrollment of 1,979, with students from 37 states and 26 other countries. OBU has been rated as one of the top 10

comprehensive colleges in the West by U.S. News and World Report for 21 consecutive years and has been Oklahoma's highest rated comprehensive college in the U.S. News rankings for 19 consecutive years.

Trinity Episcopal Church to host Shrove Tuesday Pancake Dinner fundraiser

On Tuesday, Feb. 12, from 5-7 p.m., Trinity Episcopal Church in Jeffers will kick off the Lenten season by putting on their annual Shrove Tuesday Pancake Dinner. Everyone is invited to enjoy great pancakes and sausages prepared by the men of the congregation. You can't beat good food and fellowship. Donations will

be taken at the door and all proceeds will go to the local food bank.

The Trinity Men's Group would like to thank Madison Foods, Ennis Café and Yesterday's Café for their kind and generous donations, which substantially support the food bank on behalf of the Madison Valley community.

Madison Valley Lenten Breakfasts Schedule

- MADISON VALLEY PRESBYTERIAN CHURCH:**
Wed., Feb. 20
- ENNIS ASSEMBLY OF GOD CHURCH:**
Wed., Feb. 27
- MADISON VALLEY BAPTIST CHURCH:**
Wed., Mar. 6
- ST. PATRICK'S CATHOLIC CHURCH:**
Wed., Mar. 13
- TRINITY EPISCOPAL CHURCH:**
Wed., Mar. 20

All meals are served at 6:30 a.m.

Find Fellowship With Us

Rocky Mountain Baptist Church

Vern Grotzke, Pastor
682-4949

Sunday School 9:30 a.m.
Morning Worship 11 a.m.
Evening Service 6 p.m.
Mid-Week Service,
Wednesday 6 p.m.

606 Comley Way, Ennis
6 Blocks South of City Complex

Located in the heart of
Madison Valley for the
Hearts of Madison Valley

Dayspring Church

Worship 10:00 a.m.
Sunday School/Nursery

Non-Denominational Christ
Centered, Spirit Led Worship

Franklin Wesselius, Pastor
842-5724

842-5724 • 3648 Hwy 287
Between Sheridan & Twin Bridges

HARRISON COMMUNITY CHURCH

Harrison, Montana

Adult Bible Study ~ 9:30 a.m.

Sunday School &
Church Services ~ 10:30 a.m.

Pastor Joe Miller

Come Worship & Sing Praises
To Our God. Spread the Word!



Madison Valley Presbyterian Church

September - April ~ 11 a.m.
May - August ~ 9 a.m.

Everyone Welcome

Rev. Jean M. Johnson
682-4355 ~ Ennis
Corner of S. Charles & W. Hugel



Liturgy Schedule
St. Patrick, Ennis
Sunday ~ 10:30 a.m.

St. Mary, Laurin
Sunday ~ 8:30 a.m.

Deacon Andy Dorrington,
Pastoral Administrator ~ 842-5588

Shepherd of the Hills Lutheran Church

The Church of Word and Sacrament
Visitors Welcome

Pastor Ken Stensrud

- Sunday Service 9:00 am
- Bible Study 10:15 am
- Sunday School 10:15 am

Corner of Madison and Armitage St.
Ennis, Montana 406-682-4990

CHURCH OF JESUS CHRIST OF LATTER-DAY SAINTS

Ennis Branch

R S & Priesthood

12:10 p.m.

Sunday School

11:20 a.m.

Sacrament Meeting

10:00 a.m.

Family History Center

by Appointment

682-4911, 682-7415, 682-3614

Pres. Adamson 682-5070

Christian Science Society

Sunday Service &
Sunday School 10 a.m.

1st & 3rd Wednesdays

Testimony Meetings 1 p.m.

ALL WELCOME

Each week a Bible lesson full of
healing Christian concepts is read
aloud in our Sunday service.

4983 US Hwy 287 N. • Ennis, Montana

www.spirituality.com

THE BAHAI FAITH

On the appearance of fearful natural events call ye to mind the might and majesty of your Lord, He Who heareth and seeth all, and say "Dominion is God's, the Lord of the seen and the unseen, the Lord of creation.

451-3923 or 1-800-UNITE
www.baha'i.org

ENNIS ASSEMBLY OF GOD

Love God, Love People

Pastor Charles Tucker

SUNDAY SERVICE

Schedule

Bible Study

Worship Service 10:45 a.m.

Children's Church 10:45

402 Madison Ave - Ennis, MT
589-4107

Madison County Episcopal Churches

In full communion with the Evangelical Lutheran Church in America

Join Us for Sunday Worship!

Trinity St. Paul's Christ Church

Jeffers/Ennis Virginia City Sheridan

Sunday Sunday Sunday

11:00 a.m. 9:00 a.m. 10:00 a.m.

www.rvec.org Bible Study

Prayer requests: 9:00 a.m.

682-4788 843-5296 842-7713



NEW BEGINNINGS CHRISTIAN FELLOWSHIP

Your Local Assembly of God Church

114 N. Main, Sheridan

842-5845

Pastor Lonnie Horn

Sunday Service

10:30 a.m. (Children's Ministry)

Tuesday Night

6:30-8:00 p.m.

Adult Bible Study and Prayer

Wednesday (Kids/Youth)

6:30-8:00 p.m.

Kid's Club (3 yrs-4th grade)

Pre-Teen Youth Group (5th-6th grade)

Youth Group (7th-12th grade)

Ruby Valley Food Pantry

Saturdays: 10:00 a.m.-Noon

New Hope Pregnancy Support Center

Call Kathleen at 596-1080

We are a church dedicated
to serving this valley!



Phil 2:16
Holding forth the word of life:

Dr. Ray Teston
Pastor

Sunday School ~ 9:45 a.m.
Morning Worship ~ 11:00 a.m.

5050 Hwy 287, PO Box 668, Ennis, MT
Phone 682-4244 SBC
MADISON VALLEY BAPTIST CHURCH
Aides for the hearing impaired

Ruby Valley United Methodist Parish

Invites You To Worship With Us

Pastor Ben Nardi

Office: (406)842-5934

Home: (406)842-7732

Church of the Valley

Twin Bridges

Sunday School 11:00 a.m.

Worship 11:00 a.m.

Bethel UMC

Sheridan

Worship 9:00 a.m.

Sunday School 10:15 a.m.

Extreme Faith Youth Group

Sunday Evenings

Ready Set Grow Preschool

Contact Kaycee Gilman 842-5311



SUNDAY SERVICES

9:30 a.m.

Barret Hospital Foundation awards funds to purchase anti-coagulation analyzer

From Stephanie Vinson
BARRETT HOSPITAL FOUNDATION

Barrett Hospital Foundation recently awarded \$33,000 to Barrett Hospital & HealthCare to purchase a new Siemens anti-coagulation analyzer.

The anti-coagulation analyzer is used to run a PTT test, which helps determine the cause of unexplained bleeding or clotting. The machine also

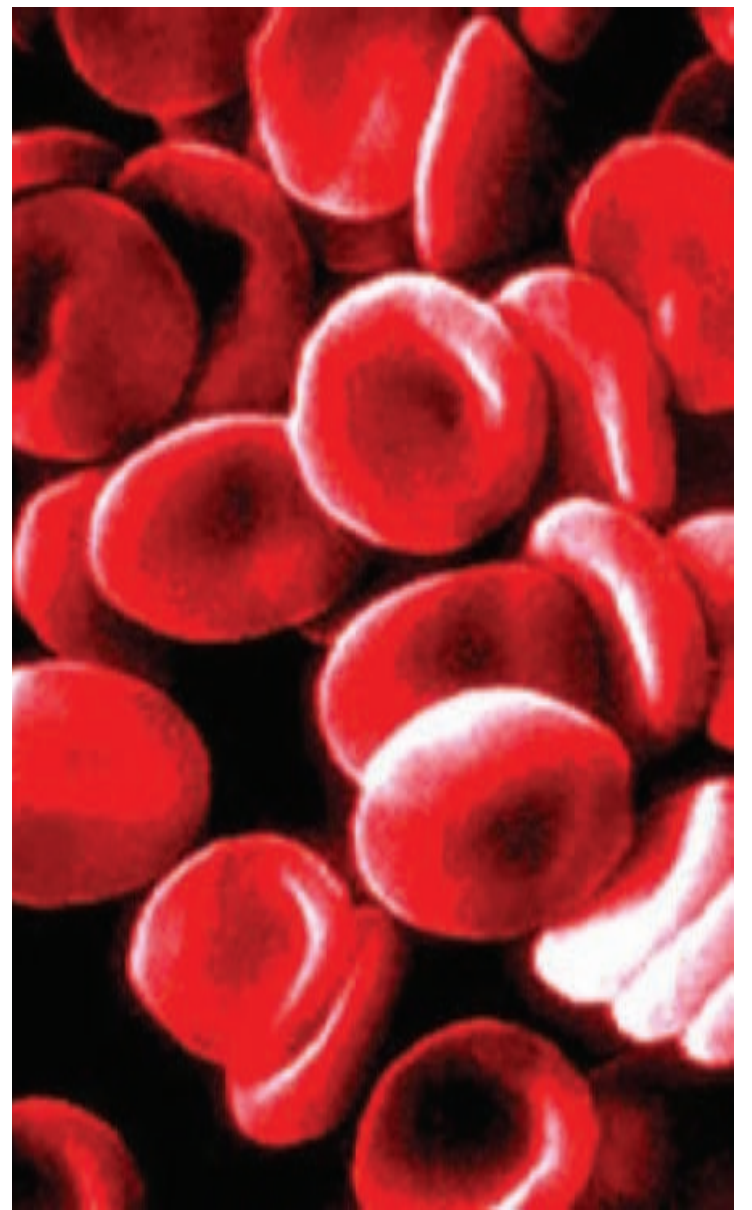
processes PT tests which are used to evaluate hemostasis (the clotting process). The analyzer is also able to detect D-dimers, which can indicate the presence of a variety of ailments including deep vein thrombosis or a pulmonary embolism. This upgraded technology also allows physicians to evaluate the effectiveness of treatment for excessive bleeding or dissolving clots.

According to Barrett Hospital & HealthCare Lab Manager, Larry Goss, "The machine will allow us to obtain results much faster, from a current time for many tests of 20 minutes to an average time of 4 minutes."

Many patients are on a prescription drug called Coumadin, which is used as a blood thinner to prevent blood clot formation. Clotting is an important natural mechanism

to stop a wound from bleeding, but internal blood clots are dangerous. These patients must closely monitor their clotting levels, and Barrett Hospital & HealthCare operates a "Coumadin Clinic" to assist in monitoring.

For more information, please contact Barrett Hospital & HealthCare Foundation at 683-6737.



2013 Madison County Relay for Life

By June Crouch
PUBLICITY CHAIR

The first meeting of Madison County Relay for Life 2013 committee was held on Jan. 22 at the Madison Valley Medical Center.

Save the date on your calendar for this year's Relay for Life KICK-OFF event, to be held on Feb. 23 in the

MVMC lobby from 10-12 p.m. We will be serving breakfast finger foods and holding drawings for door prizes and other prizes for team captains, including dinner and bowling for 2 at the Alley Bistro in Ennis.

There are still several positions open on the committee, including Event Co-Chair, Team Recruitment

Chair and Co-Chair, Entertainment Chair, Food Co-Chair, and Advocacy/Mission Statement Chair. Volunteers will be on hand at the KICK-OFF event to answer any questions you may have, so come even if you have not been involved in Relay for Life before. You can make a difference.

For more information,

contact Tana at 682-7317 or Halsey at 580-4277 or visit our website, www.relayforlife.org.



Score a touchdown with food choices

From Beth Maniero
TOPS CLUB, INC.

There are many different perspectives on what America's favorite pastime truly is. This time of year, watching football tends to top the list. With Sunday's schedule including "the big game," TOPS offers tips to help keep nutrition on track when cheering on your favorite team.

Have a small snack before you arrive at a party to curb your appetite. Overeating can be avoided if you don't arrive hungry. Start out with

foods that will leave you feeling fuller faster, like nuts. A handful of almonds, containing about 160 calories, is a smart choice.

Offer to bring a fruit platter or veggie tray, broth-based soup made with fresh or frozen vegetables, flour tortillas sprinkled with Parmesan cheese and baked, or sugar-free pudding to the buffet. Then you'll have a healthy option to snack on.

Go easy on anything with a thick, creamy consistency like dips or casseroles. Most often these foods are high in calories and not very filling.

Take a walk around the buffet and consider your choices before putting anything on your plate. If you choose to have a high-fat or high-calorie item (wings, pizza, or nachos), take only a small amount and put it on your plate last, after you've filled up the space with healthier options.

Consider guacamole. Guacamole is high in the "good" types of fat—mono and polyunsaturated. Guacamole is also high in beta-carotene, fiber, folate and potassium, making this a relatively guilt-free option.

Limit alcohol. Not only is it high in calories, alcohol causes blood sugar to drop, which leads to hunger. If you do imbibe, consider light beer and stagger alcoholic beverages with non-alcoholic ones.

Pick filling protein over high-carb offerings, including shrimp with cocktail sauce or smoked salmon served with cocktail rye.

Visitors are welcome to attend their first TOPS meeting free of charge. For more information call Jeannie at 682-3299.



Ennis Physical Therapy

Robert "Bob" Sahli PTATC

110 South First • 682-3112

Monday through Friday • 9:00-5:00 pm

The Cornerstone of patient focused Physical Therapy in the Madison Valley

15 years of experience in Physical Therapy and Sports medicine

State of the art Rehabilitation facility specialized in:

Neck, Back and Joint injuries.

Preventive Services

Pain Control

Body Movement Analysis

Before and After surgical care

Custom Orthotic Fabrication (shoe inserts)

Latest Modalities for pain control, healing and strengthening:

Lazer Therapy

Ultrasound

Interferential Current

Preferred Blue Cross/Blue Shield,

Workers compensation and Medicare provider.

Local electronic insurance claims submission for medicare, medicaid, private health insurance and workers compensation.

Ruby Valley Hospital Physical Therapy
Occupational & Speech Therapy
Hands on care for all your body needs.

Orthopedic & Sports Injuries
Total Joint Rehabilitation
Back & Neck Care
Sore Stressed Muscles
Tension Headaches & Chronic Pain

Self Care
Home Safety
Adaptive Equipment
Hand, Wrist - & Elbow Syndromes
Neurological Rehabilitation

Available Mon.-Fri. at Ruby Valley Hospital
220 E. Crofoot, Sheridan, MT 59749-9508 **406-842-5081**

RUBY VALLEY MEDICAL CLINICS

Sheridan 210 E Crofoot (406) 842-5056
Twin Bridges 104 S Madison (406) 684-5546

SERVICES OFFERED:

- * Office Visits
- * Cardiac Rehab
- * Well-Woman Exams
- * DOT Physicals
- * Sports Physicals
- * Well-Child Check-Ups
- * Life Insurance Exams
- * Acute and Chronic Health Care

ALSO PLEASED TO OFFER:

- * Sliding Scale Program (based on income)
- * Payment Plans
- * Accepting Most Insurances including Medicare & Medicaid

Patrick Watson PA-C, Chris Hartsfield APRN, FNP-BC, Kathy Tetrault PA-C, Roman M. Hendrickson, M.D.

WWW.RUBYVALLEYHOSPITAL.COM

CHC WECLOMES
Doctor Kelli Christensen
TO THE SHERIDAN CHC

Accepting new patients
January 14, 2013

Call 842-5103 for an appointment

- Board Certified Family Practice Physician
- Provides care to family members of all ages
- Lives with her husband and two children in Sheridan Montana

Accept Medicaid, Healthy Montana Kids, Medicare, commercial insurance and sliding fee

Want to advertise in our **HEALTH & WELLNESS** section
Call Susanne at **406.682.7755**

FEBRUARY

MON	TUES	WEDS	THURS	FRI
				1 Moran Stearns
4 Marks Stearns	5 Marks Stearns	6 Marks Hensel Stearns	7 Hensel Moran	8 Blake Hensel Moran
11 Blake Marks Stearns	12 Blake Marks Stearns	13 Marks Hensel Stearns Holland	14 Hensel Moran	15 Hensel Moran
18 Blake Marks Blake Stearns 25	19 Blake Marks Moran Stearns 26	20 Hensel Stearns Hensel Stearns Holland 27	21 Moran Hensel Stearns Moran Hensel 28	22 Hensel Moran Stearns

MADISON Valley MEDICAL CENTER

Call 406.682.4223 to schedule an appointment with a provider of your choice • 8:30 am to 5:00 pm

305 North Main • Ennis, MT 59729
Clinic access through lower level.

Complete Family Medical Care:

- Pediatrics
- Adult Medicine
- Geriatrics
- Dermatology
- Gynecology
- Orthopedics
- Physical Exams

Dr. Curtis Blake, Family Medicine
Dr. RD Marks, Family Medicine
Marty Hensel, PA-C, Family Medicine
Morgan Stearns, PA-C, Family Medicine
Dr. Patrick Holland, Gynecology
Dr. Patricia Moran, Family Medicine

4TH ANNUAL

DINNER AND A SHOW

SATURDAY, FEB 9TH
SUPPER 5:30-7, SHOW 7-?

PRESENTING A "LIVE" RADIO DRAMA

A MONTANA HOME COMPANION

FEATURING
"THE TUNE TANGLERS"
 AND THE "PRESBYTUNES"

LASAGNA SUPPER **SILENT AUCTION**
HOMEMADE DESSERTS **PIE AUCTION**

Madison Valley Presbyterian Church
 cor. Hugel and Charles, Ennis
Freewill Offering
 Call 682-7670 if you have items to donate for the silent auction

ECCS to host farewell party for director

By Christine Kern

After more than four years of dedicated service, Sara Racine has resigned from her post as director of the Ennis Community Children's School. While the students, parents, staff and board members will miss her enthusiasm, love and warmth, we would like to wish her the best.

Over the years, many members of our community have had the opportunity to get to know Sara as she has shown the kids of ECCS around town on field trips, at fundraisers, and in her ever creative means of promoting ECCS to make it a better place. The Board of Directors wishes to invite the community to share our appreciation for Sara on Thursday, Jan. 31, from 3:30-5:30 p.m. at an open house party at ECCS, 315 W. Steffens St. in Ennis.

As always, we are looking to the future for it is truly a bright one for our young students. Yet at this time we cannot help but look to the past four years with fondness and gratitude for all that Sara has done for our school.

Ennis Community Children's School is a non-profit preschool serving the children of the Madison Valley since 1982. For more information about the school or the open house for Sara Racine, contact Christine Kern at bajamama2009@gmail.com or 600-7922.

Attention Veterans

There will be a meeting on Feb. 14 at 7:30 p.m. in the Montana Room of the Twin Bridges School.

We will be addressing two important issues. The first issue will be formalizing re-organization of American Legion Post #31.

Second, we will try to complete the organization of our new group, The United Veterans of Twin Bridges. This organization is open to military veterans of any branch who served or is serving with honor. This includes those currently on active duty or serving in the National Guard or Military Reserve.

Please make every effort to attend this important meeting.

Get Results.

advertise in The Madisonian
406-682-7755



Prudential
 Montana Real Estate

All the Listings, All the Time... PruMT.com

406.682.5002 | 123 East Main Street | Ennis

406.842.5650 | 118 South Main Street | Sheridan

406.684.5686 | 106 North Main Street | Twin Bridges



<p>57 JEFFERS LOOP SOUTH • ENNIS</p> <p>NEW LISTING 4 bd 2 ba 1,680+/-sf 40+/- rare acres yr round stream spectacular Mtn views #188054 \$950,000 406.682.5002</p>	<p>132 CANDLELIGHT MEADOW DR • BIG SKY</p> <p>NEW LISTING bank owned Firelight Meadows chalet river rock fireplace close to recreation #187958 \$161,900 406.682.5002</p>	<p>212 MADISON ST • SHERIDAN</p> <p>NEW LISTING 2 bd 1 ba 864+/-sf extensively remodeled hickory cabinets open floor plan #187554 \$99,000 406.684.5686</p>		
<p>BUFFALO LANCE • CAMERON</p> <p>nearly 71 acres native grasses wildflowers part densely wooded 1,089+/-sf, 2 bd, 1 ba #184236 \$799,000 406.682.5002</p>	<p>250 ASPENS AT INDIAN CRK • SHERIDAN</p> <p>3Bd, 3Ba 2,027+/-sf river rock fireplace massive log beams 20+/- acres Indian Crk frontage #184310 \$450,000 406.842.5686</p>	<p>102 S SANDERS ST • VIRGINIA CITY</p> <p>3 bed, 3 bath 2,453+/-sf rustic & custom close to FS built for 1or2 families agent owned #181496 \$299,000 406.682.5002</p>	<p>TWO BUMPS ROAD • ENNIS</p> <p>3 br, 2 bath, 1,836+/-sf manufactured home 6+ acres newly remodeled horses allowed #178145 \$179,000 406.682.5002</p>	<p>S BOULDER RIVER • CARDWELL</p> <p>beautiful 8+/- acres riverfront property several build sites off county road water, trees, views #179083 \$115,000 406.682.5002</p>
<p>103 E NINTH AVE • TWIN BRIDGES</p> <p>residential/commercial 1,344+/-sf 50'x134' lot open floor plan cinderblock exterior 184592 \$101,500 406.684.5686</p>	<p>TROUTDALE • MCALLISTER</p> <p>2 +/- acres building lots incredible views established subdivision yr round access #182380 \$80,000 406.842.5650</p>	<p>CORNUCOPIA RD • VIRGINIA CITY</p> <p>top of the world view recreational access 5 - 20+ acre parcels just outside of town building sites with vistas starting at: \$79,900 406.842.5650</p>	<p>GARDEN VALLEY GOLF VILLAGE • ENNIS</p> <p>1/2 to 2 acre properties golf course living strong covenants minutes to town H2O, power & phone starting at \$44,900 406.682.5002</p>	<p>317 MAIN • TWIN BRIDGES</p> <p>PRICE REDUCED start of a 25.5' x 62' bldg 50 X 184 sqft lot permanent foundation residential/commercial #186520 \$39,000 406.684.5686</p>

COMMITTED TO OUR COMMUNITY

"Community" is all about a group of people uniting around common passions. And let's be honest, there are A LOT of things people are passionate about... football, running, sewing, comic books, churches, The Grateful Dead, the outdoors, college basketball, the Bible... just to name a few. And from what we have experienced, when a group of people are united behind feeding the hungry, praying for the sick, or even just walking through life together, a very powerful and intimate community is created. And your ultimate buy-in helps to embed that change into the fabric of the community for future generations. Get involved in your community. Join an organization that you are passionate about and keep our little piece of Montana united.

An independently owned and operated broker member of BREP Affiliates, Inc. Prudential, the Prudential logo and Rock symbol are service marks of Prudential Financial, Inc. and its related entities, registered in many jurisdictions worldwide. Use under license with no other affiliation of Prudential Financial. Opportunity. All information contained herein is derived from sources deemed reliable, however, is not guaranteed by Prudential Montana Real Estate, Managing Broker, Agents or Sellers. Offering is subject to error, omissions, prior sales, price change or withdrawal without notice, and approval of purchase by Seller. We urge inspection, verification of each and every item submitted, to the satisfaction of any prospective purchaser.

OUTPOSTEVENTS.NET

SECTION C Thursday, January 31, 2013

GO TO outpostevents.net FOR A COMPLETE LISTING OF EVENTS



FOR A FULL SCHEDULE OF EVENTS FOR THE ENNIS FISH BOWL, SEE OUR AD ON THE COMICS & PUZZLES PAGE!

WEDNESDAY JANUARY 30

Ennis Public Schools Negotiations Meeting

A committee of the Board will meet with Superintendent Overstreet in the staff room at the high school to discuss the negotiation process. 3:30pm

A committee of the Board will meet with a committee of teachers and Superintendent Overstreet at the high school in an attempt to negotiate a tentative agreement subject to the ratification of a properly noticed and duly called school board meeting. 4 pm

Books and Babies, Ennis

Books and Babies is for babies, toddlers and their caregivers and is held every Wednesday at 10:30 a.m. at the Madison Valley Public Library. Books, music, songs, nursery rhymes, lullabies and toys. For more information call 682-7244.

TOPS, Ennis

TOPS members weigh in at 9 a.m. with a program at 9:30 a.m. in the lower level conference room of the Madison Valley Medical Center. For more information, call Jeannie at 682-3299.

Documentary film, Sheridan

Sheridan Public Library presents, "United State of ALEC" at 7 p.m. Documentary film on ALEC

(American Legislative Exchange Council) a vast network for corporate lobbying and political action committees aimed to increase corporate profits at public expense without public knowledge. Free admission.

THURSDAY JANUARY 31

Senior meals, Virginia City

Senior meals now being served in Virginia City for citizens 60 and over every Tuesday and Thursday at the Creamery for a nominal fee of \$3. Lunches served between 11:30 a.m. and noon.

Joint commission meeting, Twin Bridges
Madison/Jefferson joint commission meeting at 10 a.m. at Twin Bridges City Hall.

Sports schedule

For a full listing of area sports go to: www.outpostevents.net

FRIDAY FEBRUARY 1

Meals for seniors, Twin Bridges

The TBS&CC provides Meals for Seniors every Tuesday and Friday at 11:30 a.m. at the Wagon Wheel Restaurant in Twin Bridges for seniors 60 years and up. (Spouse and caregivers are invited.) Sign-in is requested and donation can be provided.

MSU Friday, Bozeman Montana State

University in Bozeman will open its campus, classrooms and activities to potential students during MSU Friday, the university's campus visitation program. MSU Friday is a free event open to all high school juniors and seniors



Submitted by Allison Clark
Bird "print" in Ennis, Montana.

and their families. Students may register online for MSU Friday at www.montana.edu/admissions/msufridayreg.shtml. For further information about MSU Friday, contact the MSU Office of Admissions at 1-888-MSU-CATS or (406) 994-2452.

Ice fishing tournament, Hebgen Lake

Annual North American Ice Fishing Circuit Tournament at Hebgen Lake, Feb. 1, 2, 3. Two-thirds education and one-third competition with a maximum entry of 150 two-person teams.

Live Music, Norris Hot Springs

Come soak and enjoy the acoustic rock sounds of Joe Schwem. Joe is one of our favorite performers at Norris. Music starts at 7pm. For more info go to: www.norrishotspings.com

Sports schedule

For full sports schedules go to: www.outpostevents.net

SATURDAY FEBRUARY 2

Ice fishing tournament, Hebgen Lake

Annual North American Ice Fishing Circuit Tournament at Hebgen Lake, continues Feb. 2 & 3. Two-thirds education and one-third competition with a maximum entry of 150 two-person teams.

Karaoke, Ennis

Come to the Longbranch Saloon for "Terrioke" karaoke with Sunrise Entertainment starting at 8 p.m.

Live Music, Norris Hot Springs

Kurt Prond brings his original folk and acoustic sounds to the dome tonight! Perfect music to soak to! Music starts at 7pm. For more information please visit: www.norrishotspings.com

Sports schedule

For full sports schedules go to: www.outpostevents.net

SUNDAY FEBRUARY 3

Ice fishing tournament,

Hebgen Lake

Annual North American Ice Fishing Circuit Tournament at Hebgen Lake, ends today. Two-thirds education and one-third competition with a maximum entry of 150 two-person teams.

Retirement party, Sheridan

Please join us in wishing Dr. Googe happy retirement and greet Dr. Kelli Christensen at Bethany Hall from 2 - 5 p.m.

Super Bowl parties, Ennis

Come to the Silver Dollar Saloon for a super party - potluck (bring your favorite dish), beer and drink specials, giveaways and good company.

Head down to the Sportsman's on Super Bowl Sunday. Free food, drink specials and football fun! Party starts at 2pm.

Live Music, Norris Hot Springs

Not into football? Did your team not make it this year? Head over to Norris and soak that body while enjoying music from the Free Radicals. The Free

Radicals are a local acoustic duo offering old time blues, rock and Americana. With guitars, keyboard, mandolin and blues harp, they serve up originals, along with an eclectic mix of covers from such artists such as Hot Tuna, The Band, The Rolling Stones, The Grateful Dead, Leon Redbone, Robert Johnson, and many old-time country blues artists. Dynamic and always entertaining, the Free Radicals play real music straight from the heart. For more info visit: www.norrishotspings.com

MONDAY FEBRUARY 4

Band and choir concert, Ennis

Montana Honors Band and Choir Concert at 7 p.m. at the Ennis High School gym. High School music students from eleven schools in southwest Montana will come together for a joyous concert. Students from Ennis, Sheridan, Twin Bridges, Deer Lodge, Whitehall, Harrison, Willow Creek, West Yellowstone, Butte, Philipsburg and Stillwater Christian will

Deemo's Meats
Owner, Chris DiMichele

DON'T FORGET DEEMO'S FOR ALL OF YOUR SUPER BOWL NEEDS!

- SMOKED SAUSAGES
- JERKY
- TAILGATING GOODIES
- FRONT STREET MARKET ITEMS

PARTY TRAYS UPON REQUEST!

160 N. Main St. - Ennis, MT
(406) 682-7306 or fax (406)682-4444

ARROW REAL ESTATE
Ennis, Montana

The OLD NORRIS SCHOOL HOUSE on 1-acre commercial lot on Hwy 287 in Norris has a long history as a café. This landmark historic building of 3,375 SF, built in 1906, is located strategically with major through traffic, less than 1 hour to Bozeman, 1/2 hour to Ennis and Harrison. Lots of possibilities. Building is cleaned out and ready to house a new business. \$175,000. (MLS #185758)

(406)682-4290 • 219 E. Main Street
P.O. Box 546 • Ennis, MT 59729
www.arrowreal.com • arrow@3rivers.net

4 RIVERS CONCRETE PRODUCTS
SHERIDAN, MT
WHITEHALL, MT

Quality Concrete - Premium Service

★ ★ ★ ★ ★

Front Discharge Trucks
Ready Mix Concrete
Washed Sand & Gravel

842-5735 • 287-3728

PUBLIC NOTICES

Reaching Madison County and the surrounding areas with your classified ad.
Call 682-7755 or toll-free 1-888-238-7849

NOTICE TO CREDITORS

MONTANA FIFTH JUDICIAL DISTRICT COURT, MADISON COUNTY
Probate No. DP-29-12-32
IN THE MATTER OF THE ESTATE OF IRENE E. GRADEN,
Deceased.

NOTICE IS HEREBY GIVEN that the undersigned have been appointed Co-Personal Representatives of the above-named estate. All persons having claims against the said deceased are required to present their claims within four (4) months after the date of the first publication of this notice or said claims will be forever barred.

Claims must be mailed to ERB & SUENRAM, PLLC, Attorneys for the Co-Personal Representatives, P.O. Box 1366, Dillon, Montana 59725, or filed with the Clerk of the above-entitled Court.

DATED this 27th day of November, 2012.
/s/ Sheryn A. Foster
Sheryn A. Foster
Co-Personal Representative
1409 Shenandoah Drive
Boise, ID 83712
/s/ Charene J. Emond
Charene J. Emond
Co-Personal Representative
700 9th Ave. SW
Great Falls, MT 59404
(Pub. Jan. 17, 24, 31, 2013) es

PUBLIC NOTICE

The terms of two (2) trustees of Sheridan School District No. 5 will expire this year: two (2) from Sheridan. Trustees are elected for three years. Anyone qualified and interested in running for these positions may pick up a nominating petition in the elementary school office.

The petitions must be turned into the elementary school office prior to 4:00 p.m. March 28, 2013, not less than forty (40) days before the election on May 7, 2013.

Linda E. Walter
District Clerk
(Pub. Jan. 17, 24, 31, 2013) ss

NOTICE OF TRUSTEE'S SALE

Trustee Sale Number: 12-00932-5 Loan Number: 0022888333 APN No: 29013005 TO BE SOLD For cash at Trustee's Sale on April 17, 2013 at the hour of 02:00 PM, recognized local time. On the front steps (North entrance) to the County Courthouse, 110 East Wallace, Virginia City, MT. The following described real property in Flathead County, Montana, to-wit: Unit 1429 of Beaverhead Condominium, Phase A and B, situated on Parcel A of Certificate of Survey in Book 7 of Surveys, page 435 and Parcel B of Survey recorded in Book 6 of Condominiums, page 381, as shown and designated on those certain Basic Unit Floor Plans and Site Map recorded in the office of the County Clerk and Recorder of Madison County, Montana being a portion of a tract of land located in the NE 1/4 and NW 1/4 of Section 30, Township 6 South, Range 3 East, P.M.M., Madison County, Montana (Amended Plat of Beaverhead Condo filed in Book 4 of Plats, page 601-BA, records of Madison County, Montana) TOGETHER WITH an undivided 1.97% interest in and to the Common Areas and Facilities appertaining to said unit, the Declaration for which was recorded April 13, 1981 in Book 276, page 851, and amended by instruments recorded in Book 277, page 321; Book 284, page 724; Book 291, page 850; and Book 298, page 432, the records of Madison County, Montana. more commonly known as: 1429 BEAVERHEAD, BIG SKY, MT. GREGORY L RUFF, A SINGLE PERSON as the original grantor(s), conveyed said real property to ALLIANCE TITLE AND ESCROW CORP, as the original Trustee, to secure an obligation owed to WELLS FARGO HOME MORTGAGE, INC. as the original Beneficiary, by a Trust Indenture dated as of July 18, 2003, and recorded on July 29, 2003 in Film No. 490 at Page 594 under Document No. 93467, in the Official Records of the Office of the Recorder of Madison County, Montana ("Deed of Trust"). The current beneficiary is: US Bank National Association, as Trustee, successor in interest to Wachovia Bank, National Association as Trustee for Wells Fargo Asset

Securities Corporation, Mortgage Pass-Through Certificates, Series 2005-AR10 (the "Beneficiary"). FIDELITY NATIONAL TITLE INSURANCE COMPANY was named as Successor Trustee (the "Trustee") by virtue of a Substitution of Trustee dated October 10, 2012 and recorded in the records of Madison County, Montana. There has been a default in the performance of said Deed of Trust: Failure to pay when due the following amounts which are now in arrears as of December 7, 2012: Balance due on monthly payments from March 1, 2011 and which payments total: \$43,299.76; Late Charges: \$673.84; Net Other Fees: \$105.00; Advances: \$2,673.24. There is presently due on the obligation the principal sum of \$351,735.95 plus accrued interest thereon at the rate of 2.87500% per annum from February 1, 2011, plus late charges. Interest and late charges continue to accrue. Other expenses to be charges against the proceeds include the trustee's or attorney's fees and costs and expenses of sale. The beneficiary has elected to sell the property to satisfy the obligation and has directed the trustee to commence such sale proceedings. The beneficiary declares that the grantor is in default as described above and has directed the Trustee to commence proceedings to sell the property described above at public sale, in accordance with the terms and provisions of this notice. The sale is a public sale and any person, including the beneficiary, excepting only the Trustee, may bid at the sale. The bid price must be paid in cash. The conveyance will be made by Trustee's Deed. The sale purchaser shall be entitled to possession of the property on the 10th day following the sale. The grantor, successor in interest to the grantor or any other person having an interest in the aforesaid property, at any the prior to the trustee's may pay to the beneficiary or the successor in interest to the beneficiary the entire amount then due under the deed of trust and the obligation secured thereby (including costs and expenses actually incurred and trustee's fees) other than such portion of the principal as would not then be due had no default occurred and thereby cure the default theretofore existing. SALE INFORMATION CAN BE OBTAINED ON LINE AT www.lpsasap.com AUTOMATED SALES INFORMATION PLEASE CALL 714-730-2727 DATED: December 7, 2012 FIDELITY NATIONAL TITLE INSURANCE COMPANY, Trustee By: Megan Curtis, Authorized Signature A-4351558 (Pub. Jan. 24, 31, Feb. 7, 2013) asap

the Loan was \$316,006.00. This amount includes the outstanding principal balance of \$308,793.90, plus accrued interest, accrued late charges, accrued escrow installments for insurance and/or taxes (if any) and advances for the protection of beneficiary's security interest (if any). Because of the defaults stated above, Beneficiary has elected to sell the Property to satisfy the Loan and has instructed Successor Trustee to commence sale proceedings. Successor Trustee will sell the Property at public auction the North Entrance of the Madison County Courthouse, 110 East Wallace St., Virginia City, MT 59755, City of Virginia City on April 12, 2013 at 2:00 PM, Mountain Time. The sale is a public sale and any person, including Beneficiary and excepting only Successor Trustee, may bid at the sale. The bid price must be paid immediately upon the close of bidding at the sale location in cash or cash equivalents (valid money orders, certified checks or cashier's checks). The conveyance will be made by trustee's deed without any representation or warranty, express or implied, as the sale is made strictly on an as-is, where-is basis. Grantor, successor in interest to Grantor or any other person having an interest in the Property may, at any time prior to the trustee's sale, pay to Beneficiary the entire amount then due on the Loan (including foreclosure costs and expenses actually incurred and trustee's and attorney's fees) other than such portion of the principal as would not then be due had no default occurred. Tender of these sums shall effect a cure of the defaults stated above (if all non-monetary defaults are also cured) and shall result in Trustee's termination of the foreclosure and cancellation of the foreclosure sale. The trustee's rules of auction may be accessed at www.northwesttrustee.com and are incorporated by the reference. You may also access sale status at www.Northwesttrustee.com or USA-Foreclosure.com. (TS# 7023.103422) 1002.234999-File No. (Pub. Jan. 24, 31, Feb. 7, 2013) fei

NOTICE OF HEARING
MONTANA FIFTH JUDICIAL DISTRICT COURT, MADISON COUNTY
Cause No. 5228
In the Matter of Formation of East Bench Irrigation District.
Notice is hereby given that a hearing regarding the Verified Petition to Extend Boundaries of East Bench Irrigation District has been scheduled for February 25, 2013 at 11:30 a.m. and will be held at the Virginia City Courthouse in Madison County.
(Pub. Jan. 24, 31, 2013) sn

NOTICE OF TRUSTEE'S SALE

Reference is hereby made to that certain trust indenture/deed of trust ("Deed of Trust") dated 12/14/11, recorded as Instrument No. 143739, mortgage records of Madison County, Montana in which Sheila Klatt, a single person was Grantor, Wells Fargo Bank, N.A. was Beneficiary and Alliance Title & Escrow Corp. was Trustee. First American Title Insurance Company has succeeded Alliance Title & Escrow Corp. as Successor Trustee. The Deed of Trust encumbers real property ("Property") located in Madison County, Montana, more particularly described as follows: Lot 24-B of Shining Mountains Air Park and Heliport, located in Section 31, Township 6 South, Range 1 East, P.M.M., Madison County, Montana, according to the official Plat thereof on file in Plat Book 4, Page 92, records of Madison County, Montana. More accurately described as: Lot 24-B of Mustang Ranches, Shining Mountains Air Park, the revised Plat of which is of record in the office of the Clerk and Recorder in Plat Book 4, Page 92, records of Madison County, Montana. Beneficiary has declared the Grantor in default of the terms of the Deed of Trust and the promissory note ("Note") secured by the Deed of Trust because of Grantor's failure timely to pay all monthly installments of principal, interest and, if applicable, escrow reserves for taxes and/or insurance as required by the Note and Deed of Trust. According to the Beneficiary, the obligation evidenced by the Note ("Loan") is now due for the 07/01/12 installment payment and all monthly installment payments due thereafter. As of November 29, 2012, the amount necessary to fully satisfy

the Loan was \$316,006.00. This amount includes the outstanding principal balance of \$308,793.90, plus accrued interest, accrued late charges, accrued escrow installments for insurance and/or taxes (if any) and advances for the protection of beneficiary's security interest (if any). Because of the defaults stated above, Beneficiary has elected to sell the Property to satisfy the Loan and has instructed Successor Trustee to commence sale proceedings. Successor Trustee will sell the Property at public auction the North Entrance of the Madison County Courthouse, 110 East Wallace St., Virginia City, MT 59755, City of Virginia City on April 12, 2013 at 2:00 PM, Mountain Time. The sale is a public sale and any person, including Beneficiary and excepting only Successor Trustee, may bid at the sale. The bid price must be paid immediately upon the close of bidding at the sale location in cash or cash equivalents (valid money orders, certified checks or cashier's checks). The conveyance will be made by trustee's deed without any representation or warranty, express or implied, as the sale is made strictly on an as-is, where-is basis. Grantor, successor in interest to Grantor or any other person having an interest in the Property may, at any time prior to the trustee's sale, pay to Beneficiary the entire amount then due on the Loan (including foreclosure costs and expenses actually incurred and trustee's and attorney's fees) other than such portion of the principal as would not then be due had no default occurred. Tender of these sums shall effect a cure of the defaults stated above (if all non-monetary defaults are also cured) and shall result in Trustee's termination of the foreclosure and cancellation of the foreclosure sale. The trustee's rules of auction may be accessed at www.northwesttrustee.com and are incorporated by the reference. You may also access sale status at www.Northwesttrustee.com or USA-Foreclosure.com. (TS# 7023.103422) 1002.234999-File No. (Pub. Jan. 24, 31, Feb. 7, 2013) fei

NOTICE OF HEARING
MONTANA FIFTH JUDICIAL DISTRICT COURT, MADISON COUNTY
Cause No. 5228
In the Matter of Formation of East Bench Irrigation District.
Notice is hereby given that a hearing regarding the Verified Petition to Extend Boundaries of East Bench Irrigation District has been scheduled for February 25, 2013 at 11:30 a.m. and will be held at the Virginia City Courthouse in Madison County.
(Pub. Jan. 24, 31, 2013) sn

NOTICE OF TRUSTEE'S SALE

TO BE SOLD FOR CASH AT TRUSTEE'S SALE on March 25, 2013, at 11:00 o'clock A.M. at the Main Entrance of the First American Title Company of Montana located at 122 South First Street in Ennis, MT 59729, the following described real property situated in MADISON COUNTY, Montana: A TRACT OF LAND SITUATED WITHIN THE NE 1/4 OF SECTION 5, TOWNSHIP 6 SOUTH, RANGE 1 WEST, P.M.M., MORE PARTICULARLY DESCRIBED ON CERTIFICATE OF SURVEY FILED IN BOOK 7 OF SURVEYS, PAGE 231, RECORDS OF MADISON COUNTY, MONTANA LESS AND EXCEPT THAT PARCEL DESCRIBED ON CERTIFICATE OF SURVEY FILED IN BOOK 7 OF SURVEYS, PAGE 245, RECORDS OF MADISON COUNTY, MONTANA Robert Floyd Opie, as Grantor(s), conveyed said real property to American Land Title Company, as Trustee, to secure an obligation owed to Mortgage Electronic Registration Systems, Inc., as Beneficiary, by Deed of Trust dated February 1, 2008 and recorded February 6, 2008 under Document No. 124416. The beneficial interest is currently held by CitiMortgage, Inc., First American Title Company, LLC, is the Successor Trustee pursuant to a Substitution of Trustee recorded in the office of the Clerk and Recorder of MADISON County, Montana. The beneficiary has declared a default in the terms of said Deed of Trust by failing to make the monthly payments due in the amount of \$1,274.96, beginning January 1, 2010, and each month subsequent, which monthly in-

NOTICE OF TRUSTEE'S SALE

TO BE SOLD FOR CASH AT TRUSTEE'S SALE on March 25, 2013, at 11:00 o'clock A.M. at the Main Entrance of the First American Title Company of Montana located at 122 South First Street in Ennis, MT 59729, the following described real property situated in MADISON COUNTY, Montana: A TRACT OF LAND SITUATED WITHIN THE NE 1/4 OF SECTION 5, TOWNSHIP 6 SOUTH, RANGE 1 WEST, P.M.M., MORE PARTICULARLY DESCRIBED ON CERTIFICATE OF SURVEY FILED IN BOOK 7 OF SURVEYS, PAGE 231, RECORDS OF MADISON COUNTY, MONTANA LESS AND EXCEPT THAT PARCEL DESCRIBED ON CERTIFICATE OF SURVEY FILED IN BOOK 7 OF SURVEYS, PAGE 245, RECORDS OF MADISON COUNTY, MONTANA Robert Floyd Opie, as Grantor(s), conveyed said real property to American Land Title Company, as Trustee, to secure an obligation owed to Mortgage Electronic Registration Systems, Inc., as Beneficiary, by Deed of Trust dated February 1, 2008 and recorded February 6, 2008 under Document No. 124416. The beneficial interest is currently held by CitiMortgage, Inc., First American Title Company, LLC, is the Successor Trustee pursuant to a Substitution of Trustee recorded in the office of the Clerk and Recorder of MADISON County, Montana. The beneficiary has declared a default in the terms of said Deed of Trust by failing to make the monthly payments due in the amount of \$1,274.96, beginning January 1, 2010, and each month subsequent, which monthly in-

NOTICE OF TRUSTEE'S SALE

TO BE SOLD FOR CASH AT TRUSTEE'S SALE on March 25, 2013, at 11:00 o'clock A.M. at the Main Entrance of the First American Title Company of Montana located at 122 South First Street in Ennis, MT 59729, the following described real property situated in MADISON COUNTY, Montana: A TRACT OF LAND SITUATED WITHIN THE NE 1/4 OF SECTION 5, TOWNSHIP 6 SOUTH, RANGE 1 WEST, P.M.M., MORE PARTICULARLY DESCRIBED ON CERTIFICATE OF SURVEY FILED IN BOOK 7 OF SURVEYS, PAGE 231, RECORDS OF MADISON COUNTY, MONTANA LESS AND EXCEPT THAT PARCEL DESCRIBED ON CERTIFICATE OF SURVEY FILED IN BOOK 7 OF SURVEYS, PAGE 245, RECORDS OF MADISON COUNTY, MONTANA Robert Floyd Opie, as Grantor(s), conveyed said real property to American Land Title Company, as Trustee, to secure an obligation owed to Mortgage Electronic Registration Systems, Inc., as Beneficiary, by Deed of Trust dated February 1, 2008 and recorded February 6, 2008 under Document No. 124416. The beneficial interest is currently held by CitiMortgage, Inc., First American Title Company, LLC, is the Successor Trustee pursuant to a Substitution of Trustee recorded in the office of the Clerk and Recorder of MADISON County, Montana. The beneficiary has declared a default in the terms of said Deed of Trust by failing to make the monthly payments due in the amount of \$1,274.96, beginning January 1, 2010, and each month subsequent, which monthly in-

stallments would have been applied on the principal and interest due on said obligation and other charges against the property or loan. The total amount due on this obligation as of December 8, 2012 is \$128,506.60 principal, interest at the rate of 5.7500% now totaling \$22,309.07, late charges in the amount of \$2,034.20, escrow advances of \$3,643.96, and other fees and expenses advanced of \$2,671.00, plus accruing interest at the rate of \$20.24 per diem, late charges, and other costs and fees that may be advanced. The Beneficiary anticipates and may disburse such amounts as may be required to preserve and protect the property and for real property taxes that may become due or delinquent, unless such amounts of taxes are paid by the Grantors. If such amounts are paid by the Beneficiary, the amounts or taxes will be added to the obligations secured by the Deed of Trust. Other expenses to be charged against the proceeds of this sale include the Trustee's fees and attorney's fees, costs and expenses of the sale and late charges, if any. Beneficiary has elected, and has directed the Trustee to sell the above described property to satisfy the obligation. The sale is a public sale and any person, including the beneficiary, excepting only the Trustee, may bid at the sale. The bid price must be paid immediately upon the close of bidding in cash or cash equivalents (valid money orders, certified checks or cashier's checks). The conveyance will be made by Trustee's Deed without any representation or warranty, including warranty of Title, express or implied, as the sale is made strictly on an as-is, where-is basis, without limitation, the sale is being made subject to all existing conditions, if any, of lead paint, mold or other environmental or health hazards. The sale purchaser shall be entitled to possession of the property on the 10th day following the sale. The grantor, successor in interest to the grantor or any other person having an interest in the property, at any time prior to the trustee's sale, may pay to the beneficiary or the successor in interest to the beneficiary the entire amount then due under the deed of trust and the obligation secured thereby (including costs and expenses actually incurred and attorney's fees) other than such portion of the principal as would not then be due had no default occurred and thereby cure the default. The scheduled Trustee's Sale may be postponed by public proclamation up to 15 days for any reason, and in the event of a bankruptcy filing, the sale may be postponed by the trustee for up to 120 days by public proclamation at least every 30 days. THIS IS AN ATTEMPT TO COLLECT A DEBT. ANY INFORMATION OBTAINED WILL BE USED FOR THAT PURPOSE. Dated: November 16, 2012

Dalia Martinez
Assistant Secretary,
First American Title Company, LLC
Successor Trustee
Title Financial Specialty Services
P.O. Box 339
Blackfoot ID 83221
STATE OF Idaho) ss. County of Bing-
ham) On this 16th day of November, 2012,
before me, a notary public in and for said
County and State, personally appeared Dalia
Martinez, know to me to be the Assistant
Secretary of First American Title Company,
LLC, Successor Trustee, known to me to be
the person whose name is subscribed to the
foregoing instrument and acknowledged to
me that he executed the same. Lisa J. Tor-
nabene Notary Public. Citimortgage Vs. Opie
42011.274
(Pub. Jan 31, Feb. 7, Feb. 14) apps

TO BE SOLD FOR CASH AT TRUSTEE'S SALE on March 25, 2013, at 11:00 o'clock A.M. at the Main Entrance of the First American Title Company of Montana located at 122 South First Street in Ennis, MT 59729, the following described real property situated in MADISON COUNTY, Montana: A TRACT OF LAND SITUATED WITHIN THE NE 1/4 OF SECTION 5, TOWNSHIP 6 SOUTH, RANGE 1 WEST, P.M.M., MORE PARTICULARLY DESCRIBED ON CERTIFICATE OF SURVEY FILED IN BOOK 7 OF SURVEYS, PAGE 231, RECORDS OF MADISON COUNTY, MONTANA LESS AND EXCEPT THAT PARCEL DESCRIBED ON CERTIFICATE OF SURVEY FILED IN BOOK 7 OF SURVEYS, PAGE 245, RECORDS OF MADISON COUNTY, MONTANA Robert Floyd Opie, as Grantor(s), conveyed said real property to American Land Title Company, as Trustee, to secure an obligation owed to Mortgage Electronic Registration Systems, Inc., as Beneficiary, by Deed of Trust dated February 1, 2008 and recorded February 6, 2008 under Document No. 124416. The beneficial interest is currently held by CitiMortgage, Inc., First American Title Company, LLC, is the Successor Trustee pursuant to a Substitution of Trustee recorded in the office of the Clerk and Recorder of MADISON County, Montana. The beneficiary has declared a default in the terms of said Deed of Trust by failing to make the monthly payments due in the amount of \$1,274.96, beginning January 1, 2010, and each month subsequent, which monthly in-

NOTICE OF TRUSTEE'S SALE

TO BE SOLD FOR CASH AT TRUSTEE'S SALE on March 25, 2013, at 11:00 o'clock A.M. at the Main Entrance of the First American Title Company of Montana located at 122 South First Street in Ennis, MT 59729, the following described real property situated in MADISON COUNTY, Montana: A TRACT OF LAND SITUATED WITHIN THE NE 1/4 OF SECTION 5, TOWNSHIP 6 SOUTH, RANGE 1 WEST, P.M.M., MORE PARTICULARLY DESCRIBED ON CERTIFICATE OF SURVEY FILED IN BOOK 7 OF SURVEYS, PAGE 231, RECORDS OF MADISON COUNTY, MONTANA LESS AND EXCEPT THAT PARCEL DESCRIBED ON CERTIFICATE OF SURVEY FILED IN BOOK 7 OF SURVEYS, PAGE 245, RECORDS OF MADISON COUNTY, MONTANA Robert Floyd Opie, as Grantor(s), conveyed said real property to American Land Title Company, as Trustee, to secure an obligation owed to Mortgage Electronic Registration Systems, Inc., as Beneficiary, by Deed of Trust dated February 1, 2008 and recorded February 6, 2008 under Document No. 124416. The beneficial interest is currently held by CitiMortgage, Inc., First American Title Company, LLC, is the Successor Trustee pursuant to a Substitution of Trustee recorded in the office of the Clerk and Recorder of MADISON County, Montana. The beneficiary has declared a default in the terms of said Deed of Trust by failing to make the monthly payments due in the amount of \$1,274.96, beginning January 1, 2010, and each month subsequent, which monthly in-

NOTICE OF TRUSTEE'S SALE

TO BE SOLD FOR CASH AT TRUSTEE'S SALE on March 25, 2013, at 11:00 o'clock A.M. at the Main Entrance of the First American Title Company of Montana located at 122 South First Street in Ennis, MT 59729, the following described real property situated in MADISON COUNTY, Montana: A TRACT OF LAND SITUATED WITHIN THE NE 1/4 OF SECTION 5, TOWNSHIP 6 SOUTH, RANGE 1 WEST, P.M.M., MORE PARTICULARLY DESCRIBED ON CERTIFICATE OF SURVEY FILED IN BOOK 7 OF SURVEYS, PAGE 231, RECORDS OF MADISON COUNTY, MONTANA LESS AND EXCEPT THAT PARCEL DESCRIBED ON CERTIFICATE OF SURVEY FILED IN BOOK 7 OF SURVEYS, PAGE 245, RECORDS OF MADISON COUNTY, MONTANA Robert Floyd Opie, as Grantor(s), conveyed said real property to American Land Title Company, as Trustee, to secure an obligation owed to Mortgage Electronic Registration Systems, Inc., as Beneficiary, by Deed of Trust dated February 1, 2008 and recorded February 6, 2008 under Document No. 124416. The beneficial interest is currently held by CitiMortgage, Inc., First American Title Company, LLC, is the Successor Trustee pursuant to a Substitution of Trustee recorded in the office of the Clerk and Recorder of MADISON County, Montana. The beneficiary has declared a default in the terms of said Deed of Trust by failing to make the monthly payments due in the amount of \$1,274.96, beginning January 1, 2010, and each month subsequent, which monthly in-

NOTICE OF TRUSTEE'S SALE

TO BE SOLD FOR CASH AT TRUSTEE'S SALE on March 25, 2013, at 11:00 o'clock A.M. at the Main Entrance of the First American Title Company of Montana located at 122 South First Street in Ennis, MT 59729, the following described real property situated in MADISON COUNTY, Montana: A TRACT OF LAND SITUATED WITHIN THE NE 1/4 OF SECTION 5, TOWNSHIP 6 SOUTH, RANGE 1 WEST, P.M.M., MORE PARTICULARLY DESCRIBED ON CERTIFICATE OF SURVEY FILED IN BOOK 7 OF SURVEYS, PAGE 231, RECORDS OF MADISON COUNTY, MONTANA LESS AND EXCEPT THAT PARCEL DESCRIBED ON CERTIFICATE OF SURVEY FILED IN BOOK 7 OF SURVEYS, PAGE 245, RECORDS OF MADISON COUNTY, MONTANA Robert Floyd Opie, as Grantor(s), conveyed said real property to American Land Title Company, as Trustee, to secure an obligation owed to Mortgage Electronic Registration Systems, Inc., as Beneficiary, by Deed of Trust dated February 1, 2008 and recorded February 6, 2008 under Document No. 124416. The beneficial interest is currently held by CitiMortgage, Inc., First American Title Company, LLC, is the Successor Trustee pursuant to a Substitution of Trustee recorded in the office of the Clerk and Recorder of MADISON County, Montana. The beneficiary has declared a default in the terms of said Deed of Trust by failing to make the monthly payments due in the amount of \$1,274.96, beginning January 1, 2010, and each month subsequent, which monthly in-

NOTICE OF TRUSTEE'S SALE

TO BE SOLD FOR CASH AT TRUSTEE'S SALE on March 25, 2013, at 11:00 o'clock A.M. at the Main Entrance of the First American Title Company of Montana located at 122 South First Street in Ennis, MT 59729, the following described real property situated in MADISON COUNTY, Montana: A TRACT OF LAND SITUATED WITHIN THE NE 1/4 OF SECTION 5, TOWNSHIP 6 SOUTH, RANGE 1 WEST, P.M.M., MORE PARTICULARLY DESCRIBED ON CERTIFICATE OF SURVEY FILED IN BOOK 7 OF SURVEYS, PAGE 231, RECORDS OF MADISON COUNTY, MONTANA LESS AND EXCEPT THAT PARCEL DESCRIBED ON CERTIFICATE OF SURVEY FILED IN BOOK 7 OF SURVEYS, PAGE 245, RECORDS OF MADISON COUNTY, MONTANA Robert Floyd Opie, as Grantor(s), conveyed said real property to American Land Title Company, as Trustee, to secure an obligation owed to Mortgage Electronic Registration Systems, Inc., as Beneficiary, by Deed of Trust dated February 1, 2008 and recorded February 6, 2008 under Document No. 124416. The beneficial interest is currently held by CitiMortgage, Inc., First American Title Company, LLC, is the Successor Trustee pursuant to a Substitution of Trustee recorded in the office of the Clerk and Recorder of MADISON County, Montana. The beneficiary has declared a default in the terms of said Deed of Trust by failing to make the monthly payments due in the amount of \$1,274.96, beginning January 1, 2010, and each month subsequent, which monthly in-

NOTICE OF TRUSTEE'S SALE

TO BE SOLD FOR CASH AT TRUSTEE'S SALE on March 25, 2013, at 11:00 o'clock A.M. at the Main Entrance of the First American Title Company of Montana located at 122 South First Street in Ennis, MT 59729, the following described real property situated in MADISON COUNTY, Montana: A TRACT OF LAND SITUATED WITHIN THE NE 1/4 OF SECTION 5, TOWNSHIP 6 SOUTH, RANGE 1 WEST, P.M.M., MORE PARTICULARLY DESCRIBED ON CERTIFICATE OF SURVEY FILED IN BOOK 7 OF SURVEYS, PAGE 231, RECORDS OF MADISON COUNTY, MONTANA LESS AND EXCEPT THAT PARCEL DESCRIBED ON CERTIFICATE OF SURVEY FILED IN BOOK 7 OF SURVEYS, PAGE 245, RECORDS OF MADISON COUNTY, MONTANA Robert Floyd Opie, as Grantor(s), conveyed said real property to American Land Title Company, as Trustee, to secure an obligation owed to Mortgage Electronic Registration Systems, Inc., as Beneficiary, by Deed of Trust dated February 1, 2008 and recorded February 6, 2008 under Document No. 124416. The beneficial interest is currently held by CitiMortgage, Inc., First American Title Company, LLC, is the Successor Trustee pursuant to a Substitution of Trustee recorded in the office of the Clerk and Recorder of MADISON County, Montana. The beneficiary has declared a default in the terms of said Deed of Trust by failing to make the monthly payments due in the amount of \$1,274.96, beginning January 1, 2010, and each month subsequent, which monthly in-

stallments would have been applied on the principal and interest due on said obligation and other charges against the property or loan. The total amount due on this obligation as of December 8, 2012 is \$128,506.60 principal, interest at the rate of 5.7500% now totaling \$22,309.07, late charges in the amount of \$2,034.20, escrow advances of \$3,643.96, and other fees and expenses advanced of \$2,671.00, plus accruing interest at the rate of \$20.24 per diem, late charges, and other costs and fees that may be advanced. The Beneficiary anticipates and may disburse such amounts as may be required to preserve and protect the property and for real property taxes that may become due or delinquent, unless such amounts of taxes are paid by the Grantors. If such amounts are paid by the Beneficiary, the amounts or taxes will be added to the obligations secured by the Deed of Trust. Other expenses to be charged against the proceeds of this sale include the Trustee's fees and attorney's fees, costs and expenses of the sale and late charges, if any. Beneficiary has elected, and has directed the Trustee to sell the above described property to satisfy the obligation. The sale is a public sale and any person, including the beneficiary, excepting only the Trustee, may bid at the sale. The bid price must be paid immediately upon the close of bidding in cash or cash equivalents (valid money orders, certified checks or cashier's checks). The conveyance will be made by Trustee's Deed without any representation or warranty, including warranty of Title, express or implied, as the sale is made strictly on an as-is, where-is basis, without limitation, the sale is being made subject to all existing conditions, if any, of lead paint, mold or other environmental or health hazards. The sale purchaser shall be entitled to possession of the property on the 10th day following the sale. The grantor, successor in interest to the grantor or any other person having an interest in the property, at any time prior to the trustee's sale, may pay to the beneficiary or the successor in interest to the beneficiary the entire amount then due under the deed of trust and the obligation secured thereby (including costs and expenses actually incurred and attorney's fees) other than such portion of the principal as would not then be due had no default occurred and thereby cure the default. The scheduled Trustee's Sale may be postponed by public proclamation up to 15 days for any reason, and in the event of a bankruptcy filing, the sale may be postponed by the trustee for up to 120 days by public proclamation at least every 30 days. THIS IS AN ATTEMPT TO COLLECT A DEBT. ANY INFORMATION OBTAINED WILL BE USED FOR THAT PURPOSE. Dated: November 16, 2012

Dalia Martinez
Assistant Secretary,
First American Title Company, LLC
Successor Trustee
Title Financial Specialty Services
P.O. Box 339
Blackfoot ID 83221
STATE OF Idaho) ss. County of Bing-
ham) On this 16th day of November, 2012,
before me, a notary public in and for said
County and State, personally appeared Dalia
Martinez, know to me to be the Assistant
Secretary of First American Title Company,
LLC, Successor Trustee, known to me to be
the person whose name is subscribed to the
foregoing instrument and acknowledged to
me that he executed the same. Lisa J. Tor-
nabene Notary Public. Citimortgage Vs. Opie
42011.274
(Pub. Jan 31, Feb. 7, Feb. 14) apps

TO BE SOLD FOR CASH AT TRUSTEE'S SALE on March 25, 2013, at 11:00 o'clock A.M. at the Main Entrance of the First American Title Company of Montana located at 122 South First Street in Ennis, MT 59729, the following described real property situated in MADISON COUNTY, Montana: A TRACT OF LAND SITUATED WITHIN THE NE 1/4 OF SECTION 5, TOWNSHIP 6 SOUTH, RANGE 1 WEST, P.M.M., MORE PARTICULARLY DESCRIBED ON CERTIFICATE OF SURVEY FILED IN BOOK 7 OF SURVEYS, PAGE 231, RECORDS OF MADISON COUNTY, MONTANA LESS AND EXCEPT THAT PARCEL DESCRIBED ON CERTIFICATE OF SURVEY FILED IN BOOK 7 OF SURVEYS, PAGE 245, RECORDS OF MADISON COUNTY, MONTANA Robert Floyd Opie, as Grantor(s), conveyed said real property to American Land Title Company, as Trustee, to secure an obligation owed to Mortgage Electronic Registration Systems, Inc., as Beneficiary, by Deed of Trust dated February 1, 2008 and recorded February 6, 2008 under Document No. 124416. The beneficial interest is currently held by CitiMortgage, Inc., First American Title Company, LLC, is the Successor Trustee pursuant to a Substitution of Trustee recorded in the office of the Clerk and Recorder of MADISON County, Montana. The beneficiary has declared a default in the terms of said Deed of Trust by failing to make the monthly payments due in the amount of \$1,274.96, beginning January 1, 2010, and each month subsequent, which monthly in-

NOTICE OF TRUSTEE'S SALE

TO BE SOLD FOR CASH AT TRUSTEE'S SALE on March 25, 2013, at 11:00 o'clock A.M. at the Main Entrance of the First American Title Company of Montana located at 122 South First Street in Ennis, MT 59729, the following described real property situated in MADISON COUNTY, Montana: A TRACT OF LAND SITUATED WITHIN THE NE 1/4 OF SECTION 5, TOWNSHIP 6 SOUTH, RANGE 1 WEST, P.M.M., MORE PARTICULARLY DESCRIBED ON CERTIFICATE OF SURVEY FILED IN BOOK 7 OF SURVEYS, PAGE 231, RECORDS OF MADISON COUNTY, MONTANA LESS AND EXCEPT THAT PARCEL DESCRIBED ON CERTIFICATE OF SURVEY FILED IN BOOK 7 OF SURVEYS, PAGE 245, RECORDS OF MADISON COUNTY, MONTANA Robert Floyd Opie, as Grantor(s), conveyed said real property to American Land Title Company, as Trustee, to secure an obligation owed to Mortgage Electronic Registration Systems, Inc., as Beneficiary, by Deed of Trust dated February 1, 2008 and recorded February 6, 2008 under Document No. 124416. The beneficial interest is currently held by CitiMortgage, Inc., First American Title Company, LLC, is the Successor Trustee pursuant to a Substitution of Trustee recorded in the office of the Clerk and Recorder of MADISON County, Montana. The beneficiary has declared a default in the terms of said Deed of Trust by failing to make the monthly payments due in the amount of \$1,274.96, beginning January 1, 2010, and each month subsequent, which monthly in-

NOTICE OF TRUSTEE'S SALE

TO BE SOLD FOR CASH AT TRUSTEE'S SALE on March 25, 2013, at 11:00 o'clock A.M. at the Main Entrance of the First American Title Company of Montana located at 122 South First Street in Ennis, MT 59729, the following described real property situated in MADISON COUNTY, Montana: A TRACT OF LAND SITUATED WITHIN THE NE 1/4 OF SECTION 5, TOWNSHIP 6 SOUTH, RANGE 1 WEST, P.M.M., MORE PARTICULARLY DESCRIBED ON CERTIFICATE OF SURVEY FILED IN BOOK 7 OF SURVEYS, PAGE 231, RECORDS OF MADISON COUNTY, MONTANA LESS AND EXCEPT THAT PARCEL DESCRIBED ON CERTIFICATE OF SURVEY FILED IN BOOK 7 OF SURVEYS, PAGE 245, RECORDS OF MADISON COUNTY, MONTANA Robert Floyd Opie, as Grantor(s), conveyed said real property to American Land Title Company, as Trustee, to secure an obligation owed to Mortgage Electronic Registration Systems, Inc., as Beneficiary, by Deed of Trust dated February 1, 2008 and recorded February 6, 2008 under Document No. 124416. The beneficial interest is currently held by CitiMortgage, Inc., First American Title Company, LLC, is the Successor Trustee pursuant to a Substitution of Trustee recorded in the office of the Clerk and Recorder of MADISON County, Montana. The beneficiary has declared a default in the terms of said Deed of Trust by failing to make the monthly payments due in the amount of \$1,274.96, beginning January 1, 2010, and each month subsequent, which monthly in-

NOTICE OF TRUSTEE'S SALE

TO BE SOLD FOR CASH AT TRUSTEE'S SALE on March 25, 2013, at 11:00 o'clock A.M. at the Main Entrance of the First American Title Company of Montana located at 122 South First Street in Ennis, MT 59729, the following described real property situated in MADISON COUNTY, Montana: A TRACT OF LAND SITUATED WITHIN THE NE 1/4 OF SECTION 5, TOWNSHIP 6 SOUTH, RANGE 1 WEST, P.M.M., MORE PARTICULARLY DESCRIBED ON CERTIFICATE OF SURVEY FILED IN BOOK 7 OF SURVEYS, PAGE 231, RECORDS OF MADISON COUNTY, MONTANA LESS AND EXCEPT THAT PARCEL DESCRIBED ON CERTIFICATE OF SURVEY FILED IN BOOK 7 OF SURVEYS, PAGE 245, RECORDS OF MADISON COUNTY, MONTANA Robert Floyd Opie, as Grantor(s), conveyed said real property to American Land Title Company, as Trustee, to secure an obligation owed to Mortgage Electronic Registration Systems, Inc., as Beneficiary, by Deed of Trust dated February 1, 2008 and recorded February 6, 2008 under Document No. 124416. The beneficial interest is currently held by CitiMortgage, Inc., First American Title Company, LLC, is the Successor Trustee pursuant to a Substitution of Trustee recorded in the office of the Clerk and Recorder of MADISON County, Montana. The beneficiary has declared a default in the terms of said Deed of Trust by failing to make the monthly payments due in the amount of \$1,274.96, beginning January 1, 2010, and each month subsequent, which monthly in-

NOTICE OF TRUSTEE'S SALE

TO BE SOLD FOR CASH AT TRUSTEE'S SALE

Madison County MARKETPLACE

View classifieds online at www.madisoniannews.com/classifieds.

FOR SALE

FINNIGAN'S FIREWOOD: Honest Cord, \$150 delivered. Any size or amount, Ennis/VC/ Ruby Valley. 599-5270. Senior/Veteran/Volume Disc. 4-12c

HORSE SALE: Consignment forms due for Wild West Winterfest Deadline is Feb. 8, sale is Feb. 16. Call Headwaters Livestock at 285-0502 or Mary Olson at 580-5743 for more information. 12-4c

SAWMILLS from only \$3997.00-Make & Save Money with your own bandmill. Cut lumber any dimension. In stock ready to ship. FREE info/DVD: www.NorwoodSawmills.com 1-800-578-1363, Ext.300N. #030

STEEL BUILDINGS. Huge winter discounts for spring delivery. 50x80, 62x100, 68x120, 68x200, 100x200. Take advantage of tax deductions. Limited Offer. Call Jim 1-888-782-7040. #032

FOR SALE: Yard Man snow blower, 5 HP, 21" cut, electric start, \$225. 682-4378. 13-2p

FOR SALE: 1999 Hyde 16.8 driftboat and trailer, rarely used, excellent condition, lots of extras, \$3,900 OBO. 406-660-0262. 13-2c

MOBILE HOME FOR SALE: 1999 Oakwood, 3 bdrm, 2 bath, 1200 sq. ft. New roof, flooring. Ennis. \$40,000. Call 803-645-1601. 13-3c

FOR RENT

FOR RENT: Call Apex Management at 682-7112 or 581-0103 for long term or vacation rentals in Ennis and the Madison Valley. 1-tfc

ENNIS MINI STORAGE New low prices with 10 x 10's starting at \$35. Larger sizes available. Call Reed Real Estate at 682-4236. 15-tfc

FOR RENT: Downtown retail space located in the Lone Elk Mall, 1,250 sq. ft. price negotiable call 640-1351. 28-tfc

Professional Office Space available in downtown Ennis, close to banks, restaurants. Common area facilities included. Various sizes starting at \$190 per month. Call 682-5653. 15-tfc

PETERSON'S DISCOUNT STORAGE - 10' x 19' units available for rent in-town Ennis. 682-7385. 48-tfc

Commercial Property For Rent Large commercial building on Main Street in Ennis. A high traffic location for your business. Call Sara, Prudential Montana, at 682-5002 for more information. 22-tfc

MADISON MANAGEMENT Vacation and Long Term Rentals 406-682-7034 www.madisonmanagement.com 22-tfc

BARKER VILLAGE APARTMENTS: 1 bedroom furnished apartments available in Ennis. A/C, washer/dryer equipped, private location. 4 month lease, \$650 per month plus security deposit, utilities included, non-smoking, no dogs. Call Erich Vogeli, Manager at 406-682-5737. 15-tfc

FOR RENT in Ennis 20 x 30 heated shops/storage. RV Storage also available. 581-7687. 46-tfc

FOR RENT: Commercial/Retail space available on Main St. in Ennis. Great exposure and location - 930 Sq. Ft. Call Paul if interested at 406-581-7878. 39-tfc

LONE ELK MALL Retail/Service/Commercial space for rent. 2,000 +/- sq/ft. Previously occupied by kitchen & bath boutique. Call for terms. 406-682-5653. 15-tfc

ROOMMATE WANTED: Lovely log home on 20 acres near Palisades fishing access. Private bed/bath. Shared kitchen/living area. All utilities and internet pd. Pets ok. Owner gone Nov-March. \$800/month. 406-570-5401. 48-tfc

BARKER VILLAGE APARTMENTS: 1 bedroom unfurnished apartments available in Ennis. A/C, washer/dryer equipped, private location. 1 year lease, \$600 per month plus security deposit, utilities included, non-smoking, no dogs. Call Erich Vogeli, Manager at 406-682-5737. 15-tfc

FOR RENT IN ENNIS: Office Space - 390 sq. ft. includes office, storage area & bathroom. Please contact Cindy at 682-3011 or 581-5372. 14-tfc

FOR RENT: Large mobile home site 1 mile from Ennis. 100 x 150', water & sewer, country atmosphere, quiet. **NO DOGS.** 682-4854. 29-tfc

FOR RENT: Quaint 2 bedroom, 1 bath country home in McAllister. NS/NP, \$650/mo. Call 682-3850. 4-tfc

FOR RENT: New 2 bedroom, 1 bath Duplex for rent in Ennis near school. Wood floors, tile bathroom, washer and dryer, energy efficient. Tenant responsible for all utilities except sewer and water which are included. No smoking or pets. Available Feb. 1. \$600 a month. Call Paul 581-7878 or Gary 581-3531. 11-tfc

FOR RENT: McAllister: Clean, small, 2 bedroom house, N/S, no pets, \$600 per month. 715-478-2085. 11-3c

FOR RENT: In Sheridan, walking distance to downtown, 2 bedroom, 2 bath, all major appliances, water & sewer included, \$475 per month. Call 670-6911. 11-tfc

ENNIS RENTAL: Clean, furnished studio apt, \$395 includes utilities. No smoking, no pets. 682-7268. 11-3c

FOR RENT: 2 bedroom apartment for rent. Major appliances included, no pets. 682-7152. 12-tfc

FOR RENT: 3 bedroom, 2 bath home in Alder. High ceilings in living room, large utility room, next to store and post office, \$650 plus utilities, no smoking, pets negotiable, available Feb. 1. Call 842-5839. 12-2c

FOR RENT: Near Ennis Airport, 2 bedroom, 1 bath house, electric with wood heat, W/D, pets negotiable, on 5 acres w/fenced pasture, allow 2 horses, \$750 per month, 1st, last plus deposit, Call 600-7826 or 570-0494. 13-tfc



VACATION RENTAL: Close to Ennis. Rent by the night, week or month. Sleeps 12+ people. Call for rates and more information at 406-287-7861 or 406-498-6113. 48-e/o tfc

HELP WANTED

HELP WANTED: The Madison Valley Manor is accepting applications for a part time fill in position in the Dietary Department. Must be available to work all shifts and positions. Commercial cooking experience is helpful but not necessary. Please contact Candy at mvdietary@3rivers.net or call 406-682-7271. 14-e/o

HELP WANTED: Journeyman electrician needed in Baker, Montana. Will be installing, maintaining and repairing electrical wiring in the oilfield, residential and commercial. Normal work week Monday - Friday. Must be able to obtain a CDL which includes drug and alcohol testing, DOT physical, driving records, and DOT background check for safety sensitive positions for the previous two years (three years for CDL drivers). FT position is open immediately. Benefits and wages DOE. Must have a valid driver's license and good driving record. Must be able to lift 50 to 75 pounds. Email your resume to trisho45@hotmail.com. 406-778-3274 days, 406-778-2255 eve, 406-778-3794 fax. Benefits include health insurance, Aflac, paid vacation, holidays and retirement. Barth Electric, Inc., 3612 North Highway 7, Baker, MT 59313-1514. #028

Bozeman Daily Chronicle ADVERTISING SALES (Established Territory). Quality print, online, email, direct mail, and specialized options give ability to customize plans to help advertisers reach their goals. Qualifications: Applicant needs sales experience (preferably media), strong customer service skills, presentation abilities, attention to detail and a strong commitment to setting and hitting goals. The Chronicle provides EXCELLENT benefits, paid mileage, a phone allowance, three month salary guarantee with competitive commission structure thereafter. Send a cover letter and resume to: Sylvia Drain, sdrain@dailychronicle.com E.O.E. #029

REGISTERED SANITARIAN/LAND USE PLANNER (Sidney, Montana). Review applications/administer regulations for subdivisions, trailer courts/RV parks, floodplain, water, wastewater systems. Degree required. Contact Stephanie Ler 406-433-2207. #025 Please run in Sunday Editions if possible. Thank you.

NOTICE OF BOARD VACANCIES: The Madison County Board of Commissioners has vacancies on the **Big Hole River Advisory Board**, the **Big Sky Mountains, Trails, Recreation, and Parks District Board** (two positions), the **Public Health Board** for a school representative, the **Tax Appeal Board** representing the Twin Bridges/Commission District 2 Area, the **Alder Rural Fire District Board** and the **Ruby Valley Parks and Recreation District Board**. If you are interested in serving on any of these boards please contact the Commissioners' Office at 406-843-4277, by email at madco@madison.mt.gov, or visit our website at www.madison.mt.gov. 13-2c

HELP WANTED: Evening and weekend childcare and light housekeeping in my home in Ennis. Must be consistently available and have clean driving record. Work and Character References required. Call (cell) 360-0109 for resume mailing instructions. 14-2c

REAL ESTATE

DUPLEX FOR SALE: Troutdale 1 on Golden Trout Lane - Will sell separately - on pond. Call 406-682-4105 ask for Marilyn. 35-tfc

NEWLY REMODELED HOME at Rainbow Point with private access to Ennis Lake. Info @ www.ennislakefront.com or 406-580-5514. 22-tfc

HOME FOR SALE: 3 bedroom, 2 bath, new everything, extra large master, landscaped Sheridan home, \$139,000. Call 916-600-3018 or 406-842-7737. 5-tfc

LOG HOME FOR SALE: 1,400 sq. ft., 3 bedroom, 1 bath, full basement, lower Ennis, 2 lots, metal roof, mature trees, \$151K, call 406-595-4224. 11-3c

COMMERCIAL BUILDING FOR SALE OR LEASE: Walk-in cooler, off street parking, handicapped accessible, Main Street Harrison. 406-539-5553. 13-2c

WANTED

WANTED: JUNK CARS / FARM EQUIPMENT - Free removal. Call 684-5551. 11-tfc

PAYING CASH for running or not cars, trucks, buses, tractors & more. Also accepting donated vehicles. FREE towing, also FREE removal of all metal products. 406-548-1622. 12-4c

SERVICES

MAIN STREET PROFESSIONAL SERVICES
Let us relieve some of the stress from your life!
All phases of bookkeeping
Accounts Payable/Receivable
Payroll
Account Reconciliation
And Much More!
Call 842-5822 for an appointment.
401 S. Main Street, Sheridan. 46-tfc

DEEMO'S MEATS
Don't stress your livestock by taking them to slaughter. Let slaughter come to your ranch.
Deemo's Meats in Ennis will resume mobile slaughter on Dec. 3
To schedule an appointment, call 682-7306 and ask for Scott.
4-12c

Expert Tree Care
406-683-5592
406-865-0000
60' Lift Truck
Flag Pole Maintenance

Chimney & Vent CLEANING
Gary Kinney
843-5486

AUCTION

ESTATES AUCTION
SUNDAY; FEB 3RD
@ Whitehall Com Ctr
11am-doors open 9:30

SEATING & FREE COFFEE!

LOTS OF HIGH QUALITY ITEMS
ANTIQUES, COLLECTIBLES, FURNISHINGS, WESTERN/ COWBOY, SPURS, GLASSWARE, RAILROAD, MILITARY ITEMS, VINTAGE TOYS, OUTDOOR, HUNTING, FISHING, WILDLIFE MOUNTS, ANTLERS, REMINGTON NASCAR GO KART, RUGAR M77 BA 300 HAWKEYE WINMAG RIFLE W/ SCOPE, & WAY TOO MUCH MORE TO LIST HERE! COME EARLY, BRING TRAILER!

—VISIT OUR WEBSITE—
HAGEDORNAUCTION.COM

HAGEDORN AUCTION
(406)684-5181

USE PHOTOS in your classified!
1x1 photo with ad copy \$13.50
Add a border: \$15.00
Call 406.682.7755 or stop by!

Place Your Classified
682-7755

ADVERTISE LOCALLY

Call the **Madisonian NOW** to talk options!

682-7755

- New, clean and well-kept
- A nice variety of sizes
- Yearly prices available
- Lowest rates in the valley

581-7878 or 682-7878

MADISON VALLEY STORAGE

SHOP SPACE FOR RENT IN ENNIS
All sizes available up to 1,200 square feet
Heated, insulated, large doors, half bath.
Gary at 581-3531 or Paul at 581-7878

The Bargain Box
Bargain box ads are FREE! Items must be valued \$50 or less
Call 682-7755

Old antique telephones - five desk models and two wall models, \$20 a piece. 287-7827.
Coca Cola Pendant Lamp 24" - Retail \$495. Asking \$50. Ruby red glass, brilliant white script logo lettering, green trim on the Tiffany inspired pendant lamp \$599-5485
Pottery Barn - 2 Antique Beaded Wall Sconces with oil rubbed bronze finish, bell frosted glass shade. 60-watt, 7 x 8.5 x 7.5" h, never used, still in original packaging. Retail \$99.....Asking \$50 for the pair. Call 406-599-5485

Microwave, white, \$30; new curtains, \$5/pair; lamp, \$15. 682-4378
Black swivel rocking chair, \$25; matching ottoman, \$10; dresser w/3 drawers, \$15. 682-4378
FOR SALE: Antique Speed Queen wringer washer, excellent condition, even works, \$45; antique secretary desk, \$45; Portable Kenmore sewing machine, \$45. Call 406-579-8411. 8-1f
Stainless Cuisinart Toaster Oven, \$30. 682-4428

ENNIS ALANON
Monday ~ 10:45 a.m.
Basement of Madison Valley Presbyterian Church, Ennis
Hugel & Charles
CALL 682-5097 or 682-7023

"Keep it Simple."
A.A. MEETING
Bethany Hall, Sheridan
(behind Methodist Church)
Wednesdays ~ 8 p.m.

ALANON
Twin Bridges • Church of the Valley
Thursdays 8 pm

ACA Meeting
12-step program for Adult Children of Alcoholics
Bethany Hall-Sheridan | Weds 7 pm

ALCOHOLICS ANONYMOUS
Meeting Every Thurs. at 8 p.m., Church of the Valley, Twin Bridges
ALANON MEETING
Same Time - Same Place

Email The Madisonian @ editor_ads_or_news@madisoniannews.com

Vennis Over The Hill Unity Group
Faced with a drinking problem? Perhaps Alcoholics Anonymous Can Help. SUazN. - 10 a.m., No Smoking, Virginia City Library
MON. - Open, 7 p.m., Basement of M.V. Presbyterian Church, No Smoking
WED. - Closed, 7:30 p.m., Trinity Church
FRI. - Open, 8 p.m., Basement of M.V. Presbyterian Church, No Smoking
682-3490, 682-7023 Ennis
843-5352 Virginia City

Cryptogrip Answer: WHEN SOMETHING ISN'T MADE WIDE ENOUGH, I GUESS IT WILL BE SUFFERING FROM SHORTNESS OF BREATH.

A	H	E	M	T	I	L	T	S	E	C
M	E	T	A	A	F	A	R	C	R	Y
B	A	C	K	S	P	A	C	E	A	G
O	T	H	E	R	S	A	P	R	O	N
				R	I	M	O	T	I	F
W	A	D	S	D	I	P	G	A	V	E
E	R	R	A	R	T	S	C	I	A	
B	E	A	U	I	T	S	P	E	A	R
				G	N	A	S	H	H	I
S	T	R	A	W	D	O	L	L	A	R
I	R	A	F	I	R	E	P	L	A	C
D	O	C	U	R	N	S	A	N	N	A
E	Y	E	L	E	A	K	R	E	E	D



Eye Examinations with Dr. Sarah

406.682.4208

222 E. MAIN, IC ENNIS, MT 59729

OUTPOSTEVENTS.NET

C4 Thursday, January 31, 2013

sing and play for your enjoyment! Honors Choir will sing under the direction of Micah Hunter. Honors Band will perform under the baton of Dr. Timothy Dueppen.

Documentary Film, Ennis

Madison Valley Public Library hosts a showing of ETHOS: A Time of Change at 6pm. This is a documentary film explaining who influences our government. Free admission. (*also showing at Sheridan Public Library on Feb. 5 at 5:50 p.m.)

T U E S D A Y FEBRUARY 5

Senior meals, Virginia City

Senior meals now being served in Virginia City for citizens 60 and over every

Tuesday and Thursday at the Creamery for a nominal fee of \$3. Lunches served between 11:30 a.m. and noon.

Senior meals, Twin Bridges

The TBS & CC provides Meals for Seniors every Tuesday and Friday at 11:30 a.m. at the Wagon Wheel Restaurant for seniors 60 years and up. (Spouse and caregivers are invited). Sign-in is requested and donation can be provided.

Books and Babies, Virginia City

Books and Babies at the County Library at 217 Idaho St. every Tuesday morning at 10:30 a.m. Mothers or caregivers bring your little ones, birth to 3 years, for playtime, stories and singing.

Fly tying workshop, Ennis

Come join us every Tuesday night at 6:30 p.m. (except holidays) at the Ennis Cafe second floor. Everyone is welcome. For more information call Ron 600-6081.

Annual Chamber Membership Meeting, Sheridan

The Greater Ruby Valley Chamber of Commerce's annual membership meeting will be held from 5-8pm Please join us at the Episcopal Parish Hall (behind Christ Episcopal Church) for information on how you can be a member of the Greater Ruby Valley Chamber!

Editor's note: The Madisionian is happy to put your event in the community calendar. Any community event is welcome. Please email community calendar events to events@madisoniannews.com

John is in Ennis Every Thursday!

He has joined

RICH'S FLOORING

310 Gallatin Farmers Ave., Belgrade
406-388-7955 or cell 406-209-1168

**CARPET ~ TILE
LINOLEUM ~ HARDWOOD**

"For quality you can stand on."

SOUTHMONT FORM & FINISH

FULL SERVICE CONCRETE CONTRACTOR

- Pump Truck Service • Ground Heater Rental
- Footings, Walls, Slabs • 60' Boom Truck Rental
- Commercial & Residential Concrete
- Sprayed Foundation Coating & Waterproofing
- Decorative/Custom Concrete/Stamped & Overlay

FREE ESTIMATES - Licensed & Insured

Serving All of Southwestern Montana

Mick & Suzanne Hubner - Bob Hubner
Mob.: 406-925-1864 ~ Phone: 406-682-7253 ~ Fax: 406-682-5425
e-mail: hubner@3rivers.net - Ennis, Montana

KEEP-YOU-IN-STITCHES

JAN WOOD

Clothing Alterations
Custom Sewing

682-7824 ~ 600-2518

NORRIS HOT SPRINGS 50-MILE GRILL

ISLAND OF NORRIS CAMPGROUND now open!

New Pool Hours

Saturday & Sunday 12 Noon to 10 pm
Wednesday - Friday 4 pm to 10 pm

50-MILE GRILL
local-organic-sustainable-fresh
norrishotsprings.com
406.685.3303

Get Results.

s.hill@madisoniannews.com

If you're looking for the right answers to your auto and home insurance needs

Look to MetLife Auto & Home®. Finding the right insurance can be a challenge, but your local insurance agent has the solution.

To find your insurance answers, call today:

Ty Moline
Agency Insurance Division
Big Sky, Ennis and the rest of Montana
Big Sky 993 9242 / Ennis 682 4202

MetLife
Guarantees for the if in life

BusinessBriefs

Sara Racine
THE MADISONIAN
sara@madisoniannews.com

Trenz Salon & Day Spa

Tayna and the ladies are happy to announce they have moved into their new space. Trenz Salon & Day Spa is now located at 50 MT Hwy 287 (right next to The Alley Bistro). They will soon offer extended services in addition to the quality services you have come to expect. Stop by and check out the place, and say hello to the crew. Or schedule your next appointment by calling 682-3400.

Super Bowl Sunday

The football fans have been looking forward to this Sunday as they do every year. It's Super Bowl time. Not sure where to go? Your favorite watering holes are hosting game day in a major way. With drink specials, tailgating apps and game boards you are bound to have a good time. Look for ads in this week's paper about who is doing what and make your plans for game day. Are you ready for some football?

Beaverhead Therapy and Massage

Beaverhead Therapy and Massage, located at 215 E. Helena, invites you to their grand opening on Feb. 2 at 1 p.m. Join them for a ribbon-cutting ceremony and light refreshments. Sign up for a door prize—you must be present to win—and meet Elizabeth, Dillon's newest massage therapist.

Beaverhead Therapy and Massage is dedicated to the memory of Elizabeth's father, Norman Ashcraft. Norman struggled during an extended illness. Massage was

The main reason you came to Virginia City is still open.

New... Lunch Menu

Hot Sandwiches
Daily Soups
Espresso
Cinnamon Rolls
World's best ice cream.

I KNOW...RIGHT?
OPEN MONDAY - FRIDAY
9AM TO 4PM
843-5515

Virginia City Creamery

ENNIS CONTINUING EDUCATION

Missed Registration?

Still a chance to sign up for

Beginning Fly Tying
Class begins 1.24.13

Nancy Ruby
Core Connections Yoga Workshop
1.26.13

Madison Valley Guest Chef:
Class begins 1.21.13

Call for Details

682-4258
ENNIS-ECE.ORG

Three Great Services Under One Roof!

MDM CONSTRUCTION **GOT GUTTERS** **HIGH R INSULATION**

Residential & Commercial Seamless Rain Gutters

Locally Owned & Operated
Free Estimates - Licensed & Insured

Call Mike McKittrick Today!
406-682-4529

100 Prairie Way #2 - Ennis, Mt 59729

HOME PARK

Assisted Living

Brand new home • Safe and cozy
Comfortable, loving environment
Private rooms

596-3800 • 504 Ray Lane • Sheridan, Montana
homeparkassistedliving.com

FOR ALL OF YOUR EXCAVATION NEEDS

with attention to detail & quality at a fair price.

JDL CONSTRUCTION CO.

SHERIDAN, MT • 406-842-5112
WWW.JDLCONSTRUCTION.COM

Screened Top Soil
Landscape Rock
Crushed Gravel

Serving Southwest Montana Since 1978

HARDY DRYWALL

FULL SERVICE DRYWALL, PLASTER & STUCCO

406-596-3137

South West Septic

Locally Owned & Operated

For All Your Septic & Portable Toilet Needs

We want your stinkin' business!
Get your butt on the schedule.

Spiffy Biffy

WWW.SWSMT.COM • swsmt@hotmail.com
Ennis 682-7854 • Sheridan 842-7854 • Cell 596-7854

D&D Auto, Inc.

AUTO & TRUCK SALES

We Are YOUR Go to Guys!

Auto & Truck Repair - Gas or Diesel - All Makes & Models

We Make Hydraulic Hoses
New Tires, Wheels & Tire Repairs
Engines & Transmissions Installed - Car & Truck Accessories
We Install Windshields - Alignments

ENNIS • 682-4537

Daily Parts Deliveries to Alder, Sheridan & Twin Bridges Areas
24 Hour Towing (pager 406-522-1056)